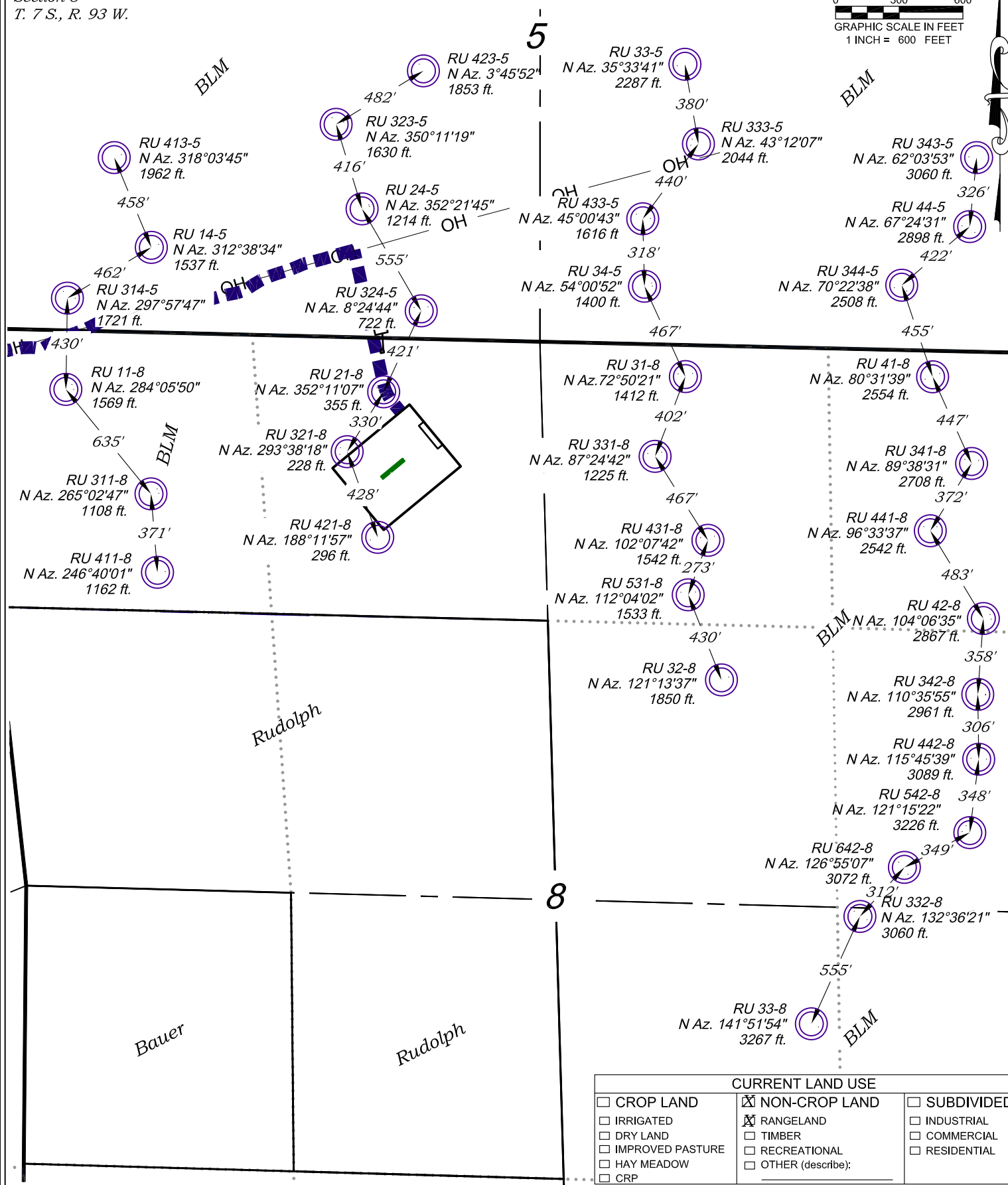


Section 8
T. 7 S., R. 93 W.

0 300 600
GRAPHIC SCALE IN FEET
1 INCH = 600 FEET



CURRENT LAND USE		
<input type="checkbox"/> CROP LAND	<input checked="" type="checkbox"/> NON-CROP LAND	<input type="checkbox"/> SUBDIVIDED
<input type="checkbox"/> IRRIGATED	<input checked="" type="checkbox"/> RANGELAND	<input type="checkbox"/> INDUSTRIAL
<input type="checkbox"/> DRY LAND	<input type="checkbox"/> TIMBER	<input type="checkbox"/> COMMERCIAL
<input type="checkbox"/> IMPROVED PASTURE	<input type="checkbox"/> RECREATIONAL	<input type="checkbox"/> RESIDENTIAL
<input type="checkbox"/> HAY MEADOW	<input type="checkbox"/> OTHER (describe):	
<input type="checkbox"/> CRP		

Construction Plan Prepared for:
WPXENERGY WPX Energy Rocky Mountain, LLC
RU 21-8 Drill Pad - Plat 6-B
LOCATION SUPPLEMENT

136 East Third Street
Rifle, Colorado 81650
Ph. (970) 625-2720
Fax (970) 625-2773



BOOKCLIFF
Survey Services, Inc.

SCALE: 1" = 600'
DATE: 10/15/14
PLAT: 6B of 7
PROJECT: Valley
DFT: cws

Visible Improvements to Well Head (ft.)

<i>Description</i>	<i>Building</i>	<i>Building Unit</i>	<i>High Occu. Building</i>	<i>DOAA</i>	<i>Public Road</i>	<i>Above Ground Utility</i>	<i>Railroad</i>	<i>Property Line</i>
RU 33-8	90° 5205	90° 5205	>5280	>5280	100° 4879	344° 1064	>5280	181° 651
RU 542-8	90° 5199	90° 5199	>5280	>5280	100° 4874	344° 1061	>5280	181° 656
RU 32-8	91° 5193	91° 5193	>5280	>5280	100° 4869	344° 1058	>5280	181° 661
RU 421-8	91° 5188	91° 5188	>5280	>5280	100° 4864	344° 1055	>5280	181° 666
RU 442-8	91° 5182	91° 5182	>5280	>5280	100° 4859	344° 1052	>5280	181° 671
RU 342-8	91° 5176	91° 5176	>5280	>5280	100° 4854	344° 1049	>5280	181° 676
RU 321-8	91° 5165	91° 5165	>5280	>5280	100° 4845	344° 1043	>5280	181° 686
RU 42-8	91° 5159	91° 5159	>5280	>5280	100° 4840	344° 1040	>5280	181° 691
RU 441-8	91° 5153	91° 5153	>5280	>5280	100° 4835	344° 1037	>5280	181° 696
RU 331-8	91° 5148	91° 5148	>5280	>5280	100° 4830	344° 1034	>5280	181° 701
RU 341-8	91° 5142	91° 5142	>5280	>5280	100° 4825	344° 1031	>5280	181° 706
RU 41-8	91° 5136	91° 5136	>5280	>5280	101° 4821	344° 1028	>5280	181° 711
RU 31-8	91° 5131	91° 5131	>5280	>5280	101° 4816	344° 1025	>5280	181° 715
RU 344-5	91° 5125	91° 5125	>5280	>5280	101° 4811	344° 1022	>5280	181° 720
RU 44-5	91° 5119	91° 5119	>5280	>5280	101° 4806	344° 1018	>5280	181° 725
RU 343-5	91° 5114	91° 5114	>5280	>5280	101° 4802	344° 1015	>5280	181° 730
RU 34-5	91° 5108	91° 5108	>5280	>5280	101° 4797	344° 1012	>5280	181° 735
RU 332-8	91° 5211	91° 5211	>5280	>5280	100° 4886	344° 1055	>5280	181° 659
RU 642-8	91° 5206	91° 5206	>5280	>5280	100° 4882	344° 1052	>5280	181° 664
RU 411-8	91° 5200	91° 5200	>5280	>5280	100° 4877	344° 1049	>5280	181° 669
RU 311-8	91° 5194	91° 5194	>5280	>5280	100° 4872	344° 1046	>5280	181° 674
RU 531-8	91° 5188	91° 5188	>5280	>5280	100° 4867	344° 1043	>5280	181° 679
RU 431-8	91° 5183	91° 5183	>5280	>5280	100° 4862	344° 1040	>5280	181° 684
RU 11-8	91° 5177	91° 5177	>5280	>5280	100° 4857	344° 1037	>5280	181° 689
RU 314-5	91° 5171	91° 5171	>5280	>5280	100° 4852	344° 1033	>5280	181° 693
RU 14-5	91° 5166	91° 5166	>5280	>5280	100° 4848	344° 1030	>5280	181° 698
RU 413-5	91° 5160	91° 5160	>5280	>5280	100° 4843	344° 1027	>5280	181° 703
RU 21-8	91° 5154	91° 5154	>5280	>5280	101° 4838	344° 1024	>5280	181° 708
RU 323-5	91° 5149	91° 5149	>5280	>5280	101° 4833	344° 1021	>5280	181° 713
RU 24-5	91° 5143	91° 5143	>5280	>5280	101° 4828	344° 1018	>5280	181° 718
RU 423-5	91° 5137	91° 5137	>5280	>5280	101° 4824	344° 1015	>5280	181° 723
RU 324-5	91° 5132	91° 5132	>5280	>5280	101° 4819	344° 1012	>5280	181° 728
RU 433-5	91° 5126	91° 5126	>5280	>5280	101° 4814	344° 1009	>5280	181° 733
RU 333-5	91° 5120	91° 5120	>5280	>5280	101° 4809	344° 1006	>5280	181° 738
RU 33-5	91° 5115	91° 5115	>5280	>5280	101° 4804	344° 1003	>5280	181° 743

Production Equipment

Seperators	92° 4928	92° 4928	>5280	>5280	102° 4633	344° 860	>5280	181° 797
Tanks	98° 5233	98° 5233	>5280	>5280	107° 5019	344° 285	>5280	181° 1325

136 East Third Street
Rifle, Colorado 81650
Ph. (970) 625-2720
Fax (970) 625-2773



SCALE: NA
DATE: 10/15/14
PLAT: 6C of 7
PROJECT: Valley
DFT: cws

Construction Plan Prepared for:
WPXENERGY WPX Energy Rocky Mountain, LLC

RU 21-8 Drill Pad - Plat 6-C
LOCATION TABLE