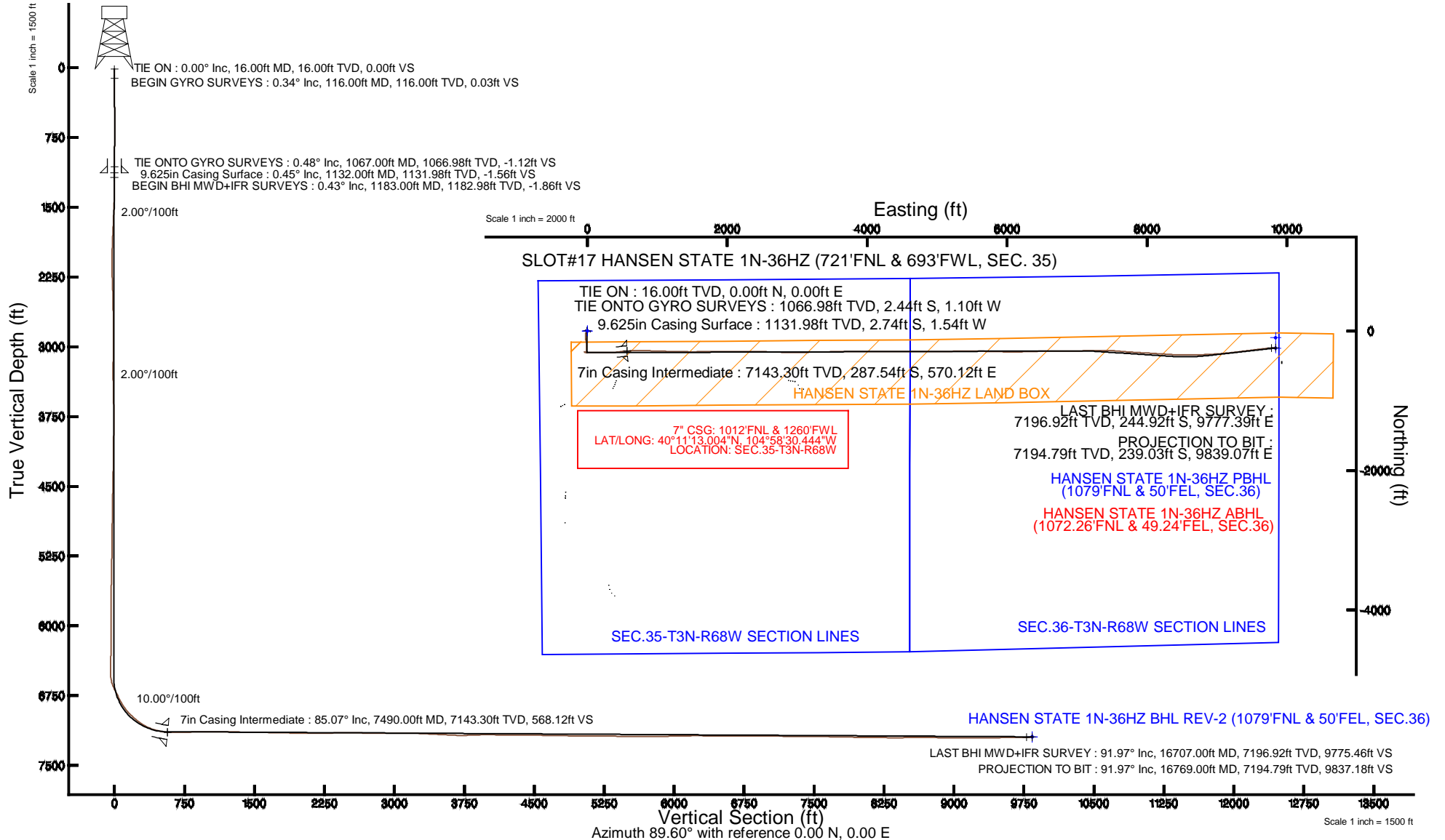


# KERR-MCGEE OIL & GAS ONSHORE LP

Location: COLORADO Slot: SLOT#17 HANSEN STATE 1N-36HZ (721'FNL & 693'FWL, SEC. 35)  
 Field: WELD COUNTY (KERR MCGEE) Well: HANSEN STATE 1N-36HZ  
 Facility: SEC.35-T3N-R68W Wellbore: HANSEN STATE 1N-36HZ PWB

Plot reference wellpath is HANSEN STATE 1N-36HZ (REV-A.0) PWP

True vertical depths are referenced to XTREME 24 (16KB) (RKB)	Grid System: NAD83 / Lambert Colorado SP, Northern Zone (501), US feet
Measured depths are referenced to XTREME 24 (16KB) (RKB)	North Reference: True north
XTREME 24 (16KB) (RKB) to Mean Sea Level: 4952 feet	Scale: True distance
Mean Sea Level to Mud line (At Slot: SLOT#17 HANSEN STATE 1N-36HZ (721'FNL & 693'FWL, SEC. 35)): 0 feet	Depths are in feet
Coordinates are in feet referenced to Slot	Created by: robiale01 on 11/18/2014



REFERENCE WELLPATH IDENTIFICATION			
Operator	KERR-MCGEE OIL & GAS ONSHORE LP	Slot	SLOT#17 HANSEN STATE 1N-36HZ (721'FNL & 693'FWL, SEC. 35)
Area	COLORADO	Well	HANSEN STATE 1N-36HZ
Field	WELD COUNTY (KERR MCGEE)	Wellbore	HANSEN STATE 1N-36HZ AWB
Facility	SEC.35-T3N-R68W		

REPORT SETUP INFORMATION			
Projection System	NAD83 / Lambert Colorado SP, Northern Zone (501), US feet	Software System	WellArchitect® 4.0.0
North Reference	True	User	Robiale01
Scale	0.999957	Report Generated	11/18/2014 at 3:34:42 PM
Convergence at slot	n/a	Database/Source file	WellArchitectDB/HANSEN_STATE_1N-36HZ_AWB.xml

WELLPATH LOCATION						
	Local coordinates		Grid coordinates		Geographic coordinates	
	North[ft]	East[ft]	Easting[US ft]	Northing[US ft]	Latitude	Longitude
Slot Location	766.85	-392.24	3146070.35	1311665.16	40°11'15.846"N	104°58'37.790"W
Facility Reference Pt			3146467.10	1310900.67	40°11'08.268"N	104°58'32.736"W
Field Reference Pt			3197771.84	1268891.29	40°04'09.600"N	104°47'36.000"W

WELLPATH DATUM			
Calculation method	Minimum curvature	XTREME 24 (16'KB) (RKB) to Facility Vertical Datum	4952.00ft
Horizontal Reference Pt	Slot	XTREME 24 (16'KB) (RKB) to Mean Sea Level	4952.00ft
Vertical Reference Pt	XTREME 24 (16'KB) (RKB)	XTREME 24 (16'KB) (RKB) to Mud Line at Slot (SLOT#17 HANSEN STATE 1N-36HZ (721'FNL & 693'FWL, SEC. 35))	4952.00ft
MD Reference Pt	XTREME 24 (16'KB) (RKB)	Section Origin	N 0.00, E 0.00 ft
Field Vertical Reference	Mean Sea Level	Section Azimuth	91.39°

REFERENCE WELLPATH IDENTIFICATION			
Operator	KERR-MCGEE OIL & GAS ONSHORE LP	Slot	SLOT#17 HANSEN STATE 1N-36HZ (721'FNL & 693'FWL, SEC. 35)
Area	COLORADO	Well	HANSEN STATE 1N-36HZ
Field	WELD COUNTY (KERR MCGEE)	Wellbore	HANSEN STATE 1N-36HZ AWB
Facility	SEC.35-T3N-R68W		

WELLPATH DATA (167 stations) † = interpolated/extrapolated station										
MD [ft]	Inclination [°]	Azimuth [°]	TVD [ft]	Vert Sect [ft]	North [ft]	East [ft]	Latitude	Longitude	DLS [°/100ft]	Comments
0.00†	0.000	173.620	0.00	0.00	0.00	0.00	40°11'15.846"N	104°58'37.790"W	0.00	
16.00	0.000	173.620	16.00	0.00	0.00	0.00	40°11'15.846"N	104°58'37.790"W	0.00	TIE ON
116.00	0.340	173.620	116.00	0.04	-0.29	0.03	40°11'15.843"N	104°58'37.790"W	0.34	BEGIN GYRO SURVEYS
216.00	0.160	170.570	216.00	0.11	-0.73	0.09	40°11'15.839"N	104°58'37.789"W	0.18	
316.00	0.340	124.880	316.00	0.38	-1.03	0.36	40°11'15.836"N	104°58'37.785"W	0.26	
416.00	0.380	131.870	416.00	0.88	-1.43	0.85	40°11'15.832"N	104°58'37.779"W	0.06	
516.00	0.390	139.380	515.99	1.36	-1.91	1.31	40°11'15.827"N	104°58'37.773"W	0.05	
616.00	0.090	52.360	615.99	1.65	-2.12	1.60	40°11'15.825"N	104°58'37.769"W	0.40	
716.00	0.230	318.270	715.99	1.57	-1.92	1.53	40°11'15.827"N	104°58'37.770"W	0.25	
816.00	0.330	263.430	815.99	1.15	-1.80	1.11	40°11'15.828"N	104°58'37.776"W	0.27	
916.00	0.500	270.140	915.99	0.43	-1.83	0.38	40°11'15.828"N	104°58'37.785"W	0.18	
1016.00	0.760	240.400	1015.98	-0.58	-2.16	-0.63	40°11'15.825"N	104°58'37.798"W	0.41	
1067.00	0.480	238.120	1066.98	-1.04	-2.44	-1.10	40°11'15.822"N	104°58'37.804"W	0.55	TIE ONTO GYRO SURVEYS
1183.00	0.430	227.670	1182.98	-1.77	-2.99	-1.84	40°11'15.816"N	104°58'37.814"W	0.08	BEGIN BHI MWD+IFR SURVEYS
1402.00	0.540	253.730	1401.97	-3.34	-3.83	-3.44	40°11'15.808"N	104°58'37.834"W	0.11	
1496.00	2.530	230.310	1495.93	-5.33	-5.28	-5.46	40°11'15.794"N	104°58'37.860"W	2.18	
1590.00	3.840	218.890	1589.78	-8.81	-9.06	-9.03	40°11'15.757"N	104°58'37.906"W	1.54	
1685.00	5.420	210.320	1684.47	-12.92	-15.41	-13.29	40°11'15.694"N	104°58'37.961"W	1.81	
1779.00	6.400	204.070	1777.97	-17.08	-24.02	-17.67	40°11'15.609"N	104°58'38.018"W	1.25	
1873.00	8.200	197.690	1871.21	-20.99	-35.19	-21.85	40°11'15.498"N	104°58'38.071"W	2.10	
1967.00	10.180	180.770	1964.01	-22.78	-49.89	-24.00	40°11'15.353"N	104°58'38.099"W	3.54	
2059.00	10.190	185.050	2054.57	-23.21	-66.13	-24.82	40°11'15.193"N	104°58'38.110"W	0.82	
2151.00	11.250	178.820	2144.96	-23.32	-83.21	-25.35	40°11'15.024"N	104°58'38.117"W	1.71	
2241.00	12.240	172.560	2233.08	-21.47	-101.44	-23.94	40°11'14.844"N	104°58'38.098"W	1.79	
2333.00	11.720	169.770	2323.08	-18.09	-120.31	-21.01	40°11'14.657"N	104°58'38.061"W	0.85	
2425.00	11.250	168.470	2413.23	-14.20	-138.30	-17.56	40°11'14.479"N	104°58'38.016"W	0.58	
2517.00	12.260	175.120	2503.31	-11.12	-156.83	-14.94	40°11'14.296"N	104°58'37.982"W	1.84	
2608.00	12.180	173.760	2592.25	-8.79	-176.00	-13.07	40°11'14.107"N	104°58'37.958"W	0.33	
2701.00	11.710	172.730	2683.23	-6.07	-195.11	-10.81	40°11'13.918"N	104°58'37.929"W	0.55	
2792.00	12.140	177.710	2772.27	-4.06	-213.83	-9.26	40°11'13.733"N	104°58'37.909"W	1.23	
2884.00	11.650	176.980	2862.29	-2.73	-232.77	-8.38	40°11'13.546"N	104°58'37.898"W	0.56	
2976.00	10.370	182.650	2952.60	-2.19	-250.32	-8.28	40°11'13.372"N	104°58'37.897"W	1.82	
3067.00	8.820	184.970	3042.33	-2.81	-265.46	-9.26	40°11'13.223"N	104°58'37.909"W	1.76	
3159.00	7.260	193.930	3133.42	-4.51	-278.13	-11.27	40°11'13.098"N	104°58'37.935"W	2.17	
3250.00	5.770	183.040	3223.84	-5.89	-288.27	-12.90	40°11'12.997"N	104°58'37.956"W	2.12	
3342.00	4.540	172.840	3315.46	-5.48	-296.51	-12.69	40°11'12.916"N	104°58'37.953"W	1.66	
3434.00	3.470	150.140	3407.24	-3.50	-302.53	-10.85	40°11'12.856"N	104°58'37.930"W	2.06	
3526.00	1.850	134.930	3499.14	-0.98	-306.00	-8.41	40°11'12.822"N	104°58'37.898"W	1.91	
3619.00	0.400	45.710	3592.13	0.34	-306.83	-7.12	40°11'12.814"N	104°58'37.882"W	2.03	
3712.00	0.310	24.150	3685.12	0.66	-306.38	-6.78	40°11'12.818"N	104°58'37.877"W	0.17	
3898.00	0.170	342.310	3871.12	0.77	-305.65	-6.66	40°11'12.826"N	104°58'37.876"W	0.12	
4177.00	0.780	272.480	4150.11	-1.27	-305.18	-8.68	40°11'12.830"N	104°58'37.902"W	0.26	
4457.00	1.340	249.070	4430.07	-6.20	-306.26	-13.64	40°11'12.820"N	104°58'37.966"W	0.25	
4727.00	1.430	251.160	4699.99	-12.28	-308.48	-19.78	40°11'12.798"N	104°58'38.045"W	0.04	
4813.00	0.380	277.640	4785.97	-13.57	-308.79	-21.08	40°11'12.795"N	104°58'38.062"W	1.28	

REFERENCE WELLPATH IDENTIFICATION			
Operator	KERR-MCGEE OIL & GAS ONSHORE LP	Slot	SLOT#17 HANSEN STATE 1N-36HZ (721'FNL & 693'FWL, SEC. 35)
Area	COLORADO	Well	HANSEN STATE 1N-36HZ
Field	WELD COUNTY (KERR MCGEE)	Wellbore	HANSEN STATE 1N-36HZ AWP
Facility	SEC.35-T3N-R68W		

WELLPATH DATA (167 stations) † = interpolated/extrapolated station										
MD [ft]	Inclination [°]	Azimuth [°]	TVD [ft]	Vert Sect [ft]	North [ft]	East [ft]	Latitude	Longitude	DLS [°/100ft]	Comments
5068.00	0.690	271.380	5040.96	-15.95	-308.64	-23.45	40°11'12.796"N	104°58'38.092"W	0.12	
5323.00	1.100	289.590	5295.93	-19.81	-307.78	-27.29	40°11'12.805"N	104°58'38.142"W	0.19	
5578.00	1.090	297.030	5550.89	-24.32	-305.86	-31.76	40°11'12.824"N	104°58'38.199"W	0.06	
5833.00	0.280	194.860	5805.87	-26.65	-305.36	-34.08	40°11'12.828"N	104°58'38.229"W	0.46	
6089.00	0.260	268.200	6061.87	-27.38	-305.98	-34.82	40°11'12.822"N	104°58'38.239"W	0.13	
6344.00	0.650	273.730	6316.86	-29.40	-305.90	-36.84	40°11'12.823"N	104°58'38.265"W	0.15	
6429.00	0.700	278.790	6401.85	-30.40	-305.79	-37.84	40°11'12.824"N	104°58'38.278"W	0.09	
6514.00	1.090	285.310	6486.84	-31.70	-305.50	-39.13	40°11'12.827"N	104°58'38.294"W	0.47	
6599.00	7.360	88.230	6571.64	-27.04	-305.12	-34.46	40°11'12.831"N	104°58'38.234"W	9.89	
6684.00	24.850	91.440	6652.99	-3.56	-305.40	-10.98	40°11'12.828"N	104°58'37.931"W	20.60	
6769.00	27.180	89.600	6729.37	33.71	-305.72	26.29	40°11'12.825"N	104°58'37.451"W	2.90	
6855.00	27.220	91.470	6805.86	73.01	-306.08	65.60	40°11'12.821"N	104°58'36.945"W	0.99	
6940.00	34.790	92.870	6878.66	116.76	-307.80	109.31	40°11'12.804"N	104°58'36.382"W	8.95	
7026.00	44.980	92.620	6944.57	171.82	-310.42	164.33	40°11'12.778"N	104°58'35.673"W	11.85	
7112.00	50.590	89.070	7002.34	235.46	-311.27	227.97	40°11'12.770"N	104°58'34.853"W	7.20	
7197.00	55.270	91.350	7053.57	303.24	-311.56	295.76	40°11'12.767"N	104°58'33.979"W	5.91	
7282.00	66.890	85.490	7094.63	377.36	-309.30	369.96	40°11'12.789"N	104°58'33.023"W	14.93	
7367.00	75.530	81.880	7121.99	457.00	-300.40	449.84	40°11'12.877"N	104°58'31.994"W	10.93	
7438.00	80.460	84.010	7136.75	525.67	-291.88	518.74	40°11'12.962"N	104°58'31.106"W	7.54	
7490.00†	85.070	86.312	7143.30	576.94	-287.54	570.12	40°11'13.004"N	104°58'30.444"W	9.89	7" CASING POINT
7558.00	91.110	89.280	7145.57	644.73	-284.93	637.99	40°11'13.030"N	104°58'29.570"W	9.89	
7600.00	91.040	89.140	7144.78	686.69	-284.35	679.98	40°11'13.036"N	104°58'29.029"W	0.37	
7686.00	91.780	90.020	7142.66	772.62	-283.72	765.95	40°11'13.042"N	104°58'27.921"W	1.34	
7771.00	91.810	90.970	7140.00	857.56	-284.45	850.91	40°11'13.035"N	104°58'26.826"W	1.12	
7856.00	91.130	92.030	7137.82	942.53	-286.68	935.85	40°11'13.013"N	104°58'25.732"W	1.48	
7941.00	90.300	91.850	7136.76	1027.52	-289.56	1020.79	40°11'12.984"N	104°58'24.637"W	1.00	
8027.00	89.470	91.150	7136.93	1113.52	-291.81	1106.76	40°11'12.962"N	104°58'23.530"W	1.26	
8113.00	88.760	91.060	7138.26	1199.51	-293.47	1192.73	40°11'12.946"N	104°58'22.422"W	0.83	
8199.00	89.070	91.440	7139.89	1285.49	-295.34	1278.70	40°11'12.927"N	104°58'21.314"W	0.57	
8371.00	89.190	91.010	7142.50	1457.47	-299.02	1450.64	40°11'12.891"N	104°58'19.099"W	0.26	
8457.00	89.040	89.350	7143.83	1543.44	-299.29	1536.62	40°11'12.888"N	104°58'17.991"W	1.94	
8629.00	88.950	90.070	7146.85	1715.34	-298.42	1708.59	40°11'12.896"N	104°58'15.775"W	0.42	
8801.00	88.300	89.890	7150.97	1887.24	-298.36	1880.54	40°11'12.897"N	104°58'13.559"W	0.39	
8972.00	89.160	89.980	7154.76	2058.14	-298.16	2051.50	40°11'12.899"N	104°58'11.357"W	0.51	
9142.00	91.190	89.610	7154.24	2228.06	-297.56	2221.49	40°11'12.905"N	104°58'09.166"W	1.21	
9228.00	91.940	90.400	7151.90	2314.00	-297.56	2307.46	40°11'12.904"N	104°58'08.059"W	1.27	
9314.00	91.260	89.870	7149.49	2399.95	-297.77	2393.42	40°11'12.902"N	104°58'06.951"W	1.00	
9400.00	90.890	90.250	7147.88	2485.91	-297.86	2479.41	40°11'12.901"N	104°58'05.843"W	0.62	
9492.00	88.400	91.520	7148.45	2577.89	-299.28	2571.38	40°11'12.887"N	104°58'04.658"W	3.04	
9584.00	88.460	91.870	7150.97	2669.86	-302.00	2663.31	40°11'12.860"N	104°58'03.474"W	0.39	
9676.00	89.780	92.110	7152.38	2761.84	-305.19	2755.24	40°11'12.829"N	104°58'02.289"W	1.46	
9768.00	90.250	90.540	7152.36	2853.84	-307.32	2847.21	40°11'12.807"N	104°58'01.104"W	1.78	
9860.00	90.520	90.740	7151.74	2945.83	-308.35	2939.21	40°11'12.797"N	104°57'59.919"W	0.37	
9952.00	90.180	89.570	7151.18	3037.80	-308.59	3031.20	40°11'12.795"N	104°57'58.733"W	1.32	
10043.00	89.230	88.210	7151.65	3128.71	-306.83	3122.18	40°11'12.812"N	104°57'57.561"W	1.82	

REFERENCE WELLPATH IDENTIFICATION			
Operator	KERR-MCGEE OIL & GAS ONSHORE LP	Slot	SLOT#17 HANSEN STATE 1N-36HZ (721'FNL & 693'FWL, SEC. 35)
Area	COLORADO	Well	HANSEN STATE 1N-36HZ
Field	WELD COUNTY (KERR MCGEE)	Wellbore	HANSEN STATE 1N-36HZ AWP
Facility	SEC.35-T3N-R68W		

## WELLPATH DATA (167 stations)

MD [ft]	Inclination [°]	Azimuth [°]	TVD [ft]	Vert Sect [ft]	North [ft]	East [ft]	Latitude	Longitude	DLS [°/100ft]	Comments
10135.00	87.780	88.670	7154.05	3220.55	-304.33	3214.11	40°11'12.837"N	104°57'56.377"W	1.65	
10226.00	87.260	88.860	7157.99	3311.37	-302.37	3305.01	40°11'12.856"N	104°57'55.206"W	0.61	
10318.00	87.160	88.730	7162.46	3403.17	-300.44	3396.88	40°11'12.875"N	104°57'54.022"W	0.18	
10410.00	87.100	89.000	7167.07	3494.97	-298.62	3488.74	40°11'12.893"N	104°57'52.838"W	0.30	
10502.00	86.550	88.900	7172.17	3586.74	-296.93	3580.59	40°11'12.909"N	104°57'51.655"W	0.61	
10594.00	88.620	88.510	7176.04	3678.55	-294.86	3672.47	40°11'12.930"N	104°57'50.471"W	2.29	
10686.00	91.230	89.890	7176.16	3770.48	-293.57	3764.46	40°11'12.942"N	104°57'49.286"W	3.21	
10778.00	92.430	89.730	7173.23	3862.39	-293.27	3856.41	40°11'12.945"N	104°57'48.101"W	1.32	
10868.00	91.840	90.210	7169.87	3952.30	-293.22	3946.34	40°11'12.945"N	104°57'46.942"W	0.84	
10960.00	88.420	89.820	7169.66	4044.26	-293.24	4038.33	40°11'12.945"N	104°57'45.757"W	3.74	
11052.00	88.430	89.890	7172.19	4136.19	-293.01	4130.29	40°11'12.947"N	104°57'44.572"W	0.08	
11145.00	89.070	89.790	7174.22	4229.14	-292.75	4223.27	40°11'12.949"N	104°57'43.374"W	0.70	
11238.00	90.730	89.880	7174.38	4322.10	-292.48	4316.27	40°11'12.952"N	104°57'42.176"W	1.79	
11331.00	89.660	89.920	7174.07	4415.06	-292.32	4409.27	40°11'12.953"N	104°57'40.977"W	1.15	
11424.00	89.500	90.980	7174.75	4508.05	-293.05	4502.26	40°11'12.946"N	104°57'39.779"W	1.15	
11517.00	89.010	90.520	7175.96	4601.03	-294.27	4595.24	40°11'12.934"N	104°57'38.581"W	0.72	
11610.00	88.790	90.910	7177.74	4694.01	-295.43	4688.22	40°11'12.922"N	104°57'37.383"W	0.48	
11703.00	89.100	90.220	7179.46	4786.98	-296.35	4781.20	40°11'12.913"N	104°57'36.185"W	0.81	
11796.00	88.950	89.570	7181.04	4879.94	-296.18	4874.18	40°11'12.914"N	104°57'34.987"W	0.72	
11888.00	89.320	89.390	7182.43	4971.88	-295.34	4966.17	40°11'12.923"N	104°57'33.802"W	0.45	
11981.00	89.260	89.220	7183.58	5064.81	-294.21	5059.15	40°11'12.933"N	104°57'32.604"W	0.19	
12075.00	89.900	89.490	7184.27	5158.74	-293.15	5153.14	40°11'12.944"N	104°57'31.393"W	0.74	
12168.00	89.290	88.610	7184.93	5251.66	-291.61	5246.13	40°11'12.959"N	104°57'30.194"W	1.15	
12253.00	89.930	89.550	7185.50	5336.59	-290.25	5331.11	40°11'12.972"N	104°57'29.099"W	1.34	
12338.00	88.640	89.880	7186.57	5421.55	-289.82	5416.10	40°11'12.976"N	104°57'28.004"W	1.57	
12423.00	88.890	90.360	7188.40	5506.50	-290.00	5501.08	40°11'12.974"N	104°57'26.909"W	0.64	
12508.00	89.320	90.660	7189.73	5591.48	-290.76	5586.07	40°11'12.966"N	104°57'25.814"W	0.62	
12594.00	89.840	90.970	7190.36	5677.48	-291.98	5672.06	40°11'12.954"N	104°57'24.706"W	0.70	
12679.00	90.670	91.310	7189.98	5762.47	-293.67	5757.04	40°11'12.937"N	104°57'23.611"W	1.06	
12786.00	91.660	91.850	7187.80	5869.45	-296.62	5863.98	40°11'12.908"N	104°57'22.234"W	1.05	
12871.00	91.040	91.910	7185.80	5954.42	-299.41	5948.91	40°11'12.880"N	104°57'21.139"W	0.73	
12957.00	91.290	90.600	7184.05	6040.40	-301.29	6034.87	40°11'12.861"N	104°57'20.032"W	1.55	
13042.00	91.320	89.430	7182.11	6125.36	-301.32	6119.84	40°11'12.861"N	104°57'18.937"W	1.38	
13127.00	90.490	88.320	7180.77	6210.26	-299.65	6204.81	40°11'12.877"N	104°57'17.842"W	1.63	
13212.00	89.420	88.120	7180.84	6295.13	-297.01	6289.77	40°11'12.903"N	104°57'16.747"W	1.28	
13298.00	89.230	88.270	7181.85	6380.99	-294.30	6375.72	40°11'12.930"N	104°57'15.640"W	0.28	
13383.00	89.600	88.690	7182.72	6465.87	-292.04	6460.69	40°11'12.952"N	104°57'14.545"W	0.66	
13468.00	89.970	89.240	7183.04	6550.80	-290.51	6545.67	40°11'12.967"N	104°57'13.450"W	0.78	
13553.00	89.570	89.080	7183.38	6635.73	-289.26	6630.66	40°11'12.979"N	104°57'12.355"W	0.51	
13638.00	89.630	89.030	7183.97	6720.66	-287.86	6715.65	40°11'12.992"N	104°57'11.260"W	0.09	
13723.00	90.400	89.840	7183.95	6805.61	-287.02	6800.64	40°11'13.000"N	104°57'10.165"W	1.31	
13808.00	89.820	89.870	7183.79	6890.58	-286.81	6885.64	40°11'13.002"N	104°57'09.070"W	0.68	
13893.00	90.250	89.970	7183.74	6975.55	-286.69	6970.64	40°11'13.003"N	104°57'07.974"W	0.52	
13978.00	89.630	89.190	7183.83	7060.51	-286.07	7055.64	40°11'13.009"N	104°57'06.879"W	1.17	
14064.00	88.550	88.650	7185.19	7146.41	-284.45	7141.61	40°11'13.025"N	104°57'05.771"W	1.40	

REFERENCE WELLPATH IDENTIFICATION			
Operator	KERR-MCGEE OIL & GAS ONSHORE LP	Slot	SLOT#17 HANSEN STATE 1N-36HZ (721'FNL & 693'FWL, SEC. 35)
Area	COLORADO	Well	HANSEN STATE 1N-36HZ
Field	WELD COUNTY (KERR MCGEE)	Wellbore	HANSEN STATE 1N-36HZ AWP
Facility	SEC.35-T3N-R68W		

WELLPATH DATA (167 stations)										
MD [ft]	Inclination [°]	Azimuth [°]	TVD [ft]	Vert Sect [ft]	North [ft]	East [ft]	Latitude	Longitude	DLS [°/100ft]	Comments
14149.00	88.700	88.700	7187.23	7231.29	-282.48	7226.56	40°11'13.044"N	104°57'04.677"W	0.19	
14234.00	89.260	89.150	7188.74	7316.20	-280.89	7311.53	40°11'13.060"N	104°57'03.582"W	0.85	
14319.00	89.260	89.830	7189.84	7401.15	-280.13	7396.52	40°11'13.067"N	104°57'02.487"W	0.80	
14404.00	90.670	93.030	7189.89	7486.13	-282.25	7481.48	40°11'13.046"N	104°57'01.392"W	4.11	
14489.00	90.000	94.690	7189.40	7571.05	-287.97	7566.29	40°11'12.989"N	104°57'00.300"W	2.11	
14575.00	88.490	94.100	7190.53	7656.92	-294.56	7652.02	40°11'12.923"N	104°56'59.195"W	1.89	
14660.00	89.070	94.380	7192.34	7741.80	-300.84	7736.77	40°11'12.861"N	104°56'58.103"W	0.76	
14745.00	89.160	94.170	7193.65	7826.68	-307.18	7821.52	40°11'12.798"N	104°56'57.011"W	0.27	
14830.00	88.180	92.690	7195.63	7911.60	-312.26	7906.35	40°11'12.748"N	104°56'55.918"W	2.09	
14915.00	88.550	93.000	7198.05	7996.54	-316.48	7991.21	40°11'12.706"N	104°56'54.825"W	0.57	
15000.00	89.380	93.420	7199.59	8081.48	-321.24	8076.06	40°11'12.658"N	104°56'53.731"W	1.09	
15085.00	90.000	93.730	7200.05	8166.41	-326.54	8160.89	40°11'12.606"N	104°56'52.638"W	0.82	
15171.00	89.260	93.410	7200.60	8252.35	-331.90	8246.72	40°11'12.553"N	104°56'51.532"W	0.94	
15256.00	89.690	93.670	7201.38	8337.29	-337.14	8331.56	40°11'12.501"N	104°56'50.439"W	0.59	
15341.00	90.520	91.350	7201.22	8422.26	-340.87	8416.47	40°11'12.463"N	104°56'49.345"W	2.90	
15426.00	90.490	89.910	7200.48	8507.25	-341.80	8501.46	40°11'12.454"N	104°56'48.250"W	1.69	
15511.00	89.940	89.640	7200.16	8592.22	-341.47	8586.46	40°11'12.457"N	104°56'47.155"W	0.72	
15597.00	90.340	90.200	7199.95	8678.19	-341.35	8672.45	40°11'12.458"N	104°56'46.047"W	0.80	
15682.00	89.510	88.840	7200.06	8763.14	-340.63	8757.45	40°11'12.465"N	104°56'44.952"W	1.87	
15766.00	89.010	87.030	7201.14	8846.97	-337.61	8841.38	40°11'12.494"N	104°56'43.870"W	2.24	
15851.00	89.420	87.540	7202.31	8931.75	-333.58	8926.28	40°11'12.534"N	104°56'42.777"W	0.77	
15936.00	88.800	86.350	7203.63	9016.48	-329.05	9011.15	40°11'12.578"N	104°56'41.683"W	1.58	
16021.00	90.030	84.360	7204.49	9101.00	-322.17	9095.86	40°11'12.646"N	104°56'40.591"W	2.75	
16106.00	90.890	84.440	7203.81	9185.36	-313.88	9180.45	40°11'12.727"N	104°56'39.502"W	1.02	
16191.00	90.800	83.280	7202.56	9269.62	-304.79	9264.95	40°11'12.817"N	104°56'38.413"W	1.37	
16274.00	89.780	82.790	7202.14	9351.74	-294.72	9347.33	40°11'12.916"N	104°56'37.351"W	1.36	
16358.00	90.490	82.520	7201.94	9434.76	-283.98	9430.64	40°11'13.022"N	104°56'36.278"W	0.90	
16443.00	91.320	83.150	7200.60	9518.80	-273.38	9514.97	40°11'13.126"N	104°56'35.191"W	1.23	
16528.00	89.930	83.530	7199.67	9602.96	-263.52	9599.39	40°11'13.223"N	104°56'34.103"W	1.70	
16613.00	90.760	84.000	7199.16	9687.20	-254.29	9683.88	40°11'13.314"N	104°56'33.015"W	1.12	
16707.00	91.970	84.550	7196.92	9780.45	-244.92	9777.39	40°11'13.407"N	104°56'31.810"W	1.41	LAST BHI MWD+IFR SURVEY
16769.00	91.970	84.550	7194.79	9841.97	-239.03	9839.07	40°11'13.465"N	104°56'31.015"W	0.00	PROJECTION TO BIT

REFERENCE WELLPATH IDENTIFICATION			
Operator	KERR-MCGEE OIL & GAS ONSHORE LP	Slot	SLOT#17 HANSEN STATE 1N-36HZ (721'FNL & 693'FWL, SEC. 35)
Area	COLORADO	Well	HANSEN STATE 1N-36HZ
Field	WELD COUNTY (KERR MCGEE)	Wellbore	HANSEN STATE 1N-36HZ AWB
Facility	SEC.35-T3N-R68W		

HOLE & CASING SECTIONS - Ref Wellbore: HANSEN STATE 1N-36HZ AWB Ref Wellpath: HANSEN STATE 1N-36HZ AWP									
String/Diameter	Start MD [ft]	End MD [ft]	Interval [ft]	Start TVD [ft]	End TVD [ft]	Start N/S [ft]	Start E/W [ft]	End N/S [ft]	End E/W [ft]
13.5in Open Hole	16.00	1132.00	1116.00	16.00	1131.98	0.00	0.00	-2.74	-1.54
9.625in Casing Surface	16.00	1132.00	1116.00	16.00	1131.98	0.00	0.00	-2.74	-1.54
8.75in Open Hole	1132.00	7500.00	6368.00	1131.98	7144.08	-2.74	-1.54	-286.94	580.07
7in Casing Intermediate	16.00	7490.00	7474.00	16.00	7143.30	0.00	0.00	-287.54	570.12
6.125in Open Hole	7500.00	16769.00	9269.00	7144.08	7194.79	-286.94	580.07	-239.03	9839.07

WELLPATH COMPOSITION - Ref Wellbore: HANSEN STATE 1N-36HZ AWB Ref Wellpath: HANSEN STATE 1N-36HZ AWP				
Start MD [ft]	End MD [ft]	Positional Uncertainty Model	Log Name/Comment	Wellbore
16.00	1067.00	Generic gyro - continuous (Standard)	MS GYRO SURVEYS <116-1067>	HANSEN STATE 1N-36HZ AWB
1067.00	7438.00	NaviTrak (IFR)	BHI NAVITRAK MWD+IFR 8 3/4 <1183-7438>	HANSEN STATE 1N-36HZ AWB
7438.00	16707.00	NaviTrak (IFR)	BHI NAVITRAK MWD+IFR 6 1/8" <7558-16707>	HANSEN STATE 1N-36HZ AWB
16707.00	16769.00	Blind Drilling (std)	Projection to bit	HANSEN STATE 1N-36HZ AWB





# Actual Wellpath Report

HANSEN STATE 1N-36HZ AWP

Page 7 of 7



REFERENCE WELLPATH IDENTIFICATION			
Operator	KERR-MCGEE OIL & GAS ONSHORE LP	Slot	SLOT#17 HANSEN STATE 1N-36HZ (721'FNL & 693'FWL, SEC. 35)
Area	COLORADO	Well	HANSEN STATE 1N-36HZ
Field	WELD COUNTY (KERR MCGEE)	Wellbore	HANSEN STATE 1N-36HZ AWB
Facility	SEC.35-T3N-R68W		

WELLPATH COMMENTS				
MD [ft]	Inclination [°]	Azimuth [°]	TVD [ft]	Comment
16.00	0.000	173.620	16.00	TIE ON
116.00	0.340	173.620	116.00	BEGIN GYRO SURVEYS
1067.00	0.480	238.120	1066.98	TIE ONTO GYRO SURVEYS
1183.00	0.430	227.670	1182.98	BEGIN BHI MWD+IFR SURVEYS
7490.00	85.070	86.312	7143.30	7" CASING POINT
16707.00	91.970	84.550	7196.92	LAST BHI MWD+IFR SURVEY
16769.00	91.970	84.550	7194.79	PROJECTION TO BIT