



# RADIAL ANALYSIS BOND LOG

Baker Atlas

File No: CH085068	Company Well	SAMSON RESOURCES CO BONINE 34-7-24 #4	
API No: 05067097920000	Field County	IGNACIO BLANCO LA PLATA State COLORADO	
LEASE# 039805	Location LAT : 37.03581 LONG : -107.59350000 SHL: 1120' FNL & 1929' FEL SEC 10 TWP 32N RGE 7W	Other Services RPM	
Permanent Datum Log Measured From Drill Measured From	GL KB KELLY BUSHING	Elevation 12 ft Above P. D.	Elevations KB 6464.8 ft DF GL 6452.8 ft

Date	11/JUN/14	11/JUN/14
Run	ONE	
Service Order	US085068J	
Depth Driller	3608 ft	
Depth Logger	3536 ft	
Bottom Logged Interval	3526 ft	
Top Logged Interval	12 ft	
Time Started	1330	
Time Finished	1545	
Operator Rig Time	2.25 HRS	
Type of Fluid in Hole	WATER	
Fluid Density	NA	
Salinity	NA	
Fluid Level	32 ft	
Logged Cement Top	NA	
Wellhead Pressure	0 psi	
Maximum Hole Deviation	53.9 deg	
Nominal Logging Speed	65 fpm	
Maximum Recorded Temperature	NA	
Reference Log	NONE	
Reference Log Date	NA	
Equipment No.	4271	GRAND JCT
Recorded By	FLOYD RENEAU	
Witnessed By	DOUG ZENTZ	

- FOLD HERE

In making interpretations of logs, our employees will give the customer the benefit of their best judgement. But since all interpretations are opinions based on inferences from electrical or other measurements, we cannot, and we do not guarantee the accuracy or correctness of any interpretation. We shall not be liable or responsible for any loss, cost, damages, or expenses whatsoever incurred or sustained by the customer resulting from any interpretation made by any of our employees.

Borehole Record		
Bit Size	From	To
12.25 in	12 ft	355 ft
7.875 in	355 ft	3608 ft

Casing Record				
Size	Weight	Grade	From	To
8.625 in	24 lbm/ft	J-55	12 ft	355 ft
5.5 in	17 lbm/ft	J-55	12 ft	3608 ft

Remarks
This was the first log for this well.
Logged with zero PSI at wellhead.
Hit a tight spot @ 1792', took multiple attempts to get pass.
Had to run smaller Gemco to get though tight spot.
Due running smaller Gemco the tool not eccentered
it will have shorter transit time and resembling a zone of good cement.
SJ = 2379'-2401' & 3166'-3188'

Equipment Data					
Run	Trip	Tool	Series Number	Serial Number	Position
1	1	VDL	1426XA	10218496	CENT
1	1	GR/CCL	2459XA	10417456	CENT

PRIMARY PRESENTATION

0 PSI

MEASUREMENT TYPE	PARAMETER	VALUE	UNITS	TOP	BOTTOM
RAL	Amp Gate Start Far	325.000	usec	8.719	3545.000
RAL	Amp Gate Start Near	215.000	usec	8.719	3545.000
RAL	Amp Gate Start Radial	215.000	usec	8.719	3545.000
RAL	Amp Gate Width Far	25.000	usec	8.719	3545.000
RAL	Amp Gate Width Near	25.000	usec	8.719	3545.000
RAL	Amp Gate Width Radial	25.000	usec	8.719	3545.000
RAL	casing od	5.500	inches	8.719	3545.000
RAL	casing wt	17.000	lbm/ft	8.719	3545.000
RAL	FB Start Far	306.289	usec	8.719	3545.000
RAL	FB Start Near	189.780	usec	8.719	3545.000
RAL	FB Start Radial	189.780	usec	8.719	3545.000
RAL	FB Thresh Far	10.000	mv	8.719	3545.000
RAL	FB Thresh Near	4.000	mv	8.719	3545.000
RAL	FB Thresh Radial	4.000	mv	8.719	3545.000
RAL	Fluid Travel Time	200.000	usec/ft	8.719	3544.687

DEPTH OFFSETS

(for Acquired Curves)

SERIES	DEPTH OFFSET	ACQUIRED CURVES					
1426XA	-16.750	ACAL	ANR	AR1	AR2	AR3	AR4
		AR5	AR6	AR7	AR8	CLV	EDR2

1426XA -15.750  
2459XA -11.340  
2459XA -9.490  
2459XA -4.090

AR5	AR6	AR7	AR8	CHV	FPR2
FPR3	FPR5	TT3	TTR1	TTR2	TTR3
TTR4	TTR5	TTR6	TTR7	TTR8	XAMP
AFAR	SIG	TT5			
CCL					
GR					
NEU					

Created by : RAL, v4.8.008

Plotted by : PlotMgr, v5.4.504

Company : SAMSON RESOURCES CO

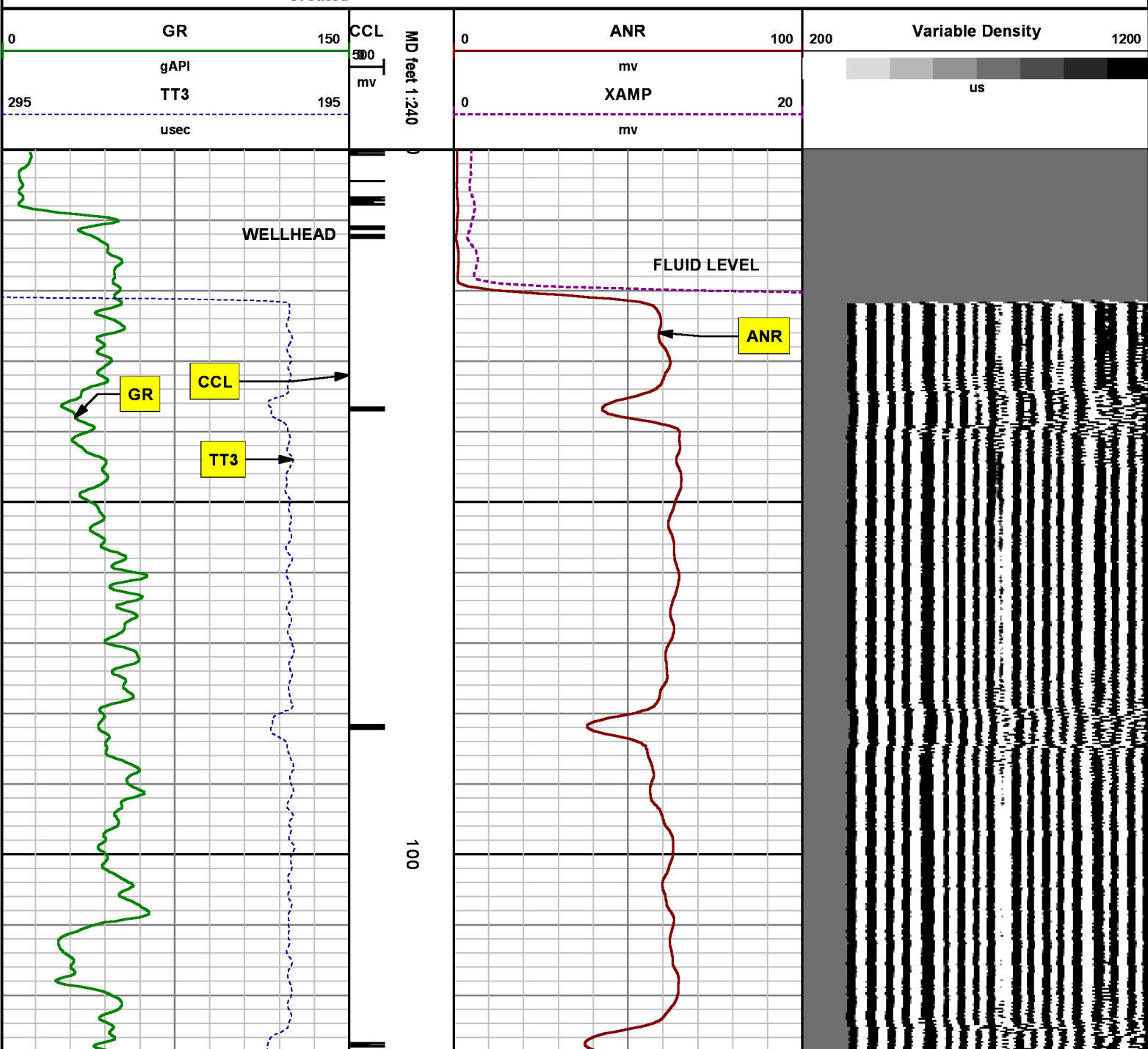
Well : BONINE 34-7-24 #4

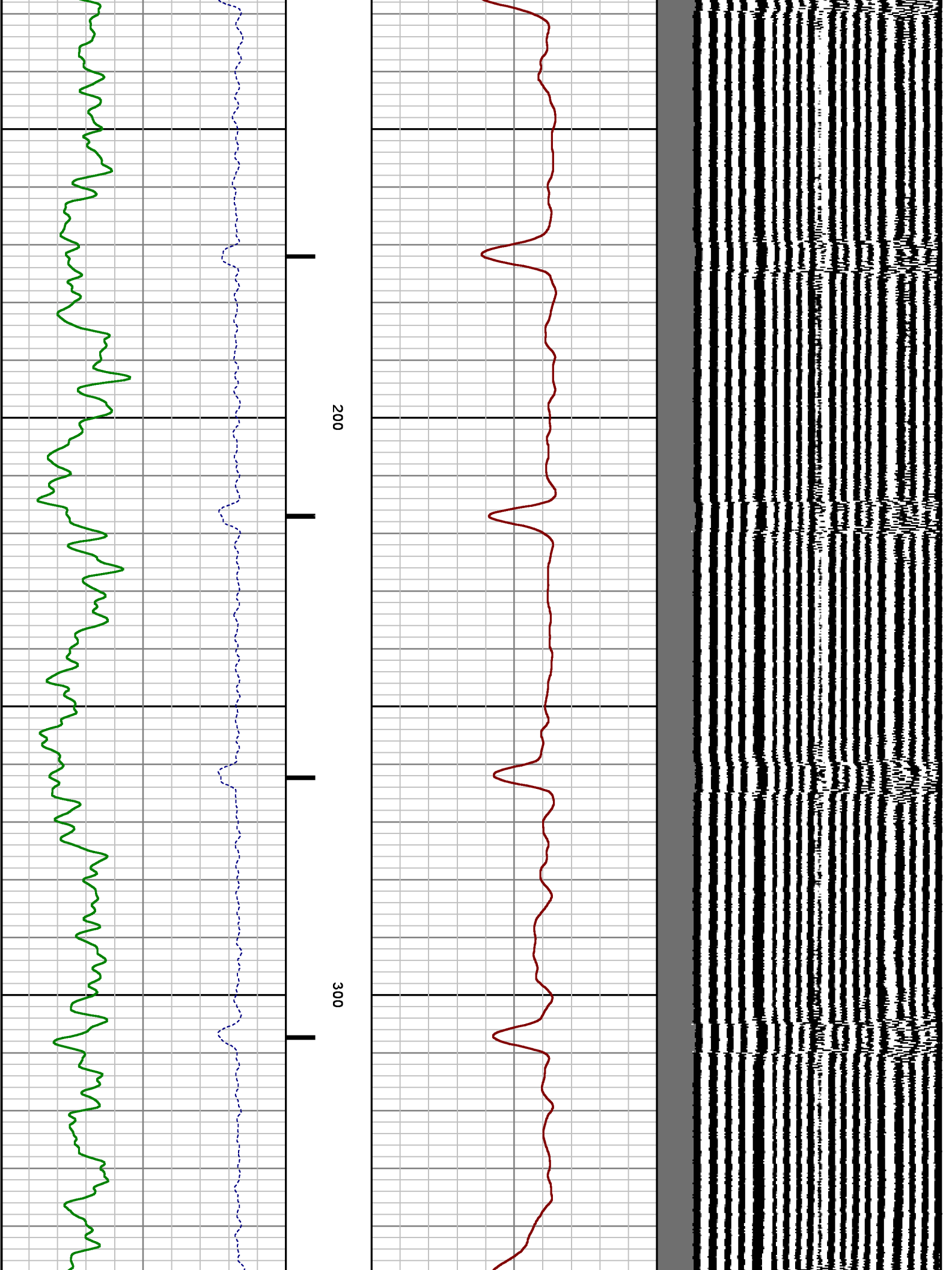
File Name : d:\welldata\samson\34-7-24 #4\4ral\main.xtf

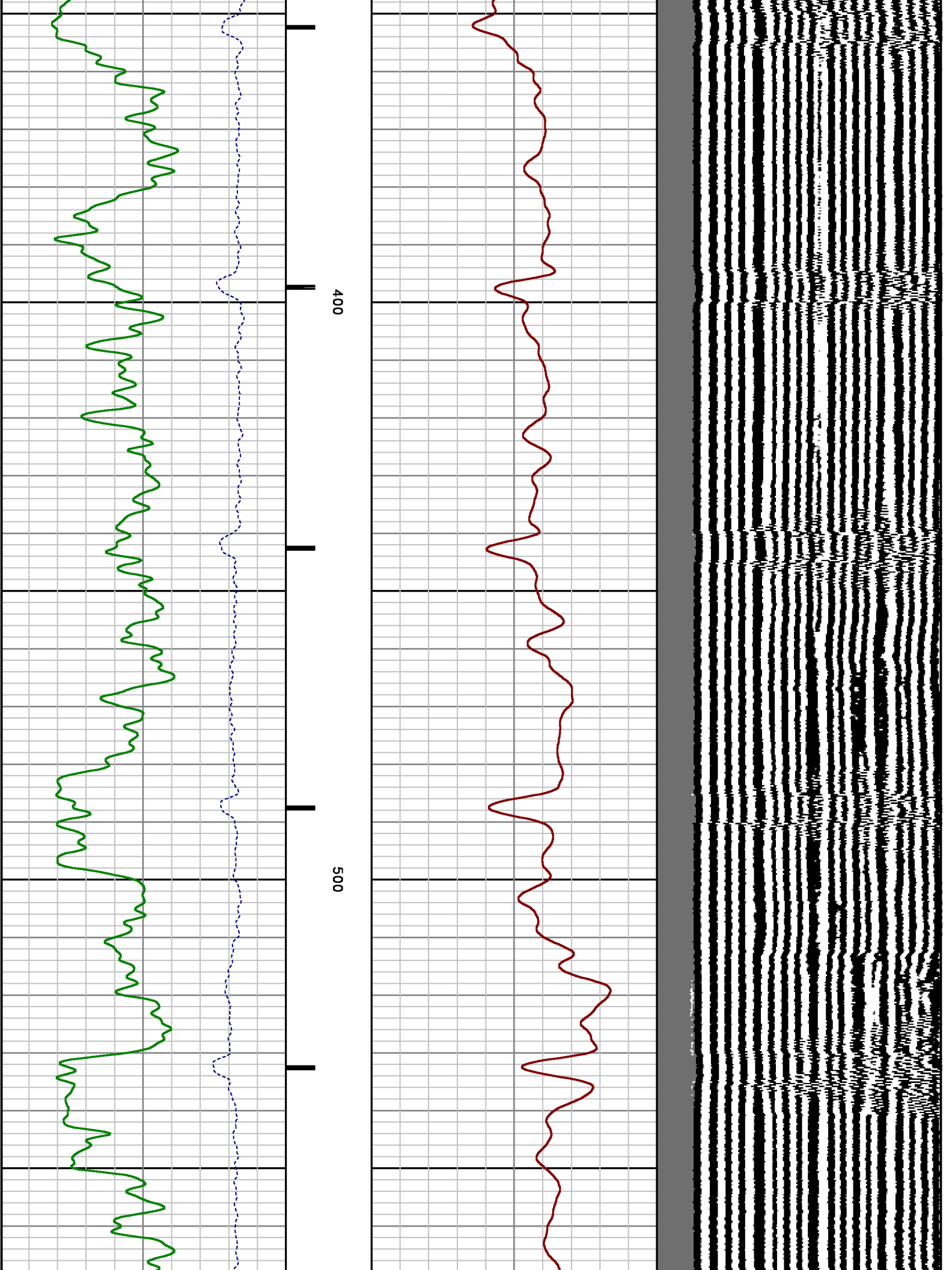
Mode : PlotMgr 5.4.504

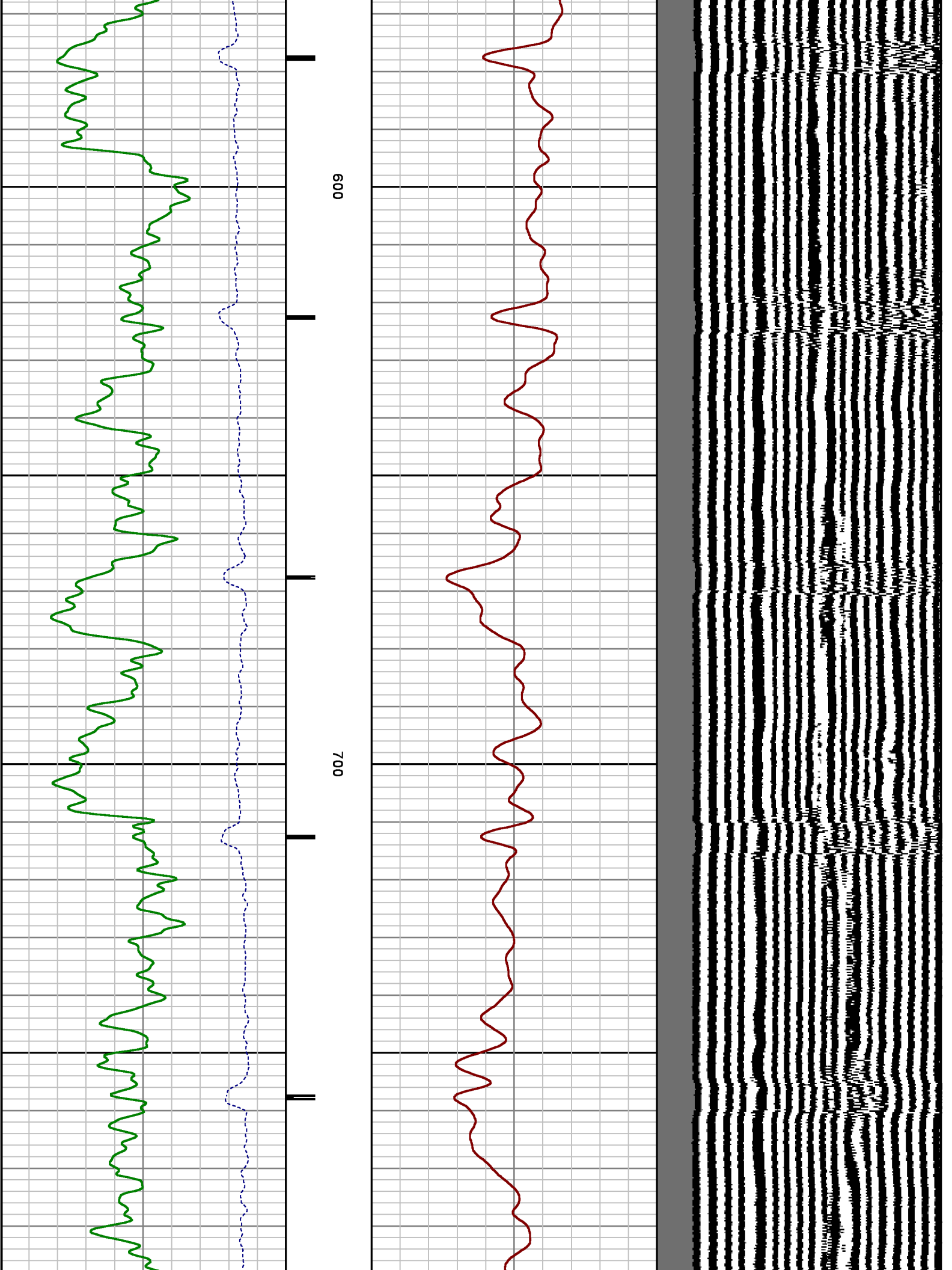
Interval : 0.00 - 3539.00 feet UP

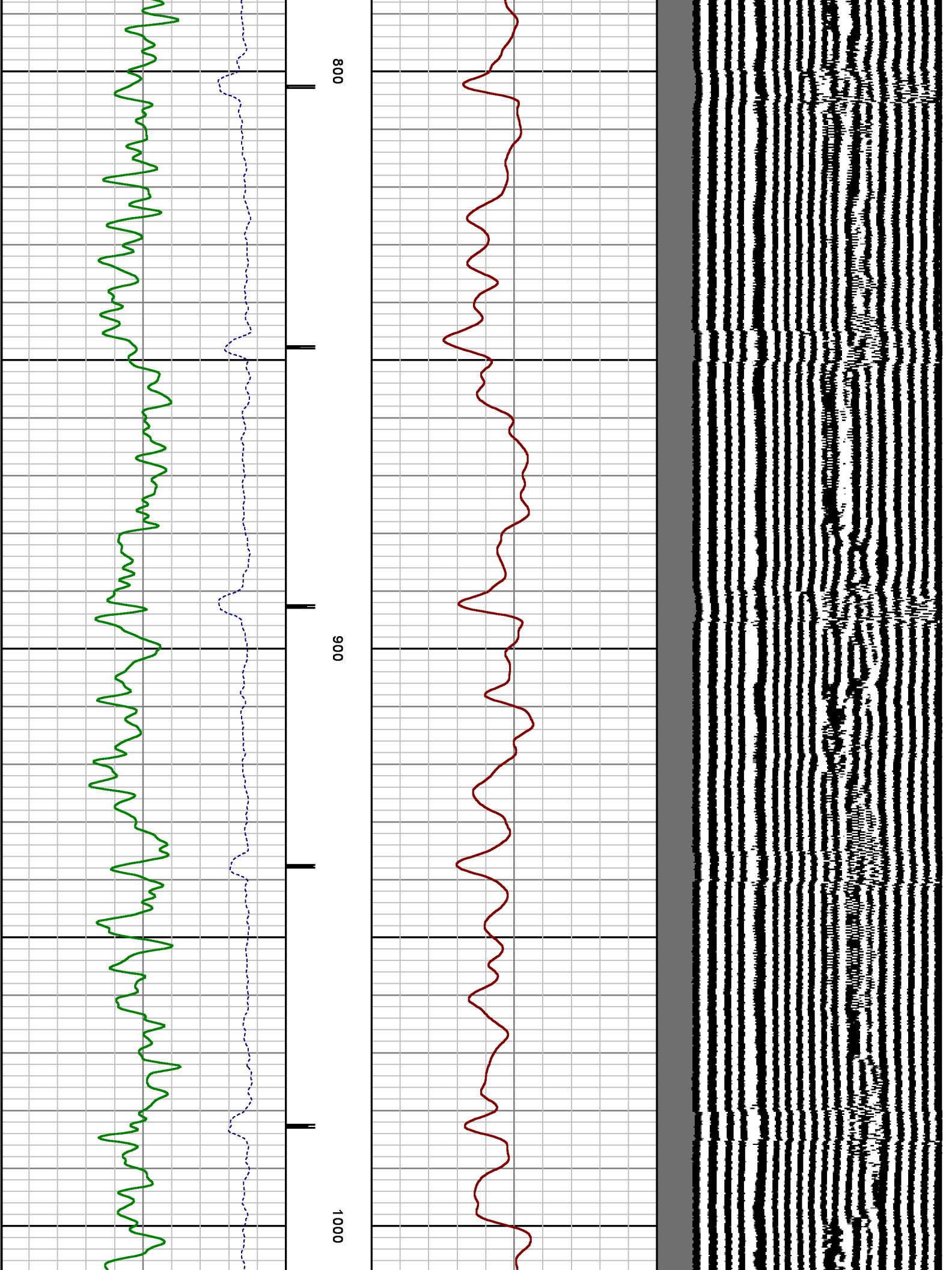
Created : 6/11/2014 2:54:26 PM

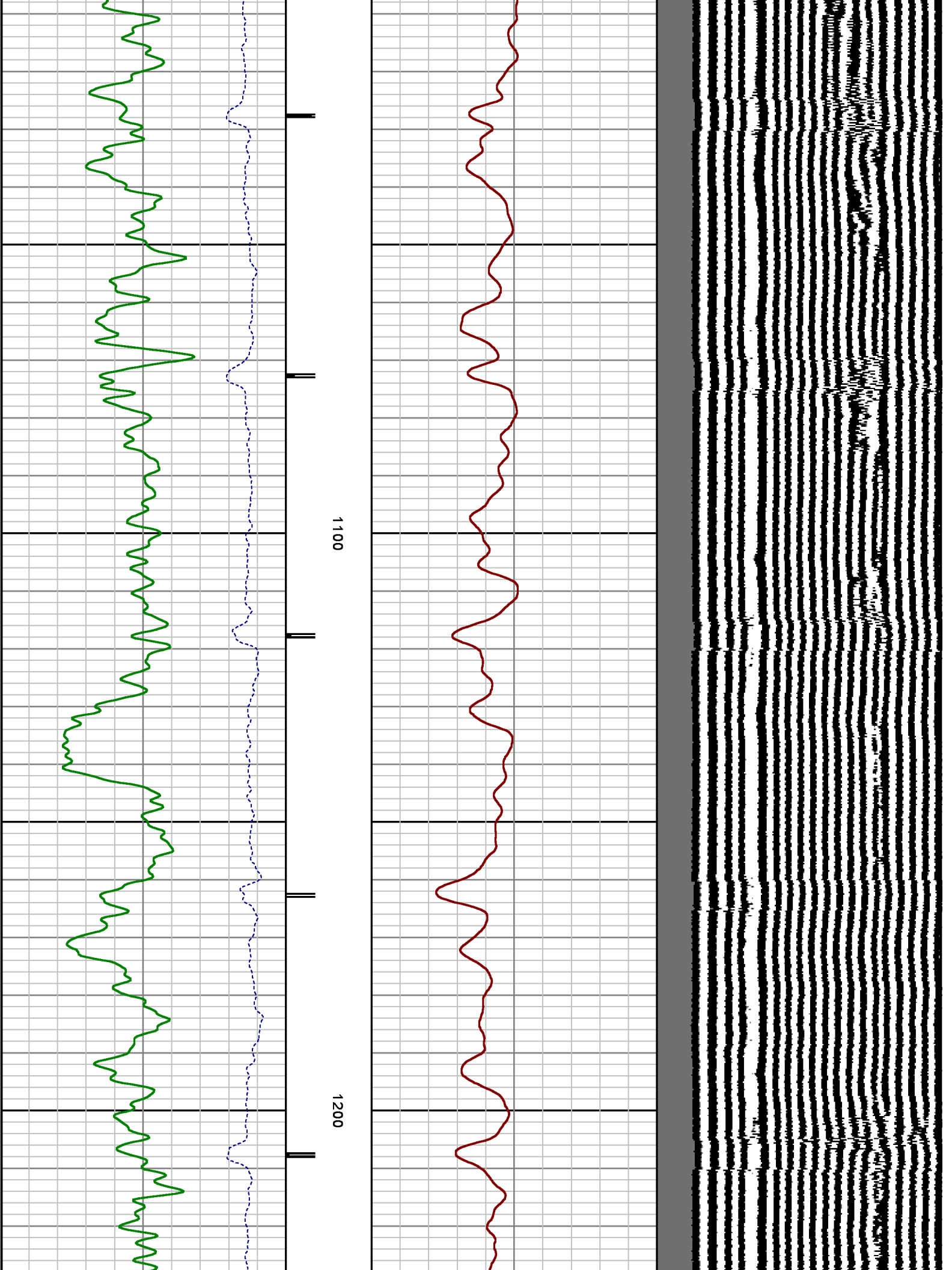




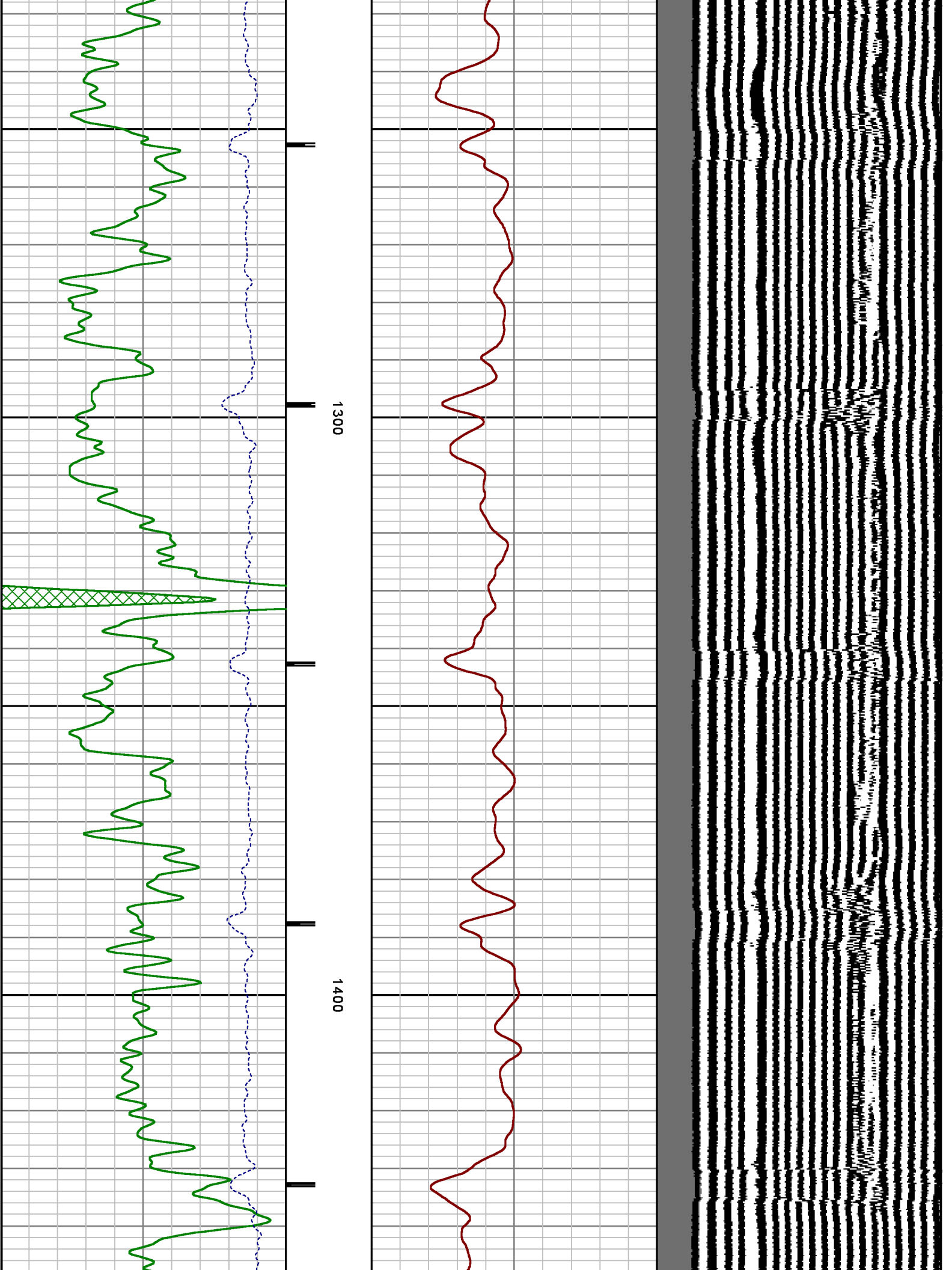


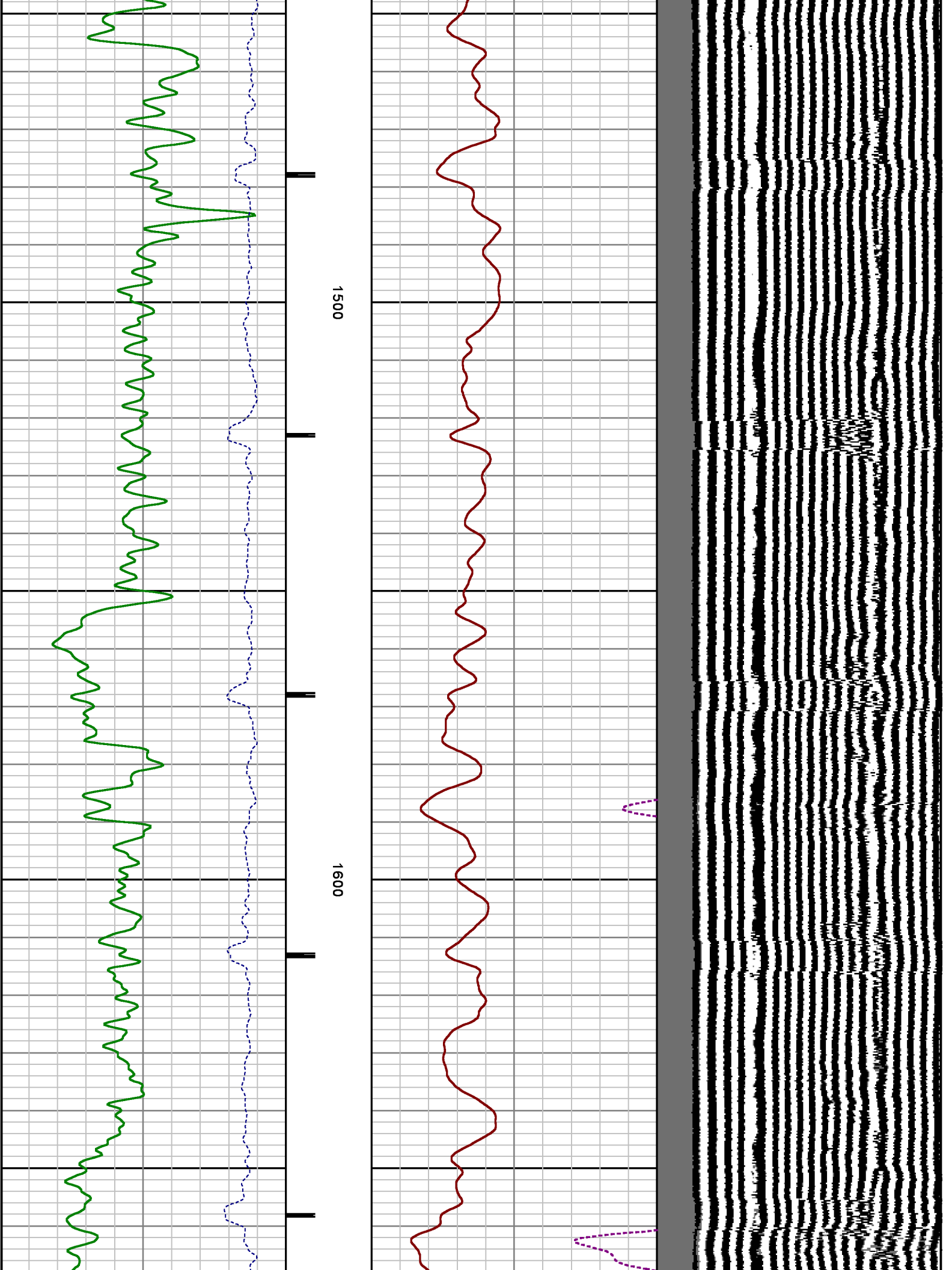


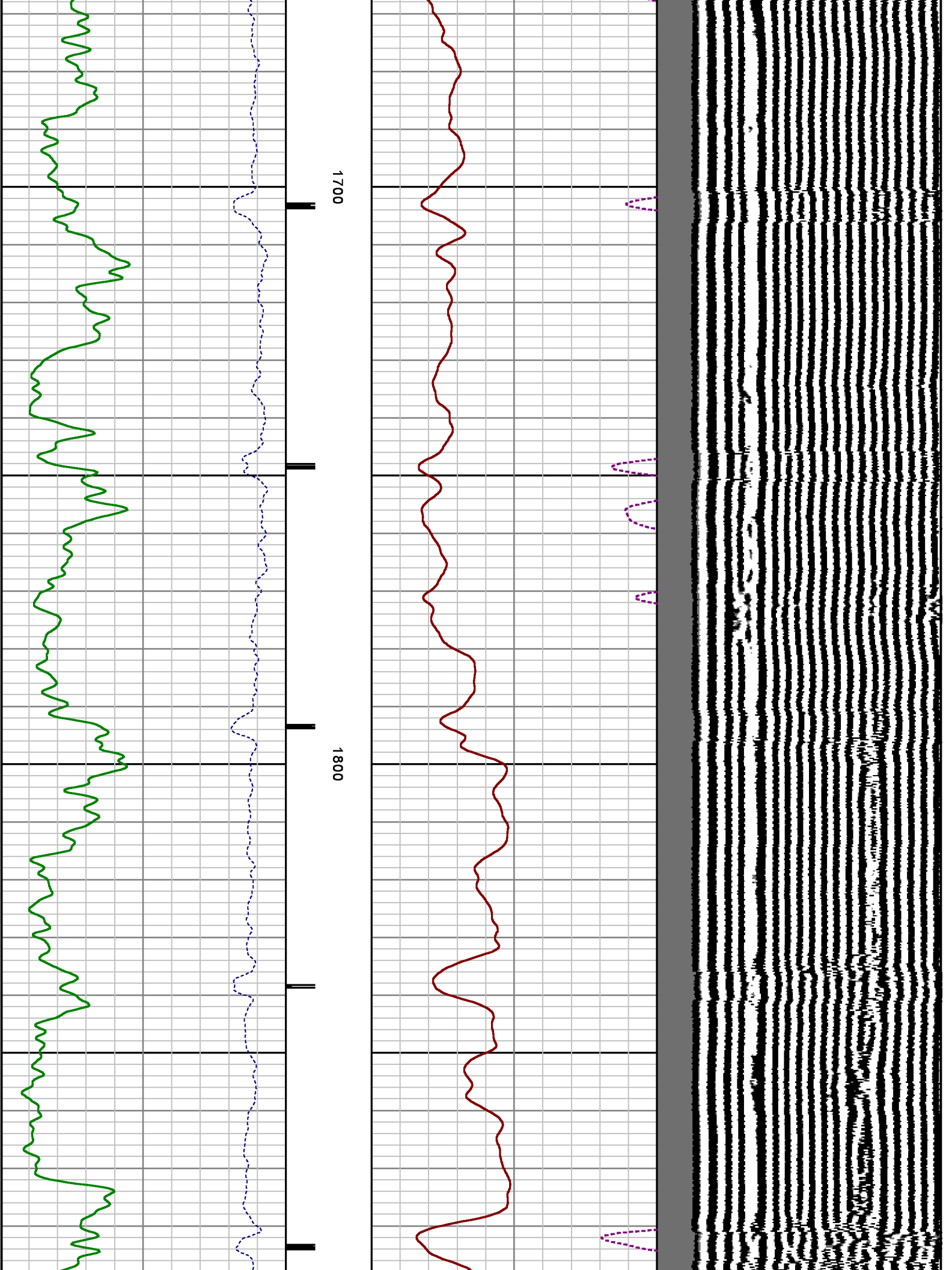


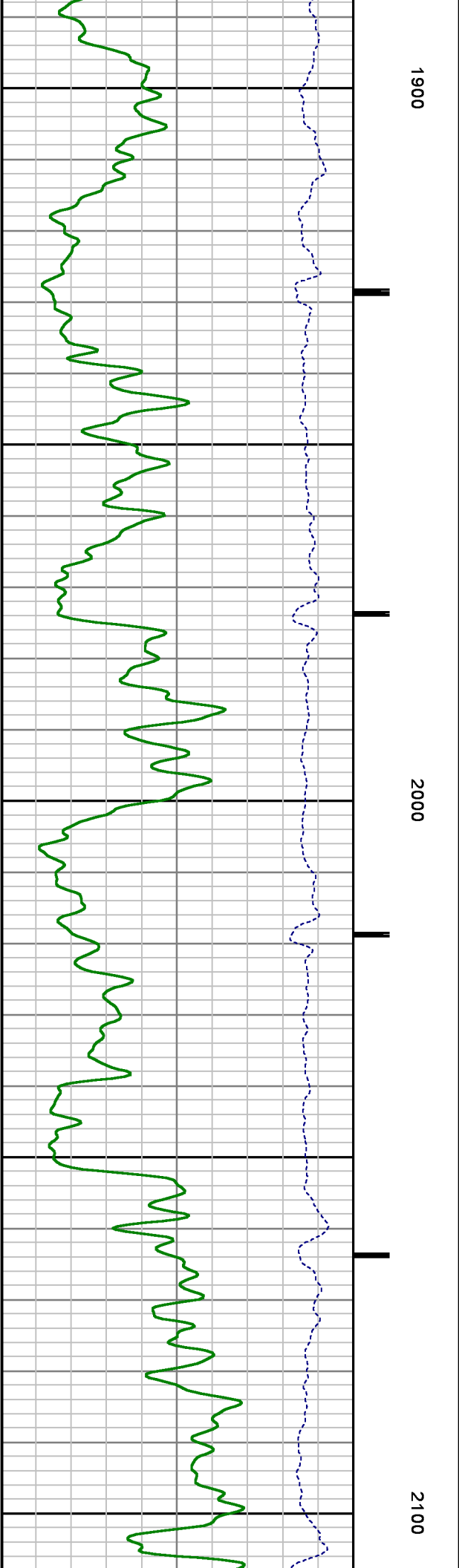
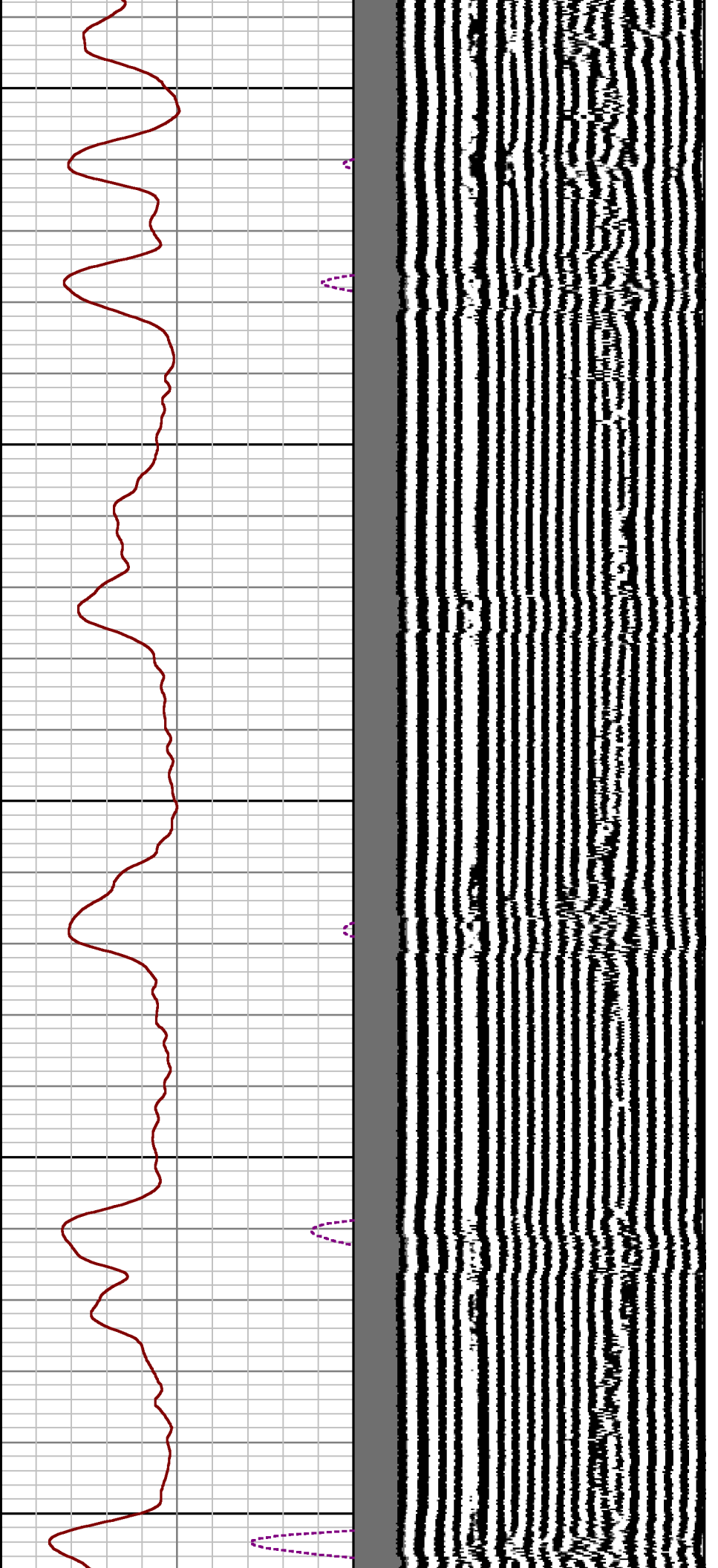


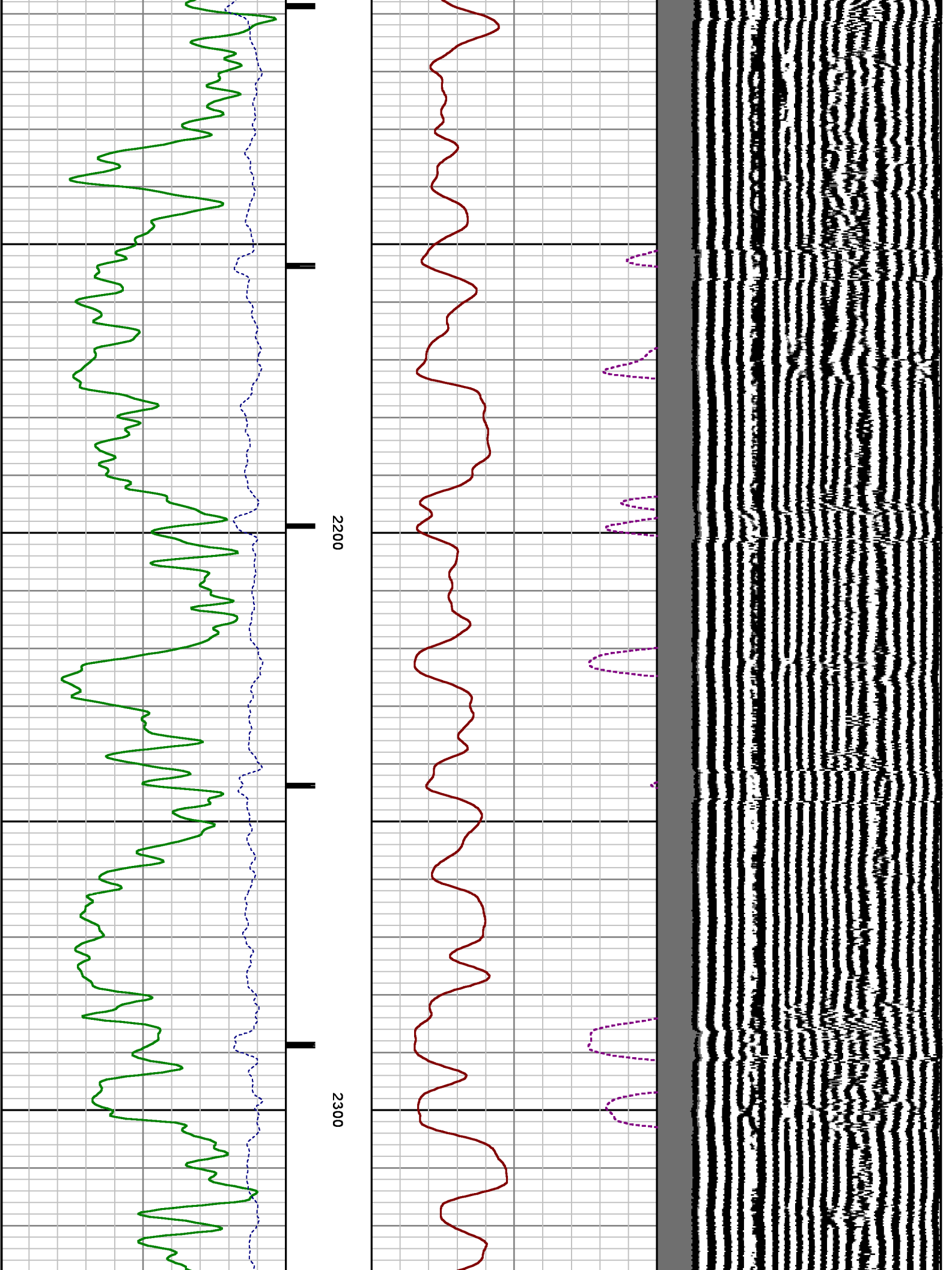


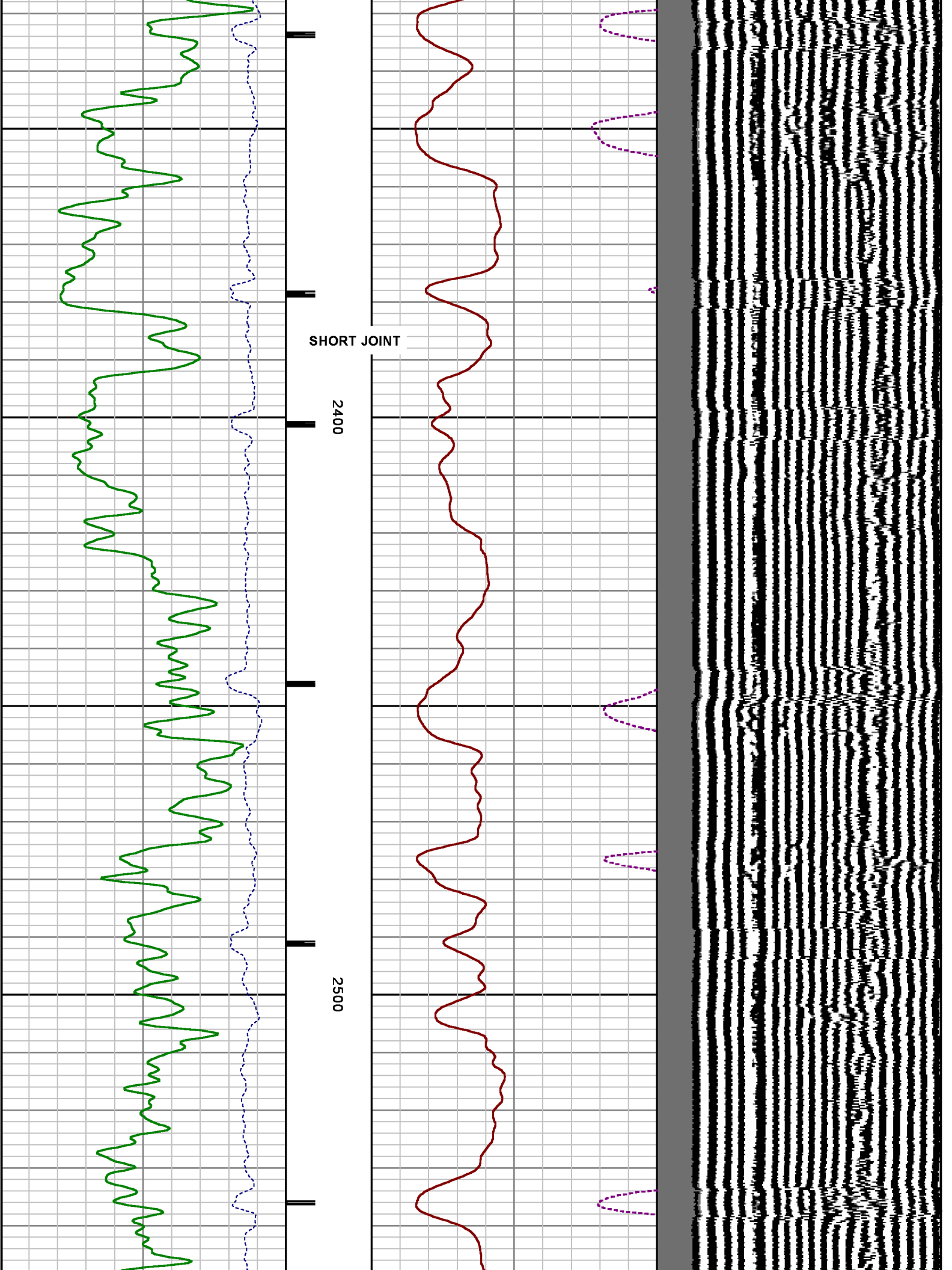




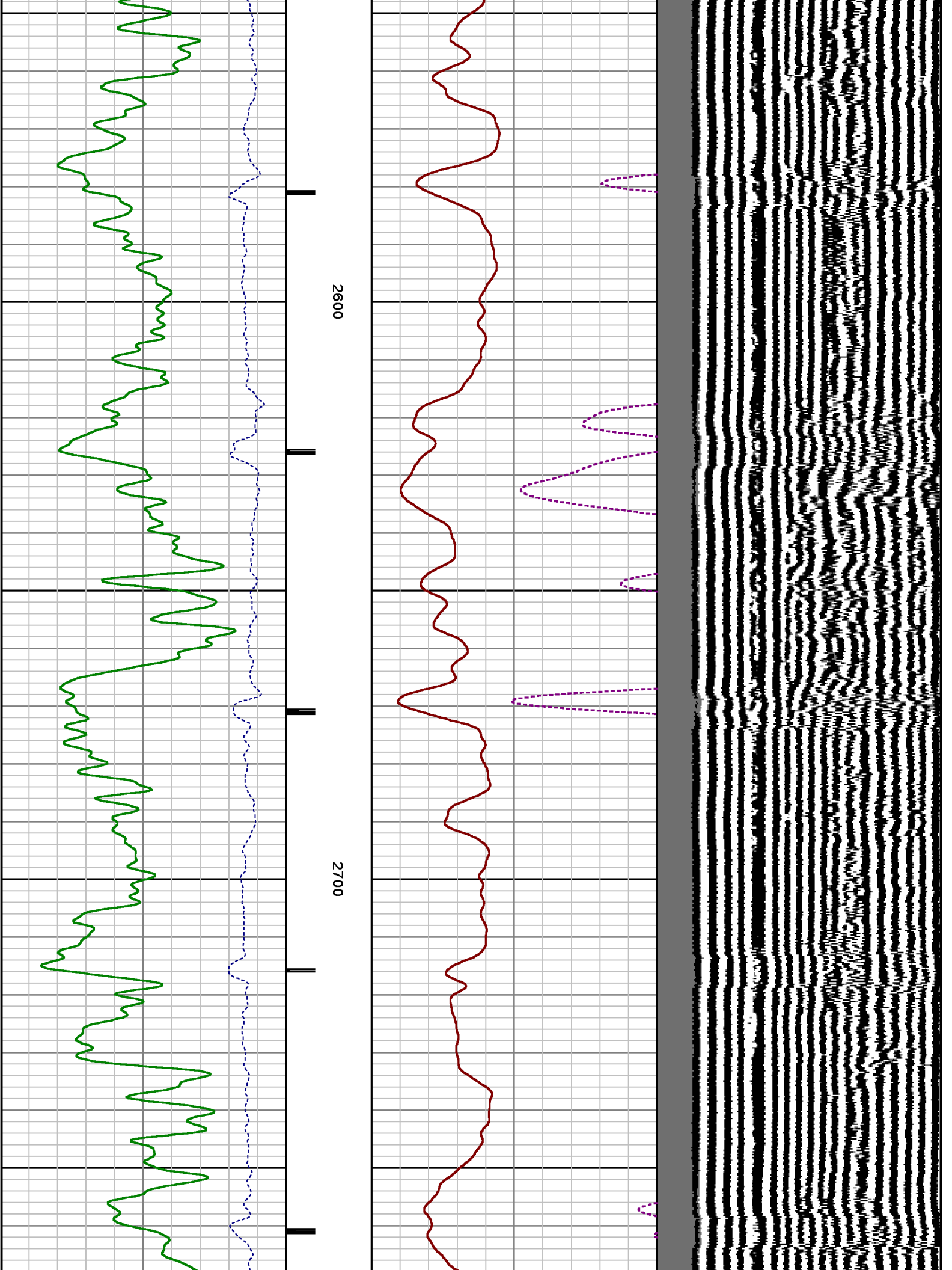


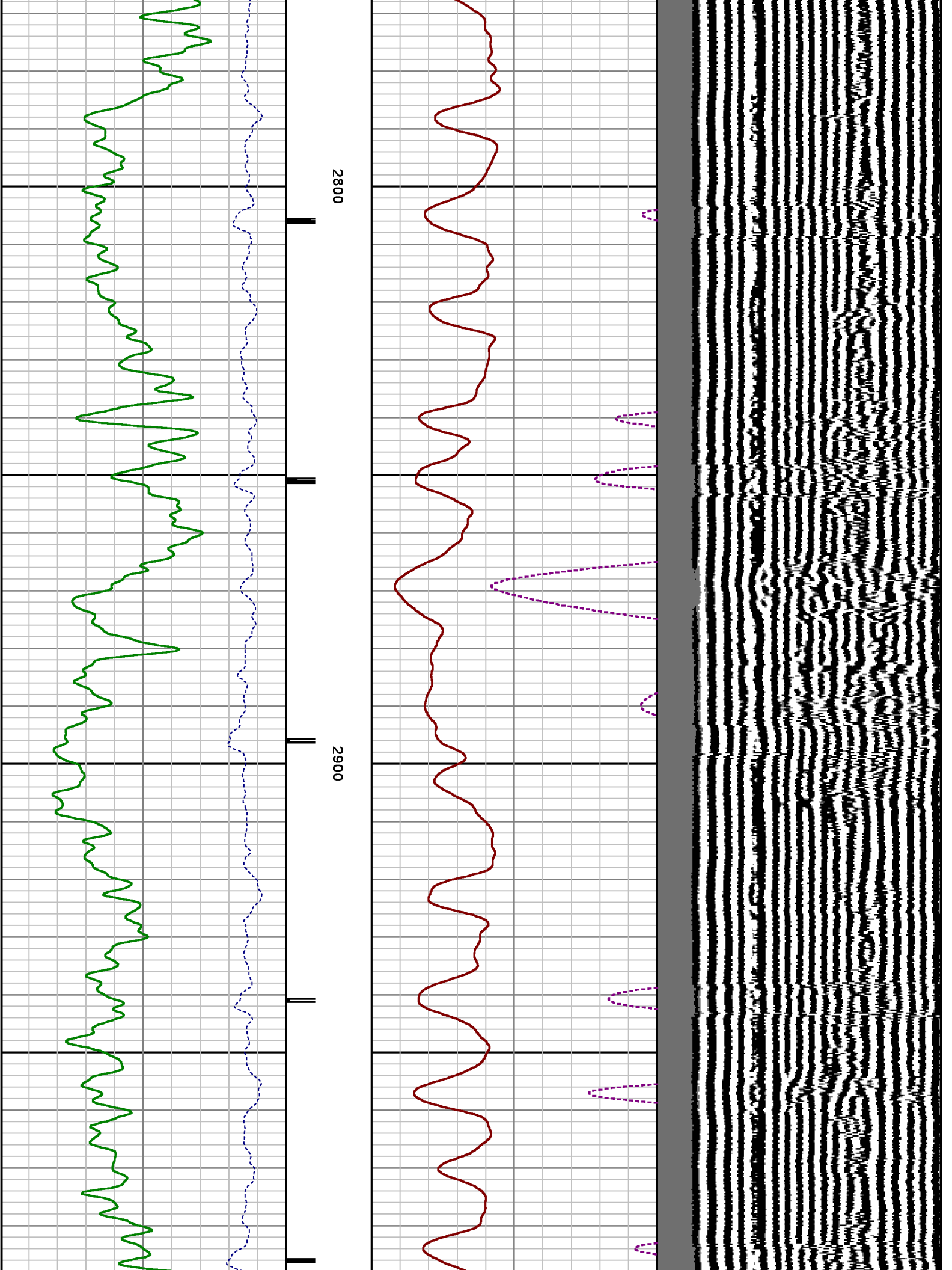




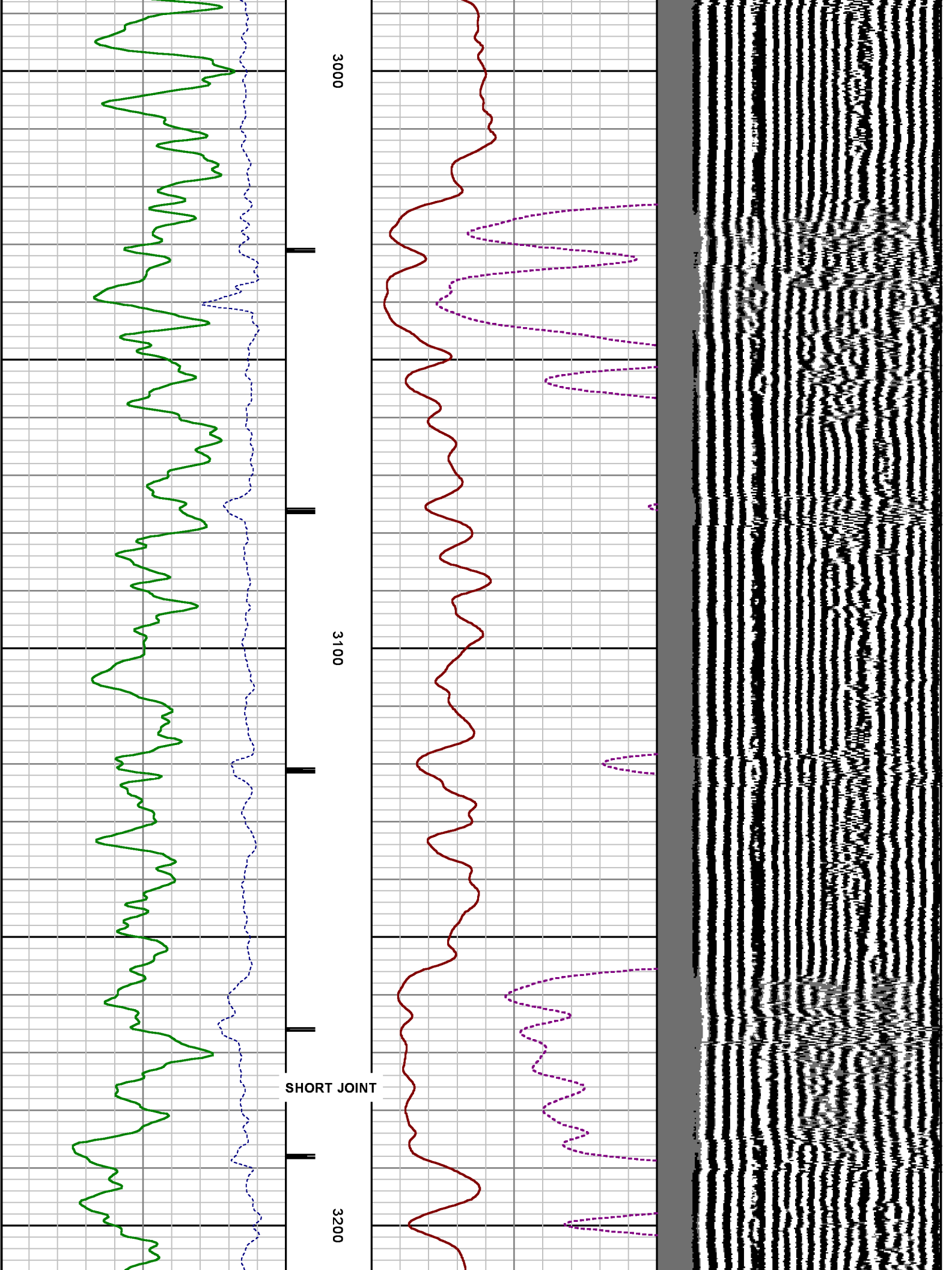


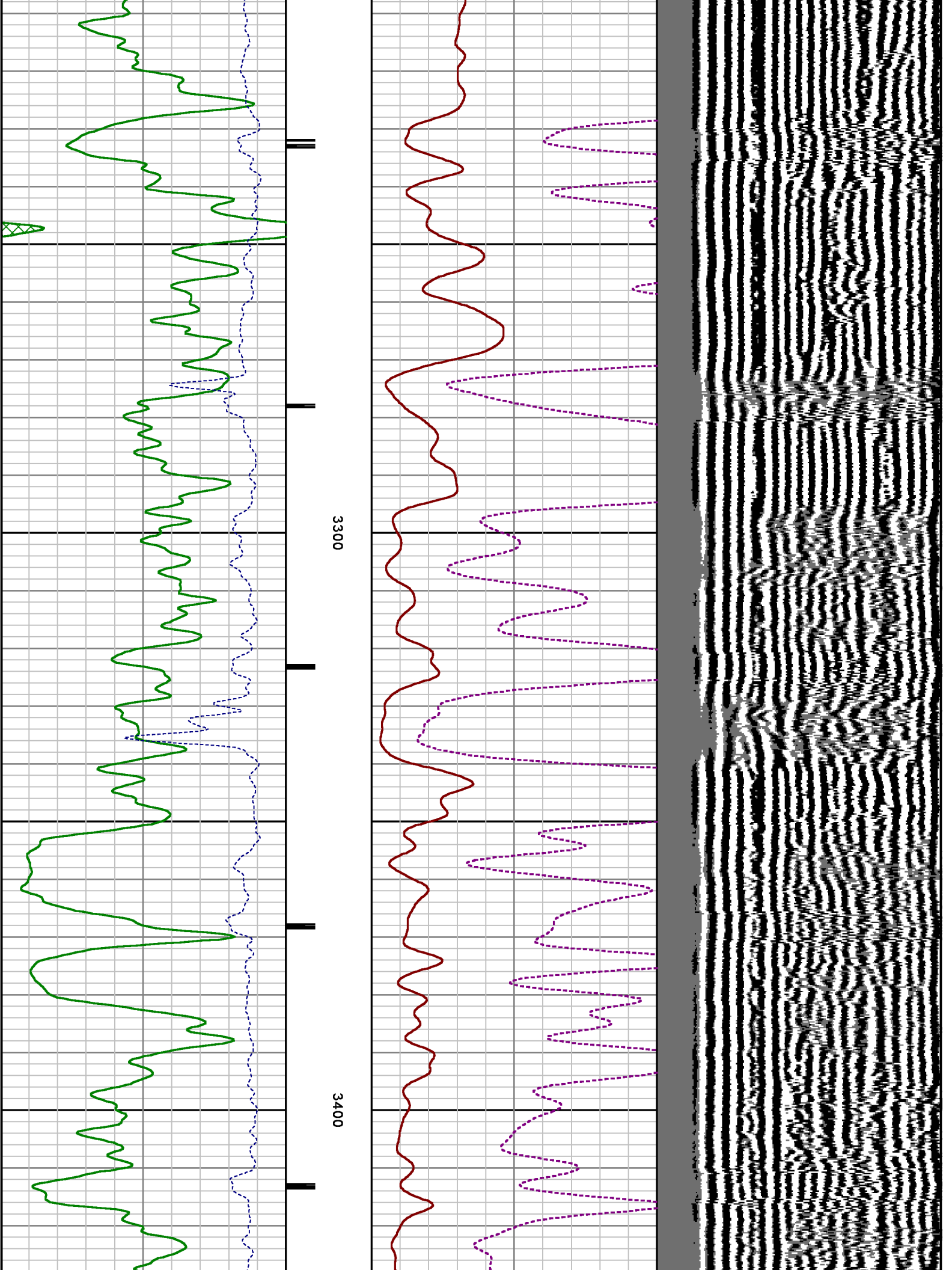


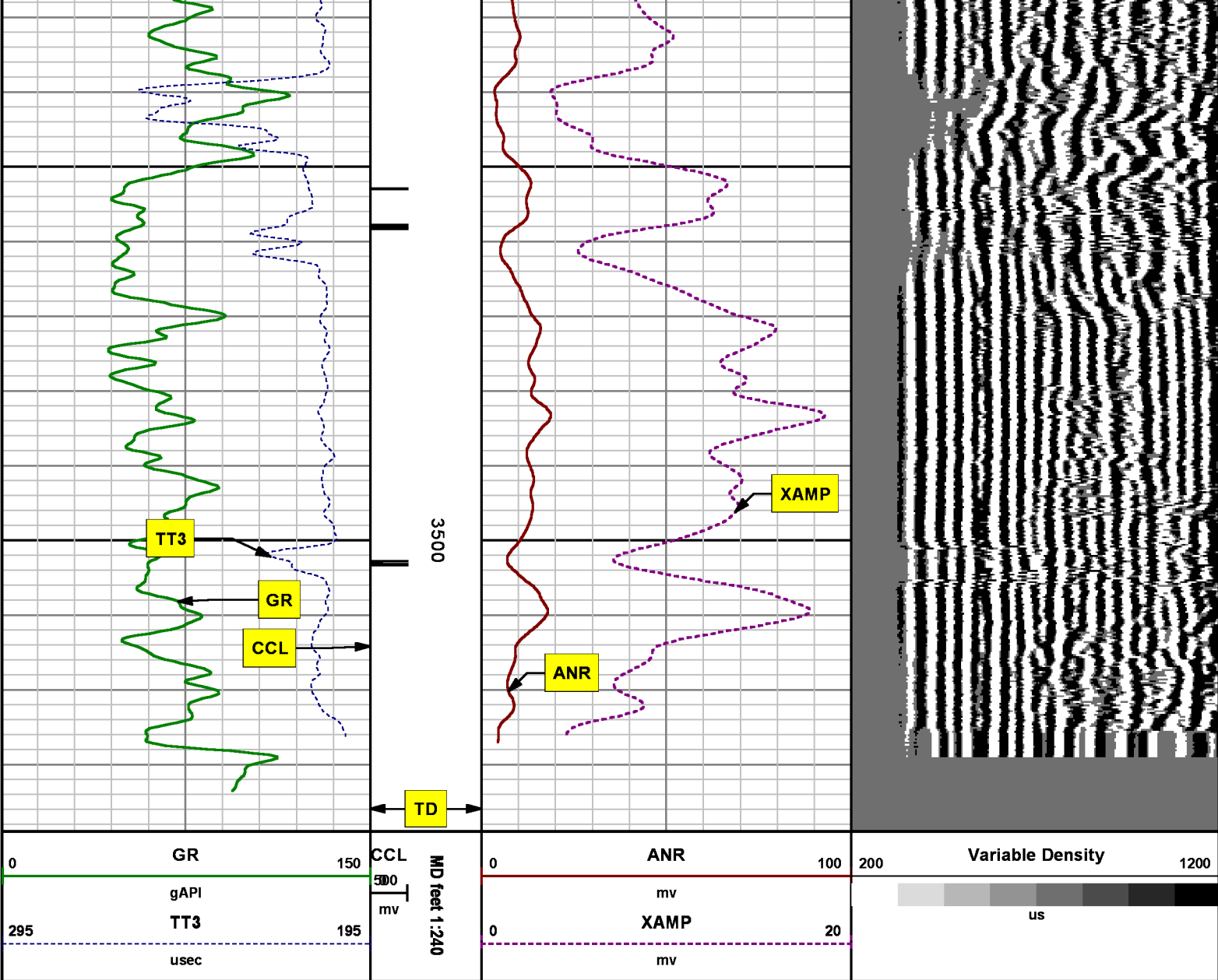












*REPEAT SECTION*  
*0 PSI*

MEASUREMENT TYPE	PARAMETER	VALUE	UNITS	TOP	BOTTOM
RAL	Amp Gate Start Far	325.000	usec	3303.860	3541.860
RAL	Amp Gate Start Near	215.000	usec	3303.860	3541.860
RAL	Amp Gate Start Radial	215.000	usec	3303.860	3541.860

RAL	Amp Gate Width Far	25.000	usec	3303.860	3541.860
RAL	Amp Gate Width Near	25.000	usec	3303.860	3541.860
RAL	Amp Gate Width Radial	25.000	usec	3303.860	3541.860
RAL	casing od	5.500	inches	3303.860	3541.860
RAL	casing wt	17.000	lbm/ft	3303.860	3541.860
RAL	FB Start Far	306.289	usec	3303.860	3541.860
RAL	FB Start Near	189.780	usec	3303.860	3541.860
RAL	FB Start Radial	189.780	usec	3303.860	3541.860
RAL	FB Thresh Far	10.000	mv	3303.860	3541.860
RAL	FB Thresh Near	4.000	mv	3303.860	3541.860
RAL	FB Thresh Radial	4.000	mv	3303.860	3541.860
RAL	Fluid Travel Time	200.000	usec/ft	3303.860	3541.579

## DEPTH OFFSETS

(for Acquired Curves)

SERIES	DEPTH OFFSET	ACQUIRED CURVES							
1426XA	-16.750	ACAL	ANR	AR1	AR2	AR3	AR4		
		AR5	AR6	AR7	AR8	CHV	FPR2		
		FPR3	FPR5	TT3	TTR1	TTR2	TTR3		
		TTR4	TTR5	TTR6	TTR7	TTR8	XAMP		
1426XA	-15.750	AFAR	SIG	TT5					
2459XA	-11.340	CCL							
2459XA	-9.490	GR							
2459XA	-4.090	NEU							

Created by : RAL, v4.8.008

Plotted by : PlotMgr, v5.4.504

Company : SAMSON RESOURCES CO

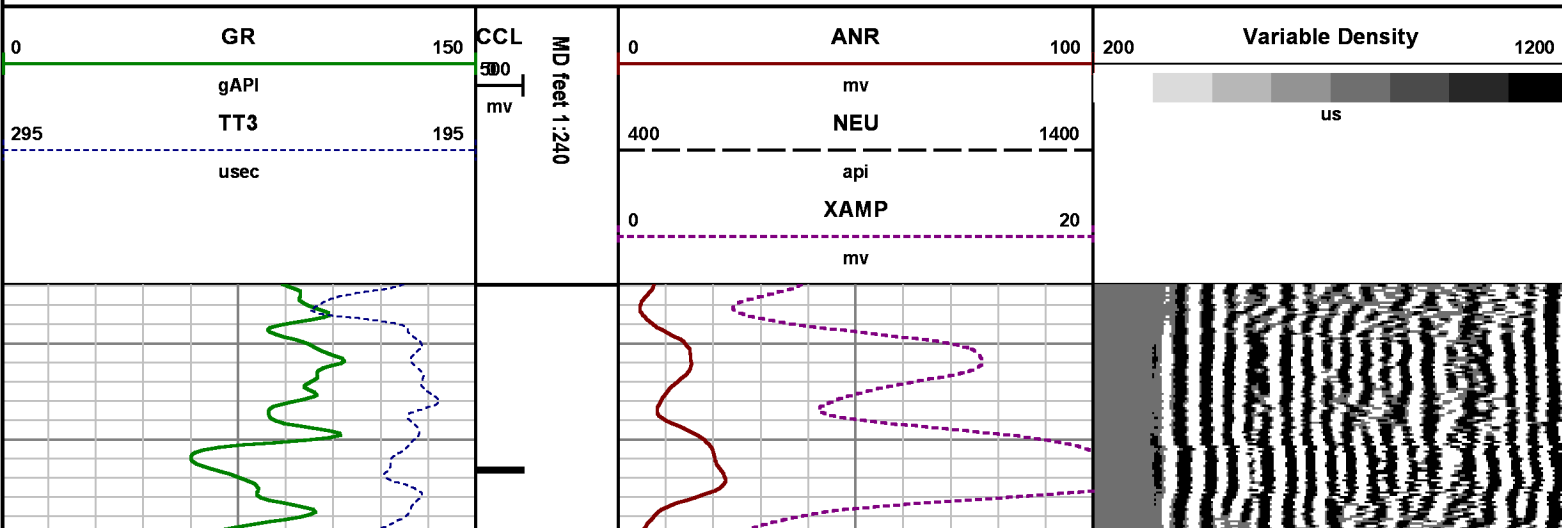
Well : BONINE 34-7-24 #4

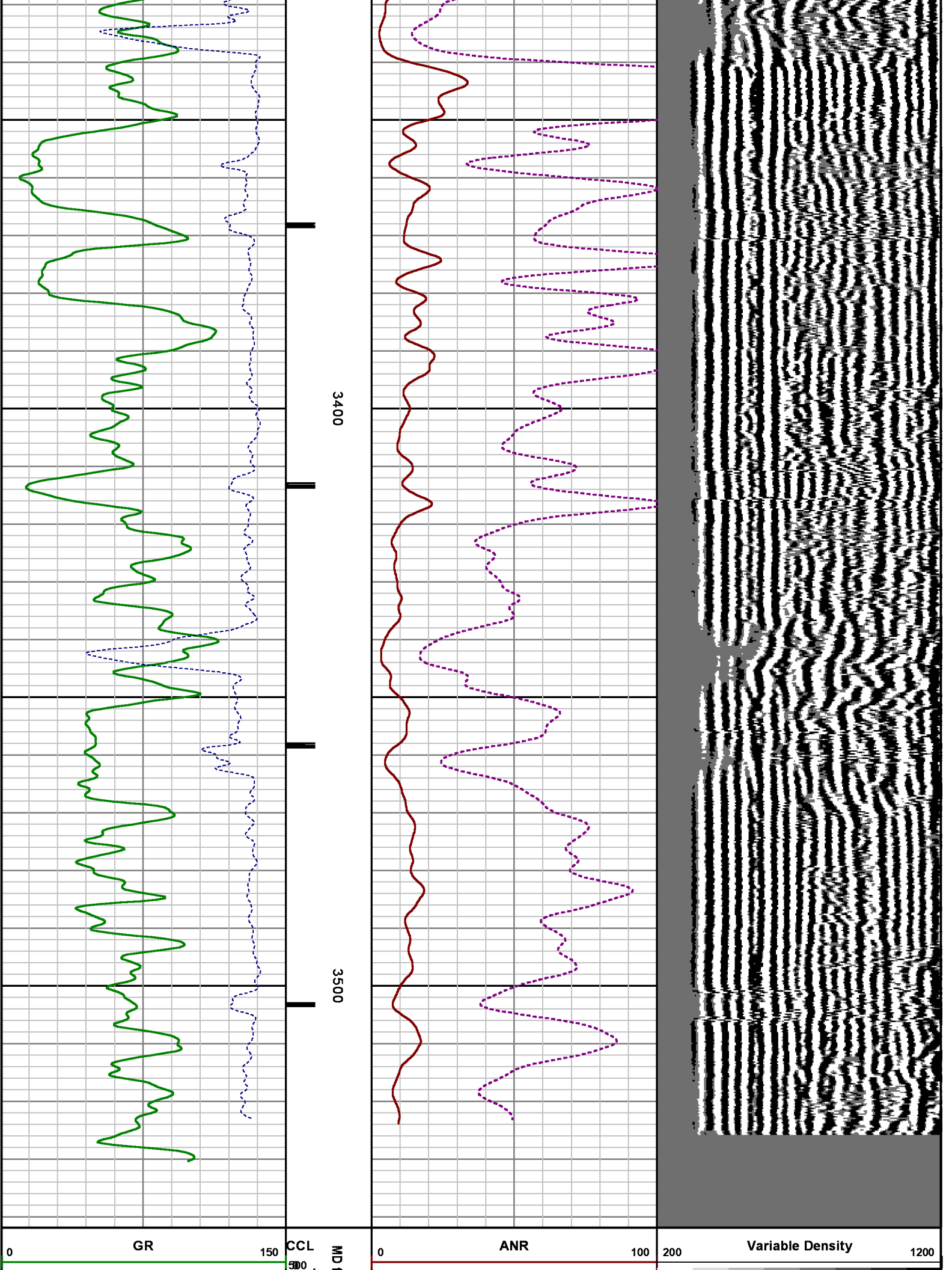
File Name : d:\welldata\samson\34-7-24 #4\4ral\repeat.xtf

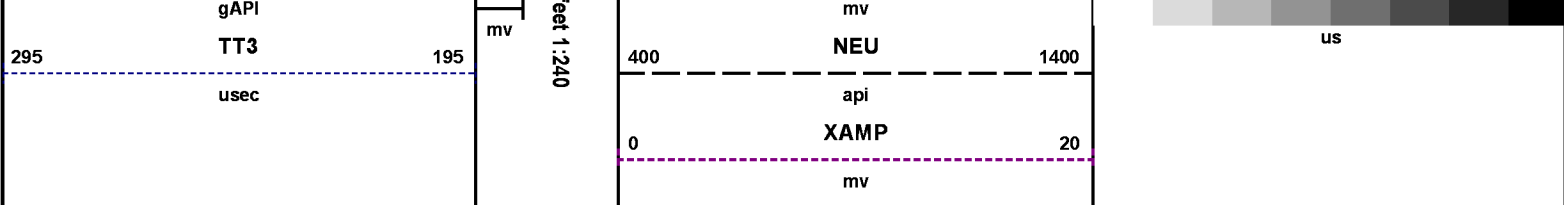
Mode : PlotMgr 5.4.504

Interval : 3303.86 - 3541.86 feet UP

Created : 6/11/2014 2:48:06 PM







## CALIBRATION SUMMARY

*RALSHP*

Shop Calibration: C:\case\calver\RALSHP\496J10\_shp.cal

### SHOP CALIBRATION SUMMARY

DATE/TIME PERFORMED: Tue Jun 10 10:17:32 2014 TOOL SERIES: 1426XA ASSET: 496 SEQ: J10

Tool Delay [usec] -54.00 Tank OD in 5.50 Tank Wt lbm/ft 15.50 Tank ID in 4.95

RECEIVER	Travel Time [usec]	Amp. Gate Start [usec]	Amp. Gate Width [usec]	Zero Gate Start [usec]	Zero Gate Width [usec]	Zero Amp. [mV]	Amp Ref. [mV]	Shop Factor
CAL Pulse	217	216	30	166	25	0.242	100.00	0.32
3 Ft. Receiver	217	216	30	166	25	2.565	100.00	0.32
5 Ft. Receiver	326	325	30	236	25	0.341	150.00	0.36
Radial #1	217	216	30	166	25	1.609	100.00	0.32
Radial #2	216	216	30	166	25	2.218	100.00	0.31
Radial #3	215	216	30	166	25	2.792	100.00	0.32
Radial #4	215	216	30	166	25	2.540	100.00	0.32
Radial #5	216	216	30	166	25	1.622	100.00	0.32
Radial #6	217	216	30	166	25	2.196	100.00	0.32
Radial #7	217	216	30	166	25	2.090	100.00	0.32
Radial #8	219	216	30	166	25	2.486	100.00	0.32

*RALFLD*

Wellsite Calibration: C:\case\calver\RALFLD\496J10 fld.cal

### WELLSITE CALIBRATION SUMMARY

DATE/TIME PERFORMED: Tue Jun 10 10:20:56 2014 TOOL SERIES: 1426XA ASSET: 496 SEQ: J10

Tool Delay [usec] -54.00 Casing OD in 5.50 Casing Wt lbm/ft 17.00 Casing ID in 4.90

RECEIVER	Zero Gate Start [usec]	Zero Gate Width [usec]	Zero Amp. [mV]	Full Amp. [mV]	Wellsite Factor	Amp. Ref [mV]
CAL Pulse	166	25	0.084	0.000	1.00	100.000
3 Ft. Receiver	215	25	1.528			
5 Ft. Receiver	325	25	1.366			
Radial #1	215	25	1.009			
Radial #2	215	25	1.092			
Radial #3	215	25	1.298			
Radial #4	215	25	1.312			
Radial #5	215	25	1.379			
Radial #6	215	25	1.551			
Radial #7	215	25	1.205			
Radial #8	215	25	1.178			

## GAMMA RAY

Calibration File: C:\case\calver\GRV456J1.cal

### CALIBRATION SUMMARY

DATE/TIME PERFORMED: Tue Jun 10 11:37:19 2014 TOOL SERIES: 2459XA ASSET: 456 SEQ: J1

Calibrator #	Background [cps]	Calibrator On [cps]	Multiplicative	Background [api]	Calibrator On [api]	Differential [api]
S2K WA612	93.20	369.51	0.670	62.40	247.40	185.00

Verification File: C:\case\calver\GRV456J1.VP

### PRIMARY LOG VERIFICATION

DATE/TIME PERFORMED: Tue Jun 10 11:38:30 2014 TOOL SERIES: 2459XA ASSET: 456 SEQ: J1

Calibrator #	Background [cps]	Calibrator On [cps]	Multiplicative	Background [api]	Calibrator On [api]	Differential [api]
S2K WA612	101.16	371.24	0.670	67.73	248.56	180.83

## TOOL DIAGRAM

OTA SHORT CABLE HEAD

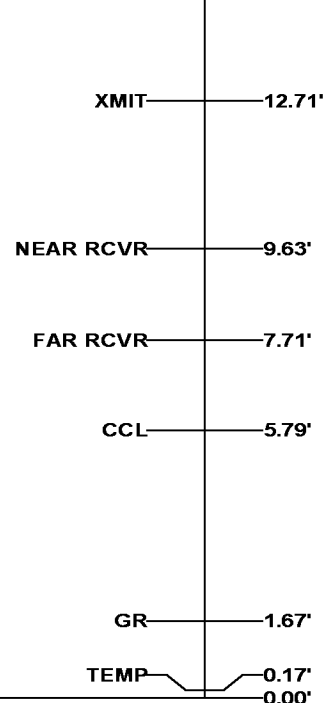
PROBE 2 3/4 DUAL RECEIVER RADII





18.89'

Series	1426XA
Mnemonic	PROB
Diameter	2.75"
Length	11.17'
Measure Point	0.75' FAR RCVR
Measure Point	2.67' NEAR RCVR
Measure Point	5.75' XMIT
Temp Rating	350.00 °F
Press Rating	18000.00 PSI

RAL GR/TEMP/CCL/CHV DETECTOR	
Series	1355XA
Mnemonic	RAL
Diameter	2.75"
Weight	85.00 lb
Length	6.96'
Measure Point	0.17' TEMP
Measure Point	1.67' GR
Measure Point	5.79' CCL
Temp Rating	400.00 °F
Press Rating	20000.00 PSI



**Total Length: 18.89'**  
**Total Weight: Not Available**  
**Max Diameter: 0' 2.75"**

<div></div> <div><b>BAKER HUGHES</b></div>	<b>Company</b>	SAMSON RESOURCES CO				<b>File No:</b>	CH085068	
	<b>Well</b>	BONINE 34-7-24 #4						
	<b>Field</b>	IGNACIO BLANCO				<b>API No:</b>	05067097920000	
	<b>County</b>	LA PLATA	<b>State</b>	COLORADO				
<div>Baker Atlas</div> <div></div>	<b>Location</b>					<b>Elevations</b>		
	LAT: 37.03581					<b>KB</b>	6464.8 ft	LEASE# 039805
	LONG: -107.59350000					<b>DF</b>		
	SHL: 1120' FNL & 1929' FEL					<b>GL</b>	6452.8 ft	
	<b>SEC</b> 10	<b>TWP</b> 32N	<b>RGE</b> 7W					