



NABORS

**COMPLETION
& PRODUCTION
SERVICES CO.**

**MICRO
LOG**

Company		MULL DRILLING COMPANY, INC.	
Well	NWAU #38		
Field	ARAPAHOE		
County	CHEYENNE	State	COLORADO
Location:	API # : 05-017-07799-00 2070' FSL & 659' FWL NW/4 - SW/4 SEC 25 TWP 13S RGE 43W		Other Services CDL/CNL/PE DIL/SONIC
Permanent Datum	GROUND LEVEL	Elevation	3988
Log Measured From	KELLY BUSHING 11' A.G.L.		
Drilling Measured From	KELLY BUSHING		
Date	11/3/14		
Run Number	TWO		
Depth Driller	5400		
Depth Logger	5402		
Bottom Logged Interval	4386		
Top Log Interval	4000		
Casing Driller	8 5/8"@518'		
Casing Logger	518		
Bit Size	7 7/8"		
Type Fluid in Hole	CHEMICAL MUD	CHLORIDES 600 PPM	
Density / Viscosity	9.3/62		
pH / Fluid Loss	9.0/7.2		
Source of Sample	FLOWLINE		
Rin @ Meas. Temp	2.00@60F		
Rinf @ Meas. Temp	1.50@60F		
Rinc @ Meas. Temp	2.40@60F		
Source of Rinf / Rinc	MEASUREMENT		
Rin @ BHT	.930@129F		
Time Circulation Stopped	5.5 HOURS		
Time Logger on Bottom	6:00 P.M.		
Maximum Recorded Temperature	129F		
Equipment Number	4854		
Location	HAYS, KANSAS		
Recorded By	JEFF LUEBBERS		
Witnessed By	GREG CONDREN		

<<< Fold Here >>>

All interpretations are opinions based on inferences from electrical or other measurements and we cannot and do not guarantee the accuracy or correctness of any interpretation, and we shall not, except in the case of gross or willful negligence on our part, be liable or responsible for any loss, costs, damages, or expenses incurred or sustained by anyone resulting from any interpretation made by any of our officers, agents or employees. These interpretations are also subject to our general terms and conditions set out in our current Price Schedule.

Comments

THANK YOU FOR USING "NABORS" HAYS, KANSAS (785) 628-6395
DIRECTIONS

ARAPAHOE, CO. & OLD 40 HWY, N. ON MICHIGAN AVE. TO DEAD END, 1/2W. TO "RD. 53", 2 1/4N., E. IN



NABORS
COMPLETION
& PRODUCTION

MAIN SECTION

Database File:

25907pe.db

Dataset Pathname:

pass7.1

Presentation Format:

micro

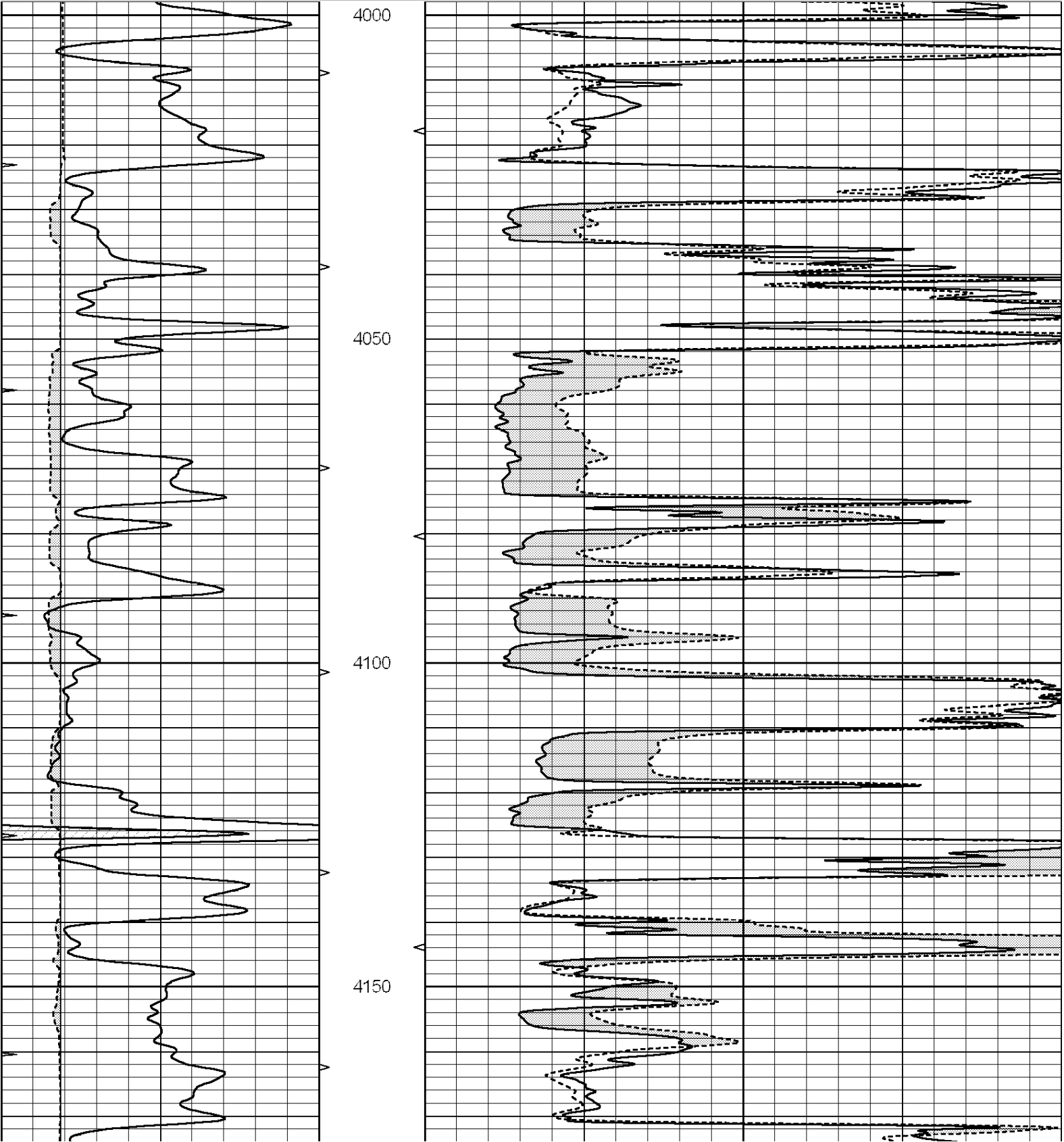
Dataset Creation:

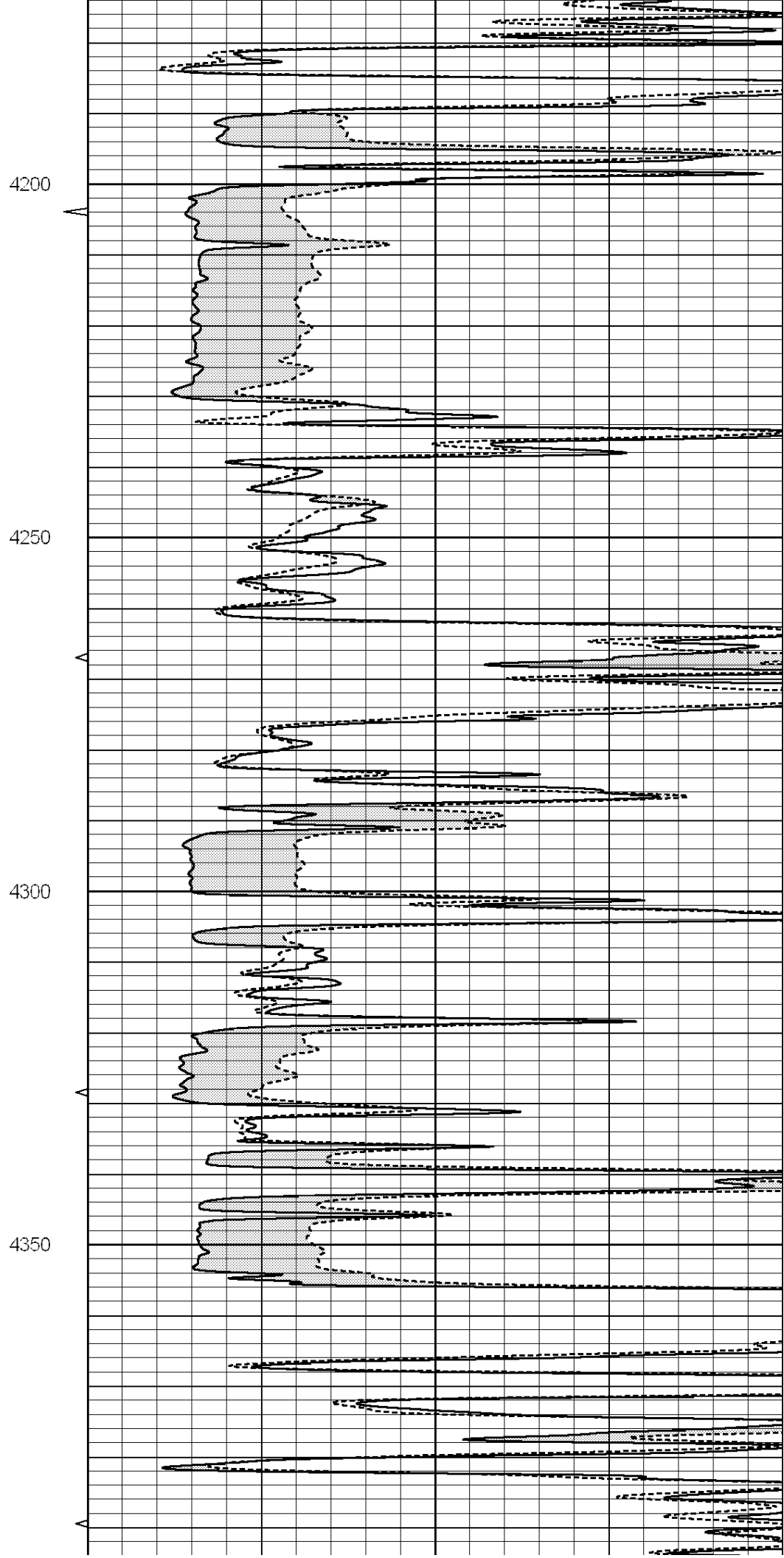
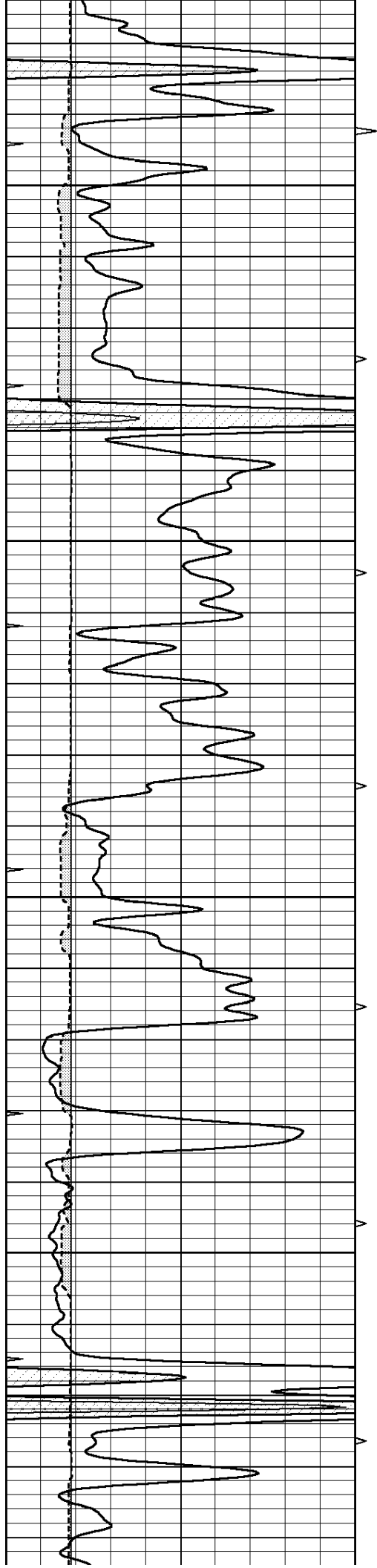
Mon Nov 03 23:00:59 2014 by Calc SOC 120430

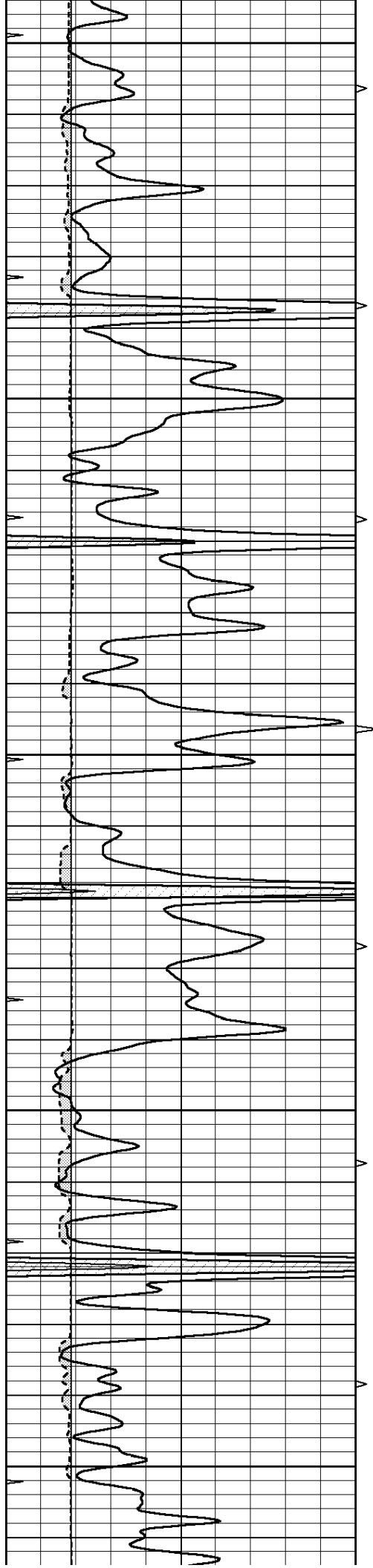
Charted by:

Depth in Feet scaled 1:240

0	GAMMA RAY (GAPI)	150	ABHV	0	MEL1.5 (Ohm-m)	40
6	CALIPER (in)	16	10 (ft3)	0 0	MEL 20 (Ohm-m)	40
0	MINMK	20	TBHV			
			0 (ft3)	10		







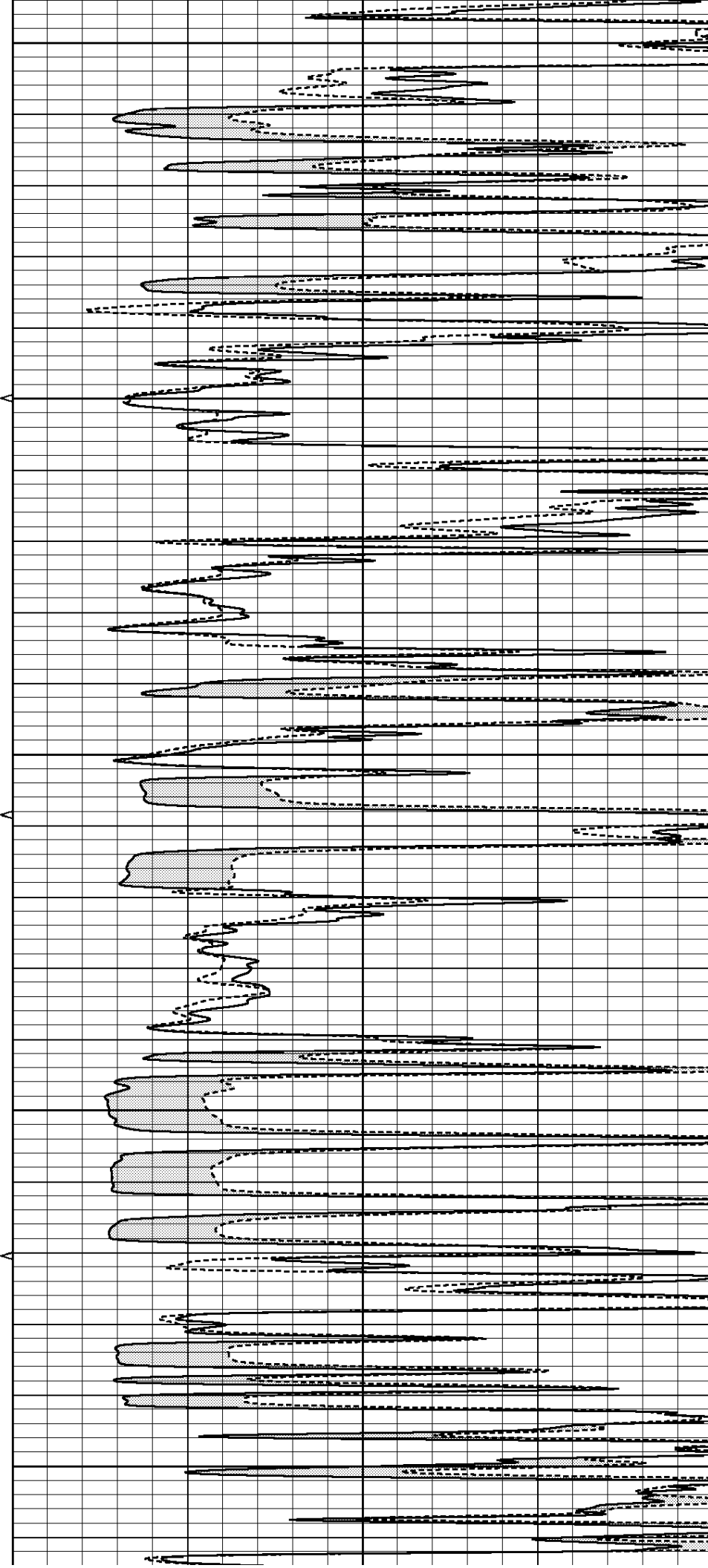
4400

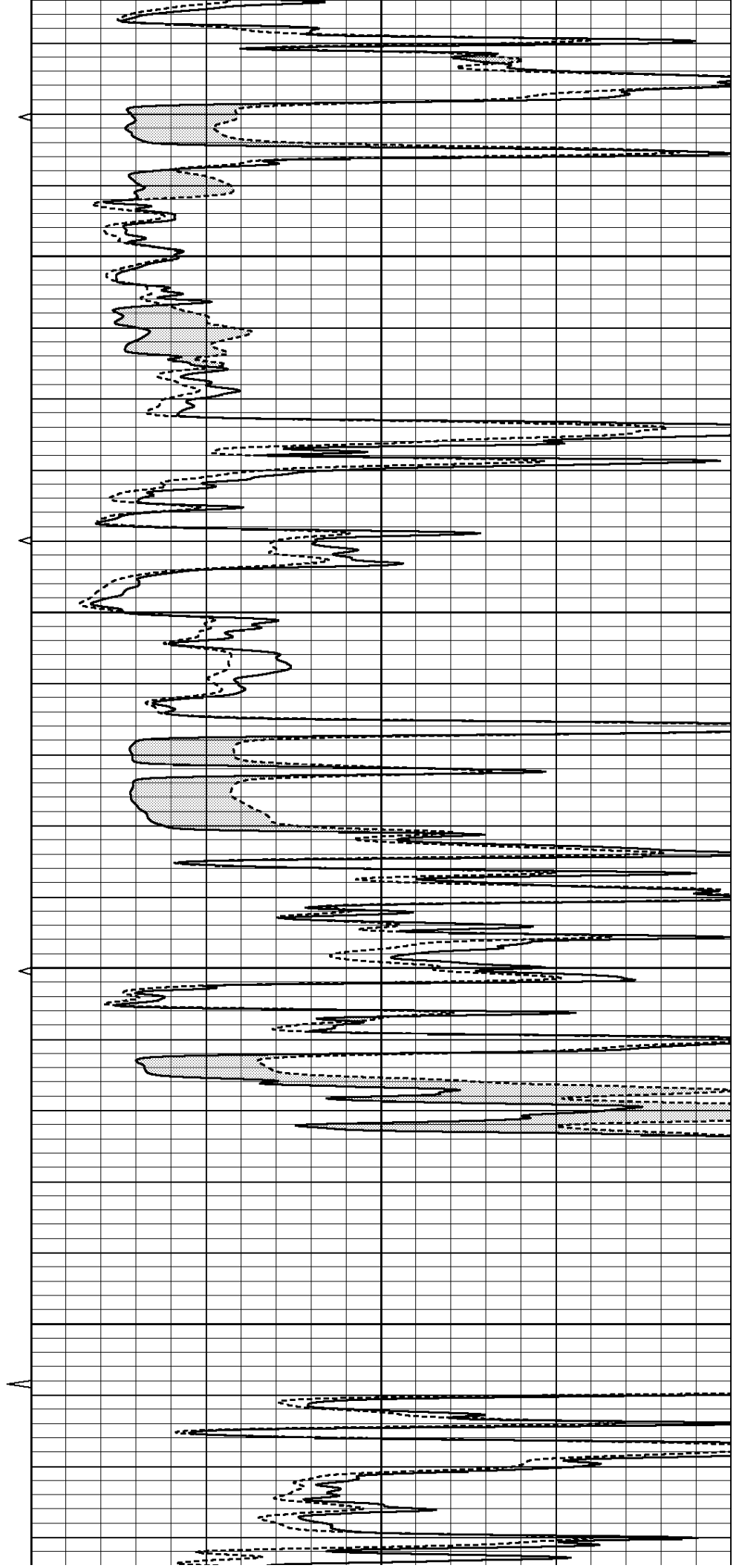
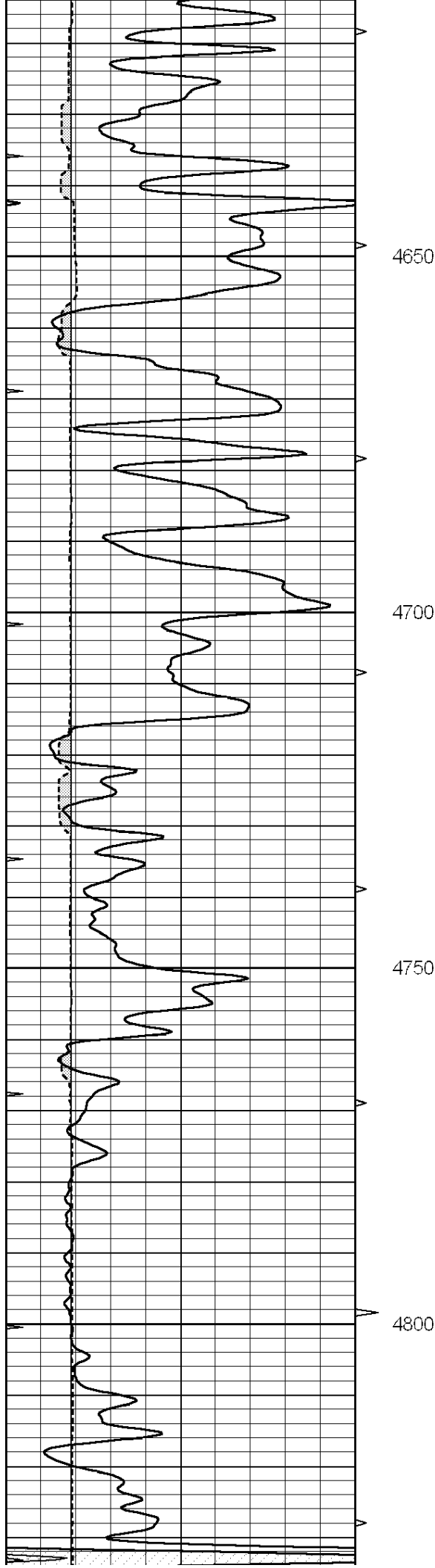
4450

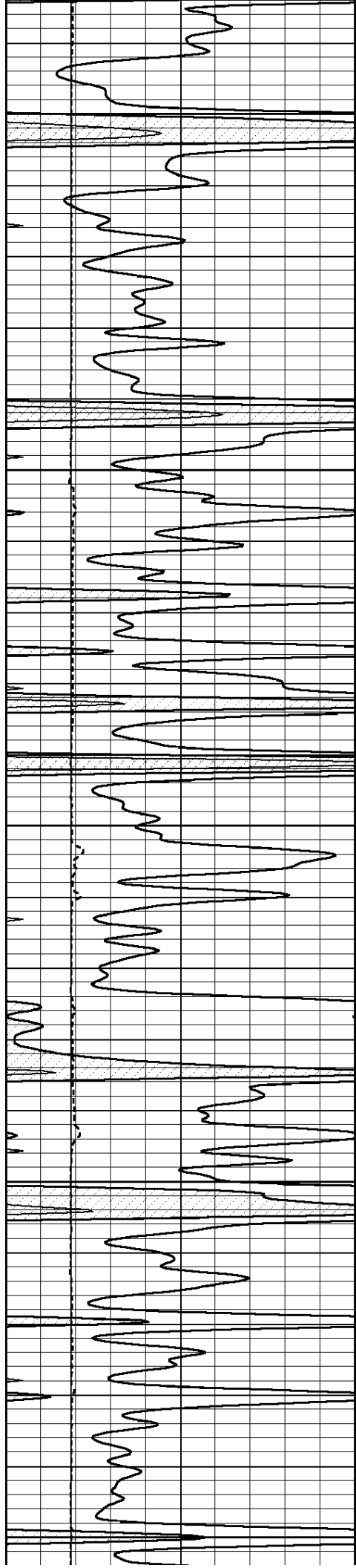
4500

4550

4600







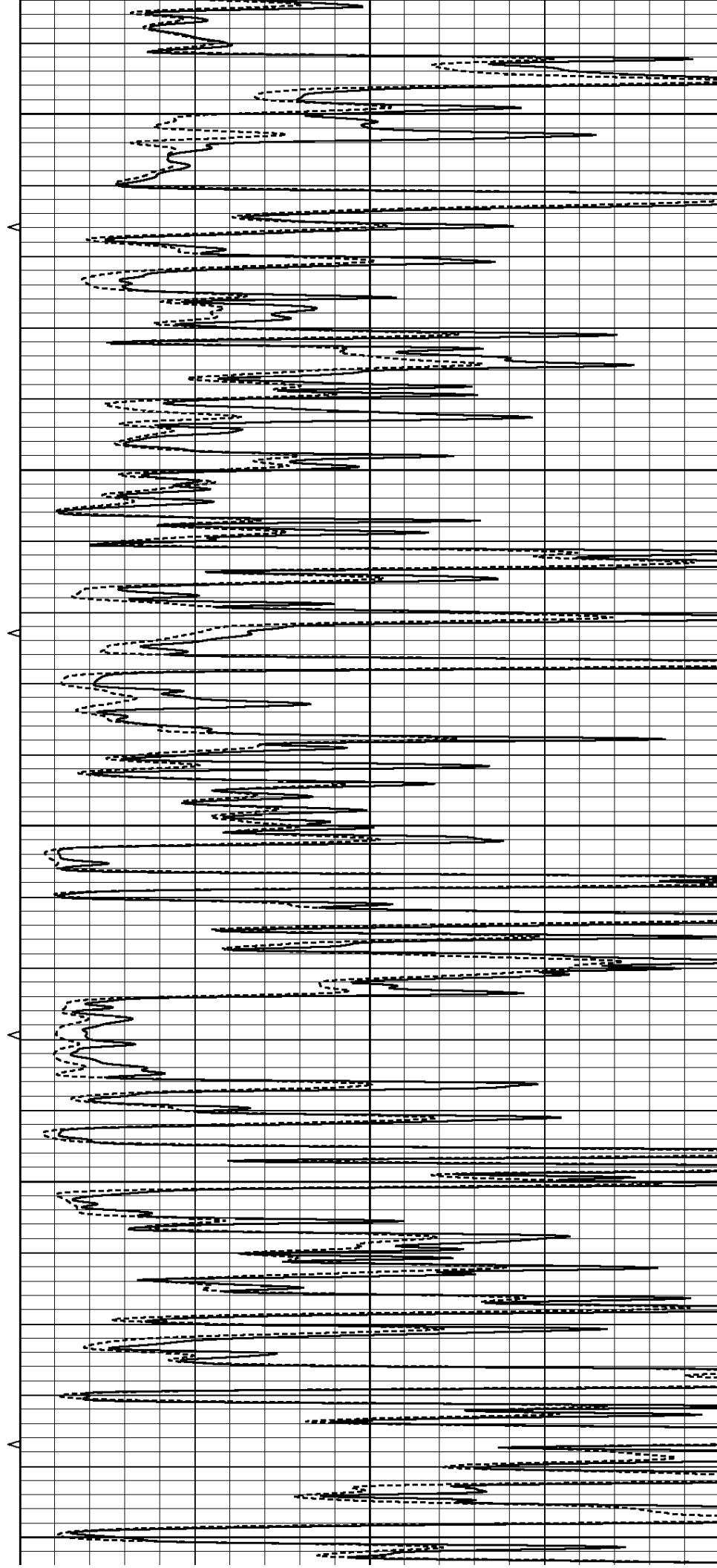
4850

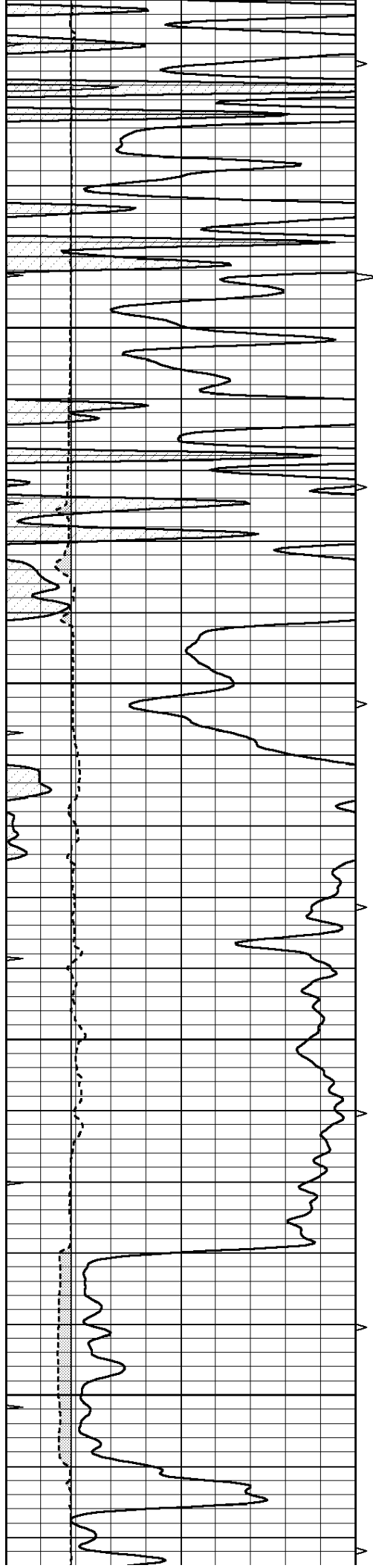
4900

4950

5000

5050



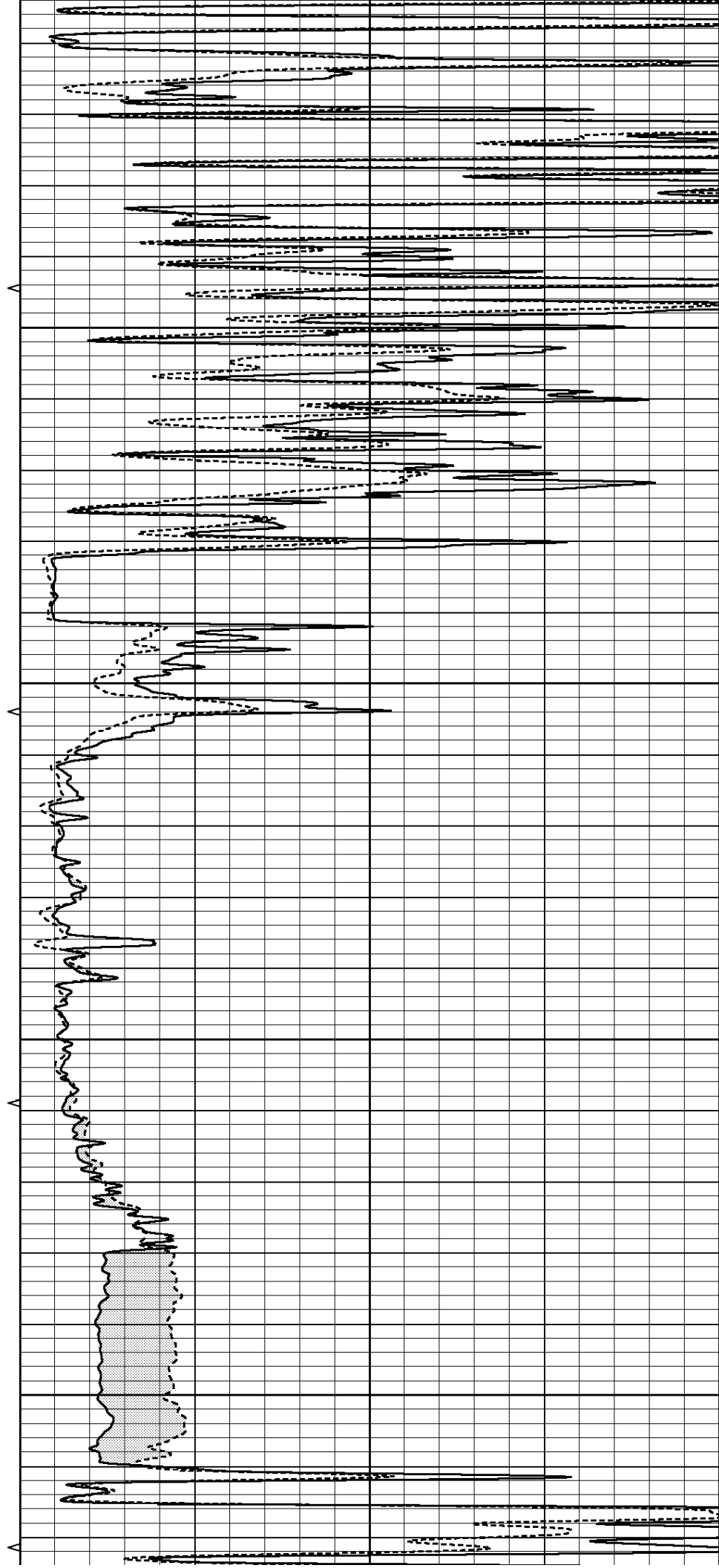


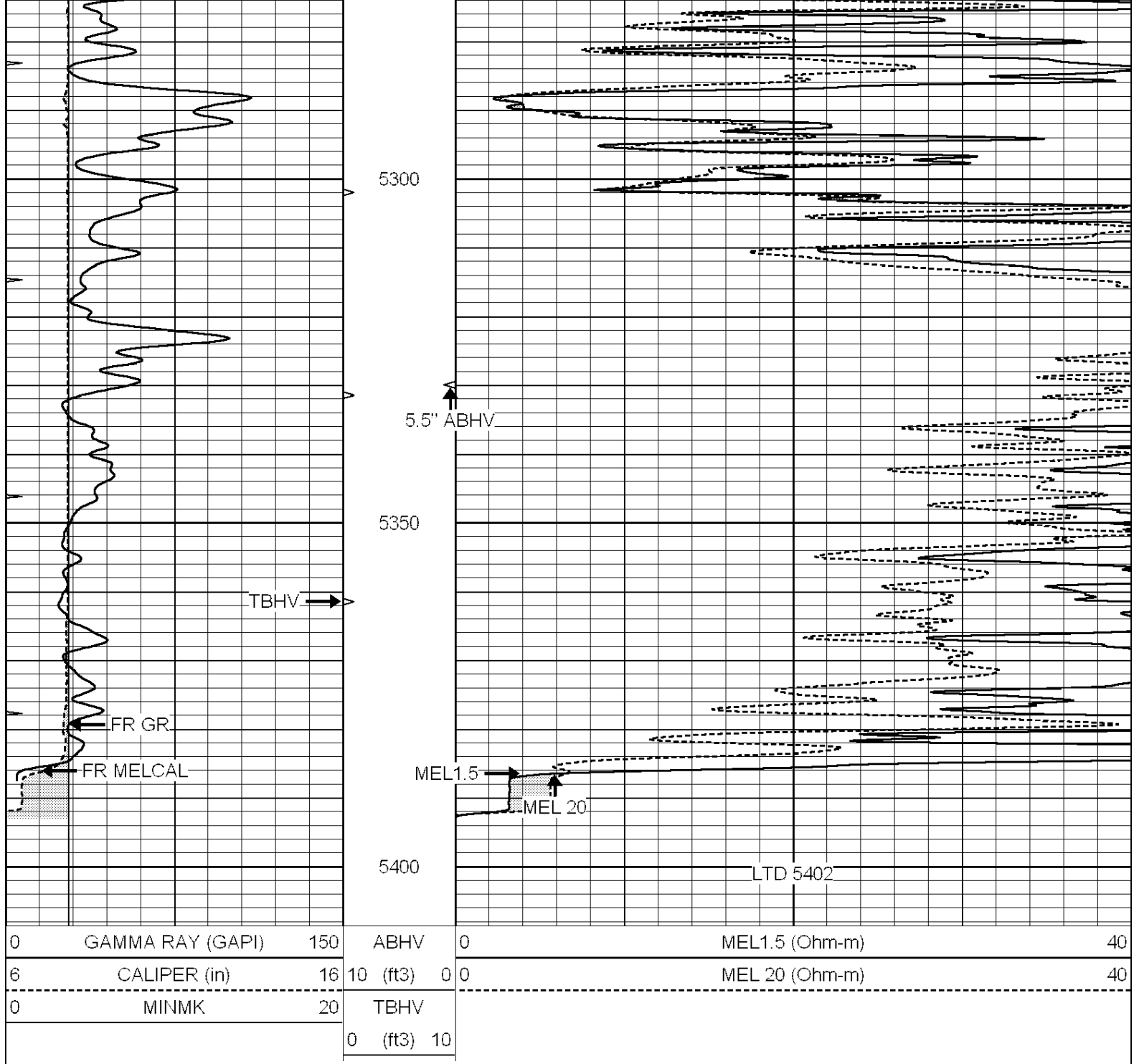
5100

5150

5200

5250





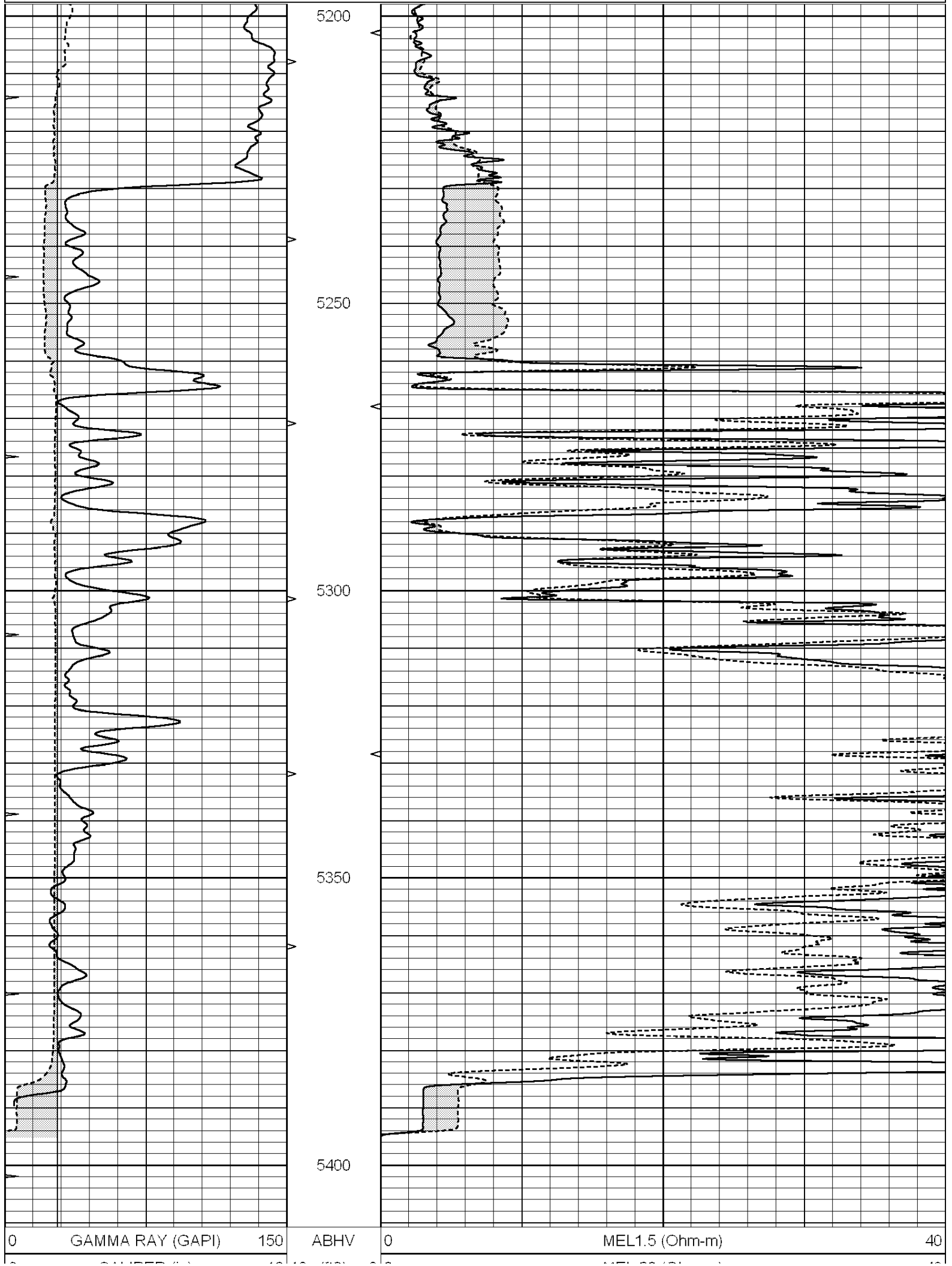
NABORS

**COMPLETION
& PRODUCTION
SERVICES CO.**

REPEAT SECTION

Database File: 25907pe.db
 Dataset Pathname: pass6.1
 Presentation Format: micro
 Dataset Creation: Mon Nov 03 22:13:30 2014 by Calc SOC 120430
 Charted by: Depth in Feet scaled 1:240

0	GAMMA RAY (GAPI)	150	ABHV	0	MEL1.5 (Ohm-m)	40
6	CALIPER (in)	16	10 (ft3)	0 0	MEL 20 (Ohm-m)	40
0	MINMK	20	TBHV			
			0 (ft3)	10		



6	CALIPER (in)	16	10 (ft3)	0 0	MEL 20 (Ohm-m)	40
0	MINMK	20	TBHV			
			0 (ft3)	10		

Calibration Report			
Database File:	25907pe.db		
Dataset Pathname:	pass7.1		
Dataset Creation:	Mon Nov 03 23:00:59 2014 by Calc SOC 120430		
MICRO Calibration Report			
Serial Number:	070910		
Tool Model:	ProbeN		
Performed:	Fri Oct 31 07:44:46 2014		
Caliper Calibration:	Gain=4.033	Offset=1.842	
	Low Cal	High Cal	
References	8.100	15.000	
Readings	1.552	3.263	
1.5" Calibration:	Gain=22.000	Offset=0.000	
	Low Cal	High Cal	
References	0.000	20.000	
Readings	0.000	1.216	
2" Calibration:	Gain=50.000	Offset=-1.500	
	Low Cal	High Cal	
References	0.000	20.000	
Readings	0.002	1.053	
Gamma Ray Calibration Report			
Serial Number:	070559		
Tool Model:	OPEN_GR		
Performed:	Fri Oct 31 07:44:44 2014		
Calibrator Value:	1.0	GAPI	
Background Reading:	0.0	cps	
Calibrator Reading:	1.0	cps	
Sensitivity:	0.2000	GAPI/cps	