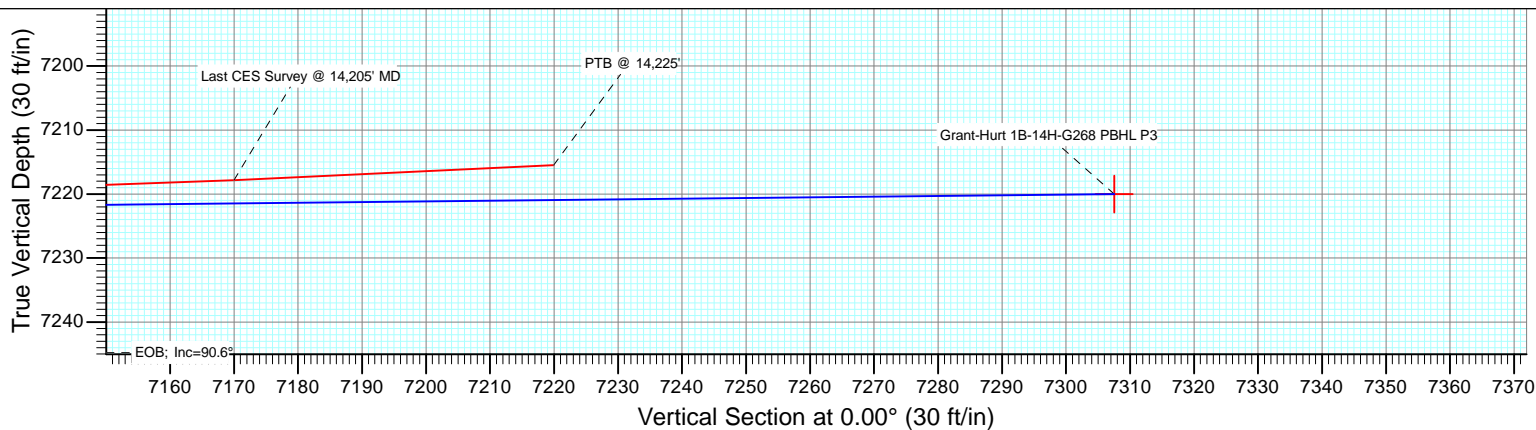
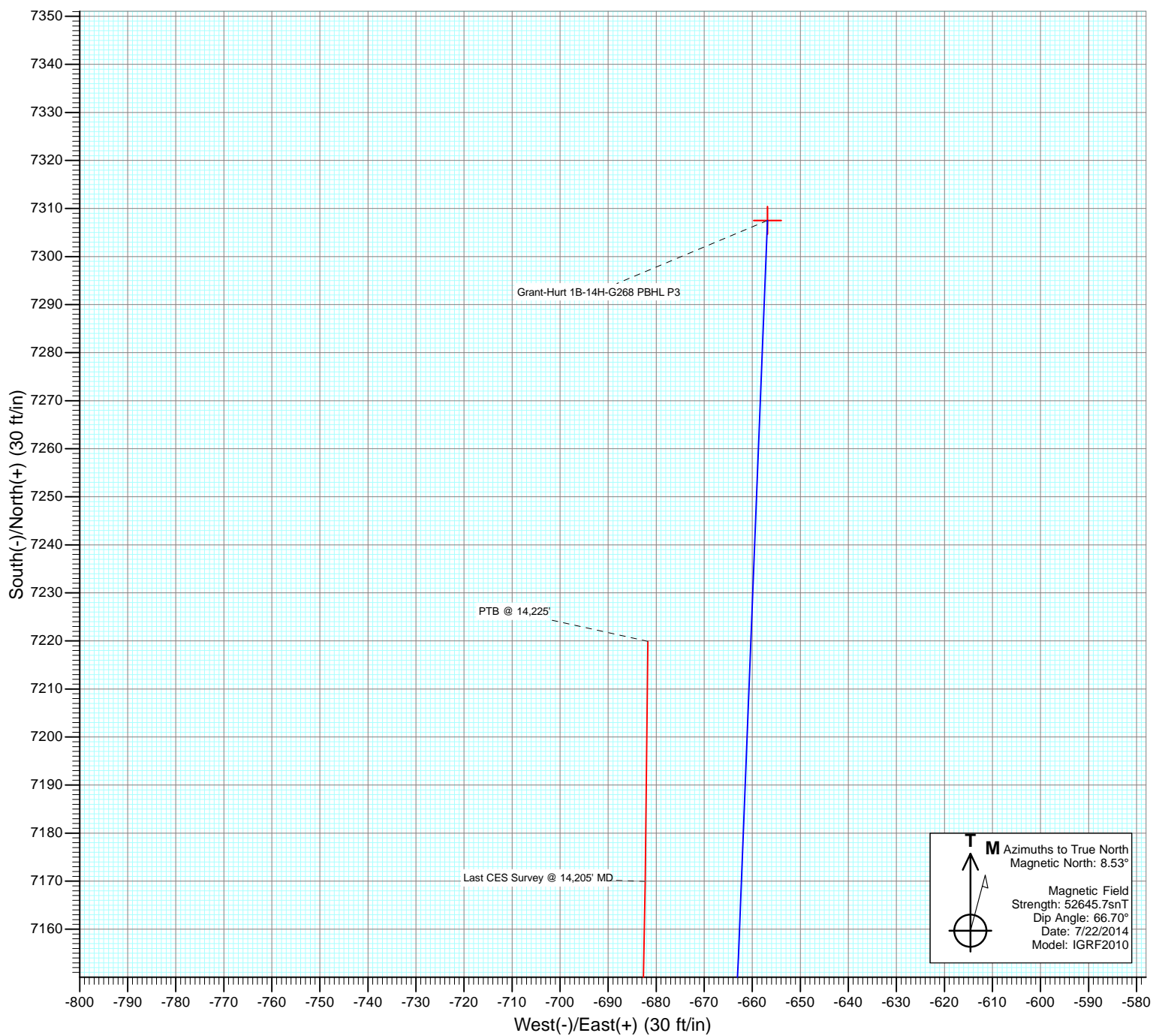




Project: DJ Wattenberg
Site: S14-T2N-R68W (Grant Elmquist/Salisbury/Hurt)
Well: Grant-Hurt 1B-14H-G268
Wellbore: Hz
Design: FINAL



Cathedral Energy Services

Survey Report

| | | | |
|------------------|--|-------------------------------------|------------------------------|
| Company: | EnCana Oil & Gas (USA) Inc | Local Co-ordinate Reference: | Well Grant-Hurt 1B-14H-G268 |
| Project: | DJ Wattenberg | TVD Reference: | 32' KB @ 4920.0ft (PATT 326) |
| Site: | S14-T2N-R68W (Grant Elmquist/Salisbury/Hurt) | MD Reference: | 32' KB @ 4920.0ft (PATT 326) |
| Well: | Grant-Hurt 1B-14H-G268 | North Reference: | True |
| Wellbore: | Hz | Survey Calculation Method: | Minimum Curvature |
| Design: | FINAL | Database: | USA EDM 5000 Multi Users DB |

| | | | |
|--------------------|---------------------------|----------------------|----------------|
| Project | DJ Wattenberg | | |
| Map System: | US State Plane 1983 | System Datum: | Mean Sea Level |
| Geo Datum: | North American Datum 1983 | | |
| Map Zone: | Colorado Northern Zone | | |

| Site | | S14-T2N-R68W (Grant Elmquist/Salisbury/Hurt) | | | |
|-----------------------|----------|--|-----------------|-------------------|-------------|
| Site Position: | | Northing: | 1,295,686.81 ft | Latitude: | 40.143850 |
| From: | Lat/Long | Easting: | 3,147,060.98 ft | Longitude: | -104.973980 |
| Position Uncertainty: | 0.0 ft | Slot Radius: | 13.200 in | Grid Convergence: | 0.34 ° |

| | | | | | | |
|----------------------|------------------------|--------|---------------------|-----------------|---------------|-------------|
| Well | Grant-Hurt 1B-14H-G268 | | | | | |
| Well Position | +N/-S | 0.0 ft | Northing: | 1,294,034.21 ft | Latitude: | 40.139280 |
| | +E/-W | 0.0 ft | Easting: | 3,149,106.18 ft | Longitude: | -104.966700 |
| Position Uncertainty | | 0.0 ft | Wellhead Elevation: | ft | Ground Level: | 4,888.0 ft |

| | | | | | |
|------------------|-------------------|--------------------|------------------------|----------------------|----------------------------|
| Wellbore | Hz | | | | |
| Magnetics | Model Name | Sample Date | Declination (°) | Dip Angle (°) | Field Strength (nT) |
| | IGRF2010 | 7/22/2014 | 8.53 | 66.70 | 52,646 |

| | | | | | |
|--------------------------|-------------------------|---------------|--------------|----------------------|-----|
| Design | FINAL | | | | |
| Audit Notes: | | | | | |
| Version: | 1.0 | Phase: | ACTUAL | Tie On Depth: | 0.0 |
| Vertical Section: | Depth From (TVD) | +N/-S | +E/-W | Direction | |
| | (ft) | (ft) | (ft) | (°) | |
| | 0.0 | 0.0 | 0.0 | 0.00 | |

| | | | | | |
|-----------------------|----------------|--------------------------|------------------|--------------------|--|
| Survey Program | Date | 8/7/2014 | | | |
| From (ft) | To (ft) | Survey (Wellbore) | Tool Name | Description | |
| 146.0 | 14,255.0 | Survey #1 (Hz) | Geolink MWD | Geolink MWD | |

| | | | | | | | | | | |
|----------------------------|------------------------|--------------------|----------------------------|-------------------|-------------------|------------------------------|------------------------------|-----------------------------|------------------------------|--|
| Survey | | | | | | | | | | |
| Measured Depth (ft) | Inclination (°) | Azimuth (°) | Vertical Depth (ft) | +N/-S (ft) | +E/-W (ft) | Vertical Section (ft) | Dogleg Rate (°/100ft) | Build Rate (°/100ft) | Formations / Comments | |
| 0.0 | 0.00 | 0.00 | 0.0 | 0.0 | 0.0 | 0.0 | 0.00 | 0.00 | | |
| 146.0 | 0.30 | 6.90 | 146.0 | 0.4 | 0.0 | 0.4 | 0.21 | 0.21 | | |
| 241.0 | 0.80 | 318.20 | 241.0 | 1.1 | -0.4 | 1.1 | 0.68 | 0.53 | | |
| 335.0 | 1.50 | 315.70 | 335.0 | 2.5 | -1.7 | 2.5 | 0.75 | 0.74 | | |
| 430.0 | 1.50 | 305.70 | 429.9 | 4.1 | -3.5 | 4.1 | 0.28 | 0.00 | | |
| 525.0 | 1.80 | 258.60 | 524.9 | 4.5 | -6.0 | 4.5 | 1.42 | 0.32 | | |
| 620.0 | 3.60 | 242.90 | 619.8 | 2.9 | -10.1 | 2.9 | 2.03 | 1.89 | | |
| 714.0 | 5.10 | 240.90 | 713.5 | -0.5 | -16.4 | -0.5 | 1.60 | 1.60 | | |
| 809.0 | 5.40 | 240.60 | 808.1 | -4.7 | -24.0 | -4.7 | 0.32 | 0.32 | | |
| 840.0 | 5.50 | 241.40 | 839.0 | -6.2 | -26.6 | -6.2 | 0.41 | 0.32 | | |
| 911.0 | 6.10 | 244.30 | 909.6 | -9.4 | -33.0 | -9.4 | 0.94 | 0.85 | | |
| 1,003.0 | 6.60 | 262.40 | 1,001.1 | -12.3 | -42.6 | -12.3 | 2.23 | 0.54 | | |
| 1,094.0 | 7.00 | 268.90 | 1,091.4 | -13.1 | -53.3 | -13.1 | 0.95 | 0.44 | | |

Cathedral Energy Services

Survey Report

| | | | |
|------------------|--|-------------------------------------|------------------------------|
| Company: | EnCana Oil & Gas (USA) Inc | Local Co-ordinate Reference: | Well Grant-Hurt 1B-14H-G268 |
| Project: | DJ Wattenberg | TVD Reference: | 32' KB @ 4920.0ft (PATT 326) |
| Site: | S14-T2N-R68W (Grant Elmquist/Salisbury/Hurt) | MD Reference: | 32' KB @ 4920.0ft (PATT 326) |
| Well: | Grant-Hurt 1B-14H-G268 | North Reference: | True |
| Wellbore: | Hz | Survey Calculation Method: | Minimum Curvature |
| Design: | FINAL | Database: | USA EDM 5000 Multi Users DB |

Survey

| Measured Depth (ft) | Inclination (°) | Azimuth (°) | Vertical Depth (ft) | +N/-S (ft) | +E/-W (ft) | Vertical Section (ft) | Dogleg Rate (°/100ft) | Build Rate (°/100ft) | Formations / Comments |
|---------------------|-----------------|-------------|---------------------|------------|------------|-----------------------|-----------------------|----------------------|-----------------------|
| 1,186.0 | 6.70 | 268.80 | 1,182.8 | -13.3 | -64.3 | -13.3 | 0.33 | -0.33 | |
| 1,278.0 | 7.80 | 256.60 | 1,274.0 | -14.8 | -75.7 | -14.8 | 2.05 | 1.20 | |
| 1,371.0 | 7.50 | 252.40 | 1,366.2 | -18.1 | -87.7 | -18.1 | 0.68 | -0.32 | |
| 1,463.0 | 7.20 | 250.90 | 1,457.5 | -21.8 | -98.8 | -21.8 | 0.39 | -0.33 | |
| 1,555.0 | 7.10 | 248.60 | 1,548.7 | -25.8 | -109.6 | -25.8 | 0.33 | -0.11 | |
| 1,647.0 | 6.60 | 246.60 | 1,640.1 | -30.0 | -119.7 | -30.0 | 0.60 | -0.54 | |
| 1,739.0 | 7.10 | 260.70 | 1,731.4 | -33.0 | -130.2 | -33.0 | 1.90 | 0.54 | |
| 1,832.0 | 6.90 | 259.70 | 1,823.7 | -34.9 | -141.4 | -34.9 | 0.25 | -0.22 | |
| 1,925.0 | 7.00 | 254.10 | 1,916.1 | -37.5 | -152.3 | -37.5 | 0.74 | 0.11 | |
| 2,016.0 | 6.90 | 248.40 | 2,006.4 | -41.0 | -162.7 | -41.0 | 0.77 | -0.11 | |
| 2,108.0 | 6.50 | 247.30 | 2,097.8 | -45.0 | -172.7 | -45.0 | 0.46 | -0.43 | |
| 2,200.0 | 7.50 | 262.20 | 2,189.1 | -47.9 | -183.4 | -47.9 | 2.24 | 1.09 | |
| 2,292.0 | 7.30 | 255.40 | 2,280.3 | -50.2 | -195.0 | -50.2 | 0.98 | -0.22 | |
| 2,384.0 | 7.10 | 255.20 | 2,371.6 | -53.1 | -206.2 | -53.1 | 0.22 | -0.22 | |
| 2,476.0 | 6.80 | 252.80 | 2,462.9 | -56.1 | -216.9 | -56.1 | 0.45 | -0.33 | |
| 2,568.0 | 6.60 | 247.90 | 2,554.3 | -59.7 | -227.0 | -59.7 | 0.66 | -0.22 | |
| 2,658.0 | 6.90 | 262.20 | 2,643.7 | -62.4 | -237.1 | -62.4 | 1.89 | 0.33 | |
| 2,750.0 | 6.70 | 256.00 | 2,735.0 | -64.5 | -247.8 | -64.5 | 0.83 | -0.22 | |
| 2,842.0 | 7.30 | 267.60 | 2,826.4 | -66.0 | -258.9 | -66.0 | 1.67 | 0.65 | |
| 2,935.0 | 6.90 | 267.30 | 2,918.6 | -66.5 | -270.3 | -66.5 | 0.43 | -0.43 | |
| 3,028.0 | 6.90 | 267.60 | 3,011.0 | -67.0 | -281.5 | -67.0 | 0.04 | 0.00 | |
| 3,121.0 | 6.20 | 268.20 | 3,103.4 | -67.4 | -292.1 | -67.4 | 0.76 | -0.75 | |
| 3,213.0 | 8.00 | 272.60 | 3,194.6 | -67.3 | -303.5 | -67.3 | 2.04 | 1.96 | |
| 3,305.0 | 7.60 | 272.40 | 3,285.8 | -66.7 | -315.9 | -66.7 | 0.44 | -0.43 | |
| 3,400.0 | 8.90 | 263.20 | 3,379.8 | -67.3 | -329.5 | -67.3 | 1.95 | 1.37 | |
| 3,494.0 | 8.00 | 264.80 | 3,472.8 | -68.8 | -343.2 | -68.8 | 0.99 | -0.96 | |
| 3,589.0 | 8.40 | 247.50 | 3,566.8 | -72.0 | -356.2 | -72.0 | 2.62 | 0.42 | |
| 3,683.0 | 7.20 | 249.00 | 3,660.0 | -76.8 | -368.1 | -76.8 | 1.29 | -1.28 | |
| 3,778.0 | 6.20 | 247.80 | 3,754.3 | -80.9 | -378.4 | -80.9 | 1.06 | -1.05 | |
| 3,872.0 | 5.50 | 251.10 | 3,847.8 | -84.2 | -387.4 | -84.2 | 0.83 | -0.74 | |
| 3,967.0 | 7.50 | 254.90 | 3,942.2 | -87.3 | -397.6 | -87.3 | 2.15 | 2.11 | |
| 4,061.0 | 7.40 | 254.50 | 4,035.4 | -90.5 | -409.4 | -90.5 | 0.12 | -0.11 | |
| 4,156.0 | 6.20 | 254.40 | 4,129.8 | -93.6 | -420.2 | -93.6 | 1.26 | -1.26 | |
| 4,251.0 | 5.60 | 256.70 | 4,224.2 | -96.0 | -429.7 | -96.0 | 0.68 | -0.63 | |
| 4,345.0 | 6.90 | 261.70 | 4,317.7 | -97.9 | -439.7 | -97.9 | 1.50 | 1.38 | |
| 4,440.0 | 6.70 | 261.80 | 4,412.0 | -99.5 | -450.9 | -99.5 | 0.21 | -0.21 | |
| 4,535.0 | 8.80 | 254.30 | 4,506.1 | -102.2 | -463.4 | -102.2 | 2.45 | 2.21 | |
| 4,629.0 | 8.30 | 254.40 | 4,599.1 | -106.0 | -476.8 | -106.0 | 0.53 | -0.53 | |
| 4,724.0 | 7.30 | 250.10 | 4,693.2 | -109.9 | -489.1 | -109.9 | 1.22 | -1.05 | |
| 4,819.0 | 6.90 | 247.70 | 4,787.5 | -114.1 | -500.1 | -114.1 | 0.52 | -0.42 | |
| 4,914.0 | 6.30 | 246.90 | 4,881.9 | -118.3 | -510.1 | -118.3 | 0.64 | -0.63 | |
| 5,009.0 | 5.80 | 241.70 | 4,976.3 | -122.7 | -519.1 | -122.7 | 0.78 | -0.53 | |
| 5,103.0 | 6.50 | 263.10 | 5,069.8 | -125.6 | -528.6 | -125.6 | 2.53 | 0.74 | |
| 5,198.0 | 5.80 | 263.60 | 5,164.3 | -126.7 | -538.7 | -126.7 | 0.74 | -0.74 | |
| 5,293.0 | 7.60 | 265.20 | 5,258.6 | -127.8 | -549.8 | -127.8 | 1.90 | 1.89 | |
| 5,388.0 | 7.20 | 265.10 | 5,352.8 | -128.8 | -561.9 | -128.8 | 0.42 | -0.42 | |
| 5,483.0 | 6.00 | 261.80 | 5,447.2 | -130.0 | -572.8 | -130.0 | 1.32 | -1.26 | |
| 5,578.0 | 8.10 | 269.40 | 5,541.5 | -130.8 | -584.4 | -130.8 | 2.41 | 2.21 | |
| 5,672.0 | 6.90 | 267.10 | 5,634.6 | -131.2 | -596.7 | -131.2 | 1.32 | -1.28 | |
| 5,767.0 | 7.50 | 266.00 | 5,728.9 | -131.9 | -608.5 | -131.9 | 0.65 | 0.63 | |
| 5,863.0 | 6.40 | 270.90 | 5,824.2 | -132.3 | -620.1 | -132.3 | 1.30 | -1.15 | |
| 5,958.0 | 6.90 | 255.40 | 5,918.6 | -133.6 | -631.0 | -133.6 | 1.95 | 0.53 | |
| 6,053.0 | 5.20 | 257.30 | 6,013.0 | -136.0 | -640.7 | -136.0 | 1.80 | -1.79 | |

Cathedral Energy Services

Survey Report

| | | | |
|------------------|--|-------------------------------------|------------------------------|
| Company: | EnCana Oil & Gas (USA) Inc | Local Co-ordinate Reference: | Well Grant-Hurt 1B-14H-G268 |
| Project: | DJ Wattenberg | TVD Reference: | 32' KB @ 4920.0ft (PATT 326) |
| Site: | S14-T2N-R68W (Grant Elmquist/Salisbury/Hurt) | MD Reference: | 32' KB @ 4920.0ft (PATT 326) |
| Well: | Grant-Hurt 1B-14H-G268 | North Reference: | True |
| Wellbore: | Hz | Survey Calculation Method: | Minimum Curvature |
| Design: | FINAL | Database: | USA EDM 5000 Multi Users DB |

| Survey | | | | | | | | | |
|---------------------|-----------------|-------------|---------------------|------------|------------|-----------------------|-----------------------|----------------------|-----------------------|
| Measured Depth (ft) | Inclination (°) | Azimuth (°) | Vertical Depth (ft) | +N/-S (ft) | +E/-W (ft) | Vertical Section (ft) | Dogleg Rate (°/100ft) | Build Rate (°/100ft) | Formations / Comments |
| 6,148.0 | 6.50 | 259.40 | 6,107.5 | -137.9 | -650.2 | -137.9 | 1.39 | 1.37 | |
| 6,243.0 | 8.10 | 266.00 | 6,201.8 | -139.4 | -662.1 | -139.4 | 1.90 | 1.68 | |
| 6,290.0 | 7.70 | 270.90 | 6,248.3 | -139.6 | -668.6 | -139.6 | 1.67 | -0.85 | |
| 6,337.0 | 8.70 | 291.10 | 6,294.8 | -138.2 | -675.1 | -138.2 | 6.45 | 2.13 | |
| 6,384.0 | 10.60 | 308.90 | 6,341.2 | -134.2 | -681.7 | -134.2 | 7.48 | 4.04 | |
| 6,432.0 | 13.10 | 313.90 | 6,388.2 | -127.7 | -689.1 | -127.7 | 5.63 | 5.21 | |
| 6,479.0 | 14.30 | 327.80 | 6,433.8 | -119.1 | -696.0 | -119.1 | 7.43 | 2.55 | |
| 6,527.0 | 15.80 | 338.40 | 6,480.2 | -108.0 | -701.6 | -108.0 | 6.52 | 3.12 | |
| 6,574.0 | 17.40 | 343.80 | 6,525.2 | -95.3 | -705.9 | -95.3 | 4.73 | 3.40 | |
| 6,621.0 | 18.40 | 346.40 | 6,570.0 | -81.3 | -709.6 | -81.3 | 2.72 | 2.13 | |
| 6,668.0 | 18.90 | 349.00 | 6,614.5 | -66.7 | -712.8 | -66.7 | 2.06 | 1.06 | |
| 6,716.0 | 21.10 | 354.40 | 6,659.6 | -50.4 | -715.1 | -50.4 | 5.98 | 4.58 | |
| 6,763.0 | 24.00 | 356.70 | 6,703.0 | -32.5 | -716.5 | -32.5 | 6.45 | 6.17 | |
| 6,810.0 | 26.20 | 356.30 | 6,745.6 | -12.6 | -717.7 | -12.6 | 4.69 | 4.68 | |
| 6,857.0 | 29.10 | 353.40 | 6,787.2 | 9.2 | -719.7 | 9.2 | 6.80 | 6.17 | |
| 6,905.0 | 32.00 | 351.60 | 6,828.5 | 33.3 | -722.9 | 33.3 | 6.33 | 6.04 | |
| 6,952.0 | 34.90 | 348.90 | 6,867.7 | 58.9 | -727.3 | 58.9 | 6.93 | 6.17 | |
| 7,000.0 | 37.60 | 348.80 | 6,906.4 | 86.7 | -732.8 | 86.7 | 5.63 | 5.62 | |
| 7,047.0 | 39.30 | 349.30 | 6,943.3 | 115.4 | -738.4 | 115.4 | 3.68 | 3.62 | |
| 7,094.0 | 40.40 | 351.80 | 6,979.3 | 145.1 | -743.3 | 145.1 | 4.13 | 2.34 | |
| 7,141.0 | 41.80 | 356.00 | 7,014.8 | 175.8 | -746.6 | 175.8 | 6.59 | 2.98 | |
| 7,189.0 | 44.20 | 359.10 | 7,049.9 | 208.5 | -747.9 | 208.5 | 6.66 | 5.00 | |
| 7,236.0 | 47.60 | 358.90 | 7,082.6 | 242.2 | -748.5 | 242.2 | 7.24 | 7.23 | |
| 7,284.0 | 51.20 | 359.70 | 7,113.8 | 278.7 | -749.0 | 278.7 | 7.61 | 7.50 | |
| 7,331.0 | 56.40 | 359.40 | 7,141.6 | 316.6 | -749.3 | 316.6 | 11.08 | 11.06 | |
| 7,379.0 | 62.90 | 356.90 | 7,165.8 | 358.0 | -750.6 | 358.0 | 14.27 | 13.54 | |
| 7,426.0 | 69.10 | 354.60 | 7,184.9 | 400.8 | -753.8 | 400.8 | 13.93 | 13.19 | |
| 7,474.0 | 73.30 | 355.30 | 7,200.4 | 446.0 | -757.8 | 446.0 | 8.86 | 8.75 | |
| 7,521.0 | 78.00 | 358.20 | 7,212.0 | 491.5 | -760.4 | 491.5 | 11.65 | 10.00 | |
| 7,568.0 | 80.90 | 359.00 | 7,220.6 | 537.6 | -761.5 | 537.6 | 6.39 | 6.17 | |
| 7,615.0 | 83.30 | 358.50 | 7,227.1 | 584.2 | -762.5 | 584.2 | 5.21 | 5.11 | |
| 7,663.0 | 84.70 | 358.80 | 7,232.1 | 631.9 | -763.7 | 631.9 | 2.98 | 2.92 | |
| 7,700.0 | 85.50 | 358.70 | 7,235.3 | 668.8 | -764.5 | 668.8 | 2.18 | 2.16 | |
| 7,805.0 | 89.40 | 359.20 | 7,239.9 | 773.6 | -766.4 | 773.6 | 3.74 | 3.71 | |
| 7,897.0 | 89.30 | 358.10 | 7,241.0 | 865.6 | -768.6 | 865.6 | 1.20 | -0.11 | |
| 7,990.0 | 88.90 | 357.20 | 7,242.4 | 958.5 | -772.4 | 958.5 | 1.06 | -0.43 | |
| 8,082.0 | 90.90 | 358.00 | 7,242.6 | 1,050.4 | -776.2 | 1,050.4 | 2.34 | 2.17 | |
| 8,174.0 | 90.40 | 358.90 | 7,241.6 | 1,142.4 | -778.7 | 1,142.4 | 1.12 | -0.54 | |
| 8,266.0 | 90.60 | 1.10 | 7,240.8 | 1,234.4 | -778.7 | 1,234.4 | 2.40 | 0.22 | |
| 8,358.0 | 89.50 | 1.40 | 7,240.7 | 1,326.3 | -776.7 | 1,326.3 | 1.24 | -1.20 | |
| 8,451.0 | 91.60 | 0.50 | 7,239.8 | 1,419.3 | -775.2 | 1,419.3 | 2.46 | 2.26 | |
| 8,543.0 | 88.70 | 1.70 | 7,239.5 | 1,511.3 | -773.4 | 1,511.3 | 3.41 | -3.15 | |
| 8,635.0 | 89.20 | 1.10 | 7,241.2 | 1,603.3 | -771.2 | 1,603.3 | 0.85 | 0.54 | |
| 8,727.0 | 88.00 | 1.70 | 7,243.5 | 1,695.2 | -768.9 | 1,695.2 | 1.46 | -1.30 | |
| 8,819.0 | 88.10 | 0.80 | 7,246.6 | 1,787.1 | -766.9 | 1,787.1 | 0.98 | 0.11 | |
| 8,911.0 | 89.10 | 2.00 | 7,248.9 | 1,879.1 | -764.7 | 1,879.1 | 1.70 | 1.09 | |
| 9,003.0 | 89.40 | 1.50 | 7,250.1 | 1,971.0 | -761.8 | 1,971.0 | 0.63 | 0.33 | |
| 9,095.0 | 89.20 | 1.10 | 7,251.2 | 2,063.0 | -759.8 | 2,063.0 | 0.49 | -0.22 | |
| 9,186.0 | 90.90 | 0.50 | 7,251.1 | 2,154.0 | -758.5 | 2,154.0 | 1.98 | 1.87 | |
| 9,278.0 | 91.30 | 359.80 | 7,249.3 | 2,246.0 | -758.2 | 2,246.0 | 0.88 | 0.43 | |
| 9,369.0 | 90.30 | 0.90 | 7,248.1 | 2,336.9 | -757.7 | 2,336.9 | 1.63 | -1.10 | |
| 9,462.0 | 91.00 | 0.60 | 7,247.0 | 2,429.9 | -756.5 | 2,429.9 | 0.82 | 0.75 | |
| 9,554.0 | 90.10 | 2.00 | 7,246.1 | 2,521.9 | -754.4 | 2,521.9 | 1.81 | -0.98 | |

Cathedral Energy Services

Survey Report

| | | | |
|------------------|--|-------------------------------------|------------------------------|
| Company: | EnCana Oil & Gas (USA) Inc | Local Co-ordinate Reference: | Well Grant-Hurt 1B-14H-G268 |
| Project: | DJ Wattenberg | TVD Reference: | 32' KB @ 4920.0ft (PATT 326) |
| Site: | S14-T2N-R68W (Grant Elmquist/Salisbury/Hurt) | MD Reference: | 32' KB @ 4920.0ft (PATT 326) |
| Well: | Grant-Hurt 1B-14H-G268 | North Reference: | True |
| Wellbore: | Hz | Survey Calculation Method: | Minimum Curvature |
| Design: | FINAL | Database: | USA EDM 5000 Multi Users DB |

Survey

| Measured Depth (ft) | Inclination (°) | Azimuth (°) | Vertical Depth (ft) | +N/-S (ft) | +E/-W (ft) | Vertical Section (ft) | Dogleg Rate (°/100ft) | Build Rate (°/100ft) | Formations / Comments |
|---------------------|-----------------|-------------|---------------------|------------|------------|-----------------------|-----------------------|----------------------|------------------------------|
| 9,647.0 | 91.00 | 2.30 | 7,245.2 | 2,614.8 | -750.9 | 2,614.8 | 1.02 | 0.97 | |
| 9,740.0 | 89.40 | 1.50 | 7,244.9 | 2,707.8 | -747.8 | 2,707.8 | 1.92 | -1.72 | |
| 9,832.0 | 89.70 | 0.90 | 7,245.6 | 2,799.7 | -745.9 | 2,799.7 | 0.73 | 0.33 | |
| 9,925.0 | 90.70 | 0.40 | 7,245.3 | 2,892.7 | -744.8 | 2,892.7 | 1.20 | 1.08 | |
| 10,018.0 | 88.90 | 359.50 | 7,245.6 | 2,985.7 | -744.9 | 2,985.7 | 2.16 | -1.94 | |
| 10,113.0 | 88.80 | 359.00 | 7,247.5 | 3,080.7 | -746.2 | 3,080.7 | 0.54 | -0.11 | |
| 10,206.0 | 88.60 | 358.40 | 7,249.6 | 3,173.7 | -748.3 | 3,173.7 | 0.68 | -0.22 | |
| 10,300.0 | 89.20 | 358.20 | 7,251.5 | 3,267.6 | -751.1 | 3,267.6 | 0.67 | 0.64 | |
| 10,394.0 | 89.10 | 357.30 | 7,252.8 | 3,361.5 | -754.7 | 3,361.5 | 0.96 | -0.11 | |
| 10,488.0 | 90.20 | 357.60 | 7,253.4 | 3,455.4 | -758.9 | 3,455.4 | 1.21 | 1.17 | |
| 10,582.0 | 90.00 | 359.70 | 7,253.3 | 3,549.4 | -761.1 | 3,549.4 | 2.24 | -0.21 | |
| 10,676.0 | 91.00 | 1.70 | 7,252.4 | 3,643.4 | -760.0 | 3,643.4 | 2.38 | 1.06 | |
| 10,770.0 | 90.90 | 1.00 | 7,250.9 | 3,737.3 | -757.8 | 3,737.3 | 0.75 | -0.11 | |
| 10,864.0 | 90.20 | 0.00 | 7,250.0 | 3,831.3 | -757.0 | 3,831.3 | 1.30 | -0.74 | |
| 10,959.0 | 89.70 | 359.50 | 7,250.1 | 3,926.3 | -757.4 | 3,926.3 | 0.74 | -0.53 | |
| 11,053.0 | 91.20 | 359.70 | 7,249.3 | 4,020.3 | -758.0 | 4,020.3 | 1.61 | 1.60 | |
| 11,148.0 | 91.30 | 358.80 | 7,247.2 | 4,115.3 | -759.3 | 4,115.3 | 0.95 | 0.11 | |
| 11,242.0 | 91.00 | 359.70 | 7,245.4 | 4,209.3 | -760.5 | 4,209.3 | 1.01 | -0.32 | |
| 11,337.0 | 89.60 | 0.00 | 7,244.9 | 4,304.2 | -760.8 | 4,304.2 | 1.51 | -1.47 | |
| 11,431.0 | 90.00 | 0.40 | 7,245.2 | 4,398.2 | -760.4 | 4,398.2 | 0.60 | 0.43 | |
| 11,525.0 | 89.80 | 359.70 | 7,245.4 | 4,492.2 | -760.3 | 4,492.2 | 0.77 | -0.21 | |
| 11,620.0 | 89.60 | 359.40 | 7,245.9 | 4,587.2 | -761.1 | 4,587.2 | 0.38 | -0.21 | |
| 11,715.0 | 90.10 | 1.10 | 7,246.1 | 4,682.2 | -760.7 | 4,682.2 | 1.87 | 0.53 | |
| 11,810.0 | 91.00 | 1.90 | 7,245.2 | 4,777.2 | -758.2 | 4,777.2 | 1.27 | 0.95 | |
| 11,905.0 | 91.70 | 1.30 | 7,243.0 | 4,872.1 | -755.5 | 4,872.1 | 0.97 | 0.74 | |
| 12,000.0 | 90.50 | 0.90 | 7,241.1 | 4,967.1 | -753.7 | 4,967.1 | 1.33 | -1.26 | |
| 12,095.0 | 89.50 | 1.60 | 7,241.1 | 5,062.1 | -751.6 | 5,062.1 | 1.28 | -1.05 | |
| 12,190.0 | 89.50 | 1.30 | 7,242.0 | 5,157.0 | -749.2 | 5,157.0 | 0.32 | 0.00 | |
| 12,284.0 | 89.40 | 1.60 | 7,242.9 | 5,251.0 | -746.9 | 5,251.0 | 0.34 | -0.11 | |
| 12,379.0 | 90.20 | 3.30 | 7,243.2 | 5,345.9 | -742.8 | 5,345.9 | 1.98 | 0.84 | |
| 12,474.0 | 90.10 | 2.10 | 7,242.9 | 5,440.8 | -738.3 | 5,440.8 | 1.27 | -0.11 | |
| 12,569.0 | 91.80 | 4.20 | 7,241.4 | 5,535.6 | -733.1 | 5,535.6 | 2.84 | 1.79 | |
| 12,663.0 | 92.70 | 3.30 | 7,237.7 | 5,629.4 | -727.0 | 5,629.4 | 1.35 | 0.96 | |
| 12,758.0 | 90.80 | 3.30 | 7,234.8 | 5,724.2 | -721.5 | 5,724.2 | 2.00 | -2.00 | |
| 12,853.0 | 91.70 | 2.20 | 7,232.7 | 5,819.0 | -716.9 | 5,819.0 | 1.50 | 0.95 | |
| 12,948.0 | 89.90 | 2.60 | 7,231.4 | 5,913.9 | -713.0 | 5,913.9 | 1.94 | -1.89 | |
| 13,043.0 | 90.70 | 2.50 | 7,230.9 | 6,008.8 | -708.7 | 6,008.8 | 0.85 | 0.84 | |
| 13,138.0 | 88.20 | 2.10 | 7,231.8 | 6,103.7 | -704.9 | 6,103.7 | 2.67 | -2.63 | |
| 13,232.0 | 88.50 | 1.30 | 7,234.5 | 6,197.7 | -702.1 | 6,197.7 | 0.91 | 0.32 | |
| 13,328.0 | 88.60 | 0.40 | 7,236.9 | 6,293.6 | -700.7 | 6,293.6 | 0.94 | 0.10 | |
| 13,423.0 | 88.80 | 0.40 | 7,239.1 | 6,388.6 | -700.0 | 6,388.6 | 0.21 | 0.21 | |
| 13,518.0 | 92.10 | 1.50 | 7,238.3 | 6,483.6 | -698.5 | 6,483.6 | 3.66 | 3.47 | |
| 13,612.0 | 93.40 | 0.70 | 7,233.8 | 6,577.4 | -696.7 | 6,577.4 | 1.62 | 1.38 | |
| 13,707.0 | 91.90 | 1.90 | 7,229.4 | 6,672.3 | -694.5 | 6,672.3 | 2.02 | -1.58 | |
| 13,802.0 | 90.60 | 2.10 | 7,227.4 | 6,767.2 | -691.2 | 6,767.2 | 1.38 | -1.37 | |
| 13,896.0 | 90.90 | 1.20 | 7,226.1 | 6,861.2 | -688.5 | 6,861.2 | 1.01 | 0.32 | |
| 13,991.0 | 91.40 | 1.10 | 7,224.2 | 6,956.1 | -686.6 | 6,956.1 | 0.54 | 0.53 | |
| 14,086.0 | 91.30 | 1.50 | 7,222.0 | 7,051.1 | -684.4 | 7,051.1 | 0.43 | -0.11 | |
| 14,205.0 | 92.70 | 0.60 | 7,217.8 | 7,170.0 | -682.3 | 7,170.0 | 1.40 | 1.18 | Last CES Survey @ 14,205' MD |
| 14,255.0 | 92.70 | 0.60 | 7,215.5 | 7,219.9 | -681.7 | 7,219.9 | 0.00 | 0.00 | PTB @ 14,225' |

Cathedral Energy Services

Survey Report

| | | | |
|------------------|--|-------------------------------------|------------------------------|
| Company: | EnCana Oil & Gas (USA) Inc | Local Co-ordinate Reference: | Well Grant-Hurt 1B-14H-G268 |
| Project: | DJ Wattenberg | TVD Reference: | 32' KB @ 4920.0ft (PATT 326) |
| Site: | S14-T2N-R68W (Grant Elmquist/Salisbury/Hurt) | MD Reference: | 32' KB @ 4920.0ft (PATT 326) |
| Well: | Grant-Hurt 1B-14H-G268 | North Reference: | True |
| Wellbore: | Hz | Survey Calculation Method: | Minimum Curvature |
| Design: | FINAL | Database: | USA EDM 5000 Multi Users DB |

| Targets | | | | | | | | | |
|--|-----------|----------|---------|---------|--------|--------------|--------------|-----------|-------------|
| Target Name | | | | | | | | | |
| - hit/miss target | Dip Angle | Dip Dir. | TVD | +N/-S | +E/-W | Northing | Easting | Latitude | Longitude |
| - Shape | (°) | (°) | (ft) | (ft) | (ft) | (ft) | (ft) | | |
| Grant-Hurt 1B-14H-G26i - actual wellpath misses target center by 11.3ft at 7158.9ft MD (7028.0 TVD, 187.8 N, -747.3 E) - Point | 0.00 | 0.00 | 7,034.1 | 180.9 | -753.9 | 1,294,210.62 | 3,148,351.20 | 40.139777 | -104.969397 |
| Grant-Hurt 1B-14H-G26i - actual wellpath misses target center by 91.2ft at 14255.0ft MD (7215.5 TVD, 7219.9 N, -681.7 E) - Point | 0.00 | 0.00 | 7,220.0 | 7,307.5 | -656.8 | 1,301,337.64 | 3,148,405.42 | 40.159340 | -104.969050 |
| Grant-Hurt 1B-14H-G26i - actual wellpath misses target center by 8.7ft at 9832.2ft MD (7245.6 TVD, 2799.9 N, -745.9 E) - Point | 0.00 | 0.00 | 7,246.0 | 2,800.0 | -754.6 | 1,296,829.63 | 3,148,334.78 | 40.146966 | -104.969399 |
| Grant-Hurt 1B-14H-G26i - actual wellpath misses target center by 66.2ft at 9831.6ft MD (7245.6 TVD, 2799.3 N, -745.9 E) - Point | 0.00 | 0.00 | 7,180.0 | 2,800.0 | -754.6 | 1,296,829.63 | 3,148,334.78 | 40.146966 | -104.969399 |
| Grant-Hurt 1B-14H-G26i - actual wellpath misses target center by 97.7ft at 14255.0ft MD (7215.5 TVD, 7219.9 N, -681.7 E) - Point | 0.00 | 0.00 | 7,180.0 | 7,307.5 | -656.8 | 1,301,337.64 | 3,148,405.42 | 40.159340 | -104.969050 |
| Grant-Hurt 1B-14H-G26i - actual wellpath misses target center by 46.1ft at 11755.1ft MD (7245.9 TVD, 4722.3 N, -759.8 E) - Point | 0.00 | 0.00 | 7,246.0 | 4,721.1 | -713.7 | 1,298,750.97 | 3,148,364.09 | 40.152240 | -104.969253 |
| Grant-Hurt 1B-14H-G26i - actual wellpath misses target center by 35.8ft at 7109.7ft MD (6991.2 TVD, 155.2 N, -744.6 E) - Point | 0.00 | 0.00 | 6,968.1 | 180.9 | -753.9 | 1,294,210.62 | 3,148,351.20 | 40.139777 | -104.969397 |

| Design Annotations | | | | |
|--------------------|----------------|-------------------|------------|------------------------------|
| Measured Depth | Vertical Depth | Local Coordinates | | Comment |
| (ft) | (ft) | +N/-S (ft) | +E/-W (ft) | |
| 14,205.0 | 7,217.8 | 7,170.0 | -682.3 | Last CES Survey @ 14,205' MD |
| 14,255.0 | 7,215.5 | 7,219.9 | -681.7 | PTB @ 14,225' |

Checked By: _____ Approved By: _____ Date: _____

EnCana Oil & Gas (USA) Inc

DJ Wattenberg

S14-T2N-R68W (Grant Elmquist/Salisbury/Hurt)

Grant-Hurt 1B-14H-G268

Hz

Design: FINAL

Survey Report - Geographic

07 August, 2014

Cathedral Energy Services

Survey Report - Geographic

| | | | |
|------------------|--|-------------------------------------|------------------------------|
| Company: | EnCana Oil & Gas (USA) Inc | Local Co-ordinate Reference: | Well Grant-Hurt 1B-14H-G268 |
| Project: | DJ Wattenberg | TVD Reference: | 32' KB @ 4920.0ft (PATT 326) |
| Site: | S14-T2N-R68W (Grant Elmquist/Salisbury/Hurt) | MD Reference: | 32' KB @ 4920.0ft (PATT 326) |
| Well: | Grant-Hurt 1B-14H-G268 | North Reference: | True |
| Wellbore: | Hz | Survey Calculation Method: | Minimum Curvature |
| Design: | FINAL | Database: | USA EDM 5000 Multi Users DB |

| | | | |
|--------------------|---------------------------|----------------------|----------------|
| Project | DJ Wattenberg | | |
| Map System: | US State Plane 1983 | System Datum: | Mean Sea Level |
| Geo Datum: | North American Datum 1983 | | |
| Map Zone: | Colorado Northern Zone | | |

| | | | | | |
|-----------------------|--|--------------|-----------------|-------------------|-------------|
| Site | S14-T2N-R68W (Grant Elmquist/Salisbury/Hurt) | | | | |
| Site Position: | | Northing: | 1,295,686.81 ft | Latitude: | 40.143850 |
| From: | Lat/Long | Easting: | 3,147,060.98 ft | Longitude: | -104.973980 |
| Position Uncertainty: | 0.0 ft | Slot Radius: | 13.200 in | Grid Convergence: | 0.34 ° |

| | | | | | | |
|----------------------|------------------------|--------|---------------------|-----------------|---------------|-------------|
| Well | Grant-Hurt 1B-14H-G268 | | | | | |
| Well Position | +N/-S | 0.0 ft | Northing: | 1,294,034.21 ft | Latitude: | 40.139280 |
| | +E/-W | 0.0 ft | Easting: | 3,149,106.18 ft | Longitude: | -104.966700 |
| Position Uncertainty | | 0.0 ft | Wellhead Elevation: | ft | Ground Level: | 4,888.0 ft |

| | | | | | |
|------------------|-------------------|--------------------|------------------------|----------------------|----------------------------|
| Wellbore | Hz | | | | |
| Magnetics | Model Name | Sample Date | Declination (°) | Dip Angle (°) | Field Strength (nT) |
| | IGRF2010 | 7/22/2014 | 8.53 | 66.70 | 52,646 |

| | | | | | |
|--------------------------|------------------------------|-------------------|-------------------|----------------------|-----|
| Design | FINAL | | | | |
| Audit Notes: | | | | | |
| Version: | 1.0 | Phase: | ACTUAL | Tie On Depth: | 0.0 |
| Vertical Section: | Depth From (TVD) (ft) | +N/-S (ft) | +E/-W (ft) | Direction (°) | |
| | 0.0 | 0.0 | 0.0 | 0.00 | |

| | | | | | |
|-----------------------|----------------|--------------------------|------------------|--------------------|--|
| Survey Program | Date | 8/7/2014 | | | |
| From (ft) | To (ft) | Survey (Wellbore) | Tool Name | Description | |
| 146.0 | 14,255.0 | Survey #1 (Hz) | Geolink MWD | Geolink MWD | |

| | | | | | | | | | |
|----------------------------|------------------------|--------------------|----------------------------|-------------------|-------------------|--------------------------|-------------------------|-----------------|------------------|
| Survey | | | | | | | | | |
| Measured Depth (ft) | Inclination (°) | Azimuth (°) | Vertical Depth (ft) | +N/-S (ft) | +E/-W (ft) | Map Northing (ft) | Map Easting (ft) | Latitude | Longitude |
| 0.0 | 0.00 | 0.00 | 0.0 | 0.0 | 0.0 | 1,294,034.21 | 3,149,106.18 | 40.139280 | -104.966700 |
| 146.0 | 0.30 | 6.90 | 146.0 | 0.4 | 0.0 | 1,294,034.59 | 3,149,106.22 | 40.139281 | -104.966700 |
| 241.0 | 0.80 | 318.20 | 241.0 | 1.1 | -0.4 | 1,294,035.33 | 3,149,105.80 | 40.139283 | -104.966702 |
| 335.0 | 1.50 | 315.70 | 335.0 | 2.5 | -1.7 | 1,294,036.69 | 3,149,104.50 | 40.139287 | -104.966706 |
| 430.0 | 1.50 | 305.70 | 429.9 | 4.1 | -3.5 | 1,294,038.30 | 3,149,102.61 | 40.139291 | -104.966713 |
| 525.0 | 1.80 | 258.60 | 524.9 | 4.5 | -6.0 | 1,294,038.71 | 3,149,100.14 | 40.139292 | -104.966722 |
| 620.0 | 3.60 | 242.90 | 619.8 | 2.9 | -10.1 | 1,294,037.03 | 3,149,096.03 | 40.139288 | -104.966737 |
| 714.0 | 5.10 | 240.90 | 713.5 | -0.5 | -16.4 | 1,294,033.62 | 3,149,089.77 | 40.139279 | -104.966759 |
| 809.0 | 5.40 | 240.60 | 808.1 | -4.7 | -24.0 | 1,294,029.33 | 3,149,082.21 | 40.139267 | -104.966786 |
| 840.0 | 5.50 | 241.40 | 839.0 | -6.2 | -26.6 | 1,294,027.88 | 3,149,079.64 | 40.139263 | -104.966795 |
| 911.0 | 6.10 | 244.30 | 909.6 | -9.4 | -33.0 | 1,294,024.58 | 3,149,073.28 | 40.139254 | -104.966818 |
| 1,003.0 | 6.60 | 262.40 | 1,001.1 | -12.3 | -42.6 | 1,294,021.70 | 3,149,063.65 | 40.139246 | -104.966853 |

Cathedral Energy Services

Survey Report - Geographic

| | | | |
|------------------|--|-------------------------------------|------------------------------|
| Company: | EnCana Oil & Gas (USA) Inc | Local Co-ordinate Reference: | Well Grant-Hurt 1B-14H-G268 |
| Project: | DJ Wattenberg | TVD Reference: | 32' KB @ 4920.0ft (PATT 326) |
| Site: | S14-T2N-R68W (Grant Elmquist/Salisbury/Hurt) | MD Reference: | 32' KB @ 4920.0ft (PATT 326) |
| Well: | Grant-Hurt 1B-14H-G268 | North Reference: | True |
| Wellbore: | Hz | Survey Calculation Method: | Minimum Curvature |
| Design: | FINAL | Database: | USA EDM 5000 Multi Users DB |

| Survey | | | | | | | | | |
|---------------------|-----------------|-------------|---------------------|------------|------------|-------------------|------------------|-----------|-------------|
| Measured Depth (ft) | Inclination (°) | Azimuth (°) | Vertical Depth (ft) | +N/-S (ft) | +E/-W (ft) | Map Northing (ft) | Map Easting (ft) | Latitude | Longitude |
| 1,094.0 | 7.00 | 268.90 | 1,091.4 | -13.1 | -53.3 | 1,294,020.84 | 3,149,052.93 | 40.139244 | -104.966891 |
| 1,186.0 | 6.70 | 268.80 | 1,182.8 | -13.3 | -64.3 | 1,294,020.55 | 3,149,041.96 | 40.139244 | -104.966930 |
| 1,278.0 | 7.80 | 256.60 | 1,274.0 | -14.8 | -75.7 | 1,294,018.93 | 3,149,030.53 | 40.139239 | -104.966971 |
| 1,371.0 | 7.50 | 252.40 | 1,366.2 | -18.1 | -87.7 | 1,294,015.56 | 3,149,018.62 | 40.139230 | -104.967014 |
| 1,463.0 | 7.20 | 250.90 | 1,457.5 | -21.8 | -98.8 | 1,294,011.79 | 3,149,007.47 | 40.139220 | -104.967054 |
| 1,555.0 | 7.10 | 248.60 | 1,548.7 | -25.8 | -109.6 | 1,294,007.76 | 3,148,996.76 | 40.139209 | -104.967092 |
| 1,647.0 | 6.60 | 246.60 | 1,640.1 | -30.0 | -119.7 | 1,294,003.53 | 3,148,986.63 | 40.139198 | -104.967128 |
| 1,739.0 | 7.10 | 260.70 | 1,731.4 | -33.0 | -130.2 | 1,294,000.45 | 3,148,976.19 | 40.139189 | -104.967166 |
| 1,832.0 | 6.90 | 259.70 | 1,823.7 | -34.9 | -141.4 | 1,293,998.45 | 3,148,965.03 | 40.139184 | -104.967206 |
| 1,925.0 | 7.00 | 254.10 | 1,916.1 | -37.5 | -152.3 | 1,293,995.83 | 3,148,954.10 | 40.139177 | -104.967245 |
| 2,016.0 | 6.90 | 248.40 | 2,006.4 | -41.0 | -162.7 | 1,293,992.24 | 3,148,943.71 | 40.139168 | -104.967282 |
| 2,108.0 | 6.50 | 247.30 | 2,097.8 | -45.0 | -172.7 | 1,293,988.14 | 3,148,933.79 | 40.139156 | -104.967318 |
| 2,200.0 | 7.50 | 262.20 | 2,189.1 | -47.9 | -183.4 | 1,293,985.25 | 3,148,923.05 | 40.139149 | -104.967356 |
| 2,292.0 | 7.30 | 255.40 | 2,280.3 | -50.2 | -195.0 | 1,293,982.89 | 3,148,911.46 | 40.139142 | -104.967398 |
| 2,384.0 | 7.10 | 255.20 | 2,371.6 | -53.1 | -206.2 | 1,293,979.90 | 3,148,900.33 | 40.139134 | -104.967438 |
| 2,476.0 | 6.80 | 252.80 | 2,462.9 | -56.1 | -216.9 | 1,293,976.77 | 3,148,889.64 | 40.139126 | -104.967476 |
| 2,568.0 | 6.60 | 247.90 | 2,554.3 | -59.7 | -227.0 | 1,293,973.11 | 3,148,879.56 | 40.139116 | -104.967512 |
| 2,658.0 | 6.90 | 262.20 | 2,643.7 | -62.4 | -237.1 | 1,293,970.37 | 3,148,869.43 | 40.139109 | -104.967548 |
| 2,750.0 | 6.70 | 256.00 | 2,735.0 | -64.5 | -247.8 | 1,293,968.25 | 3,148,858.76 | 40.139103 | -104.967587 |
| 2,842.0 | 7.30 | 267.60 | 2,826.4 | -66.0 | -258.9 | 1,293,966.64 | 3,148,847.72 | 40.139099 | -104.967626 |
| 2,935.0 | 6.90 | 267.30 | 2,918.6 | -66.5 | -270.3 | 1,293,966.06 | 3,148,836.24 | 40.139097 | -104.967667 |
| 3,028.0 | 6.90 | 267.60 | 3,011.0 | -67.0 | -281.5 | 1,293,965.50 | 3,148,825.08 | 40.139096 | -104.967707 |
| 3,121.0 | 6.20 | 268.20 | 3,103.4 | -67.4 | -292.1 | 1,293,965.05 | 3,148,814.49 | 40.139095 | -104.967745 |
| 3,213.0 | 8.00 | 272.60 | 3,194.6 | -67.3 | -303.5 | 1,293,965.11 | 3,148,803.12 | 40.139095 | -104.967786 |
| 3,305.0 | 7.60 | 272.40 | 3,285.8 | -66.7 | -315.9 | 1,293,965.58 | 3,148,790.65 | 40.139097 | -104.967830 |
| 3,400.0 | 8.90 | 263.20 | 3,379.8 | -67.3 | -329.5 | 1,293,964.89 | 3,148,777.08 | 40.139095 | -104.967879 |
| 3,494.0 | 8.00 | 264.80 | 3,472.8 | -68.8 | -343.2 | 1,293,963.36 | 3,148,763.35 | 40.139091 | -104.967928 |
| 3,589.0 | 8.40 | 247.50 | 3,566.8 | -72.0 | -356.2 | 1,293,960.02 | 3,148,750.37 | 40.139082 | -104.967974 |
| 3,683.0 | 7.20 | 249.00 | 3,660.0 | -76.8 | -368.1 | 1,293,955.21 | 3,148,738.56 | 40.139069 | -104.968017 |
| 3,778.0 | 6.20 | 247.80 | 3,754.3 | -80.9 | -378.4 | 1,293,951.08 | 3,148,728.28 | 40.139058 | -104.968054 |
| 3,872.0 | 5.50 | 251.10 | 3,847.8 | -84.2 | -387.4 | 1,293,947.65 | 3,148,719.33 | 40.139049 | -104.968086 |
| 3,967.0 | 7.50 | 254.90 | 3,942.2 | -87.3 | -397.6 | 1,293,944.50 | 3,148,709.06 | 40.139040 | -104.968123 |
| 4,061.0 | 7.40 | 254.50 | 4,035.4 | -90.5 | -409.4 | 1,293,941.21 | 3,148,697.32 | 40.139031 | -104.968165 |
| 4,156.0 | 6.20 | 254.40 | 4,129.8 | -93.6 | -420.2 | 1,293,938.13 | 3,148,686.50 | 40.139023 | -104.968203 |
| 4,251.0 | 5.60 | 256.70 | 4,224.2 | -96.0 | -429.7 | 1,293,935.63 | 3,148,677.07 | 40.139016 | -104.968237 |
| 4,345.0 | 6.90 | 261.70 | 4,317.7 | -97.9 | -439.7 | 1,293,933.70 | 3,148,667.03 | 40.139011 | -104.968273 |
| 4,440.0 | 6.70 | 261.80 | 4,412.0 | -99.5 | -450.9 | 1,293,932.02 | 3,148,655.90 | 40.139007 | -104.968313 |
| 4,535.0 | 8.80 | 254.30 | 4,506.1 | -102.2 | -463.4 | 1,293,929.18 | 3,148,643.44 | 40.138999 | -104.968358 |
| 4,629.0 | 8.30 | 254.40 | 4,599.1 | -106.0 | -476.8 | 1,293,925.33 | 3,148,630.00 | 40.138989 | -104.968406 |
| 4,724.0 | 7.30 | 250.10 | 4,693.2 | -109.9 | -489.1 | 1,293,921.36 | 3,148,617.75 | 40.138978 | -104.968450 |
| 4,819.0 | 6.90 | 247.70 | 4,787.5 | -114.1 | -500.1 | 1,293,917.07 | 3,148,606.82 | 40.138967 | -104.968489 |
| 4,914.0 | 6.30 | 246.90 | 4,881.9 | -118.3 | -510.1 | 1,293,912.80 | 3,148,596.77 | 40.138955 | -104.968525 |
| 5,009.0 | 5.80 | 241.70 | 4,976.3 | -122.7 | -519.1 | 1,293,908.43 | 3,148,587.78 | 40.138943 | -104.968557 |
| 5,103.0 | 6.50 | 263.10 | 5,069.8 | -125.6 | -528.6 | 1,293,905.48 | 3,148,578.33 | 40.138935 | -104.968591 |
| 5,198.0 | 5.80 | 263.60 | 5,164.3 | -126.7 | -538.7 | 1,293,904.24 | 3,148,568.23 | 40.138932 | -104.968627 |
| 5,293.0 | 7.60 | 265.20 | 5,258.6 | -127.8 | -549.8 | 1,293,903.11 | 3,148,557.20 | 40.138929 | -104.968667 |
| 5,388.0 | 7.20 | 265.10 | 5,352.8 | -128.8 | -561.9 | 1,293,902.00 | 3,148,545.02 | 40.138926 | -104.968710 |
| 5,483.0 | 6.00 | 261.80 | 5,447.2 | -130.0 | -572.8 | 1,293,900.72 | 3,148,534.18 | 40.138923 | -104.968749 |
| 5,578.0 | 8.10 | 269.40 | 5,541.5 | -130.8 | -584.4 | 1,293,899.87 | 3,148,522.58 | 40.138921 | -104.968791 |
| 5,672.0 | 6.90 | 267.10 | 5,634.6 | -131.2 | -596.7 | 1,293,899.45 | 3,148,510.32 | 40.138920 | -104.968834 |
| 5,767.0 | 7.50 | 266.00 | 5,728.9 | -131.9 | -608.5 | 1,293,898.65 | 3,148,498.44 | 40.138918 | -104.968877 |
| 5,863.0 | 6.40 | 270.90 | 5,824.2 | -132.3 | -620.1 | 1,293,898.23 | 3,148,486.84 | 40.138917 | -104.968918 |
| 5,958.0 | 6.90 | 255.40 | 5,918.6 | -133.6 | -631.0 | 1,293,896.81 | 3,148,476.03 | 40.138913 | -104.968957 |
| 6,053.0 | 5.20 | 257.30 | 6,013.0 | -136.0 | -640.7 | 1,293,894.37 | 3,148,466.32 | 40.138907 | -104.968992 |
| 6,148.0 | 6.50 | 259.40 | 6,107.5 | -137.9 | -650.2 | 1,293,892.37 | 3,148,456.85 | 40.138901 | -104.969026 |

Cathedral Energy Services

Survey Report - Geographic

| | | | |
|------------------|--|-------------------------------------|------------------------------|
| Company: | EnCana Oil & Gas (USA) Inc | Local Co-ordinate Reference: | Well Grant-Hurt 1B-14H-G268 |
| Project: | DJ Wattenberg | TVD Reference: | 32' KB @ 4920.0ft (PATT 326) |
| Site: | S14-T2N-R68W (Grant Elmquist/Salisbury/Hurt) | MD Reference: | 32' KB @ 4920.0ft (PATT 326) |
| Well: | Grant-Hurt 1B-14H-G268 | North Reference: | True |
| Wellbore: | Hz | Survey Calculation Method: | Minimum Curvature |
| Design: | FINAL | Database: | USA EDM 5000 Multi Users DB |

| Survey | | | | | | | | | |
|---------------------|-----------------|-------------|---------------------|------------|------------|-------------------|------------------|-----------|-------------|
| Measured Depth (ft) | Inclination (°) | Azimuth (°) | Vertical Depth (ft) | +N/-S (ft) | +E/-W (ft) | Map Northing (ft) | Map Easting (ft) | Latitude | Longitude |
| 6,243.0 | 8.10 | 266.00 | 6,201.8 | -139.4 | -662.1 | 1,293,890.85 | 3,148,444.89 | 40.138897 | -104.969069 |
| 6,290.0 | 7.70 | 270.90 | 6,248.3 | -139.6 | -668.6 | 1,293,890.63 | 3,148,438.44 | 40.138897 | -104.969092 |
| 6,337.0 | 8.70 | 291.10 | 6,294.8 | -138.2 | -675.1 | 1,293,891.92 | 3,148,431.97 | 40.138901 | -104.969115 |
| 6,384.0 | 10.60 | 308.90 | 6,341.2 | -134.2 | -681.7 | 1,293,895.87 | 3,148,425.26 | 40.138912 | -104.969139 |
| 6,432.0 | 13.10 | 313.90 | 6,388.2 | -127.7 | -689.1 | 1,293,902.37 | 3,148,417.87 | 40.138929 | -104.969165 |
| 6,479.0 | 14.30 | 327.80 | 6,433.8 | -119.1 | -696.0 | 1,293,910.94 | 3,148,410.88 | 40.138953 | -104.969190 |
| 6,527.0 | 15.80 | 338.40 | 6,480.2 | -108.0 | -701.6 | 1,293,922.00 | 3,148,405.25 | 40.138984 | -104.969210 |
| 6,574.0 | 17.40 | 343.80 | 6,525.2 | -95.3 | -705.9 | 1,293,934.67 | 3,148,400.86 | 40.139018 | -104.969225 |
| 6,621.0 | 18.40 | 346.40 | 6,570.0 | -81.3 | -709.6 | 1,293,948.61 | 3,148,397.07 | 40.139057 | -104.969238 |
| 6,668.0 | 18.90 | 349.00 | 6,614.5 | -66.7 | -712.8 | 1,293,963.27 | 3,148,393.78 | 40.139097 | -104.969250 |
| 6,716.0 | 21.10 | 354.40 | 6,659.6 | -50.4 | -715.1 | 1,293,979.49 | 3,148,391.36 | 40.139142 | -104.969258 |
| 6,763.0 | 24.00 | 356.70 | 6,703.0 | -32.5 | -716.5 | 1,293,997.45 | 3,148,389.87 | 40.139191 | -104.969263 |
| 6,810.0 | 26.20 | 356.30 | 6,745.6 | -12.6 | -717.7 | 1,294,017.34 | 3,148,388.53 | 40.139246 | -104.969267 |
| 6,857.0 | 29.10 | 353.40 | 6,787.2 | 9.2 | -719.7 | 1,294,039.04 | 3,148,386.42 | 40.139305 | -104.969275 |
| 6,905.0 | 32.00 | 351.60 | 6,828.5 | 33.3 | -722.9 | 1,294,063.20 | 3,148,383.07 | 40.139372 | -104.969286 |
| 6,952.0 | 34.90 | 348.90 | 6,867.7 | 58.9 | -727.3 | 1,294,088.69 | 3,148,378.51 | 40.139442 | -104.969302 |
| 7,000.0 | 37.60 | 348.80 | 6,906.4 | 86.7 | -732.8 | 1,294,116.51 | 3,148,372.86 | 40.139518 | -104.969321 |
| 7,047.0 | 39.30 | 349.30 | 6,943.3 | 115.4 | -738.4 | 1,294,145.16 | 3,148,367.13 | 40.139597 | -104.969341 |
| 7,094.0 | 40.40 | 351.80 | 6,979.3 | 145.1 | -743.3 | 1,294,174.84 | 3,148,362.02 | 40.139678 | -104.969359 |
| 7,141.0 | 41.80 | 356.00 | 7,014.8 | 175.8 | -746.6 | 1,294,205.53 | 3,148,358.57 | 40.139763 | -104.969371 |
| 7,189.0 | 44.20 | 359.10 | 7,049.9 | 208.5 | -747.9 | 1,294,238.21 | 3,148,356.99 | 40.139852 | -104.969376 |
| 7,236.0 | 47.60 | 358.90 | 7,082.6 | 242.2 | -748.5 | 1,294,271.95 | 3,148,356.20 | 40.139945 | -104.969378 |
| 7,284.0 | 51.20 | 359.70 | 7,113.8 | 278.7 | -749.0 | 1,294,308.38 | 3,148,355.54 | 40.140045 | -104.969379 |
| 7,331.0 | 56.40 | 359.40 | 7,141.6 | 316.6 | -749.3 | 1,294,346.29 | 3,148,355.01 | 40.140149 | -104.969380 |
| 7,379.0 | 62.90 | 356.90 | 7,165.8 | 358.0 | -750.6 | 1,294,387.66 | 3,148,353.40 | 40.140263 | -104.969385 |
| 7,426.0 | 69.10 | 354.60 | 7,184.9 | 400.8 | -753.8 | 1,294,430.43 | 3,148,349.94 | 40.140380 | -104.969397 |
| 7,474.0 | 73.30 | 355.30 | 7,200.4 | 446.0 | -757.8 | 1,294,475.66 | 3,148,345.67 | 40.140504 | -104.969411 |
| 7,521.0 | 78.00 | 358.20 | 7,212.0 | 491.5 | -760.4 | 1,294,521.08 | 3,148,342.83 | 40.140629 | -104.969420 |
| 7,568.0 | 80.90 | 359.00 | 7,220.6 | 537.6 | -761.5 | 1,294,567.26 | 3,148,341.43 | 40.140756 | -104.969424 |
| 7,615.0 | 83.30 | 358.50 | 7,227.1 | 584.2 | -762.5 | 1,294,613.79 | 3,148,340.13 | 40.140884 | -104.969428 |
| 7,663.0 | 84.70 | 358.80 | 7,232.1 | 631.9 | -763.7 | 1,294,661.51 | 3,148,338.72 | 40.141015 | -104.969432 |
| 7,700.0 | 85.50 | 358.70 | 7,235.3 | 668.8 | -764.5 | 1,294,698.36 | 3,148,337.69 | 40.141116 | -104.969435 |
| 7,805.0 | 89.40 | 359.20 | 7,239.9 | 773.6 | -766.4 | 1,294,803.22 | 3,148,335.14 | 40.141404 | -104.969442 |
| 7,897.0 | 89.30 | 358.10 | 7,241.0 | 865.6 | -768.6 | 1,294,895.17 | 3,148,332.42 | 40.141656 | -104.969449 |
| 7,990.0 | 88.90 | 357.20 | 7,242.4 | 958.5 | -772.4 | 1,294,988.06 | 3,148,328.05 | 40.141911 | -104.969463 |
| 8,082.0 | 90.90 | 358.00 | 7,242.6 | 1,050.4 | -776.2 | 1,295,079.95 | 3,148,323.64 | 40.142164 | -104.969477 |
| 8,174.0 | 90.40 | 358.90 | 7,241.6 | 1,142.4 | -778.7 | 1,295,171.89 | 3,148,320.60 | 40.142416 | -104.969486 |
| 8,266.0 | 90.60 | 1.10 | 7,240.8 | 1,234.4 | -778.7 | 1,295,263.88 | 3,148,320.05 | 40.142669 | -104.969486 |
| 8,358.0 | 89.50 | 1.40 | 7,240.7 | 1,326.3 | -776.7 | 1,295,355.87 | 3,148,321.50 | 40.142921 | -104.969479 |
| 8,451.0 | 91.60 | 0.50 | 7,239.8 | 1,419.3 | -775.2 | 1,295,448.85 | 3,148,322.49 | 40.143176 | -104.969473 |
| 8,543.0 | 88.70 | 1.70 | 7,239.5 | 1,511.3 | -773.4 | 1,295,540.83 | 3,148,323.70 | 40.143429 | -104.969467 |
| 8,635.0 | 89.20 | 1.10 | 7,241.2 | 1,603.3 | -771.2 | 1,295,632.80 | 3,148,325.39 | 40.143681 | -104.969459 |
| 8,727.0 | 88.00 | 1.70 | 7,243.5 | 1,695.2 | -768.9 | 1,295,724.75 | 3,148,327.09 | 40.143934 | -104.969451 |
| 8,819.0 | 88.10 | 0.80 | 7,246.6 | 1,787.1 | -766.9 | 1,295,816.69 | 3,148,328.54 | 40.144186 | -104.969443 |
| 8,911.0 | 89.10 | 2.00 | 7,248.9 | 1,879.1 | -764.7 | 1,295,908.64 | 3,148,330.23 | 40.144438 | -104.969435 |
| 9,003.0 | 89.40 | 1.50 | 7,250.1 | 1,971.0 | -761.8 | 1,296,000.61 | 3,148,332.49 | 40.144691 | -104.969425 |
| 9,095.0 | 89.20 | 1.10 | 7,251.2 | 2,063.0 | -759.8 | 1,296,092.59 | 3,148,334.02 | 40.144943 | -104.969418 |
| 9,186.0 | 90.90 | 0.50 | 7,251.1 | 2,154.0 | -758.5 | 1,296,183.58 | 3,148,334.75 | 40.145193 | -104.969413 |
| 9,278.0 | 91.30 | 359.80 | 7,249.3 | 2,246.0 | -758.2 | 1,296,275.56 | 3,148,334.44 | 40.145445 | -104.969413 |
| 9,369.0 | 90.30 | 0.90 | 7,248.1 | 2,336.9 | -757.7 | 1,296,366.55 | 3,148,334.44 | 40.145695 | -104.969411 |
| 9,462.0 | 91.00 | 0.60 | 7,247.0 | 2,429.9 | -756.5 | 1,296,459.54 | 3,148,335.10 | 40.145950 | -104.969406 |
| 9,554.0 | 90.10 | 2.00 | 7,246.1 | 2,521.9 | -754.4 | 1,296,551.52 | 3,148,336.64 | 40.146203 | -104.969399 |
| 9,647.0 | 91.00 | 2.30 | 7,245.2 | 2,614.8 | -750.9 | 1,296,644.47 | 3,148,339.57 | 40.146458 | -104.969386 |
| 9,740.0 | 89.40 | 1.50 | 7,244.9 | 2,707.8 | -747.8 | 1,296,737.43 | 3,148,342.09 | 40.146713 | -104.969375 |
| 9,832.0 | 89.70 | 0.90 | 7,245.6 | 2,799.7 | -745.9 | 1,296,829.42 | 3,148,343.46 | 40.146966 | -104.969368 |

Cathedral Energy Services

Survey Report - Geographic

| | | | |
|------------------|--|-------------------------------------|------------------------------|
| Company: | EnCana Oil & Gas (USA) Inc | Local Co-ordinate Reference: | Well Grant-Hurt 1B-14H-G268 |
| Project: | DJ Wattenberg | TVD Reference: | 32' KB @ 4920.0ft (PATT 326) |
| Site: | S14-T2N-R68W (Grant Elmquist/Salisbury/Hurt) | MD Reference: | 32' KB @ 4920.0ft (PATT 326) |
| Well: | Grant-Hurt 1B-14H-G268 | North Reference: | True |
| Wellbore: | Hz | Survey Calculation Method: | Minimum Curvature |
| Design: | FINAL | Database: | USA EDM 5000 Multi Users DB |

| Survey | | | | | | | | | |
|------------------------------|-----------------|-------------|---------------------|------------|------------|-------------------|------------------|-----------|-------------|
| Measured Depth (ft) | Inclination (°) | Azimuth (°) | Vertical Depth (ft) | +N/-S (ft) | +E/-W (ft) | Map Northing (ft) | Map Easting (ft) | Latitude | Longitude |
| 9,925.0 | 90.70 | 0.40 | 7,245.3 | 2,892.7 | -744.8 | 1,296,922.42 | 3,148,343.96 | 40.147221 | -104.969365 |
| 10,018.0 | 88.90 | 359.50 | 7,245.6 | 2,985.7 | -744.9 | 1,297,015.41 | 3,148,343.32 | 40.147476 | -104.969365 |
| 10,113.0 | 88.80 | 359.00 | 7,247.5 | 3,080.7 | -746.2 | 1,297,110.37 | 3,148,341.50 | 40.147737 | -104.969369 |
| 10,206.0 | 88.60 | 358.40 | 7,249.6 | 3,173.7 | -748.3 | 1,297,203.31 | 3,148,338.84 | 40.147992 | -104.969377 |
| 10,300.0 | 89.20 | 358.20 | 7,251.5 | 3,267.6 | -751.1 | 1,297,297.23 | 3,148,335.48 | 40.148250 | -104.969387 |
| 10,394.0 | 89.10 | 357.30 | 7,252.8 | 3,361.5 | -754.7 | 1,297,391.12 | 3,148,331.23 | 40.148508 | -104.969400 |
| 10,488.0 | 90.20 | 357.60 | 7,253.4 | 3,455.4 | -758.9 | 1,297,485.00 | 3,148,326.48 | 40.148766 | -104.969415 |
| 10,582.0 | 90.00 | 359.70 | 7,253.3 | 3,549.4 | -761.1 | 1,297,578.96 | 3,148,323.70 | 40.149024 | -104.969423 |
| 10,676.0 | 91.00 | 1.70 | 7,252.4 | 3,643.4 | -760.0 | 1,297,672.94 | 3,148,324.28 | 40.149282 | -104.969419 |
| 10,770.0 | 90.90 | 1.00 | 7,250.9 | 3,737.3 | -757.8 | 1,297,766.92 | 3,148,325.93 | 40.149539 | -104.969411 |
| 10,864.0 | 90.20 | 0.00 | 7,250.0 | 3,831.3 | -757.0 | 1,297,860.91 | 3,148,326.19 | 40.149797 | -104.969408 |
| 10,959.0 | 89.70 | 359.50 | 7,250.1 | 3,926.3 | -757.4 | 1,297,955.90 | 3,148,325.20 | 40.150058 | -104.969410 |
| 11,053.0 | 91.20 | 359.70 | 7,249.3 | 4,020.3 | -758.0 | 1,298,049.89 | 3,148,323.98 | 40.150316 | -104.969412 |
| 11,148.0 | 91.30 | 358.80 | 7,247.2 | 4,115.3 | -759.3 | 1,298,144.85 | 3,148,322.17 | 40.150577 | -104.969416 |
| 11,242.0 | 91.00 | 359.70 | 7,245.4 | 4,209.3 | -760.5 | 1,298,238.81 | 3,148,320.37 | 40.150835 | -104.969421 |
| 11,337.0 | 89.60 | 0.00 | 7,244.9 | 4,304.2 | -760.8 | 1,298,333.81 | 3,148,319.55 | 40.151096 | -104.969422 |
| 11,431.0 | 90.00 | 0.40 | 7,245.2 | 4,398.2 | -760.4 | 1,298,427.81 | 3,148,319.31 | 40.151354 | -104.969421 |
| 11,525.0 | 89.80 | 359.70 | 7,245.4 | 4,492.2 | -760.3 | 1,298,521.80 | 3,148,318.83 | 40.151612 | -104.969420 |
| 11,620.0 | 89.60 | 359.40 | 7,245.9 | 4,587.2 | -761.1 | 1,298,616.79 | 3,148,317.51 | 40.151873 | -104.969423 |
| 11,715.0 | 90.10 | 1.10 | 7,246.1 | 4,682.2 | -760.7 | 1,298,711.79 | 3,148,317.36 | 40.152133 | -104.969422 |
| 11,810.0 | 91.00 | 1.90 | 7,245.2 | 4,777.2 | -758.2 | 1,298,806.76 | 3,148,319.27 | 40.152394 | -104.969413 |
| 11,905.0 | 91.70 | 1.30 | 7,243.0 | 4,872.1 | -755.5 | 1,298,901.71 | 3,148,321.35 | 40.152655 | -104.969403 |
| 12,000.0 | 90.50 | 0.90 | 7,241.1 | 4,967.1 | -753.7 | 1,298,996.69 | 3,148,322.61 | 40.152915 | -104.969397 |
| 12,095.0 | 89.50 | 1.60 | 7,241.1 | 5,062.1 | -751.6 | 1,299,091.67 | 3,148,324.11 | 40.153176 | -104.969389 |
| 12,190.0 | 89.50 | 1.30 | 7,242.0 | 5,157.0 | -749.2 | 1,299,186.65 | 3,148,325.94 | 40.153437 | -104.969381 |
| 12,284.0 | 89.40 | 1.60 | 7,242.9 | 5,251.0 | -746.9 | 1,299,280.63 | 3,148,327.75 | 40.153695 | -104.969372 |
| 12,379.0 | 90.20 | 3.30 | 7,243.2 | 5,345.9 | -742.8 | 1,299,375.56 | 3,148,331.24 | 40.153955 | -104.969358 |
| 12,474.0 | 90.10 | 2.10 | 7,242.9 | 5,440.8 | -738.3 | 1,299,470.48 | 3,148,335.15 | 40.154216 | -104.969342 |
| 12,569.0 | 91.80 | 4.20 | 7,241.4 | 5,535.6 | -733.1 | 1,299,565.34 | 3,148,339.80 | 40.154476 | -104.969323 |
| 12,663.0 | 92.70 | 3.30 | 7,237.7 | 5,629.4 | -727.0 | 1,299,659.10 | 3,148,345.38 | 40.154733 | -104.969301 |
| 12,758.0 | 90.80 | 3.30 | 7,234.8 | 5,724.2 | -721.5 | 1,299,753.93 | 3,148,350.27 | 40.154994 | -104.969281 |
| 12,853.0 | 91.70 | 2.20 | 7,232.7 | 5,819.0 | -716.9 | 1,299,848.82 | 3,148,354.26 | 40.155254 | -104.969265 |
| 12,948.0 | 89.90 | 2.60 | 7,231.4 | 5,913.9 | -713.0 | 1,299,943.75 | 3,148,357.66 | 40.155515 | -104.969251 |
| 13,043.0 | 90.70 | 2.50 | 7,230.9 | 6,008.8 | -708.7 | 1,300,038.67 | 3,148,361.32 | 40.155775 | -104.969236 |
| 13,138.0 | 88.20 | 2.10 | 7,231.8 | 6,103.7 | -704.9 | 1,300,133.61 | 3,148,364.56 | 40.156036 | -104.969222 |
| 13,232.0 | 88.50 | 1.30 | 7,234.5 | 6,197.7 | -702.1 | 1,300,227.54 | 3,148,366.78 | 40.156293 | -104.969212 |
| 13,328.0 | 88.60 | 0.40 | 7,236.9 | 6,293.6 | -700.7 | 1,300,323.50 | 3,148,367.63 | 40.156557 | -104.969207 |
| 13,423.0 | 88.80 | 0.40 | 7,239.1 | 6,388.6 | -700.0 | 1,300,418.48 | 3,148,367.72 | 40.156818 | -104.969205 |
| 13,518.0 | 92.10 | 1.50 | 7,238.3 | 6,483.6 | -698.5 | 1,300,513.46 | 3,148,368.73 | 40.157078 | -104.969199 |
| 13,612.0 | 93.40 | 0.70 | 7,233.8 | 6,577.4 | -696.7 | 1,300,607.34 | 3,148,369.96 | 40.157336 | -104.969193 |
| 13,707.0 | 91.90 | 1.90 | 7,229.4 | 6,672.3 | -694.5 | 1,300,702.22 | 3,148,371.55 | 40.157596 | -104.969185 |
| 13,802.0 | 90.60 | 2.10 | 7,227.4 | 6,767.2 | -691.2 | 1,300,797.16 | 3,148,374.29 | 40.157857 | -104.969173 |
| 13,896.0 | 90.90 | 1.20 | 7,226.1 | 6,861.2 | -688.5 | 1,300,891.12 | 3,148,376.43 | 40.158115 | -104.969164 |
| 13,991.0 | 91.40 | 1.10 | 7,224.2 | 6,956.1 | -686.6 | 1,300,986.09 | 3,148,377.77 | 40.158376 | -104.969157 |
| 14,086.0 | 91.30 | 1.50 | 7,222.0 | 7,051.1 | -684.4 | 1,301,081.05 | 3,148,379.35 | 40.158636 | -104.969149 |
| 14,205.0 | 92.70 | 0.60 | 7,217.8 | 7,170.0 | -682.3 | 1,301,199.94 | 3,148,380.81 | 40.158963 | -104.969141 |
| Last CES Survey @ 14,205' MD | | | | | | | | | |
| 14,255.0 | 92.70 | 0.60 | 7,215.5 | 7,219.9 | -681.7 | 1,301,249.88 | 3,148,381.04 | 40.159100 | -104.969139 |
| PTB @ 14,225' | | | | | | | | | |

Cathedral Energy Services

Survey Report - Geographic

| | | | |
|------------------|--|-------------------------------------|------------------------------|
| Company: | EnCana Oil & Gas (USA) Inc | Local Co-ordinate Reference: | Well Grant-Hurt 1B-14H-G268 |
| Project: | DJ Wattenberg | TVD Reference: | 32' KB @ 4920.0ft (PATT 326) |
| Site: | S14-T2N-R68W (Grant Elmquist/Salisbury/Hurt) | MD Reference: | 32' KB @ 4920.0ft (PATT 326) |
| Well: | Grant-Hurt 1B-14H-G268 | North Reference: | True |
| Wellbore: | Hz | Survey Calculation Method: | Minimum Curvature |
| Design: | FINAL | Database: | USA EDM 5000 Multi Users DB |

| Design Targets | | | | | | | | | |
|---|-----------|----------|---------|---------|--------|--------------|--------------|-----------|-------------|
| Target Name | | | | | | | | | |
| - hit/miss target | Dip Angle | Dip Dir. | TVD | +N/-S | +E/-W | Northing | Easting | Latitude | Longitude |
| - Shape | (°) | (°) | (ft) | (ft) | (ft) | (ft) | (ft) | | |
| Grant-Hurt 1B-14H-G268i | 0.00 | 0.00 | 7,034.1 | 180.9 | -753.9 | 1,294,210.62 | 3,148,351.20 | 40.139777 | -104.969397 |
| - actual wellpath misses target center by 11.3ft at 7158.9ft MD (7028.0 TVD, 187.8 N, -747.3 E) | | | | | | | | | |
| - Point | | | | | | | | | |
| Grant-Hurt 1B-14H-G268i | 0.00 | 0.00 | 7,220.0 | 7,307.5 | -656.8 | 1,301,337.63 | 3,148,405.42 | 40.159340 | -104.969050 |
| - actual wellpath misses target center by 91.2ft at 14255.0ft MD (7215.5 TVD, 7219.9 N, -681.7 E) | | | | | | | | | |
| - Point | | | | | | | | | |

| Design Annotations | | | | | |
|--------------------|----------------|-------------------|------------|------------------------------|--|
| Measured Depth | Vertical Depth | Local Coordinates | | | |
| (ft) | (ft) | +N/-S (ft) | +E/-W (ft) | Comment | |
| 14,205.0 | 7,217.8 | 7,170.0 | -682.3 | Last CES Survey @ 14,205' MD | |
| 14,255.0 | 7,215.5 | 7,219.9 | -681.7 | PTB @ 14,225' | |

Checked By: _____ Approved By: _____ Date: _____