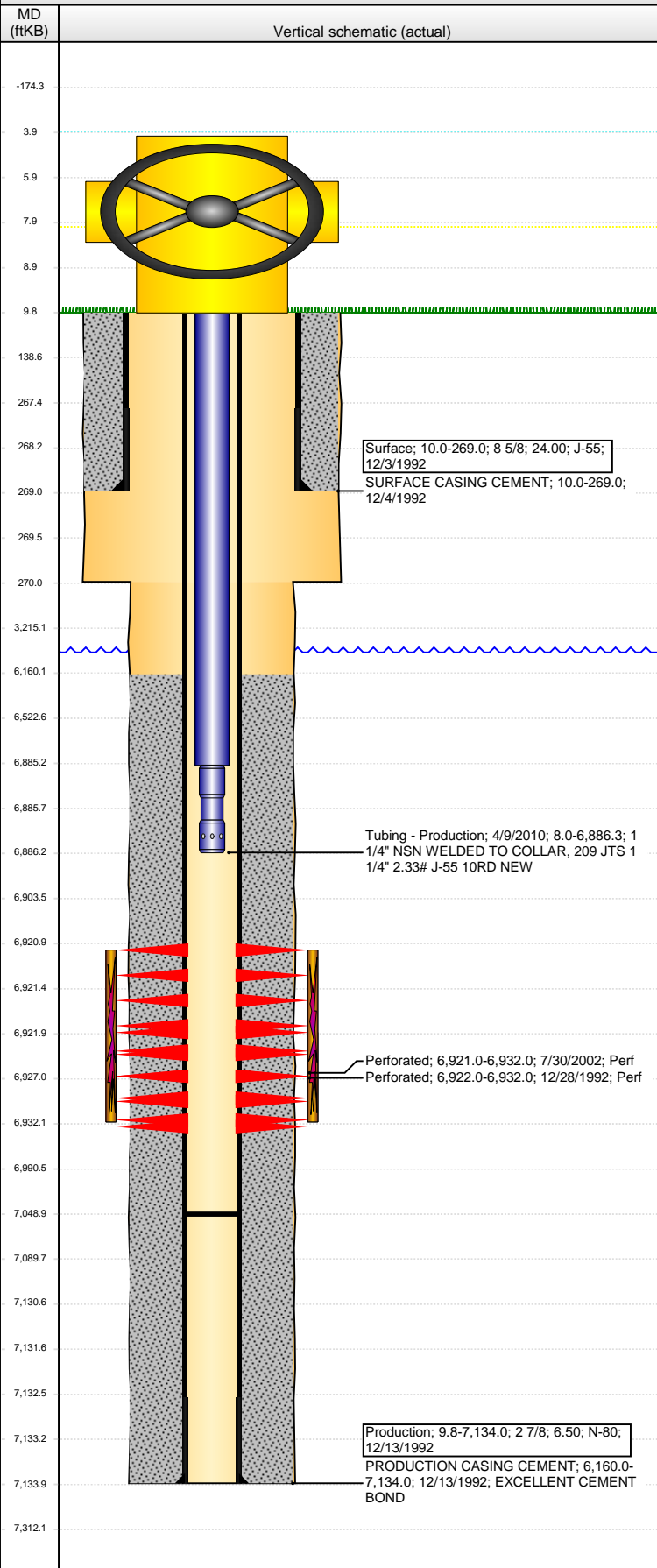


# Wellbore Schematic Input Report

**Well Name:** KUIS C05-07

VERTICAL - ORIGINAL HOLE, 12/4/2014 1:14:51 PM



## Well Header

API	Business Unit	District	Well Config
05-123-16569	DJ BASIN	15	VERTICAL
Original KB Elevation (ft)	KB - GL / MSL (ftKB)	Spud Date	P & A Date
4,730.00	10.00	12/3/1992	

## Comment

DRILL REPORT SAYS TD WAS 7068' BUT CASING WAS RUN TO 7134'.

NOTCHED 1 1/4" EUE NIPPLE AT 7,049' WITH PIN LOOKING UP.

## Directions To Well

WCR 50 & WCR 53, S .5, W .5 (ON NORTHSIDE OF DITCH), N INTO

## Congressional Location

Quarter 1	Quarter 2	Quarter 3	Quarter 4	Section	Township	Twnshp N...	Range	Rng E/W Dir
	SW	NE		5	4	N	64	W

## Bottom Hole Location

North-South Distance (ft)	From N or S Line	East-West Distance (ft)	From E or W Line

## Plug Back Total Depths

Date	Depth (ftKB)	Method	Com
12/13/1992	7,083.0	TAG	GUIDE SHOE
4/6/2010	7,060.0	TBG TALLY	C/O WITH WORK STRING.
4/9/2010	7,049.0	TBG TALLY	TAG WITH PROD. STRING. NOTCHED NIPPLE AT...

## Wellbore Sections

Section Des	Size (in)	Act Top, MD (ftKB)	Act Btm, MD (ftKB)
SURFACE	12 1/4	10.0	270.0
PRODUCTION	7 7/8	270.0	7,134.0

## Zone Statuses

Zone Name	Status Date	Status	Job
CODELL	1/12/1993	PR	DRILLING/COMPLETION - ORIGINAL, 12/3/1992 00:00
CODELL	8/7/2002	PR	RE-FRAC, 7/26/2002 00:00
CODELL	5/5/2010	PR	TRI-FRAC, 3/18/2010 06:00

## Casing Strings

### Surface, 269.0ftKB

Casing Description	Run Date	OD (in)	Wt/Len (l...)	Grade	Top, MD (ft...)	MD (ftKB)
Surface	12/3/1992	8 5/8	24.00	J-55	10.0	269.0

### Production, 7,134.0ftKB

Casing Description	Run Date	OD (in)	Wt/Len (l...)	Grade	Top, MD (ft...)	MD (ftKB)
Production	12/13/1992	2 7/8	6.50	N-80	9.8	7,134.0

## Cement

Description	Top Depth (ftKB)	Bottom Depth (ftKB)
SURFACE CASING CEMENT	10.0	269.0
PRODUCTION CASING CEMENT	6,160.0	7,134.0

## Tubing Components

Item Des	OD (in)	Wt (lb/ft)	Grade	Jts	Len (ft)	Btm (ftKB)	Btm (TVD) (ftKB)
Tubing	1.66	2.33	J-55	209	6,877.19	6,885.2	
Notched Seating Nipple Welded to Collar	1 1/4		J-55	1	1.10	6,886.3	

## Perforation Data

Zone	Bnch/St g	Entered Shot Total	Top (ftKB)	Btm (ftKB)	Date
CODELL, ORIGINAL HOLE		48	6,921.00	6,932.00	7/30/2002
CODELL, ORIGINAL HOLE		40	6,922.00	6,932.00	12/28/1992

## Stimulations & Treatments

Date	Zone	Primary Job Type
12/28/1992	CODELL, ORIGINAL HOLE	DRILLING/COMPLETION - ORIGINAL
Technical Result	Tech Result Details	Tech Result Note

## Comment

Date	Zone	Primary Job Type
8/7/2002	CODELL, ORIGINAL HOLE	RE-FRAC
Technical Result	Tech Result Details	Tech Result Note

## Comment

**Well Name: KUIS C05-07**

VERTICAL - ORIGINAL HOLE, 12/4/2014 1:14:54 PM

## Stimulations & Treatments

Date	Zone	Primary Job Type
4/1/2010	CODELL, ORIGINAL HOLE	TRI-FRAC
Technical Result Success	Tech Result Details According to Plan	Tech Result Note
Comment (CODELL TF): JOB WENT WELL. NO ISSUES TO REPORT. TREATMENT AVGS: 27.5 CP, 66.7 F, 10.27 PH, NOLTE = 0.08. FINAL 5 MIN PRESS @ 3356 PSI.		

## Other In Hole

Run Date	Des	OD (in)	Top (ftKB)	Btm (ftKB)

## Logs

Date	Type	Top, MD (ftKB)	Btm, MD (ftKB)
12/13/1992	COMPENSATED DENSITY	6,100.0	7,125.0
12/28/1992	CBL/CCL/GR	6,060.0	7,078.0
11/5/2014	GYRO	10.0	6,800.0

