

EXTRACTION OIL & GAS

Location: COLORADO Slot: SLOT#01 WESTWIND 1(1121'FSL & 251'FWL,SEC.07)
Field: WELD COUNTY (NAD83/TRUE NORTH) Well: WESTWIND 1
Facility: SEC.07-T06N-R67W Wellbore: WESTWIND 1 PWB

Plot reference wellpath is WESTWIND 1 (REV-A.0) PWP

True vertical depths are referenced to RIG (RKB)	Grid System: NAD83 / Lambert Colorado SP, Northern Zone (501), US feet
Measured depths are referenced to RIG (RKB)	North Reference: True north
RIG (RKB) to Mean Sea Level: 4843 feet	Scale: True distance
Mean Sea Level to Mud line (At Slot: SLOT#01 WESTWIND 1(1121'FSL & 251'FWL,SEC.07)): 0 feet	Depths are in feet
Coordinates are in feet referenced to Slot	Created by: painsetr on 7/18/2014

Location Information

Facility Name			Grid East (US ft)	Grid North (US ft)	Latitude	Longitude
SEC.07-T06N-R67W			3154839.470	1424332.263	40°29'48.692"N	104°56'35.682"W
Slot	Local N (ft)	Local E (ft)	Grid East (US ft)	Grid North (US ft)	Latitude	Longitude
SLOT#01 WESTWIND 1(1121'FSL & 251'FWL,SEC.07)	0.00	0.00	3154839.470	1424332.263	40°29'48.692"N	104°56'35.682"W
RIG (RKB) to Mud line (At Slot: SLOT#01 WESTWIND 1(1121'FSL & 251'FWL,SEC.07))					4843ft	
Mean Sea Level to Mud line (At Slot: SLOT#01 WESTWIND 1(1121'FSL & 251'FWL,SEC.07))					0ft	
RIG (RKB) to Mean Sea Level					4843ft	

Targets

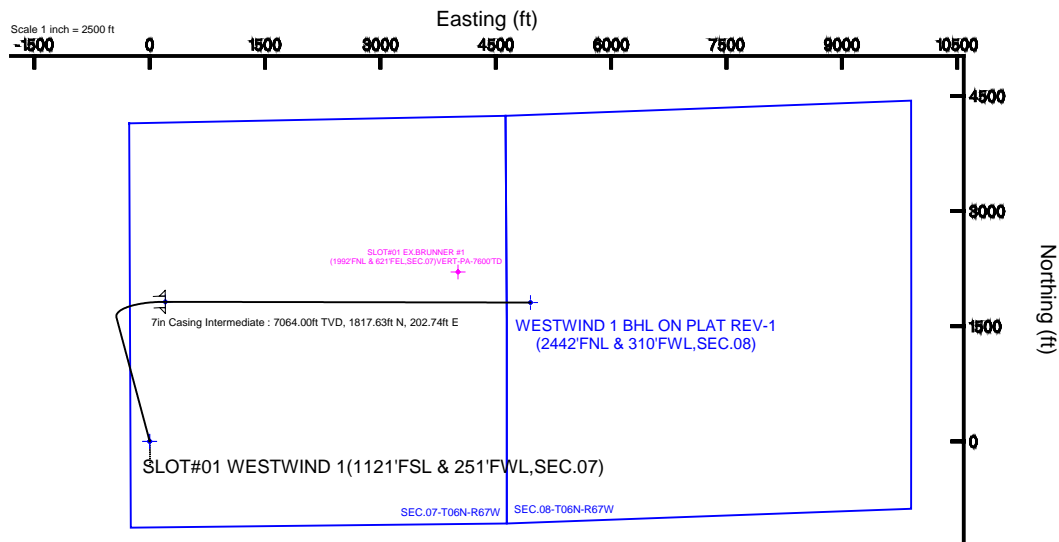
Name	MD (ft)	TVD (ft)	Local N (ft)	Local E (ft)	Grid East (US ft)	Grid North (US ft)	Latitude	Longitude
SEC.07-T06N-R67W		0.00	0.04	0.00	3154839.47	1424332.30	40°29'48.692"N	104°56'35.682"W
SEC.08-T06N-R67W		0.00	0.04	0.00	3154839.47	1424332.30	40°29'48.692"N	104°56'35.682"W
WESTWIND 1 BHL ON PLAT REV-1(2442'FNL & 310'FWL,SEC.08)	12464.43	7064.00	1808.29	4951.88	3155779.73	1426171.54	40°30'06.556"N	104°55'31.580"W
WESTWIND 1 LANDING	7715.27	7064.00	1817.63	202.74	3155030.78	1426151.06	40°30'06.653"N	104°56'33.058"W

Survey Program

Start MD (ft)	End MD (ft)	Tool	Model	Log Name/Comment	Wellbore
24.00	13000.00	NaviTrak	NaviTrak (Standard)		WESTWIND 1 PWB

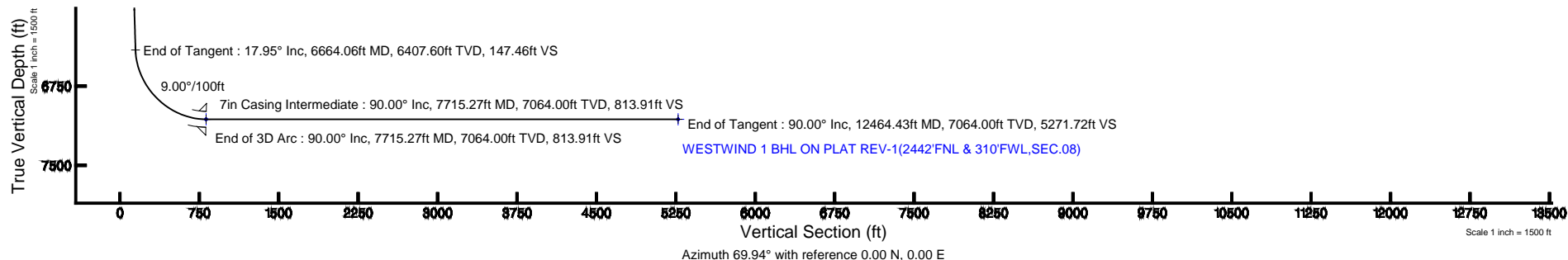
Well Profile Data

Design Comment	MD (ft)	Inc (°)	Az (°)	TVD (ft)	Local N (ft)	Local E (ft)	DLS (°/100ft)	VS (ft)
Tie On	24.00	0.000	345.004	24.00	0.00	0.00	0.00	0.00
End of Tangent	800.00	0.000	345.004	800.00	0.00	0.00	0.00	0.00
End of Build	1697.71	17.954	345.004	1683.09	134.75	-36.10	2.00	12.32
End of Tangent	6664.06	17.954	345.004	6407.60	1613.53	-432.23	0.00	147.46
End of 3D Arc	7715.27	90.000	90.113	7064.00	1817.63	202.74	9.00	813.91
End of Tangent	12464.43	90.000	90.113	7064.00	1808.29	4951.88	0.00	5271.72



BGGM (1945.0 to 2016.0) Dip: 66.99° Field: 52781.3 nT
Magnetic North is 8.64 degrees East of True North (at 7/17/2014)

To correct azimuth from Magnetic to True add 8.64 degrees





Planned Wellpath Report

WESTWIND 1 (REV-A.0) PWP

Page 1 of 7



REFERENCE WELLPATH IDENTIFICATION

Operator	EXTRACTION OIL & GAS	Slot	SLOT#01 WESTWIND 1(1121'FSL & 251'FWL,SEC.07)
Area	COLORADO	Well	WESTWIND 1
Field	WELD COUNTY (NAD83/TRUE NORTH)	Wellbore	WESTWIND 1 PWB
Facility	SEC.07-T06N-R67W		

REPORT SETUP INFORMATION

Projection System	NAD83 / Lambert Colorado SP, Northern Zone (501), US feet	Software System	WellArchitect® 4.0.0
North Reference	True	User	Painsetr
Scale	0.999966	Report Generated	7/18/2014 at 7:54:55 AM
Convergence at slot	n/a	Database/Source file	WA_Denver/WESTWIND_1_PWB.xml

WELLPATH LOCATION

	Local coordinates		Grid coordinates		Geographic coordinates	
	North[ft]	East[ft]	Easting[US ft]	Northing[US ft]	Latitude	Longitude
Slot Location	0.00	0.00	3154839.47	1424332.26	40°29'48.692"N	104°56'35.682"W
Facility Reference Pt			3154839.47	1424332.26	40°29'48.692"N	104°56'35.682"W
Field Reference Pt			3185481.27	1419166.81	40°28'55.560"N	104°49'59.556"W

WELLPATH DATUM

Calculation method	Minimum curvature	RIG (RKB) to Facility Vertical Datum	4843.00ft
Horizontal Reference Pt	Slot	RIG (RKB) to Mean Sea Level	4843.00ft
Vertical Reference Pt	RIG (RKB)	RIG (RKB) to Mud Line at Slot (SLOT#01 WESTWIND 1(1121'FSL & 251'FWL,SEC.07))	4843.00ft
MD Reference Pt	RIG (RKB)	Section Origin	N 0.00, E 0.00 ft
Field Vertical Reference	Mean Sea Level	Section Azimuth	69.94°



Planned Wellpath Report

WESTWIND 1 (REV-A.0) PWP

Page 2 of 7



REFERENCE WELLPATH IDENTIFICATION

Operator	EXTRACTION OIL & GAS	Slot	SLOT#01 WESTWIND 1(1121'FSL & 251'FWL,SEC.07)
Area	COLORADO	Well	WESTWIND 1
Field	WELD COUNTY (NAD83/TRUE NORTH)	Wellbore	WESTWIND 1 PWB
Facility	SEC.07-T06N-R67W		

WELLPATH DATA (131 stations) † = interpolated/extrapolated station

MD [ft]	Inclination [°]	Azimuth [°]	TVD [ft]	Vert Sect [ft]	North [ft]	East [ft]	DLS [°/100ft]	Comments
0.00†	0.000	345.004	0.00	0.00	0.00	0.00	0.00	
24.00	0.000	345.004	24.00	0.00	0.00	0.00	0.00	Tie On
124.00†	0.000	345.004	124.00	0.00	0.00	0.00	0.00	
224.00†	0.000	345.004	224.00	0.00	0.00	0.00	0.00	
324.00†	0.000	345.004	324.00	0.00	0.00	0.00	0.00	
424.00†	0.000	345.004	424.00	0.00	0.00	0.00	0.00	
524.00†	0.000	345.004	524.00	0.00	0.00	0.00	0.00	
624.00†	0.000	345.004	624.00	0.00	0.00	0.00	0.00	
724.00†	0.000	345.004	724.00	0.00	0.00	0.00	0.00	
800.00	0.000	345.004	800.00	0.00	0.00	0.00	0.00	End of Tangent
824.00†	0.480	345.004	824.00	0.01	0.10	-0.03	2.00	
924.00†	2.480	345.004	923.96	0.24	2.59	-0.69	2.00	
1024.00†	4.480	345.004	1023.77	0.77	8.45	-2.26	2.00	
1124.00†	6.480	345.004	1123.31	1.62	17.68	-4.74	2.00	
1224.00†	8.480	345.004	1222.45	2.76	30.25	-8.10	2.00	
1324.00†	10.480	345.004	1321.08	4.22	46.16	-12.37	2.00	
1424.00†	12.480	345.004	1419.08	5.98	65.39	-17.52	2.00	
1524.00†	14.480	345.004	1516.32	8.03	87.90	-23.55	2.00	
1624.00†	16.480	345.004	1612.69	10.39	113.68	-30.45	2.00	
1697.71	17.954	345.004	1683.09	12.32	134.75	-36.10	2.00	End of Build
1724.00†	17.954	345.004	1708.10	13.03	142.58	-38.19	0.00	
1824.00†	17.954	345.004	1803.23	15.75	172.36	-46.17	0.00	
1924.00†	17.954	345.004	1898.36	18.47	202.13	-54.15	0.00	
2024.00†	17.954	345.004	1993.49	21.19	231.91	-62.12	0.00	
2124.00†	17.954	345.004	2088.62	23.92	261.69	-70.10	0.00	
2224.00†	17.954	345.004	2183.75	26.64	291.46	-78.08	0.00	
2324.00†	17.954	345.004	2278.88	29.36	321.24	-86.05	0.00	
2424.00†	17.954	345.004	2374.01	32.08	351.01	-94.03	0.00	
2524.00†	17.954	345.004	2469.14	34.80	380.79	-102.00	0.00	
2624.00†	17.954	345.004	2564.27	37.52	410.57	-109.98	0.00	



Planned Wellpath Report

WESTWIND 1 (REV-A.0) PWP

Page 3 of 7



REFERENCE WELLPATH IDENTIFICATION			
Operator	EXTRACTION OIL & GAS	Slot	SLOT#01 WESTWIND 1(1121'FSL & 251'FWL,SEC.07)
Area	COLORADO	Well	WESTWIND 1
Field	WELD COUNTY (NAD83/TRUE NORTH)	Wellbore	WESTWIND 1 PWB
Facility	SEC.07-T06N-R67W		

WELLPATH DATA (131 stations) † = interpolated/extrapolated station								
MD [ft]	Inclination [°]	Azimuth [°]	TVD [ft]	Vert Sect [ft]	North [ft]	East [ft]	DLS [°/100ft]	Comments
2724.00†	17.954	345.004	2659.40	40.24	440.34	-117.96	0.00	
2824.00†	17.954	345.004	2754.53	42.96	470.12	-125.93	0.00	
2924.00†	17.954	345.004	2849.66	45.69	499.89	-133.91	0.00	
3024.00†	17.954	345.004	2944.79	48.41	529.67	-141.89	0.00	
3124.00†	17.954	345.004	3039.92	51.13	559.44	-149.86	0.00	
3224.00†	17.954	345.004	3135.05	53.85	589.22	-157.84	0.00	
3324.00†	17.954	345.004	3230.19	56.57	619.00	-165.82	0.00	
3424.00†	17.954	345.004	3325.32	59.29	648.77	-173.79	0.00	
3524.00†	17.954	345.004	3420.45	62.01	678.55	-181.77	0.00	
3624.00†	17.954	345.004	3515.58	64.73	708.32	-189.74	0.00	
3724.00†	17.954	345.004	3610.71	67.46	738.10	-197.72	0.00	
3824.00†	17.954	345.004	3705.84	70.18	767.88	-205.70	0.00	
3924.00†	17.954	345.004	3800.97	72.90	797.65	-213.67	0.00	
4024.00†	17.954	345.004	3896.10	75.62	827.43	-221.65	0.00	
4124.00†	17.954	345.004	3991.23	78.34	857.20	-229.63	0.00	
4224.00†	17.954	345.004	4086.36	81.06	886.98	-237.60	0.00	
4324.00†	17.954	345.004	4181.49	83.78	916.76	-245.58	0.00	
4424.00†	17.954	345.004	4276.62	86.50	946.53	-253.55	0.00	
4524.00†	17.954	345.004	4371.75	89.23	976.31	-261.53	0.00	
4624.00†	17.954	345.004	4466.88	91.95	1006.08	-269.51	0.00	
4724.00†	17.954	345.004	4562.01	94.67	1035.86	-277.48	0.00	
4824.00†	17.954	345.004	4657.14	97.39	1065.63	-285.46	0.00	
4924.00†	17.954	345.004	4752.27	100.11	1095.41	-293.44	0.00	
5024.00†	17.954	345.004	4847.40	102.83	1125.19	-301.41	0.00	
5124.00†	17.954	345.004	4942.53	105.55	1154.96	-309.39	0.00	
5224.00†	17.954	345.004	5037.66	108.27	1184.74	-317.36	0.00	
5324.00†	17.954	345.004	5132.79	111.00	1214.51	-325.34	0.00	
5424.00†	17.954	345.004	5227.92	113.72	1244.29	-333.32	0.00	
5524.00†	17.954	345.004	5323.05	116.44	1274.07	-341.29	0.00	
5624.00†	17.954	345.004	5418.18	119.16	1303.84	-349.27	0.00	



Planned Wellpath Report

WESTWIND 1 (REV-A.0) PWP

Page 4 of 7



REFERENCE WELLPATH IDENTIFICATION

Operator	EXTRACTION OIL & GAS	Slot	SLOT#01 WESTWIND 1(1121'FSL & 251'FWL,SEC.07)
Area	COLORADO	Well	WESTWIND 1
Field	WELD COUNTY (NAD83/TRUE NORTH)	Wellbore	WESTWIND 1 PWB
Facility	SEC.07-T06N-R67W		

WELLPATH DATA (131 stations) † = interpolated/extrapolated station

MD [ft]	Inclination [°]	Azimuth [°]	TVD [ft]	Vert Sect [ft]	North [ft]	East [ft]	DLS [°/100ft]	Comments
5724.00†	17.954	345.004	5513.31	121.88	1333.62	-357.25	0.00	
5824.00†	17.954	345.004	5608.44	124.60	1363.39	-365.22	0.00	
5924.00†	17.954	345.004	5703.57	127.32	1393.17	-373.20	0.00	
6024.00†	17.954	345.004	5798.70	130.04	1422.94	-381.17	0.00	
6124.00†	17.954	345.004	5893.83	132.77	1452.72	-389.15	0.00	
6224.00†	17.954	345.004	5988.96	135.49	1482.50	-397.13	0.00	
6324.00†	17.954	345.004	6084.09	138.21	1512.27	-405.10	0.00	
6424.00†	17.954	345.004	6179.23	140.93	1542.05	-413.08	0.00	
6524.00†	17.954	345.004	6274.36	143.65	1571.82	-421.06	0.00	
6624.00†	17.954	345.004	6369.49	146.37	1601.60	-429.03	0.00	
6664.06	17.954	345.004	6407.60	147.46	1613.53	-432.23	0.00	End of Tangent
6724.00†	17.389	2.742	6464.75	151.75	1631.41	-434.19	9.00	
6824.00†	19.864	30.126	6559.68	170.63	1661.09	-424.93	9.00	
6924.00†	25.371	48.837	6652.08	203.74	1689.95	-400.22	9.00	
7024.00†	32.398	60.576	6739.65	250.25	1717.27	-360.68	9.00	
7124.00†	40.151	68.345	6820.25	309.04	1742.38	-307.27	9.00	
7224.00†	48.276	73.915	6891.89	378.63	1764.66	-241.31	9.00	
7324.00†	56.610	78.213	6952.81	457.34	1783.56	-164.43	9.00	
7424.00†	65.065	81.750	7001.51	543.21	1798.63	-78.52	9.00	
7524.00†	73.594	84.828	7036.78	634.13	1809.48	14.31	9.00	
7624.00†	82.163	87.645	7057.77	727.86	1815.85	111.77	9.00	
7715.27	90.000	90.113	7064.00 ¹	813.91	1817.63	202.74	9.00	End of 3D Arc
7724.00†	90.000	90.113	7064.00	822.10	1817.61	211.47	0.00	
7824.00†	90.000	90.113	7064.00	915.97	1817.41	311.47	0.00	
7924.00†	90.000	90.113	7064.00	1009.84	1817.22	411.47	0.00	
8024.00†	90.000	90.113	7064.00	1103.70	1817.02	511.46	0.00	
8124.00†	90.000	90.113	7064.00	1197.57	1816.82	611.46	0.00	
8224.00†	90.000	90.113	7064.00	1291.43	1816.63	711.46	0.00	
8324.00†	90.000	90.113	7064.00	1385.30	1816.43	811.46	0.00	
8424.00†	90.000	90.113	7064.00	1479.16	1816.23	911.46	0.00	



Planned Wellpath Report

WESTWIND 1 (REV-A.0) PWP

Page 5 of 7



REFERENCE WELLPATH IDENTIFICATION

Operator	EXTRACTION OIL & GAS	Slot	SLOT#01 WESTWIND 1(1121'FSL & 251'FWL,SEC.07)
Area	COLORADO	Well	WESTWIND 1
Field	WELD COUNTY (NAD83/TRUE NORTH)	Wellbore	WESTWIND 1 PWB
Facility	SEC.07-T06N-R67W		

WELLPATH DATA (131 stations) † = interpolated/extrapolated station

MD [ft]	Inclination [°]	Azimuth [°]	TVD [ft]	Vert Sect [ft]	North [ft]	East [ft]	DLS [°/100ft]	Comments
8524.00†	90.000	90.113	7064.00	1573.03	1816.04	1011.46	0.00	
8624.00†	90.000	90.113	7064.00	1666.89	1815.84	1111.46	0.00	
8724.00†	90.000	90.113	7064.00	1760.76	1815.64	1211.46	0.00	
8824.00†	90.000	90.113	7064.00	1854.62	1815.45	1311.46	0.00	
8924.00†	90.000	90.113	7064.00	1948.49	1815.25	1411.46	0.00	
9024.00†	90.000	90.113	7064.00	2042.35	1815.05	1511.46	0.00	
9124.00†	90.000	90.113	7064.00	2136.22	1814.86	1611.46	0.00	
9224.00†	90.000	90.113	7064.00	2230.08	1814.66	1711.46	0.00	
9324.00†	90.000	90.113	7064.00	2323.95	1814.46	1811.46	0.00	
9424.00†	90.000	90.113	7064.00	2417.82	1814.27	1911.46	0.00	
9524.00†	90.000	90.113	7064.00	2511.68	1814.07	2011.46	0.00	
9624.00†	90.000	90.113	7064.00	2605.55	1813.87	2111.46	0.00	
9724.00†	90.000	90.113	7064.00	2699.41	1813.68	2211.46	0.00	
9824.00†	90.000	90.113	7064.00	2793.28	1813.48	2311.46	0.00	
9924.00†	90.000	90.113	7064.00	2887.14	1813.28	2411.46	0.00	
10024.00†	90.000	90.113	7064.00	2981.01	1813.09	2511.46	0.00	
10124.00†	90.000	90.113	7064.00	3074.87	1812.89	2611.46	0.00	
10224.00†	90.000	90.113	7064.00	3168.74	1812.69	2711.46	0.00	
10324.00†	90.000	90.113	7064.00	3262.60	1812.50	2811.46	0.00	
10424.00†	90.000	90.113	7064.00	3356.47	1812.30	2911.46	0.00	
10524.00†	90.000	90.113	7064.00	3450.33	1812.10	3011.46	0.00	
10624.00†	90.000	90.113	7064.00	3544.20	1811.91	3111.46	0.00	
10724.00†	90.000	90.113	7064.00	3638.06	1811.71	3211.46	0.00	
10824.00†	90.000	90.113	7064.00	3731.93	1811.51	3311.46	0.00	
10924.00†	90.000	90.113	7064.00	3825.79	1811.32	3411.46	0.00	
11024.00†	90.000	90.113	7064.00	3919.66	1811.12	3511.46	0.00	
11124.00†	90.000	90.113	7064.00	4013.53	1810.92	3611.46	0.00	
11224.00†	90.000	90.113	7064.00	4107.39	1810.73	3711.46	0.00	
11324.00†	90.000	90.113	7064.00	4201.26	1810.53	3811.46	0.00	
11424.00†	90.000	90.113	7064.00	4295.12	1810.33	3911.46	0.00	



Planned Wellpath Report

WESTWIND 1 (REV-A.0) PWP

Page 6 of 7



REFERENCE WELLPATH IDENTIFICATION

Operator	EXTRACTION OIL & GAS	Slot	SLOT#01 WESTWIND 1(1121'FSL & 251'FWL,SEC.07)
Area	COLORADO	Well	WESTWIND 1
Field	WELD COUNTY (NAD83/TRUE NORTH)	Wellbore	WESTWIND 1 PWB
Facility	SEC.07-T06N-R67W		

WELLPATH DATA (131 stations) † = interpolated/extrapolated station

MD [ft]	Inclination [°]	Azimuth [°]	TVD [ft]	Vert Sect [ft]	North [ft]	East [ft]	DLS [°/100ft]	Comments
11524.00†	90.000	90.113	7064.00	4388.99	1810.14	4011.46	0.00	
11624.00†	90.000	90.113	7064.00	4482.85	1809.94	4111.46	0.00	
11724.00†	90.000	90.113	7064.00	4576.72	1809.74	4211.46	0.00	
11824.00†	90.000	90.113	7064.00	4670.58	1809.55	4311.46	0.00	
11924.00†	90.000	90.113	7064.00	4764.45	1809.35	4411.46	0.00	
12024.00†	90.000	90.113	7064.00	4858.31	1809.15	4511.46	0.00	
12124.00†	90.000	90.113	7064.00	4952.18	1808.96	4611.46	0.00	
12224.00†	90.000	90.113	7064.00	5046.04	1808.76	4711.46	0.00	
12324.00†	90.000	90.113	7064.00	5139.91	1808.56	4811.46	0.00	
12424.00†	90.000	90.113	7064.00	5233.77	1808.37	4911.46	0.00	
12464.43	90.000	90.113	7064.00 ²	5271.72	1808.29	4951.88	0.00	End of Tangent

HOLE & CASING SECTIONS - Ref Wellbore: WESTWIND 1 PWB Ref Wellpath: WESTWIND 1 (REV-A.0) PWP

String/Diameter	Start MD [ft]	End MD [ft]	Interval [ft]	Start TVD [ft]	End TVD [ft]	Start N/S [ft]	Start E/W [ft]	End N/S [ft]	End E/W [ft]
7in Casing Intermediate	24.00	7715.27	7691.27	24.00	7064.00	0.00	0.00	1817.63	202.74



Planned Wellpath Report

WESTWIND 1 (REV-A.0) PWP

Page 7 of 7



REFERENCE WELLPATH IDENTIFICATION			
Operator	EXTRACTION OIL & GAS	Slot	SLOT#01 WESTWIND 1(1121'FSL & 251'FWL,SEC.07)
Area	COLORADO	Well	WESTWIND 1
Field	WELD COUNTY (NAD83/TRUE NORTH)	Wellbore	WESTWIND 1 PWB
Facility	SEC.07-T06N-R67W		

TARGETS									
Name	MD [ft]	TVD [ft]	North [ft]	East [ft]	Grid East [US ft]	Grid North [US ft]	Latitude	Longitude	Shape
SEC.07-T06N-R67W		0.00	0.04	0.00	3154839.47	1424332.30	40°29'48.692"N	104°56'35.682"W	polygon
SEC.08-T06N-R67W		0.00	0.04	0.00	3154839.47	1424332.30	40°29'48.692"N	104°56'35.682"W	polygon
2) WESTWIND 1 BHL ON PLAT REV-1(2442'FNL & 310'FWL,SEC.08)	12464.43	7064.00	1808.29	4951.88	3159779.73	1426171.54	40°30'06.556"N	104°55'31.580"W	point
1) WESTWIND 1 LANDING	7715.27	7064.00	1817.63	202.74	3155030.78	1426151.06	40°30'06.653"N	104°56'33.058"W	point

SURVEY PROGRAM - Ref Wellbore: WESTWIND 1 PWB Ref Wellpath: WESTWIND 1 (REV-A.0) PWP				
Start MD [ft]	End MD [ft]	Positional Uncertainty Model	Log Name/Comment	Wellbore
24.00	13000.00	NaviTrak (Standard)		WESTWIND 1 PWB