

# **BONANZA CREEK ENERGY INC.**

**WELD COUNTY, COLORADO (NAD 83)**

**NW NW SEC. 2 T5N R62W 6th P.M.**

**STATE ANTELOPE A-U-2HNB**

**ORIGINAL WELLBORE**

**19 November, 2014**

**Plan: PROPOSAL #2**





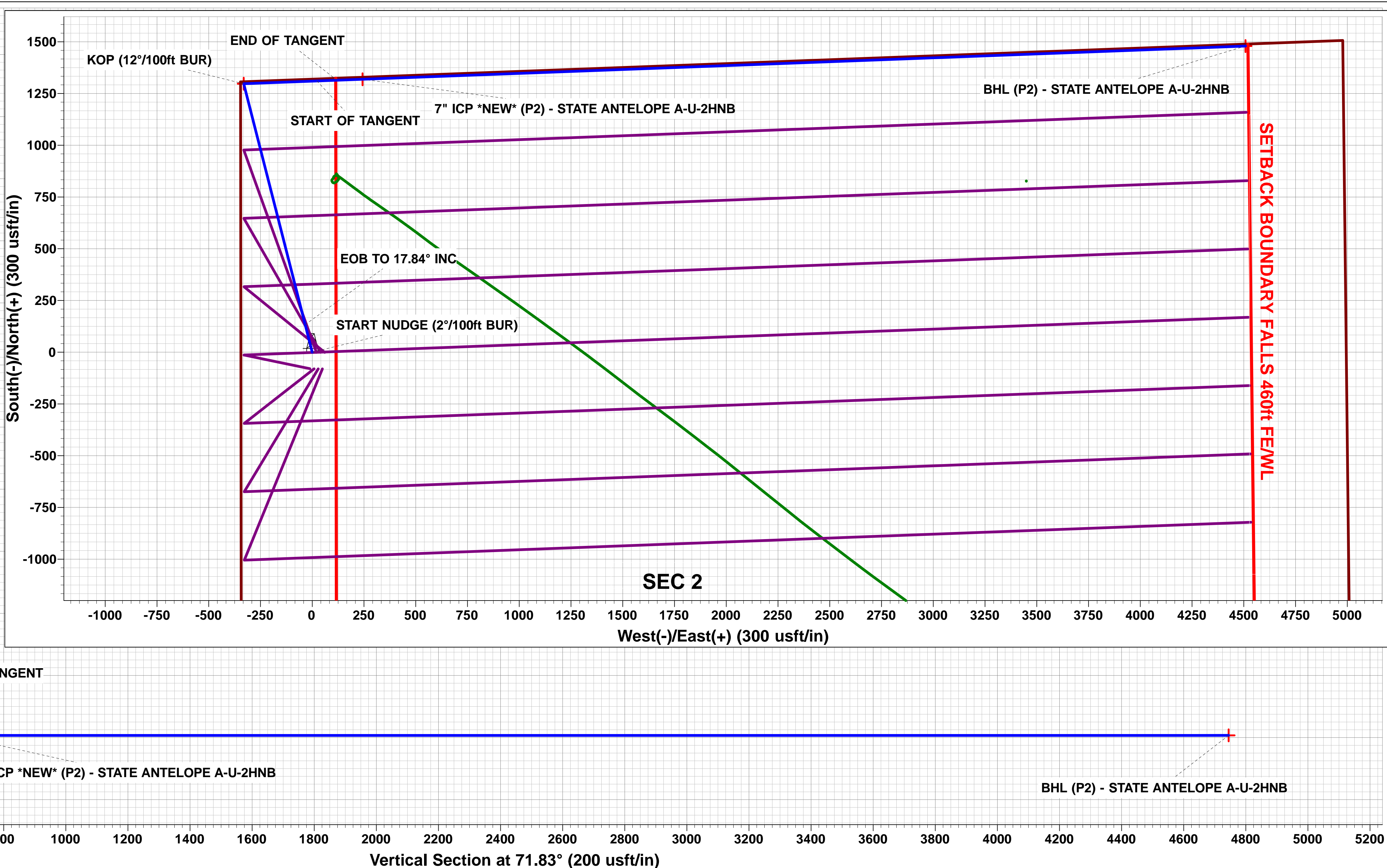
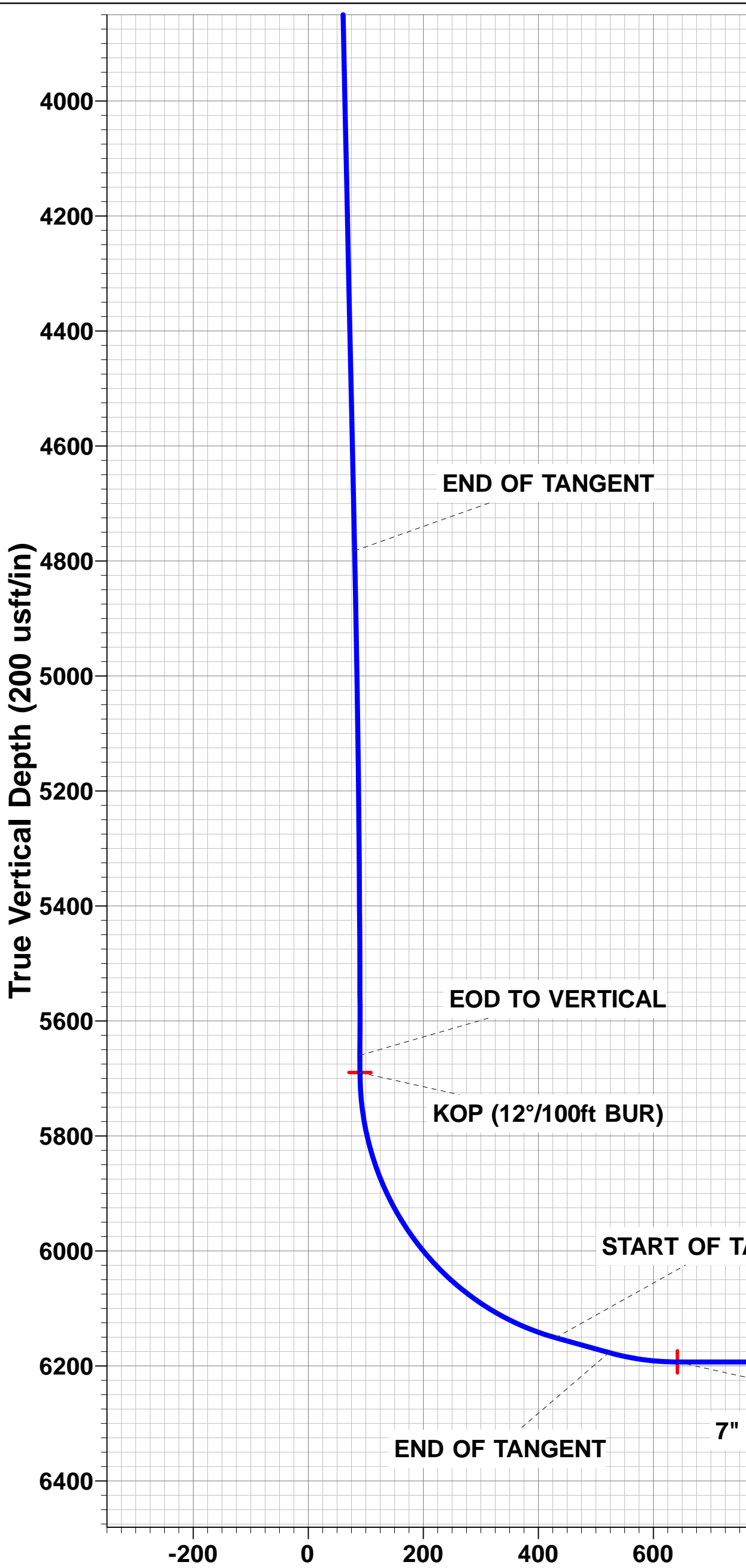
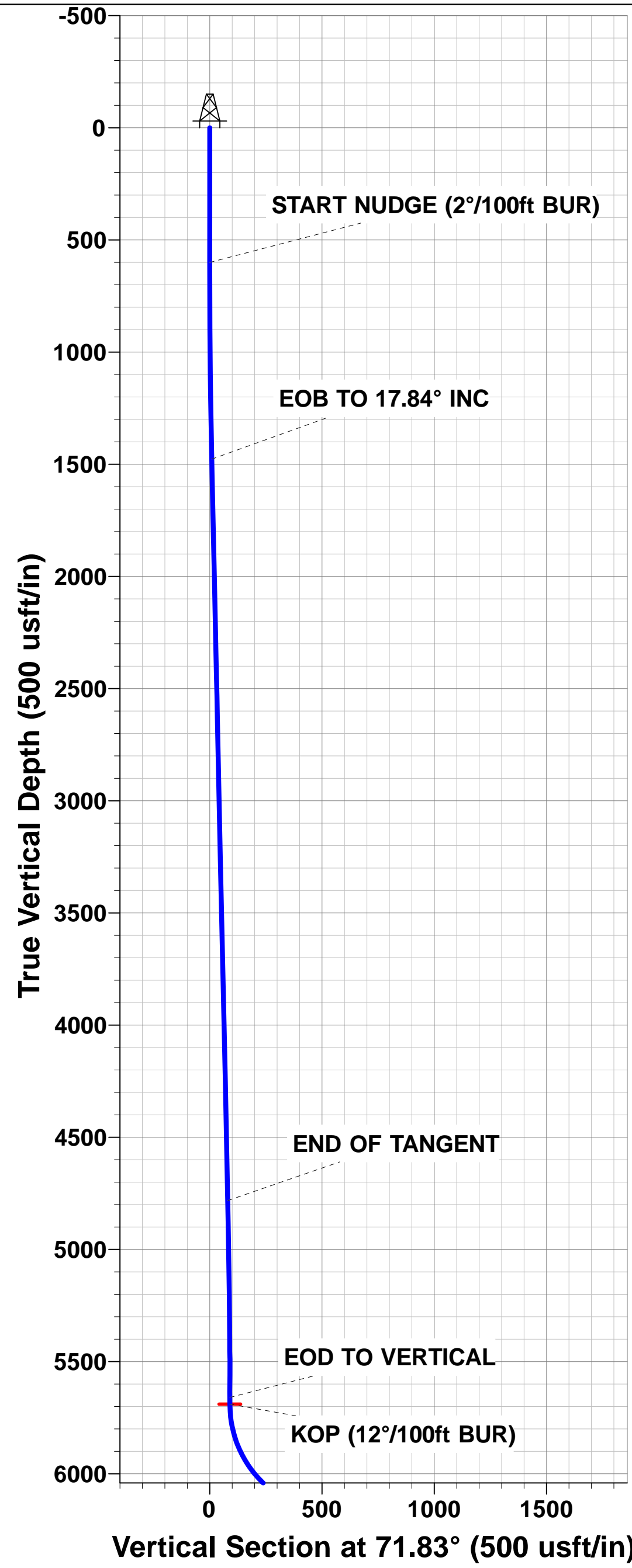
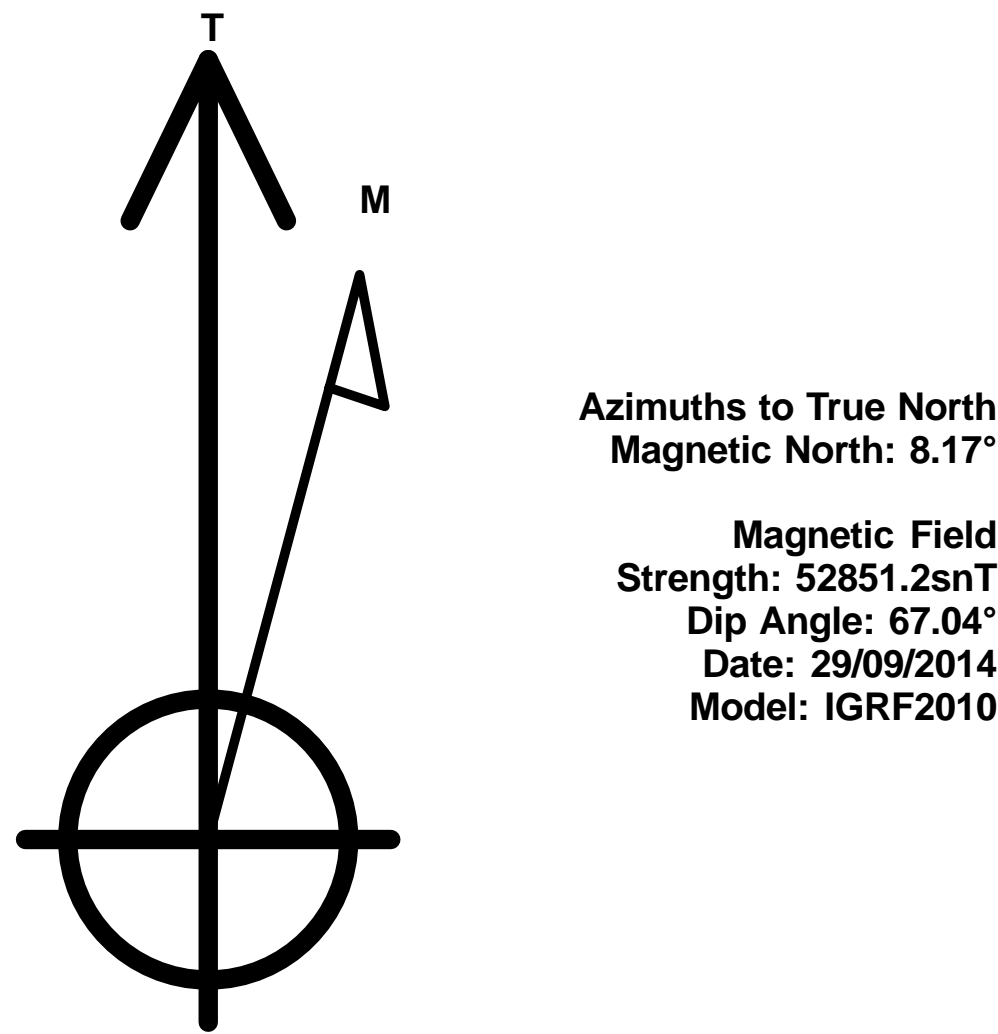
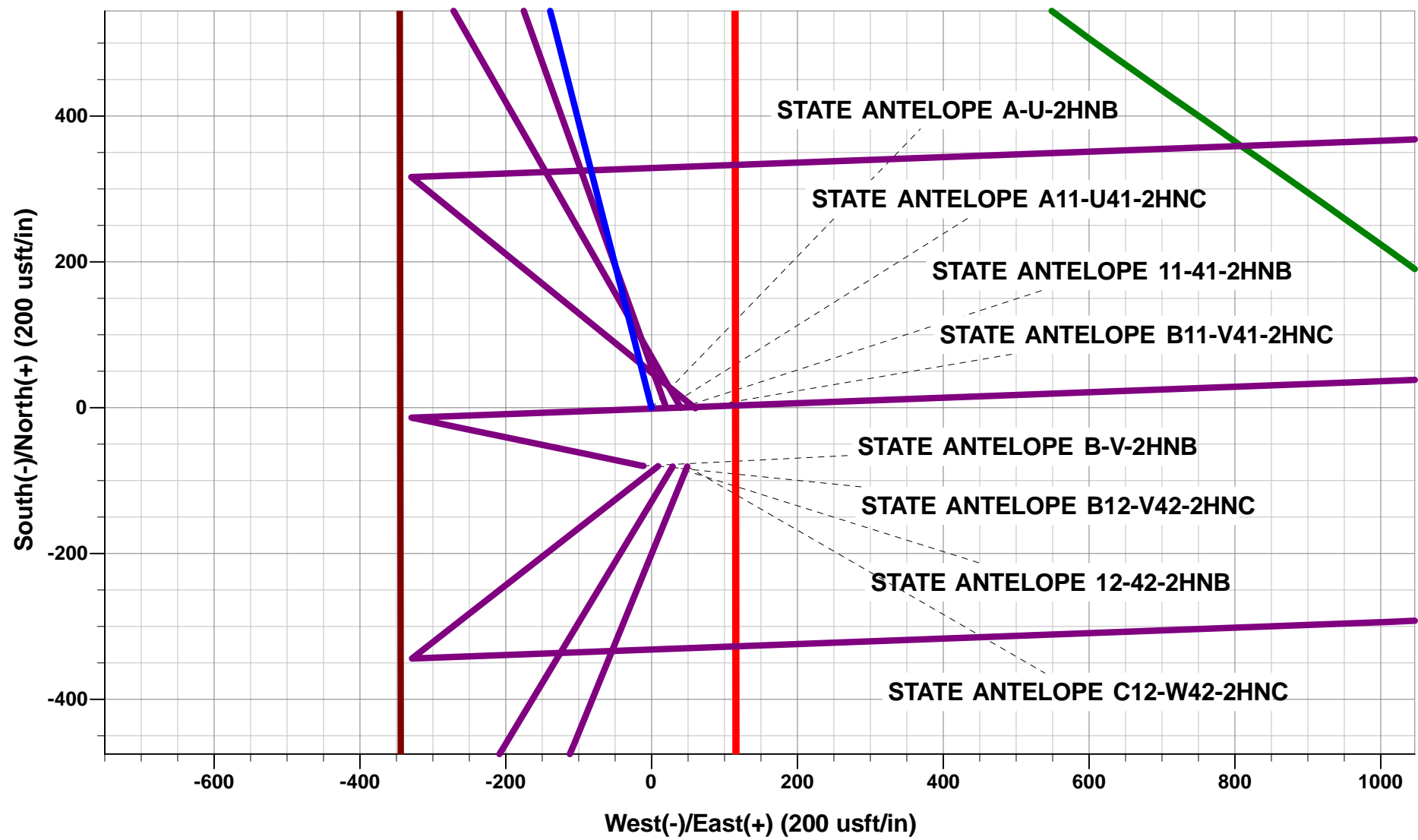
Project: WELD COUNTY, COLORADO (NAD 83)  
Site: NW NW SEC. 2 T5N R62W 6th P.M.  
Well: STATE ANTELOPE A-U-2HNB  
Wellbore: ORIGINAL WELLBORE  
Design: PROPOSAL #2

ANNOTATIONS

TVD	MD	Inc	Azi	+N/-S	+E/-W	VSect	Dep	Annotation
600.0	600.0	0.00	0.00	0.0	0.0	0.0	0.0	START NUDGE (2°/100ft BUR)
1477.5	1491.8	17.84	345.69	133.4	-34.0	9.2	137.7	EOB TO 17.84° INC
4782.4	4963.6	17.84	345.69	1163.8	-297.0	80.7	1201.1	END OF TANGENT
5659.9	5855.4	0.00	345.69	1297.2	-331.0	89.9	1338.8	EOD TO VERTICAL
5689.9	5885.4	0.00	0.00	1297.2	-331.0	89.9	1338.8	KOP (12°/100ft BUR)
6151.1	6510.4	75.00	87.85	1310.5	22.6	430.0	1692.6	START OF TANGENT
6177.0	6610.4	75.00	87.85	1314.1	119.1	522.9	1789.2	END OF TANGENT
6193.2	6735.4	90.00	87.85	1318.7	242.6	641.7	1912.8	7" ICP *NEW* (P2) - STATE ANTELOPE A-U-2HNB
6193.2	11004.0	90.00	87.84	1479.2	4508.2	4744.6	6181.4	BHL (P2) - STATE ANTELOPE A-U-2HNB

WELLBORE TARGET DETAILS (LAT/LONG)

Name	TVD	+N/-S	+E/-W	Latitude	Longitude
KOP (P2) - STATE ANTELOPE A-U-2HNB	5689.9	1297.2	-331.0	40.436705	-104.299988
BHL (P2) - STATE ANTELOPE A-U-2HNB	6193.2	1479.2	4508.2	40.437203	-104.282604
7" ICP *NEW* (P2) - STATE ANTELOPE A-U-2HNB	6193.2	1318.7	242.7	40.436764	-104.297927



# Planning Report



<b>Database:</b>	EDM 5000.1 Single User Db	<b>Local Co-ordinate Reference:</b>	Well STATE ANTELOPE A-U-2HNB
<b>Company:</b>	BONANZA CREEK ENERGY INC.	<b>TVD Reference:</b>	KB-EST @ 4663.2usft (Original Well Elev)
<b>Project:</b>	WELD COUNTY, COLORADO (NAD 83)	<b>MD Reference:</b>	KB-EST @ 4663.2usft (Original Well Elev)
<b>Site:</b>	NW NW SEC. 2 T5N R62W 6th P.M.	<b>North Reference:</b>	True
<b>Well:</b>	STATE ANTELOPE A-U-2HNB	<b>Survey Calculation Method:</b>	Minimum Curvature
<b>Wellbore:</b>	ORIGINAL WELLBORE		
<b>Design:</b>	PROPOSAL #2		

<b>Project</b>	WELD COUNTY, COLORADO (NAD 83)		
<b>Map System:</b>	US State Plane 1983	<b>System Datum:</b>	Mean Sea Level
<b>Geo Datum:</b>	North American Datum 1983		
<b>Map Zone:</b>	Colorado Northern Zone		Using geodetic scale factor

<b>Site</b>	NW NW SEC. 2 T5N R62W 6th P.M.		
<b>Site Position:</b>		<b>Northing:</b>	1,402,899.64 usft
<b>From:</b>	Lat/Long	<b>Easting:</b>	3,334,413.22 usft
<b>Position Uncertainty:</b>	0.0 usft	<b>Slot Radius:</b>	1.10000ft
		<b>Latitude:</b>	40.433143
		<b>Longitude:</b>	-104.298655
		<b>Grid Convergence:</b>	0.78 °

Well	STATE ANTELOPE A-U-2HNB					
Well Position	+N/-S	0.4 usft	Northing:	1,402,899.45 usft	Latitude:	40.433144
	+E/-W	-40.1 usft	Easting:	3,334,373.13 usft	Longitude:	-104.298799
Position Uncertainty		0.0 usft	Wellhead Elevation:	usft	Ground Level:	4,646.2 usft

<b>Wellbore</b>	ORIGINAL WELLBORE				
<b>Magnetics</b>	<b>Model Name</b>	<b>Sample Date</b>	<b>Declination (°)</b>	<b>Dip Angle (°)</b>	<b>Field Strength (nT)</b>
	IGRF2010	29/09/2014	8.17	67.04	52,851

<b>Design</b>	PROPOSAL #2			
<b>Audit Notes:</b>				
<b>Version:</b>	<b>Phase:</b>	PROTOTYPE	<b>Tie On Depth:</b>	0.0
<b>Vertical Section:</b>	<b>Depth From (TVD) (usft)</b>	<b>+N/-S (usft)</b>	<b>+E/-W (usft)</b>	<b>Direction (°)</b>
	6,193.2	0.0	0.0	71.83

<b>Plan Sections</b>											
MD (usft)	Inc (°)	Azi (°)	Vertical Depth	SS (usft)	+N/-S (usft)	+E/-W (usft)	Dogleg Rate (°/100usf)	Build Rate (°/100usf)	Turn Rate (°/100usf)	TFO (°)	Target
0.0	0.00	0.00	0.0	-4,663.2	0.0	0.0	0.00	0.00	0.00	0.00	
600.0	0.00	0.00	600.0	-4,063.2	0.0	0.0	0.00	0.00	0.00	0.00	
1,491.8	17.84	345.69	1,477.5	-3,185.7	133.4	-34.0	2.00	2.00	0.00	345.69	
4,963.6	17.84	345.69	4,782.4	119.2	1,163.8	-297.0	0.00	0.00	0.00	0.00	
5,855.4	0.00	0.00	5,659.9	996.7	1,297.2	-331.0	2.00	-2.00	0.00	180.00	
5,885.4	0.00	0.00	5,689.9	1,026.7	1,297.2	-331.0	0.00	0.00	0.00	0.00	KOP (P2) - STATE
6,510.4	75.00	87.85	6,151.1	1,487.9	1,310.5	22.6	12.00	12.00	0.00	87.85	
6,610.4	75.00	87.85	6,177.0	1,513.8	1,314.1	119.2	0.00	0.00	0.00	0.00	
6,735.4	90.00	87.85	6,193.2	1,530.0	1,318.7	242.7	12.00	12.00	0.00	0.00	
11,004.0	90.00	87.84	6,193.2	1,530.0	1,479.2	4,508.2	0.00	0.00	0.00	-81.13	BHL (P2) - STATE

# Planning Report



<b>Database:</b>	EDM 5000.1 Single User Db	<b>Local Co-ordinate Reference:</b>	Well STATE ANTELOPE A-U-2HNB
<b>Company:</b>	BONANZA CREEK ENERGY INC.	<b>TVD Reference:</b>	KB-EST @ 4663.2usft (Original Well Elev)
<b>Project:</b>	WELD COUNTY, COLORADO (NAD 83)	<b>MD Reference:</b>	KB-EST @ 4663.2usft (Original Well Elev)
<b>Site:</b>	NW NW SEC. 2 T5N R62W 6th P.M.	<b>North Reference:</b>	True
<b>Well:</b>	STATE ANTELOPE A-U-2HNB	<b>Survey Calculation Method:</b>	Minimum Curvature
<b>Wellbore:</b>	ORIGINAL WELLBORE		
<b>Design:</b>	PROPOSAL #2		

## Planned Survey

MD (usft)	Inc (°)	Azi (°)	TVD (usft)	SS (usft)	+N/-S (usft)	+E/-W (usft)	Vertical Section (usft)	Dogleg Rate (°/100usft)	Build Rate (°/100usft)	Turn Rate (°/100usft)
0.0	0.00	0.00	0.0	4,663.20	0.0	0.0	0.0	0.00	0.00	0.00
100.0	0.00	0.00	100.0	4,563.20	0.0	0.0	0.0	0.00	0.00	0.00
200.0	0.00	0.00	200.0	4,463.20	0.0	0.0	0.0	0.00	0.00	0.00
300.0	0.00	0.00	300.0	4,363.20	0.0	0.0	0.0	0.00	0.00	0.00
400.0	0.00	0.00	400.0	4,263.20	0.0	0.0	0.0	0.00	0.00	0.00
500.0	0.00	0.00	500.0	4,163.20	0.0	0.0	0.0	0.00	0.00	0.00
<b>START NUDGE (2°/100ft BUR)</b>										
600.0	0.00	0.00	600.0	4,063.20	0.0	0.0	0.0	0.00	0.00	0.00
700.0	2.00	345.69	700.0	3,963.22	1.7	-0.4	0.1	2.00	2.00	0.00
800.0	4.00	345.69	799.8	3,863.36	6.8	-1.7	0.5	2.00	2.00	0.00
900.0	6.00	345.69	899.5	3,763.75	15.2	-3.9	1.1	2.00	2.00	0.00
1,000.0	8.00	345.69	998.7	3,664.50	27.0	-6.9	1.9	2.00	2.00	0.00
1,100.0	10.00	345.69	1,097.5	3,565.73	42.2	-10.8	2.9	2.00	2.00	0.00
1,200.0	12.00	345.69	1,195.6	3,467.58	60.7	-15.5	4.2	2.00	2.00	0.00
1,300.0	14.00	345.69	1,293.1	3,370.14	82.5	-21.0	5.7	2.00	2.00	0.00
1,400.0	16.00	345.69	1,389.6	3,273.56	107.5	-27.4	7.5	2.00	2.00	0.00
<b>EOB TO 17.84° INC</b>										
1,491.8	17.84	345.69	1,477.5	3,185.73	133.4	-34.0	9.2	2.00	2.00	0.00
1,500.0	17.84	345.69	1,485.3	3,177.93	135.8	-34.7	9.4	0.00	0.00	0.00
1,600.0	17.84	345.69	1,580.5	3,082.73	165.5	-42.2	11.5	0.00	0.00	0.00
1,700.0	17.84	345.69	1,675.7	2,987.54	195.2	-49.8	13.5	0.00	0.00	0.00
1,800.0	17.84	345.69	1,770.9	2,892.35	224.9	-57.4	15.6	0.00	0.00	0.00
1,900.0	17.84	345.69	1,866.0	2,797.15	254.6	-65.0	17.6	0.00	0.00	0.00
2,000.0	17.84	345.69	1,961.2	2,701.96	284.2	-72.5	19.7	0.00	0.00	0.00
2,100.0	17.84	345.69	2,056.4	2,606.76	313.9	-80.1	21.8	0.00	0.00	0.00
2,200.0	17.84	345.69	2,151.6	2,511.57	343.6	-87.7	23.8	0.00	0.00	0.00
2,300.0	17.84	345.69	2,246.8	2,416.38	373.3	-95.2	25.9	0.00	0.00	0.00
2,400.0	17.84	345.69	2,342.0	2,321.18	403.0	-102.8	27.9	0.00	0.00	0.00
2,500.0	17.84	345.69	2,437.2	2,225.99	432.6	-110.4	30.0	0.00	0.00	0.00
2,600.0	17.84	345.69	2,532.4	2,130.80	462.3	-118.0	32.0	0.00	0.00	0.00
2,700.0	17.84	345.69	2,627.6	2,035.60	492.0	-125.5	34.1	0.00	0.00	0.00
2,800.0	17.84	345.69	2,722.8	1,940.41	521.7	-133.1	36.2	0.00	0.00	0.00
2,900.0	17.84	345.69	2,818.0	1,845.21	551.3	-140.7	38.2	0.00	0.00	0.00
3,000.0	17.84	345.69	2,913.2	1,750.02	581.0	-148.3	40.3	0.00	0.00	0.00
3,100.0	17.84	345.69	3,008.4	1,654.83	610.7	-155.8	42.3	0.00	0.00	0.00
3,200.0	17.84	345.69	3,103.6	1,559.63	640.4	-163.4	44.4	0.00	0.00	0.00
3,300.0	17.84	345.69	3,198.8	1,464.44	670.1	-171.0	46.4	0.00	0.00	0.00
3,400.0	17.84	345.69	3,294.0	1,369.24	699.7	-178.5	48.5	0.00	0.00	0.00
3,500.0	17.84	345.69	3,389.1	1,274.05	729.4	-186.1	50.6	0.00	0.00	0.00
3,600.0	17.84	345.69	3,484.3	1,178.86	759.1	-193.7	52.6	0.00	0.00	0.00
3,700.0	17.84	345.69	3,579.5	1,083.66	788.8	-201.3	54.7	0.00	0.00	0.00
3,800.0	17.84	345.69	3,674.7	988.47	818.4	-208.8	56.7	0.00	0.00	0.00
3,900.0	17.84	345.69	3,769.9	893.28	848.1	-216.4	58.8	0.00	0.00	0.00
4,000.0	17.84	345.69	3,865.1	798.08	877.8	-224.0	60.8	0.00	0.00	0.00
4,100.0	17.84	345.69	3,960.3	702.89	907.5	-231.6	62.9	0.00	0.00	0.00
4,200.0	17.84	345.69	4,055.5	607.69	937.2	-239.1	65.0	0.00	0.00	0.00
4,300.0	17.84	345.69	4,150.7	512.50	966.8	-246.7	67.0	0.00	0.00	0.00
4,400.0	17.84	345.69	4,245.9	417.31	996.5	-254.3	69.1	0.00	0.00	0.00
4,500.0	17.84	345.69	4,341.1	322.11	1,026.2	-261.8	71.1	0.00	0.00	0.00
4,600.0	17.84	345.69	4,436.3	226.92	1,055.9	-269.4	73.2	0.00	0.00	0.00
4,700.0	17.84	345.69	4,531.5	131.72	1,085.5	-277.0	75.2	0.00	0.00	0.00
4,800.0	17.84	345.69	4,626.7	36.53	1,115.2	-284.6	77.3	0.00	0.00	0.00
4,900.0	17.84	345.69	4,721.9	-58.66	1,144.9	-292.1	79.4	0.00	0.00	0.00

# Planning Report



<b>Database:</b>	EDM 5000.1 Single User Db	<b>Local Co-ordinate Reference:</b>	Well STATE ANTELOPE A-U-2HNB
<b>Company:</b>	BONANZA CREEK ENERGY INC.	<b>TVD Reference:</b>	KB-EST @ 4663.2usft (Original Well Elev)
<b>Project:</b>	WELD COUNTY, COLORADO (NAD 83)	<b>MD Reference:</b>	KB-EST @ 4663.2usft (Original Well Elev)
<b>Site:</b>	NW NW SEC. 2 T5N R62W 6th P.M.	<b>North Reference:</b>	True
<b>Well:</b>	STATE ANTELOPE A-U-2HNB	<b>Survey Calculation Method:</b>	Minimum Curvature
<b>Wellbore:</b>	ORIGINAL WELLBORE		
<b>Design:</b>	PROPOSAL #2		

Planned Survey										
MD (usft)	Inc (°)	Azi (°)	TVD (usft)	SS (usft)	+N/-S (usft)	+E/-W (usft)	Vertical Section (usft)	Dogleg Rate (°/100usft)	Build Rate (°/100usft)	Turn Rate (°/100usft)
<b>END OF TANGENT</b>										
4,963.6	17.84	345.69	4,782.4	-119.21	1,163.8	-297.0	80.7	0.00	0.00	0.00
5,000.0	17.11	345.69	4,817.1	-153.93	1,174.4	-299.7	81.4	2.00	-2.00	0.00
5,100.0	15.11	345.69	4,913.2	-250.00	1,201.2	-306.5	83.3	2.00	-2.00	0.00
5,200.0	13.11	345.69	5,010.2	-346.97	1,224.9	-312.5	84.9	2.00	-2.00	0.00
5,300.0	11.11	345.69	5,107.9	-444.74	1,245.2	-317.7	86.3	2.00	-2.00	0.00
5,400.0	9.11	345.69	5,206.4	-543.19	1,262.2	-322.1	87.5	2.00	-2.00	0.00
5,500.0	7.11	345.69	5,305.4	-642.18	1,275.9	-325.6	88.4	2.00	-2.00	0.00
5,600.0	5.11	345.69	5,404.8	-741.61	1,286.2	-328.2	89.1	2.00	-2.00	0.00
5,700.0	3.11	345.69	5,504.5	-841.35	1,293.1	-330.0	89.6	2.00	-2.00	0.00
5,800.0	1.11	345.69	5,604.5	-941.27	1,296.7	-330.9	89.9	2.00	-2.00	0.00
<b>EOD TO VERTICAL</b>										
5,855.4	0.00	345.69	5,659.9	-996.67	1,297.2	-331.0	89.9	2.00	-2.00	0.00
<b>KOP (12°/100ft BUR)</b>										
5,885.4	0.00	0.00	5,689.9	-1,026.67	1,297.2	-331.0	89.9	0.00	0.00	0.00
5,900.0	1.75	87.85	5,704.5	-1,041.27	1,297.2	-330.8	90.1	11.98	11.98	0.00
6,000.0	13.75	87.85	5,803.4	-1,140.17	1,297.7	-317.3	103.1	12.00	12.00	0.00
6,100.0	25.75	87.85	5,897.3	-1,234.12	1,299.0	-283.6	135.5	12.00	12.00	0.00
6,200.0	37.75	87.85	5,982.2	-1,319.00	1,300.9	-231.1	186.0	12.00	12.00	0.00
6,300.0	49.75	87.85	6,054.3	-1,391.11	1,303.5	-162.2	252.3	12.00	12.00	0.00
6,400.0	61.75	87.85	6,110.5	-1,447.29	1,306.6	-79.7	331.6	12.00	12.00	0.00
6,500.0	73.75	87.85	6,148.3	-1,485.09	1,310.1	12.6	420.4	12.00	12.00	0.00
<b>START OF TANGENT</b>										
6,510.4	75.00	87.85	6,151.1	-1,487.89	1,310.5	22.6	430.0	12.00	12.00	0.00
6,600.0	75.00	87.85	6,174.3	-1,511.08	1,313.7	109.1	513.2	0.00	0.00	0.00
<b>END OF TANGENT</b>										
6,610.4	75.00	87.85	6,177.0	-1,513.77	1,314.1	119.1	522.9	0.00	0.00	0.00
6,700.0	85.75	87.85	6,191.9	-1,528.73	1,317.4	207.3	607.7	12.00	12.00	0.00
<b>7" ICP *NEW* (P2) - STATE ANTELOPE A-U-2HNB</b>										
6,735.4	90.00	87.85	6,193.2	-1,530.05	1,318.7	242.6	641.7	12.00	12.00	0.00
6,800.0	90.00	87.85	6,193.2	-1,530.05	1,321.2	307.2	703.8	0.01	0.01	0.00
6,900.0	90.00	87.85	6,193.2	-1,530.05	1,324.9	407.1	799.9	0.00	0.00	0.00
7,000.0	90.00	87.85	6,193.2	-1,530.05	1,328.7	507.0	896.0	0.00	0.00	0.00
7,100.0	90.00	87.85	6,193.2	-1,530.05	1,332.4	607.0	992.1	0.00	0.00	0.00
7,200.0	90.00	87.85	6,193.2	-1,530.05	1,336.2	706.9	1,088.2	0.00	0.00	0.00
7,300.0	90.00	87.85	6,193.2	-1,530.05	1,339.9	806.8	1,184.3	0.00	0.00	0.00
7,400.0	90.00	87.85	6,193.2	-1,530.05	1,343.7	906.8	1,280.5	0.00	0.00	0.00
7,500.0	90.00	87.85	6,193.2	-1,530.05	1,347.4	1,006.7	1,376.6	0.00	0.00	0.00
7,600.0	90.00	87.85	6,193.2	-1,530.04	1,351.2	1,106.6	1,472.7	0.00	0.00	0.00
7,700.0	90.00	87.85	6,193.2	-1,530.04	1,354.9	1,206.5	1,568.8	0.00	0.00	0.00
7,800.0	90.00	87.85	6,193.2	-1,530.04	1,358.7	1,306.5	1,664.9	0.00	0.00	0.00
7,900.0	90.00	87.85	6,193.2	-1,530.04	1,362.4	1,406.4	1,761.1	0.00	0.00	0.00
8,000.0	90.00	87.85	6,193.2	-1,530.04	1,366.2	1,506.3	1,857.2	0.00	0.00	0.00
8,100.0	90.00	87.85	6,193.2	-1,530.04	1,370.0	1,606.3	1,953.3	0.00	0.00	0.00
8,200.0	90.00	87.85	6,193.2	-1,530.04	1,373.7	1,706.2	2,049.4	0.00	0.00	0.00
8,300.0	90.00	87.85	6,193.2	-1,530.04	1,377.5	1,806.1	2,145.5	0.00	0.00	0.00
8,400.0	90.00	87.85	6,193.2	-1,530.04	1,381.2	1,906.1	2,241.7	0.00	0.00	0.00
8,500.0	90.00	87.85	6,193.2	-1,530.04	1,385.0	2,006.0	2,337.8	0.00	0.00	0.00
8,600.0	90.00	87.85	6,193.2	-1,530.04	1,388.7	2,105.9	2,433.9	0.00	0.00	0.00
8,700.0	90.00	87.85	6,193.2	-1,530.04	1,392.5	2,205.8	2,530.0	0.00	0.00	0.00
8,800.0	90.00	87.85	6,193.2	-1,530.04	1,396.3	2,305.8	2,626.1	0.00	0.00	0.00
8,900.0	90.00	87.85	6,193.2	-1,530.03	1,400.0	2,405.7	2,722.3	0.00	0.00	0.00
9,000.0	90.00	87.85	6,193.2	-1,530.03	1,403.8	2,505.6	2,818.4	0.00	0.00	0.00



# Planning Report



<b>Database:</b>	EDM 5000.1 Single User Db	<b>Local Co-ordinate Reference:</b>	Well STATE ANTELOPE A-U-2HNB
<b>Company:</b>	BONANZA CREEK ENERGY INC.	<b>TVD Reference:</b>	KB-EST @ 4663.2usft (Original Well Elev)
<b>Project:</b>	WELD COUNTY, COLORADO (NAD 83)	<b>MD Reference:</b>	KB-EST @ 4663.2usft (Original Well Elev)
<b>Site:</b>	NW NW SEC. 2 T5N R62W 6th P.M.	<b>North Reference:</b>	True
<b>Well:</b>	STATE ANTELOPE A-U-2HNB	<b>Survey Calculation Method:</b>	Minimum Curvature
<b>Wellbore:</b>	ORIGINAL WELLBORE		
<b>Design:</b>	PROPOSAL #2		

Planned Survey										
MD (usft)	Inc (°)	Azi (°)	TVD (usft)	SS (usft)	+N/-S (usft)	+E/-W (usft)	Vertical Section (usft)	Dogleg Rate (°/100usft)	Build Rate (°/100usft)	Turn Rate (°/100usft)
9,100.0	90.00	87.85	6,193.2	-1,530.03	1,407.5	2,605.6	2,914.5	0.00	0.00	0.00
9,200.0	90.00	87.85	6,193.2	-1,530.03	1,411.3	2,705.5	3,010.6	0.00	0.00	0.00
9,300.0	90.00	87.85	6,193.2	-1,530.03	1,415.1	2,805.4	3,106.8	0.00	0.00	0.00
9,400.0	90.00	87.84	6,193.2	-1,530.03	1,418.8	2,905.3	3,202.9	0.00	0.00	0.00
9,500.0	90.00	87.84	6,193.2	-1,530.03	1,422.6	3,005.3	3,299.0	0.00	0.00	0.00
9,600.0	90.00	87.84	6,193.2	-1,530.03	1,426.3	3,105.2	3,395.1	0.00	0.00	0.00
9,700.0	90.00	87.84	6,193.2	-1,530.02	1,430.1	3,205.1	3,491.2	0.00	0.00	0.00
9,800.0	90.00	87.84	6,193.2	-1,530.02	1,433.9	3,305.1	3,587.4	0.00	0.00	0.00
9,900.0	90.00	87.84	6,193.2	-1,530.02	1,437.6	3,405.0	3,683.5	0.00	0.00	0.00
10,000.0	90.00	87.84	6,193.2	-1,530.02	1,441.4	3,504.9	3,779.6	0.00	0.00	0.00
10,100.0	90.00	87.84	6,193.2	-1,530.02	1,445.1	3,604.8	3,875.7	0.00	0.00	0.00
10,200.0	90.00	87.84	6,193.2	-1,530.02	1,448.9	3,704.8	3,971.8	0.00	0.00	0.00
10,300.0	90.00	87.84	6,193.2	-1,530.01	1,452.7	3,804.7	4,068.0	0.00	0.00	0.00
10,400.0	90.00	87.84	6,193.2	-1,530.01	1,456.4	3,904.6	4,164.1	0.00	0.00	0.00
10,500.0	90.00	87.84	6,193.2	-1,530.01	1,460.2	4,004.6	4,260.2	0.00	0.00	0.00
10,600.0	90.00	87.84	6,193.2	-1,530.01	1,464.0	4,104.5	4,356.3	0.00	0.00	0.00
10,700.0	90.00	87.84	6,193.2	-1,530.01	1,467.7	4,204.4	4,452.5	0.00	0.00	0.00
10,800.0	90.00	87.84	6,193.2	-1,530.00	1,471.5	4,304.4	4,548.6	0.00	0.00	0.00
10,900.0	90.00	87.84	6,193.2	-1,530.00	1,475.3	4,404.3	4,644.7	0.00	0.00	0.00
11,000.0	90.00	87.84	6,193.2	-1,530.00	1,479.0	4,504.2	4,740.8	0.00	0.00	0.00
<b>BHL (P2) - STATE ANTELOPE A-U-2HNB</b>										
<b>11,004.0</b>	<b>90.00</b>	<b>87.84</b>	<b>6,193.2</b>	<b>-1,530.00</b>	<b>1,479.2</b>	<b>4,508.2</b>	<b>4,744.6</b>	<b>0.01</b>	<b>0.00</b>	<b>0.00</b>

Plan Annotations				
MD (usft)	TVD (usft)	Local Coordinates		Comment
		+N/-S (usft)	+E/-W (usft)	
600.0	600.0	0.0	0.0	START NUDGE (2°/100ft BUR)
1,491.8	1,477.5	133.4	-34.0	EOB TO 17.84° INC
4,963.6	4,782.4	1,163.8	-297.0	END OF TANGENT
5,855.4	5,659.9	1,297.2	-331.0	EOD TO VERTICAL
5,885.4	5,689.9	1,297.2	-331.0	KOP (12°/100ft BUR)
6,510.4	6,151.1	1,310.5	22.6	START OF TANGENT
6,610.4	6,177.0	1,314.1	119.1	END OF TANGENT
6,735.4	6,193.2	1,318.7	242.6	7" ICP *NEW* (P2) - STATE ANTELOPE A-U-2HNB
11,004.0	6,193.2	1,479.2	4,508.2	BHL (P2) - STATE ANTELOPE A-U-2HNB