



410 17th Street, Suite 1500  
Denver, CO 80202  
(720) 440-6100 phone  
(720) 305-0804 fax

[Bonanzacrk.com](http://Bonanzacrk.com)

01 December 2014

Colorado Oil and Gas Conservation  
Commission  
The Chancery Building  
1120 Lincoln Street, Suite 801  
Denver, CO 80203

Attn: Mr. Matt Lepore, Director

Re: Notice of 318A.a.(4)D. Horizontal Wellbore Spacing Unit Proposal  
State Antelope A-U-2HNB  
SHL: Lot 4 (1319' FNL, 345' FWL) Sec 02-5N-62W, 6<sup>TH</sup> PM  
Top of Production: Lot 4 (10' FNL, 631' FWL) Sec 02-5N-62W, 6<sup>TH</sup> PM  
Bottom of Production: Lot 1 (10' FNL, 470' FEL) Sec 02-5N-62W, 6<sup>TH</sup> PM  
Weld County, Colorado

Mr. Lepore:

Bonanza Creek Energy, Inc. (Bonanza) intends to permit, drill and operate the referenced Niobrara Fm. Horizontal Well. As defined by Colorado Oil and Gas Conservation Commission (COGCC) Rule 318A.a.(4)D., Bonanza proposes the following wellbore spacing unit:

Lots 1-4 Sec 02-T5N-R62W and S/2S/2 Sec 35-T6N-R62W, Weld County, CO. – 320 Acres

Bonanza has notified the other owners in the unit and has received one objection. Bonanza is diligently working with the owner to achieve resolution of the objection; even though the objection was issued greater than 30 days from the owner's receipt of the notice. Mrs. Jane Stanczyk has been provided copies of the notice and certified mail receipt under separate cover. Copies of the notifications are maintained in Bonanza's files.

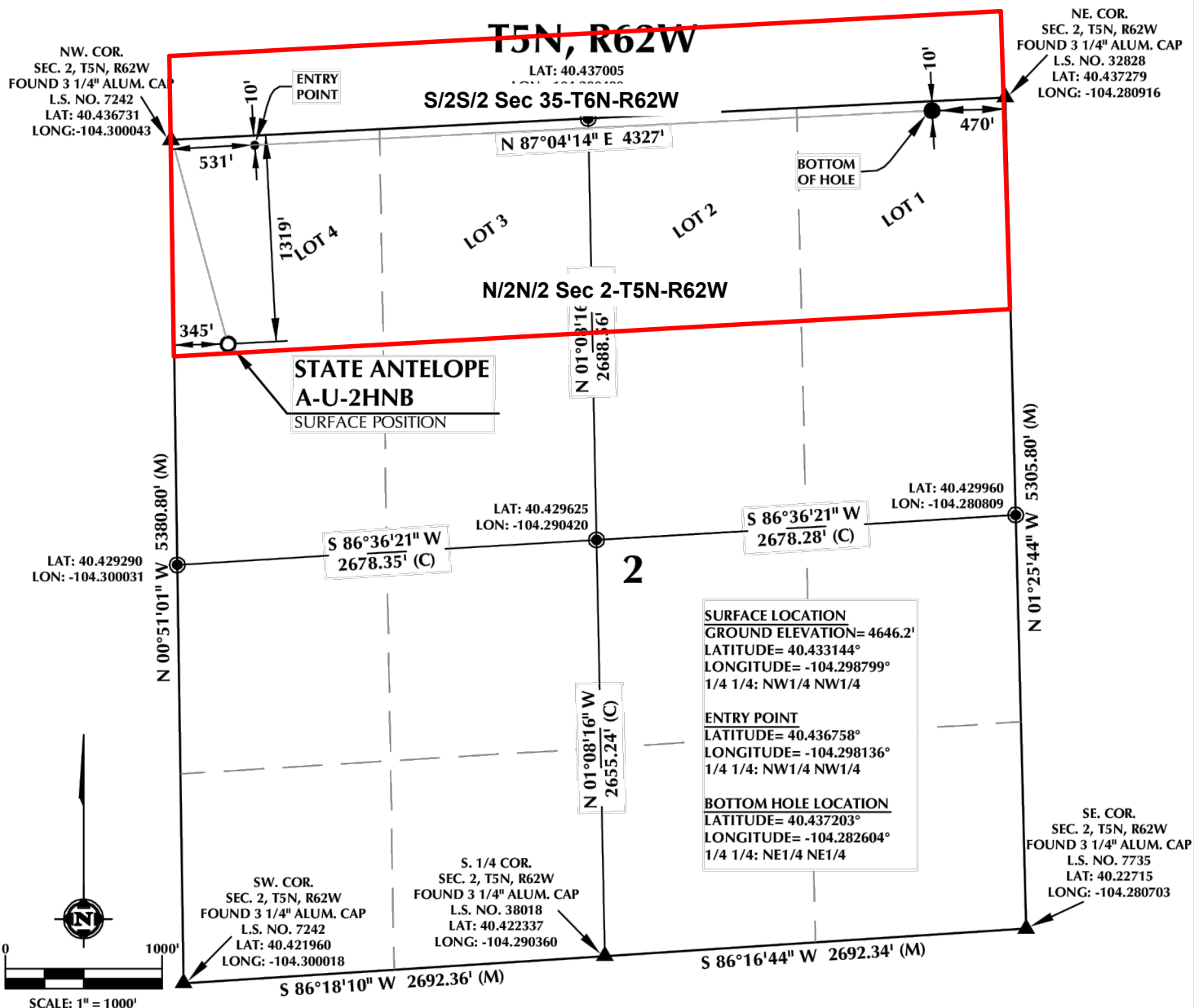
Bonanza respectfully requests that you review the enclosed wellbore spacing unit documentation and approve the referenced APD, pending the resolution of the outstanding objection regarding the same.

Please do not hesitate to call or email me, directly, at (720) 440-6112 or [kcaplan@bonanzacrk.com](mailto:kcaplan@bonanzacrk.com), should you have any questions pertaining to this matter.

Thank you for your cooperation.

Sincerely,  
BONANZA CREEK ENERGY, INC.  
BONANZA CREEK ENERGY OPERATING COMPANY, LLC

Keith S. Caplan  
Sr. Regulatory Specialist



#### CERTIFICATE OF SURVEYOR:

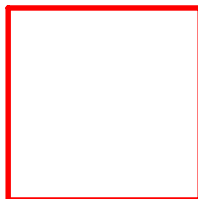
THIS IS TO CERTIFY THAT THE ABOVE PLAT WAS PREPARED FROM FIELD NOTES OF ACTUAL SURVEY MADE BY ME OR UNDER MY SUPERVISION AND THAT THE SAME ARE TRUE AND CORRECT.

#### NEAREST CULTURAL ITEMS:

BUILDING: 5280'+  
BUILDING UNIT: 5280'+  
HIGH OCCUPANCY BUILDING UNIT: 5280'+

#### NOTES:

1. ▲ INDICATES FOUND SECTION CORNER
2. ● INDICATES CALCULATED CORNER
3. DRAWING LATITUDE AND LONGITUDE COORDINATES ARE NAD83 (2011)(EPOCH:2010)
4. ELEVATION BASED ON NAVD88 (GEOID09)



Wellbore Spacing Unit Outline



## Wellbore Spacing Unit Map

07 October 2014 ksc

State Antelope A-U-2HNB  
Lots 1-4 Sec 2-T5N-R62W 6th PM  
S/2S/2 Sec 35-T6N-R62W 6th PM  
Weld County, Colorado