

05-103-06267



Chevron
U.S.A., Inc.

WELL NO.: U.P. 67-32
(3633)
FIELD : RANGELY, CO.

SURVEY DATA

REMARKS

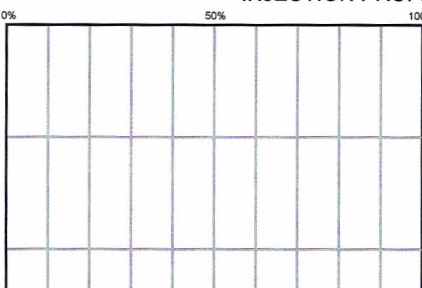
RUN NO. 18			REMARKS
SURVEY TYPE	T-S-T	SURFACE TEMP	
DATE	10/24/2014	BHT	
METERED RATE	N/A	TBG PRESSURE	
MEASURED RATE	160 B/D	CSG PRESSURE	
DESIRED RATE	N/A	PICK-UP	
SERVICE CO.	PLS	INJ. FLUID	H2O

R/A TRACER INDICATES TOP PERF AND PACKERS OK.
RECORDED BY: MATT STRATTON
10/23/14, RAN 1.75" G/R TO 5963'; DID NOT ATTEMPT TO GET ANY DEEPER.

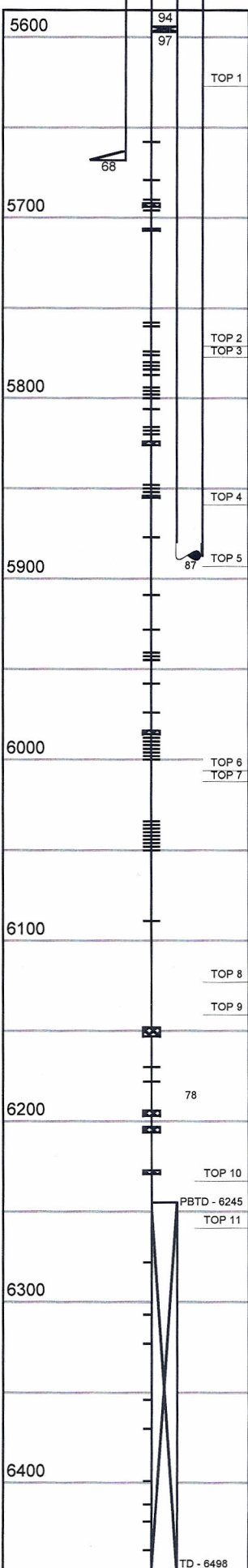
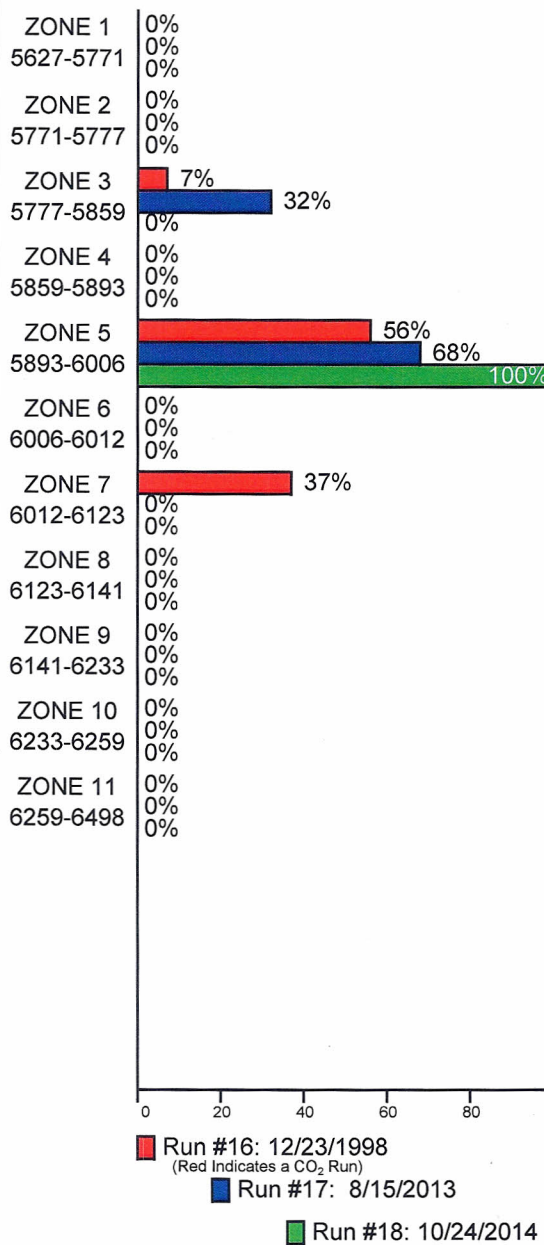
MECHANICAL INFORMATION

7" 23# CASING	0-5668'
5" 18# LINER	5500'-6498'
P.B.T.D.	6245'
2-7/8" F.L. TUBING	0-5421'
PACKER	5422'-5429'
2-7/8" F.L. JOINT	5429'-5460'
ON/OFF TOOL 1.875" "F"	5460'-5467'
2-3/8" F.G.W.	5467'-5594'
PACKER	5594'-5597'
2-3/8" F.G. TUBING	5597'-5886'
WRLN RE-ENTRY GUIDE	5886'-5887'
5500	Q-18 "B"

INJECTION PROFILE



PERCENTAGE INJECTED INTO ZONE



TEMPERATURES (F°)

DATE	RUN #16 12/23/1998	RUN #17 8/15/2013	RUN #18 10/24/2014
SURFACE	46.3	99.0	93.6
5627-5771	---	---	---
5771-5777	---	---	---
5777-5859	---	---	---
5859-5893	---	---	---
5893-6006	---	---	---
TDL (5963)	139.0	121.0	134.4
6006-6012	---	---	---
6012-6123	---	---	---
6123-6141	---	---	---
6141-6233	---	---	---
6233-6259	---	---	---
6259-6498	---	---	---
RATE (B/D)	1050	570	160
PRESS (PSI)	2100	1580	1740