

Chevron
U.S.A., Inc.

WELL NO.: A.C. McLAUGHLIN 42
(2409)
FIELD ...: RANGELY, CO.

SURVEY DATA

REMARKS

RUN NO. 25	
SURVEY TYPE : T-S-T	SURFACE TEMP. : 118.3 F
DATE : 10/22/2014	BHT : 119.2 F
METERED RATE : 1400 B/D	TBG PRESSURE : 1530 PSI
MEASURED RATE : 1564 B/D	CSG PRESSURE : 0 PSI
DESIRED RATE : N/A	PICK-UP : 6346'
SERVICE CO. : PLS	INJ. FLUID : H2O

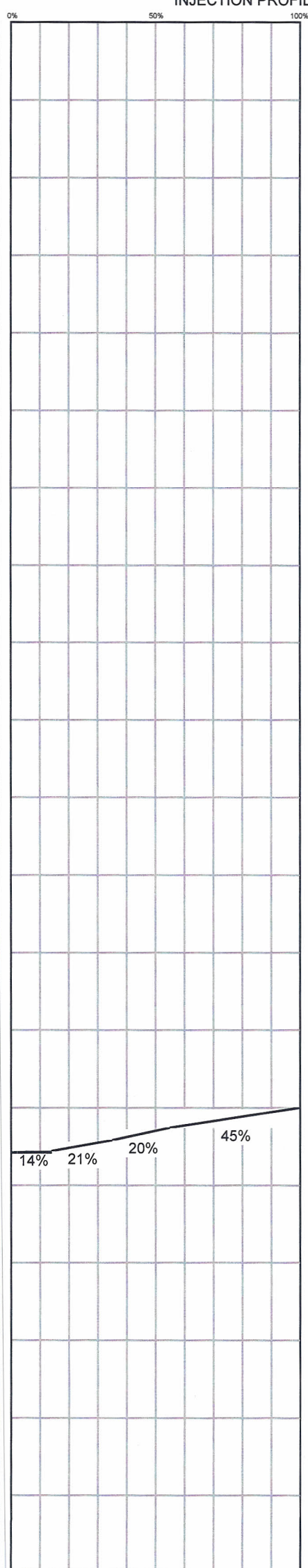
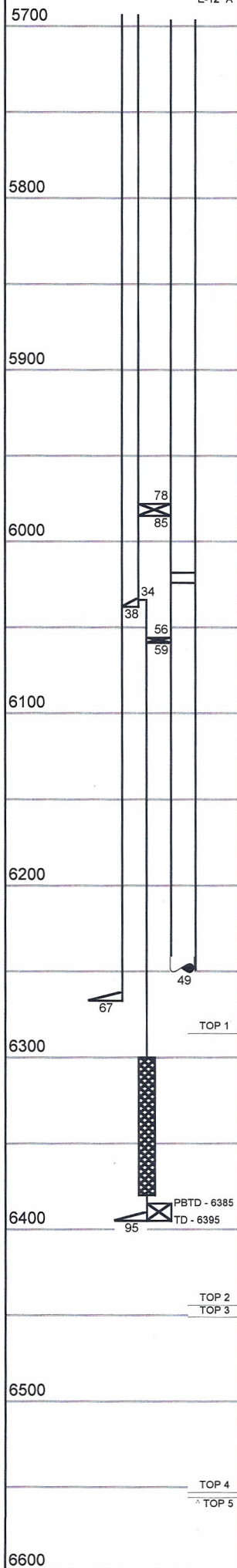
R/A TRACER INDICATES TOP PERF, PACKERS AND CASING SHOES OK.
RECORDED BY: MATT STRATTON

10/20/14, RAN 1.75" GAUGE RING TO 6326'; UNABLE TO GET ANY DEEPER.

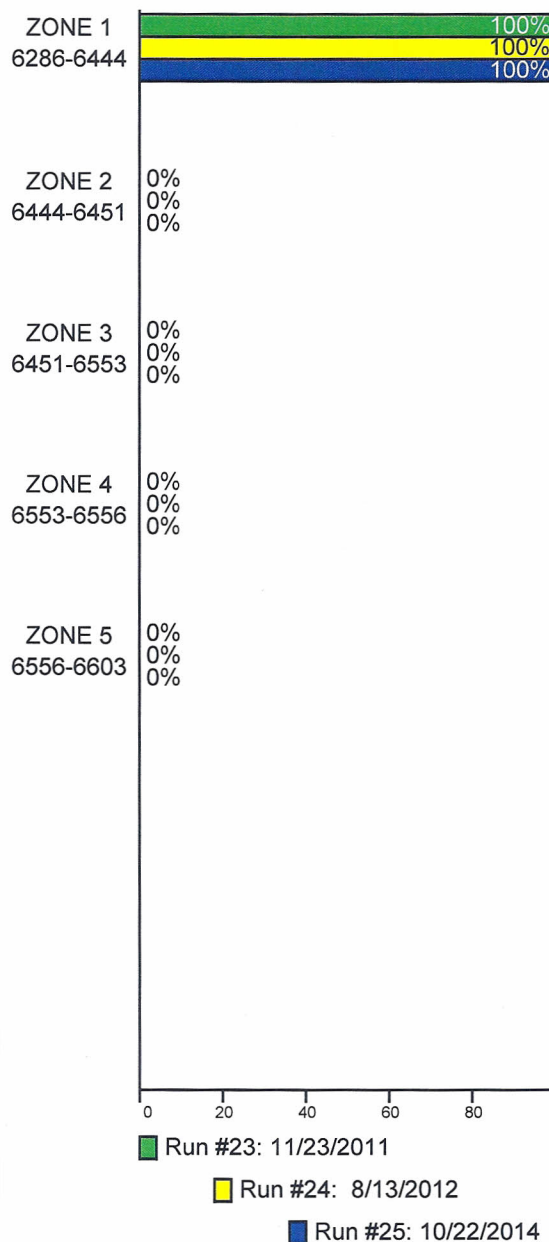
INJECTION PROFILE

MECHANICAL INFORMATION

7" 26# CASING	0-6267#
5-1/2" 17# LINER	0-6038#
5" 18# LINER	6034'-6395#
P.B.T.D.	6385'
2-7/8" F.L. TUBING	0-5978#
5-1/2" TOP PACKER	5978'-5985'
EXT. ON/OFF TOOL	6018'-6024'
2-3/8" TUBING	6024'-6056'
PACKER	6056'-6059'
2-3/8" F.G.W. TK-15	6059'-6249'
	E-12 "2"



PERCENTAGE INJECTED INTO
ZONE



TEMPERATURES (F°)

DATE	RUN #23 11/23/2011	RUN #24 8/13/2012	RUN #25 10/22/2014
SURFACE	113.9	108.1	118.3
6286-6444	---	---	---
TDL (6346)	116.5	120.1	119.2
6444-6451	---	---	---
6451-6553	---	---	---
6553-6556	---	---	---
6556-6603	---	---	---
RATE (B/D)	2045	1944	1564
PRESS (PSI)	1300	1500	1530