

WPX ENERGY ROCKY MOUNTAIN LLC-EBUS

RGU 44-24-198

Cyclone 29

Post Job Summary
Cement Surface Casing

Date Prepared: 07/15/2014
Job Date: 07/11/2014

Submitted by: Aaron Katz – Grand Junction Cement Engineer

The Road to Excellence Starts with Safety

Sold To #: 300721		Ship To #: 3276460		Quote #:		Sales Order #: 0901498913				
Customer: WPX ENERGY ROCKY MOUNTAIN LLC-EBUS				Customer Rep: TED RAGSDALE						
Well Name: FEDERAL		Well #: RGU 44-24-198		API/UWI #: 05-103-12083-00						
Field: SULPHUR CREEK		City (SAP): MEEKER		County/Parish: RIO BLANCO		State: COLORADO				
Legal Description: 24-1S-98W-2111FSL-1673FEL										
Contractor: CYCLONE				Rig/Platform Name/Num: CYCLONE 29						
Job BOM: 392189										
Well Type: DIRECTIONAL GAS										
Sales Person: HALAMERICA\HAL7171				Srv Supervisor: Thomas Ponder						
Job										
Formation Name										
Formation Depth (MD)		Top		Bottom						
Form Type				BHST		115 degF				
Job depth MD		3949ft		Job Depth TVD						
Water Depth				Wk Ht Above Floor		3 FT				
Perforation Depth (MD)		From		To						
Well Data										
Description	New / Used	Size in	ID in	Weight lbm/ft	Thread	Grade	Top MD ft	Bottom MD ft	Top TVD ft	Bottom TVD ft
Open Hole Section			14.75				0	1750		0
Casing		9.625	8.921	36		J-55	0	3949		0
Open Hole Section			13.5				1750	3949	0	0
Tools and Accessories										
Type	Size in	Qty	Make	Depth ft		Type	Size in	Qty	Make	
Guide Shoe	9.625					Top Plug	9.625			
Float Shoe	9.625	1		3949		Bottom Plug	9.625			
Float Collar	9.625			3920.4		SSR plug set	9.625			
Insert Float	9.625					Plug Container	9.625	1	HES	
Stage Tool	9.625	1		1799		Centralizers	9.625			
Miscellaneous Materials										
Gelling Agt		Conc		Surfactant		Conc		Acid Type		Qty
Treatment Fld		Conc		Inhibitor		Conc		Sand Type		Size
Fluid Data										
Stage/Plug #: 1										
Fluid #	Stage Type	Fluid Name		Qty	Qty UoM	Mixing Density lbm/gal	Yield ft3/sack	Mix Fluid Gal	Rate bbl/min	Total Mix Fluid Gal
1	Fresh Water	Fresh Water		20	bbl	8.3			4	
Fluid #	Stage Type	Fluid Name		Qty	Qty UoM	Mixing Density lbm/gal	Yield ft3/sack	Mix Fluid Gal	Rate bbl/min	Total Mix Fluid Gal

2	Stage 1 HLC Lead	ECONOCEM (TM) SYSTEM	630	sack	12.8	1.11		8	9.31
FRESH WATER									
HR-5, 50 LB SK (100005050)									
POLY-E-FLAKE (101216940)									
Fluid #	Stage Type	Fluid Name	Qty	Qty UoM	Mixing Density lbm/gal	Yield ft3/sack	Mix Fluid Gal	Rate bbl/min	Total Mix Fluid Gal
3	Stage 1 VariCem Tail	VARICEM (TM) CEMENT	245	sack	12.8	1.96		8	10.93
FRESH WATER									
POLY-E-FLAKE (101216940)									
Fluid #	Stage Type	Fluid Name	Qty	Qty UoM	Mixing Density lbm/gal	Yield ft3/sack	Mix Fluid Gal	Rate bbl/min	Total Mix Fluid Gal
4	Displacement	Displacement	302.5	bbl	8.3			10	
Cement Left In Pipe Amount 29 ft Reason Shoe Joint									
Fluid Data									
Stage/Plug #: 2									
Fluid #	Stage Type	Fluid Name	Qty	Qty UoM	Mixing Density lbm/gal	Yield ft3/sack	Mix Fluid Gal	Rate bbl/min	Total Mix Fluid Gal
1	Fresh Water	Fresh Water	20	bbl	8.3		4		
Fluid #	Stage Type	Fluid Name	Qty	Qty UoM	Mixing Density lbm/gal	Yield ft3/sack	Mix Fluid Gal	Rate bbl/min	Total Mix Fluid Gal
2	Stage 2 VariCem Lead	VARICEM (TM) CEMENT	1245	sack	12.8	1.96		8	10.93
POLY-E-FLAKE (101216940)									
FRESH WATER									
Fluid #	Stage Type	Fluid Name	Qty	Qty UoM	Mixing Density lbm/gal	Yield ft3/sack	Mix Fluid Gal	Rate bbl/min	Total Mix Fluid Gal
3	Displacement	Displacement	139.1	bbl	8.3			4	
Fluid #	Stage Type	Fluid Name	Qty	Qty UoM	Mixing Density lbm/gal	Yield ft3/sack	Mix Fluid Gal	Rate bbl/min	Total Mix Fluid Gal
4	VersaCem (TM) System	Type I-II Cement	140	sack	15.6	1.21		2	5.4

HALLIBURTON

Cementing Job Summary

5.39 Gal	FRESH WATER		
2 %	CALCIUM CHLORIDE, PELLET, 50 LB (101509387)		
94 lbm	TYPE I / II CEMENT, BULK (101439798)		
Cement Left In Pipe	Amount	29 ft	Reason Shoe Joint
Comment			

HALLIBURTON

WPX ENERGY ROCKY MOUNTAIN LLC-EBUS
901498913
Case 1

1.1 Job Event Log

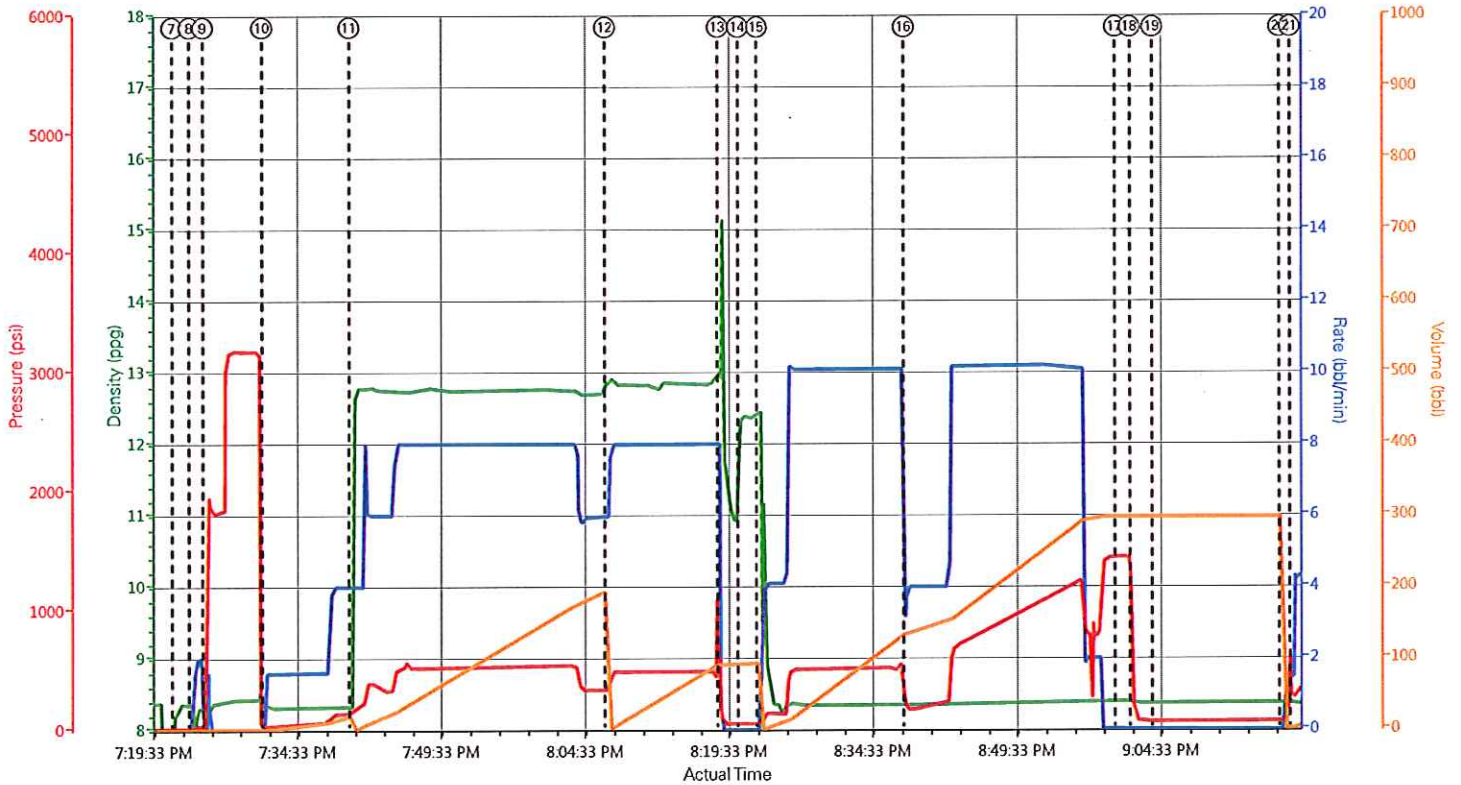
Type	Seq. No.	Graph Label	Date	Time	Source	DH Density (ppg)	Comb Pump Rate (bbl/min)	PS Pump Press (psi)	Pump Stg Tot (bbl)	Comment
Event	1	Call Out	7/11/2014	07:00:00	USER					ON LOCATION TIME OF 1400
Event	2	Crew Leave Yard	7/11/2014	11:30:00	USER					ALL HES PRESENT FOR PRE-CONVOY SAFETY HUDDLE
Event	3	Arrive At Loc	7/11/2014	14:30:00	USER					RIG WAS RUNNING CASING WHEN CREW ARRIVED ON LOCATION
Event	4	Assessment Of Location Safety Meeting	7/11/2014	15:00:00	USER					T
Event	5	Rig-Up Equipment	7/11/2014	18:00:00	USER					1-550 PICKUP, 1-ELITE PUMP, 2-660 CUFT BULK TRUCK, 2-1700 CUFT SILOS
Event	6	Pre-Job Safety Meeting	7/11/2014	18:45:00	USER					ALL HES PRESENT, RIG CREW PRESENT, RIG TO CASING @ 1800
Event	7	Start Job	7/11/2014	19:21:46	COM7					
Event	8	Prime Pumps	7/11/2014	19:23:33	COM7	8.33	2	34	2	FILL LINES
Event	9	Test Lines	7/11/2014	19:24:59	COM7	8.33	.1	3177	.1	PRESSURE TEST HELD GREAT
Event	10	Pump Spacer 1	7/11/2014	19:31:10	COM7	8.33	4	145	20	FRESH WATER
Event	11	Pump Lead Cement	7/11/2014	19:40:16	COM7	12.8	8	530	198.6	630 SKS 12.8 PPG 1.77 FT3/SK 9.31 GAL/SK
Event	12	Pump Tail Cement	7/11/2014	20:06:56	COM7	12.8	8	500	434.6	245 SKS 12.8 PPG 1.96 FT3/SK 10.93 GAL/SK
Event	13	Shutdown	7/11/2014	20:18:41	USER					
Event	14	Drop Plug	7/11/2014	20:20:47	USER					PLUG PUSHED PASS TATTLE TELL
Event	15	Pump Displacement	7/11/2014	20:22:47	COM7	8.33	10	525	302.5	FRESH WATER, WASHED UP ON TOP OF THE PLUG WITH THE FIRST 10 BBL OF DISPLACEMENT OUT OF THE MIXING TUB
Event	16	Slow Rate	7/11/2014	20:38:06	USER	8.33	4	235	20	SLOWED RATE TO GO THROGH TOOL AND TO BUMP PLUG
Event	17	Bump Plug	7/11/2014	21:00:05	COM7	8.33	2	960	10	BUMPED PLUG
Event	18	Check Floats	7/11/2014	21:01:37	USER			1455		FLOATS HELD 1.5 BBL BACK TO DISPLACEMENT TANKS
Event	19	Drop Opening	7/11/2014	21:03:57	USER					DROPPED OPENING DEVICE

HALLIBURTON

WPX ENERGY ROCKY MOUNTAIN LLC-EBUS
901498913
Case 1

Device For Multiple Stage Cementer										
Event	20	Open Multiple Stage Cementer	7/11/2014	21:17:14	COM7	8.33	4	677	1.5	OPENED TOOL AT 677 PSI
Event	21	Pump Spacer 1	7/11/2014	21:18:18	USER	8.33'	4	322	20	FRESH WATER
Event	22	Pump Lead Cement	7/11/2014	21:30:11	COM7	12.8	8	550	434.6	1245 SKS 12.8 PPG 1.96 FT3/SK 10.93 GAL/SK
Event	23	Cement Returns to Surface	7/11/2014	21:56:50	USER					40 BBLs 1 ST STAGE LEAD TO SURFACE
Event	24	Pump Displacement	7/11/2014	22:35:14	COM7	8.33	3.5	590	139.1	FRESH WATER, WASHED UP ON TOP OF THE PLUG WITH THE FIRST 10 BBL OF DISPLACEMENT OUT OF THE MIXING TUB
Event	25	Bump Plug	7/11/2014	23:14:05	USER	8.33	3.5	600		GOOD RETURNS, CIRCULATED 160 BBL OF CEMENT TO SURFACE
Event	26	Close Multiple Stage Cementer	7/11/2014	23:17:31	COM7			1990		TOOL CLOSED, 1 1/2 BBL BACK TO THE DISPLACEMENT TANKS
Event	27	End Job	7/11/2014	23:22:38	COM7					THANK YOU FOR CHOOSING HALLIBURTON, THOMAS PONDER AND CREW

WPX - FED RGU 44-24-198 - FIRST STAGE



DH Density (ppg) 8.39 Comb Pump Rate (bbl/min) 0 PS Pump Press (psi) -1 Pump Stg Tot (bbl) 0

① Call Out n/a;n/a;n/a	④ Assessment Of Location Safety Meeting n/a;n/a;n/a	⑦ Start Job 8.22;0;9,0	⑩ Pump Spacer 18.35;0;25;2	⑬ Shutdown 13;0;186;92.9
② Crew Leave Yard n/a;n/a;n/a	⑤ Rig-Up Equipment n/a;n/a;n/a	⑧ Prime Pumps 8.36;0;8,0	⑪ Pump Lead Cement 8.32;4;144;20.5	⑭ Drop Plug 12.4;0;49;92.9
③ Arrive At Loc n/a;n/a;n/a	⑥ Pre-Job Safety Meeting n/a;n/a;n/a	⑨ Test Lines 8.31;0;19;2	⑫ Pump Tail Cement 12.68;6;334;195.6	⑮ Pump Displacement 12.46;0;51;92.9

HALLIBURTON | iCem® Service

Created: 2014-07-11 18:46:57, Version: 3.0.121

Edit

Customer: WPX ENERGY ROCKY MOUNTAIN LLC-EBUS

Job Date: 7/11/2014 6:51:40 PM

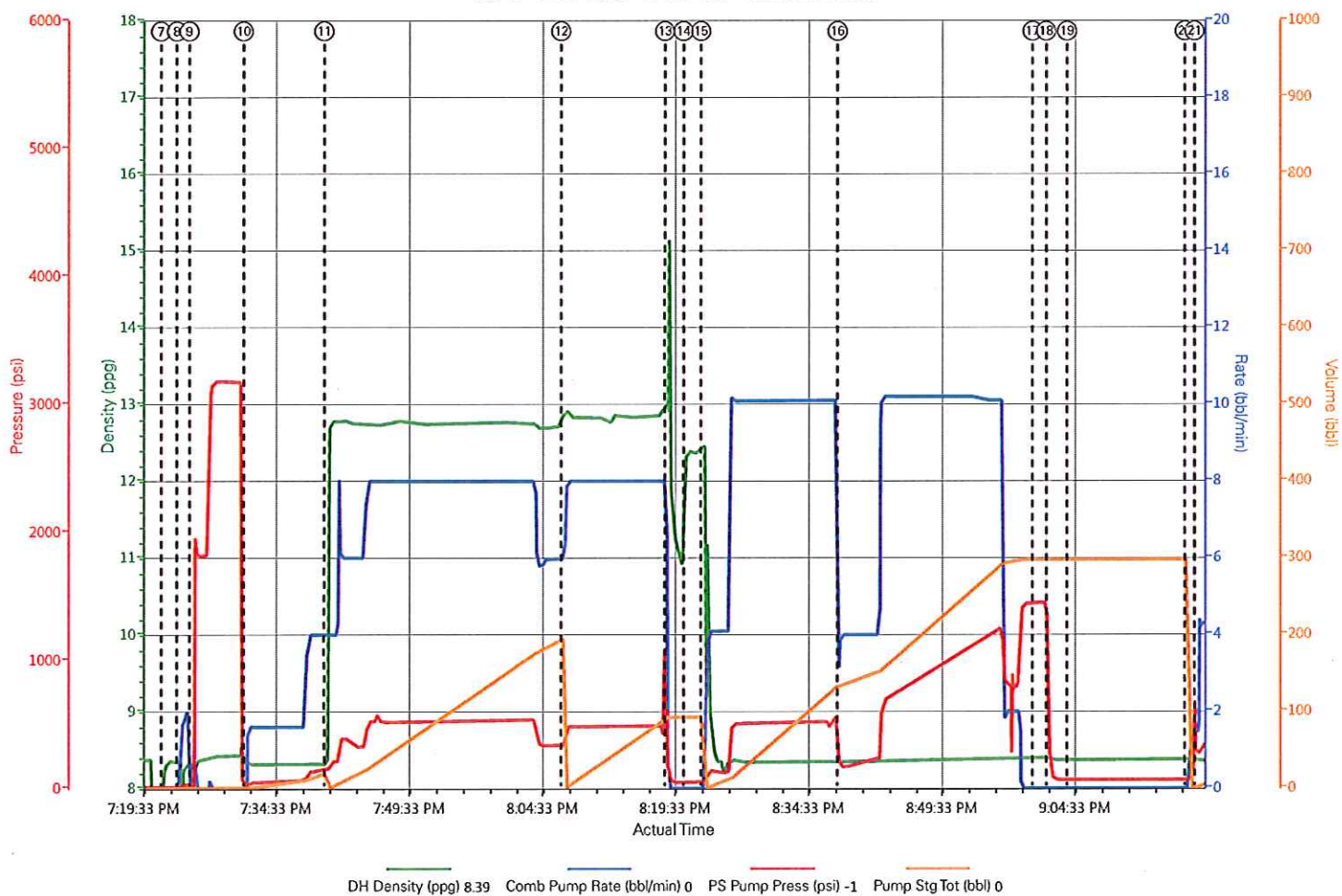
Well: FEDERAL RGU 44-24-198

Representative: TED RAGSDALE

Sales Order #: 901498913

ELITE # 7: TRAVIS BROWN / ANDREW LINN
THOMAS PONDER

WPX - FED RGU 44-24-198 - FIRST STAGE



HALLIBURTON | iCem® Service

Created: 2014-07-11 18:46:57, Version: 3.0.121

Edit

Customer: WPX ENERGY ROCKY MOUNTAIN LLC-EBUS

Job Date: 7/11/2014 6:51:40 PM

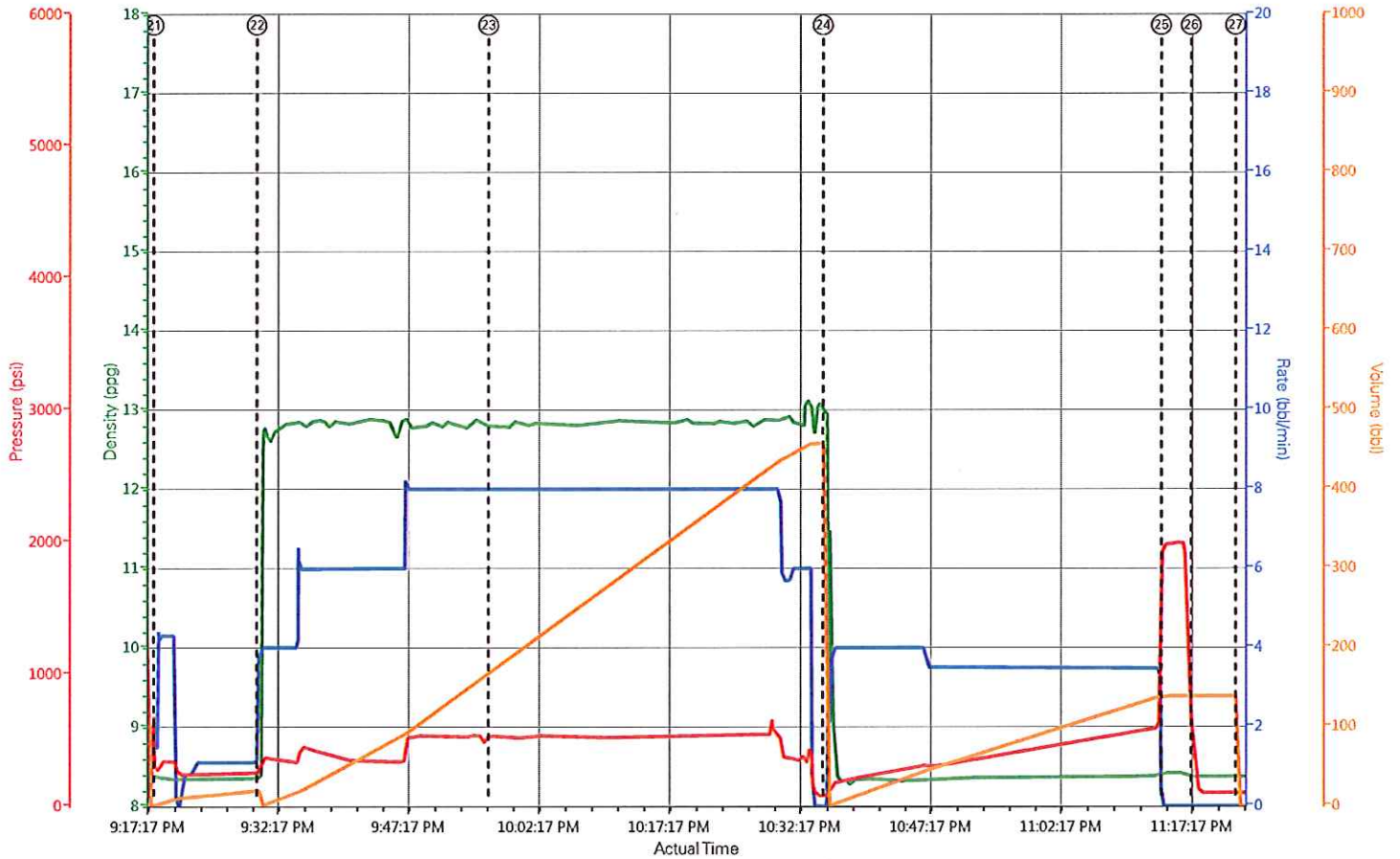
Well: FEDERAL RGU 44-24-198

Representative: TED RAGSDALE

Sales Order #: 901498913

ELITE # 7: TRAVIS BROWN / ANDREW LINN
THOMAS PONDER

WPX - FED RGU 44-24-198 - SECOND STAGE



DH Density (ppg) 8.39 Comb Pump Rate (bbl/min) 0 PS Pump Press (psi) -1 Pump Stg Tot (bbl) 0

① Call Out n/a;n/a;n/a	④ Assessment Of Location Safety Meeting n/a;n/a;n/a	⑦ Start Job 8.22;0;9,0	⑩ Pump Spacer 18.35;0;25;2	⑬ Shutdown 13;0;186;92.9
② Crew Leave Yard n/a;n/a;n/a	⑤ Rig-Up Equipment n/a;n/a;n/a	⑧ Prime Pumps 8.36;0;8;0	⑪ Pump Lead Cement 8.32;4;144;20.5	⑭ Drop Plug 12.4;0;49;92.9
③ Arrive At Loc n/a;n/a;n/a	⑥ Pre-Job Safety Meeting n/a;n/a;n/a	⑨ Test Lines 8.31;0;19;2	⑫ Pump Tail Cement 12.68;6;334;195.6	⑮ Pump Displacement 12.46;0;51;92.9

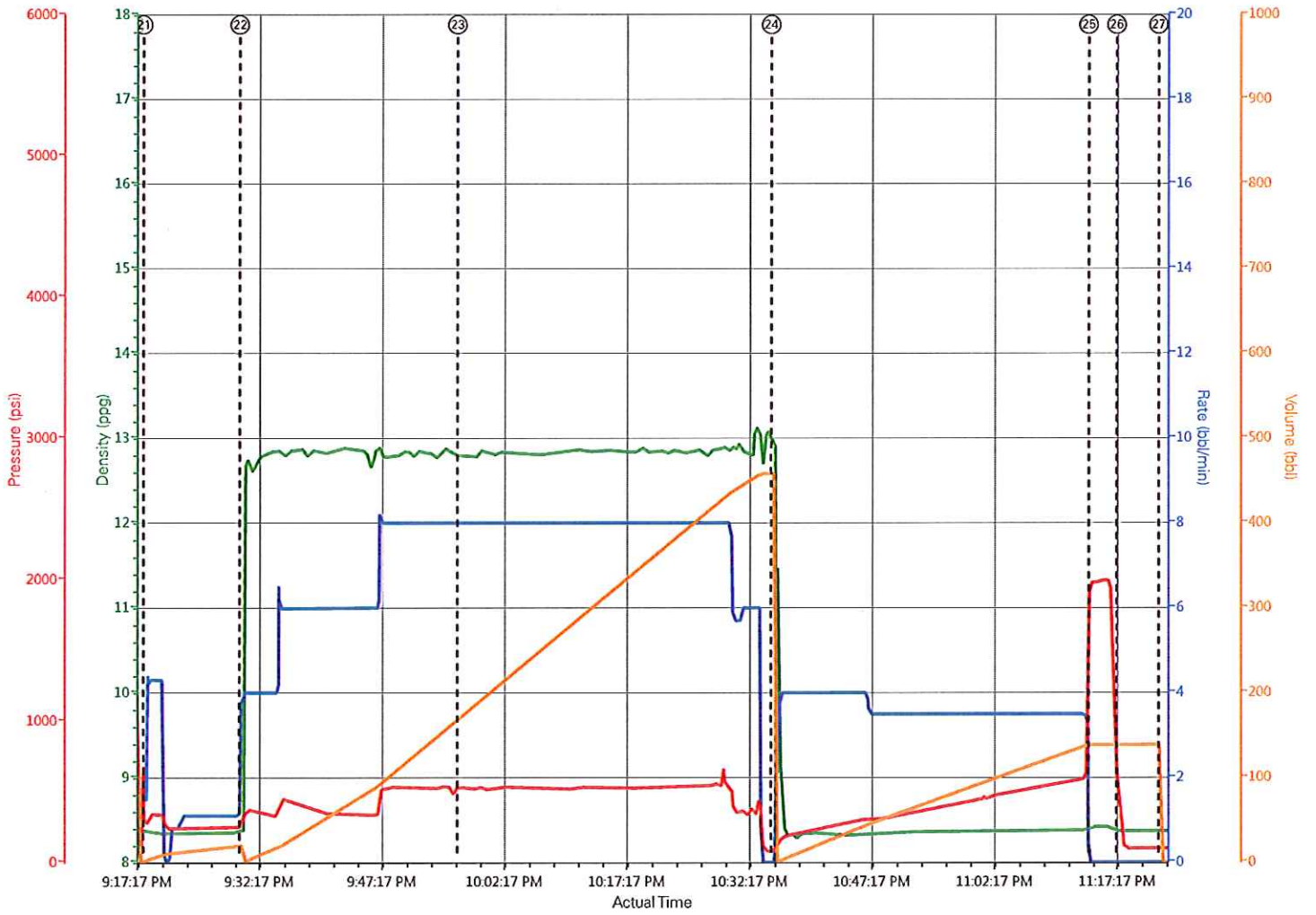
III

HALLIBURTON | iCem® Service

Created: 2014-07-11 18:45:57, Version: 3.0.121

Edit

WPX - FED RGU 44-24-198 - SECOND STAGE



DH Density (ppg) 8.39 Comb Pump Rate (bbl/min) 0 PS Pump Press (psi) -1 Pump Stg Tot (bbl) 0

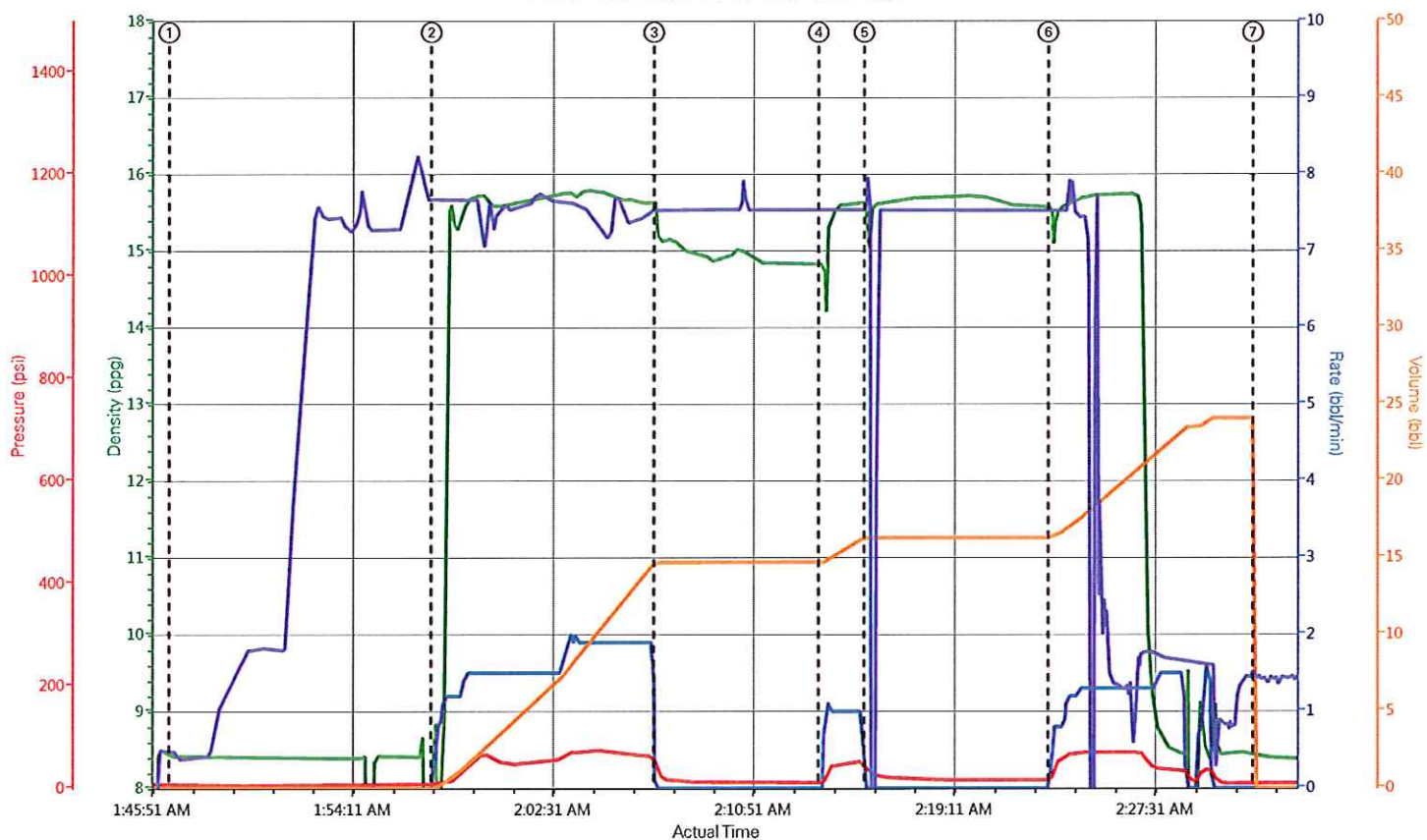
HALLIBURTON

WPX ENERGY ROCKY MOUNTAIN LLC-EBUS
901498913
Case 2

1.1 Job Event Log

Type	Seq. No.	Graph Label	Date	Time	Source	DH Density (ppg)	Comb Pump Rate (bbl/min)	PS Pump Press (psi)	Pump Stg Tot (bbl)	Recirc Density (ppg)	Comment
Event	1	Start Job	7/12/2014	01:46:39	COM7						TOPPED OUT 2 WELL WITH CMT TO SURFACE FROM 2ND STAGE
Event	2	Pump Cement	7/12/2014	01:57:35	COM7	15.6	2	8.00	15	15.68	100 SKS 15.6 PPG 1.21 FT3 SK 5.40GAL/SK
Event	3	Shutdown	7/12/2014	02:06:50	USER						WATCHING CMT FALL
Event	4	Pump Cement	7/12/2014	02:13:40	USER	15.6	1	11.00	5	15.53	SWITCHED WELLS
Event	5	Shutdown	7/12/2014	02:15:34	USER						CMT TO SURFACE
Event	6	Clean Lines	7/12/2014	02:23:12	USER				5		FLUSHED 5 BBLS OF WATER THROUGH IRON
Event	7	End Job	7/12/2014	02:31:42	COM7						THANK YOU FOR CHOOSING HALIBURTON

WPX - FED RGU 44-24-198 - TOP OUT



DH Density (ppg) Comb Pump Rate (bbl/min) PS Pump Press (psi) Pump Stg Tot (bbl) Recirc Density (ppg)

① Start Job 8.41;0.5;0.8.48 ② Pump Cement 8.46;0.8;0.15.68 ③ Shutdown 15.25;0.37;14.7;15.53 ④ Pump Cement 14.83;0.11;14.7;15.53 ⑤ Shutdown 15.36;0.34;16.3;15.95 ⑥ Clean Lines 15.57;0.8;17.1

HALLIBURTON | iCem® Service

Created: 2014-07-12 00:49:02, Version: 3.0.121

Edit

Customer: WPX ENERGY ROCKY MOUNTAIN LLC-EBUS

Job Date: 7/12/2014 1:26:42 AM

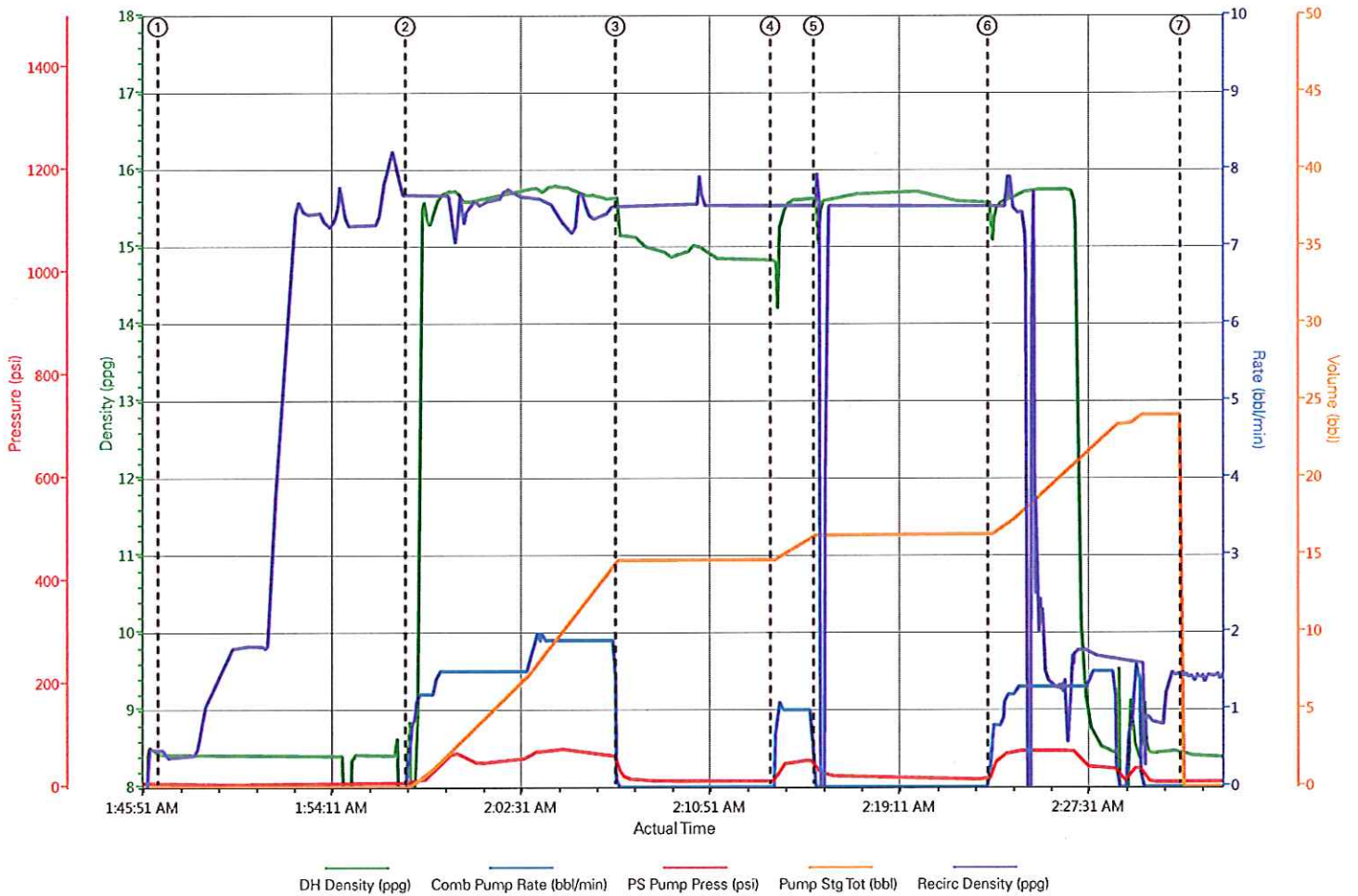
Well: FEDERAL RGU 44-24-198

Representative: TED RAGSDALE

Sales Order #: 901498913

ELITE # 7: TRAVIS BROWN / ANDREW LINN
THOMAS PONDER

WPX - FED RGU 44-24-198 - TOP OUT



▼ **HALLIBURTON** | iCem® Service

Created: 2014-07-12 00:49:02, Version: 3.0.121

Edit

Customer: WPX ENERGY ROCKY MOUNTAIN LLC-
EBUS

Job Date: 7/12/2014 1:26:42 AM

Well: FEDERAL RGU 44-24-198

Representative: TED RAGSDALE

Sales Order #: 901498913

ELITE # 7: TRAVIS BROWN / ANDREW LINN
THOMAS PONDER

HALLIBURTON

Company: WPX Date: 7/11/2014
Submitted by: THOMAS PONDER Date Rec.: 7/11/2014
Attention: LARRY COOKSEY S.O.# 901498913
Lease FEDERAL Job Type: MULTI STAGE SURFACE
Well # RGU 44-24-198

Specific Gravity	<i>MAX</i>	<i>1</i>
pH	<i>8</i>	<i>7</i>
Potassium (K)	<i>5000</i>	<i>0 Mg / L</i>
Calcium (Ca)	<i>500</i>	<i>120 Mg / L</i>
Iron (FE2)	<i>300</i>	<i>0 Mg / L</i>
Chlorides (Cl)	<i>3000</i>	<i>0 Mg / L</i>
Sulfates (SO ₄)	<i>1500</i>	<i><200 Mg / L</i>
Carbonates hardness		
Temp	<i>40-80</i>	<i>85 Deg</i>
Total Dissolved Solids		<i>350 Mg / L</i>

Respectfully: THOMAS PONDER

Title: CEMENTING SUPERVISOR

Location: GRAND JCT, CO

Sales Order #: 0901498913	Line Item: 10	Survey Conducted Date: 7/12/2014
Customer: WPX ENERGY ROCKY MOUNTAIN LLC-EBUS		Job Type (BOM): CMT MULTIPLE STAGES BOM
Customer Representative: TED RAGSDALE		API / UWI: (leave blank if unknown) 05-103-12083-00
Well Name: FEDERAL		Well Number: 0080359360
Well Type: DIRECTIONAL GAS	Well Country: USA	
H2S Present: No	Well State: COLORADO	Well County: RIO BLANCO

Dear Customer,

We hope that you were satisfied with the service quality of this job performed by Halliburton. It is the aim of our management and service personnel to deliver equipment and service of a standard unmatched in the service sector of the energy industry.

Please take the time to let us know if our performance met with your satisfaction. Please be as critical as possible to ensure we constantly improve our service. Your comments are of great value to us and are intended for the exclusive use of Halliburton.

CUSTOMER SATISFACTION SURVEY

CATEGORY	CUSTOMER SATISFACTION RESPONSE	
Survey Conducted Date	The date the survey was conducted	7/12/2014
Survey Interviewer	The survey Interviewer is the person who initiated the survey.	HX41187
Customer Participation	Did the customer participate in this survey? (Y/N)	Yes
Customer Representative	Enter the Customer representative name	TED RAGSDALE
HSE	Was our HSE performance satisfactory? Circle Y or N	Yes
Equipment	Were you satisfied with our Equipment? Circle Y or N	Yes
Personnel	Were you satisfied with our people? Circle Y or N	Yes
Customer Comment	Customer's Comment	GREAT JOB / WELL DONE THANKS GUYS

CUSTOMER SIGNATURE

Sales Order #: 0901498913	Line Item: 10	Survey Conducted Date: 7/12/2014
Customer: WPX ENERGY ROCKY MOUNTAIN LLC-EBUS		Job Type (BOM): CMT MULTIPLE STAGES BOM
Customer Representative: TED RAGSDALE		API / UWI: (leave blank if unknown) 05-103-12083-00
Well Name: FEDERAL		Well Number: 0080359360
Well Type: DIRECTIONAL GAS	Well Country: USA	
H2S Present: No	Well State: COLORADO	Well County: RIO BLANCO

KEY PERFORMANCE INDICATORS

General	
Survey Conducted Date The date the survey was conducted	7/12/2014

Cementing KPI Survey	
Type of Job Select the type of job. (Cementing or Non-Cementing)	0
Select the Maximum Deviation range for this Job What is the highest deviation for the job you just completed? This may not be the maximum well deviation.	Deviated
Total Operating Time (hours) Total Operating Hours Including Rig-up, Pumping, Rig-down. Enter in decimal format.	8
HSE Incident, Accident, Injury HSE Incident, Accident, Injury. This should be recordable incidents only.	No
Was the job purpose achieved? Was the job delivered correctly as per customer agreed design?	Yes
Operating Hours (Pumping Hours) Total number of hours pumping fluid on this job. Enter in decimal format.	5
Customer Non-Productive Rig Time (hrs) Lost time due to Halliburton in the start, execution, or completion of an ordered service or product, or delays in a follow-on service. Enter in decimal format. 0 if none.	0
Type of Rig Classification Job Was Performed Type Of Rig (classification) Job Was Performed On	Drilling Rig (Portable)
Number Of JSAs Performed Number Of Jsas Performed	9
Number of Unplanned Shutdowns Unplanned shutdown is when injection stops for any period of time.	0
Was this a Primary Cement Job (Yes / No)	Yes

Sales Order #: 0901498913	Line Item: 10	Survey Conducted Date: 7/12/2014
Customer: WPX ENERGY ROCKY MOUNTAIN LLC-EBUS		Job Type (BOM): CMT MULTIPLE STAGES BOM
Customer Representative: TED RAGSDALE		API / UWI: (leave blank if unknown) 05-103-12083-00
Well Name: FEDERAL		Well Number: 0080359360
Well Type: DIRECTIONAL GAS	Well Country: USA	
H2S Present: No	Well State: COLORADO	Well County: RIO BLANCO

Primary Cement Job= Casing job, Liner job, or Tie-back job.	
Did We Run Wiper Plugs? Did We Run Top And Bottom Casing Wiper Plugs?	Top
Mixing Density of Job Stayed in Designed Density Range (0-100%) Density Range defined as +/- .20 ppg. Calculation: Total BBLs cement mixed at designed density divided by total BBLs of cement multiplied by 100	98
Was Automated Density Control Used? Was Automated Density Control (ADC) Used ?	Yes
Pump Rate (percent) of Job Stayed At Designed Pump Rate Pump Rate range defined as +/- 1bbl/min. Calculation: Total BBLs of fluid pumped at the designed rate divided by Total BBLs of fluid pumped, multiplied by 100	97
Nbr of Remedial Sqz Jobs Rqd - Competition Number Of Remedial Squeeze Jobs Required After Primary Job Performed By Competition	0
Nbr of Remedial Plug Jobs Rqd - HES Number Of Remedial Plug Jobs Needed After Primary Plug Pumped By HES	0
Nbr of Remedial Sqz Jobs Rqd - HES Number Of Remedial Squeeze Jobs Required After Primary Job Performed By HES	0