



410 17th Street, Suite 1500  
Denver, CO 80202  
(720) 440-6100 phone  
(720) 305-0804 fax

[Bonanzacrk.com](http://Bonanzacrk.com)

November 18, 2014

Colorado Oil and Gas Conservation Commission  
The Chancery Building  
1120 Lincoln Street, Suite 801  
Denver, CO 80203

Attn: Matthew Lepore, Director

Re: Notice of 318A.a(4).D Well Proposal  
State Antelope B-V-2HNB  
SHL: NWNW (1398' FNL, 334' FWL) Section 2-T5N-R62W, Weld County, CO  
Top of Production: (1320' FNL and 631' FWL) Section 2-T5N-R62W, Weld County, CO  
Bottom of Production: (1320' FNL and 470' FEL) Section 2-T5N-R62W, Weld County, CO

Dear Director Lepore:

Bonanza Creek Energy, Inc. (Bonanza) intends to permit, drill and operate the referenced Niobrara Horizontal Well. As defined by Colorado Oil and Gas Conservation Commission (COGCC) Rule 318A.a.(4)D., Bonanza proposes the following wellbore spacing unit:

Lots 1 – 4 & S/2N/2 Section 2-T5N-R62W, Weld County, CO – containing 320 acres more or less

Bonanza is the sole mineral lease holder in the proposed spacing unit, and no mineral owner notifications were required.

Bonanza respectfully requests that you review the enclosed wellbore spacing unit documentation and approve the referenced APD.

Please do not hesitate to call or email me at (720) 440-6112 or [Kcaplan@Bonanzacrk.com](mailto:Kcaplan@Bonanzacrk.com), should you have any questions pertaining to this matter.

Thank you for your cooperation.

Sincerely,

Keith Caplan,  
Sr. Regulatory Specialist  
BONANZA CREEK ENERGY, INC.  
BONANZA CREEK ENERGY OPERATING COMPANY, LLC

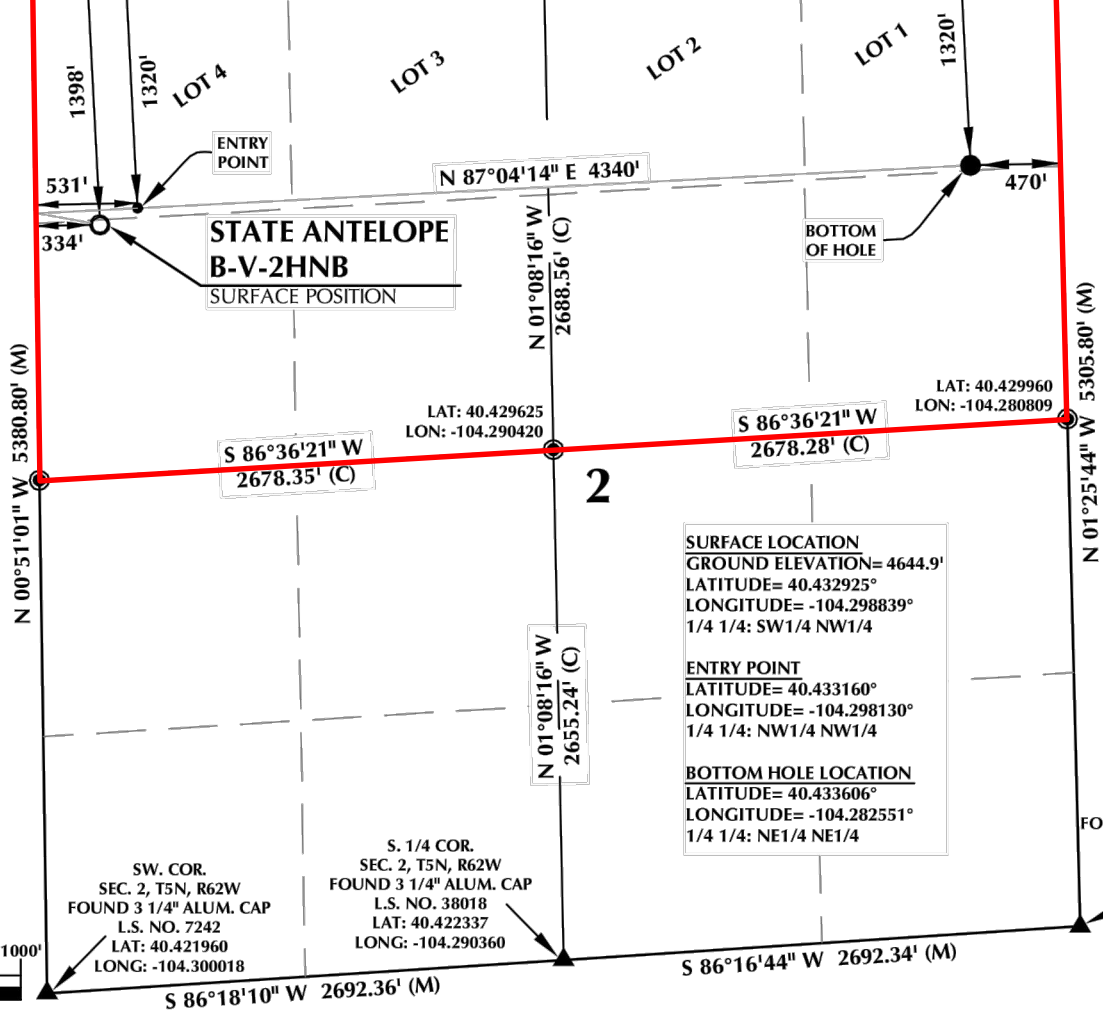
Enclosure

# T5N, R62W

NW. COR.  
SEC. 2, T5N, R62W  
FOUND 3 1/4" ALUM. CAP  
L.S. NO. 7242  
LAT: 40.436731  
LONG: -104.300043

NE. COR.  
SEC. 2, T5N, R62W  
FOUND 3 1/4" ALUM. CAP  
L.S. NO. 32828  
LAT: 40.437279  
LONG: -104.280916

S 87°04'14" W 5327.94' (M)  
LAT: 40.437005  
LON: -104.290480



## CERTIFICATE OF SURVEYOR:

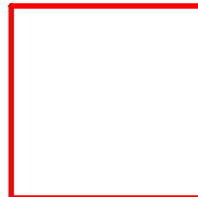
THIS IS TO CERTIFY THAT THE ABOVE PLAT WAS PREPARED FROM FIELD NOTES OF ACTUAL SURVEY MADE BY ME OR UNDER MY SUPERVISION AND TO AT THE SAME ACCURACY AND CORRECT TO THE BEST OF MY KNOWLEDGE AND BELIEF.

## NEAREST CULTURAL ITEMS:

BUILDING: 5280'+  
BUILDING UNIT: 5280'+  
HIGH OCCUPANCY BUILDING UNIT: 5280'+  
DESIGNATED OUTSIDE ACTIVITY AREA: 5280'+

## NOTES:

- ▲ INDICATES FOUND SECTION CORNER
- INDICATES CALCULATED CORNER
- DRAWING LATITUDE AND LONGITUDE COORDINATES ARE NAD83 (2011)(EPOCH:2010)
- ELEVATION BASED ON NAVD88 (GEOID09)
- BASIS OF BEARING DERIVED FROM COLORADO COORDINATE



Wellbore Spacing Unit Outline



## Wellbore Spacing Unit Map

18 November 2014 ksc

State Antelope B-V-2HNB  
Lots 1-4 Sec 2-T5N-R62W 6th PM  
S/2N/2 Sec 2-T5N-R62W 6th PM  
Weld County, Colorado