



Realtime Log

Natural Formation Evaluation
Gamma Ray

Scale:

Company: Anadarko

Well: Burkhardt 16C-3HZ

Field: Weld County (Kerr McGee)

County: Weld County State: Colorado

1:240

Measured Depth

Status:

Final Print

Surface Location:

Latitude: 40° 5' 10.122" N

Longitude: 104° 45' 37.703" W

Other Services:

Directional
VSS

API Number:
051233918000

SEC: 3 TWP: 1N RNG: 66W

Permanent Datum (P.D.): Ground Level

Elevation: 5076.00 ft.

Elevations:

Rig Floor 16.00 ft.

Above P.D.

N/A

Log Measured From: Rig Floor

Driller's Depth

KB:
DF:
GL:

5076.00 ft.
5060.00 ft.

Interval Logged

Dates

Magnetic Field Reference

Top: 7000.0 ft. Date From: 11/Sep/14 Dip Angle: 66.69 ° Azi Reference North: True

Bottom: 8067.0 ft. Date To: 11/Sep/14 Total Mag to Reference

Spud Date: 10/Sep/14 Field Strength: 52884.0 nT North Correction: 8.36 °

Borehole Record

Casing Record

Hole Size	From	To	Size	Weight	From	To
13.500 in.	Surface	1655.0 ft.	9.625 in.	36.00 lb/ft	Surface	1647.0 ft.
8.750 in.	1655.0 ft.	8067.0 ft.	7.000 in.	26.00 lb/ft	Surface	8057.0 ft.

Mud Record

Deviation Record

Type	From	To	Hole Size	Interval	Inc / Az (Start)	Inc / Az (End)
Water Based - Fresh	5426.0 ft.	7511.9 ft.	13.500 in.	1655.0 ft.	0.0 ° / 0.0 °	0.7 ° / 49.7 °
			8.750 in.	4801.0 ft.	0.7 ° / 49.7 °	84.0 ° / 179.3 °
					/	/
					/	/
					/	/
					/	/
					/	/

Acquisition System Software Version

Other

Advantage	2.20U4	Rig:	Xtreme 6	/ Xtreme Coil Drilling Corp
PATS	6.4.1.34	Job No:	6665938	
		District / Unit:	RMD	/ D&E

INTEQ does not guarantee the accuracy or correctness of interpretations provided in or from this log. Since all interpretations are opinions based on measurements, INTEQ shall under no circumstances be responsible for consequential damages or any other loss, costs, damages or expenses incurred or sustained in connection with the use of any such interpretations. INTEQ disclaims all expressed and implied warranties related to this service. INTEQ's liabilities and obligations shall be governed by INTEQ's Standard Terms and Conditions.

Log Run Summary

LWD Run No.	BHA Run No.	Bit Run No.	Bit Size (in.)	Bit Type	Bit Gauge Lenath (in.)	Assembly Type	Logged Interval		Bit Depth Interval		Date / Time		Circ. Time (hrs.)
							Top (ft.)	Bottom (ft.)	From (ft.)	To (ft.)	Start	End	
1	1	2	8.750	PDC	2.500	Steerable	7000.0	8067.0	7000.0	8067.0	11/Sep/2014 08:59	11/Sep/2014 22:48	46.1

Crew

Name	Arrive	Depart	Name	Arrive	Depart	Name	Arrive	Depart
	Wellsite	Wellsite		Wellsite	Wellsite		Wellsite	Wellsite
David Campbell	Sep 11 2014	Sep 16 2014	Jake Miller	Sep 11 2014	Sep 16 2014			

Mud Properties Record

Date / Time	LWD	Measured	Mud	Density	Viscosity	pH	Fluid	Oil /	Source	Total	K+
-------------	-----	----------	-----	---------	-----------	----	-------	-------	--------	-------	----

		Run No.	Depth (ft.)	Type	(ppg)	(cp)		Loss (cc)	Water		Chlorides (ppm)	(%)
11/Sep/2014	01:14	1	5426.0	Water Based - Fresh	8.5	30	9.0	0.0	0 / 100	Active Mud Pit	800	0.0

Mnemonics

Curve	Description	Units
GRAX	Gamma Ray Apparent, 0.5 ft. Avg.	API
ROPA	Rate of Penetration, 3.0 ft. Avg.	ft/hr
TCDX	Downhole Temperature	degF
WOBA	Surface Weight on Bit, 1.0 ft. Avg.	klbf

Equipment and Service Data

LWD Run No.	Tool	Serial Number	Measurement	Bit Offset (ft)	Max O.D. (in.)	Min I.D. (in.)
1	DIR	12093879	Directional	47.28	6.750	3.250
1	SRIG	12622667	Gamma	43.91	6.750	3.250

Service and Tool Mnemonics


Mnemonic	Name	Description
DIR	Directional	Wellbore directional survey
SRIG	Inclination and Gamma	Probe based gamma ray and inclination module

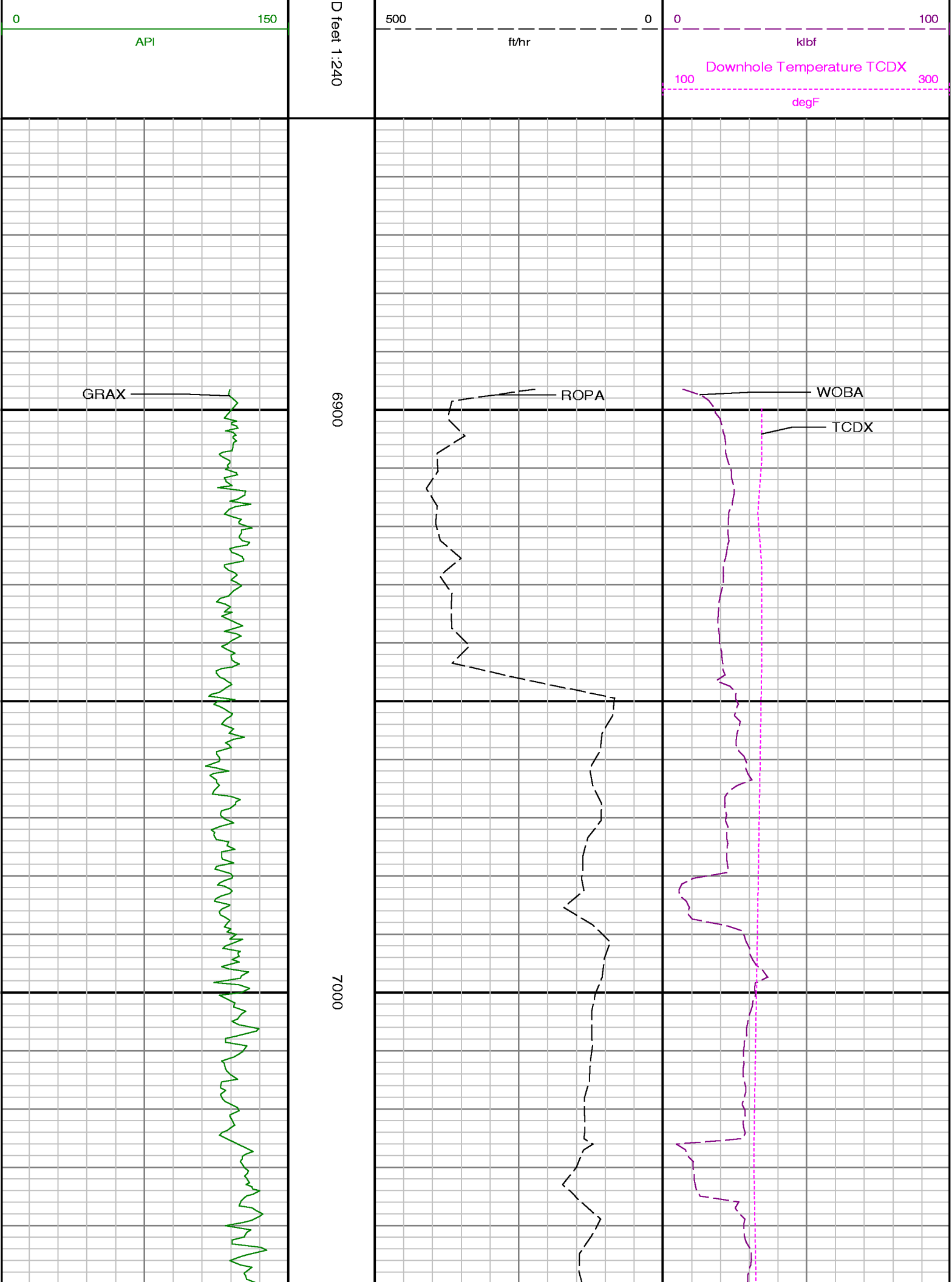
Comments

<p>1.) Depth measurements obtained from a depth control system not supplied or operated by Baker Hughes. Due to the lack of control by Baker Hughes logging engineers, depth calibrations and measurements could not be independently verified.</p> <p>2.) Baker Hughes run 1 utilized 6 3/4 inch NaviTrak services (Directional only) behind an 8 3/4 inch bit and steerable assembly from 1655 to 7000 feet MD (1654.93 to 6896.54 feet TVD) and a 6 3/4 inch NaviGamma services (Gamma Ray and Directional) behind an 8 3/4 inch bit and steerable assembly from 7000 to 8067 feet MD (6896.54 to 7540.61 feet TVD).</p> <p>3.) The interval from 1655 to 7000 feet MD (1654.93 to 6896.54 feet TVD) was not logged due to directional only services being provided through the straight-hole and nudge section for Baker Hughes run 1.</p>
--

Remarks

Number	Measured Depth (ft)	Hole Section (in.)	LWD Run No.	Remark
1	7000	8.750	1	Begin logging due to directional only service provided through vertical section.

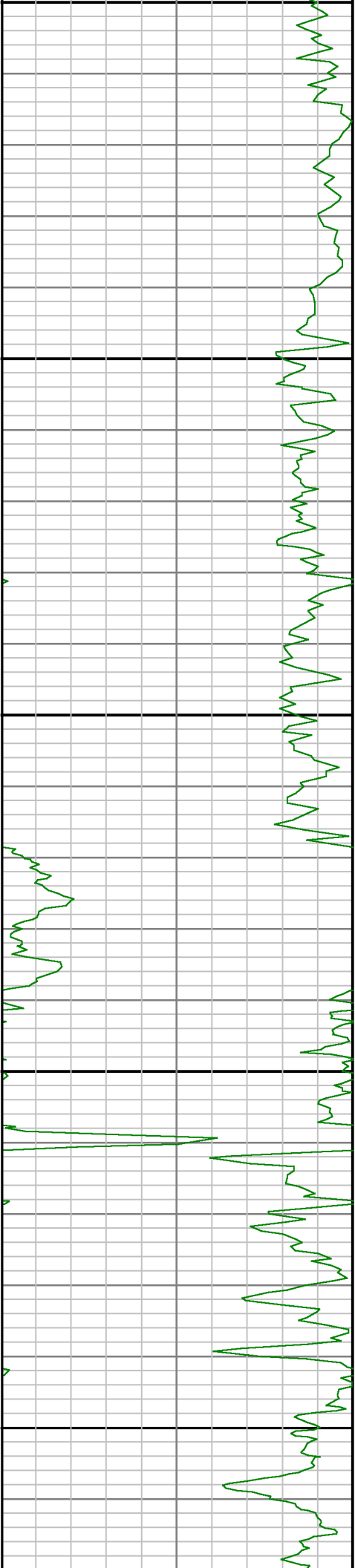
<div>  <div> <div>Company : Anadarko</div> <div>Well : Burkhardt 16C-3HZ</div> <div>Interval : 6850.00 - 7600.00 feet</div> <div>Created : 15/Sep/2014 6:07:02 AM</div> </div> </div>						
Gamma Ray Apparent 0.5 ft Avg GRAX				<div> <div></div> <div></div> </div>	Rate of Penetration 3.0 ft Avg ROP_AVG	Surface Weight On Bit 1.0 ft Avg WOB_AVG

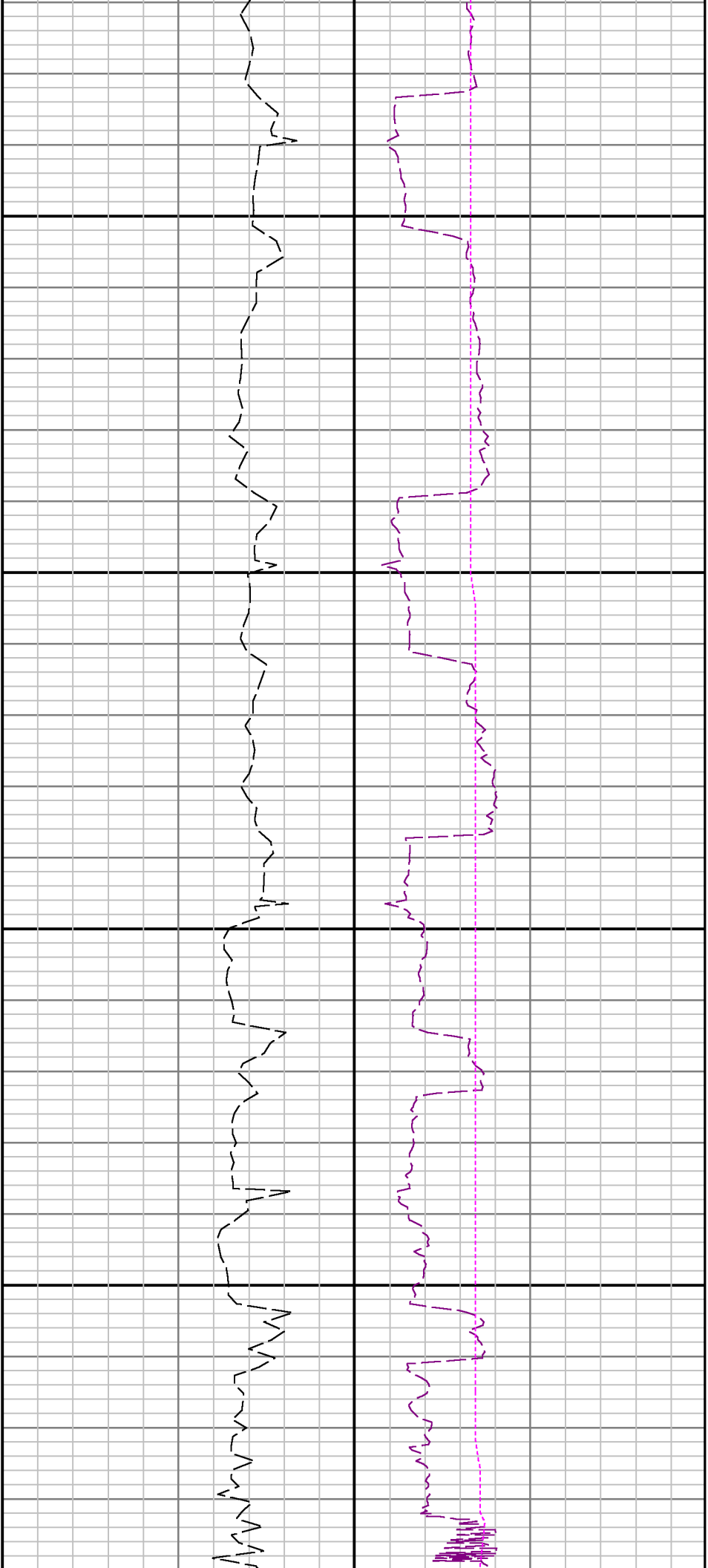




7100

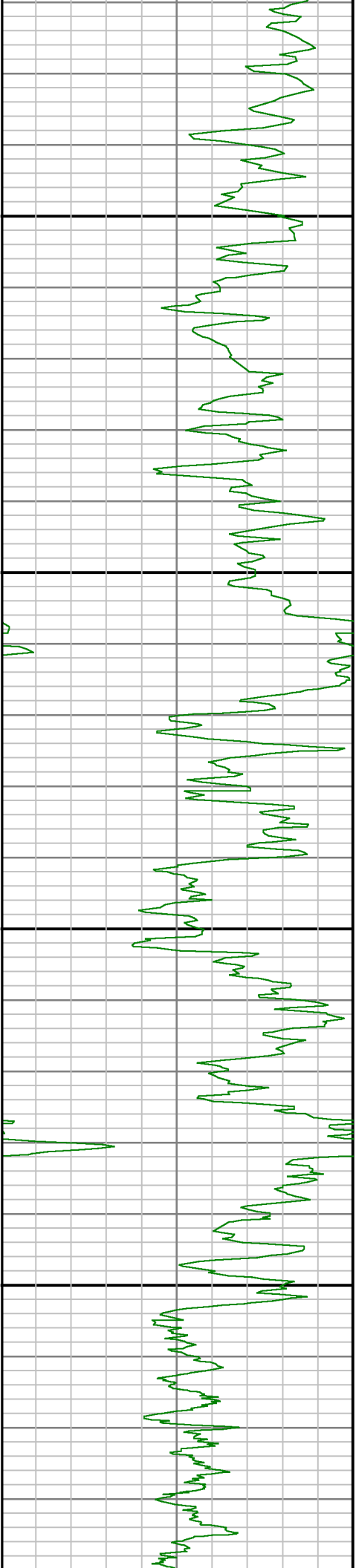
7200

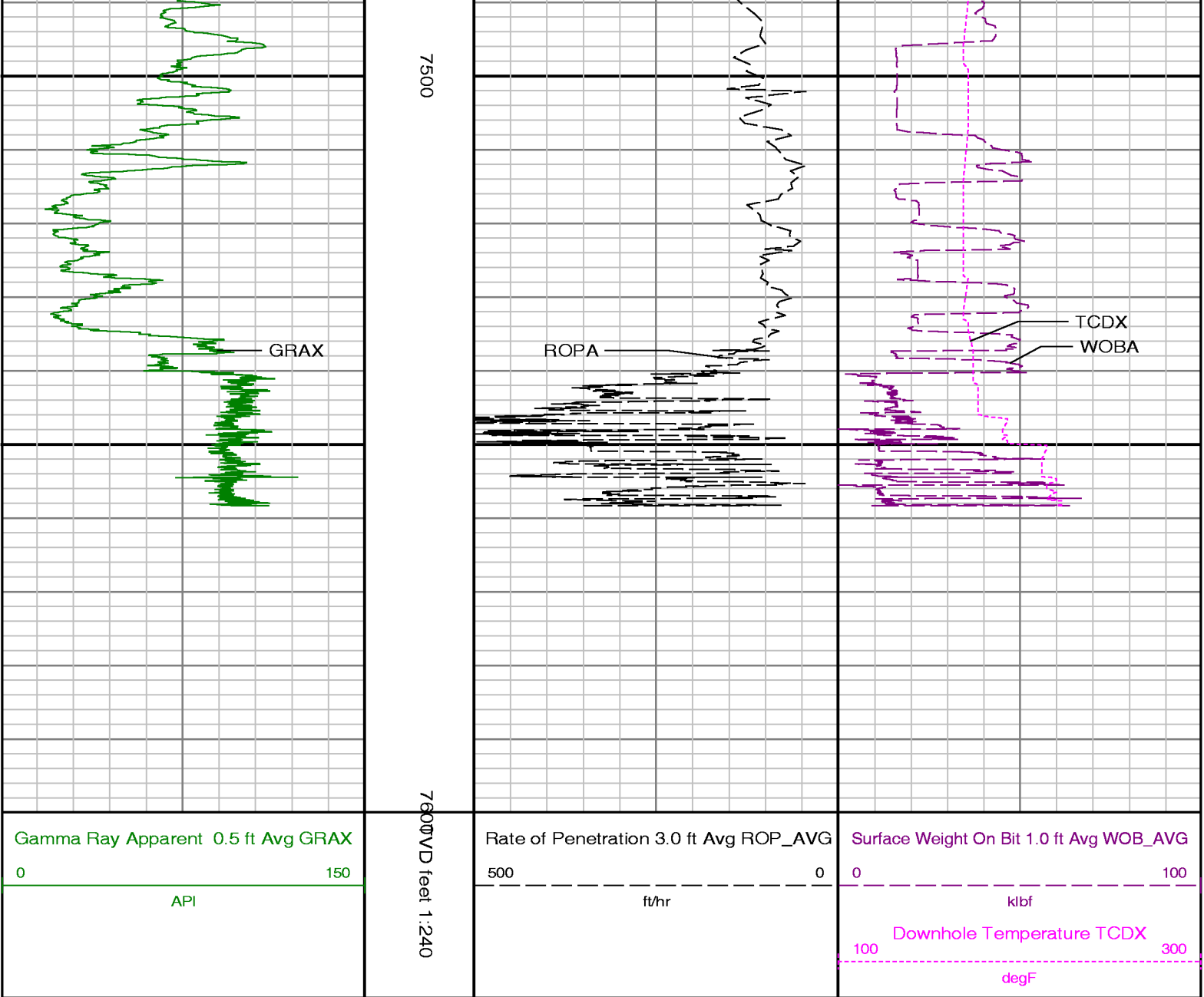




7300

7400





ADVANTAGE Field Survey Listing

Operator : Anadarko	Field : Weld County (Kerr McGee)	API No : 051233918000
Well : Burkhardt 16C-3HZ	Rig : Xtreme 6	Job : 6665938
Wellbore : Burkhardt 16C-3HZ Orig Hole		

Well Origin

Latitude	40.0861 deg	Longitude	-104.7605 deg
North Reference	True	Drill Depth Zero	NULL
Vertical Datum is	Ground Level	Vertical Datum to DDZ	16.00 ft
Vertical Section North	0.00 ft	Vertical Section East	0.00 ft
Vertical Section Azimuth	179.9300 deg	Vertical Section Depth	0.00ft
Grid Convergence	0.0000 deg	Magnetic Declination	8.3500 deg
Total Correction	8.3500 deg	TVD Calculation Method	Minimal Curvature
D-Row Calculation	Magcorr1	Local Magnetic Field	52901 nT
Local Magnetic Dip Angle	66.6100 deg	Local Gravity Field	9.798 m/s^2

Tie	MD	Incl	Azim	North	East	TVD	VS	Incr VS	Crs Len	DLS	Build	Turn
	ft	deg	deg	ft	ft	ft	ft	ft	ft	deg/100ft	deg/100ft	deg/100ft

	0.00	0.0000	0.0000	0.00	0.00	0.00	0.00	0.00	0.00	0.00	0.00	
	16.00	0.0000	269.9000	0.00	0.00	16.00	0.00	0.00	16.00	0.00	0.00	-563.13
	129.00	0.7000	269.9000	-0.00	-0.69	129.00	0.00	0.69	113.00	0.62	0.62	0.00
	208.00	1.0000	267.2000	-0.04	-1.86	207.99	0.03	1.86	79.00	0.38	0.38	-3.42
	285.00	0.5000	278.4000	-0.02	-2.86	284.98	0.02	2.87	77.00	0.67	-0.65	14.55
	365.00	0.4000	207.5000	-0.22	-3.34	364.98	0.21	3.38	80.00	0.66	-0.12	-88.62
	445.00	0.5000	207.1000	-0.77	-3.63	444.98	0.77	4.01	80.00	0.13	0.12	-0.50
	525.00	0.5000	299.2000	-0.92	-4.09	524.98	0.91	4.49	80.00	0.90	0.00	115.13
	605.00	0.7000	276.0000	-0.69	-4.88	604.97	0.69	5.31	80.00	0.39	0.25	-29.00
	685.00	0.1000	244.7000	-0.67	-5.43	684.97	0.67	5.86	80.00	0.77	-0.75	-39.13
	765.00	0.5000	253.7000	-0.80	-5.83	764.97	0.79	6.28	80.00	0.50	0.50	11.25
	845.00	0.4000	336.2000	-0.64	-6.28	844.97	0.64	6.76	80.00	0.75	-0.12	103.13
	925.00	0.4000	258.6000	-0.44	-6.66	924.96	0.43	7.19	80.00	0.63	0.00	-97.00
	1005.00	0.4000	293.2000	-0.39	-7.19	1004.96	0.38	7.72	80.00	0.30	0.00	43.25
	1085.00	0.2000	10.7000	-0.14	-7.42	1084.96	0.13	8.06	80.00	0.51	-0.25	96.87
	1165.00	0.7000	68.0000	0.18	-6.95	1164.96	-0.19	8.64	80.00	0.77	0.62	71.63
	1245.00	0.4000	78.9000	0.42	-6.22	1244.96	-0.42	9.40	80.00	0.40	-0.37	13.63
	1325.00	0.4000	21.9000	0.73	-5.84	1324.95	-0.74	9.89	80.00	0.48	0.00	-71.25
	1405.00	0.7000	23.8000	1.44	-5.54	1404.95	-1.44	10.66	80.00	0.38	0.37	2.37
	1485.00	0.6000	59.9000	2.09	-4.98	1484.94	-2.10	11.52	80.00	0.52	-0.12	45.13
	1565.00	0.7000	47.7000	2.63	-4.25	1564.94	-2.64	12.43	80.00	0.21	0.12	-15.25
	1611.00	0.7000	50.9000	3.00	-3.83	1610.94	-3.00	12.99	46.00	0.08	0.00	6.96
	1698.00	0.7600	49.0100	3.71	-2.98	1697.93	-3.72	14.10	87.00	0.07	0.07	-2.17
	1790.00	2.8200	70.6200	4.86	-0.39	1789.88	-4.86	16.94	92.00	2.32	2.24	23.49
	1881.00	4.2700	51.1300	7.73	4.36	1880.71	-7.73	22.49	91.00	2.05	1.59	-21.42
	1971.00	5.0400	67.5200	11.35	10.63	1970.41	-11.33	29.72	90.00	1.70	0.86	18.21
	2063.00	7.2600	62.5300	15.57	19.52	2061.88	-15.55	39.56	92.00	2.48	2.41	-5.42
	2154.00	8.9100	66.2800	21.06	31.07	2151.97	-21.02	52.35	91.00	1.90	1.81	4.12
	2244.00	11.0200	69.0000	26.95	45.49	2240.61	-26.89	67.92	90.00	2.40	2.34	3.02
	2336.00	12.7500	71.2600	33.36	63.31	2330.63	-33.28	86.87	92.00	1.95	1.88	2.46
	2426.00	14.7200	69.7700	40.51	83.45	2418.06	-40.41	108.23	90.00	2.22	2.19	-1.66
	2517.00	14.3400	69.0100	48.54	104.82	2506.15	-48.41	131.06	91.00	0.47	-0.42	-0.84
	2609.00	13.7700	67.8900	56.74	125.60	2595.39	-56.59	153.40	92.00	0.69	-0.62	-1.22
	2785.00	14.7600	67.2600	73.29	165.68	2765.96	-73.09	196.77	176.00	0.57	0.56	-0.36
	2955.00	13.1500	64.4500	90.01	203.10	2930.94	-89.76	237.75	170.00	1.03	-0.95	-1.65
	3126.00	15.3000	68.3000	106.74	241.62	3096.69	-106.45	279.75	171.00	1.37	1.26	2.25
	3296.00	14.4300	65.6300	123.77	281.76	3261.00	-123.43	323.35	170.00	0.65	-0.51	-1.57
	3467.00	13.1200	63.5900	141.20	318.55	3427.08	-140.81	364.06	171.00	0.82	-0.77	-1.19
	3637.00	13.8800	64.2200	158.65	354.19	3592.38	-158.22	403.74	170.00	0.46	0.45	0.37
	3807.00	15.0200	68.5200	175.59	393.05	3757.01	-175.10	446.14	170.00	0.92	0.67	2.53
	3979.00	12.5400	63.2100	192.17	430.47	3924.05	-191.64	487.06	172.00	1.62	-1.44	-3.09
	4147.00	13.2000	62.5100	209.24	463.76	4087.83	-208.67	524.48	168.00	0.40	0.39	-0.42
	4317.00	14.8100	63.5600	227.88	500.44	4252.77	-227.26	565.62	170.00	0.96	0.95	0.62
	4488.00	16.0000	63.7900	248.02	541.15	4417.63	-247.35	611.04	171.00	0.70	0.70	0.13
	4658.00	12.7100	61.3900	267.32	578.60	4582.30	-266.62	653.17	170.00	1.97	-1.94	-1.41
	4828.00	12.9900	69.2300	283.06	612.89	4748.05	-282.31	690.90	170.00	1.04	0.16	4.61
	4998.00	14.9300	70.9600	296.98	651.46	4913.02	-296.18	731.90	170.00	1.17	1.14	1.02
	5169.00	15.3400	63.2400	314.35	692.48	5078.11	-313.50	776.45	171.00	1.20	0.24	-4.51
	5339.00	13.3700	58.1500	334.85	729.26	5242.80	-333.96	818.56	170.00	1.38	-1.16	-2.99
	5424.00	12.7600	54.7500	345.45	745.27	5325.60	-344.54	837.76	85.00	1.15	-0.72	-4.00
Tie	MD	Incl	Azim	North	East	TVD	VS	Incr VS	Crs Len	DLS	Build	Turn
	ft	deg	deg	ft	ft	ft	ft	ft	ft	deg/100ft	deg/100ft	deg/100ft
	5509.00	10.4000	58.5800	354.87	759.49	5408.87	-353.94	854.82	85.00	2.92	-2.78	4.51
	5594.00	9.2600	59.0100	362.39	771.90	5492.62	-361.45	869.33	85.00	1.34	-1.34	0.51
	5679.00	7.2500	63.3200	368.32	782.56	5576.73	-367.37	881.52	85.00	2.47	-2.36	5.07
	5764.00	6.1500	59.9800	373.01	791.29	5661.15	-372.04	891.44	85.00	1.37	-1.29	-3.93
	5848.00	4.9200	65.0700	376.78	798.45	5744.76	-375.80	899.53	84.00	1.58	-1.46	6.06
	5933.00	2.4400	84.0700	378.50	803.56	5829.58	-377.52	904.92	85.00	3.21	-2.92	22.35
	6018.00	0.1300	163.5600	378.60	805.39	5914.55	-377.61	906.75	85.00	2.85	-2.72	93.52
	6103.00	0.2900	64.7700	378.60	805.61	5999.55	-377.61	906.97	85.00	0.39	0.19	-116.22
	6442.00	0.5000	336.7200	380.32	805.80	6338.55	-379.34	908.71	339.00	0.17	0.06	-25.97
	6698.00	0.6600	144.4000	380.15	806.22	6594.54	-379.16	909.16	256.00	0.45	0.06	65.50
	6952.00	0.1500	340.8800	379.27	806.96	6848.54	-378.29	910.30	254.00	0.32	-0.20	-64.38
	7338.00	0.3500	268.8400	378.43	808.83	7283.54	-378.53	913.55	255.00	0.35	-0.23	-22.23

	7037.00	0.1500	358.0400	379.49	806.92	6933.54	-378.50	910.53	85.00	0.05	0.00	20.19
	7079.00	4.1200	174.2300	378.04	807.07	6975.50	-377.05	911.98	42.00	10.17	9.45	419.50
	7122.00	8.8800	181.3100	373.18	807.15	7018.21	-372.20	916.84	43.00	11.20	11.07	16.47
	7165.00	13.3900	186.0600	364.91	806.55	7060.39	-363.92	925.13	43.00	10.69	10.49	11.05
	7207.00	19.0900	184.5400	353.22	805.49	7100.70	-352.23	936.87	42.00	13.61	13.57	-3.62
	7250.00	25.4000	184.3200	337.00	804.24	7140.48	-336.01	953.14	43.00	14.68	14.67	-0.51
	7293.00	28.3500	180.1700	317.58	803.51	7178.84	-316.60	972.57	43.00	8.13	6.86	-9.65
	7335.00	32.1600	178.9200	296.43	803.69	7215.11	-295.45	993.73	42.00	9.19	9.07	-2.98
	7378.00	35.1500	176.6400	272.62	804.63	7250.90	-271.64	1017.55	43.00	7.55	6.95	-5.30
	7420.00	40.0600	178.0800	247.03	805.80	7284.16	-246.05	1043.17	42.00	11.88	11.69	3.43
	7463.00	45.0400	178.8300	217.97	806.57	7315.83	-216.99	1072.24	43.00	11.64	11.58	1.74
	7506.00	50.8700	179.7100	186.06	806.97	7344.62	-185.07	1104.16	43.00	13.64	13.56	2.05
	7548.00	55.1800	179.7100	152.51	807.14	7369.87	-151.52	1137.70	42.00	10.26	10.26	0.00
	7591.00	59.7800	180.2400	116.26	807.15	7392.98	-115.28	1173.95	43.00	10.75	10.70	1.23
	7633.00	61.2800	181.5100	79.70	806.59	7413.65	-78.72	1210.51	42.00	4.44	3.57	3.02
	7676.00	63.0400	181.6300	41.70	805.54	7433.73	-40.71	1248.53	43.00	4.10	4.09	0.28
	7718.00	64.6500	181.2700	4.01	804.59	7452.24	-3.03	1286.23	42.00	3.91	3.83	-0.86
	7760.00	66.4000	182.0200	-34.20	803.49	7469.64	35.18	1324.46	42.00	4.47	4.17	1.79
	7802.00	68.2500	181.2700	-72.93	802.38	7485.83	73.91	1363.21	42.00	4.70	4.40	-1.79
	7845.00	72.3300	181.3200	-113.40	801.47	7500.33	114.37	1403.68	43.00	9.49	9.49	0.12
	7887.00	74.8100	181.0400	-153.67	800.64	7512.21	154.65	1443.96	42.00	5.94	5.90	-0.67
	7930.00	77.0100	181.2900	-195.36	799.79	7522.68	196.34	1485.67	43.00	5.15	5.12	0.58
	7972.00	80.5300	180.0000	-236.55	799.33	7530.85	237.53	1526.85	42.00	8.91	8.38	-3.07
	8018.00	83.9900	179.3300	-282.12	799.60	7537.05	283.10	1572.43	46.00	7.66	7.52	-1.46
	8071.00	88.5200	179.6700	-334.99	800.06	7540.51	335.97	1625.30	53.00	8.57	8.55	0.64
	8156.00	88.5800	180.1100	-419.97	800.22	7542.66	420.94	1710.27	85.00	0.52	0.07	0.52
	8241.00	88.8900	179.4600	-504.94	800.54	7544.54	505.92	1795.25	85.00	0.85	0.36	-0.76
	8327.00	89.2200	180.6400	-590.93	800.46	7545.95	591.91	1881.24	86.00	1.42	0.38	1.37
	8412.00	90.8300	180.5000	-675.92	799.62	7545.92	676.90	1966.24	85.00	1.90	1.89	-0.16
	8497.00	90.3100	180.7200	-760.91	798.71	7545.07	761.89	2051.23	85.00	0.66	-0.61	0.26
	8583.00	90.8600	179.9600	-846.91	798.20	7544.19	847.88	2137.23	86.00	1.09	0.64	-0.88
	8667.00	89.6900	179.2900	-930.90	798.75	7543.79	931.88	2221.22	84.00	1.61	-1.39	-0.80
	8753.00	89.7500	177.5500	-1016.87	801.12	7544.21	1017.84	2307.22	86.00	2.02	0.07	-2.02
	8837.00	89.8700	178.5700	-1100.82	803.97	7544.49	1101.80	2391.22	84.00	1.22	0.14	1.21
	8923.00	88.2700	177.5100	-1186.75	806.91	7545.89	1187.73	2477.20	86.00	2.23	-1.86	-1.23
	9008.00	88.6900	179.2200	-1271.68	809.33	7548.14	1272.67	2562.17	85.00	2.07	0.49	2.01
	9093.00	90.4600	179.7200	-1356.67	810.12	7548.77	1357.66	2647.16	85.00	2.16	2.08	0.59
	9178.00	91.2300	180.4900	-1441.66	809.96	7547.52	1442.65	2732.15	85.00	1.28	0.91	0.91
	9263.00	88.8200	179.1600	-1526.65	810.22	7547.48	1527.64	2817.14	85.00	3.24	-2.84	-1.56
Tie	MD ft	Incl deg	Azim deg	North ft	East ft	TVD ft	VS ft	Incr VS ft	Crs Len ft	DLS deg/100ft	Build deg/100ft	Turn deg/100ft
	9349.00	88.8200	178.8700	-1612.62	811.70	7549.25	1613.61	2903.13	86.00	0.34	0.00	-0.34
	9432.00	90.1800	179.0700	-1695.60	813.19	7549.98	1696.60	2986.12	83.00	1.66	1.64	0.24
	9518.00	91.5100	180.0100	-1781.59	813.88	7548.71	1782.58	3072.11	86.00	1.89	1.55	1.09
	9602.00	88.7900	178.7800	-1865.57	814.77	7548.49	1866.57	3156.10	84.00	3.55	-3.24	-1.46
	9688.00	90.0000	179.1400	-1951.55	816.33	7549.40	1952.55	3242.09	86.00	1.47	1.41	0.42
	9773.00	90.9300	179.1900	-2036.54	817.57	7548.71	2037.54	3327.09	85.00	1.10	1.09	0.06
	9858.00	91.5100	179.9100	-2121.52	818.24	7546.90	2122.52	3412.07	85.00	1.09	0.68	0.85
	9944.00	89.6300	181.4600	-2207.50	817.21	7546.04	2208.50	3498.06	86.00	2.83	-2.19	1.80
	10029.00	91.6300	182.7000	-2292.43	814.12	7545.11	2293.43	3583.05	85.00	2.77	2.35	1.46
	10114.00	91.8200	183.0100	-2377.29	809.89	7542.55	2378.28	3668.01	85.00	0.43	0.22	0.36
	10199.00	91.4200	183.4000	-2462.12	805.14	7540.14	2463.10	3752.97	85.00	0.66	-0.47	0.46
	10285.00	88.6400	182.0500	-2548.01	801.05	7540.10	2548.99	3838.96	86.00	3.59	-3.23	-1.57
	10370.00	89.1900	180.5400	-2632.98	799.13	7541.71	2633.95	3923.94	85.00	1.89	0.65	-1.78
	10455.00	89.0100	180.4900	-2717.96	798.37	7543.04	2718.93	4008.93	85.00	0.22	-0.21	-0.06
	10540.00	88.3600	180.1700	-2802.94	797.88	7544.99	2803.91	4093.91	85.00	0.85	-0.76	-0.38
	10625.00	86.8300	180.3200	-2887.86	797.52	7548.56	2888.83	4178.83	85.00	1.81	-1.80	0.18
	10710.00	88.2300	179.6600	-2972.78	797.53	7552.22	2973.75	4263.75	85.00	1.82	1.65	-0.78
	10795.00	89.2300	180.1400	-3057.75	797.68	7554.11	3058.73	4348.73	85.00	1.30	1.18	0.56
	10881.00	90.5500	179.3200	-3143.75	798.08	7554.27	3144.72	4434.73	86.00	1.81	1.53	-0.95
	10966.00	90.0600	180.8600	-3228.75	797.95	7553.82	3229.72	4519.72	85.00	1.90	-0.58	1.81
	11051.00	89.3500	178.4900	-3313.74	798.43	7554.26	3314.71	4604.72	85.00	2.91	-0.84	-2.79
	11136.00	88.4200	177.4500	-3398.67	801.44	7555.91	3399.64	4689.70	85.00	1.64	-1.09	-1.22
	11222.00	89.5600	177.9400	-3484.58	804.99	7557.42	3485.56	4775.68	86.00	1.44	1.32	0.57

11222.00	89.3600	177.9400	-3484.38	804.90	7557.43	3483.36	4775.68	85.00	1.44	1.33	0.37
11307.00	90.4000	178.9700	-3569.55	807.19	7557.46	3570.53	4860.68	85.00	1.56	0.99	1.21
11391.00	89.9600	178.4200	-3653.53	809.11	7557.19	3654.51	4944.68	84.00	0.84	-0.52	-0.65
11476.00	89.2800	177.8100	-3738.48	811.90	7557.76	3739.47	5029.68	85.00	1.07	-0.80	-0.72
11561.00	89.9600	179.5700	-3823.45	813.85	7558.32	3824.44	5114.67	85.00	2.22	0.80	2.07
11646.00	90.2700	179.8400	-3908.45	814.28	7558.15	3909.44	5199.67	85.00	0.48	0.36	0.32
11731.00	91.3600	179.8500	-3993.44	814.51	7556.94	3994.43	5284.66	85.00	1.28	1.28	0.01
11816.00	91.1400	180.6100	-4078.42	814.17	7555.09	4079.41	5369.64	85.00	0.93	-0.26	0.89
11902.00	90.8000	179.7300	-4164.40	813.92	7553.63	4165.39	5455.63	86.00	1.10	-0.40	-1.02
11936.00	90.3300	179.7700	-4198.40	814.07	7553.30	4199.39	5489.62	34.00	1.39	-1.38	0.12
Projection to TD:											
11987.00	90.3300	179.7700	-4249.40	814.27	7553.00	4250.39	5540.62	51.00	0.00	0.00	0.00