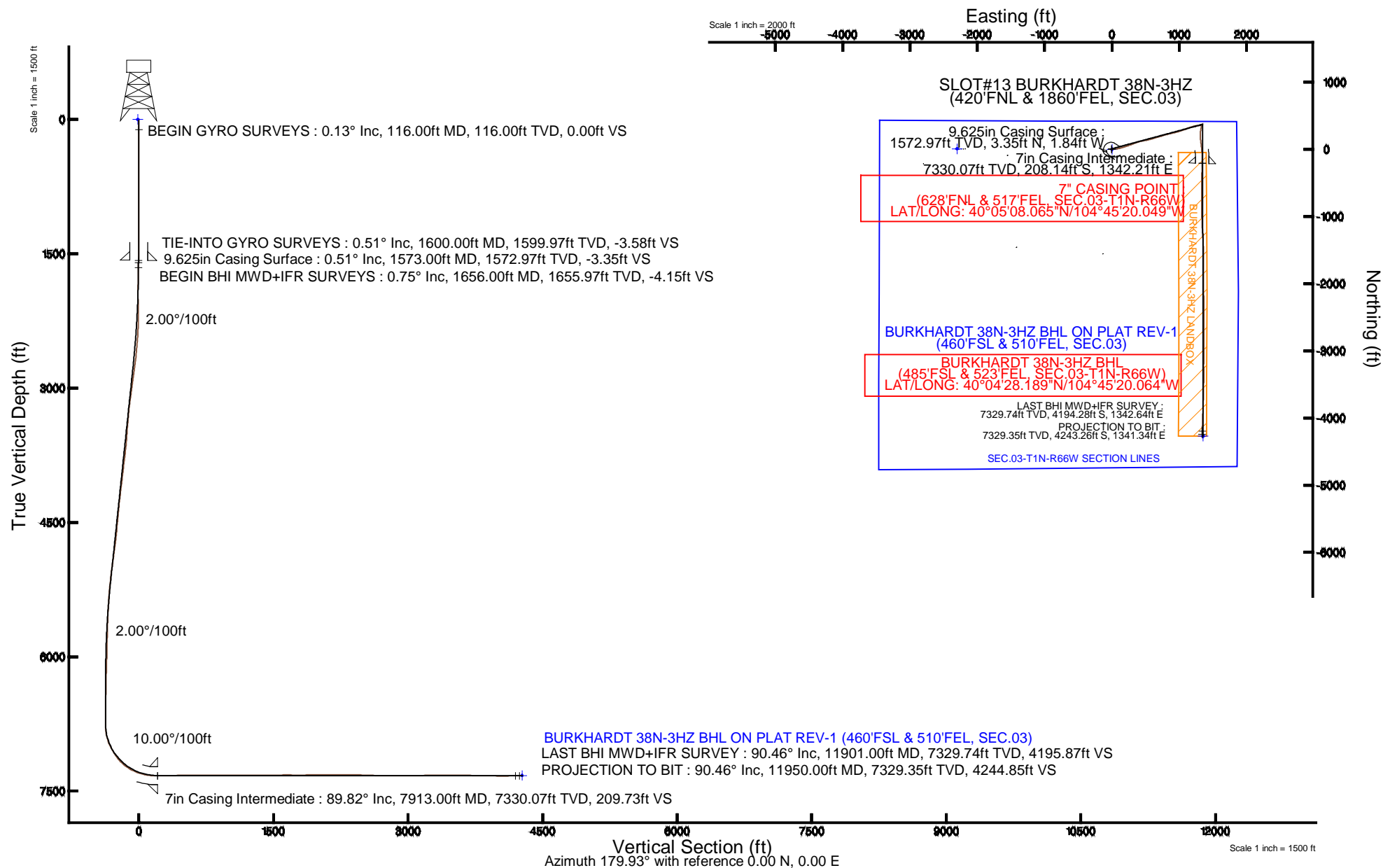


# KERR-MCGEE OIL & GAS ONSHORE LP

Location: COLORADO Slot: SLOT#13 BURKHARDT 38N-3HZ (420'FNL & 1860'FEL, SEC.03)  
 Field: WELD COUNTY (KERR MCGEE) Well: BURKHARDT 38N-3HZ  
 Facility: SEC.03-T1N-R66W Wellbore: BURKHARDT 38N-3HZ PWB



Plot reference wellpath is BURKHARDT 38N-3HZ (REV-A.0) PWP	
True vertical depths are referenced to XTREME 6 (16KB) (RKB)	Grid System: NAD83 / Lambert Colorado SP, Northern Zone (501), US feet
Measured depths are referenced to XTREME 6 (16KB) (RKB)	North Reference: True north
XTREME 6 (16KB) (RKB) to Mean Sea Level: 5076 feet	Scale: True distance
Mean Sea Level to Mud line (At Slot: SLOT#13 BURKHARDT 38N-3HZ (420'FNL & 1860'FEL, SEC.03)): 0 feet	Depths are in feet
Coordinates are in feet referenced to Slot	Created by: amarcar on 10/13/2014



# Actual Wellpath Report

BURKHARDT 38N-3HZ AWP

Page 1 of 6

## REFERENCE WELLPATH IDENTIFICATION

Operator	KERR-MCGEE OIL & GAS ONSHORE LP	Slot	SLOT#13 BURKHARDT 38N-3HZ (420'FNL & 1860'FEL, SEC.03)
Area	COLORADO	Well	BURKHARDT 38N-3HZ
Field	WELD COUNTY (KERR MCGEE)	Wellbore	BURKHARDT 38N-3HZ AWB
Facility	SEC.03-T1N-R66W		

## REPORT SETUP INFORMATION

Projection System	NAD83 / Lambert Colorado SP, Northern Zone (501), US feet	Software System	WellArchitect® 4.0.0
North Reference	True	User	Amarcar
Scale	0.999961	Report Generated	10/13/2014 at 3:23:20 PM
Convergence at slot	n/a	Database/Source file	WellArchitectDB/BURKHARDT_38N-3HZ_AWB.xml

## WELLPATH LOCATION

	Local coordinates		Grid coordinates		Geographic coordinates	
	North[ft]	East[ft]	Easting[US ft]	Northing[US ft]	Latitude	Longitude
Slot Location	-8.09	2299.74	3206946.95	1275090.42	40°05'10.122"N	104°45'37.318"W
Facility Reference Pt			3204647.32	1275079.54	40°05'10.203"N	104°46'06.906"W
Field Reference Pt			3197771.84	1268891.29	40°04'09.600"N	104°47'36.000"W

## WELLPATH DATUM

Calculation method	Minimum curvature	XTREME 6 (16'KB) (RKB) to Facility Vertical Datum	5076.00ft
Horizontal Reference Pt	Slot	XTREME 6 (16'KB) (RKB) to Mean Sea Level	5076.00ft
Vertical Reference Pt	XTREME 6 (16'KB) (RKB)	XTREME 6 (16'KB) (RKB) to Mud Line at Slot (SLOT#13 BURKHARDT 38N-3HZ (420'FNL & 1860'FEL, SEC.03))	5076.00ft
MD Reference Pt	XTREME 6 (16'KB) (RKB)	Section Origin	N 0.00, E 0.00 ft
Field Vertical Reference	Mean Sea Level	Section Azimuth	179.93°

# Actual Wellpath Report

BURKHARDT 38N-3HZ AWP

Page 2 of 6

REFERENCE WELLPATH IDENTIFICATION			
Operator	KERR-MCGEE OIL & GAS ONSHORE LP	Slot	SLOT#13 BURKHARDT 38N-3HZ (420'FNL & 1860'FEL, SEC.03)
Area	COLORADO	Well	BURKHARDT 38N-3HZ
Field	WELD COUNTY (KERR MCGEE)	Wellbore	BURKHARDT 38N-3HZ AWP
Facility	SEC.03-T1N-R66W		

WELLPATH DATA (133 stations) † = interpolated/extrapolated station										
MD [ft]	Inclination [°]	Azimuth [°]	TVD [ft]	Vert Sect [ft]	North [ft]	East [ft]	Latitude	Longitude	DLS [°/100ft]	Comments
0.00†	0.000	270.990	0.00	0.00	0.00	0.00	40°05'10.122"N	104°45'37.318"W	0.00	
16.00	0.000	270.990	16.00	0.00	0.00	0.00	40°05'10.122"N	104°45'37.318"W	0.00	
116.00	0.130	270.990	116.00	0.00	0.00	-0.11	40°05'10.122"N	104°45'37.319"W	0.13	BEGIN GYRO SURVEYS
216.00	0.140	328.710	216.00	-0.11	0.11	-0.29	40°05'10.123"N	104°45'37.322"W	0.13	
316.00	0.360	301.380	316.00	-0.38	0.38	-0.62	40°05'10.126"N	104°45'37.326"W	0.24	
416.00	0.680	323.480	415.99	-1.02	1.02	-1.24	40°05'10.132"N	104°45'37.334"W	0.37	
516.00	0.690	324.890	515.99	-1.99	1.99	-1.94	40°05'10.142"N	104°45'37.343"W	0.02	
616.00	0.360	324.690	615.98	-2.74	2.74	-2.47	40°05'10.149"N	104°45'37.350"W	0.33	
716.00	0.150	280.480	715.98	-3.02	3.02	-2.78	40°05'10.152"N	104°45'37.354"W	0.27	
816.00	0.190	165.600	815.98	-2.88	2.88	-2.87	40°05'10.150"N	104°45'37.355"W	0.29	
916.00	0.220	159.900	915.98	-2.54	2.54	-2.76	40°05'10.147"N	104°45'37.354"W	0.04	
1016.00	0.310	160.950	1015.98	-2.10	2.10	-2.61	40°05'10.143"N	104°45'37.352"W	0.09	
1116.00	0.100	160.410	1115.98	-1.77	1.76	-2.49	40°05'10.139"N	104°45'37.350"W	0.21	
1216.00	0.140	103.650	1215.98	-1.66	1.65	-2.34	40°05'10.138"N	104°45'37.348"W	0.12	
1316.00	0.170	91.800	1315.98	-1.62	1.62	-2.07	40°05'10.138"N	104°45'37.345"W	0.04	
1416.00	0.450	353.560	1415.98	-2.01	2.00	-1.97	40°05'10.142"N	104°45'37.343"W	0.50	
1516.00	0.520	9.340	1515.97	-2.85	2.84	-1.94	40°05'10.150"N	104°45'37.343"W	0.15	
1600.00	0.510	15.110	1599.97	-3.58	3.58	-1.78	40°05'10.157"N	104°45'37.341"W	0.06	TIE-INTO GYRO SURVEYS
1656.00	0.750	332.800	1655.97	-4.15	4.15	-1.88	40°05'10.163"N	104°45'37.342"W	0.91	BEGIN BHI MWD+IFR SURVEYS
1703.00	1.450	2.670	1702.96	-5.02	5.01	-2.00	40°05'10.172"N	104°45'37.344"W	1.88	
1794.00	2.190	41.190	1793.92	-7.47	7.47	-0.80	40°05'10.196"N	104°45'37.328"W	1.53	
1885.00	3.830	81.160	1884.80	-9.24	9.25	3.35	40°05'10.213"N	104°45'37.275"W	2.82	
1976.00	7.610	96.150	1975.33	-9.06	9.07	12.35	40°05'10.212"N	104°45'37.159"W	4.43	
2068.00	9.420	97.240	2066.31	-7.44	7.47	25.88	40°05'10.196"N	104°45'36.985"W	1.98	
2158.00	10.740	93.040	2154.92	-6.05	6.10	41.56	40°05'10.182"N	104°45'36.783"W	1.68	
2249.00	13.520	87.670	2243.89	-6.01	6.08	60.66	40°05'10.182"N	104°45'36.538"W	3.29	
2339.00	14.370	81.080	2331.24	-8.14	8.24	82.20	40°05'10.203"N	104°45'36.260"W	2.00	
2430.00	15.560	77.050	2419.15	-12.60	12.72	105.26	40°05'10.248"N	104°45'35.964"W	1.74	
2522.00	16.660	72.300	2507.54	-19.35	19.50	129.85	40°05'10.315"N	104°45'35.647"W	1.87	
2613.00	18.230	74.430	2594.35	-27.10	27.29	155.99	40°05'10.392"N	104°45'35.311"W	1.86	
2698.00	19.570	72.540	2674.77	-34.91	35.13	182.38	40°05'10.469"N	104°45'34.972"W	1.73	
2782.00	21.690	70.030	2753.38	-44.40	44.65	210.39	40°05'10.563"N	104°45'34.611"W	2.73	
2867.00	23.000	70.920	2832.00	-55.16	55.44	240.85	40°05'10.670"N	104°45'34.219"W	1.59	
2953.00	22.300	69.690	2911.36	-66.28	66.60	272.03	40°05'10.780"N	104°45'33.818"W	0.98	
3038.00	20.420	68.350	2990.52	-77.31	77.67	300.94	40°05'10.890"N	104°45'33.446"W	2.28	
3123.00	20.990	69.510	3070.03	-88.08	88.47	328.98	40°05'10.996"N	104°45'33.085"W	0.83	
3208.00	22.730	72.110	3148.92	-98.42	98.84	358.87	40°05'11.099"N	104°45'32.701"W	2.34	
3293.00	21.510	71.210	3227.66	-108.45	108.91	389.25	40°05'11.198"N	104°45'32.310"W	1.49	
3378.00	20.970	77.040	3306.90	-116.84	117.34	418.83	40°05'11.282"N	104°45'31.929"W	2.56	
3463.00	23.070	79.260	3385.69	-123.32	123.85	450.02	40°05'11.346"N	104°45'31.528"W	2.66	
3548.00	21.360	79.250	3464.38	-129.27	129.85	481.59	40°05'11.405"N	104°45'31.122"W	2.01	
3633.00	22.780	80.910	3543.15	-134.72	135.33	513.05	40°05'11.459"N	104°45'30.717"W	1.82	
3718.00	21.250	74.350	3621.96	-141.44	142.09	544.14	40°05'11.526"N	104°45'30.317"W	3.40	
3803.00	21.340	74.050	3701.16	-149.81	150.50	573.84	40°05'11.609"N	104°45'29.935"W	0.17	
3888.00	22.030	72.350	3780.15	-158.86	159.58	603.90	40°05'11.699"N	104°45'29.548"W	1.10	

# Actual Wellpath Report

BURKHARDT 38N-3HZ AWP

Page 3 of 6

## REFERENCE WELLPATH IDENTIFICATION

Operator	KERR-MCGEE OIL & GAS ONSHORE LP	Slot	SLOT#13 BURKHARDT 38N-3HZ (420'FNL & 1860'FEL, SEC.03)
Area	COLORADO	Well	BURKHARDT 38N-3HZ
Field	WELD COUNTY (KERR MCGEE)	Wellbore	BURKHARDT 38N-3HZ AWP
Facility	SEC.03-T1N-R66W		

## WELLPATH DATA (133 stations)

MD [ft]	Inclination [°]	Azimuth [°]	TVD [ft]	Vert Sect [ft]	North [ft]	East [ft]	Latitude	Longitude	DLS [°/100ft]	Comments
3974.00	23.350	73.570	3859.49	-168.54	169.29	635.62	40°05'11.795"N	104°45'29.140"W	1.63	
4059.00	21.710	73.390	3938.00	-177.76	178.55	666.85	40°05'11.886"N	104°45'28.738"W	1.93	
4144.00	21.830	74.640	4016.94	-186.40	187.23	697.15	40°05'11.972"N	104°45'28.349"W	0.56	
4230.00	23.260	72.730	4096.36	-195.64	196.51	728.79	40°05'12.064"N	104°45'27.941"W	1.87	
4315.00	21.810	71.420	4174.87	-205.62	206.52	759.78	40°05'12.163"N	104°45'27.543"W	1.81	
4400.00	22.800	74.960	4253.51	-214.89	215.83	790.66	40°05'12.253"N	104°45'27.145"W	1.96	
4485.00	24.100	76.960	4331.49	-223.04	224.02	823.47	40°05'12.336"N	104°45'26.723"W	1.79	
4571.00	23.910	77.320	4410.06	-230.79	231.80	857.58	40°05'12.413"N	104°45'26.284"W	0.28	
4655.00	22.740	76.980	4487.19	-238.14	239.20	890.01	40°05'12.486"N	104°45'25.867"W	1.40	
4739.00	20.960	77.160	4565.15	-245.10	246.19	920.47	40°05'12.555"N	104°45'25.475"W	2.12	
4824.00	21.750	74.630	4644.32	-252.62	253.75	950.48	40°05'12.629"N	104°45'25.089"W	1.43	
4909.00	23.890	73.350	4722.66	-261.69	262.85	982.16	40°05'12.719"N	104°45'24.682"W	2.58	
4995.00	23.170	71.540	4801.51	-272.00	273.20	1014.90	40°05'12.822"N	104°45'24.260"W	1.19	
5080.00	21.980	71.190	4879.99	-282.38	283.63	1045.82	40°05'12.925"N	104°45'23.863"W	1.41	
5165.00	20.940	69.420	4959.10	-292.82	294.09	1075.09	40°05'13.028"N	104°45'23.486"W	1.44	
5250.00	20.020	68.700	5038.73	-303.41	304.72	1102.87	40°05'13.133"N	104°45'23.128"W	1.12	
5335.00	18.200	70.340	5119.04	-313.13	314.47	1128.93	40°05'13.229"N	104°45'22.793"W	2.23	
5420.00	16.430	67.470	5200.19	-322.18	323.54	1152.54	40°05'13.319"N	104°45'22.489"W	2.31	
5506.00	14.420	72.140	5283.09	-330.10	331.49	1173.97	40°05'13.398"N	104°45'22.214"W	2.75	
5591.00	14.640	77.850	5365.37	-335.58	337.00	1194.54	40°05'13.452"N	104°45'21.949"W	1.70	
5678.00	13.730	77.110	5449.72	-340.17	341.61	1215.35	40°05'13.498"N	104°45'21.681"W	1.07	
5763.00	12.330	76.590	5532.53	-344.50	345.97	1234.02	40°05'13.541"N	104°45'21.441"W	1.65	
5849.00	12.030	81.690	5616.60	-347.91	349.39	1251.82	40°05'13.574"N	104°45'21.212"W	1.30	
5933.00	11.190	81.490	5698.88	-350.36	351.87	1268.54	40°05'13.599"N	104°45'20.997"W	1.00	
6018.00	9.310	81.210	5782.52	-352.61	354.14	1283.49	40°05'13.621"N	104°45'20.805"W	2.21	
6104.00	9.640	83.820	5867.34	-354.43	355.98	1297.53	40°05'13.639"N	104°45'20.624"W	0.63	
6189.00	8.270	81.200	5951.31	-356.12	357.68	1310.64	40°05'13.656"N	104°45'20.455"W	1.68	
6274.00	7.010	75.040	6035.55	-358.38	359.95	1321.70	40°05'13.679"N	104°45'20.313"W	1.77	
6359.00	5.660	71.060	6120.03	-361.07	362.65	1330.67	40°05'13.705"N	104°45'20.198"W	1.67	
6444.00	4.280	62.910	6204.71	-363.87	365.46	1337.46	40°05'13.733"N	104°45'20.110"W	1.82	
6529.00	3.580	57.830	6289.51	-366.72	368.31	1342.53	40°05'13.761"N	104°45'20.045"W	0.92	
6614.00	1.990	97.030	6374.41	-367.95	369.55	1346.24	40°05'13.774"N	104°45'19.997"W	2.82	
6699.00	1.280	39.520	6459.38	-368.50	370.10	1348.31	40°05'13.779"N	104°45'19.971"W	1.99	
6784.00	0.740	10.670	6544.37	-369.77	371.37	1349.02	40°05'13.792"N	104°45'19.962"W	0.85	
6869.00	0.920	345.850	6629.36	-370.97	372.57	1348.95	40°05'13.803"N	104°45'19.962"W	0.47	
6956.00	1.040	327.900	6716.35	-372.32	373.92	1348.36	40°05'13.817"N	104°45'19.970"W	0.38	
6999.00	1.210	222.210	6759.35	-372.31	373.91	1347.85	40°05'13.817"N	104°45'19.977"W	4.18	
7041.00	4.640	206.800	6801.28	-370.47	372.07	1346.79	40°05'13.798"N	104°45'19.990"W	8.31	
7084.00	9.760	218.830	6843.93	-366.08	367.67	1343.71	40°05'13.755"N	104°45'20.030"W	12.35	
7126.00	14.370	212.840	6885.00	-358.93	360.51	1338.65	40°05'13.684"N	104°45'20.095"W	11.36	
7169.00	19.060	201.850	6926.18	-347.92	349.51	1333.14	40°05'13.576"N	104°45'20.166"W	13.11	
7211.00	22.720	192.520	6965.42	-333.64	335.21	1328.83	40°05'13.434"N	104°45'20.221"W	11.75	
7254.00	25.870	192.880	7004.61	-316.38	317.96	1324.94	40°05'13.264"N	104°45'20.271"W	7.33	
7296.00	29.720	188.590	7041.76	-297.15	298.72	1321.34	40°05'13.074"N	104°45'20.318"W	10.32	
7339.00	32.720	185.890	7078.53	-275.05	276.62	1318.55	40°05'12.855"N	104°45'20.354"W	7.70	

### REFERENCE WELLPATH IDENTIFICATION

Operator	KERR-MCGEE OIL & GAS ONSHORE LP	Slot	SLOT#13 BURKHARDT 38N-3HZ (420'FNL & 1860'FEL, SEC.03)
Area	COLORADO	Well	BURKHARDT 38N-3HZ
Field	WELD COUNTY (KERR MCGEE)	Wellbore	BURKHARDT 38N-3HZ AWP
Facility	SEC.03-T1N-R66W		

### WELLPATH DATA (133 stations) † = interpolated/extrapolated station

MD [ft]	Inclination [°]	Azimuth [°]	TVD [ft]	Vert Sect [ft]	North [ft]	East [ft]	Latitude	Longitude	DLS [°/100ft]	Comments
7382.00	35.750	185.560	7114.08	-250.99	252.55	1316.14	40°05'12.617"N	104°45'20.385"W	7.06	
7424.00	40.410	181.700	7147.13	-225.15	226.71	1314.55	40°05'12.362"N	104°45'20.405"W	12.45	
7466.00	44.920	179.870	7178.01	-196.70	198.26	1314.18	40°05'12.081"N	104°45'20.410"W	11.14	
7509.00	50.620	176.500	7206.90	-164.90	166.46	1315.23	40°05'11.767"N	104°45'20.396"W	14.47	
7551.00	55.120	172.290	7232.25	-131.59	133.16	1318.53	40°05'11.438"N	104°45'20.354"W	13.36	
7594.00	60.480	171.090	7255.16	-95.60	97.17	1323.80	40°05'11.082"N	104°45'20.286"W	12.69	
7636.00	65.390	175.440	7274.27	-58.47	60.05	1328.15	40°05'10.715"N	104°45'20.230"W	14.89	
7679.00	69.290	174.250	7290.84	-18.96	20.54	1331.72	40°05'10.325"N	104°45'20.184"W	9.42	
7721.00	72.250	174.800	7304.67	20.52	-18.93	1335.50	40°05'09.935"N	104°45'20.136"W	7.16	
7764.00	77.990	175.550	7315.71	61.92	-60.33	1339.00	40°05'09.525"N	104°45'20.091"W	13.45	
7806.00	81.620	175.670	7323.14	103.13	-101.54	1342.16	40°05'09.118"N	104°45'20.050"W	8.65	
7849.00	85.650	179.570	7327.91	145.81	-144.22	1343.93	40°05'08.696"N	104°45'20.027"W	13.00	
7881.00	88.390	182.190	7329.57	177.76	-176.16	1343.44	40°05'08.381"N	104°45'20.034"W	11.84	
7913.00†	89.825	182.190	7330.07	209.73	-208.14	1342.21	40°05'08.065"N	104°45'20.049"W	4.48	7" CASING POINT
7943.00	91.170	182.190	7329.81	239.70	-238.11	1341.07	40°05'07.769"N	104°45'20.064"W	4.48	
7987.00	91.450	181.530	7328.80	283.67	-282.08	1339.64	40°05'07.334"N	104°45'20.083"W	1.63	
8073.00	91.390	181.600	7326.67	369.61	-368.02	1337.29	40°05'06.485"N	104°45'20.113"W	0.11	
8158.00	91.360	181.150	7324.63	454.55	-452.97	1335.25	40°05'05.645"N	104°45'20.139"W	0.53	
8243.00	91.820	181.380	7322.27	539.50	-537.92	1333.38	40°05'04.806"N	104°45'20.163"W	0.61	
8328.00	90.460	179.920	7320.58	624.47	-622.89	1332.41	40°05'03.966"N	104°45'20.176"W	2.35	
8413.00	89.410	179.460	7320.68	709.47	-707.89	1332.87	40°05'03.126"N	104°45'20.170"W	1.35	
8583.00	90.300	179.250	7321.11	879.46	-877.87	1334.79	40°05'01.446"N	104°45'20.146"W	0.54	
8754.00	90.090	177.910	7320.53	1050.40	-1048.82	1339.02	40°04'59.757"N	104°45'20.091"W	0.79	
8924.00	88.830	177.180	7322.13	1220.24	-1218.65	1346.30	40°04'58.079"N	104°45'19.998"W	0.86	
9094.00	90.680	176.560	7322.85	1389.99	-1388.38	1355.59	40°04'56.401"N	104°45'19.878"W	1.15	
9265.00	90.730	179.070	7320.75	1560.85	-1559.23	1362.10	40°04'54.713"N	104°45'19.795"W	1.47	
9434.00	89.320	182.200	7320.68	1729.81	-1728.20	1360.23	40°04'53.043"N	104°45'19.819"W	2.03	
9606.00	91.290	178.640	7319.76	1901.77	-1900.15	1358.97	40°04'51.344"N	104°45'19.835"W	2.37	
9776.00	90.580	178.750	7316.99	2071.70	-2070.09	1362.84	40°04'49.665"N	104°45'19.785"W	0.42	
9947.00	90.030	179.660	7316.08	2242.68	-2241.07	1365.21	40°04'47.975"N	104°45'19.755"W	0.62	
10117.00	88.360	179.450	7318.47	2412.66	-2411.04	1366.53	40°04'46.295"N	104°45'19.738"W	0.99	
10287.00	87.820	178.580	7324.13	2582.54	-2580.92	1369.45	40°04'44.617"N	104°45'19.701"W	0.60	
10458.00	89.410	180.380	7328.26	2753.47	-2751.85	1371.01	40°04'42.927"N	104°45'19.681"W	1.40	
10628.00	90.430	181.050	7328.50	2923.45	-2921.83	1368.88	40°04'41.248"N	104°45'19.708"W	0.72	
10798.00	90.710	181.100	7326.81	3093.41	-3091.79	1365.69	40°04'39.568"N	104°45'19.749"W	0.17	
10969.00	91.240	179.540	7323.90	3264.37	-3262.76	1364.74	40°04'37.878"N	104°45'19.762"W	0.96	
11139.00	90.610	180.300	7321.16	3434.35	-3432.73	1364.98	40°04'36.199"N	104°45'19.759"W	0.58	
11309.00	88.270	181.680	7322.82	3604.30	-3602.68	1362.04	40°04'34.519"N	104°45'19.797"W	1.60	
11479.00	88.950	181.970	7326.94	3774.15	-3772.55	1356.63	40°04'32.841"N	104°45'19.867"W	0.43	
11649.00	89.040	181.860	7329.92	3944.03	-3942.43	1350.95	40°04'31.162"N	104°45'19.940"W	0.08	
11819.00	90.580	182.030	7330.49	4113.91	-4112.32	1345.18	40°04'29.483"N	104°45'20.014"W	0.91	
11901.00	90.460	181.520	7329.74	4195.87	-4194.28	1342.64	40°04'28.673"N	104°45'20.047"W	0.64	LAST BHI MWD+IFR SURVEY
11950.00	90.460	181.520	7329.35	4244.85	-4243.26	1341.34	40°04'28.189"N	104°45'20.064"W	0.00	PROJECTION TO BIT

# Actual Wellpath Report

BURKHARDT 38N-3HZ AWP

Page 5 of 6

## REFERENCE WELLPATH IDENTIFICATION

Operator	KERR-MCGEE OIL & GAS ONSHORE LP	Slot	SLOT#13 BURKHARDT 38N-3HZ (420'FNL & 1860'FEL, SEC.03)
Area	COLORADO	Well	BURKHARDT 38N-3HZ
Field	WELD COUNTY (KERR MCGEE)	Wellbore	BURKHARDT 38N-3HZ AWB
Facility	SEC.03-T1N-R66W		

## HOLE & CASING SECTIONS - Ref Wellbore: BURKHARDT 38N-3HZ AWB Ref Wellpath: BURKHARDT 38N-3HZ AWP

String/Diameter	Start MD [ft]	End MD [ft]	Interval [ft]	Start TVD [ft]	End TVD [ft]	Start N/S [ft]	Start E/W [ft]	End N/S [ft]	End E/W [ft]
13.5in Open Hole	16.00	1655.00	1639.00	16.00	1654.97	0.00	0.00	4.13	-1.88
9.625in Casing Surface	16.00	1573.00	1557.00	16.00	1572.97	0.00	0.00	3.35	-1.84
8.75in Open Hole	1655.00	7923.00	6268.00	1654.97	7330.06	4.13	-1.88	-218.13	1341.83
7in Casing Intermediate	16.00	7913.00	7897.00	16.00	7330.07	0.00	0.00	-208.14	1342.21
6.125in Open Hole	7923.00	11950.00	4027.00	7330.06	7329.35	-218.13	1341.83	-4243.26	1341.34

## TARGETS

Name	MD [ft]	TVD [ft]	North [ft]	East [ft]	Grid East [US ft]	Grid North [US ft]	Latitude	Longitude	Shape
SEC.03-T1N-R66W SECTION LINES		0.00	8.30	-2299.74	3204647.31	1275079.54	40°05'10.203"N	104°46'06.906"W	polygon
BURKHARDT 38N-3HZ BHL ON PLAT REV-1 (460'FSL & 510'FEL, SEC.03)		7326.00	-4269.06	1354.83	3208337.28	1270832.98	40°04'27.934"N	104°45'19.890"W	point
BURKHARDT 38N-3HZ LANDBOX		7326.00	0.00	0.00	3206946.95	1275090.42	40°05'10.122"N	104°45'37.318"W	polygon

## WELLPATH COMPOSITION - Ref Wellbore: BURKHARDT 38N-3HZ AWB Ref Wellpath: BURKHARDT 38N-3HZ AWP

Start MD [ft]	End MD [ft]	Positional Uncertainty Model	Log Name/Comment	Wellbore
16.00	1600.00	Generic gyro - continuous (Standard)	MS ENERGY GYRO SURVEYS 13.5" <116-1600>	BURKHARDT 38N-3HZ AWB
1600.00	7881.00	NaviTrak (MAGCORR,IFR)	BHI MWD SURVEYS 8.75" <1656-7881>	BURKHARDT 38N-3HZ AWB
7881.00	11901.00	NaviTrak (MAGCORR,IFR)	BHI MWD SURVEYS 6.125" <7943-11901>	BURKHARDT 38N-3HZ AWB
11901.00	11950.00	Blind Drilling (std)	Projection to bit	BURKHARDT 38N-3HZ AWB

# Actual Wellpath Report

BURKHARDT 38N-3HZ AWP

Page 6 of 6

## REFERENCE WELLPATH IDENTIFICATION

Operator	KERR-MCGEE OIL & GAS ONSHORE LP	Slot	SLOT#13 BURKHARDT 38N-3HZ (420'FNL & 1860'FEL, SEC.03)
Area	COLORADO	Well	BURKHARDT 38N-3HZ
Field	WELD COUNTY (KERR MCGEE)	Wellbore	BURKHARDT 38N-3HZ AWB
Facility	SEC.03-T1N-R66W		

## WELLPATH COMMENTS

MD [ft]	Inclination [°]	Azimuth [°]	TVD [ft]	Comment
116.00	0.130	270.990	116.00	BEGIN GYRO SURVEYS
1600.00	0.510	15.110	1599.97	TIE-INTO GYRO SURVEYS
1656.00	0.750	332.800	1655.97	BEGIN BHI MWD+IFR SURVEYS
7913.00	89.825	182.190	7330.07	7" CASING POINT
11901.00	90.460	181.520	7329.74	LAST BHI MWD+IFR SURVEY
11950.00	90.460	181.520	7329.35	PROJECTION TO BIT