

1547 Gaylord Street
Denver, Colorado 80206
Phone: 303-296-3010
Fax: 303-298-8143
E-mail: bisonoil1@qwestoffice.net



WELL NO. AND FARM CENTENNIAL 32+33		COUNTY Weld	STATE Colo.	DATE 10-17-14	
CHARGE TO Noble		WELL LOCATION SEC. 33 TWP. 5N RANGE 63W		CONTRACTOR LEED 715	
		DELIVERED TO WCR 61+380		LOCATION 1 Shop	CODE
		SHIPPED VIA 4023-3104/4033-3205		LOCATION 2 61+380	CODE
		TYPE AND PURPOSE OF JOB Annular Fill		LOCATION 3 Shop	CODE
				WELL TYPE GAS	CODE
PRICE					

PRICE REFERENCE	DESCRIPTION	UNITS		UNIT PRICE	AMOUNT
		QTY.	MEAS.		
	Pump Charge	1	E.A.		
	NEAT G	434	S.K.		
	Pickup Mileage 1.50 mile 60 m.p.h. min One Way	1	L.H.		
	Truck Mileage 4.00 mile 60 m.p.h. min One Way	2	E.H.		
	Depth Charge	1	E.A.		
	SUGAR	100	Lb.		
	IRON INSUL. FEE	1	E.A.		
	Data Int	1	E.A.		
	Total Weight		Ton Miles		
	Loaded Miles				

TAX REFERENCES

Thanks Calvin

TAX

TOTAL

SUBJECT TO CORRECTION

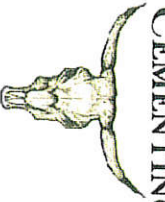
Customer or His Agent

Blson Oil Well Cementing, Inc. Representative

Customers hereby acknowledges and specifically agrees to the terms and conditions on this work order, including, without limitation, the provisions on the reverse side hereof which include the release and indemnity.

BISON OIL WELL CEMENTING, INC.

1547 Gaylord Street
Denver, Colorado 80206
Phone: 303-296-3010
Fax: 303-298-8143
E-mail: bisonoil1@qwestoffice.net



INVOICE #
LOCATION
FOREMAN

13035
614380
C. J. J. J. J.

Treatment Report Page 2

DESCRIPTION OF JOB EVENTS

Safety Meeting		Displace 1			Displace 2			Displace 3			Displace 4			Displace 5		
MIRU	9:56am	BBLS	Time	PSI	BBLS	Time	PSI	BBLS	Time	PSI	BBLS	Time	PSI	BBLS	Time	PSI
CIRCULATE	9:15am	0	10:52am	1710	0			0			0			0		
Drop Plug	10:04am	10	11:04am	1710	10			10			10			10		
		20			20			20			20			20		
		30			30			30			30			30		
		40			40			40			40			40		
M & P		50			50			50			50			50		
Time		60			60			60			60			60		
Sacks		70			70			70			70			70		
10:07am / 10:53am		80			80			80			80			80		
		90			90			90			90			90		
		100			100			100			100			100		
		110			110			110			110			110		
		120			120			120			120			120		
		130			130			130			130			130		
		140			140			140			140			140		
		150			150			150			150			150		

Notes:

Circ 5 bbls H₂O, Mix temp 434 Ks, 8828 bbls Slurry, Displace 2 1/2 bbls H₂O, Rig to pull out 5.970' Circ 10 bbls H₂O to pump Cement out of Surface casing, We had Circ 77.1 bbls Job

X Work Performed Title Date 10-17-14

BISON OIL WELL CEMENTING, INC.

1547 Gaylord Street
Denver, Colorado 80206
Phone: 303-296-3010
Fax: 303-298-8143
E-mail: bisonoil1@qwestoffice.net



INVOICE #
LOCATION
FOREMAN

13035
61+380
Calvin Reimer

TREATMENT REPORT

DATE	WELL NAME	SECTION	TWP	RGE	COUNTY
10-17-14	Centennial 32-33	33	5N	63W	Weld
BILL TO	CONSULTANT				
Noble	Jon Hall				
OWNER	RIG NAME & NUMBER				
Noble	Leed 715				
MAILING ADDRESS	DISTANCE TO LOCATION		UNITS ON LOCATION		
	24 miles		3104/3205		
CITY	TIME REQUESTED		TIME ARRIVED ON LOCATION		
	10:00am		9:00am		
STATE, ZIP	TIME LEFT LOCATION				
	12:15pm				
WELL DATA			Cement Makeup		
HOLE SIZE	TUBING SIZE	PERFORATIONS	Cement Blend	Nent G	
	1 1/4		Cement - Specs	lbs	Yield
TOTAL DEPTH	TUBING DEPTH	SHOTS/FT		15.8	1.15
	2030		Annulus Factor	Capacity Factor	
CASING SIZE	TUBING WEIGHT	OPEN HOLE		.0019	
			TYPE OF TREATMENT		
CASING DEPTH	TUBING CONDITION	TREATMENT VIA	<input type="checkbox"/> Surface Pipe <input type="checkbox"/> Production <input type="checkbox"/> Squeeze		
	Good		<input type="checkbox"/> MISC Pump <input checked="" type="checkbox"/> P&A Annular Fill		
CASING WEIGHT	PACKER DEPTH		HYD HHP = RATE X PRESSURE / 40.8		
			% Excess		
CASING CONDITION			BBL to Pit		
Max Rate					
Max Pressure	1200				

DESCRIPTION OF JOB EVENTS

MIRU, Safety Meeting, Break Cick, Mix + pump 450 sks, 92.16 bbls Slurry at 15.8 lb. 115 yield, Displace 2 1/2 bbls, Washup, Rig down

X

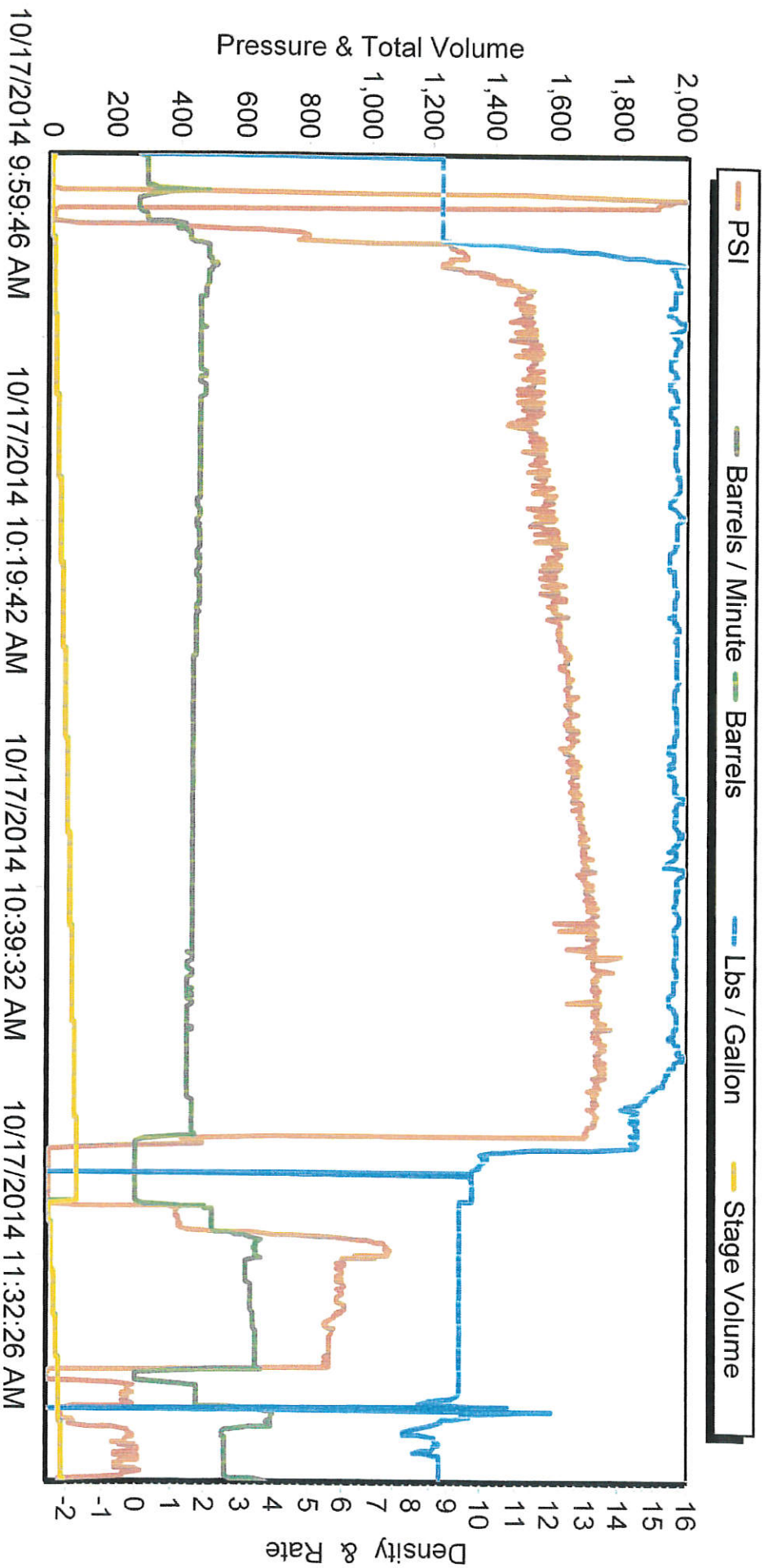
Authorization To Proceed

Title

X 10-17-14
Date

Customers hereby acknowledges and specifically agrees to the terms and conditions on this work order, including, without limitation, the provisions on the reverse side hereof which include the release and indemnity.

SERIES 2000



BISON OILWELL CEMENTING JOB SAFETY ANALYSIS WORKSHEET



JOB/TASK: Plug and Abandon		CEMENTER/SUPERVISOR: Calvin Reimers		PAGE 1	OF 3
WELL NAME: Centennial 32-33		RIG # Leed 715	LOCATION: WCR 61+380	DATE: 10-17-14	
OPERATOR: Noble		CONSULTANT: Jon Hull		INVOICE # 13035	
PPE REQUIRED: <input checked="" type="checkbox"/> Hard Hat <input checked="" type="checkbox"/> Safety Glasses <input checked="" type="checkbox"/> Steel Toe Boots <input checked="" type="checkbox"/> Impact Gloves		ADDITIONAL PPE (based on job specific hazards) <input checked="" type="checkbox"/> FR Coveralls <input type="checkbox"/> Reflective Vest		<input type="checkbox"/> Goggles <input type="checkbox"/> Faceshield <input type="checkbox"/> Chemical Resistant Gloves <input type="checkbox"/> Chemical Resistant Clothing <input type="checkbox"/> Air Purifying Respirator <input type="checkbox"/> Supplied Air Respirator <input type="checkbox"/> Personal H2S Monitor <input type="checkbox"/> Personal Methane Monitor	
JOB STEPS		POTENTIAL HAZARDS		RECOMMENDED ACTION OR PROCEDURE	
1. Review JSA		Misunderstanding		Clarify job and associated hazards and safety concerns	
2. Conduct pre job safety meeting		Misunderstanding		-Hold safety meeting with all personnel on location, ensure everyone pays attention to ensure they understand their role and responsibility during the job -Review treatment report with consultant and attain signature for authorization to proceed -Identify and address short service employees (SSE) who are on location -Verify method of relaying hand signals to rig crew for shutting down mud pump	
3. Move trucks in and rig up equipment		Other traffic on location, overhead lines, pinch points, heavy lifting, slips/falls		-Coordinate with well site supervisor for directions on where and when to park the equipment -All Bison crew members walk the location prior to driving in to access specific hazards -Utilize spotters when trucks are in motion -Establish buffer zone around equipment utilizing cones and caution tape -Cementer follows up to ensure connections are secure -Lift with your legs and use teamwork when rigging up -Utilize reflective vests and wands to increase visibility at night -Deploy spill berms and buckets -Verify connections on mudline for compatibility	
4. Raise hose to rig floor		Overhead work, improper hook up/load not properly secured, miscommunication between ground personnel and the crane/tugger operator		-Inspect chains, slings, hooks prior to lift -Ensure line of sight with crane/tugger operator is maintained throughout the lift and hand signals are clarified before the lift. -Ensure no personnel are under suspended loads -Utilize tag line	
5. Attach swage to tubing/Connect to swage on drill pipe		Connections/equipment failing under pressure, spills, slips and falls		-Insure swage has proper pressure rating for the job and falls within the parameters of the <i>Bison Oilwell Cementing Iron Inspection Program</i> -Verify the compatibility of the connections on a swage/pin provided by the rig -Minimize number of people on rig floor, utilize Bison personnel to attach cement lines -Be aware of surroundings when swinging a hammer	
6. Pressure test lines		Equipment failing under high pressures		-Ensure rig floor is clear and personnel are away from hoses prior to test -Establish buffer area around high pressure hoses -Lines are checked from a distance and using pressure gauges -Cementer ensures pressure gauges are working properly	
Test to: PS1- 2000 Maximum pressure allowed for job: PS1- 1200				Pressure relief valve set to: PS1- 2500 Max. pump pressure: PS1- 10000	
				CR	

BISON OILWELL CEMENTING JOB SAFETY ANALYSIS WORKSHEET



7. Pump Spacer/Mix and Pump Cement	Serious injury from high pressure line failure or catastrophic equipment failure. Burns or skin irritation from splashing cement, uncontrolled spills	<ul style="list-style-type: none"> -Pressure test prior to job, utilize heavy duty hose hobbles and pressure relief valve -Keep rig floor and buffer area clear while pumping -Utilize proper PPE -Have access to water to rinse affected skin -Deploy spill berms and buckets 	CR
8. Displacement	Unexpected pressure associated with resuming of pumping, serious injury from high pressure line failure catastrophic equipment failure, spills, overpressure of mudlines	<ul style="list-style-type: none"> -Ensure rig floor remains clear and non-essential personnel stay clear from buffer area -Pump operator monitors pump pressure constantly -Utilize proper PPE -During displacement ensure one mudline valve is always open -Review method of relaying hand signals to rig crew to engage/disengage mud pumps 	CR
REPEAT STEPS 7 AND 8 AS REQUIRED			
9. Wash up / Rig down	Splashing cement slurry, heavy lifting, pinch points, unsecured hoses	<ul style="list-style-type: none"> -Utilize stakes or portable tank manifold to secure hoses -Use proper lifting technique (2 man lift, lift with legs, plan your route) 	CR
10. Depart location	Other traffic and personnel and location, overhead lines	<ul style="list-style-type: none"> -All Bison crew member walk the planned exit route to access possible obstacles and hazards -Utilize spotters while backing 	CR
11. General Precautions/Stop Work	<p>-If you see a leaking connection, notify the cementer. Do not attempt to hammer up a leaking connection as there may be pressure on the lines.</p> <p>-Any person on location, regardless of their position or experience level has the authority and responsibility to stop the job if they witness an unsafe act or condition.</p>		
OTHER HAZARDS SPECIFIC TO LOCATION OR ENVIRONMENT NOT ADDRESSED ABOVE:			CR
DESIGNATED EMERGENCY MUSTER AREA:	NEAREST EMERGENCY MEDICAL FACILITY (OTHER THAN 911): Greeley		
HEAD COUNT-			