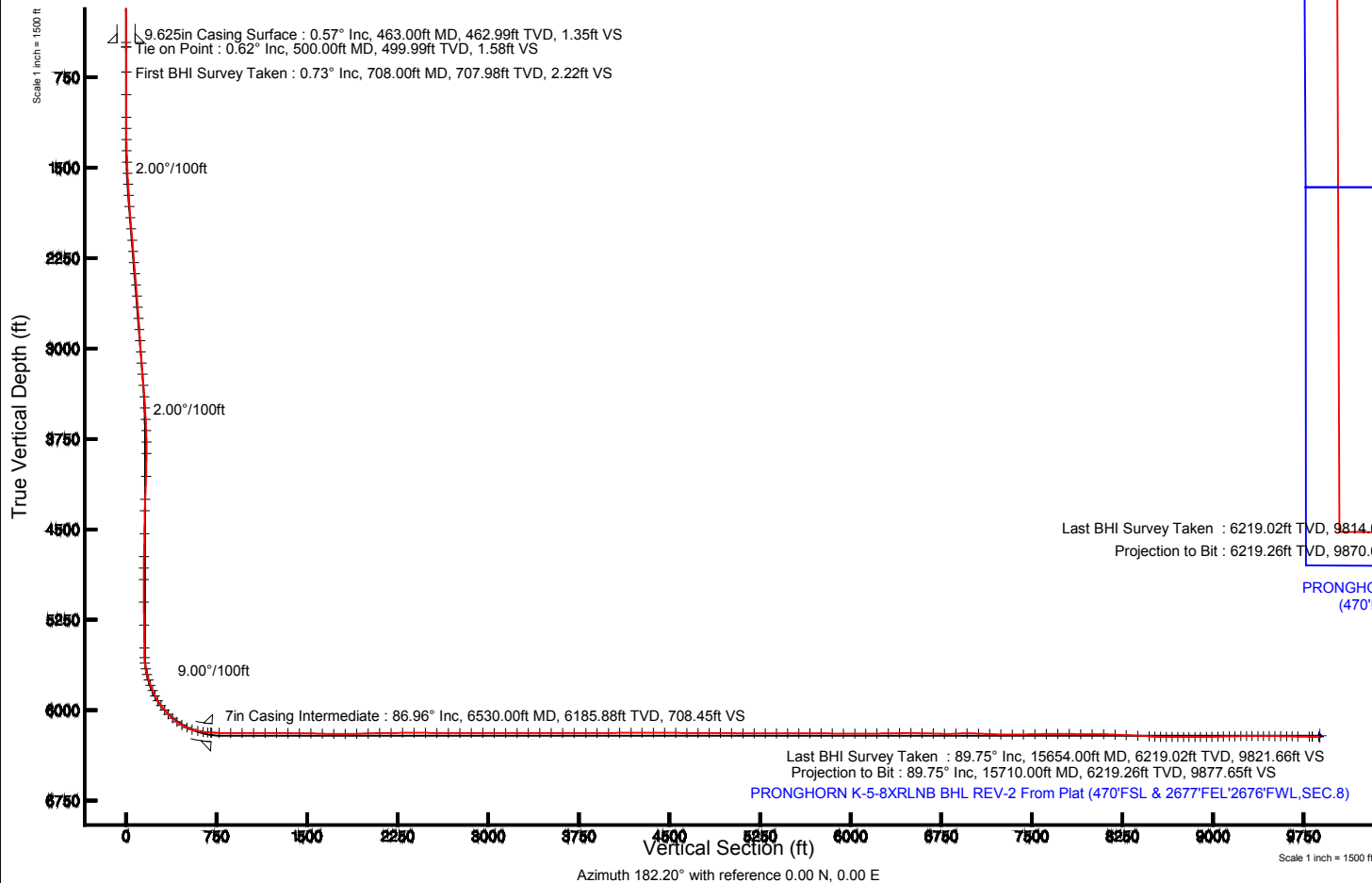


BONANZA CREEK OIL COMPANY

Location: COLORADO Slot: SLOT#01 PRONGHORN K-5-8XRLNB (201°FNL & 2291°FEL, SEC.5)
Field: WELD COUNTY Well: PRONGHORN K-5-8XRLNB
Facility: SEC.05-T5N-R61W Wellbore: PRONGHORN K-5-8XRLNB PWB

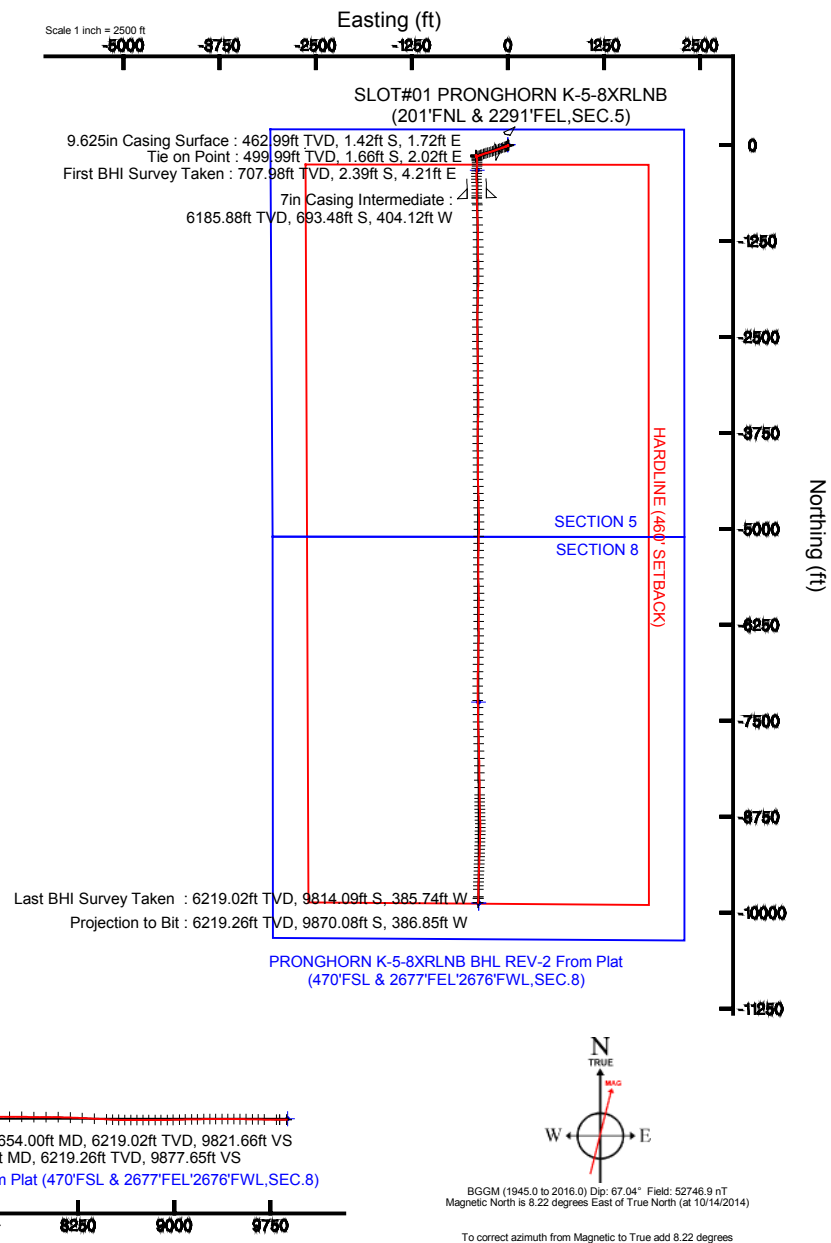
Plot reference wellpath is PRONGHORN K-5-8XRLNB (REV-C.0) PWP

True vertical depths are referenced to RIG (RKB)	Grid System: NAD83 / Lambert Colorado SP, Northern Zone (501), US feet
Measured depths are referenced to RIG (RKB)	North Reference: True north
RIG (RKB) to Mean Sea Level: 4675 feet	Scale: True distance
Mean Sea Level to Mud line (At Slot: SLOT#01 PRONGHORN K-5-8XRLNB (201°FNL & 2291°FEL, SEC.5)): 0 feet	Depths are in feet
Coordinates are in feet referenced to Slot	Created by: guenaler on 10/14/2014



Location Information

Facility Name			Grid East (US ft)	Grid North (US ft)	Latitude	Longitude
SEC.05-T5N-R61W			3352971.931	1404526.872	40°26'12.840"N	104°13'54.876"W
Slot	Local N (ft)	Local E (ft)	Grid East (US ft)	Grid North (US ft)	Latitude	Longitude
SLOT#01 PRONGHORN K-5-8XRLNB (201°FNL & 2291°FEL,SEC.5)	-3.64	0.00	3352971.983	1404523.229	40°26'12.804"N	104°13'54.876"W
RIG (RKB) to Mud line (At Slot: SLOT#01 PRONGHORN K-5-8XRLNB (201°FNL & 2291°FEL,SEC.5))					4675ft	
Mean Sea Level to Mud line (At Slot: SLOT#01 PRONGHORN K-5-8XRLNB (201°FNL & 2291°FEL,SEC.5))					0ft	
RIG (RKB) to Mean Sea Level					4675ft	





Actual Wellpath Report

PRONGHORN K-5-8XRLNB AWP

Page 1 of 11



REFERENCE WELLPATH IDENTIFICATION

Operator	BONANZA CREEK OIL COMPANY	Slot	SLOT#01 PRONGHORN K-5-8XRLNB (201'FNL & 2291'FEL,SEC.5)
Area	COLORADO	Well	PRONGHORN K-5-8XRLNB
Field	WELD COUNTY	Wellbore	PRONGHORN K-5-8XRLNB AWB
Facility	SEC.05-T5N-R61W		

REPORT SETUP INFORMATION

Projection System	NAD83 / Lambert Colorado SP, Northern Zone (501), US feet	Software System	WellArchitect® 4.0.0
North Reference	True	User	Guenaler
Scale	0.999962	Report Generated	10/14/2014 at 5:22:47 PM
Convergence at slot	n/a	Database/Source file	WA_Denver/PRONGHORN_K-5-8XRLNB_AWB_.xml

WELLPATH LOCATION

	Local coordinates		Grid coordinates		Geographic coordinates	
	North[ft]	East[ft]	Easting[US ft]	Northing[US ft]	Latitude	Longitude
Slot Location	-3.64	0.00	3352971.98	1404523.23	40°26'12.804"N	104°13'54.876"W
Facility Reference Pt			3352971.93	1404526.87	40°26'12.840"N	104°13'54.876"W
Field Reference Pt			3335925.10	1457282.25	40°34'56.460"N	104°17'26.016"W

WELLPATH DATUM

Calculation method	Minimum curvature	RIG (RKB) to Facility Vertical Datum	4675.00ft
Horizontal Reference Pt	Slot	RIG (RKB) to Mean Sea Level	4675.00ft
Vertical Reference Pt	RIG (RKB)	RIG (RKB) to Mud Line at Slot (SLOT#01 PRONGHORN K-5-8XRLNB (201'FNL & 2291'FEL,SEC.5))	4675.00ft
MD Reference Pt	RIG (RKB)	Section Origin	N 0.00, E 0.00 ft
Field Vertical Reference	Mean Sea Level	Section Azimuth	182.20°



Actual Wellpath Report

PRONGHORN K-5-8XRLNB AWP

Page 2 of 11



REFERENCE WELLPATH IDENTIFICATION

Operator	BONANZA CREEK OIL COMPANY	Slot	SLOT#01 PRONGHORN K-5-8XRLNB (201'FNL & 2291'FEL,SEC.5)
Area	COLORADO	Well	PRONGHORN K-5-8XRLNB
Field	WELD COUNTY	Wellbore	PRONGHORN K-5-8XRLNB AWB
Facility	SEC.05-T5N-R61W		

WELLPATH DATA (179 stations) † = interpolated/extrapolated station

MD [ft]	Inclination [°]	Azimuth [°]	TVD [ft]	Vert Sect [ft]	North [ft]	East [ft]	Latitude	Longitude	DLS [°/100ft]	Comments
0.00†	0.000	129.520	0.00	0.00	0.00	0.00	40°26'12.804"N	104°13'54.876"W	0.00	
17.00	0.000	129.520	17.00	0.00	0.00	0.00	40°26'12.804"N	104°13'54.876"W	0.00	
500.00	0.620	129.520	499.99	1.58	-1.66	2.02	40°26'12.788"N	104°13'54.850"W	0.13	Tie on Point
708.00	0.730	90.380	707.98	2.22	-2.39	4.21	40°26'12.780"N	104°13'54.822"W	0.22	First BHI Survey Taken
895.00	0.650	89.300	894.96	2.13	-2.38	6.46	40°26'12.780"N	104°13'54.792"W	0.04	
1081.00	0.700	114.380	1080.95	2.51	-2.84	8.55	40°26'12.776"N	104°13'54.765"W	0.16	
1174.00	0.710	117.290	1173.94	2.97	-3.34	9.58	40°26'12.771"N	104°13'54.752"W	0.04	
1268.00	1.200	216.480	1267.94	4.03	-4.40	9.51	40°26'12.761"N	104°13'54.753"W	1.58	
1360.00	3.300	240.760	1359.86	6.21	-6.46	6.63	40°26'12.740"N	104°13'54.790"W	2.46	
1454.00	5.110	245.780	1453.60	9.48	-9.50	0.45	40°26'12.710"N	104°13'54.870"W	1.96	
1548.00	6.490	254.200	1547.12	12.98	-12.67	-8.48	40°26'12.679"N	104°13'54.986"W	1.72	
1640.00	7.570	244.470	1638.43	17.41	-16.70	-18.95	40°26'12.639"N	104°13'55.121"W	1.74	
1733.00	10.070	249.650	1730.33	23.38	-22.16	-32.11	40°26'12.585"N	104°13'55.291"W	2.82	
1827.00	11.590	255.120	1822.65	29.30	-27.45	-48.94	40°26'12.533"N	104°13'55.509"W	1.95	
1922.00	11.660	249.900	1915.71	35.75	-33.20	-67.18	40°26'12.476"N	104°13'55.745"W	1.11	
2017.00	12.400	246.940	2008.62	43.74	-40.49	-85.58	40°26'12.404"N	104°13'55.983"W	1.01	
2112.00	12.690	248.670	2101.35	52.26	-48.28	-104.68	40°26'12.327"N	104°13'56.230"W	0.50	
2207.00	11.620	251.500	2194.22	59.80	-55.11	-123.48	40°26'12.259"N	104°13'56.473"W	1.29	
2302.00	12.950	251.500	2287.05	66.95	-61.53	-142.64	40°26'12.196"N	104°13'56.721"W	1.40	
2398.00	13.080	247.230	2380.58	75.33	-69.15	-162.86	40°26'12.121"N	104°13'56.982"W	1.01	
2492.00	12.880	253.230	2472.18	83.23	-76.28	-182.70	40°26'12.050"N	104°13'57.239"W	1.45	
2587.00	12.810	253.440	2564.81	90.05	-82.34	-202.93	40°26'11.990"N	104°13'57.500"W	0.09	
2682.00	13.340	252.880	2657.34	97.07	-88.57	-223.50	40°26'11.929"N	104°13'57.766"W	0.57	
2777.00	12.530	252.600	2749.93	104.15	-94.88	-243.81	40°26'11.866"N	104°13'58.029"W	0.86	
2871.00	12.490	254.930	2841.70	110.58	-100.57	-263.36	40°26'11.810"N	104°13'58.282"W	0.54	
2966.00	11.840	254.560	2934.57	116.59	-105.84	-282.67	40°26'11.758"N	104°13'58.532"W	0.69	
3061.00	11.630	251.960	3027.58	122.85	-111.40	-301.17	40°26'11.703"N	104°13'58.771"W	0.60	
3156.00	11.200	251.430	3120.70	129.43	-117.30	-319.02	40°26'11.645"N	104°13'59.002"W	0.47	
3251.00	11.840	248.330	3213.79	136.65	-123.84	-336.82	40°26'11.580"N	104°13'59.232"W	0.94	
3346.00	12.540	247.800	3306.65	144.85	-131.33	-355.43	40°26'11.506"N	104°13'59.473"W	0.75	



Actual Wellpath Report

PRONGHORN K-5-8XRLNB AWP

Page 3 of 11



REFERENCE WELLPATH IDENTIFICATION			
Operator	BONANZA CREEK OIL COMPANY	Slot	SLOT#01 PRONGHORN K-5-8XRLNB (201'FNL & 2291'FEL,SEC.5)
Area	COLORADO	Well	PRONGHORN K-5-8XRLNB
Field	WELD COUNTY	Wellbore	PRONGHORN K-5-8XRLNB AWB
Facility	SEC.05-T5N-R61W		

WELLPATH DATA (179 stations)

MD [ft]	Inclination [°]	Azimuth [°]	TVD [ft]	Vert Sect [ft]	North [ft]	East [ft]	Latitude	Longitude	DLS [°/100ft]	Comments
3441.00	10.650	250.810	3399.70	152.31	-138.11	-373.27	40°26'11.439"N	104°13'59.703"W	2.09	
3536.00	9.620	254.500	3493.22	157.93	-143.12	-389.21	40°26'11.390"N	104°13'59.909"W	1.28	
3631.00	7.880	248.420	3587.11	162.96	-147.64	-402.92	40°26'11.345"N	104°14'00.087"W	2.07	
3726.00	5.000	249.160	3681.51	167.21	-151.51	-412.84	40°26'11.307"N	104°14'00.215"W	3.03	
3821.00	2.230	244.310	3776.31	169.69	-153.78	-418.38	40°26'11.284"N	104°14'00.287"W	2.93	
3916.00	0.810	43.390	3871.29	170.05	-154.10	-419.59	40°26'11.281"N	104°14'00.302"W	3.16	
4105.00	1.580	19.250	4060.25	166.56	-150.66	-417.81	40°26'11.315"N	104°14'00.279"W	0.48	
4295.00	2.920	15.060	4250.10	159.34	-143.52	-415.69	40°26'11.386"N	104°14'00.252"W	0.71	
4390.00	1.050	351.630	4345.04	156.12	-140.32	-415.19	40°26'11.417"N	104°14'00.245"W	2.11	
4580.00	1.010	325.490	4535.01	153.07	-137.22	-416.39	40°26'11.448"N	104°14'00.261"W	0.25	
4770.00	1.640	341.110	4724.95	149.19	-133.27	-418.22	40°26'11.487"N	104°14'00.285"W	0.38	
4865.00	0.460	97.610	4819.94	147.95	-132.03	-418.28	40°26'11.499"N	104°14'00.285"W	1.99	
4961.00	0.650	97.940	4915.94	148.05	-132.16	-417.36	40°26'11.498"N	104°14'00.273"W	0.20	
5150.00	0.500	119.830	5104.93	148.54	-132.71	-415.58	40°26'11.493"N	104°14'00.250"W	0.14	
5340.00	0.920	134.040	5294.91	149.94	-134.19	-413.76	40°26'11.478"N	104°14'00.227"W	0.24	
5530.00	0.730	157.790	5484.89	152.06	-136.37	-412.21	40°26'11.456"N	104°14'00.207"W	0.20	
5608.00	2.250	150.790	5562.87	153.82	-138.16	-411.28	40°26'11.439"N	104°14'00.195"W	1.96	
5655.00	6.000	163.400	5609.74	156.93	-141.32	-410.12	40°26'11.407"N	104°14'00.180"W	8.16	
5703.00	11.220	165.240	5657.18	163.78	-148.25	-408.21	40°26'11.339"N	104°14'00.155"W	10.89	
5750.00	15.090	169.440	5702.94	174.12	-158.69	-405.93	40°26'11.236"N	104°14'00.126"W	8.48	
5798.00	18.590	171.220	5748.87	187.73	-172.40	-403.61	40°26'11.100"N	104°14'00.096"W	7.37	
5845.00	20.970	181.110	5793.11	203.50	-188.22	-402.63	40°26'10.944"N	104°14'00.083"W	8.72	
5893.00	22.870	177.040	5837.64	221.38	-206.12	-402.32	40°26'10.767"N	104°14'00.079"W	5.07	
5940.00	25.850	179.490	5880.45	240.72	-225.49	-401.75	40°26'10.576"N	104°14'00.072"W	6.69	
5988.00	31.340	179.500	5922.58	263.66	-248.46	-401.55	40°26'10.349"N	104°14'00.069"W	11.44	
6035.00	36.650	182.270	5961.54	289.91	-274.72	-402.00	40°26'10.089"N	104°14'00.075"W	11.77	
6083.00	40.230	183.570	5999.13	319.75	-304.51	-403.54	40°26'09.795"N	104°14'00.095"W	7.65	
6130.00	43.400	184.550	6034.15	351.06	-335.76	-405.76	40°26'09.486"N	104°14'00.123"W	6.89	
6177.00	47.740	181.650	6067.05	384.60	-369.27	-407.54	40°26'09.155"N	104°14'00.146"W	10.23	
6225.00	54.060	179.820	6097.31	421.82	-406.49	-408.00	40°26'08.787"N	104°14'00.152"W	13.49	



Actual Wellpath Report

PRONGHORN K-5-8XRLNB AWP

Page 4 of 11



REFERENCE WELLPATH IDENTIFICATION			
Operator	BONANZA CREEK OIL COMPANY	Slot	SLOT#01 PRONGHORN K-5-8XRLNB (201'FNL & 2291'FEL,SEC.5)
Area	COLORADO	Well	PRONGHORN K-5-8XRLNB
Field	WELD COUNTY	Wellbore	PRONGHORN K-5-8XRLNB AWB
Facility	SEC.05-T5N-R61W		

WELLPATH DATA (179 stations)										
MD [ft]	Inclination [°]	Azimuth [°]	TVD [ft]	Vert Sect [ft]	North [ft]	East [ft]	Latitude	Longitude	DLS [°/100ft]	Comments
6272.00	60.420	179.410	6122.73	461.28	-445.99	-407.72	40°26'08.397"N	104°14'00.149"W	13.55	
6320.00	66.330	178.510	6144.23	504.11	-488.88	-406.94	40°26'07.973"N	104°14'00.139"W	12.43	
6367.00	73.530	178.650	6160.35	548.14	-532.98	-405.85	40°26'07.537"N	104°14'00.124"W	15.32	
6415.00	77.690	180.000	6172.28	594.56	-579.46	-405.30	40°26'07.078"N	104°14'00.117"W	9.08	
6462.00	82.640	180.740	6180.30	640.83	-625.75	-405.60	40°26'06.621"N	104°14'00.121"W	10.65	
6498.00	85.920	177.990	6183.89	676.60	-661.56	-405.20	40°26'06.267"N	104°14'00.116"W	11.86	
6523.00	86.730	178.070	6185.49	701.48	-686.50	-404.35	40°26'06.020"N	104°14'00.105"W	3.26	
6594.00	89.110	178.770	6188.07	772.28	-757.42	-402.39	40°26'05.319"N	104°14'00.080"W	3.49	
6689.00	89.320	177.810	6189.37	867.04	-852.37	-399.56	40°26'04.381"N	104°14'00.043"W	1.03	
6784.00	89.850	177.280	6190.06	961.73	-947.28	-395.49	40°26'03.443"N	104°13'59.990"W	0.79	
6879.00	90.340	178.550	6189.90	1056.46	-1042.21	-392.03	40°26'02.505"N	104°13'59.946"W	1.43	
6974.00	90.280	178.360	6189.39	1151.26	-1137.17	-389.47	40°26'01.567"N	104°13'59.913"W	0.21	
7069.00	89.810	178.770	6189.31	1246.07	-1232.14	-387.09	40°26'00.628"N	104°13'59.882"W	0.66	
7165.00	89.100	180.310	6190.23	1341.96	-1328.13	-386.32	40°25'59.680"N	104°13'59.872"W	1.77	
7259.00	89.660	179.900	6191.24	1435.89	-1422.13	-386.49	40°25'58.751"N	104°13'59.874"W	0.74	
7355.00	89.040	179.400	6192.33	1531.79	-1518.12	-385.91	40°25'57.803"N	104°13'59.866"W	0.83	
7450.00	87.840	179.080	6194.92	1626.62	-1613.07	-384.65	40°25'56.864"N	104°13'59.850"W	1.31	
7545.00	90.340	180.980	6196.43	1721.53	-1708.05	-384.70	40°25'55.926"N	104°13'59.851"W	3.31	
7640.00	89.750	180.220	6196.35	1816.49	-1803.04	-385.69	40°25'54.987"N	104°13'59.864"W	1.01	
7734.00	91.240	181.450	6195.54	1910.46	-1897.02	-387.06	40°25'54.058"N	104°13'59.881"W	2.06	
7829.00	92.080	181.580	6192.79	2005.41	-1991.95	-389.57	40°25'53.120"N	104°13'59.914"W	0.89	
7924.00	91.390	182.400	6189.91	2100.37	-2086.85	-392.87	40°25'52.183"N	104°13'59.956"W	1.13	
8019.00	90.220	180.970	6188.58	2195.35	-2181.79	-395.66	40°25'51.244"N	104°13'59.992"W	1.94	
8114.00	91.110	181.090	6187.47	2290.32	-2276.77	-397.37	40°25'50.306"N	104°14'00.014"W	0.95	
8209.00	89.630	179.640	6186.86	2385.27	-2371.76	-397.97	40°25'49.367"N	104°14'00.022"W	2.18	
8304.00	89.260	179.240	6187.78	2480.15	-2466.75	-397.05	40°25'48.429"N	104°14'00.010"W	0.57	
8398.00	89.570	179.310	6188.74	2574.02	-2560.74	-395.86	40°25'47.500"N	104°13'59.995"W	0.34	
8493.00	90.560	179.120	6188.63	2668.89	-2655.73	-394.56	40°25'46.561"N	104°13'59.978"W	1.06	
8589.00	89.410	178.870	6188.66	2764.74	-2751.71	-392.87	40°25'45.613"N	104°13'59.956"W	1.23	
8683.00	90.790	178.200	6188.49	2858.55	-2845.68	-390.47	40°25'44.684"N	104°13'59.925"W	1.63	



Actual Wellpath Report

PRONGHORN K-5-8XRLNB AWP

Page 5 of 11



REFERENCE WELLPATH IDENTIFICATION

Operator	BONANZA CREEK OIL COMPANY	Slot	SLOT#01 PRONGHORN K-5-8XRLNB (201'FNL & 2291'FEL,SEC.5)
Area	COLORADO	Well	PRONGHORN K-5-8XRLNB
Field	WELD COUNTY	Wellbore	PRONGHORN K-5-8XRLNB AWB
Facility	SEC.05-T5N-R61W		

WELLPATH DATA (179 stations)

MD [ft]	Inclination [°]	Azimuth [°]	TVD [ft]	Vert Sect [ft]	North [ft]	East [ft]	Latitude	Longitude	DLS [°/100ft]	Comments
8778.00	89.540	179.780	6188.22	2953.39	-2940.66	-388.79	40°25'43.746"N	104°13'59.903"W	2.12	
8873.00	90.190	179.170	6188.44	3048.29	-3035.65	-387.92	40°25'42.807"N	104°13'59.892"W	0.94	
8968.00	89.380	179.610	6188.80	3143.17	-3130.65	-386.91	40°25'41.868"N	104°13'59.879"W	0.97	
9063.00	90.570	178.220	6188.84	3238.01	-3225.63	-385.11	40°25'40.930"N	104°13'59.856"W	1.93	
9157.00	89.400	180.300	6188.87	3331.88	-3319.61	-383.90	40°25'40.001"N	104°13'59.840"W	2.54	
9252.00	90.600	179.150	6188.87	3426.79	-3414.61	-383.44	40°25'39.062"N	104°13'59.834"W	1.75	
9347.00	89.350	182.460	6188.91	3521.75	-3509.58	-384.78	40°25'38.124"N	104°13'59.851"W	3.72	
9442.00	90.810	182.310	6188.78	3616.74	-3604.50	-388.73	40°25'37.186"N	104°13'59.903"W	1.54	
9537.00	89.350	181.000	6188.64	3711.73	-3699.45	-391.47	40°25'36.248"N	104°13'59.938"W	2.06	
9632.00	89.910	180.150	6189.26	3806.69	-3794.45	-392.43	40°25'35.309"N	104°13'59.950"W	1.07	
9726.00	90.030	179.200	6189.31	3900.60	-3888.44	-391.89	40°25'34.380"N	104°13'59.943"W	1.02	
9821.00	90.410	179.050	6188.94	3995.46	-3983.43	-390.44	40°25'33.441"N	104°13'59.925"W	0.43	
9914.00	91.150	179.160	6187.67	4088.32	-4076.41	-388.99	40°25'32.523"N	104°13'59.906"W	0.80	
10007.00	89.600	180.190	6187.07	4181.22	-4169.40	-388.46	40°25'31.604"N	104°13'59.899"W	2.00	
10099.00	89.970	179.960	6187.41	4273.16	-4261.40	-388.58	40°25'30.695"N	104°13'59.900"W	0.47	
10192.00	90.060	178.970	6187.39	4366.05	-4354.40	-387.72	40°25'29.776"N	104°13'59.889"W	1.07	
10285.00	90.090	179.050	6187.27	4458.91	-4447.38	-386.11	40°25'28.857"N	104°13'59.868"W	0.09	
10378.00	89.320	177.330	6187.74	4551.68	-4540.33	-383.17	40°25'27.938"N	104°13'59.830"W	2.03	
10470.00	89.720	179.860	6188.51	4643.48	-4632.29	-380.92	40°25'27.030"N	104°13'59.801"W	2.78	
10563.00	89.880	178.260	6188.84	4736.34	-4725.28	-379.39	40°25'26.111"N	104°13'59.782"W	1.73	
10657.00	89.600	178.940	6189.27	4830.15	-4819.25	-377.09	40°25'25.182"N	104°13'59.752"W	0.78	
10749.00	89.720	179.410	6189.81	4922.02	-4911.23	-375.77	40°25'24.273"N	104°13'59.735"W	0.53	
10842.00	89.630	181.240	6190.34	5014.97	-5004.23	-376.30	40°25'23.354"N	104°13'59.741"W	1.97	
10935.00	89.320	181.680	6191.19	5107.96	-5097.19	-378.67	40°25'22.436"N	104°13'59.772"W	0.58	
11028.00	89.650	180.850	6192.03	5200.94	-5190.17	-380.72	40°25'21.517"N	104°13'59.799"W	0.96	
11121.00	90.150	180.650	6192.19	5293.91	-5283.16	-381.94	40°25'20.598"N	104°13'59.814"W	0.58	
11213.00	89.840	179.710	6192.20	5385.85	-5375.16	-382.23	40°25'19.689"N	104°13'59.818"W	1.08	
11305.00	90.130	181.100	6192.22	5477.80	-5467.15	-382.88	40°25'18.780"N	104°13'59.826"W	1.54	
11398.00	90.220	180.300	6191.94	5570.77	-5560.14	-384.01	40°25'17.861"N	104°13'59.841"W	0.87	
11491.00	90.180	179.000	6191.61	5663.68	-5653.14	-383.44	40°25'16.942"N	104°13'59.834"W	1.40	



Actual Wellpath Report

PRONGHORN K-5-8XRLNB AWP

Page 6 of 11



REFERENCE WELLPATH IDENTIFICATION			
Operator	BONANZA CREEK OIL COMPANY	Slot	SLOT#01 PRONGHORN K-5-8XRLNB (201'FNL & 2291'FEL,SEC.5)
Area	COLORADO	Well	PRONGHORN K-5-8XRLNB
Field	WELD COUNTY	Wellbore	PRONGHORN K-5-8XRLNB AWB
Facility	SEC.05-T5N-R61W		

WELLPATH DATA (179 stations)										
MD [ft]	Inclination [°]	Azimuth [°]	TVD [ft]	Vert Sect [ft]	North [ft]	East [ft]	Latitude	Longitude	DLS [°/100ft]	Comments
11584.00	89.560	177.680	6191.82	5756.46	-5746.10	-380.75	40°25'16.023"N	104°13'59.799"W	1.57	
11676.00	88.790	179.240	6193.15	5848.26	-5838.05	-378.28	40°25'15.115"N	104°13'59.767"W	1.89	
11768.00	89.810	180.360	6194.27	5940.17	-5930.04	-377.96	40°25'14.206"N	104°13'59.763"W	1.65	
11862.00	90.150	181.050	6194.31	6034.13	-6024.03	-379.11	40°25'13.277"N	104°13'59.778"W	0.82	
11953.00	90.280	179.750	6193.96	6125.09	-6115.03	-379.75	40°25'12.378"N	104°13'59.786"W	1.44	
12046.00	90.560	180.140	6193.28	6218.01	-6208.03	-379.66	40°25'11.459"N	104°13'59.785"W	0.52	
12139.00	90.830	180.790	6192.15	6310.96	-6301.01	-380.41	40°25'10.540"N	104°13'59.794"W	0.76	
12233.00	91.120	180.250	6190.56	6404.91	-6395.00	-381.27	40°25'09.611"N	104°13'59.805"W	0.65	
12327.00	89.540	180.820	6190.01	6498.86	-6488.99	-382.15	40°25'08.682"N	104°13'59.817"W	1.79	
12420.00	89.320	180.520	6190.94	6591.83	-6581.98	-383.23	40°25'07.764"N	104°13'59.831"W	0.40	
12512.00	87.740	180.820	6193.30	6683.76	-6673.94	-384.31	40°25'06.855"N	104°13'59.845"W	1.75	
12605.00	89.200	181.490	6195.78	6776.71	-6766.88	-386.18	40°25'05.936"N	104°13'59.869"W	1.73	
12699.00	92.650	182.740	6194.26	6870.68	-6860.79	-389.65	40°25'05.008"N	104°13'59.914"W	3.90	
12792.00	90.030	181.080	6192.09	6963.64	-6953.70	-392.75	40°25'04.090"N	104°13'59.954"W	3.33	
12886.00	87.640	179.650	6194.00	7057.57	-7047.67	-393.35	40°25'03.162"N	104°13'59.961"W	2.96	
12979.00	87.250	179.680	6198.15	7150.38	-7140.58	-392.80	40°25'02.244"N	104°13'59.954"W	0.42	
13073.00	89.440	178.720	6200.86	7244.21	-7234.52	-391.49	40°25'01.315"N	104°13'59.937"W	2.54	
13167.00	89.810	179.100	6201.48	7338.05	-7328.50	-389.70	40°25'00.387"N	104°13'59.914"W	0.56	
13260.00	90.720	179.340	6201.05	7430.92	-7421.49	-388.44	40°24'59.468"N	104°13'59.898"W	1.01	
13354.00	91.570	178.700	6199.17	7524.76	-7515.46	-386.83	40°24'58.539"N	104°13'59.877"W	1.13	
13449.00	90.160	178.080	6197.73	7619.54	-7610.41	-384.16	40°24'57.601"N	104°13'59.843"W	1.62	
13544.00	90.890	178.570	6196.86	7714.31	-7705.36	-381.38	40°24'56.663"N	104°13'59.807"W	0.93	
13639.00	88.740	178.130	6197.17	7809.09	-7800.31	-378.65	40°24'55.724"N	104°13'59.771"W	2.31	
13734.00	88.830	178.400	6199.18	7903.85	-7895.25	-375.77	40°24'54.786"N	104°13'59.734"W	0.30	
13829.00	90.790	179.440	6199.50	7998.69	-7990.23	-373.98	40°24'53.848"N	104°13'59.711"W	2.34	
13924.00	88.650	179.130	6199.96	8093.56	-8085.21	-372.80	40°24'52.909"N	104°13'59.696"W	2.28	
14019.00	87.970	178.880	6202.77	8188.37	-8180.16	-371.15	40°24'51.971"N	104°13'59.674"W	0.76	
14113.00	87.260	179.000	6206.68	8282.14	-8274.06	-369.41	40°24'51.043"N	104°13'59.652"W	0.77	
14208.00	87.290	179.340	6211.19	8376.90	-8368.94	-368.04	40°24'50.105"N	104°13'59.634"W	0.36	
14303.00	86.780	179.550	6216.11	8471.66	-8463.81	-367.12	40°24'49.168"N	104°13'59.622"W	0.58	



Actual Wellpath Report

PRONGHORN K-5-8XRLNB AWP

Page 7 of 11



REFERENCE WELLPATH IDENTIFICATION

Operator	BONANZA CREEK OIL COMPANY	Slot	SLOT#01 PRONGHORN K-5-8XRLNB (201'FNL & 2291'FEL,SEC.5)
Area	COLORADO	Well	PRONGHORN K-5-8XRLNB
Field	WELD COUNTY	Wellbore	PRONGHORN K-5-8XRLNB AWB
Facility	SEC.05-T5N-R61W		

WELLPATH DATA (179 stations)

MD [ft]	Inclination [°]	Azimuth [°]	TVD [ft]	Vert Sect [ft]	North [ft]	East [ft]	Latitude	Longitude	DLS [°/100ft]	Comments
14351.00	86.730	179.980	6218.83	8519.54	-8511.73	-366.92	40°24'48.694"N	104°13'59.620"W	0.90	
14398.00	88.610	179.550	6220.74	8566.46	-8558.69	-366.73	40°24'48.230"N	104°13'59.617"W	4.10	
14445.00	90.370	179.070	6221.15	8613.39	-8605.68	-366.16	40°24'47.766"N	104°13'59.610"W	3.88	
14492.00	90.250	178.960	6220.90	8660.32	-8652.67	-365.35	40°24'47.302"N	104°13'59.599"W	0.35	
14540.00	89.480	178.530	6221.01	8708.23	-8700.66	-364.30	40°24'46.827"N	104°13'59.586"W	1.84	
14587.00	89.290	177.640	6221.52	8755.11	-8747.63	-362.73	40°24'46.363"N	104°13'59.565"W	1.94	
14634.00	89.880	178.800	6221.86	8801.99	-8794.61	-361.27	40°24'45.899"N	104°13'59.546"W	2.77	
14682.00	90.030	179.570	6221.90	8849.93	-8842.60	-360.59	40°24'45.425"N	104°13'59.538"W	1.63	
14729.00	90.310	180.110	6221.76	8896.89	-8889.60	-360.46	40°24'44.960"N	104°13'59.536"W	1.29	
14777.00	90.860	180.580	6221.27	8944.86	-8937.60	-360.75	40°24'44.486"N	104°13'59.540"W	1.51	
14824.00	91.540	181.700	6220.28	8991.84	-8984.58	-361.68	40°24'44.022"N	104°13'59.552"W	2.79	
14872.00	91.450	181.700	6219.03	9039.82	-9032.54	-363.11	40°24'43.548"N	104°13'59.570"W	0.19	
14919.00	91.290	181.710	6217.91	9086.81	-9079.51	-364.50	40°24'43.084"N	104°13'59.588"W	0.34	
14967.00	91.150	180.910	6216.88	9134.79	-9127.48	-365.60	40°24'42.610"N	104°13'59.602"W	1.69	
15014.00	91.050	181.660	6215.98	9181.77	-9174.46	-366.65	40°24'42.146"N	104°13'59.616"W	1.61	
15062.00	91.050	181.730	6215.10	9229.76	-9222.43	-368.07	40°24'41.672"N	104°13'59.634"W	0.15	
15109.00	90.560	182.270	6214.44	9276.76	-9269.40	-369.71	40°24'41.207"N	104°13'59.656"W	1.55	
15156.00	90.490	182.200	6214.01	9323.76	-9316.36	-371.55	40°24'40.743"N	104°13'59.679"W	0.21	
15204.00	89.540	181.720	6214.00	9371.75	-9364.33	-373.19	40°24'40.269"N	104°13'59.700"W	2.22	
15251.00	89.540	182.180	6214.38	9418.75	-9411.30	-374.79	40°24'39.805"N	104°13'59.721"W	0.98	
15298.00	88.950	182.720	6214.99	9465.75	-9458.26	-376.80	40°24'39.341"N	104°13'59.747"W	1.70	
15346.00	89.970	182.030	6215.45	9513.74	-9506.21	-378.79	40°24'38.867"N	104°13'59.773"W	2.57	
15393.00	89.690	181.880	6215.59	9560.74	-9553.18	-380.39	40°24'38.403"N	104°13'59.793"W	0.68	
15441.00	89.010	182.080	6216.13	9608.74	-9601.15	-382.05	40°24'37.929"N	104°13'59.815"W	1.48	
15488.00	88.590	181.410	6217.12	9655.73	-9648.12	-383.48	40°24'37.465"N	104°13'59.833"W	1.68	
15535.00	89.100	180.250	6218.06	9702.70	-9695.10	-384.16	40°24'37.001"N	104°13'59.842"W	2.70	
15630.00	89.850	181.090	6218.93	9797.67	-9790.09	-385.27	40°24'36.062"N	104°13'59.857"W	1.19	
15654.00	89.750	181.140	6219.02	9821.66	-9814.09	-385.74	40°24'35.825"N	104°13'59.863"W	0.47	Last BHI Survey Taken
15710.00	89.750	181.140	6219.26	9877.65	-9870.08	-386.85	40°24'35.272"N	104°13'59.877"W	0.00	Projection to Bit



Actual Wellpath Report
PRONGHORN K-5-8XRLNB AWP
Page 8 of 11



REFERENCE WELLPATH IDENTIFICATION			
Operator	BONANZA CREEK OIL COMPANY	Slot	SLOT#01 PRONGHORN K-5-8XRLNB (201'FNL & 2291'FEL,SEC.5)
Area	COLORADO	Well	PRONGHORN K-5-8XRLNB
Field	WELD COUNTY	Wellbore	PRONGHORN K-5-8XRLNB AWP
Facility	SEC.05-T5N-R61W		

HOLE & CASING SECTIONS - Ref Wellbore: PRONGHORN K-5-8XRLNB AWP Ref Wellpath: PRONGHORN K-5-8XRLNB AWP									
String/Diameter	Start MD [ft]	End MD [ft]	Interval [ft]	Start TVD [ft]	End TVD [ft]	Start N/S [ft]	Start E/W [ft]	End N/S [ft]	End E/W [ft]
9.625in Casing Surface	17.00	463.00	446.00	17.00	462.99	0.00	0.00	-1.42	1.72
8.75in Open Hole	463.00	6504.00	6041.00	462.99	6184.31	-1.42	1.72	-667.55	-405.00
7in Casing Intermediate	17.00	6530.00	6513.00	17.00	6185.88	0.00	0.00	-693.48	-404.12
6.125in Open Hole	6530.00	15710.00	9180.00	6185.88	6219.26	-693.48	-404.12	-9870.08	-386.85



Actual Wellpath Report

PRONGHORN K-5-8XRLNB AWP

Page 9 of 11



REFERENCE WELLPATH IDENTIFICATION			
Operator	BONANZA CREEK OIL COMPANY	Slot	SLOT#01 PRONGHORN K-5-8XRLNB (201'FNL & 2291'FEL,SEC.5)
Area	COLORADO	Well	PRONGHORN K-5-8XRLNB
Field	WELD COUNTY	Wellbore	PRONGHORN K-5-8XRLNB AWB
Facility	SEC.05-T5N-R61W		

TARGETS									
Name	MD [ft]	TVD [ft]	North [ft]	East [ft]	Grid East [US ft]	Grid North [US ft]	Latitude	Longitude	Shape
PRONGHORN K-5-8MRLB SECTION 5		0.00	3.64	0.00	3352971.93	1404526.87	40°26'12.840"N	104°13'54.876"W	polygon
PRONGHORN K-5-8MRLB SECTION 8		0.00	3.64	0.00	3352971.93	1404526.87	40°26'12.840"N	104°13'54.876"W	polygon
HARDLINE (460' SETBACK)		6132.00	3.64	0.00	3352971.93	1404526.87	40°26'12.840"N	104°13'54.876"W	polygon
PRONGHORN K-5-8MRLB BHL REV-1 From Plat (2150'FNL & 2677'FEL,SEC.8)		6132.00	-7257.12	-381.48	3352694.33	1397261.68	40°25'01.092"N	104°13'59.808"W	point
PRONGHORN K-5-8MRLB TARGET		6132.00	-327.88	-398.07	3352578.65	1404189.70	40°26'09.564"N	104°14'00.024"W	point
PRONGHORN K-5-8XRLNB BHL REV-1 From Plat (470'FSL & 2677'FEL,SEC.8)		6132.00	-9876.53	-378.73	3352734.53	1394642.69	40°24'35.208"N	104°13'59.772"W	point
PRONGHORN K-5-8XRLNB BHL REV-2 From Plat (470'FSL & 2677'FEL'2676'FWL,SEC.8)		6212.00	-9876.53	-378.73	3352734.54	1394642.69	40°24'35.208"N	104°13'59.772"W	point
Ex.Williams 8-1 (200'R)		6811.00	-8317.27	-643.25	3352447.76	1396197.94	40°24'50.616"N	104°14'03.192"W	circle
Ex.Pronghorn 32-5 (200'R)		6825.00	-1821.57	208.79	3353206.79	1402704.90	40°25'54.804"N	104°13'52.176"W	circle
Ex.Pronghorn 14-8 (200'R)		6831.00	-9676.05	-2369.86	3350740.82	1394814.67	40°24'37.188"N	104°14'25.512"W	circle
Ex.Pronghorn 32-8 (200'R)		6836.00	-7002.11	261.74	3353333.81	1397525.86	40°25'03.612"N	104°13'51.492"W	circle

TARGETS									
Name	MD [ft]	TVD [ft]	North [ft]	East [ft]	Grid East [US ft]	Grid North [US ft]	Latitude	Longitude	Shape
Ex.Pronghorn 31-8 (200'R)		6850.00	-5767.09	314.63	3353369.04	1398761.46	40°25'15.816"N	104°13'50.808"W	circle
Ex.Stanley Furrow (200'R)		6897.00	-1750.10	-1109.38	3351887.78	1402757.51	40°25'55.510"N	104°14'09.222"W	circle



Actual Wellpath Report
PRONGHORN K-5-8XRLNB AWP
Page 10 of 11



REFERENCE WELLPATH IDENTIFICATION			
Operator	BONANZA CREEK OIL COMPANY	Slot	SLOT#01 PRONGHORN K-5-8XRLNB (201'FNL & 2291'FEL,SEC.5)
Area	COLORADO	Well	PRONGHORN K-5-8XRLNB
Field	WELD COUNTY	Wellbore	PRONGHORN K-5-8XRLNB AWB
Facility	SEC.05-T5N-R61W		

WELLPATH COMPOSITION - Ref Wellbore: PRONGHORN K-5-8XRLNB AWB Ref Wellpath: PRONGHORN K-5-8XRLNB AWP				
Start MD [ft]	End MD [ft]	Positional Uncertainty Model	Log Name/Comment	Wellbore
17.00	6523.00	NaviTrak (MagCorr)	BHI/Navitrak MWD 8.75" Hole <500'-6523'>	PRONGHORN K-5-8XRLNB AWB
6523.00	15654.00	NaviTrak (MagCorr)	BHI/Navitrak MWD 6.125" Hole <6594'-15654'>	PRONGHORN K-5-8XRLNB AWB
15654.00	15710.00	Blind Drilling (std)	Projection to bit	PRONGHORN K-5-8XRLNB AWB



Actual Wellpath Report
PRONGHORN K-5-8XRLNB AWP
Page 11 of 11



REFERENCE WELLPATH IDENTIFICATION			
Operator	BONANZA CREEK OIL COMPANY	Slot	SLOT#01 PRONGHORN K-5-8XRLNB (201'FNL & 2291'FEL,SEC.5)
Area	COLORADO	Well	PRONGHORN K-5-8XRLNB
Field	WELD COUNTY	Wellbore	PRONGHORN K-5-8XRLNB AWB
Facility	SEC.05-T5N-R61W		

WELLPATH COMMENTS				
MD [ft]	Inclination [°]	Azimuth [°]	TVD [ft]	Comment
500.00	0.620	129.520	499.99	Tie on Point
708.00	0.730	90.380	707.98	First BHI Survey Taken
15654.00	89.750	181.140	6219.02	Last BHI Survey Taken
15710.00	89.750	181.140	6219.26	Projection to Bit