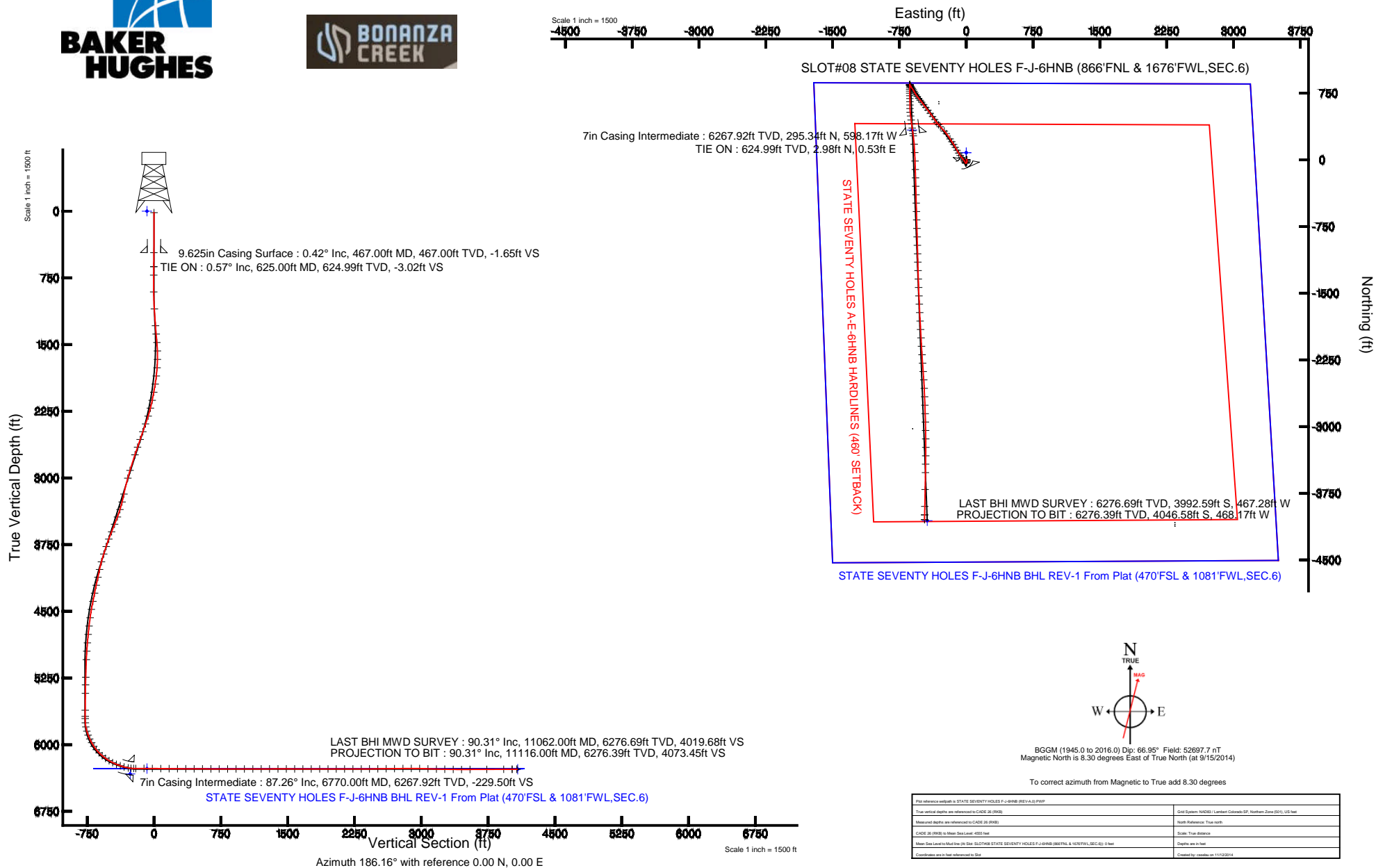


BONANZA CREEK OIL COMPANY

Location: COLORADO Slot: SLOT#08 STATE SEVENTY HOLES F-J-6HNB (866'FNL & 1676'FWL,SEC.6)
Field: WELD COUNTY Well: STATE SEVENTY HOLES F-J-6HNB
Facility: SEC.06-T4N-R62W Wellbore: STATE SEVENTY HOLES F-J-6HNB PWB



Location Information					
Facility Name		Grid East (US N)	Grid North (US N)	Latitude	Longitude
SEC.06-T4N-R62W		2044891.402	1588114.362	40°20'18.247N	104°22'04.819W
Site	Local N (ft)	Local E (ft)	Grid East (US N)	Grid North (US N)	Latitude
SLOT#08 STATE SEVENTY HOLES F-J-6HNB (866'FNL & 1676'FWL,SEC.6)	3863.77	602.08	2044895.402	1577146.362	40°20'48.102N
CAGE 36 (PWB) to Mean Sea Level (ft)					4020
Mean Sea Level to Mud Line (ft)					0
CAGE 36 (PWB) to Mean Sea Level					4020





Actual Wellpath Report

State Seventy Holes F-J-6HNB AWB

Page 1 of 6



REFERENCE WELLPATH IDENTIFICATION

Operator	BONANZA CREEK OIL COMPANY	Slot	SLOT#08 STATE SEVENTY HOLES F-J-6HNB (866'FNL & 1676'FWL,SE
Area	COLORADO	Well	STATE SEVENTY HOLES F-J-6HNB
Field	WELD COUNTY	Wellbore	State Seventy Holes F-J-6HNB PWB
Facility	SEC.06-T4N-R62W		

REPORT SETUP INFORMATION

Projection System	NAD83 / Lambert Colorado SP, Northern Zone (501), US feet	Software System	WellArchitect® 4.0.0
North Reference	True	User	Caselau
Scale	0.999958	Report Generated	11/12/2014 at 8:51:39 AM
Convergence at slot	n/a	Database/Source file	WA_Denver/State_Seventy_Holes_F-J-6HNB_PWB.xml

WELLPATH LOCATION

	Local coordinates		Grid coordinates		Geographic coordinates	
	North[ft]	East[ft]	Easting[US ft]	Northing[US ft]	Latitude	Longitude
Slot Location	3023.77	602.08	3314565.42	1371145.30	40°20'48.120"N	104°22'17.040"W
Facility Reference Pt			3314001.82	1368114.27	40°20'18.240"N	104°22'24.816"W
Field Reference Pt			3335925.10	1457282.25	40°34'56.460"N	104°17'26.016"W

WELLPATH DATUM

Calculation method	Minimum curvature	CADE 26 (RKB) to Facility Vertical Datum	4555.00ft
Horizontal Reference Pt	Slot	CADE 26 (RKB) to Mean Sea Level	4555.00ft
Vertical Reference Pt	CADE 26 (RKB)	CADE 26 (RKB) to Mud Line at Slot (SLOT#08 STATE SEVENTY HOLES F-J-6HNB (866'FNL & 1676'FWL,SEC.6))	4555.00ft
MD Reference Pt	CADE 26 (RKB)	Section Origin	N 0.00, E 0.00 ft
Field Vertical Reference	Mean Sea Level	Section Azimuth	186.16°



Actual Wellpath Report

State Seventy Holes F-J-6HNB AWB

Page 2 of 6



REFERENCE WELLPATH IDENTIFICATION

Operator	BONANZA CREEK OIL COMPANY	Slot	SLOT#08 STATE SEVENTY HOLES F-J-6HNB (866'FNL & 1676'FWL,SE
Area	COLORADO	Well	STATE SEVENTY HOLES F-J-6HNB
Field	WELD COUNTY	Wellbore	State Seventy Holes F-J-6HNB PWB
Facility	SEC.06-T4N-R62W		

WELLPATH DATA (114 stations)

MD [ft]	Inclination [°]	Azimuth [°]	TVD [ft]	Vert Sect [ft]	North [ft]	East [ft]	DLS [°/100ft]	Comments
625.00	0.570	10.120	624.99	-3.02	2.98	0.53	0.09	TIE ON
720.00	1.330	63.730	719.98	-4.08	3.93	1.60	1.15	
909.00	1.680	123.930	908.92	-3.96	3.35	5.87	0.81	
1100.00	3.670	180.720	1099.73	3.43	-4.32	8.12	1.62	
1289.00	3.990	178.120	1288.31	15.96	-16.94	8.26	0.19	
1384.00	5.190	200.020	1383.01	23.41	-24.28	6.89	2.21	
1479.00	5.840	215.190	1477.58	31.80	-32.27	2.64	1.67	
1574.00	3.630	246.190	1572.26	37.53	-37.44	-2.90	3.48	
1669.00	1.770	317.690	1667.17	38.06	-37.57	-6.64	3.68	
1763.00	4.850	336.680	1761.01	33.64	-32.84	-9.19	3.43	
1856.00	8.350	326.730	1853.38	25.00	-23.58	-14.46	3.95	
1949.00	11.380	327.240	1944.99	12.64	-10.22	-23.13	3.26	
2043.00	14.660	323.230	2036.56	-3.29	7.11	-35.27	3.62	
2137.00	16.280	319.050	2127.16	-20.97	26.60	-51.03	2.09	
2229.00	18.520	325.970	2214.95	-40.91	48.45	-67.66	3.31	
2325.00	21.270	328.980	2305.22	-66.44	76.01	-85.17	3.06	
2420.00	23.510	330.270	2393.05	-95.53	107.24	-103.45	2.41	
2515.00	22.910	330.140	2480.36	-125.84	139.73	-122.05	0.63	
2610.00	23.660	327.890	2567.62	-155.76	171.91	-141.39	1.22	
2704.00	23.650	327.230	2653.73	-185.24	203.74	-161.62	0.28	
2799.00	22.910	328.000	2740.99	-214.60	235.45	-181.73	0.84	
2988.00	22.420	322.560	2915.42	-269.64	295.27	-223.14	1.14	
3083.00	22.450	317.820	3003.23	-294.82	323.10	-246.34	1.90	
3274.00	18.130	317.060	3182.34	-338.54	371.90	-291.09	2.27	
3367.00	19.420	320.310	3270.39	-358.79	394.39	-310.82	1.79	
3459.00	23.430	322.620	3356.02	-382.71	420.71	-331.71	4.45	
3551.00	26.430	325.580	3439.44	-411.53	452.14	-354.39	3.53	
3643.00	27.600	324.980	3521.40	-443.12	486.48	-378.19	1.31	
3738.00	28.150	324.200	3605.38	-476.35	522.68	-403.93	0.69	
3832.00	26.410	322.600	3688.92	-508.00	557.28	-429.60	2.01	
3924.00	25.410	321.980	3771.67	-536.98	589.08	-454.19	1.13	
4017.00	23.340	323.040	3856.38	-564.74	619.52	-477.56	2.27	
4111.00	20.720	322.180	3943.51	-590.31	647.54	-498.95	2.81	
4202.00	17.200	321.200	4029.56	-611.42	670.75	-517.26	3.88	
4294.00	16.490	321.390	4117.61	-630.32	691.56	-533.93	0.77	
4387.00	16.330	323.300	4206.82	-649.27	712.35	-549.98	0.61	
4480.00	14.660	325.970	4296.44	-667.85	732.59	-564.38	1.95	
4575.00	13.520	331.930	4388.58	-686.22	752.35	-576.34	1.94	
4668.00	12.160	332.700	4479.26	-703.38	770.65	-585.94	1.47	
4763.00	10.090	324.160	4572.47	-717.91	786.29	-595.41	2.78	
4858.00	8.700	324.080	4666.19	-729.43	798.86	-604.49	1.46	
4953.00	7.590	325.550	4760.23	-739.53	809.85	-612.26	1.19	
5048.00	6.120	327.070	4854.55	-748.22	819.27	-618.56	1.56	
5143.00	4.940	328.630	4949.11	-755.40	827.02	-623.44	1.25	
5238.00	4.100	307.150	5043.82	-760.39	832.56	-628.28	1.97	



Actual Wellpath Report

State Seventy Holes F-J-6HNB AWB

Page 3 of 6



REFERENCE WELLPATH IDENTIFICATION

Operator	BONANZA CREEK OIL COMPANY	Slot	SLOT#08 STATE SEVENTY HOLES F-J-6HNB (866'FNL & 1676'FWL,SE
Area	COLORADO	Well	STATE SEVENTY HOLES F-J-6HNB
Field	WELD COUNTY	Wellbore	State Seventy Holes F-J-6HNB PWB
Facility	SEC.06-T4N-R62W		

WELLPATH DATA (114 stations)

MD [ft]	Inclination [°]	Azimuth [°]	TVD [ft]	Vert Sect [ft]	North [ft]	East [ft]	DLS [°/100ft]	Comments
5436.00	1.730	340.770	5241.56	-766.74	839.66	-634.91	1.43	
5522.00	1.510	343.530	5327.53	-768.96	841.97	-635.66	0.27	
5617.00	1.360	65.560	5422.51	-770.69	843.64	-634.99	1.99	
5807.00	0.500	355.740	5612.48	-772.65	845.40	-632.99	0.67	
5876.00	0.250	284.910	5681.48	-772.97	845.74	-633.16	0.70	
5901.00	0.280	255.720	5706.48	-772.95	845.73	-633.27	0.55	
5949.00	3.920	174.160	5754.44	-771.31	844.07	-633.22	8.10	
5996.00	10.370	183.140	5801.06	-765.51	838.24	-633.29	13.89	
6044.00	15.710	182.140	5847.80	-754.70	827.43	-633.77	11.13	
6091.00	20.730	181.370	5892.43	-740.06	812.75	-634.21	10.69	
6138.00	25.030	182.010	5935.72	-721.84	794.48	-634.75	9.16	
6186.00	28.650	180.510	5978.54	-700.25	772.82	-635.21	7.67	
6233.00	33.150	178.040	6018.86	-676.31	748.70	-634.87	9.95	
6280.00	39.650	178.000	6056.67	-648.71	720.84	-633.91	13.83	
6327.00	44.680	177.850	6091.50	-617.50	689.32	-632.76	10.70	
6376.00	49.920	178.930	6124.72	-581.83	653.34	-631.77	10.82	
6423.00	54.510	180.930	6153.51	-544.91	616.21	-631.74	10.33	
6471.00	58.680	178.790	6179.93	-505.10	576.15	-631.63	9.45	
6518.00	64.150	175.250	6202.42	-464.38	534.96	-629.45	13.38	
6565.00	69.440	171.830	6220.94	-422.26	492.06	-624.57	13.09	
6613.00	70.320	171.960	6237.45	-378.57	447.44	-618.21	1.85	
6659.00	74.980	172.900	6251.16	-335.93	403.93	-612.43	10.32	
6707.00	80.920	172.400	6261.18	-290.31	357.40	-606.43	12.42	
6739.00	83.660	172.440	6265.47	-259.51	325.97	-602.25	8.56	
6795.00	90.170	172.330	6268.48	-205.23	270.57	-594.84	11.63	
6890.00	90.620	175.140	6267.83	-112.46	176.15	-584.47	3.00	
6985.00	89.200	177.760	6267.98	-18.83	81.34	-578.59	3.14	
7080.00	89.040	177.840	6269.43	75.15	-13.58	-574.95	0.19	
7175.00	89.780	178.420	6270.41	169.21	-108.52	-571.85	0.99	
7269.00	89.690	178.350	6270.85	262.35	-202.48	-569.20	0.12	
7364.00	89.410	178.340	6271.59	356.46	-297.44	-566.45	0.29	
7459.00	90.060	178.570	6272.03	450.61	-392.40	-563.89	0.73	
7553.00	89.720	178.630	6272.21	543.79	-486.37	-561.60	0.37	
7648.00	89.510	178.240	6272.85	637.93	-581.34	-559.00	0.47	
7742.00	90.060	178.550	6273.20	731.06	-675.30	-556.37	0.67	
7838.00	89.820	178.340	6273.31	826.20	-771.26	-553.76	0.33	
7933.00	90.220	178.430	6273.27	920.32	-866.23	-551.09	0.43	
8028.00	90.000	178.370	6273.09	1014.45	-961.19	-548.43	0.24	
8123.00	90.060	178.410	6273.04	1108.58	-1056.15	-545.76	0.08	
8218.00	90.120	178.570	6272.89	1202.73	-1151.12	-543.26	0.18	
8313.00	90.180	178.330	6272.64	1296.88	-1246.08	-540.69	0.26	
8408.00	90.090	178.280	6272.42	1390.98	-1341.04	-537.88	0.11	
8503.00	89.940	178.090	6272.39	1485.07	-1435.99	-534.87	0.25	
8598.00	89.660	177.090	6272.72	1579.01	-1530.91	-530.88	1.09	
8691.00	89.850	177.580	6273.12	1670.90	-1623.81	-526.55	0.57	



Actual Wellpath Report

State Seventy Holes F-J-6HNB AWB

Page 4 of 6



REFERENCE WELLPATH IDENTIFICATION

Operator	BONANZA CREEK OIL COMPANY	Slot	SLOT#08 STATE SEVENTY HOLES F-J-6HNB (866'FNL & 1676'FWL,SE
Area	COLORADO	Well	STATE SEVENTY HOLES F-J-6HNB
Field	WELD COUNTY	Wellbore	State Seventy Holes F-J-6HNB PWB
Facility	SEC.06-T4N-R62W		

WELLPATH DATA (114 stations)

MD [ft]	Inclination [°]	Azimuth [°]	TVD [ft]	Vert Sect [ft]	North [ft]	East [ft]	DLS [°/100ft]	Comments
8786.00	89.910	177.530	6273.32	1764.84	-1718.72	-522.50	0.08	
8881.00	90.120	176.810	6273.30	1858.67	-1813.60	-517.81	0.79	
8976.00	89.970	176.890	6273.22	1952.42	-1908.46	-512.59	0.18	
9070.00	90.090	176.830	6273.17	2045.18	-2002.32	-507.44	0.14	
9165.00	90.060	176.740	6273.05	2138.92	-2097.17	-502.11	0.10	
9260.00	90.000	176.320	6273.00	2232.58	-2191.99	-496.36	0.45	
9355.00	89.970	175.980	6273.02	2326.13	-2286.78	-489.98	0.36	
9449.00	90.220	176.030	6272.87	2418.66	-2380.55	-483.44	0.27	
9544.00	91.080	176.080	6271.79	2512.18	-2475.32	-476.90	0.91	
9639.00	90.370	177.440	6270.59	2605.90	-2570.16	-471.53	1.61	
9734.00	90.800	177.790	6269.62	2699.84	-2665.07	-467.58	0.58	
9829.00	90.460	178.110	6268.57	2793.86	-2760.00	-464.18	0.49	
9924.00	90.520	177.970	6267.76	2887.91	-2854.94	-460.93	0.16	
10018.00	88.240	178.850	6268.78	2981.04	-2948.89	-458.32	2.60	
10113.00	88.150	178.720	6271.77	3075.20	-3043.82	-456.31	0.17	
10208.00	88.730	179.350	6274.36	3169.44	-3138.78	-454.71	0.90	
10303.00	88.650	179.660	6276.53	3263.77	-3233.75	-453.89	0.34	
10398.00	89.110	181.130	6278.39	3358.27	-3328.72	-454.55	1.62	
10492.00	89.910	180.900	6279.19	3451.89	-3422.70	-456.21	0.89	
10587.00	90.340	181.200	6278.98	3546.51	-3517.69	-457.95	0.55	
10777.00	90.280	180.970	6277.95	3735.77	-3707.65	-461.55	0.13	
10967.00	90.220	181.340	6277.13	3925.04	-3897.61	-465.38	0.20	
11062.00	90.310	180.950	6276.69	4019.68	-3992.59	-467.28	0.42	LAST BHI MWD SURVEY
11116.00	90.310	180.950	6276.39	4073.45	-4046.58	-468.17	0.00	PROJECTION TO BIT

HOLE & CASING SECTIONS - Ref Wellbore: State Seventy Holes F-J-6HNB PWB Ref Wellpath: State Seventy Holes F-J-6HNB AWB

String/Diameter	Start MD [ft]	End MD [ft]	Interval [ft]	Start TVD [ft]	End TVD [ft]	Start N/S [ft]	Start E/W [ft]	End N/S [ft]	End E/W [ft]
9.625in Casing Surface	17.00	467.00	450.00	17.00	467.00	0.00	0.00	1.63	0.29
8.75in Open Hole	467.00	6782.00	6315.00	467.00	6268.35	1.63	0.29	283.45	-596.57
7in Casing Intermediate	17.00	6770.00	6753.00	17.00	6267.92	0.00	0.00	295.34	-598.17
6.125in Open Hole	6782.00	11021.00	4239.00	6268.35	6276.89	283.45	-596.57	-3951.60	-466.54



Actual Wellpath Report

State Seventy Holes F-J-6HNB AWB

Page 5 of 6



REFERENCE WELLPATH IDENTIFICATION

Operator	BONANZA CREEK OIL COMPANY	Slot	SLOT#08 STATE SEVENTY HOLES F-J-6HNB (866'FNL & 1676'FWL,SE
Area	COLORADO	Well	STATE SEVENTY HOLES F-J-6HNB
Field	WELD COUNTY	Wellbore	State Seventy Holes F-J-6HNB PWB
Facility	SEC.06-T4N-R62W		

TARGETS

Name	MD [ft]	TVD [ft]	North [ft]	East [ft]	Grid East [US ft]	Grid North [US ft]	Latitude	Longitude	Shape
STATE SEVENTY HOLES A-E-6HNB SECTION 6		0.00	80.15	0.00	3314564.40	1371225.44	40°20'48.912"N	104°22'17.040"W	polygon
STATE SEVENTY HOLES A-E-6HNB HARDLINES (460' SETBACK)		6269.00	80.15	0.00	3314564.40	1371225.44	40°20'48.912"N	104°22'17.040"W	polygon
STATE SEVENTY HOLES F-J-6HNB BHL REV-1 From Plat (470'FSL & 1081'FWL,SEC.6)		6276.00	-4058.39	-437.70	3314179.43	1367081.85	40°20'08.016"N	104°22'22.692"W	point
STATE SEVENTY HOLES F-J-6HNB TARGET		6329.00	335.17	-607.65	3313953.58	1371472.70	40°20'51.432"N	104°22'24.888"W	point

WELLPATH COMPOSITION - Ref Wellbore: State Seventy Holes F-J-6HNB PWB Ref Wellpath: State Seventy Holes F-J-6HNB AWB

Start MD [ft]	End MD [ft]	Positional Uncertainty Model	Log Name/Comment	Wellbore
17.00	6739.00	NaviTrak (MagCorr)	INTEQ/NAVITRAK (MAGCORR) MWD 8.75" <17-6739>	State Seventy Holes F-J-6HNB PWB
6739.00	11062.00	NaviTrak (MagCorr)	INTEQ/NAVITRAK (MAGCORR) MWD 6 1/8" <6795-11062>	State Seventy Holes F-J-6HNB PWB
11062.00	11116.00	Blind Drilling (std)	Projection to bit	State Seventy Holes F-J-6HNB PWB



Actual Wellpath Report

State Seventy Holes F-J-6HNB AWB

Page 6 of 6



REFERENCE WELLPATH IDENTIFICATION

Operator	BONANZA CREEK OIL COMPANY	Slot	SLOT#08 STATE SEVENTY HOLES F-J-6HNB (866'FNL & 1676'FWL,SE
Area	COLORADO	Well	STATE SEVENTY HOLES F-J-6HNB
Field	WELD COUNTY	Wellbore	State Seventy Holes F-J-6HNB PWB
Facility	SEC.06-T4N-R62W		

WELLPATH COMMENTS

MD [ft]	Inclination [°]	Azimuth [°]	TVD [ft]	Comment
625.00	0.570	10.120	624.99	TIE ON
11062.00	90.310	180.950	6276.69	LAST BHI MWD SURVEY
11116.00	90.310	180.950	6276.39	PROJECTION TO BIT