



410 17th Street, Suite 1500
Denver, CO 80202
(720) 440-6100 phone
(720) 305-0804 fax

Bonanzacrk.com

November 18, 2014

Colorado Oil and Gas Conservation Commission
The Chancery Building
1120 Lincoln Street, Suite 801
Denver, CO 80203

Attn: Matthew Lepore, Director

Re: Notice of 318A.a(4).D Well Proposal
State Antelope B12-V42-2HNC
SHL: NWNW (1399' FNL, 354' FWL) Section 2-T5N-R62W, Weld County, CO
Top of Production: (1650' FNL and 631' FWL) Section 2-T5N-R62W, Weld County, CO
Bottom of Production: (1650' FNL and 470' FEL) Section 2-T5N-R62W, Weld County, CO

Dear Director Lepore:

Bonanza Creek Energy, Inc. (Bonanza) intends to permit, drill and operate the referenced Niobrara Horizontal Well. As defined by Colorado Oil and Gas Conservation Commission (COGCC) Rule 318A.a.(4)D., Bonanza proposes the following wellbore spacing unit:

Lots 1 – 4 & S/2N/2 Section 2-T5N-R62W, Weld County, CO – containing 320 acres more or less

Bonanza is the sole mineral lease holder in the proposed spacing unit, and no mineral owner notifications were required.

Bonanza respectfully requests that you review the enclosed wellbore spacing unit documentation and approve the referenced APD.

Please do not hesitate to call or email me at (720) 440-6112 or Kcaplan@Bonanzacrk.com, should you have any questions pertaining to this matter.

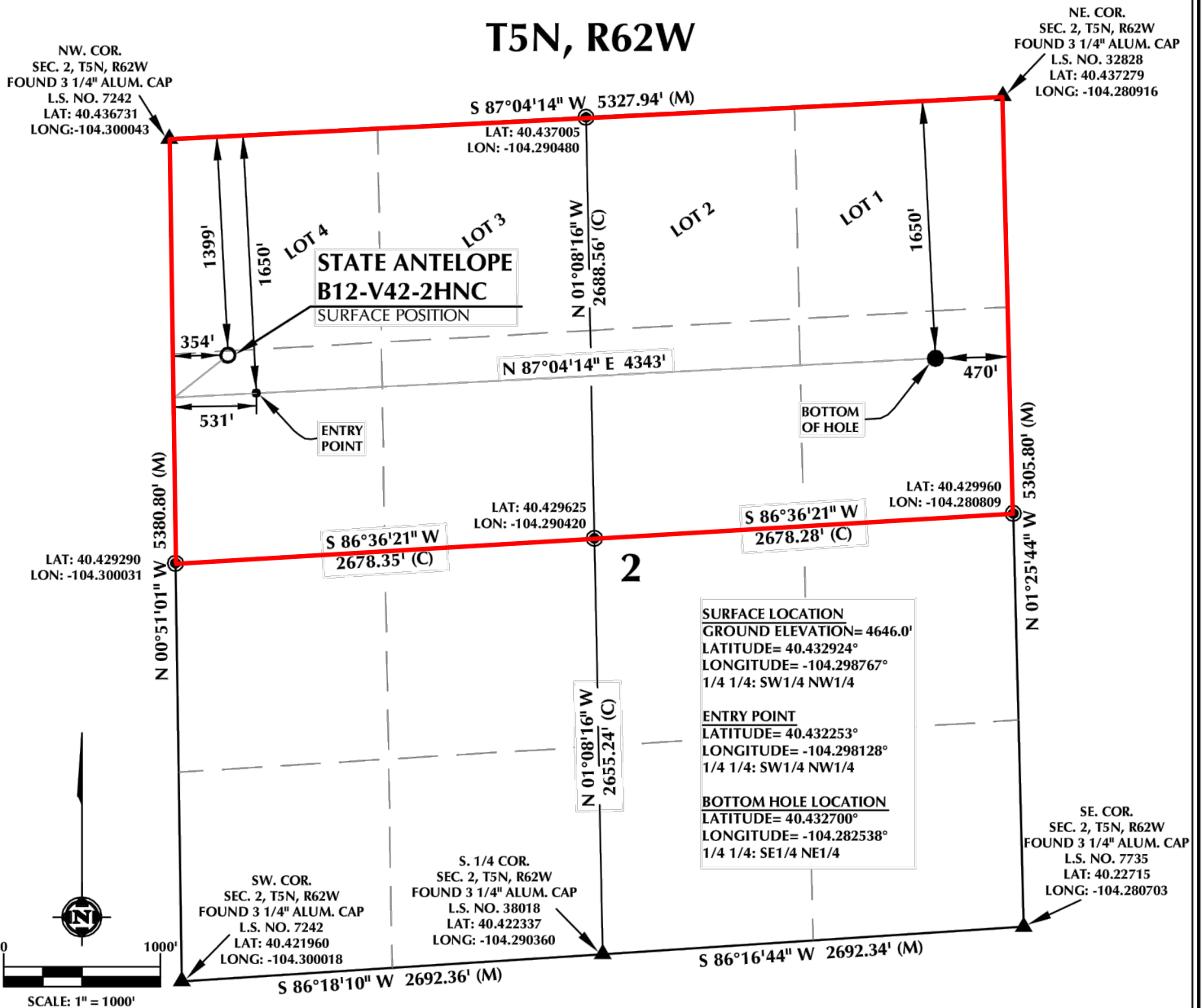
Thank you for your cooperation.

Sincerely,

Keith Caplan,
Sr. Regulatory Specialist
BONANZA CREEK ENERGY, INC.
BONANZA CREEK ENERGY OPERATING COMPANY, LLC

Enclosure

T5N, R62W



CERTIFICATE OF SURVEYOR:

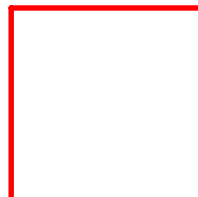
THIS IS TO CERTIFY THAT THE ABOVE PLAT WAS PREPARED FROM FIELD NOTES OF ACTUAL SURVEY MADE BY ME OR UNDER MY SUPERVISION AND THAT THE SAME ARE TRUE AND CORRECT TO THE BEST OF MY KNOWLEDGE AND BELIEF.

NEAREST CULTURAL ITEMS:

BUILDING: 5280'+
BUILDING UNIT: 5280'+
HIGH OCCUPANCY BUILDING UNIT: 5280'+
DESIGNATED OUTSIDE ACTIVITY AREA: 5280'+

NOTES:

- ▲ INDICATES FOUND SECTION CORNER
- INDICATES CALCULATED CORNER
- DRAWING LATITUDE AND LONGITUDE COORDINATES ARE NAD83 (2011)(EPOCH:2010)
- ELEVATION BASED ON NAVD88 (GEOID09)
- BASIS OF BEARING DERIVED FROM COLORADO COORDINATE



Wellbore Spacing Unit Outline



Wellbore Spacing Unit Map

18 November 2014 ksc

State Antelope B12-V42-2HNC
Lots 1-4 Sec 2-T5N-R62W 6th PM
S/2N/2 Sec 2-T5N-R62W 6th PM
Weld County, Colorado