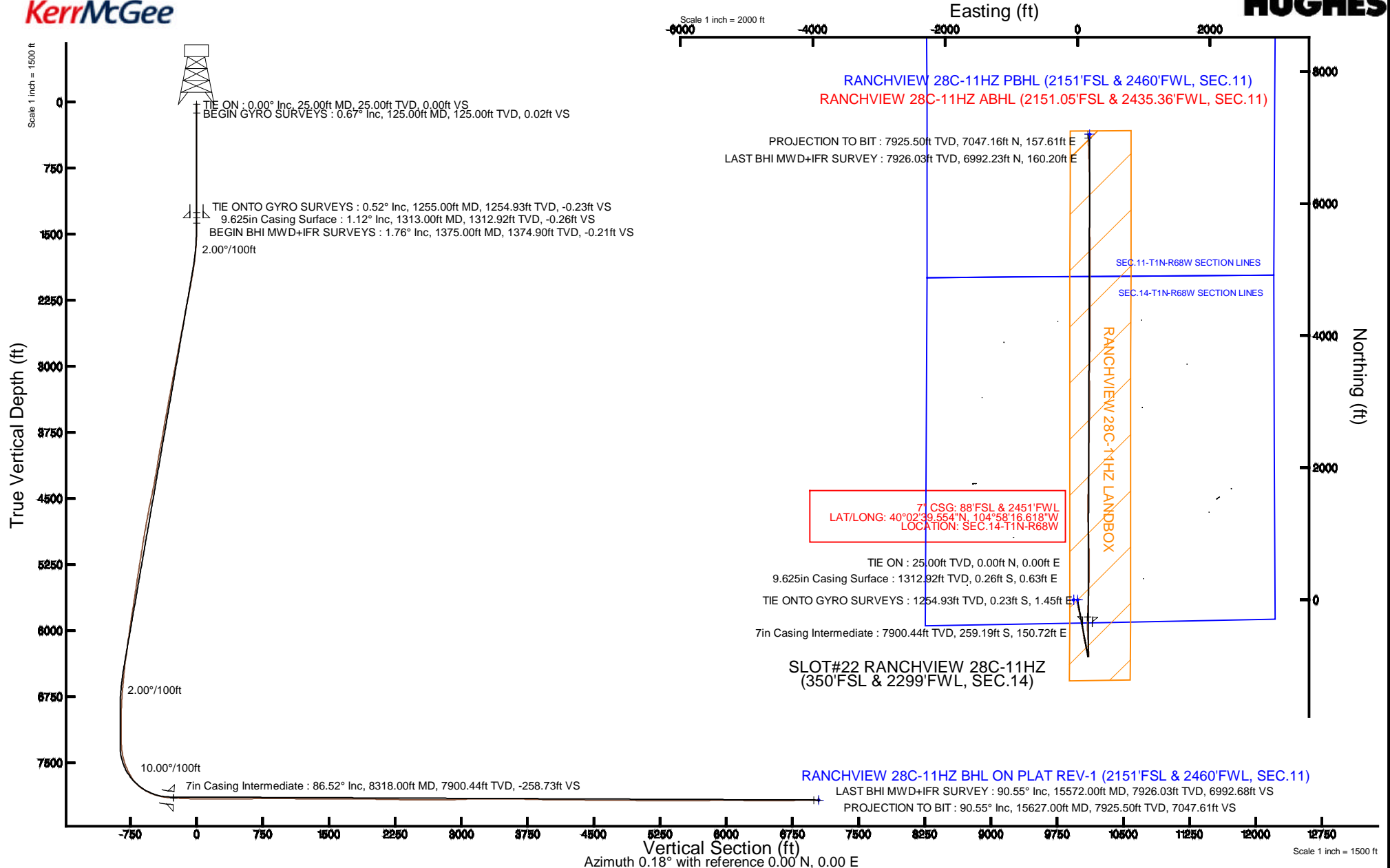


# KERR-MCGEE OIL & GAS ONSHORE LP

Location: COLORADO Slot: SLOT#22 RANCHVIEW 28C-11HZ (350'FSL & 2299'FWL, SEC.14)  
 Field: WELD COUNTY (KERR MCGEE) Well: RANCHVIEW 28C-11HZ  
 Facility: SEC.14-T1N-R68W Wellbore: RANCHVIEW 28C-11HZ PWB

Plot reference wellpath is RANCHVIEW 28C-11HZ (REV-A.0) PWP

True vertical depths are referenced to H&P 307 (25KB) (RKB)	Grid System: NAD83 / Lambert Colorado SP, Northern Zone (501), US feet
Measured depths are referenced to H&P 307 (25KB) (RKB)	North Reference: True north
H&P 307 (25KB) (RKB) to Mean Sea Level: 5169 feet	Scale: True distance
Mean Sea Level to Mud line (At Slot: SLOT#22 RANCHVIEW 28C-11HZ (350'FSL & 2299'FWL, SEC.14)): 0 feet	Depths are in feet
Coordinates are in feet referenced to Slot	Created by: robiale01 on 10/9/2014



REFERENCE WELLPATH IDENTIFICATION			
Operator	KERR-MCGEE OIL & GAS ONSHORE LP	Slot	SLOT#22 RANCHVIEW 28C-11HZ (350'FSL & 2299'FWL, SEC.14)
Area	COLORADO	Well	RANCHVIEW 28C-11HZ
Field	WELD COUNTY (KERR MCGEE)	Wellbore	RANCHVIEW 28C-11HZ AWB
Facility	SEC.14-T1N-R68W		

REPORT SETUP INFORMATION			
Projection System	NAD83 / Lambert Colorado SP, Northern Zone (501), US feet	Software System	WellArchitect® 4.0.0
North Reference	True	User	Robiale01
Scale	0.999963	Report Generated	10/9/2014 at 4:25:42 PM
Convergence at slot	n/a	Database/Source file	WellArchitectDB/RANCHVIEW_28C-11HZ_AWB.xml

WELLPATH LOCATION						
	Local coordinates		Grid coordinates		Geographic coordinates	
	North[ft]	East[ft]	Easting[US ft]	Northing[US ft]	Latitude	Longitude
Slot Location	-1556.54	-2141.07	3147872.63	1259691.22	40°02'42.115"N	104°58'18.556"W
Facility Reference Pt			3150004.17	1261260.61	40°02'57.498"N	104°57'51.026"W
Field Reference Pt			3197771.84	1268891.29	40°04'09.600"N	104°47'36.000"W

WELLPATH DATUM			
Calculation method	Minimum curvature	H&P 307 (25'KB) (RKB) to Facility Vertical Datum	5169.00ft
Horizontal Reference Pt	Slot	H&P 307 (25'KB) (RKB) to Mean Sea Level	5169.00ft
Vertical Reference Pt	H&P 307 (25'KB) (RKB)	H&P 307 (25'KB) (RKB) to Mud Line at Slot (SLOT#22 RANCHVIEW 28C-11HZ (350'FSL & 2299'FWL, SEC.14))	5169.00ft
MD Reference Pt	H&P 307 (25'KB) (RKB)	Section Origin	N 0.00, E 0.00 ft
Field Vertical Reference	Mean Sea Level	Section Azimuth	1.28°

REFERENCE WELLPATH IDENTIFICATION			
Operator	KERR-MCGEE OIL & GAS ONSHORE LP	Slot	SLOT#22 RANCHVIEW 28C-11HZ (350'FSL & 2299'FWL, SEC.14)
Area	COLORADO	Well	RANCHVIEW 28C-11HZ
Field	WELD COUNTY (KERR MCGEE)	Wellbore	RANCHVIEW 28C-11HZ AWB
Facility	SEC.14-T1N-R68W		

WELLPATH DATA (178 stations) † = interpolated/extrapolated station										
MD [ft]	Inclination [°]	Azimuth [°]	TVD [ft]	Vert Sect [ft]	North [ft]	East [ft]	Latitude	Longitude	DLS [°/100ft]	Comments
0.00†	0.000	88.490	0.00	0.00	0.00	0.00	40°02'42.115"N	104°58'18.556"W	0.00	
25.00	0.000	88.490	25.00	0.00	0.00	0.00	40°02'42.115"N	104°58'18.556"W	0.00	TIE ON
125.00	0.670	88.490	125.00	0.03	0.02	0.58	40°02'42.115"N	104°58'18.548"W	0.67	BEGIN GYRO SURVEYS
225.00	0.900	53.090	224.99	0.54	0.50	1.80	40°02'42.120"N	104°58'18.533"W	0.53	
325.00	0.770	64.120	324.98	1.33	1.27	3.03	40°02'42.128"N	104°58'18.517"W	0.21	
425.00	0.740	128.470	424.97	1.25	1.16	4.14	40°02'42.126"N	104°58'18.503"W	0.80	
525.00	0.740	122.670	524.96	0.52	0.41	5.19	40°02'42.119"N	104°58'18.489"W	0.07	
625.00	0.440	72.570	624.96	0.31	0.18	6.10	40°02'42.117"N	104°58'18.478"W	0.57	
725.00	0.550	322.270	724.96	0.81	0.67	6.17	40°02'42.122"N	104°58'18.477"W	0.81	
825.00	0.410	223.590	824.95	0.92	0.79	5.63	40°02'42.123"N	104°58'18.484"W	0.73	
925.00	0.790	224.870	924.95	0.15	0.04	4.90	40°02'42.115"N	104°58'18.493"W	0.38	
1025.00	0.550	285.950	1024.94	-0.23	-0.31	3.95	40°02'42.112"N	104°58'18.505"W	0.71	
1125.00	0.620	281.040	1124.94	-0.01	-0.08	2.96	40°02'42.114"N	104°58'18.518"W	0.09	
1225.00	0.770	253.960	1224.93	-0.12	-0.16	1.78	40°02'42.113"N	104°58'18.533"W	0.36	
1255.00	0.520	262.550	1254.93	-0.20	-0.23	1.45	40°02'42.113"N	104°58'18.537"W	0.89	TIE ONTO GYRO SURVEYS
1375.00	1.760	273.080	1374.90	-0.23	-0.21	-0.93	40°02'42.113"N	104°58'18.568"W	1.04	BEGIN BHI MWD+IFR SURVEYS
1467.00	0.210	253.900	1466.89	-0.23	-0.18	-2.50	40°02'42.113"N	104°58'18.588"W	1.70	
1559.00	2.500	181.670	1558.86	-2.29	-2.23	-2.72	40°02'42.093"N	104°58'18.591"W	2.66	
1651.00	4.270	183.160	1650.69	-7.72	-7.66	-2.97	40°02'42.039"N	104°58'18.594"W	1.93	
1742.00	6.230	184.530	1741.31	-16.04	-15.96	-3.55	40°02'41.957"N	104°58'18.602"W	2.16	
1834.00	7.620	180.660	1832.63	-27.12	-27.04	-4.01	40°02'41.848"N	104°58'18.608"W	1.59	
1926.00	9.120	173.970	1923.65	-40.45	-40.39	-3.31	40°02'41.716"N	104°58'18.599"W	1.94	
2018.00	10.380	172.940	2014.32	-55.89	-55.86	-1.53	40°02'41.563"N	104°58'18.576"W	1.38	
2110.00	11.450	168.220	2104.66	-72.98	-73.03	1.35	40°02'41.393"N	104°58'18.539"W	1.51	
2201.00	11.380	165.230	2193.86	-90.41	-90.55	5.49	40°02'41.220"N	104°58'18.485"W	0.65	
2294.00	10.840	164.500	2285.12	-107.60	-107.85	10.16	40°02'41.049"N	104°58'18.425"W	0.60	
2387.00	11.060	168.640	2376.42	-124.68	-125.03	14.26	40°02'40.879"N	104°58'18.373"W	0.88	
2480.00	10.370	167.440	2467.80	-141.51	-141.94	17.83	40°02'40.712"N	104°58'18.327"W	0.78	
2573.00	11.520	172.200	2559.11	-158.81	-159.31	20.91	40°02'40.541"N	104°58'18.287"W	1.57	
2666.00	10.910	168.760	2650.33	-176.57	-177.15	23.89	40°02'40.364"N	104°58'18.249"W	0.97	
2760.00	10.190	165.360	2742.75	-193.25	-193.92	27.73	40°02'40.199"N	104°58'18.200"W	1.01	
2851.00	11.240	167.420	2832.16	-209.60	-210.36	31.69	40°02'40.036"N	104°58'18.149"W	1.23	
2945.00	10.290	168.490	2924.50	-226.68	-227.53	35.36	40°02'39.866"N	104°58'18.101"W	1.03	
3038.00	11.890	168.200	3015.76	-244.12	-245.05	38.98	40°02'39.693"N	104°58'18.055"W	1.72	
3132.00	10.790	165.900	3107.93	-262.03	-263.06	43.10	40°02'39.515"N	104°58'18.002"W	1.27	
3226.00	11.150	169.100	3200.21	-279.40	-280.52	46.97	40°02'39.343"N	104°58'17.952"W	0.75	
3320.00	9.740	168.760	3292.65	-296.05	-297.24	50.23	40°02'39.178"N	104°58'17.910"W	1.50	
3415.00	10.450	169.990	3386.18	-312.34	-313.61	53.30	40°02'39.016"N	104°58'17.871"W	0.78	
3509.00	11.320	171.010	3478.49	-329.78	-331.12	56.22	40°02'38.843"N	104°58'17.833"W	0.95	
3603.00	9.610	172.270	3570.92	-346.61	-348.01	58.72	40°02'38.676"N	104°58'17.801"W	1.84	
3697.00	9.900	167.040	3663.56	-362.19	-363.66	61.59	40°02'38.521"N	104°58'17.764"W	0.99	
3792.00	10.240	167.040	3757.10	-378.29	-379.84	65.31	40°02'38.361"N	104°58'17.716"W	0.36	
3886.00	10.890	164.270	3849.51	-394.88	-396.53	69.59	40°02'38.196"N	104°58'17.661"W	0.88	
3980.00	11.490	171.810	3941.72	-412.61	-414.35	73.33	40°02'38.020"N	104°58'17.613"W	1.68	
4075.00	8.640	170.850	4035.25	-428.96	-430.76	75.82	40°02'37.858"N	104°58'17.581"W	3.01	

REFERENCE WELLPATH IDENTIFICATION			
Operator	KERR-MCGEE OIL & GAS ONSHORE LP	Slot	SLOT#22 RANCHVIEW 28C-11HZ (350'FSL & 2299'FWL, SEC.14)
Area	COLORADO	Well	RANCHVIEW 28C-11HZ
Field	WELD COUNTY (KERR MCGEE)	Wellbore	RANCHVIEW 28C-11HZ AWB
Facility	SEC.14-T1N-R68W		

WELLPATH DATA (178 stations)										
MD [ft]	Inclination [°]	Azimuth [°]	TVD [ft]	Vert Sect [ft]	North [ft]	East [ft]	Latitude	Longitude	DLS [°/100ft]	Comments
4169.00	9.020	165.890	4128.14	-443.01	-444.88	78.74	40°02'37.719"N	104°58'17.544"W	0.90	
4263.00	10.340	173.780	4220.80	-458.48	-460.41	81.45	40°02'37.565"N	104°58'17.509"W	1.99	
4357.00	10.610	174.010	4313.24	-475.43	-477.41	83.26	40°02'37.397"N	104°58'17.485"W	0.29	
4452.00	11.640	171.090	4406.45	-493.53	-495.57	85.66	40°02'37.218"N	104°58'17.455"W	1.24	
4546.00	11.580	171.960	4498.53	-512.18	-514.28	88.45	40°02'37.033"N	104°58'17.419"W	0.20	
4641.00	11.730	174.680	4591.57	-531.18	-533.34	90.68	40°02'36.844"N	104°58'17.390"W	0.60	
4735.00	10.760	171.200	4683.76	-549.31	-551.53	92.91	40°02'36.665"N	104°58'17.361"W	1.26	
4830.00	9.750	170.100	4777.25	-565.93	-568.21	95.65	40°02'36.500"N	104°58'17.326"W	1.08	
4924.00	10.250	168.180	4869.82	-581.89	-584.24	98.73	40°02'36.341"N	104°58'17.287"W	0.64	
5018.00	9.800	170.050	4962.38	-597.88	-600.31	101.82	40°02'36.183"N	104°58'17.247"W	0.59	
5113.00	8.790	170.010	5056.13	-612.93	-615.42	104.48	40°02'36.033"N	104°58'17.213"W	1.06	
5207.00	9.160	166.260	5148.98	-627.20	-629.76	107.50	40°02'35.892"N	104°58'17.174"W	0.74	
5301.00	9.370	163.190	5241.76	-641.70	-644.35	111.49	40°02'35.747"N	104°58'17.122"W	0.57	
5395.00	9.580	165.860	5334.48	-656.51	-659.26	115.62	40°02'35.600"N	104°58'17.069"W	0.52	
5490.00	8.230	167.290	5428.33	-670.73	-673.56	119.04	40°02'35.459"N	104°58'17.025"W	1.44	
5584.00	8.630	171.780	5521.31	-684.22	-687.11	121.53	40°02'35.325"N	104°58'16.993"W	0.82	
5678.00	8.700	168.020	5614.24	-698.09	-701.04	124.02	40°02'35.187"N	104°58'16.961"W	0.61	
5773.00	9.000	165.550	5708.11	-712.24	-715.27	127.36	40°02'35.047"N	104°58'16.918"W	0.51	
5867.00	9.540	168.540	5800.88	-726.91	-730.02	130.75	40°02'34.901"N	104°58'16.875"W	0.77	
5961.00	7.950	165.880	5893.79	-740.78	-743.96	133.88	40°02'34.763"N	104°58'16.835"W	1.74	
6055.00	8.660	167.010	5986.80	-753.91	-757.16	137.06	40°02'34.633"N	104°58'16.794"W	0.77	
6150.00	8.970	165.780	6080.68	-767.97	-771.31	140.48	40°02'34.493"N	104°58'16.750"W	0.38	
6244.00	7.420	164.950	6173.72	-780.86	-784.27	143.86	40°02'34.365"N	104°58'16.706"W	1.65	
6339.00	7.930	166.390	6267.87	-793.08	-796.57	146.99	40°02'34.243"N	104°58'16.666"W	0.57	
6433.00	7.530	165.430	6361.01	-805.27	-808.83	150.07	40°02'34.122"N	104°58'16.626"W	0.45	
6528.00	5.830	161.260	6455.36	-815.79	-819.42	153.19	40°02'34.017"N	104°58'16.586"W	1.86	
6623.00	5.490	165.430	6549.90	-824.70	-828.39	155.88	40°02'33.929"N	104°58'16.552"W	0.56	
6717.00	5.190	172.090	6643.49	-833.22	-836.96	157.59	40°02'33.844"N	104°58'16.530"W	0.73	
6812.00	4.140	172.410	6738.18	-840.85	-844.61	158.64	40°02'33.768"N	104°58'16.516"W	1.11	
6906.00	2.740	167.100	6832.01	-846.38	-850.16	159.59	40°02'33.713"N	104°58'16.504"W	1.53	
7001.00	1.780	154.540	6926.93	-849.90	-853.71	160.73	40°02'33.678"N	104°58'16.489"W	1.13	
7095.00	1.200	138.000	7020.90	-851.92	-855.76	162.02	40°02'33.658"N	104°58'16.473"W	0.76	
7189.00	1.110	101.500	7114.88	-852.80	-856.67	163.57	40°02'33.649"N	104°58'16.453"W	0.77	
7284.00	0.740	42.700	7209.87	-852.50	-856.40	164.89	40°02'33.652"N	104°58'16.436"W	1.01	
7379.00	4.320	10.120	7304.77	-848.51	-852.43	165.93	40°02'33.691"N	104°58'16.423"W	3.91	
7426.00	7.410	3.450	7351.51	-843.73	-847.66	166.42	40°02'33.738"N	104°58'16.416"W	6.72	
7473.00	10.170	357.330	7397.96	-836.56	-840.49	166.41	40°02'33.809"N	104°58'16.416"W	6.19	
7520.00	13.500	0.090	7443.95	-826.93	-830.86	166.23	40°02'33.904"N	104°58'16.419"W	7.18	
7567.00	16.900	0.620	7489.30	-814.61	-818.54	166.31	40°02'34.026"N	104°58'16.418"W	7.24	
7614.00	20.370	358.360	7533.83	-799.61	-803.52	166.15	40°02'34.174"N	104°58'16.420"W	7.54	
7661.00	23.620	354.830	7577.41	-782.08	-785.96	165.07	40°02'34.348"N	104°58'16.434"W	7.46	
7710.00	27.730	355.480	7621.56	-760.97	-764.81	163.28	40°02'34.557"N	104°58'16.457"W	8.41	
7755.00	32.130	357.400	7660.55	-738.60	-742.41	161.92	40°02'34.778"N	104°58'16.474"W	10.01	
7802.00	37.600	358.670	7699.10	-711.79	-715.57	161.01	40°02'35.044"N	104°58'16.486"W	11.74	
7850.00	42.900	359.350	7735.72	-680.81	-684.57	160.49	40°02'35.350"N	104°58'16.492"W	11.08	

REFERENCE WELLPATH IDENTIFICATION			
Operator	KERR-MCGEE OIL & GAS ONSHORE LP	Slot	SLOT#22 RANCHVIEW 28C-11HZ (350'FSL & 2299'FWL, SEC.14)
Area	COLORADO	Well	RANCHVIEW 28C-11HZ
Field	WELD COUNTY (KERR MCGEE)	Wellbore	RANCHVIEW 28C-11HZ AWB
Facility	SEC.14-T1N-R68W		

WELLPATH DATA (178 stations) † = interpolated/extrapolated station										
MD [ft]	Inclination [°]	Azimuth [°]	TVD [ft]	Vert Sect [ft]	North [ft]	East [ft]	Latitude	Longitude	DLS [°/100ft]	Comments
7944.00	55.830	357.000	7796.81	-609.75	-613.44	158.08	40°02'36.053"N	104°58'16.523"W	13.88	
7991.00	61.540	356.450	7821.23	-569.74	-573.37	155.78	40°02'36.449"N	104°58'16.553"W	12.19	
8039.00	66.400	357.490	7842.29	-526.75	-530.31	153.51	40°02'36.874"N	104°58'16.582"W	10.31	
8086.00	70.440	358.050	7859.57	-483.13	-486.65	151.81	40°02'37.306"N	104°58'16.604"W	8.67	
8133.00	74.750	357.880	7873.63	-438.37	-441.84	150.22	40°02'37.749"N	104°58'16.624"W	9.18	
8180.00	78.780	359.650	7884.39	-392.67	-396.11	149.24	40°02'38.201"N	104°58'16.637"W	9.32	
8227.00	81.950	0.460	7892.25	-346.35	-349.78	149.29	40°02'38.658"N	104°58'16.636"W	6.96	
8286.00	86.110	0.970	7898.39	-287.69	-291.12	150.02	40°02'39.238"N	104°58'16.627"W	7.10	
8318.00†	86.523	1.551	7900.44	-255.76	-259.19	150.72	40°02'39.554"N	104°58'16.618"W	2.22	7" CASING POINT
8372.00	87.220	2.530	7903.39	-201.84	-205.31	152.64	40°02'40.086"N	104°58'16.593"W	2.22	
8464.00	87.190	2.770	7907.88	-109.98	-113.51	156.89	40°02'40.993"N	104°58'16.539"W	0.26	
8556.00	89.660	2.910	7910.41	-18.05	-21.67	161.45	40°02'41.901"N	104°58'16.480"W	2.69	
8648.00	90.240	1.930	7910.49	73.93	70.25	165.33	40°02'42.809"N	104°58'16.430"W	1.24	
8739.00	90.330	2.110	7910.03	164.92	161.19	168.54	40°02'43.708"N	104°58'16.389"W	0.22	
8832.00	89.500	1.060	7910.17	257.91	254.15	171.11	40°02'44.627"N	104°58'16.356"W	1.44	
8925.00	89.470	1.380	7911.01	350.91	347.13	173.09	40°02'45.545"N	104°58'16.330"W	0.35	
9018.00	89.530	0.160	7911.82	443.90	440.11	174.34	40°02'46.464"N	104°58'16.314"W	1.31	
9111.00	91.130	0.300	7911.28	536.88	533.11	174.71	40°02'47.383"N	104°58'16.309"W	1.73	
9204.00	91.410	0.360	7909.22	629.85	626.08	175.25	40°02'48.302"N	104°58'16.303"W	0.31	
9298.00	90.240	357.730	7907.87	723.75	720.05	173.68	40°02'49.231"N	104°58'16.323"W	3.06	
9389.00	90.430	357.520	7907.34	814.57	810.97	169.91	40°02'50.129"N	104°58'16.371"W	0.31	
9483.00	89.590	358.620	7907.32	908.42	904.92	166.75	40°02'51.058"N	104°58'16.412"W	1.47	
9575.00	89.780	358.330	7907.83	1000.31	996.88	164.30	40°02'51.966"N	104°58'16.443"W	0.38	
9668.00	89.470	357.310	7908.44	1093.13	1089.81	160.76	40°02'52.885"N	104°58'16.489"W	1.15	
9763.00	88.580	358.770	7910.05	1187.96	1184.74	157.51	40°02'53.823"N	104°58'16.531"W	1.80	
9857.00	89.660	0.310	7911.50	1281.91	1278.72	156.76	40°02'54.752"N	104°58'16.540"W	2.00	
9951.00	89.930	0.040	7911.83	1375.89	1372.72	157.04	40°02'55.681"N	104°58'16.537"W	0.41	
10046.00	89.930	359.610	7911.95	1470.86	1467.72	156.75	40°02'56.619"N	104°58'16.540"W	0.45	
10140.00	89.900	1.010	7912.09	1564.84	1561.71	157.26	40°02'57.548"N	104°58'16.534"W	1.49	
10235.00	90.460	1.470	7911.79	1659.84	1656.69	159.32	40°02'58.487"N	104°58'16.507"W	0.76	
10329.00	89.380	1.260	7911.92	1753.84	1750.66	161.56	40°02'59.415"N	104°58'16.479"W	1.17	
10424.00	89.660	1.250	7912.72	1848.83	1845.64	163.64	40°03'00.354"N	104°58'16.452"W	0.29	
10518.00	90.120	2.070	7912.90	1942.83	1939.60	166.36	40°03'01.283"N	104°58'16.417"W	1.00	
10612.00	88.670	0.670	7913.89	2036.82	2033.56	168.61	40°03'02.211"N	104°58'16.388"W	2.14	
10707.00	88.890	0.890	7915.91	2131.80	2128.53	169.90	40°03'03.150"N	104°58'16.371"W	0.33	
10801.00	89.040	0.230	7917.61	2225.77	2222.51	170.82	40°03'04.078"N	104°58'16.359"W	0.72	
10896.00	89.130	0.060	7919.13	2320.74	2317.50	171.06	40°03'05.017"N	104°58'16.356"W	0.20	
10990.00	89.410	0.390	7920.32	2414.72	2411.49	171.43	40°03'05.946"N	104°58'16.352"W	0.46	
11085.00	89.870	0.970	7920.92	2509.71	2506.48	172.56	40°03'06.885"N	104°58'16.337"W	0.78	
11179.00	90.060	1.390	7920.98	2603.71	2600.46	174.49	40°03'07.813"N	104°58'16.312"W	0.49	
11273.00	90.580	2.030	7920.45	2697.70	2694.41	177.30	40°03'08.742"N	104°58'16.276"W	0.88	
11368.00	89.750	0.650	7920.18	2792.70	2789.38	179.52	40°03'09.680"N	104°58'16.247"W	1.70	
11462.00	90.670	0.440	7919.84	2886.69	2883.38	180.41	40°03'10.609"N	104°58'16.236"W	1.00	
11556.00	92.330	0.290	7917.38	2980.64	2977.34	181.01	40°03'11.538"N	104°58'16.228"W	1.77	
11651.00	92.800	359.920	7913.12	3075.53	3072.24	181.19	40°03'12.476"N	104°58'16.226"W	0.63	

REFERENCE WELLPATH IDENTIFICATION			
Operator	KERR-MCGEE OIL & GAS ONSHORE LP	Slot	SLOT#22 RANCHVIEW 28C-11HZ (350'FSL & 2299'FWL, SEC.14)
Area	COLORADO	Well	RANCHVIEW 28C-11HZ
Field	WELD COUNTY (KERR MCGEE)	Wellbore	RANCHVIEW 28C-11HZ AWB
Facility	SEC.14-T1N-R68W		

WELLPATH DATA (178 stations)										
MD [ft]	Inclination [°]	Azimuth [°]	TVD [ft]	Vert Sect [ft]	North [ft]	East [ft]	Latitude	Longitude	DLS [°/100ft]	Comments
11745.00	91.290	358.940	7909.77	3169.42	3166.18	180.25	40°03'13.404"N	104°58'16.238"W	1.91	
11840.00	88.950	359.070	7909.57	3264.33	3261.16	178.60	40°03'14.343"N	104°58'16.259"W	2.47	
11934.00	89.040	359.890	7911.22	3358.27	3355.14	177.75	40°03'15.271"N	104°58'16.270"W	0.88	
12028.00	89.780	0.360	7912.19	3452.25	3449.13	177.95	40°03'16.200"N	104°58'16.268"W	0.93	
12123.00	90.300	0.690	7912.12	3547.24	3544.13	178.82	40°03'17.139"N	104°58'16.256"W	0.65	
12217.00	89.070	1.800	7912.64	3641.23	3638.10	180.87	40°03'18.068"N	104°58'16.230"W	1.76	
12311.00	88.850	1.960	7914.34	3735.21	3732.03	183.95	40°03'18.996"N	104°58'16.190"W	0.29	
12406.00	88.450	0.010	7916.58	3830.18	3826.99	185.58	40°03'19.934"N	104°58'16.169"W	2.09	
12500.00	88.760	0.310	7918.87	3924.13	3920.96	185.85	40°03'20.863"N	104°58'16.166"W	0.46	
12594.00	89.440	0.480	7920.35	4018.11	4014.94	186.49	40°03'21.792"N	104°58'16.158"W	0.75	
12689.00	89.810	0.010	7920.97	4113.09	4109.94	186.90	40°03'22.730"N	104°58'16.152"W	0.63	
12783.00	90.300	0.500	7920.88	4207.08	4203.94	187.32	40°03'23.659"N	104°58'16.147"W	0.74	
12878.00	88.580	359.530	7921.81	4302.04	4298.93	187.34	40°03'24.598"N	104°58'16.147"W	2.08	
12972.00	89.040	0.260	7923.76	4396.00	4392.91	187.17	40°03'25.527"N	104°58'16.149"W	0.92	
13067.00	89.220	0.180	7925.20	4490.97	4487.90	187.54	40°03'26.465"N	104°58'16.144"W	0.21	
13161.00	89.470	0.080	7926.28	4584.94	4581.89	187.75	40°03'27.394"N	104°58'16.141"W	0.29	
13256.00	89.500	0.200	7927.13	4679.92	4676.89	187.98	40°03'28.333"N	104°58'16.138"W	0.13	
13350.00	89.750	0.660	7927.75	4773.91	4770.88	188.69	40°03'29.262"N	104°58'16.129"W	0.56	
13444.00	90.060	0.500	7927.90	4867.90	4864.88	189.64	40°03'30.191"N	104°58'16.117"W	0.37	
13538.00	89.010	0.210	7928.66	4961.88	4958.87	190.22	40°03'31.120"N	104°58'16.110"W	1.16	
13633.00	89.100	359.950	7930.23	5056.85	5053.86	190.35	40°03'32.058"N	104°58'16.108"W	0.29	
13727.00	89.010	0.030	7931.78	5150.81	5147.84	190.34	40°03'32.987"N	104°58'16.108"W	0.13	
13822.00	89.410	358.950	7933.09	5245.76	5242.83	189.49	40°03'33.926"N	104°58'16.119"W	1.21	
13916.00	90.180	358.850	7933.43	5339.67	5336.81	187.69	40°03'34.855"N	104°58'16.142"W	0.83	
14011.00	90.700	358.910	7932.70	5434.59	5431.79	185.83	40°03'35.793"N	104°58'16.166"W	0.55	
14105.00	91.290	358.700	7931.07	5528.48	5525.75	183.87	40°03'36.722"N	104°58'16.191"W	0.67	
14199.00	89.690	359.400	7930.26	5622.41	5619.73	182.31	40°03'37.651"N	104°58'16.211"W	1.86	
14294.00	90.390	359.860	7930.20	5717.37	5714.73	181.70	40°03'38.589"N	104°58'16.219"W	0.88	
14388.00	91.070	359.880	7929.00	5811.33	5808.72	181.48	40°03'39.518"N	104°58'16.222"W	0.72	
14483.00	90.400	0.600	7927.78	5906.30	5903.71	181.88	40°03'40.457"N	104°58'16.217"W	1.04	
14577.00	90.550	0.260	7927.00	6000.29	5997.71	182.59	40°03'41.386"N	104°58'16.208"W	0.40	
14672.00	89.500	359.980	7926.96	6095.27	6092.71	182.79	40°03'42.325"N	104°58'16.205"W	1.14	
14766.00	88.450	359.150	7928.64	6189.21	6186.69	182.07	40°03'43.253"N	104°58'16.214"W	1.42	
14861.00	88.920	359.510	7930.82	6284.13	6281.65	180.96	40°03'44.192"N	104°58'16.229"W	0.62	
14955.00	89.100	359.390	7932.44	6378.07	6375.64	180.06	40°03'45.121"N	104°58'16.240"W	0.23	
15050.00	89.530	358.270	7933.58	6472.97	6470.61	178.12	40°03'46.059"N	104°58'16.265"W	1.26	
15144.00	91.200	358.060	7932.98	6566.83	6564.55	175.11	40°03'46.987"N	104°58'16.304"W	1.79	
15239.00	91.600	357.770	7930.66	6661.64	6659.46	171.66	40°03'47.925"N	104°58'16.348"W	0.52	
15333.00	90.390	358.530	7929.03	6755.48	6753.40	168.62	40°03'48.854"N	104°58'16.387"W	1.52	
15428.00	90.800	358.050	7928.04	6850.34	6848.35	165.79	40°03'49.792"N	104°58'16.424"W	0.66	
15522.00	90.890	357.760	7926.66	6944.17	6942.28	162.35	40°03'50.720"N	104°58'16.468"W	0.32	
15572.00	90.550	357.300	7926.03	6994.06	6992.23	160.20	40°03'51.214"N	104°58'16.496"W	1.14	LAST BHI MWD+IFR SURVEY
15627.00	90.550	357.300	7925.50	7048.92	7047.16	157.61	40°03'51.757"N	104°58'16.529"W	0.00	PROJECTION TO BIT



REFERENCE WELLPATH IDENTIFICATION			
Operator	KERR-MCGEE OIL & GAS ONSHORE LP	Slot	SLOT#22 RANCHVIEW 28C-11HZ (350'FSL & 2299'FWL, SEC.14)
Area	COLORADO	Well	RANCHVIEW 28C-11HZ
Field	WELD COUNTY (KERR MCGEE)	Wellbore	RANCHVIEW 28C-11HZ AWB
Facility	SEC.14-T1N-R68W		

HOLE & CASING SECTIONS - Ref Wellbore: RANCHVIEW 28C-11HZ AWB Ref Wellpath: RANCHVIEW 28C-11HZ AWP									
String/Diameter	Start MD [ft]	End MD [ft]	Interval [ft]	Start TVD [ft]	End TVD [ft]	Start N/S [ft]	Start E/W [ft]	End N/S [ft]	End E/W [ft]
13.5in Open Hole	25.00	1313.00	1288.00	25.00	1312.92	0.00	0.00	-0.26	0.63
9.625in Casing Surface	25.00	1313.00	1288.00	25.00	1312.92	0.00	0.00	-0.26	0.63
8.75in Open Hole	1313.00	8328.00	7015.00	1312.92	7901.04	-0.26	0.63	-249.21	151.01
7in Casing Intermediate	25.00	8318.00	8293.00	25.00	7900.44	0.00	0.00	-259.19	150.72
6.125in Open Hole	8328.00	15627.00	7299.00	7901.04	7925.50	-249.21	151.01	7047.16	157.61

WELLPATH COMPOSITION - Ref Wellbore: RANCHVIEW 28C-11HZ AWB Ref Wellpath: RANCHVIEW 28C-11HZ AWP				
Start MD [ft]	End MD [ft]	Positional Uncertainty Model	Log Name/Comment	Wellbore
25.00	1255.00	Generic gyro - continuous (Standard)	MS GYRO SURVEYS <125-1255>	RANCHVIEW 28C-11HZ AWB
1255.00	8286.00	NaviTrak (MAGCORR,IFR)	BHI NAVITRAK MWD+IFR 8 3/4" <1375-8286>	RANCHVIEW 28C-11HZ AWB
8286.00	15572.00	NaviTrak (MAGCORR,IFR)	BHI NAVITRAK MWD+IFR 6 1/8" <8372-15572>	RANCHVIEW 28C-11HZ AWB
15572.00	15627.00	Blind Drilling (std)	Projection to bit	RANCHVIEW 28C-11HZ AWB

REFERENCE WELLPATH IDENTIFICATION			
Operator	KERR-MCGEE OIL & GAS ONSHORE LP	Slot	SLOT#22 RANCHVIEW 28C-11HZ (350'FSL & 2299'FWL, SEC.14)
Area	COLORADO	Well	RANCHVIEW 28C-11HZ
Field	WELD COUNTY (KERR MCGEE)	Wellbore	RANCHVIEW 28C-11HZ AWB
Facility	SEC.14-T1N-R68W		

WELLPATH COMMENTS				
MD [ft]	Inclination [°]	Azimuth [°]	TVD [ft]	Comment
25.00	0.000	88.490	25.00	TIE ON
125.00	0.670	88.490	125.00	BEGIN GYRO SURVEYS
1255.00	0.520	262.550	1254.93	TIE ONTO GYRO SURVEYS
1375.00	1.760	273.080	1374.90	BEGIN BHI MWD+IFR SURVEYS
8318.00	86.523	1.551	7900.44	7" CASING POINT
15572.00	90.550	357.300	7926.03	LAST BHI MWD+IFR SURVEY
15627.00	90.550	357.300	7925.50	PROJECTION TO BIT