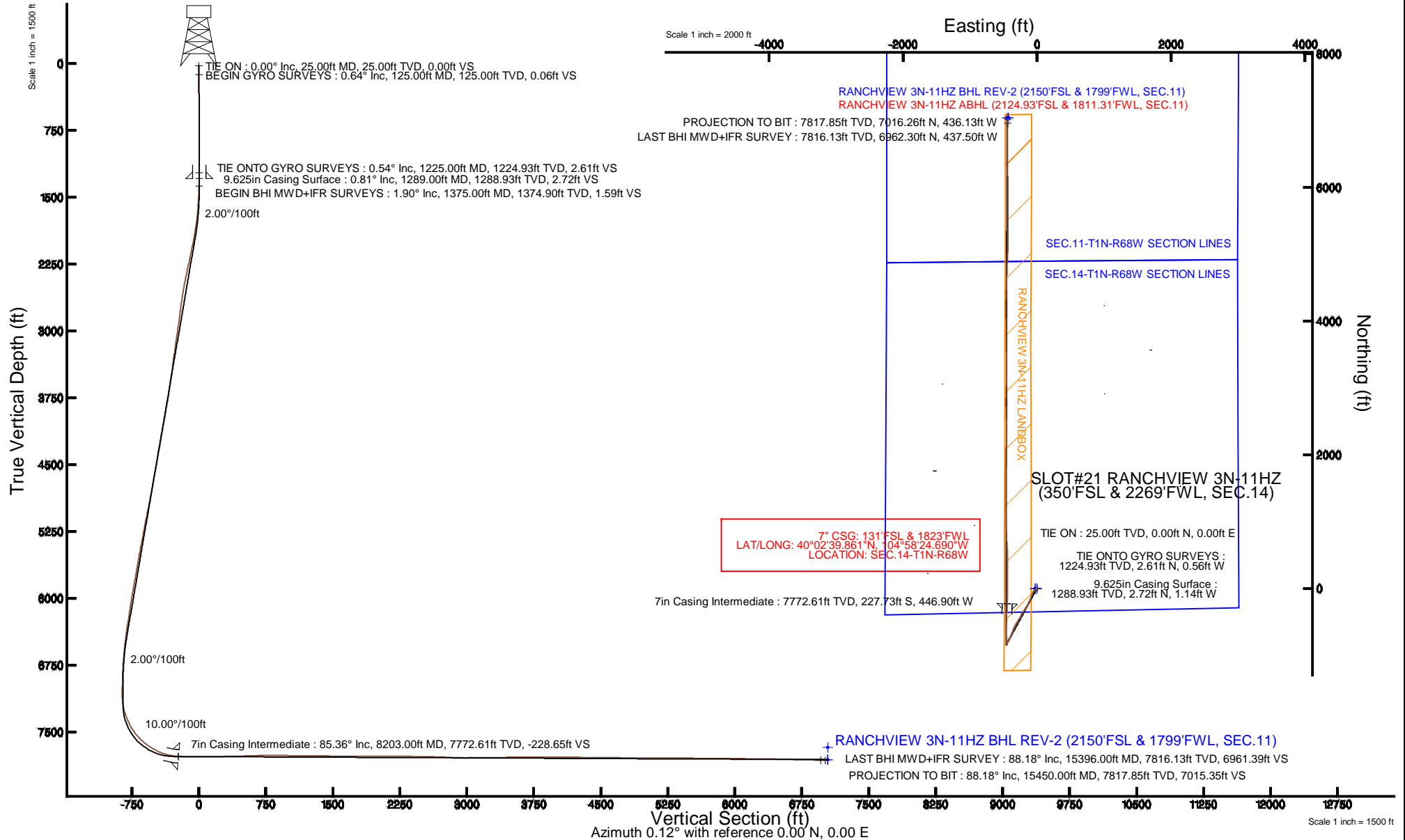


# KERR-MCGEE OIL & GAS ONSHORE LP

Location: COLORADO Slot: SLOT#21 RANCHVIEW 3N-11HZ (350'FSL & 2269'FWL, SEC.14)  
Field: WELD COUNTY (KERR MCGEE) Well: RANCHVIEW 3N-11HZ  
Facility: SEC.14-T1N-R68W Wellbore: RANCHVIEW 3N-11HZ PWB

Plot reference wellpath is RANCHVIEW 3N-11HZ (REV-A.0) PWP

True vertical depths are referenced to H&P 307 (25KB) (RKB)	Grid System: NAD83 / Lambert Colorado SP, Northern Zone (501), US feet
Measured depths are referenced to H&P 307 (25KB) (RKB)	North Reference: True north
H&P 307 (25KB) (RKB) to Mean Sea Level: 5169 feet	Scale: True distance
Mean Sea Level to Mud line (At Slot: SLOT#21 RANCHVIEW 3N-11HZ (350'FSL & 2269'FWL, SEC.14)): 0 feet	Depths are in feet
Coordinates are in feet referenced to Slot	Created by: robale01 on 10/20/2014



REFERENCE WELLPATH IDENTIFICATION			
Operator	KERR-MCGEE OIL & GAS ONSHORE LP	Slot	SLOT#21 RANCHVIEW 3N-11HZ (350'FSL & 2269'FWL, SEC.14)
Area	COLORADO	Well	RANCHVIEW 3N-11HZ
Field	WELD COUNTY (KERR MCGEE)	Wellbore	RANCHVIEW 3N-11HZ AWB
Facility	SEC.14-T1N-R68W		

REPORT SETUP INFORMATION			
Projection System	NAD83 / Lambert Colorado SP, Northern Zone (501), US feet	Software System	WellArchitect® 4.0.0
North Reference	True	User	Robiale01
Scale	0.999963	Report Generated	10/20/2014 at 9:52:02 AM
Convergence at slot	n/a	Database/Source file	WellArchitectDB/RANCHVIEW_3N-11HZ_AWB.xml

WELLPATH LOCATION						
	Local coordinates		Grid coordinates		Geographic coordinates	
	North[ft]	East[ft]	Easting[US ft]	Northing[US ft]	Latitude	Longitude
Slot Location	-1556.84	-2171.24	3147842.46	1259690.74	40°02'42.112"N	104°58'18.944"W
Facility Reference Pt			3150004.17	1261260.61	40°02'57.498"N	104°57'51.026"W
Field Reference Pt			3197771.84	1268891.29	40°04'09.600"N	104°47'36.000"W

WELLPATH DATUM			
Calculation method	Minimum curvature	H&P 307 (25'KB) (RKB) to Facility Vertical Datum	5169.00ft
Horizontal Reference Pt	Slot	H&P 307 (25'KB) (RKB) to Mean Sea Level	5169.00ft
Vertical Reference Pt	H&P 307 (25'KB) (RKB)	H&P 307 (25'KB) (RKB) to Mud Line at Slot (SLOT#21 RANCHVIEW 3N-11HZ (350'FSL & 2269'FWL, SEC.14))	5169.00ft
MD Reference Pt	H&P 307 (25'KB) (RKB)	Section Origin	N 0.00, E 0.00 ft
Field Vertical Reference	Mean Sea Level	Section Azimuth	356.44°

REFERENCE WELLPATH IDENTIFICATION			
Operator	KERR-MCGEE OIL & GAS ONSHORE LP	Slot	SLOT#21 RANCHVIEW 3N-11HZ (350'FSL & 2269'FWL, SEC.14)
Area	COLORADO	Well	RANCHVIEW 3N-11HZ
Field	WELD COUNTY (KERR MCGEE)	Wellbore	RANCHVIEW 3N-11HZ AWP
Facility	SEC.14-T1N-R68W		

WELLPATH DATA (172 stations) † = interpolated/extrapolated station										
MD [ft]	Inclination [°]	Azimuth [°]	TVD [ft]	Vert Sect [ft]	North [ft]	East [ft]	Latitude	Longitude	DLS [°/100ft]	Comments
0.00†	0.000	83.450	0.00	0.00	0.00	0.00	40°02'42.112"N	104°58'18.944"W	0.00	
25.00	0.000	83.450	25.00	0.00	0.00	0.00	40°02'42.112"N	104°58'18.944"W	0.00	TIE ON
125.00	0.640	83.450	125.00	0.03	0.06	0.55	40°02'42.113"N	104°58'18.937"W	0.64	BEGIN GYRO SURVEYS
225.00	1.120	61.410	224.99	0.47	0.60	1.97	40°02'42.118"N	104°58'18.919"W	0.58	
325.00	0.980	59.830	324.97	1.27	1.49	3.57	40°02'42.127"N	104°58'18.898"W	0.14	
425.00	0.420	94.450	424.96	1.60	1.89	4.67	40°02'42.131"N	104°58'18.884"W	0.68	
525.00	0.150	196.040	524.96	1.43	1.74	5.00	40°02'42.129"N	104°58'18.880"W	0.47	
625.00	0.280	312.930	624.96	1.48	1.78	4.78	40°02'42.130"N	104°58'18.882"W	0.37	
725.00	0.520	275.810	724.96	1.73	1.99	4.15	40°02'42.132"N	104°58'18.891"W	0.34	
825.00	0.680	253.320	824.95	1.67	1.87	3.13	40°02'42.130"N	104°58'18.904"W	0.28	
925.00	0.280	315.490	924.95	1.72	1.87	2.39	40°02'42.131"N	104°58'18.913"W	0.60	
1025.00	0.850	299.920	1024.94	2.31	2.42	1.58	40°02'42.136"N	104°58'18.924"W	0.59	
1125.00	0.800	245.110	1124.94	2.47	2.49	0.30	40°02'42.137"N	104°58'18.940"W	0.76	
1225.00	0.540	330.280	1224.93	2.64	2.61	-0.56	40°02'42.138"N	104°58'18.951"W	0.93	TIE ONTO GYRO SURVEYS
1375.00	1.900	229.120	1374.90	1.76	1.59	-2.79	40°02'42.128"N	104°58'18.980"W	1.38	BEGIN BHI MWD+IFR SURVEYS
1467.00	4.400	227.370	1466.76	-1.39	-1.79	-6.54	40°02'42.094"N	104°58'19.028"W	2.72	
1558.00	6.590	239.200	1557.34	-5.98	-6.83	-13.60	40°02'42.044"N	104°58'19.119"W	2.70	
1650.00	8.430	235.970	1648.54	-11.81	-13.31	-23.72	40°02'41.980"N	104°58'19.249"W	2.05	
1742.00	9.590	227.830	1739.41	-20.02	-22.23	-34.99	40°02'41.892"N	104°58'19.394"W	1.87	
1834.00	10.430	216.340	1830.02	-31.19	-34.08	-45.61	40°02'41.775"N	104°58'19.530"W	2.35	
1926.00	11.740	210.820	1920.30	-45.30	-48.83	-55.34	40°02'41.629"N	104°58'19.656"W	1.83	
2018.00	11.860	204.100	2010.36	-61.40	-65.50	-63.99	40°02'41.465"N	104°58'19.767"W	1.50	
2110.00	13.370	201.550	2100.14	-79.41	-84.02	-71.76	40°02'41.282"N	104°58'19.867"W	1.75	
2201.00	12.580	201.820	2188.81	-97.89	-103.01	-79.31	40°02'41.094"N	104°58'19.964"W	0.87	
2294.00	13.040	200.750	2279.50	-116.60	-122.22	-86.79	40°02'40.904"N	104°58'20.060"W	0.56	
2387.00	12.230	202.370	2370.25	-135.03	-141.14	-94.26	40°02'40.717"N	104°58'20.156"W	0.95	
2573.00	10.440	201.000	2552.61	-168.07	-175.10	-107.80	40°02'40.382"N	104°58'20.330"W	0.97	
2760.00	8.250	200.480	2737.12	-195.74	-203.49	-118.56	40°02'40.101"N	104°58'20.468"W	1.17	
2851.00	8.320	208.190	2827.17	-207.30	-215.41	-123.96	40°02'39.983"N	104°58'20.538"W	1.22	
2944.00	8.990	211.950	2919.11	-218.94	-227.50	-130.98	40°02'39.864"N	104°58'20.628"W	0.94	
3037.00	9.690	205.770	3010.88	-231.68	-240.72	-138.23	40°02'39.733"N	104°58'20.721"W	1.31	
3130.00	9.280	203.640	3102.61	-245.17	-254.64	-144.64	40°02'39.596"N	104°58'20.804"W	0.58	
3226.00	7.770	204.740	3197.55	-257.77	-267.62	-150.46	40°02'39.467"N	104°58'20.879"W	1.58	
3320.00	9.310	210.960	3290.50	-269.63	-279.91	-157.03	40°02'39.346"N	104°58'20.963"W	1.91	
3415.00	10.050	218.140	3384.15	-282.15	-293.02	-166.10	40°02'39.216"N	104°58'21.080"W	1.49	
3509.00	9.510	217.170	3476.79	-294.16	-305.66	-175.86	40°02'39.091"N	104°58'21.205"W	0.60	
3603.00	10.350	218.490	3569.38	-306.32	-318.46	-185.81	40°02'38.965"N	104°58'21.333"W	0.93	
3697.00	10.340	218.580	3661.85	-318.84	-331.66	-196.33	40°02'38.834"N	104°58'21.468"W	0.02	
3791.00	11.600	215.050	3754.13	-332.49	-346.00	-207.01	40°02'38.693"N	104°58'21.606"W	1.52	
3886.00	11.870	211.320	3847.15	-347.97	-362.16	-217.58	40°02'38.533"N	104°58'21.742"W	0.85	
3980.00	10.710	208.800	3939.33	-363.28	-378.08	-226.81	40°02'38.376"N	104°58'21.860"W	1.34	
4075.00	11.420	204.860	4032.56	-379.00	-394.34	-235.02	40°02'38.215"N	104°58'21.966"W	1.09	
4169.00	10.160	199.180	4124.90	-394.84	-410.62	-241.66	40°02'38.054"N	104°58'22.051"W	1.75	
4263.00	10.010	207.040	4217.45	-409.52	-425.73	-248.09	40°02'37.905"N	104°58'22.134"W	1.47	
4357.00	11.590	213.070	4309.79	-424.13	-440.92	-256.96	40°02'37.755"N	104°58'22.248"W	2.06	

REFERENCE WELLPATH IDENTIFICATION				
Operator	KERR-MCGEE OIL & GAS ONSHORE LP		Slot	SLOT#21 RANCHVIEW 3N-11HZ (350'FSL & 2269'FWL, SEC.14)
Area	COLORADO		Well	RANCHVIEW 3N-11HZ
Field	WELD COUNTY (KERR MCGEE)		Wellbore	RANCHVIEW 3N-11HZ AWB
Facility	SEC.14-T1N-R68W			

WELLPATH DATA (172 stations)										
MD [ft]	Inclination [°]	Azimuth [°]	TVD [ft]	Vert Sect [ft]	North [ft]	East [ft]	Latitude	Longitude	DLS [°/100ft]	Comments
4452.00	12.470	211.520	4402.70	-440.18	-457.66	-267.53	40°02'37.589"N	104°58'22.384"W	0.99	
4546.00	11.670	212.070	4494.62	-456.21	-474.37	-277.88	40°02'37.424"N	104°58'22.517"W	0.86	
4640.00	13.070	209.260	4586.44	-472.87	-491.70	-288.13	40°02'37.253"N	104°58'22.649"W	1.62	
4735.00	11.720	209.760	4679.22	-489.97	-509.44	-298.17	40°02'37.078"N	104°58'22.778"W	1.43	
4829.00	11.350	215.180	4771.33	-505.16	-525.29	-308.24	40°02'36.921"N	104°58'22.907"W	1.22	
4924.00	12.780	209.250	4864.23	-521.28	-542.10	-318.76	40°02'36.755"N	104°58'23.043"W	1.99	
5018.00	12.810	207.940	4955.90	-538.91	-560.38	-328.72	40°02'36.574"N	104°58'23.171"W	0.31	
5112.00	12.500	205.790	5047.61	-556.66	-578.75	-338.03	40°02'36.393"N	104°58'23.290"W	0.60	
5207.00	11.880	205.290	5140.47	-574.19	-596.84	-346.68	40°02'36.214"N	104°58'23.402"W	0.66	
5301.00	11.440	202.290	5232.53	-591.05	-614.22	-354.35	40°02'36.042"N	104°58'23.500"W	0.80	
5395.00	11.290	198.210	5324.69	-607.99	-631.58	-360.76	40°02'35.870"N	104°58'23.583"W	0.87	
5489.00	11.660	201.350	5416.81	-625.15	-649.17	-367.09	40°02'35.697"N	104°58'23.664"W	0.77	
5583.00	10.950	197.790	5508.99	-642.08	-666.52	-373.28	40°02'35.525"N	104°58'23.744"W	1.06	
5773.00	10.190	201.360	5695.76	-674.13	-699.36	-384.91	40°02'35.201"N	104°58'23.893"W	0.53	
5867.00	11.450	208.820	5788.10	-689.55	-715.28	-392.44	40°02'35.043"N	104°58'23.990"W	2.00	
5961.00	12.060	210.700	5880.13	-705.55	-731.89	-401.95	40°02'34.879"N	104°58'24.112"W	0.77	
6149.00	9.450	205.550	6064.81	-735.27	-762.71	-418.64	40°02'34.575"N	104°58'24.327"W	1.48	
6244.00	9.860	210.640	6158.47	-748.81	-776.75	-426.15	40°02'34.436"N	104°58'24.423"W	1.00	
6338.00	10.270	206.720	6251.02	-762.71	-791.16	-434.02	40°02'34.294"N	104°58'24.524"W	0.85	
6433.00	8.770	203.540	6344.71	-776.47	-805.36	-440.72	40°02'34.153"N	104°58'24.611"W	1.67	
6528.00	7.630	199.140	6438.74	-788.73	-817.96	-445.68	40°02'34.029"N	104°58'24.674"W	1.37	
6622.00	6.310	195.280	6532.04	-799.38	-828.84	-449.09	40°02'33.921"N	104°58'24.718"W	1.49	
6717.00	5.400	186.930	6626.55	-808.72	-838.31	-451.00	40°02'33.828"N	104°58'24.743"W	1.31	
6811.00	4.410	183.900	6720.20	-816.65	-846.31	-451.78	40°02'33.749"N	104°58'24.753"W	1.09	
6906.00	2.830	207.300	6815.01	-822.29	-852.04	-453.11	40°02'33.692"N	104°58'24.770"W	2.24	
7000.00	1.240	210.190	6908.95	-825.12	-854.98	-454.68	40°02'33.663"N	104°58'24.790"W	1.69	
7095.00	0.930	223.470	7003.94	-826.50	-856.43	-455.73	40°02'33.649"N	104°58'24.804"W	0.42	
7189.00	0.640	301.710	7097.93	-826.72	-856.71	-456.70	40°02'33.646"N	104°58'24.816"W	1.08	
7284.00	8.630	354.520	7192.55	-819.28	-849.32	-457.83	40°02'33.719"N	104°58'24.831"W	8.69	
7331.00	13.330	358.190	7238.68	-810.33	-840.39	-458.34	40°02'33.807"N	104°58'24.837"W	10.11	
7378.00	16.940	358.730	7284.04	-798.07	-828.12	-458.67	40°02'33.928"N	104°58'24.841"W	7.69	
7425.00	20.960	0.330	7328.49	-782.84	-812.86	-458.77	40°02'34.079"N	104°58'24.843"W	8.62	
7472.00	24.050	1.870	7371.90	-764.91	-794.88	-458.41	40°02'34.257"N	104°58'24.838"W	6.69	
7519.00	27.400	1.890	7414.24	-744.61	-774.50	-457.74	40°02'34.458"N	104°58'24.829"W	7.13	
7567.00	31.500	358.790	7456.03	-721.07	-750.91	-457.64	40°02'34.691"N	104°58'24.828"W	9.11	
7614.00	35.310	358.200	7495.26	-695.22	-725.05	-458.32	40°02'34.947"N	104°58'24.837"W	8.14	
7661.00	38.950	358.410	7532.72	-666.86	-696.69	-459.16	40°02'35.227"N	104°58'24.848"W	7.75	
7708.00	43.910	358.400	7567.95	-635.79	-665.61	-460.03	40°02'35.534"N	104°58'24.859"W	10.55	
7756.00	48.810	1.110	7601.07	-601.13	-630.89	-460.14	40°02'35.877"N	104°58'24.860"W	10.99	
7803.00	52.320	1.280	7630.92	-564.96	-594.61	-459.38	40°02'36.236"N	104°58'24.851"W	7.47	
7850.00	55.500	0.890	7658.60	-527.11	-556.64	-458.67	40°02'36.611"N	104°58'24.841"W	6.80	
7897.00	58.710	1.500	7684.12	-487.79	-517.19	-457.84	40°02'37.001"N	104°58'24.831"W	6.92	
7945.00	62.640	2.560	7707.63	-446.15	-475.38	-456.35	40°02'37.414"N	104°58'24.812"W	8.41	
7992.00	67.440	1.680	7727.46	-403.76	-432.81	-454.78	40°02'37.835"N	104°58'24.792"W	10.35	
8039.00	72.900	1.790	7743.39	-359.75	-388.63	-453.44	40°02'38.271"N	104°58'24.774"W	11.62	

REFERENCE WELLPATH IDENTIFICATION			
Operator	KERR-MCGEE OIL & GAS ONSHORE LP	Slot	SLOT#21 RANCHVIEW 3N-11HZ (350'FSL & 2269'FWL, SEC.14)
Area	COLORADO	Well	RANCHVIEW 3N-11HZ
Field	WELD COUNTY (KERR MCGEE)	Wellbore	RANCHVIEW 3N-11HZ AWB
Facility	SEC.14-T1N-R68W		

WELLPATH DATA (172 stations) † = interpolated/extrapolated station										
MD [ft]	Inclination [°]	Azimuth [°]	TVD [ft]	Vert Sect [ft]	North [ft]	East [ft]	Latitude	Longitude	DLS [°/100ft]	Comments
8086.00	77.400	2.500	7755.44	-314.56	-343.25	-451.74	40°02'38.720"N	104°58'24.752"W	9.69	
8133.00	80.510	2.990	7764.44	-268.71	-297.17	-449.53	40°02'39.175"N	104°58'24.724"W	6.70	
8176.00	84.210	1.890	7770.16	-226.34	-254.60	-447.72	40°02'39.596"N	104°58'24.701"W	8.97	
8203.00†	85.360	1.604	7772.61	-199.56	-227.73	-446.90	40°02'39.861"N	104°58'24.690"W	4.39	7" CASING POINT
8288.00	88.980	0.710	7776.81	-114.97	-142.86	-445.18	40°02'40.700"N	104°58'24.668"W	4.39	
8380.00	89.500	1.660	7778.03	-23.29	-50.89	-443.28	40°02'41.609"N	104°58'24.644"W	1.18	
8471.00	90.120	1.070	7778.33	67.37	40.08	-441.11	40°02'42.508"N	104°58'24.616"W	0.94	
8563.00	90.860	0.300	7777.54	159.11	132.07	-440.01	40°02'43.417"N	104°58'24.602"W	1.16	
8655.00	91.750	359.380	7775.45	250.93	224.04	-440.27	40°02'44.326"N	104°58'24.605"W	1.39	
8747.00	91.080	1.100	7773.17	342.69	316.01	-439.89	40°02'45.235"N	104°58'24.600"W	2.01	
8839.00	91.320	358.820	7771.25	434.49	407.98	-439.95	40°02'46.144"N	104°58'24.601"W	2.49	
8931.00	91.630	358.150	7768.88	526.40	499.92	-442.38	40°02'47.052"N	104°58'24.632"W	0.80	
9024.00	91.780	357.300	7766.11	619.34	592.80	-446.07	40°02'47.970"N	104°58'24.680"W	0.93	
9117.00	92.280	356.990	7762.82	712.27	685.63	-450.70	40°02'48.888"N	104°58'24.739"W	0.63	
9210.00	90.580	357.580	7760.50	805.23	778.49	-455.10	40°02'49.805"N	104°58'24.796"W	1.93	
9303.00	89.070	357.560	7760.78	898.21	871.41	-459.05	40°02'50.723"N	104°58'24.847"W	1.62	
9397.00	88.300	358.290	7762.94	992.15	965.32	-462.45	40°02'51.651"N	104°58'24.890"W	1.13	
9488.00	88.020	359.630	7765.86	1083.01	1056.26	-464.10	40°02'52.550"N	104°58'24.912"W	1.50	
9582.00	89.560	0.650	7767.84	1176.79	1150.23	-463.87	40°02'53.479"N	104°58'24.909"W	1.96	
9675.00	90.430	0.400	7767.85	1269.56	1243.22	-463.02	40°02'54.398"N	104°58'24.898"W	0.97	
9767.00	90.460	359.510	7767.14	1361.38	1335.22	-463.09	40°02'55.307"N	104°58'24.899"W	0.97	
9862.00	88.490	0.070	7768.01	1456.21	1430.21	-463.44	40°02'56.246"N	104°58'24.903"W	2.16	
9957.00	88.580	0.300	7770.44	1550.97	1525.18	-463.13	40°02'57.184"N	104°58'24.899"W	0.26	
10051.00	89.250	0.650	7772.22	1644.72	1619.16	-462.35	40°02'58.113"N	104°58'24.889"W	0.80	
10146.00	90.520	1.200	7772.41	1739.43	1714.14	-460.82	40°02'59.052"N	104°58'24.870"W	1.46	
10240.00	89.870	1.090	7772.09	1833.11	1808.12	-458.94	40°02'59.980"N	104°58'24.846"W	0.70	
10334.00	89.410	0.400	7772.68	1926.85	1902.11	-457.72	40°03'00.909"N	104°58'24.830"W	0.88	
10429.00	90.030	1.760	7773.14	2021.53	1997.09	-455.93	40°03'01.848"N	104°58'24.807"W	1.57	
10523.00	90.980	0.860	7772.31	2115.19	2091.06	-453.78	40°03'02.776"N	104°58'24.779"W	1.39	
10618.00	90.490	0.080	7771.10	2209.94	2186.05	-453.00	40°03'03.715"N	104°58'24.769"W	0.97	
10712.00	89.160	359.240	7771.38	2303.79	2280.05	-453.56	40°03'04.644"N	104°58'24.776"W	1.67	
10807.00	88.390	358.710	7773.41	2398.68	2375.01	-455.26	40°03'05.582"N	104°58'24.798"W	0.98	
10901.00	89.100	358.860	7775.47	2492.58	2468.96	-457.25	40°03'06.511"N	104°58'24.824"W	0.77	
10996.00	88.980	357.760	7777.06	2587.51	2563.91	-460.05	40°03'07.449"N	104°58'24.860"W	1.16	
11090.00	87.960	358.060	7779.57	2681.44	2657.81	-463.48	40°03'08.377"N	104°58'24.904"W	1.13	
11185.00	87.600	359.030	7783.25	2776.31	2752.71	-465.89	40°03'09.315"N	104°58'24.935"W	1.09	
11279.00	88.330	1.590	7786.59	2870.03	2846.64	-465.38	40°03'10.243"N	104°58'24.929"W	2.83	
11374.00	89.190	2.240	7788.65	2964.57	2941.56	-462.21	40°03'11.181"N	104°58'24.888"W	1.13	
11468.00	91.010	2.030	7788.48	3058.10	3035.49	-458.70	40°03'12.109"N	104°58'24.843"W	1.95	
11562.00	91.070	0.890	7786.78	3151.73	3129.44	-456.31	40°03'13.038"N	104°58'24.812"W	1.21	
11657.00	89.750	359.770	7786.10	3246.50	3224.44	-455.76	40°03'13.977"N	104°58'24.805"W	1.82	
11751.00	90.610	359.950	7785.80	3340.33	3318.43	-455.99	40°03'14.906"N	104°58'24.808"W	0.93	
11845.00	91.040	359.400	7784.45	3434.17	3412.42	-456.53	40°03'15.834"N	104°58'24.815"W	0.74	
11940.00	90.830	358.960	7782.90	3529.05	3507.40	-457.88	40°03'16.773"N	104°58'24.832"W	0.51	
12035.00	89.840	357.930	7782.34	3623.99	3602.36	-460.46	40°03'17.711"N	104°58'24.866"W	1.50	

REFERENCE WELLPATH IDENTIFICATION				
Operator	KERR-MCGEE OIL & GAS ONSHORE LP		Slot	SLOT#21 RANCHVIEW 3N-11HZ (350'FSL & 2269'FWL, SEC.14)
Area	COLORADO		Well	RANCHVIEW 3N-11HZ
Field	WELD COUNTY (KERR MCGEE)		Wellbore	RANCHVIEW 3N-11HZ AWB
Facility	SEC.14-T1N-R68W			

WELLPATH DATA (172 stations)										
MD [ft]	Inclination [°]	Azimuth [°]	TVD [ft]	Vert Sect [ft]	North [ft]	East [ft]	Latitude	Longitude	DLS [°/100ft]	Comments
12129.00	89.560	358.700	7782.84	3717.94	3696.32	-463.23	40°03'18.640"N	104°58'24.901"W	0.87	
12223.00	89.720	0.020	7783.43	3811.81	3790.31	-464.28	40°03'19.569"N	104°58'24.915"W	1.41	
12318.00	90.550	0.040	7783.20	3906.62	3885.31	-464.23	40°03'20.507"N	104°58'24.914"W	0.87	
12412.00	90.460	359.560	7782.37	4000.46	3979.30	-464.56	40°03'21.436"N	104°58'24.918"W	0.52	
12506.00	89.840	358.960	7782.13	4094.34	4073.29	-465.77	40°03'22.365"N	104°58'24.934"W	0.92	
12601.00	89.840	359.820	7782.39	4189.22	4168.29	-466.78	40°03'23.304"N	104°58'24.947"W	0.91	
12695.00	88.700	0.670	7783.59	4283.00	4262.28	-466.38	40°03'24.233"N	104°58'24.942"W	1.51	
12789.00	88.670	2.250	7785.75	4376.61	4356.22	-463.98	40°03'25.161"N	104°58'24.911"W	1.68	
12884.00	90.240	2.480	7786.65	4471.10	4451.13	-460.06	40°03'26.099"N	104°58'24.861"W	1.67	
12978.00	88.730	1.760	7787.50	4564.63	4545.06	-456.59	40°03'27.027"N	104°58'24.816"W	1.78	
13072.00	90.120	1.980	7788.44	4658.20	4639.00	-453.52	40°03'27.956"N	104°58'24.776"W	1.50	
13167.00	89.410	1.300	7788.83	4752.81	4733.96	-450.80	40°03'28.894"N	104°58'24.742"W	1.03	
13262.00	89.810	3.060	7789.48	4847.33	4828.89	-447.19	40°03'29.832"N	104°58'24.695"W	1.90	
13356.00	89.750	2.380	7789.84	4940.76	4922.78	-442.73	40°03'30.760"N	104°58'24.638"W	0.73	
13450.00	90.460	2.270	7789.67	5034.27	5016.70	-438.91	40°03'31.688"N	104°58'24.589"W	0.76	
13544.00	88.880	0.900	7790.21	5127.88	5110.66	-436.31	40°03'32.617"N	104°58'24.555"W	2.22	
13639.00	89.720	0.380	7791.37	5222.62	5205.64	-435.25	40°03'33.555"N	104°58'24.542"W	1.04	
13733.00	89.470	359.920	7792.03	5316.42	5299.64	-435.01	40°03'34.484"N	104°58'24.539"W	0.56	
13827.00	89.750	0.100	7792.67	5410.23	5393.64	-434.99	40°03'35.413"N	104°58'24.538"W	0.35	
13922.00	89.530	359.960	7793.27	5505.05	5488.64	-434.94	40°03'36.352"N	104°58'24.538"W	0.27	
14017.00	89.380	0.280	7794.17	5599.85	5583.63	-434.74	40°03'37.291"N	104°58'24.535"W	0.37	
14111.00	89.070	0.280	7795.44	5693.63	5677.62	-434.28	40°03'38.220"N	104°58'24.529"W	0.33	
14206.00	88.850	0.220	7797.17	5788.40	5772.60	-433.87	40°03'39.158"N	104°58'24.524"W	0.24	
14300.00	89.840	0.180	7798.24	5882.19	5866.60	-433.54	40°03'40.087"N	104°58'24.520"W	1.05	
14394.00	90.120	359.400	7798.28	5976.03	5960.60	-433.88	40°03'41.016"N	104°58'24.524"W	0.88	
14488.00	89.780	358.010	7798.36	6069.96	6054.57	-436.01	40°03'41.945"N	104°58'24.552"W	1.52	
14583.00	89.290	359.030	7799.13	6164.89	6149.53	-438.46	40°03'42.883"N	104°58'24.583"W	1.19	
14677.00	89.290	0.170	7800.29	6258.74	6243.52	-439.12	40°03'43.812"N	104°58'24.592"W	1.21	
14771.00	89.380	359.380	7801.38	6352.57	6337.51	-439.49	40°03'44.741"N	104°58'24.596"W	0.85	
14866.00	88.670	359.450	7803.00	6447.43	6432.49	-440.46	40°03'45.679"N	104°58'24.609"W	0.75	
14960.00	88.540	0.020	7805.29	6541.25	6526.47	-440.89	40°03'46.608"N	104°58'24.615"W	0.62	
15055.00	88.580	359.800	7807.68	6636.04	6621.43	-441.04	40°03'47.547"N	104°58'24.616"W	0.24	
15149.00	88.820	0.570	7809.81	6729.82	6715.41	-440.74	40°03'48.475"N	104°58'24.613"W	0.86	
15244.00	88.580	0.600	7811.96	6824.54	6810.38	-439.77	40°03'49.414"N	104°58'24.600"W	0.25	
15338.00	88.430	0.790	7814.42	6918.25	6904.34	-438.63	40°03'50.342"N	104°58'24.585"W	0.26	
15396.00	88.180	1.450	7816.13	6976.03	6962.30	-437.50	40°03'50.915"N	104°58'24.571"W	1.22	LAST BHI MWD+IFR SURVEY
15450.00	88.180	1.450	7817.85	7029.80	7016.26	-436.13	40°03'51.448"N	104°58'24.553"W	0.00	PROJECTION TO BIT



REFERENCE WELLPATH IDENTIFICATION			
Operator	KERR-MCGEE OIL & GAS ONSHORE LP	Slot	SLOT#21 RANCHVIEW 3N-11HZ (350'FSL & 2269'FWL, SEC.14)
Area	COLORADO	Well	RANCHVIEW 3N-11HZ
Field	WELD COUNTY (KERR MCGEE)	Wellbore	RANCHVIEW 3N-11HZ AWB
Facility	SEC.14-T1N-R68W		

HOLE & CASING SECTIONS - Ref Wellbore: RANCHVIEW 3N-11HZ AWB Ref Wellpath: RANCHVIEW 3N-11HZ AWP									
String/Diameter	Start MD [ft]	End MD [ft]	Interval [ft]	Start TVD [ft]	End TVD [ft]	Start N/S [ft]	Start E/W [ft]	End N/S [ft]	End E/W [ft]
13.5in Open Hole	25.00	1289.00	1264.00	25.00	1288.93	0.00	0.00	2.72	-1.14
9.625in Casing Surface	25.00	1289.00	1264.00	25.00	1288.93	0.00	0.00	2.72	-1.14
8.75in Open Hole	1289.00	8225.00	6936.00	1288.93	7774.21	2.72	-1.14	-205.79	-446.33
7in Casing Intermediate	25.00	8203.00	8178.00	25.00	7772.61	0.00	0.00	-227.73	-446.90
6.125in Open Hole	8225.00	15450.00	7225.00	7774.21	7817.85	-205.79	-446.33	7016.26	-436.13

WELLPATH COMPOSITION - Ref Wellbore: RANCHVIEW 3N-11HZ AWB Ref Wellpath: RANCHVIEW 3N-11HZ AWP				
Start MD [ft]	End MD [ft]	Positional Uncertainty Model	Log Name/Comment	Wellbore
25.00	1225.00	Generic gyro - continuous (Standard)	MS GYRO SURVEYS <125-1225>	RANCHVIEW 3N-11HZ AWB
1225.00	8380.00	NaviTrak (MAGCORR,IFR)	BHI NAVITRAK MWD+IFR 8 3/4" <1375-8380>	RANCHVIEW 3N-11HZ AWB
8380.00	15396.00	NaviTrak (MAGCORR,IFR)	BHI NAVITRAK MWD+IFR 6 1/8" <8471-15396>	RANCHVIEW 3N-11HZ AWB
15396.00	15450.00	Blind Drilling (std)	Projection to bit	RANCHVIEW 3N-11HZ AWB

REFERENCE WELLPATH IDENTIFICATION				
Operator	KERR-MCGEE OIL & GAS ONSHORE LP	Slot	SLOT#21 RANCHVIEW 3N-11HZ (350'FSL & 2269'FWL, SEC.14)	
Area	COLORADO	Well	RANCHVIEW 3N-11HZ	
Field	WELD COUNTY (KERR MCGEE)	Wellbore	RANCHVIEW 3N-11HZ AWB	
Facility	SEC.14-T1N-R68W			

WELLPATH COMMENTS				
MD [ft]	Inclination [°]	Azimuth [°]	TVD [ft]	Comment
25.00	0.000	83.450	25.00	TIE ON
125.00	0.640	83.450	125.00	BEGIN GYRO SURVEYS
1225.00	0.540	330.280	1224.93	TIE ONTO GYRO SURVEYS
1375.00	1.900	229.120	1374.90	BEGIN BHI MWD+IFR SURVEYS
8203.00	85.360	1.604	7772.61	7" CASING POINT
15396.00	88.180	1.450	7816.13	LAST BHI MWD+IFR SURVEY
15450.00	88.180	1.450	7817.85	PROJECTION TO BIT