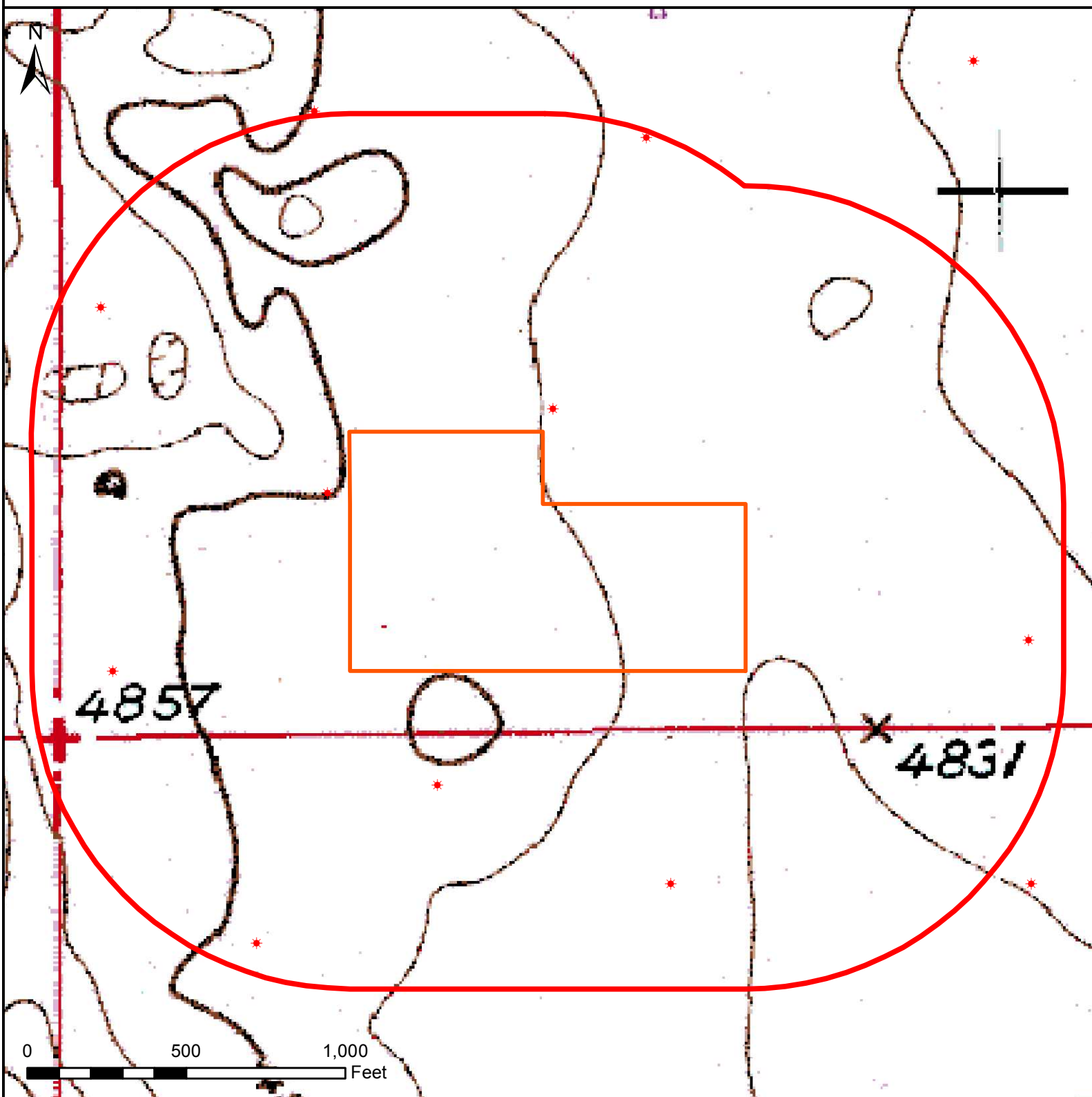


HYDROLOGY MAP




SKIM STATE 4N-21HZ



Nearest Surface Water Feature

None
Loc Elev: 4847'

Legend

-  1000' buffer
-  Well pad (proposed)
-  Existing oil/gas well (COGCC)

All measurements are made from
edge of disturbed area.



Date created: 11/11/2014
Created by: APC Regulatory GIS
Scale: 1:5,000
Projection: NAD83 UTM 13N