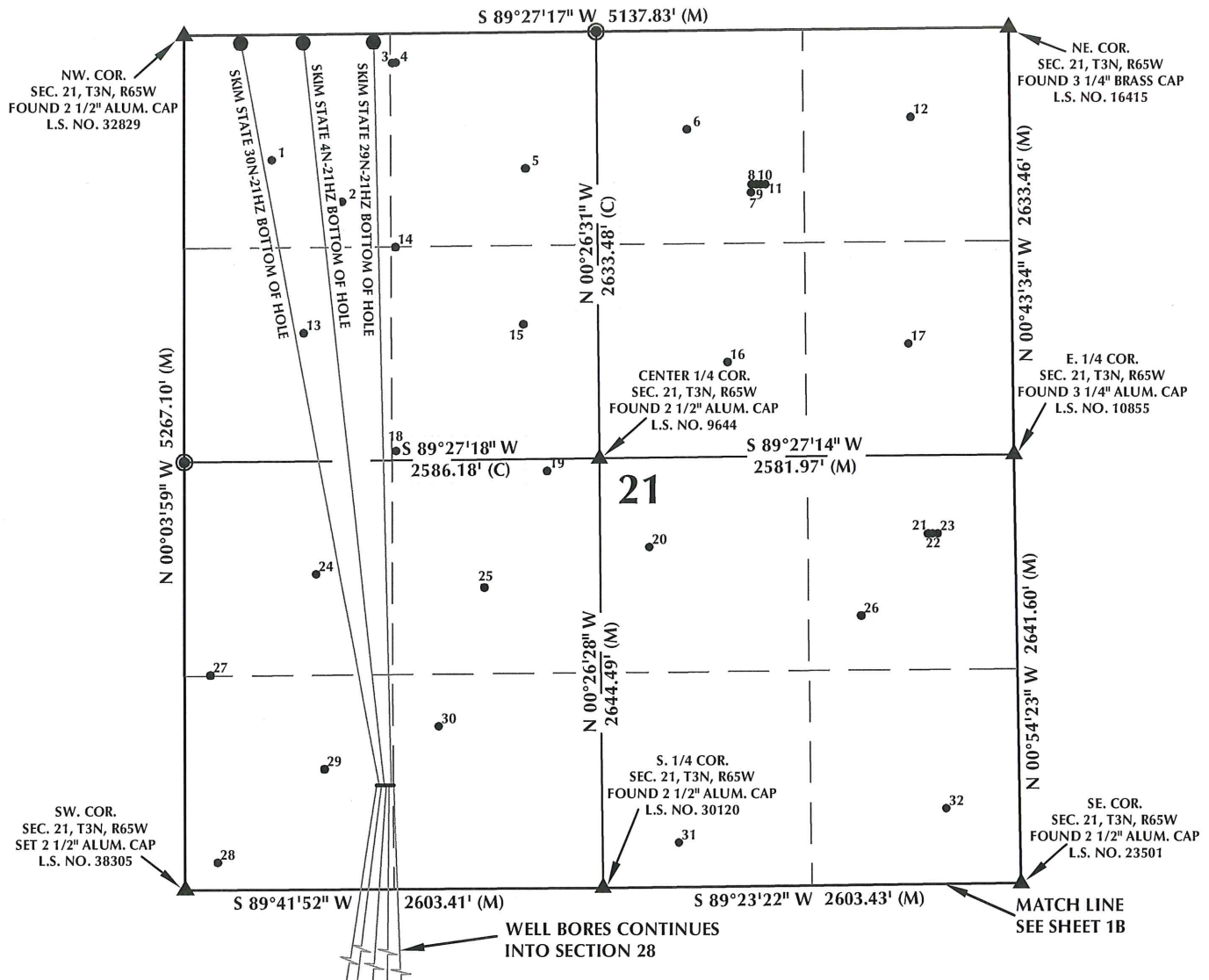


# MULTI-WELL PLAN SECTION 21 T3N, R65W



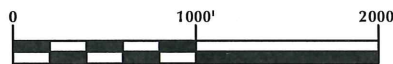
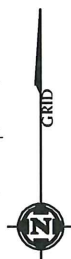
## WELL NOTES:

SKIM 34C-28HZ  
SURFACE: 639' FSL, 1196' FWL  
BOTTOM HOLE: 50' FSL, 213' FWL  
SKIM STATE 30N-21HZ  
SURFACE: 639' FSL, 1211' FWL  
BOTTOM HOLE: 50' FNL, 352' FWL  
SKIM 34N-28HZ  
SURFACE: 639' FSL, 1226' FWL  
BOTTOM HOLE: 50' FSL, 565' FWL  
SKIM STATE 4N-21HZ  
SURFACE: 639' FSL, 1241' FWL  
BOTTOM HOLE: 50' FNL, 742' FWL  
SKIM 13N-28HZ  
SURFACE: 639' FSL, 1256' FWL  
BOTTOM HOLE: 50' FSL, 792' FWL

SKIM 35N-28HZ  
SURFACE: 638' FSL, 1271' FWL  
BOTTOM HOLE: 50' FSL, 1169' FWL  
SKIM STATE 29N-21HZ  
SURFACE: 638' FSL, 1286' FWL  
BOTTOM HOLE: 50' FNL, 1182' FWL  
SKIM 35C-28HZ  
SURFACE: 638' FSL, 1301' FWL  
BOTTOM HOLE: 50' FSL, 1550' FWL

## NOTES:

- ▲ INDICATES FOUND SECTION CORNER
- INDICATES CALCULATED CORNER
- INDICATES EXISTING WELL LOCATION
- BASIS OF BEARING DERIVED FROM COLORADO COORDINATE SYSTEM 1983 NORTH ZONE UNLESS OTHERWISE NOTED.
- ALL MEASURED DISTANCES ARE GRID.
- COMBINED SCALE FACTOR: .99972948
- WELL FOOTAGES ARE MEASURED AT RIGHT ANGLES TO THE SECTION LINES.



SCALE: 1" = 1000'

## WELL PAD - SKIM STATE 4N-21HZ

MULTI-WELL PLAN  
SKIM 34C-28HZ, SKIM STATE 30N-21HZ,  
SKIM 34N-28HZ, SKIM STATE 4N-21HZ,  
SKIM 13N-28HZ, SKIM 35N-28HZ,  
SKIM STATE 29N-21HZ & SKIM 35C-28HZ  
LOCATED IN SECTIONS 21 & 28  
T3N, R65W, 6TH P.M.  
WELD COUNTY, COLORADO

**Kerr-McGee Oil &  
Gas Onshore L.P.**  
1099 18th Street  
Denver, Colorado 80202



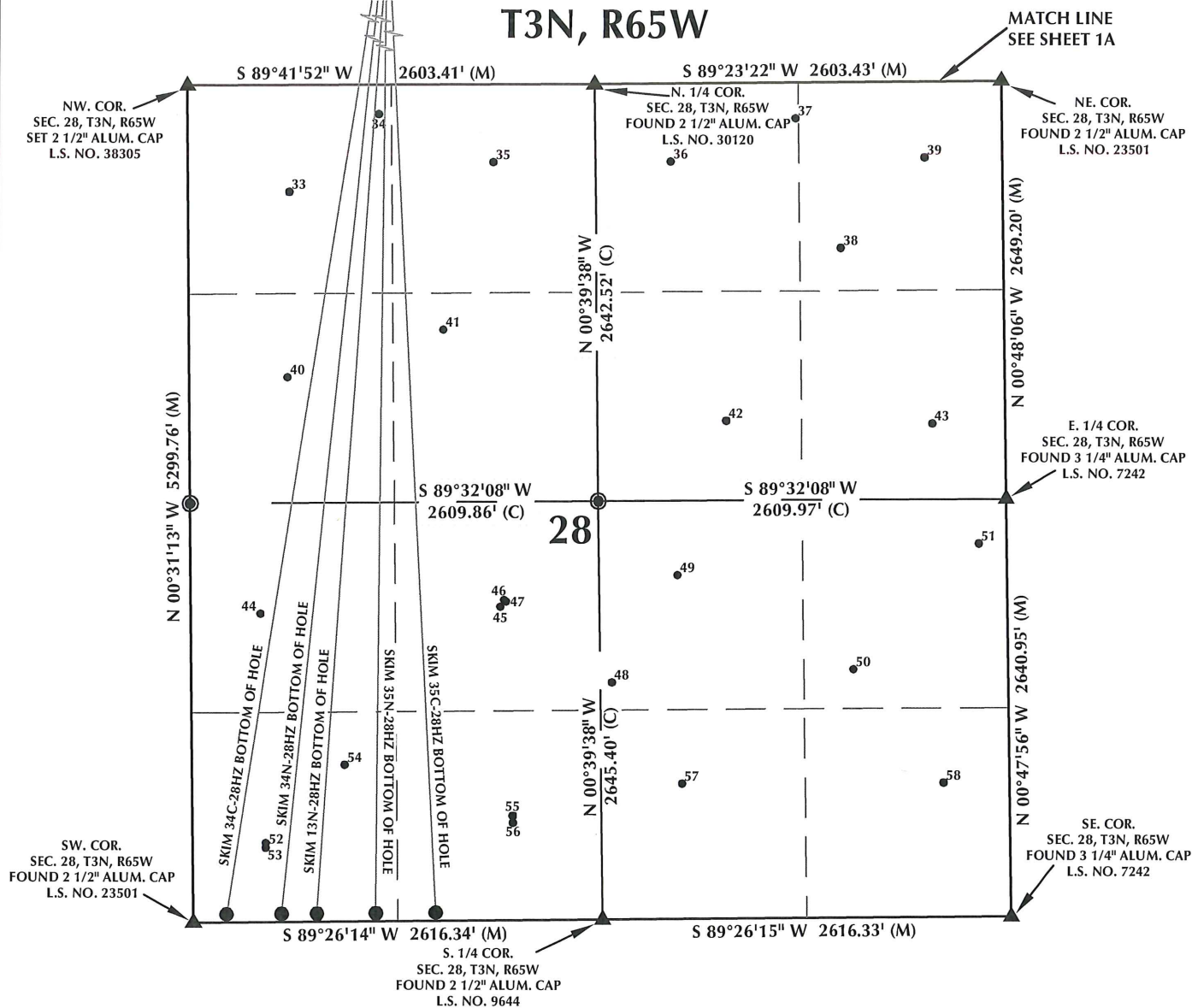
## CONSULTING, LLC

SHERIDAN OFFICE  
2155 North Main Street  
Sheridan, Wyoming 82801  
Phone 307-674-0609

LOVELAND OFFICE  
1635 Foxtrail Drive, Suite 204  
Loveland, Colorado 80538  
Phone 970-776-4331

DRAFTED BY:	LMO	CHECKED BY:	BJR	SHEET NO:
DATE DRAFTED:	8/8/14	DATE SURVEYED:	7/23/14	1A
REVISED:	10/31/14	FILE NAME:	14-46	1A OF 2

# MULTI-WELL PLAN SECTION 28 T3N, R65W



## WELL NOTES:

SKIM 34C-28HZ  
SURFACE: 639' FSL, 1196' FWL  
BOTTOM HOLE: 50' FSL, 213' FWL  
SKIM STATE 30N-21HZ  
SURFACE: 639' FSL, 1211' FWL  
BOTTOM HOLE: 50' FNL, 352' FWL  
SKIM 34N-28HZ  
SURFACE: 639' FSL, 1226' FWL  
BOTTOM HOLE: 50' FSL, 565' FWL  
SKIM STATE 4N-21HZ  
SURFACE: 639' FSL, 1241' FWL  
BOTTOM HOLE: 50' FNL, 742' FWL  
SKIM 13N-28HZ  
SURFACE: 639' FSL, 1256' FWL  
BOTTOM HOLE: 50' FSL, 792' FWL

SKIM 35N-28HZ  
SURFACE: 638' FSL, 1271' FWL  
BOTTOM HOLE: 50' FSL, 1169' FWL  
SKIM STATE 29N-21HZ  
SURFACE: 638' FSL, 1286' FWL  
BOTTOM HOLE: 50' FNL, 1182' FWL  
SKIM 35C-28HZ  
SURFACE: 638' FSL, 1301' FWL  
BOTTOM HOLE: 50' FSL, 1550' FWL

## NOTES:

1. ▲ INDICATES FOUND SECTION CORNER
2. ● INDICATES CALCULATED CORNER
3. ● INDICATES EXISTING WELL LOCATION
4. BASIS OF BEARING DERIVED FROM COLORADO COORDINATE SYSTEM 1983 NORTH ZONE UNLESS OTHERWISE NOTED.
5. ALL MEASURED DISTANCES ARE GRID.
6. COMBINED SCALE FACTOR: .99972948
7. WELL FOOTAGES ARE MEASURED AT RIGHT ANGLES TO THE SECTION LINES.



## WELL PAD - SKIM STATE 4N-21HZ

MULTI-WELL PLAN  
SKIM 34C-28HZ, SKIM STATE 30N-21HZ,  
SKIM 34N-28HZ, SKIM STATE 4N-21HZ,  
SKIM 13N-28HZ, SKIM 35N-28HZ,  
SKIM STATE 29N-21HZ & SKIM 35C-28HZ  
LOCATED IN SECTIONS 21 & 28  
T3N, R65W, 6TH P.M.  
WELD COUNTY, COLORADO

**Kerr-McGee Oil &  
Gas Onshore L.P.**  
1099 18th Street  
Denver, Colorado 80202



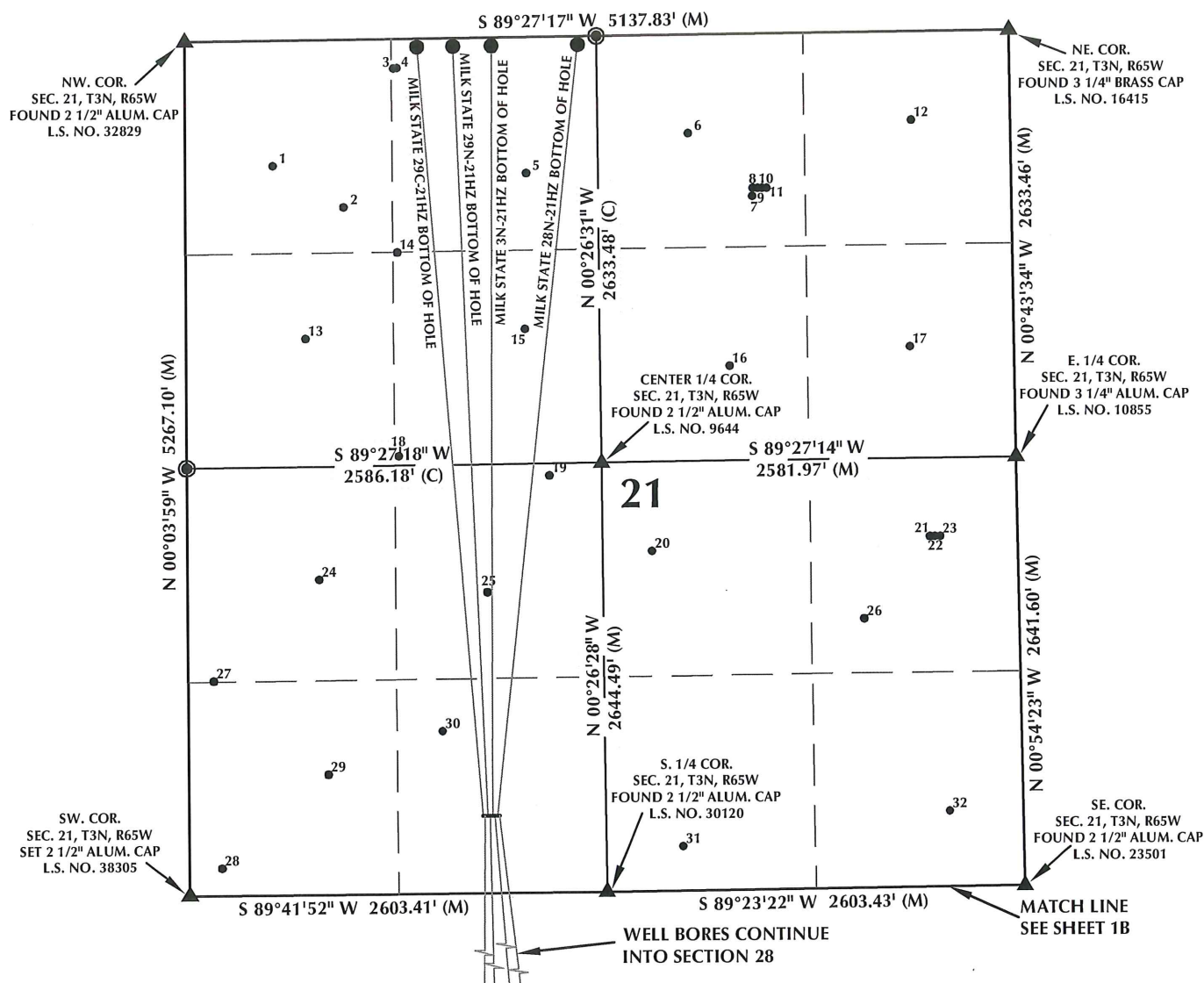
## CONSULTING, LLC

SHERIDAN OFFICE  
2155 North Main Street  
Sheridan, Wyoming 82801  
Phone 307-674-0609

LOVELAND OFFICE  
1635 Foxtrail Drive, Suite 204  
Loveland, Colorado 80538  
Phone 970-776-4331

DRAFTED BY: LMO	CHECKED BY: BJR	SHEET NO: 1B
DATE DRAFTED: 8/8/14	DATE SURVEYED: 7/23/14	1B OF 2
REVISED: 10/31/14	FILE NAME: 14-46	

# MULTI-WELL PLAN SECTION 21 T3N, R65W



## WELL NOTES:

MILK STATE 29C-21HZ  
SURFACE: 475' FSL, 1831' FWL  
BOTTOM HOLE: 50' FNL, 1447' FWL

MILK 35N-28HZ  
SURFACE: 475' FSL, 1846' FWL  
BOTTOM HOLE: 50' FSL, 1720' FWL

MILK STATE 29N-21HZ  
SURFACE: 475' FSL, 1861' FWL  
BOTTOM HOLE: 50' FNL, 1672' FWL

MILK 14N-28HZ  
SURFACE: 475' FSL, 1876' FWL  
BOTTOM HOLE: 50' FSL, 1924' FWL

MILK STATE 3N-21HZ  
SURFACE: 475' FSL, 1891' FWL  
BOTTOM HOLE: 50' FNL, 1913' FWL

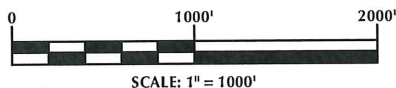
MILK 36N-28HZ  
SURFACE: 475' FSL, 1906' FWL  
BOTTOM HOLE: 50' FSL, 2301' FWL

MILK STATE 28N-21HZ  
SURFACE: 475' FSL, 1921' FWL  
BOTTOM HOLE: 50' FNL, 2452' FWL

MILK 36C-28HZ  
SURFACE: 475' FSL, 1936' FWL  
BOTTOM HOLE: 50' FSL, 2541' FWL

## NOTES:

1. ▲ INDICATES FOUND SECTION CORNER
2. ● INDICATES CALCULATED CORNER
3. ● INDICATES EXISTING WELL LOCATION
4. BASIS OF BEARING DERIVED FROM COLORADO COORDINATE SYSTEM 1983 NORTH ZONE UNLESS OTHERWISE NOTED.
5. ALL MEASURED DISTANCES ARE GRID.
6. COMBINED SCALE FACTOR: .99972948
7. WELL FOOTAGES ARE MEASURED AT RIGHT ANGLES TO THE SECTION LINES.



## WELL PAD - MILK 14N-28HZ

MULTI-WELL PLAN  
MILK STATE 29C-21HZ, MILK 35N-28HZ,  
MILK STATE 29N-21HZ, MILK 14N-28HZ,  
MILK STATE 3N-21HZ, MILK 36N-28HZ,  
MILK STATE 28N-21HZ & MILK 36C-28HZ  
LOCATED IN SECTIONS 21 & 28  
T3N, R65W, 6TH P.M.  
WELD COUNTY, COLORADO

**Kerr-McGee Oil &  
Gas Onshore L.P.**  
1099 18th Street  
Denver, Colorado 80202



## CONSULTING, LLC

SHERIDAN OFFICE  
2155 North Main Street  
Sheridan, Wyoming 82801  
Phone 307-674-0609

LOVELAND OFFICE  
1635 Foxtrail Drive, Suite 204  
Loveland, Colorado 80538  
Phone 970-776-4331

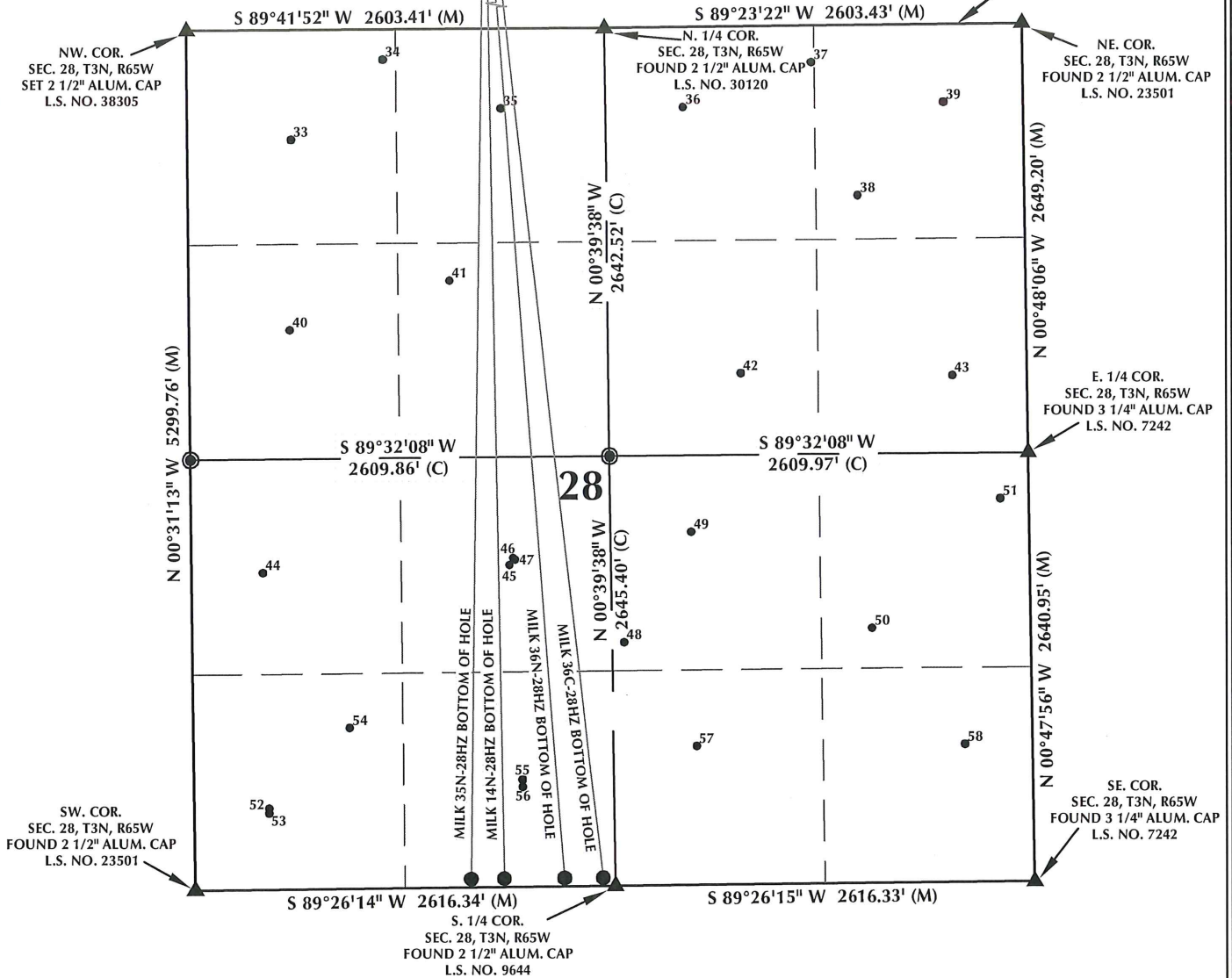
DRAFTED BY:	LMO	CHECKED BY:	BJR	SHEET NO:
DATE DRAFTED:	8/5/14	DATE SURVEYED:	7/23/14	1A
REVISED:	10/31/14	FILE NAME:	14-46	1A OF 2



# MULTI-WELL PLAN SECTION 28

T3N, R65W

MATCH LINE  
SEE SHEET 1A



## WELL NOTES:

MILK STATE 29C-21HZ  
SURFACE: 475' FSL, 1831' FWL  
BOTTOM HOLE: 50' FNL, 1447' FWL

MILK 35N-28HZ  
SURFACE: 475' FSL, 1846' FWL  
BOTTOM HOLE: 50' FSL, 1720' FWL

MILK STATE 29N-21HZ  
SURFACE: 475' FSL, 1861' FWL  
BOTTOM HOLE: 50' FNL, 1672' FWL

MILK 14N-28HZ  
SURFACE: 475' FSL, 1876' FWL  
BOTTOM HOLE: 50' FSL, 1924' FWL

MILK STATE 3N-21HZ  
SURFACE: 475' FSL, 1891' FWL  
BOTTOM HOLE: 50' FNL, 1913' FWL

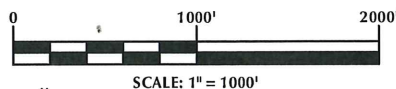
MILK 36N-28HZ  
SURFACE: 475' FSL, 1906' FWL  
BOTTOM HOLE: 50' FSL, 2301' FWL

MILK STATE 28N-21HZ  
SURFACE: 475' FSL, 1921' FWL  
BOTTOM HOLE: 50' FNL, 2452' FWL

MILK 36C-28HZ  
SURFACE: 475' FSL, 1936' FWL  
BOTTOM HOLE: 50' FSL, 2541' FWL

## NOTES:

- ▲ INDICATES FOUND SECTION CORNER
- INDICATES CALCULATED CORNER
- INDICATES EXISTING WELL LOCATION
- BASIS OF BEARING DERIVED FROM COLORADO COORDINATE SYSTEM 1983 NORTH ZONE UNLESS OTHERWISE NOTED.
- ALL MEASURED DISTANCES ARE GRID.
- COMBINED SCALE FACTOR: .99972948
- WELL FOOTAGES ARE MEASURED AT RIGHT ANGLES TO THE SECTION LINES.



## WELL PAD - MILK 14N-28HZ

MULTI-WELL PLAN  
MILK STATE 29C-21HZ, MILK 35N-28HZ,  
MILK STATE 29N-21HZ, MILK 14N-28HZ,  
MILK STATE 3N-21HZ, MILK 36N-28HZ,  
MILK STATE 28N-21HZ & MILK 36C-28HZ  
LOCATED IN SECTIONS 21 & 28  
T3N, R65W, 6TH P.M.  
WELD COUNTY, COLORADO

**Kerr-McGee Oil &  
Gas Onshore L.P.**

1099 18th Street  
Denver, Colorado 80202



## CONSULTING, LLC

SHERIDAN OFFICE  
2155 North Main Street  
Sheridan, Wyoming 82801  
Phone 307-674-0609

LOVELAND OFFICE  
1635 Foxtrail Drive, Suite 204  
Loveland, Colorado 80538  
Phone 970-776-4331

DRAFTED BY:	LMO	CHECKED BY:	BJR	SHEET NO:
DATE DRAFTED:	8/5/14	DATE SURVEYED:	7/23/14	1B
REVISED:	10/31/14	FILE NAME:	14-46	1B OF 2

# MULTI-WELL PLAN SECTION 21, T3N, R65W

NUMBER	WELL NAME	NAD 83	
		LATITUDE	LONGITUDE
1	UPRC 21-4J	40.216046°	-104.675824°
2	UPRR 22 PAN AM UT/U/ 2	40.215329°	-104.674261°
3	MOSER H 21-30	40.217675°	-104.673117°
4	MOSER H 21-29	40.217678°	-104.673030°
5	UPRC 21-3J	40.215863°	-104.670167°
6	FRANK-UPRR 31-21	40.216499°	-104.666548°
7	UPRR 22 PAN AM UNIT U 1	40.215418°	-104.665131°
8	MOSER 21-21	40.215554°	-104.665116°
9	MOSER 27-21	40.215554°	-104.665015°
10	MOSER 17-21	40.215554°	-104.664914°
11	MOSER 41-21	40.215554°	-104.664809°
12	FRANK 41-21	40.216670°	-104.661560°
13	UPRC 21-5J	40.213108°	-104.675145°
14	EMMA H 21-19	40.214547°	-104.673077°
15	UPRC 21-6J	40.213222°	-104.670242°
16	FRANK UPRR 32-21 #3	40.212549°	-104.665689°
17	FRANK-UPRR 42-21	40.212833°	-104.661656°
18	MOSER H 21-20	40.211103°	-104.673106°
19	MOSER H21-21	40.210736°	-104.669737°
20	FRANK H21-10	40.209434°	-104.667477°
21	MOSER 24-21	40.209613°	-104.661262°
22	MOSER 40-21	40.209615°	-104.661157°
23	MOSER 9-21	40.209618°	-104.661046°
24	FRANK H21-12	40.209027°	-104.674912°
25	FRANK H21-11	40.208777°	-104.671164°
26	FRANK 43-21 4	40.208240°	-104.662759°
27	MOSER H 21-33	40.207332°	-104.677295°
28	MOSER H28-30	40.204169°	-104.677178°
29	FRANK H21-13	40.205731°	-104.674771°
30	*FRANK 1-21C	40.206440°	-104.672218°
31	FRANK H21-15	40.204434°	-104.666881°
32	FRANK H21-16	40.204965°	-104.660917°

## NOTES:

- \* INDICATES EXISTING WELLS THAT WERE NOT SURVEYED BUT DERIVED FROM COLORADO OIL AND GAS CONSERVATION COMMISSION (COGCC).

**EXISTING WELL EXHIBIT  
SECTION 21, T3N, R65W, 6TH P.M.  
WELD COUNTY, COLORADO**

**Kerr-McGee Oil &  
Gas Onshore L.P.**  
1099 18th Street  
Denver, Colorado 80202



## CONSULTING, LLC

**SHERIDAN OFFICE**  
2155 North Main Street  
Sheridan, Wyoming 82801  
Phone 307-674-0609

**LOVELAND OFFICE**  
1635 Foxtrail Drive, Suite 204  
Loveland, Colorado 80538  
Phone 970-776-4331

DRAFTED BY:	LMO	CHECKED BY:	BJR	SHEET NO: <b>2A</b> 2A OF 2
DATE DRAFTED:	8/5/14	DATE SURVEYED:	7/23/14	
REVISED:		FILE NAME:	14-46	

# MULTI-WELL PLAN SECTION 28, T3N, R65W

NUMBER	WELL NAME	NAD 83	
		LATITUDE	LONGITUDE
33	MOSER 28-4	40.201844°	-104.675591°
34	MOSER H 28-29	40.203187°	-104.673532°
35	MOSER 28-3	40.202337°	-104.670920°
36	*MOSER 28-2	40.202326°	-104.666856°
37	MOSER H 28-27	40.203065°	-104.663988°
38	MOSER 41-28	40.200800°	-104.662970°
39	MOSER H 28-1	40.202368°	-104.661039°
40	MOSER 28-5	40.198618°	-104.675661°
41	MOSER 22-28	40.199426°	-104.672093°
42	MOSER 28-7	40.197811°	-104.665617°
43	MOSER 28-8	40.197737°	-104.660900°
44	MOORE UPRC H 28-12	40.194517°	-104.676314°
45	MOSER 11-28	40.194604°	-104.670827°
46	MOSER 22-28	40.194726°	-104.670744°
47	MOSER 6-28	40.194698°	-104.670699°
48	MOSER H28-24	40.193281°	-104.668284°
49	*CANNON LAND 28-10J	40.195136°	-104.666762°
50	CANNON 3-28 1	40.193477°	-104.662749°
51	MOSER H 27-32	40.195645°	-104.659861°
52	MOSER 33-28	40.190534°	-104.676236°
53	MOSER 13-28	40.190450°	-104.676238°
54	MOORE UPRC H 28-13	40.191881°	-104.674416°
55	MOSER 14-28	40.190977°	-104.670582°
56	MOSER 35-28	40.190854°	-104.670579°
57	CANNON LAND 28-15J	40.191513°	-104.666693°
58	CANNON LAND 28-16J	40.191499°	-104.660707°

## NOTES:

- \* INDICATES EXISTING WELLS THAT WERE NOT SURVEYED  
BUT DERIVED FROM COLORADO OIL AND GAS  
CONSERVATION COMMISSION (COGCC).

**EXISTING WELL EXHIBIT  
SECTION 28, T3N, R65W, 6TH P.M.  
WELD COUNTY, COLORADO**

**Kerr-McGee Oil &  
Gas Onshore L.P.**  
1099 18th Street  
Denver, Colorado 80202



## CONSULTING, LLC

**SHERIDAN OFFICE**  
2155 North Main Street  
Sheridan, Wyoming 82801  
Phone 307-674-0609

**LOVELAND OFFICE**  
1635 Foxtrail Drive, Suite 204  
Loveland, Colorado 80538  
Phone 970-776-4331

DRAFTED BY:	LMO	CHECKED BY:	BJR	SHEET NO: <b>2B</b> 2B OF 2
DATE DRAFTED:	8/5/14	DATE SURVEYED:	7/23/14	
REVISED:		FILE NAME:	14-46	