

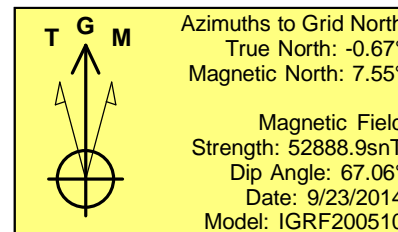
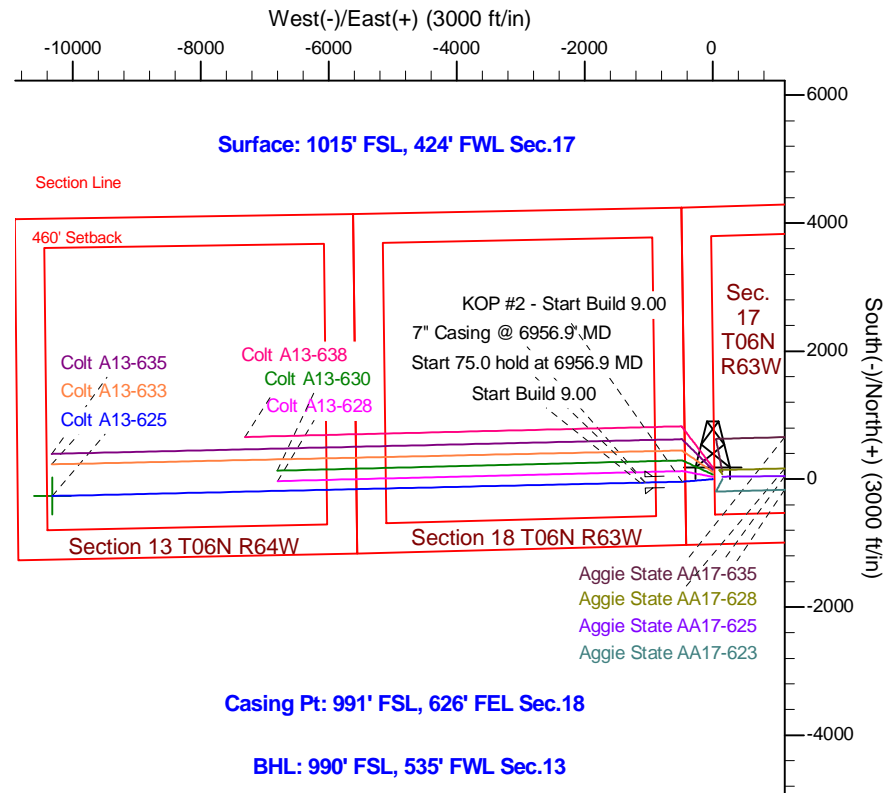
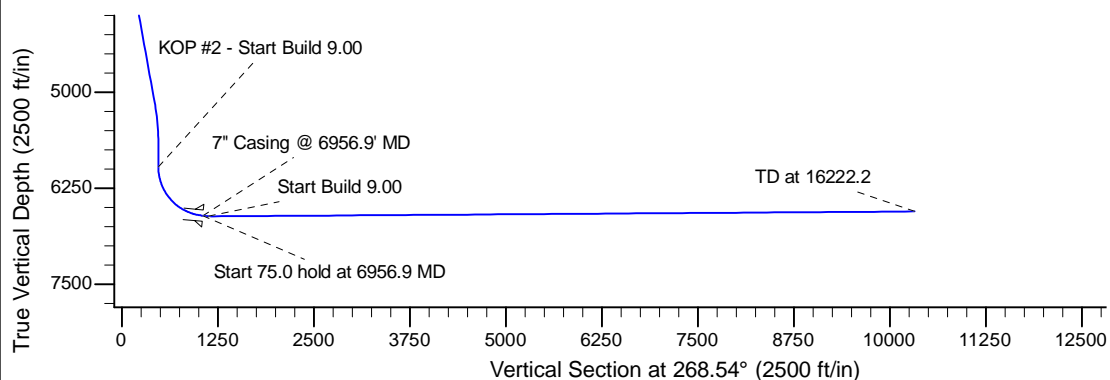
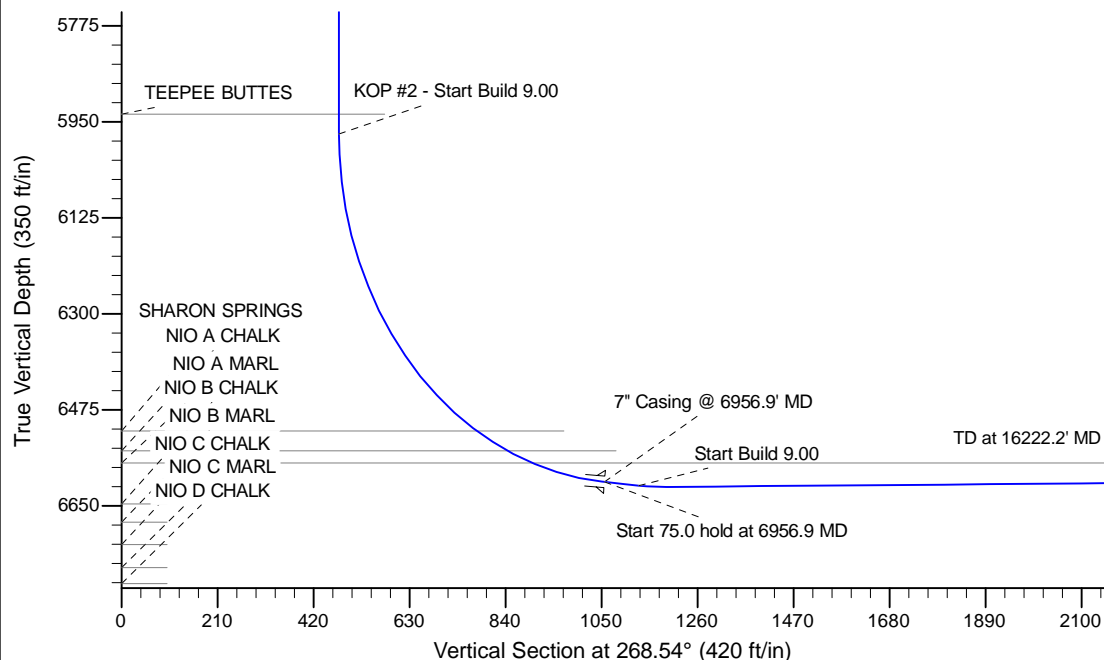
Project: Wattenberg Field
Site: A (Sec.17-T06N-R63W) Weld County, CO
Well: Colt A13-625
Wellbore: Original Drilling
Design: APD - Rev 0

Northern Region Drilling - Working

Geodetic System: US State Plane 1983
Datum: North American Datum 1983
Ellipsoid: GRS 1980
Zone: Colorado Northern Zone
System Datum: Mean Sea Level

SECTION DETAILS

Sec	MD	Inc	Azi	TVD	+N/-S	+E/-W	Dleg	TFace	Vsect	Target
1	0.0	0.00	0.00	0.0	0.0	0.0	0.00	0.00	0.0	
2	2500.0	0.00	0.00	2500.0	0.0	0.0	0.00	0.00	0.0	
3	3011.3	10.23	265.19	3008.6	-3.8	-45.3	2.00	265.19	45.4	
4	5183.6	10.23	265.19	5146.4	-36.2	-429.7	0.00	0.00	430.4	
5	5694.9	0.00	0.00	5655.0	-40.0	-475.0	2.00	180.00	475.9	
6	6012.4	0.00	0.00	5972.5	-40.0	-475.0	0.00	0.00	475.9	
7	6956.9	85.00	268.70	6606.7	-53.2	-1056.0	9.00	268.70	1057.0	
8	7031.9	85.00	268.70	6613.2	-54.9	-1130.7	0.00	0.00	1131.7	
9	7091.9	90.40	268.70	6615.6	-56.3	-1190.6	9.00	0.00	1191.6	
10	16222.2	90.40	268.70	6551.9	-263.6	-10318.3	0.00	0.00	10321.7	Colt A13-625 BHL 990'FSL, 535'FWL



WELL DETAILS: Colt A13-625				
Ground Level: 4665.0				
0.0	0.0	Northing	Easting	Latitude
		1420119.11	3286845.81	40.482050
				Longitude
				-104.468800
Plan: APD - Rev 0 (Colt A13-625/Original Drilling)				
Created By: Shailey Jewell		Date: 9:46, September 24 2014		
Checked: _____		Date: _____		
Reviewed: _____		Date: _____		
Approved: _____		Date: _____		