

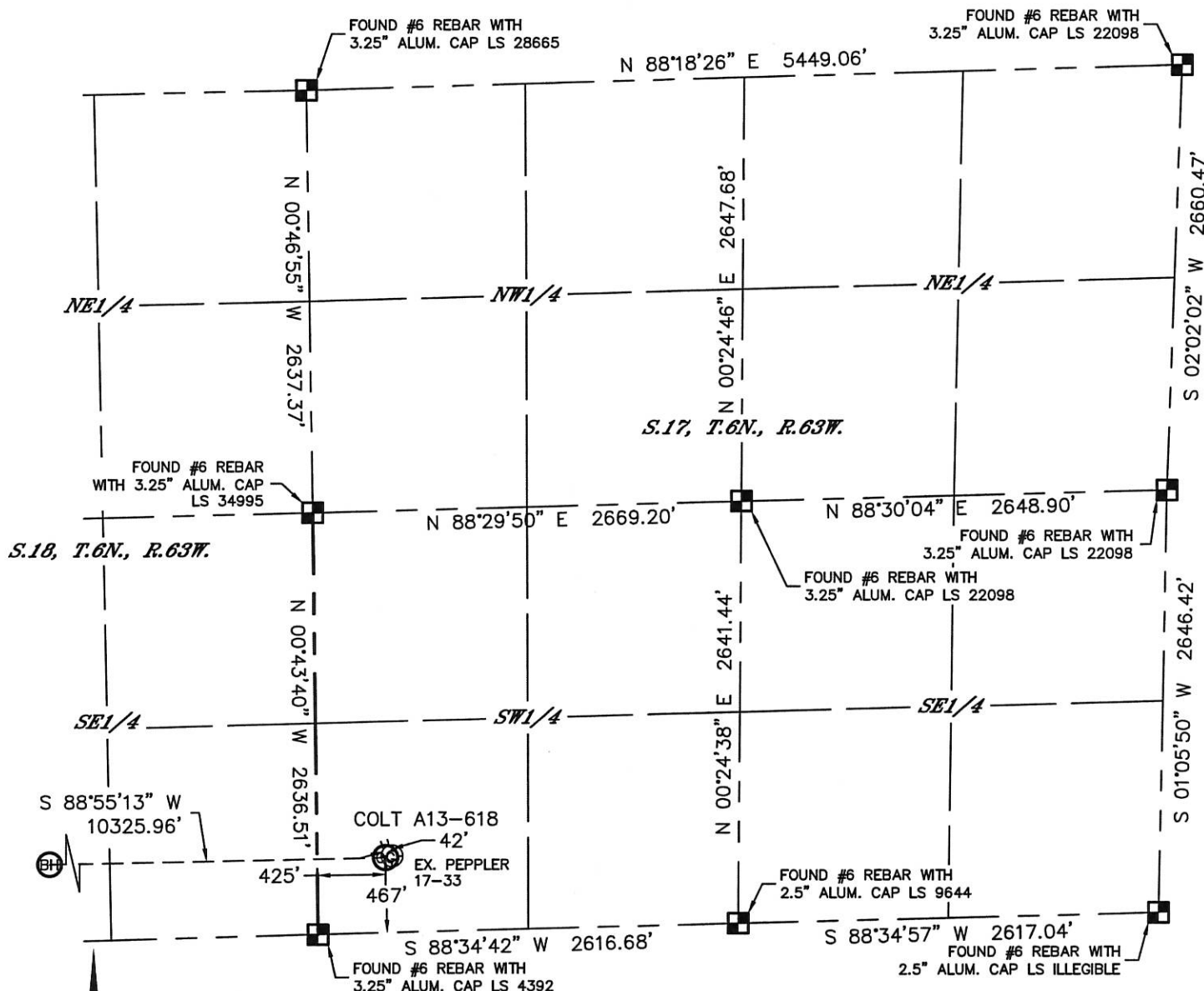


Lat40°, Inc. 6250 W. 10th Street, Unit 2, Greeley, CO 970-515-5294

WELL LOCATION CERTIFICATE

THIS MAP DOES NOT REPRESENT A BOUNDARY SURVEY

SECTION: 17
TOWNSHIP: 6N
RANGE: 63W



In accordance with a request from Greg Wilson with Noble Energy Inc. Lat40°, Inc. has determined the surface location of the COLT A13-618 to be 467' from the SOUTH line and 425' from the WEST line as measured at right angles from the section lines of Section 17, Township 6 North, Range 63 West and the bottom hole to be 510' from the SOUTH line and 535' from the WEST line as measured at right angles from the section lines of Section 13, Township 6 North, Range 64 West of the Sixth Principal Meridian, County of Weld, State of Colorado.

I hereby state that this Well Location Certificate was prepared by me, or under my direct supervision, that the fieldwork was completed on 7/24/2014, for and on behalf of Noble Energy Inc. That this is not a Land Survey Plat or an Improvement Survey Plat, and that it is not to be relied upon for establishment of fence, building, or other future improvement lines.

NOTE:

- 1) Bearings shown are Grid Bearings of the Colorado State Plane Coordinate System, North Zone, North American Datum 1983. The lineal dimensions as contained herein are based upon the "U.S. Survey Foot."
 - 2) Ground elevations are based on an observed GPS elevation (NAVD 1988 DATUM).
 - 3) IMPROVEMENTS: See LOCATION DRAWING for all visible improvements within 500' of disturbed area.
 - 4) SURFACE USE: CROP LAND
 - 5) INSTRUMENT OPERATOR: WYATT HALL
 - 6) NEAREST EXISTING WELL: PEPPLER 17-33, ±42' NE
- NEAREST CULTURAL ITEMS:
BUILDING: ±788' SW
BUILDING UNIT: ±788' SW
HIGH OCCUPANCY BUILDING UNIT: 5280'+
DESIGNATED OUTSIDE ACTIVITY AREA: 5280'+
PUBLIC ROAD: ±454' S (CR 68)
ABOVEGROUND UTILITY: ±442' S
RAILROAD: 5280'+
PROPERTY LINE: ±425' W

SURFACE LOCATION

LAT: 40.48055N
LONG: 104.46880W
PDOP: 1.9
ELEV: 4665'
1/4, 1/4: SWSW

BOTTOM HOLE

LAT: 40.48034N
LONG: 104.50590W

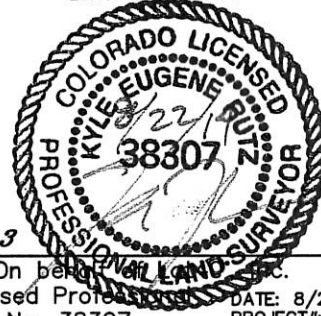
LEGEND

- = ALIQUOT MONUMENT AS DESCRIBED
○ = CALCULATED POSITION

SHEET 1 OF 3

Kyle E. Rutz-On behalf of Lat40°, Inc.
Colorado Licensed Professional Land Surveyor No. 38307

DATE: 8/22/2014
PROJECT#: 2013082



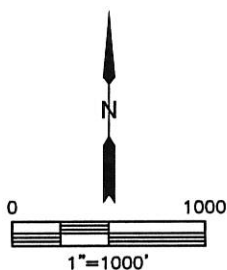
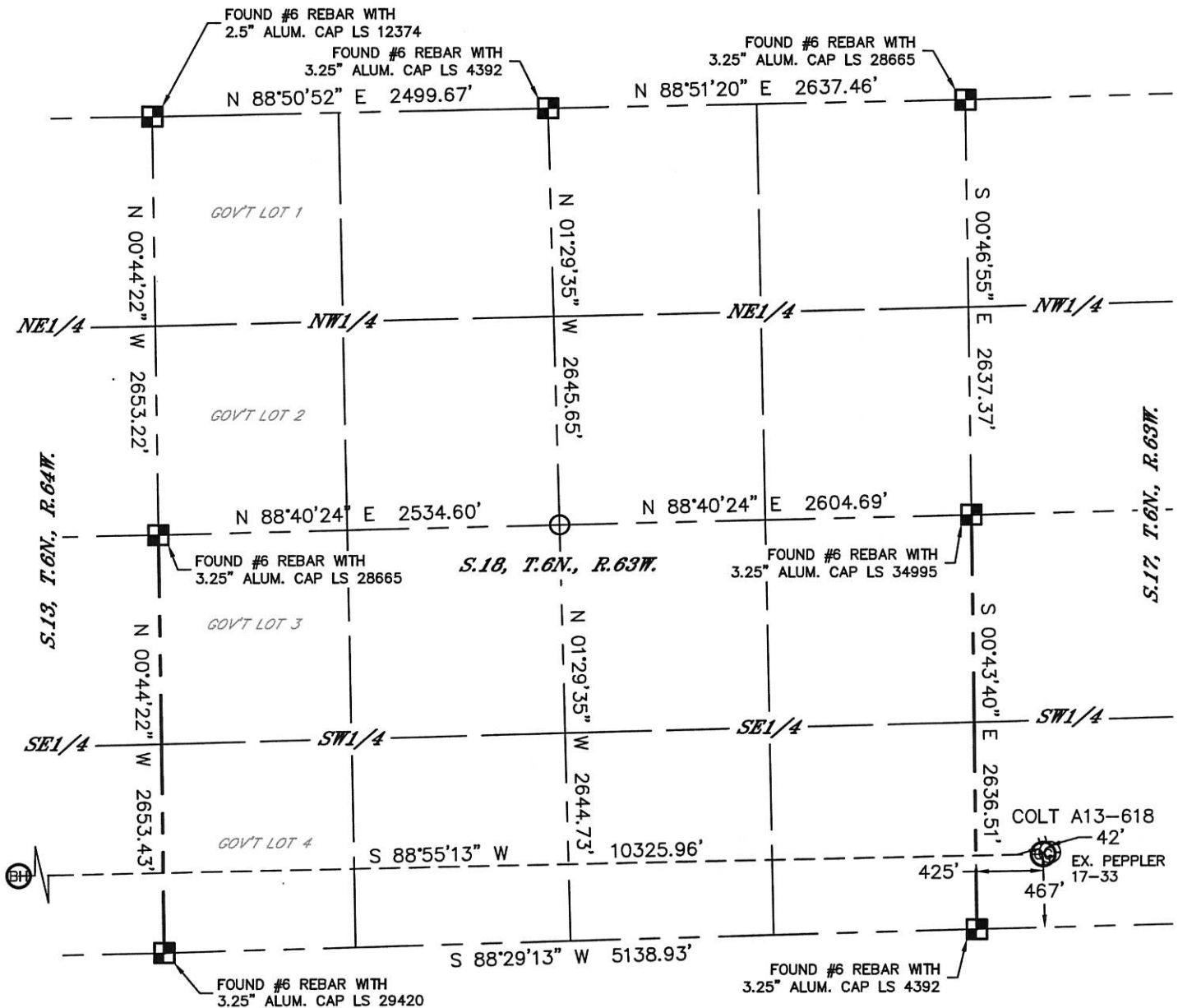


Lat40°, Inc. 6250 W. 10th Street, Unit 2, Greeley, CO 970-515-5294

WELL LOCATION CERTIFICATE

THIS MAP DOES NOT REPRESENT A BOUNDARY SURVEY

SECTION: 17
TOWNSHIP: 6N
RANGE: 63W



LEGEND

- = ALIQUOT MONUMENT AS DESCRIBED
- = CALCULATED POSITION

SHEET 2 OF 3

Kyle E. Rutz-On being
Colorado Licensed Professional
Land Surveyor No. 38307

DATE: 8/22/2014
PROJECT#: 2013082



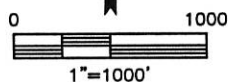
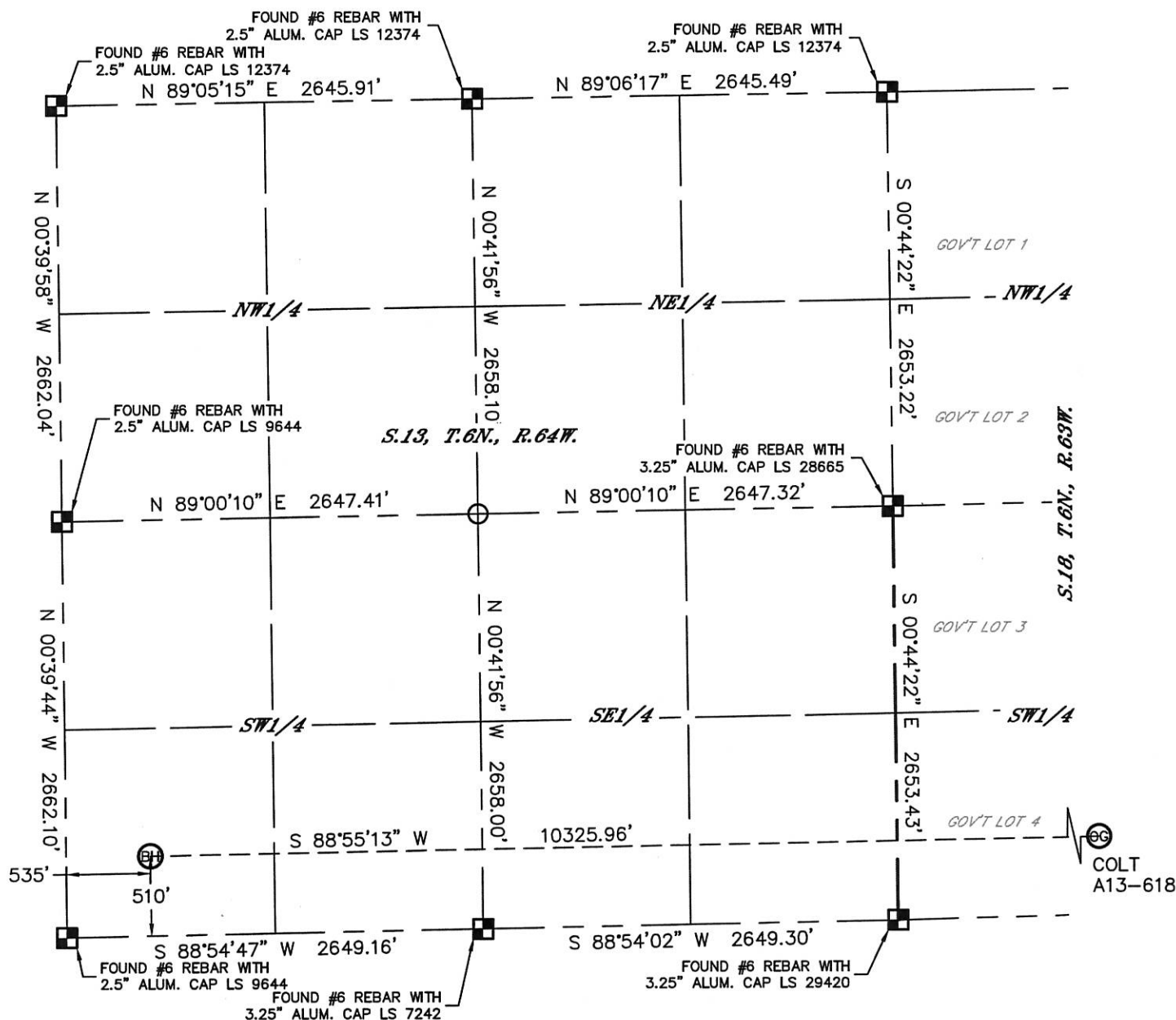


Lat40°, Inc. 6250 W. 10th Street, Unit 2, Greeley, CO 970-515-5294

WELL LOCATION CERTIFICATE

THIS MAP DOES NOT REPRESENT A BOUNDARY SURVEY

SECTION: 17
TOWNSHIP: 6N
RANGE: 63W



LEGEND

- = ALIQUOT MONUMENT AS DESCRIBED
- = CALCULATED POSITION

SHEET 3 OF 3

Kyle E. Rutz-On behalf of Lat40°, Inc.
Colorado Licensed Professional
Land Surveyor No. 38307

DATE: 8/22/2014
PROJECT#: 2013082



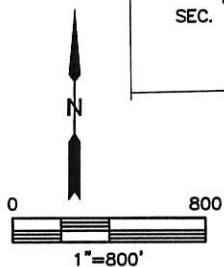
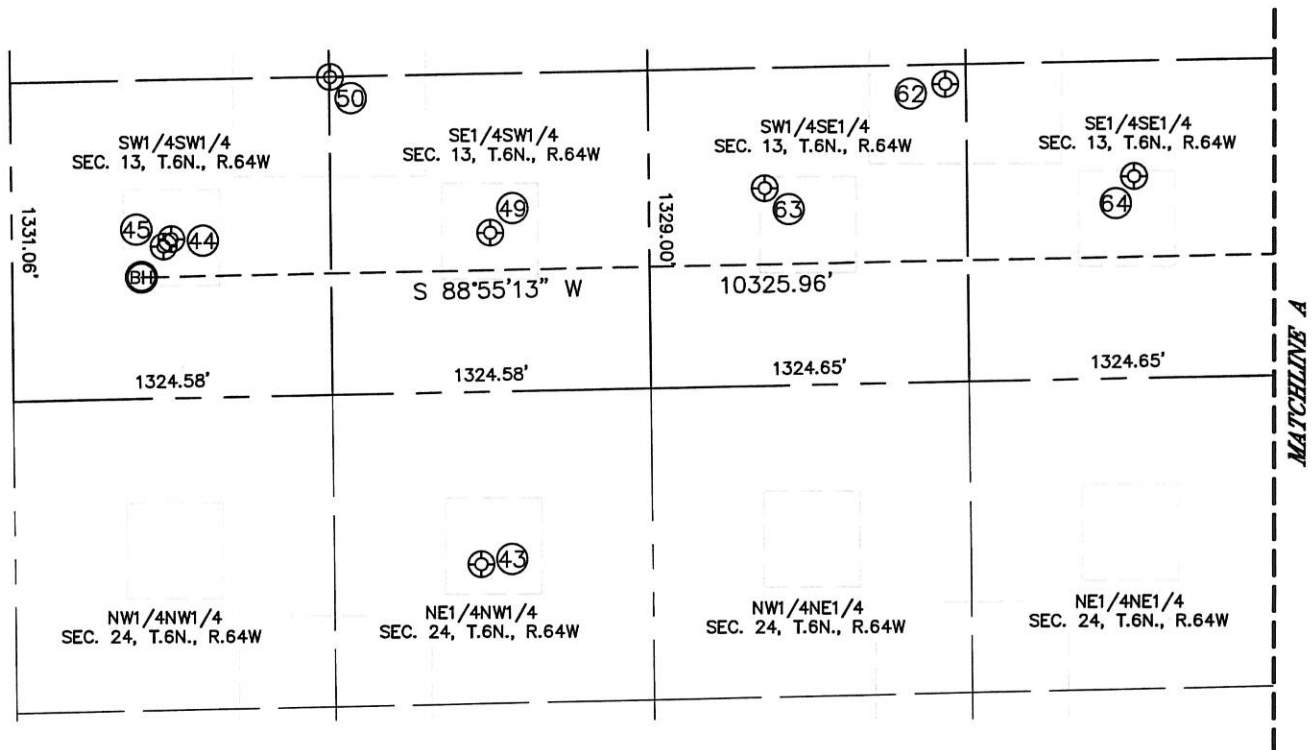
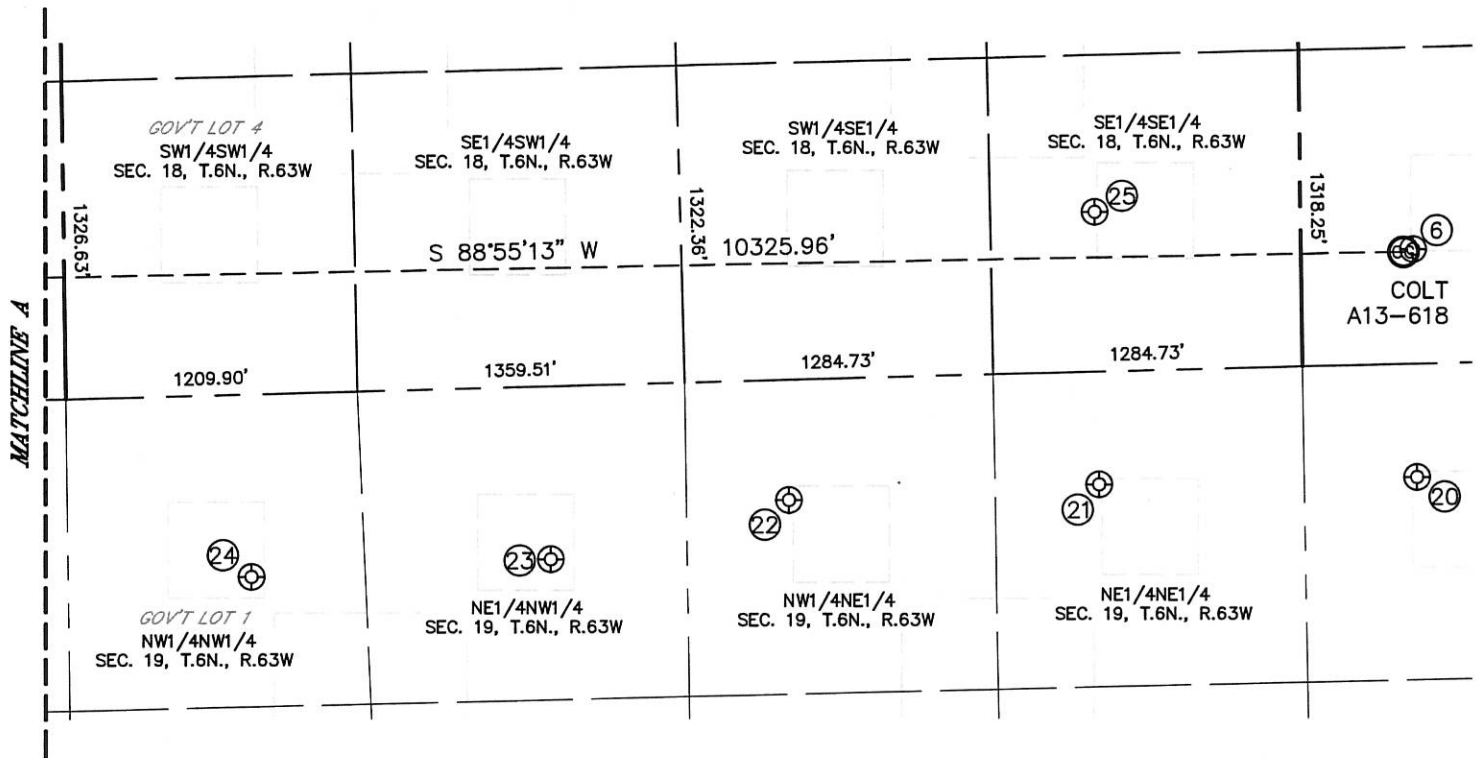


Lat40°, Inc. 6250 W. 10th Street, Unit 2, Greeley, CO 970-515-5294

SITE SKETCH

COLT A13-618

SECTION: 17
TOWNSHIP: 6N
RANGE: 63W



SHEET 1 OF 2

DATE: 8/22/2014
PROJECT#: 2013082



Lat40°, Inc. 6250 W. 10th Street, Unit 2, Greeley, CO 970-515-5294

SITE SKETCH

COLT A13-618

SECTION: 17
TOWNSHIP: 6N
RANGE: 63W

WELL NO.	WELL NAME	SHL FOOTAGE				SHL LAT°	SHL LONG°	PDOP	ELEV (FT.)	1/4/1/4
6	PEPPLER 17-33	478	FSL	465	FWL	40.48058	-104.46865	2.8	4665	SWSW
20	J&L FARMS 11-20	475	FNL	468	FWL	40.47796	-104.46863	1.9	4665	NWNW
21	J&L FARMS 41-19	471	FNL	854	FEL	40.47792	-104.47338	1.7	4664	NENE
22	J&L FARMS 31-19	502	FNL	2143	FEL	40.47778	-104.47801	1.6	4661	NWNE
23	LARSON USX AA 19-3	720	FNL	2003	FWL	40.47714	-104.48158	1.7	4656	NENW
24	LARSON USX AA 19-4	759	FNL	760	FWL	40.47699	-104.48605	1.9	4652	NWNW
25	PEPPLER 18-44	666	FSL	855	FEL	40.48104	-104.47340	2.1	4662	SESE
43	ROTH 24-21	718	FNL	1934	FWL	40.47700	-104.50087	1.9	4645	NENW
44	LAPP 13-33	666	FSL	662	FWL	40.48077	-104.50545	2.5	4665	SWSW
45	LAPP A24-30D	636	FSL	629	FWL	40.48068	-104.50557	1.7	4664	SWSW
49	LAPP 13-34	666	FSL	1923	FWL	40.48079	-104.50069	1.8	4648	SESW
50	LAPP 13-35	1328	FSL	1327	FWL	40.48260	-104.50306	1.8	4654	SESW
62	JOHNSON A 13-23	1245	FSL	1410	FEL	40.48243	-104.49386	2.8	4653	SWSE
63	JOHNSON A 13-15	827	FSL	2166	FEL	40.48126	-104.49657	2.7	4651	SWSE
64	ROTH A 13-16	845	FSL	630	FEL	40.48135	-104.49105	3.4	4654	SESE

SHEET 2 OF 2

DATE: 8/22/2014
PROJECT#: 2013082