

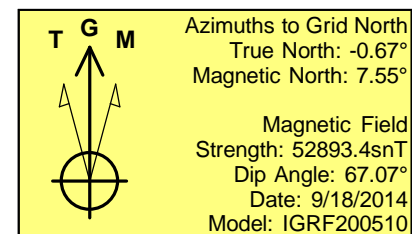
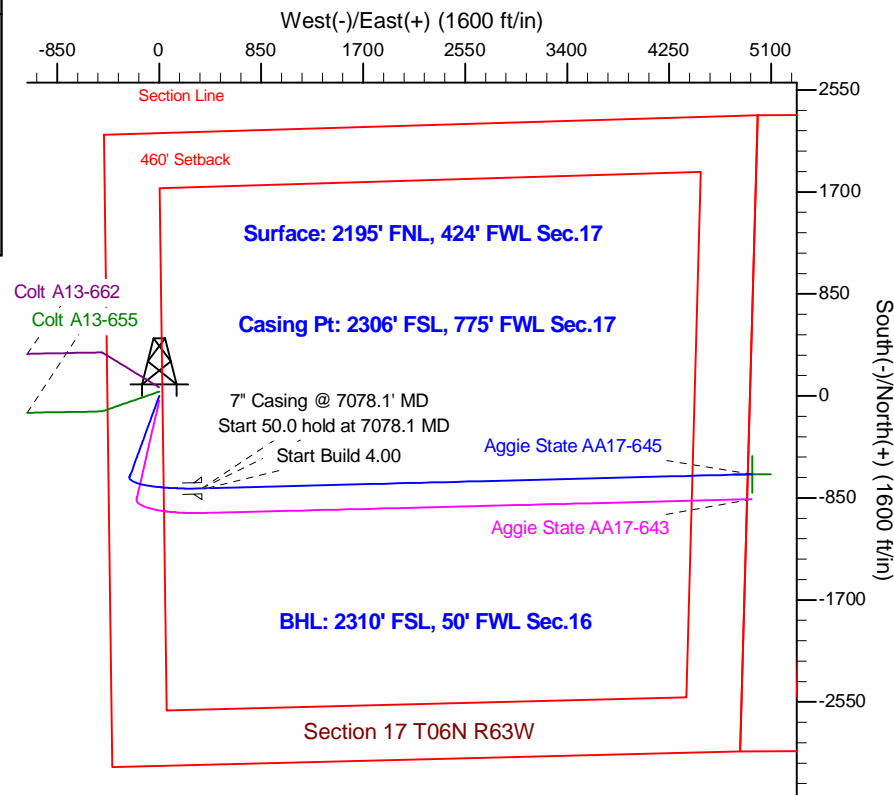
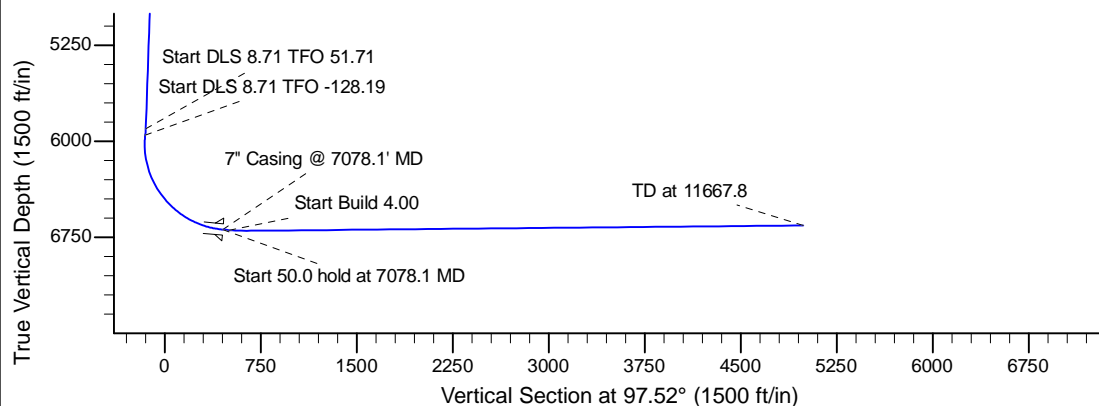
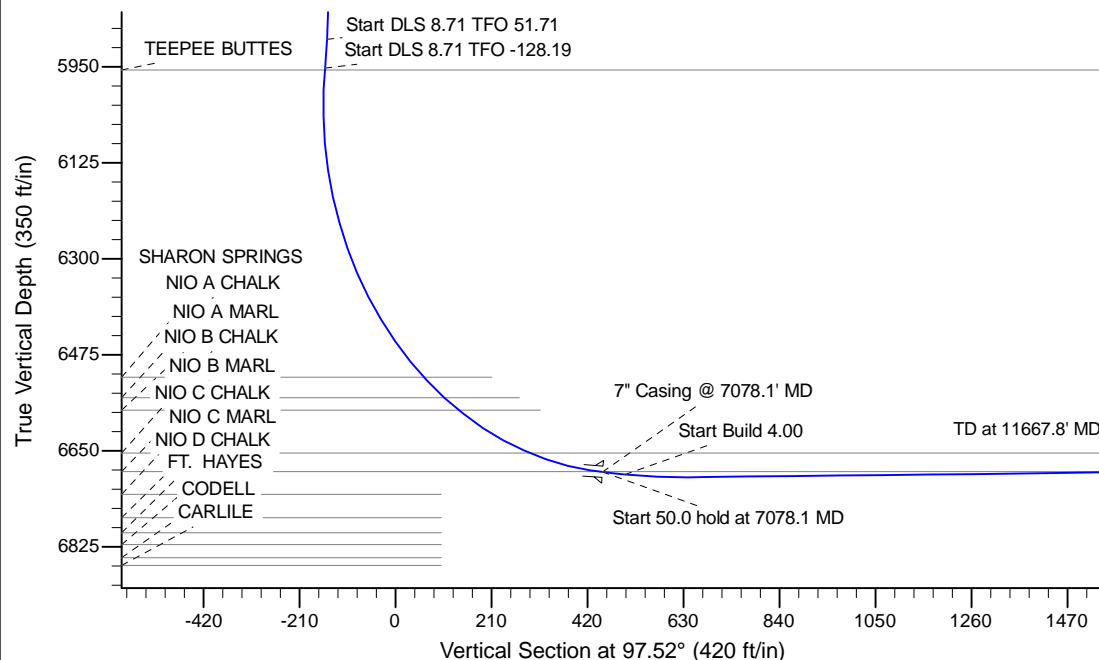
Project: Wattenberg Field  
Site: AA (Sec.17-T06N-R63W) Weld County, CO  
Well: Aggie State AA17-645  
Wellbore: Original Drilling  
Design: APD - Rev 0

# Northern Region Drilling - Working

Geodetic System: US State Plane 1983  
Datum: North American Datum 1983  
Ellipsoid: GRS 1980  
Zone: Colorado Northern Zone  
System Datum: Mean Sea Level

## SECTION DETAILS

Sec	MD	Inc	Azi	TVD	+N/-S	+E/-W	Dleg	TFace	VSec	Target
1	0.0	0.00	0.00	0.0	0.0	0.0	0.00	0.00	0.0	
2	1500.0	0.00	0.00	1500.0	0.0	0.0	0.00	0.00	0.0	
3	1975.0	9.50	200.00	1972.8	-36.9	-13.4	2.00	200.00	-8.5	
4	5956.8	9.50	200.00	5900.0	-654.5	-238.2	0.00	0.00	-150.5	
5	6010.1	12.90	216.54	5952.3	-663.4	-243.3	8.71	51.71	-154.3	
6	7078.1	85.00	88.53	6688.5	-770.0	355.0	8.71	-128.19	452.7	
7	7128.1	85.00	88.53	6692.9	-768.7	404.8	0.00	0.00	501.9	
8	7266.8	90.55	88.53	6698.2	-765.2	543.3	4.00	0.00	638.8	
9	11667.8	90.55	88.54	6656.1	-652.5	4942.6	0.00	115.74	4985.5	Aggie State AA17-645 BHL 2310'FSL, 50'FWL



WELL DETAILS: Aggie State AA17-645					
Ground Level: 4661.0					
0.0	0.0	Northing	Easting	Latitude	Longitude
		1422184.54	3286819.01	40.487720	-104.468810
Plan: APD - Rev 0 (Aggie State AA17-645/Original Drilling)					
Created By: Shailey Jewell		Date: 16:45, September 24 2014			
Checked: _____		Date: _____			
Reviewed: _____		Date: _____			
Approved: _____		Date: _____			