

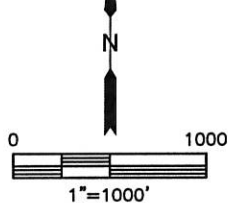
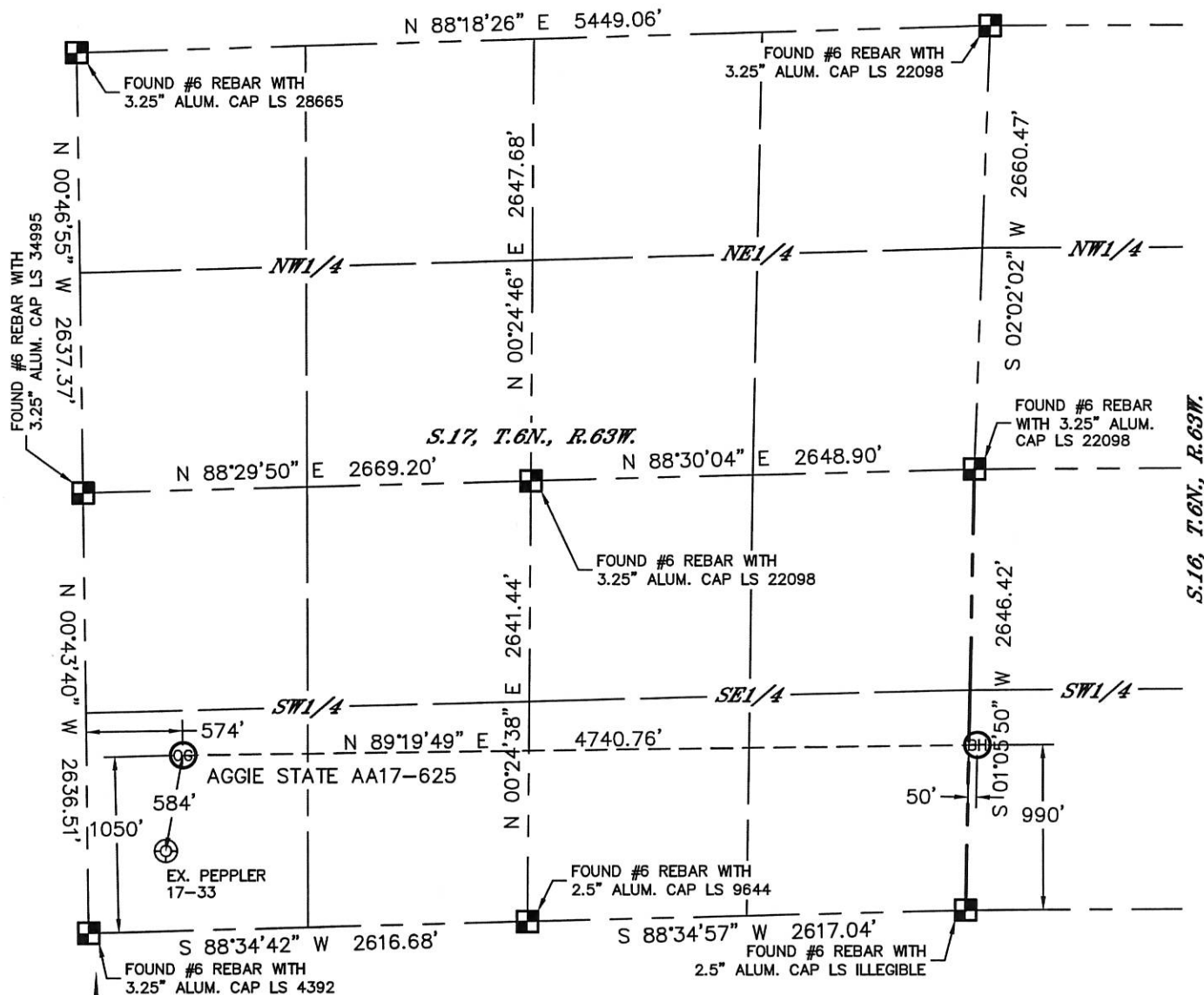


Lat40°, Inc. 6250 W. 10th Street, Unit 2, Greeley, CO 970-515-5294

WELL LOCATION CERTIFICATE

THIS MAP DOES NOT REPRESENT A BOUNDARY SURVEY

SECTION: 17
TOWNSHIP: 6N
RANGE: 63W



In accordance with a request from Greg Wilson with Noble Energy Inc. Lat40°, Inc. has determined the surface location of the AGGIE STATE AA17-625 to be 1050' from the SOUTH line and 574' from the WEST line as measured at right angles from the section lines of Section 17, Township 6 North, Range 63 West and the bottom hole to be 990' from the SOUTH line and 50' from the WEST line as measured at right angles from the section lines of Section 16, Township 6 North, Range 63 West of the Sixth Principal Meridian, County of Weld, State of Colorado.

I hereby state that this Well Location Certificate was prepared by me, or under my direct supervision, that the fieldwork was completed on 7/24/2014, for and on behalf of Noble Energy Inc. That this is not a Land Survey Plat or an Improvement Survey Plat, and that it is not to be relied upon for establishment of fence, building, or other future improvement lines.

NOTE:

- 1) Bearings shown are Grid Bearings of the Colorado State Plane Coordinate System, North Zone, North American Datum 1983. The lineal dimensions as contained herein are based upon the "U.S. Survey Foot."
 - 2) Ground elevations are based on an observed GPS elevation (NAVD 1988 DATUM).
 - 3) IMPROVEMENTS: See LOCATION DRAWING for all visible improvements within 500' of disturbed area.
 - 4) SURFACE USE: CROP LAND
 - 5) INSTRUMENT OPERATOR: WYATT HALL
 - 6) NEAREST EXISTING WELL: PEPPLER 17-33, ±584' SW
- NEAREST CULTURAL ITEMS:
BUILDING: ±1387' SW
BUILDING UNIT: ±1387' SW
HIGH OCCUPANCY BUILDING UNIT: 5280'+
DESIGNATED OUTSIDE ACTIVITY AREA: 5280'+
PUBLIC ROAD: ±1037' S (CR 68)
ABOVEGROUND UTILITY: ±1038' SW
RAILROAD: 5280'+
PROPERTY LINE: ±574' W

SURFACE LOCATION
LAT: 40.48215N
LONG: 104.46826W
PDOP: 1.7
ELEV: 4666'
1/4,1/4: SWSW

BOTTOM HOLE
LAT: 40.48215N
LONG: 104.45122W

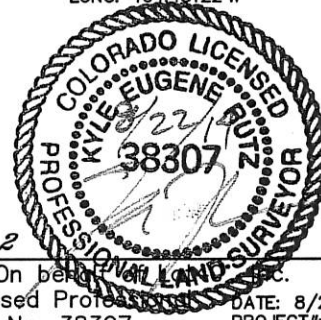
LEGEND

- = ALIQUOT MONUMENT AS DESCRIBED
○ = CALCULATED POSITION

SHEET 1 OF 2

Kyle E. Rutz-On behalf of Lat40°, Inc.
Colorado Licensed Professional
Land Surveyor No. 38307

DATE: 8/22/2014
PROJECT#: 2013082



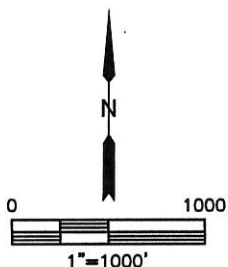
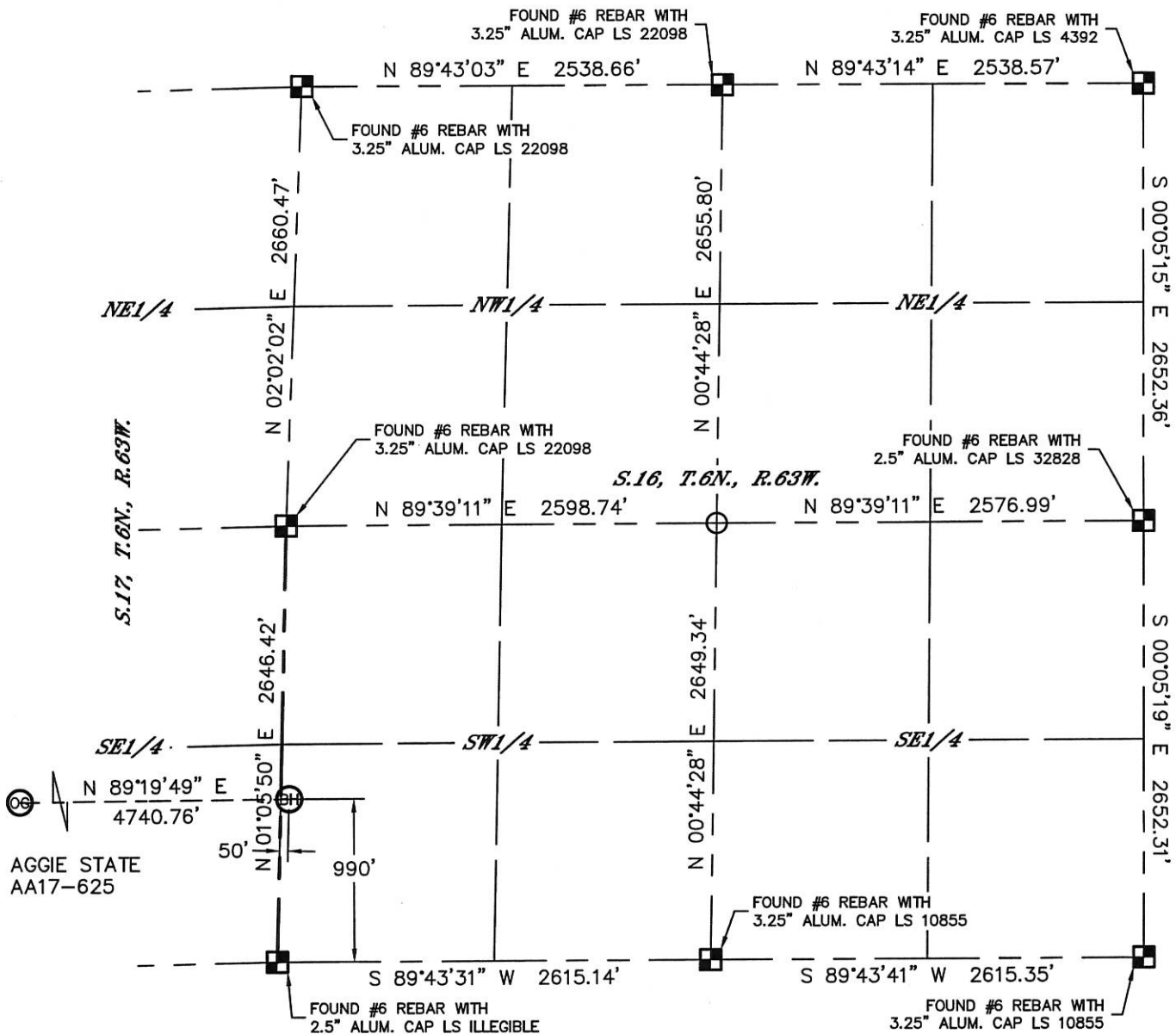


Lat40°, Inc. 6250 W. 10th Street, Unit 2, Greeley, CO 970-515-5294

WELL LOCATION CERTIFICATE

THIS MAP DOES NOT REPRESENT A BOUNDARY SURVEY

SECTION: 17
TOWNSHIP: 6N
RANGE: 63W

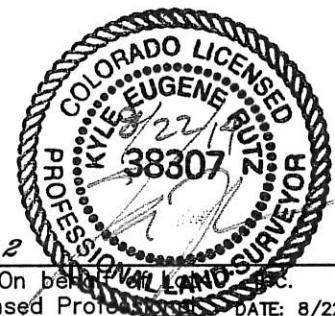


- LEGEND
- = ALIQUOT MONUMENT AS DESCRIBED
 - = CALCULATED POSITION

SHEET 2 OF 2

Kyle E. Rutz-On behalf of Lat40°, Inc.
Colorado Licensed Professional Land Surveyor No. 38307

DATE: 8/22/2014
PROJECT#: 2013082



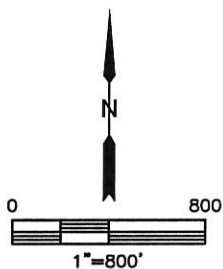
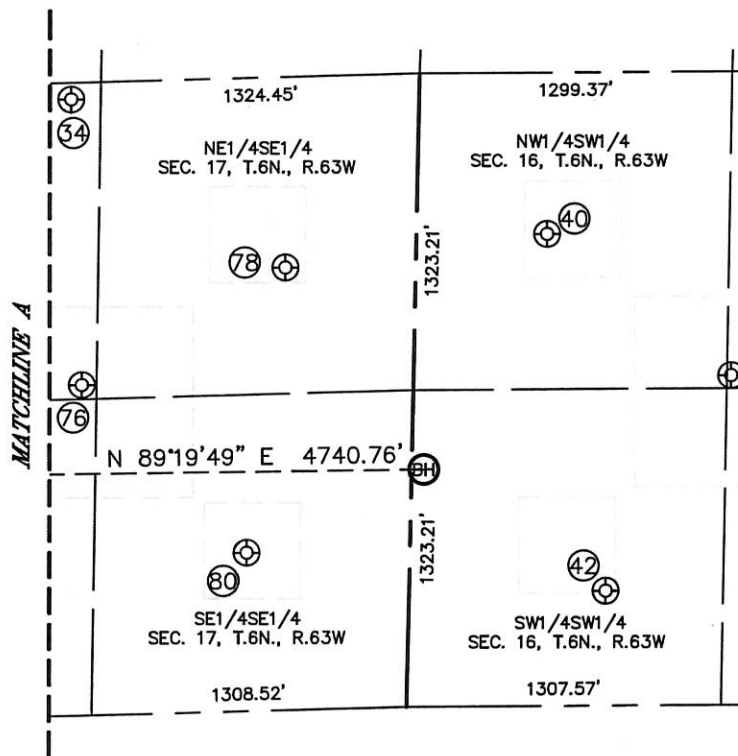
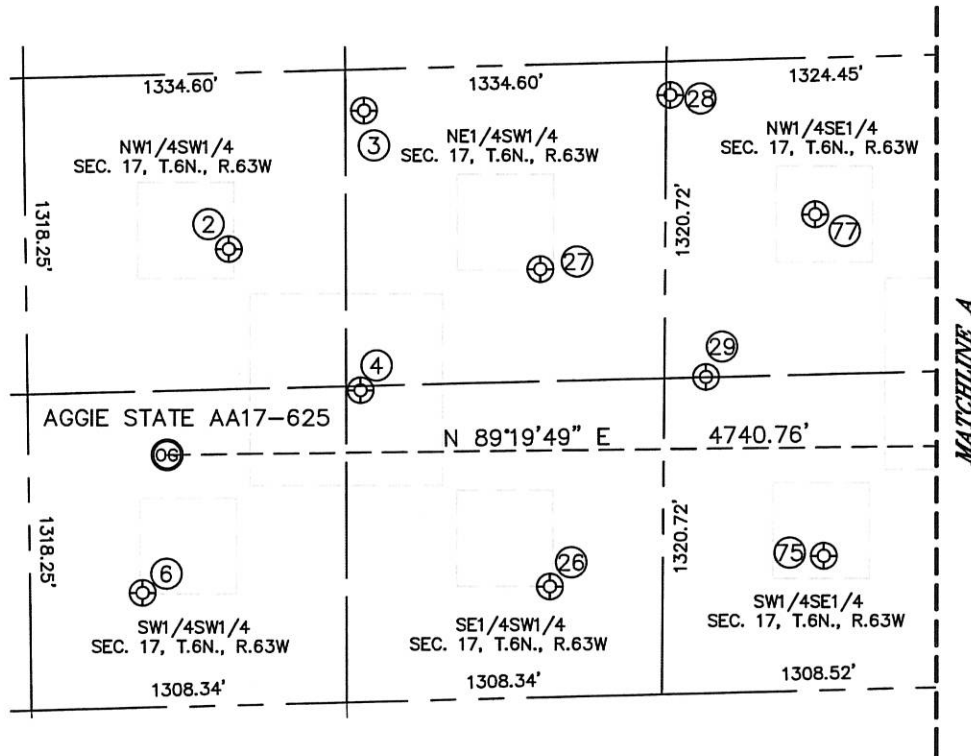


Lat40°, Inc. 6250 W. 10th Street, Unit 2, Greeley, CO 970-515-5294

SITE SKETCH

AGGIE STATE AA17-625

SECTION: 17
TOWNSHIP: 6N
RANGE: 63W



SHEET 1 OF 2

DATE: 8/22/2014
PROJECT#: 2013082



Lat40°, Inc. 6250 W. 10th Street, Unit 2, Greeley, CO 970-515-5294

SITE SKETCH

AGGIE STATE AA17-625

SECTION: 17
TOWNSHIP: 6N
RANGE: 63W

WELL NO.	WELL NAME	SHL FOOTAGE				SHL LAT°	SHL LONG°	PDOP	ELEV (FT.)	1/4/1/4
2	PEPPLER 17-32	1903	FSL	841	FWL	40.48450	-104.46730	1.9	4681	NWSW
3	PEPPLER PC AA 17-20	2465	FSL	1410	FWL	40.48607	-104.46526	2.0	4671	NESW
4	PEPPLER PC AA 17-25	1301	FSL	1380	FWL	40.48287	-104.46536	3.3	4667	SESW
6	PEPPLER 17-33	478	FSL	465	FWL	40.48058	-104.46865	2.8	4665	SWSW
26	PEPPLER 17-34	460	FSL	2157	FWL	40.48059	-104.46257	1.8	4669	SESW
27	PEPPLER 17-31	1787	FSL	2134	FWL	40.48423	-104.46266	2.0	4670	NESW
28	BASHOR PC AA 17-21	2499	FSL	2628	FEL	40.48621	-104.46069	1.9	4675	NWSE
29	BASHOR PC AA 17-24	1276	FSL	2457	FEL	40.48297	-104.46020	2.3	4670	NWSE
34	BASHOR PC AA 17-22	2573	FSL	1445	FEL	40.48644	-104.45643	2.4	4677	NWSE
40	BASHOR STATE AA 16-12	1973	FSL	543	FWL	40.48484	-104.44934	3.1	4678	NWSW
42	BASHOR STATE AA 16-13	479	FSL	817	FWL	40.48073	-104.44852	3.0	4680	SWSW
75	BASHOR PC AA 17-15	560	FSL	1954	FEL	40.48091	-104.45848	2.2	4670	SWSE
76	BASHOR PC AA17-23	1380	FSL	1377	FEL	40.48318	-104.45631	2.6	4673	NWSE
77	BASHOR 17-42	1987	FSL	2017	FEL	40.48482	-104.45855	2.6	4673	NWSE
78	BASHOR 17-41	1848	FSL	542	FEL	40.48449	-104.45325	2.3	4675	NESE
80	BASHOR PC AA17-16	660	FSL	678	FEL	40.48122	-104.45388	3.1	4674	SESE

SHEET 2 OF 2

DATE: 8/22/2014
PROJECT#: 2013082