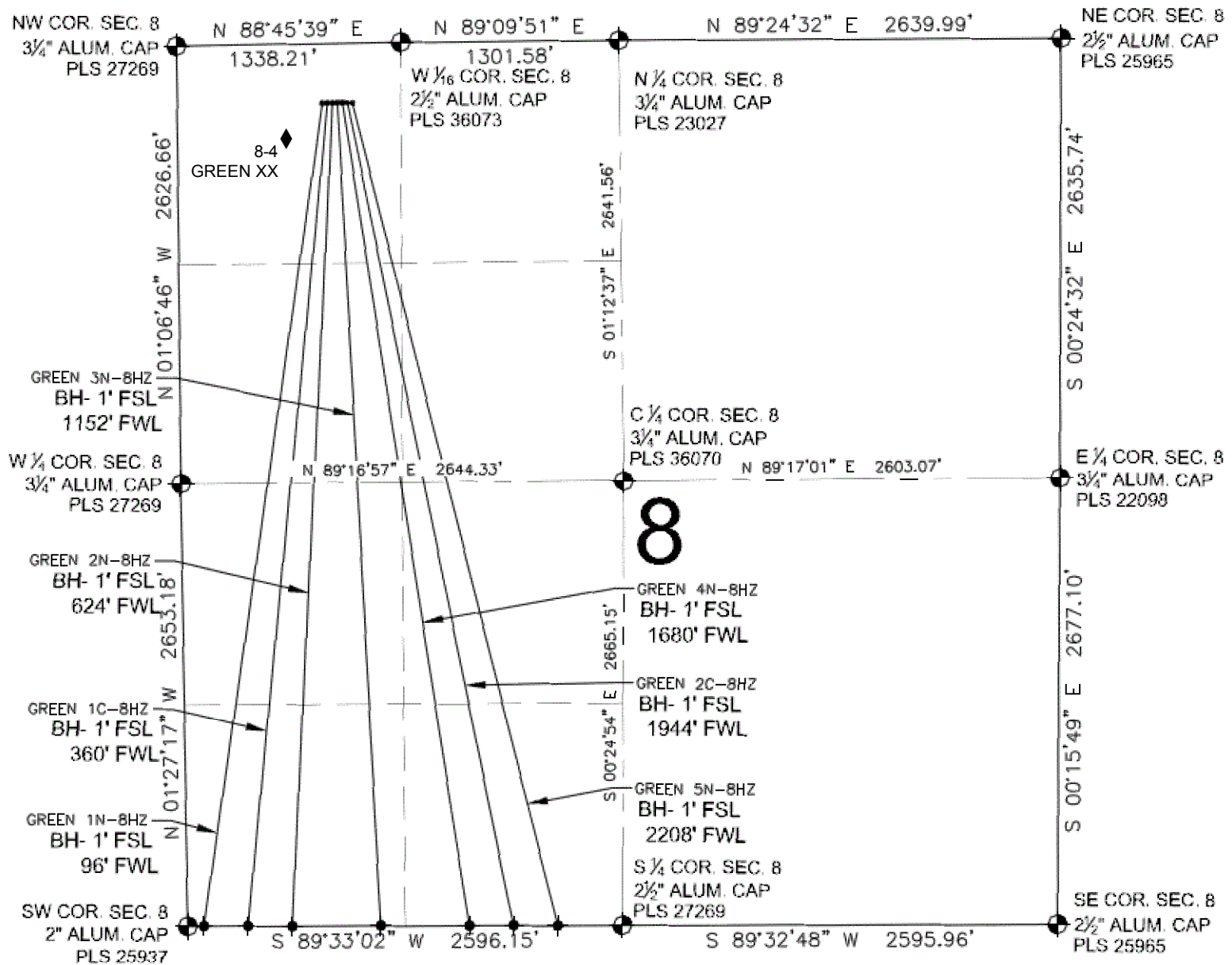


GREEN 3N-8HZ MULTI-WELL PLAN

SECTION 8, TOWNSHIP 1 NORTH, RANGE 65 WEST, 6TH P.M.



NOTES:

GREEN 1N-8HZ TO BE AT 357' FNL, 868' FWL.
 BOTTOM HOLE AT 1' FSL & 96' FWL.
 GREEN 1C-8HZ TO BE AT 357' FNL, 898' FWL.
 BOTTOM HOLE AT 1' FSL & 360' FWL.
 GREEN 2N-8HZ TO BE AT 356' FNL, 928' FWL.
 BOTTOM HOLE AT 1' FSL & 624' FWL.
 GREEN 3N-8HZ TO BE AT 356' FNL, 958' FWL.
 BOTTOM HOLE AT 1' FSL & 1152' FWL.
 GREEN 4N-8HZ TO BE AT 356' FNL, 988' FWL.
 BOTTOM HOLE AT 1' FSL & 1680' FWL.
 GREEN 2C-8HZ TO BE AT 356' FNL, 1018' FWL.
 BOTTOM HOLE AT 1' FSL & 1944' FWL.
 GREEN 5N-8HZ TO BE AT 356' FNL, 1048' FWL.
 BOTTOM HOLE AT 1' FSL & 2208' FWL.

LEGEND

- = EXISTING MONUMENT
- = PROPOSED WELL
- ◆ = BOTTOM HOLE
- ◆ = EXISTING WELL
- BH = BOTTOM HOLE

Date created: 11/20/2014
 Created by: APC Regulatory GIS
 Scale: 1:11,000
 Projection: NAD83 UTM 13N

0 500 1,000
 Feet



Anadarko
 Petroleum Corporation