

**WELL BORE CONTINUES
INTO SECTION 6**

NW. COR. /
SEC. 7, T1N, R65W
FOUND 2" ALUM. CAP
L.S. NO. 25937

S 89°25'37" W 2640.09' (M)

N. 1/4 COR.
SEC. 7, T1N, R65W /
FOUND 3 1/4" ALUM. CAP
L.S. NO. 25937

NE. COR.
SEC. 7, T1N, R65W
FOUND 3 1/4" ALUM. CAP
L.S. NO. 27269

W. 1/4 COR.
SEC. 7, T1N, R65W
FOUND 2" ALUM. CAP
L.S. NO. 25937

2663.43' (M)

N 00° 23' 14" W
1332.08' (M)

N 00° 25' 21" W
1332.11' (M)

S. 1/16 COR.
SEC. 7, T1N, R65W
& SEC. 12, T1N, R66W
FOUND 2" ALUM. CAP
L.S. NO. 25937

S 88°57'13" W
2618.58' (M)

CENTER 1/4 COR.
SEC. 7, T1N, R65W
FOUND 2 1/2" ALUM. CAP
L.S. NO. 25937 \

N 01°08'56" W
2649 08' (M)

N 01°09'46" W

S 88°56'20" W
2638.29' (M)

N 12°36'56" E 5530' GRID
N 13°07'52" E TRUE
N 04°44'56" E MAGNETIC

6'45" W 2626.59' (M)

7112" W 2653 24' (M)

SURFACE LOCATION
GROUND ELEVATION= 4978.6'
NAD 83
LATITUDE= 40.059844°
LONGITUDE= -104.702195°

BOTTOM HOLE LOCATION
NAD 83
LATITUDE= 40.074628°
LONGITUDE= -104.697706°

LATITUDE= 40°04'28.659"
LONGITUDE= -104°41'51.740"

S. 1/4 COR.
SEC. 7, T1N, R65W
FOUND 3 1/4" ALUM. CAP
L.S. NO. 25937

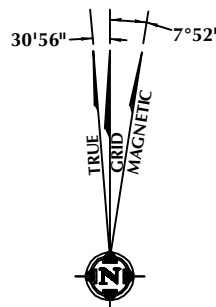
S 88°49'56" W 2651.74' (M)

SE. COR.
SEC. 7, T1N, R65W
FOUND 2" ALUM. CAP
L.S. NO. 25937

THIS IS TO CERTIFY THAT THE ABOVE PLAT WAS PREPARED FROM FIELD NOTES OF ACTUAL SURVEY MADE BY ME OR UNDER MY SUPERVISION AND THAT THE SAME ARE TRUE AND CORRECT TO THE BEST OF MY KNOWLEDGE AND BELIEF. THIS CERTIFICATE DOES NOT REPRESENT A LAND SURVEY PLAT OR IMPROVEMENT SURVEY PLAT AS DEFINED BY S.S. 38-513.02 AND CANNOT BE RELIED UPON TO DETERMINE OWNERSHIP.

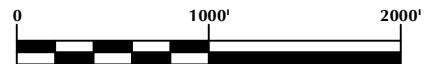
Benjamin J. Reenders
 BENJAMIN J. REENDERS
 PROFESSIONAL LAND SURVEYOR
 COLORADO REGISTRATION NUMBER 48305
 7/25/14

NOTICE: ACCORDING TO COLORADO STATE LAW YOU MUST COMMENCE ANY LEGAL ACTION BASED UPON ANY DEFECT IN THIS SURVEY WITHIN THREE YEARS AFTER YOU FIRST DISCOVER SUCH DEFECT. IN NO EVENT MAY ANY ACTION BASED UPON ANY DEFECT IN THIS SURVEY BE COMMENCED MORE THAN TEN YEARS FROM THE DATE ON THE CERTIFICATION SHOWN HEREON.



NOTE:
MAGNETIC NORTH IS CURRENT AS OF 7/21/2014.
MAGNETIC NORTH CHANGES WEST 0°08' PER YEAR.

1. ▲ INDICATES FOUND SECTION CORNER
2. ● INDICATES CALCULATED CORNER
3. ELEVATION BASED ON NAVD88 (GEOID09)
4. BASIS OF BEARING DERIVED FROM COLORADO COORDINATE SYSTEM 1983 NORTH ZONE UNLESS OTHERWISE NOTED.
5. ALL MEASURED DISTANCES ARE GRID.
COMBINED SCALE FACTOR: .99972680
6. OPERATOR: ROB WILSON / PDOP = 1.3
7. SEE ADDENDUM TO WELL LOCATION CERTIFICATE FOR EXISTING IMPROVEMENTS WITHIN 500' OF THE WELL PAD.
8. WELL FOOTAGES ARE MEASURED AT RIGHT ANGLES TO THE SECTION LINES.
9. THE BOTTOM OF HOLE BEARS N12°36'56"E 5530' FROM THE SURFACE LOCATION.



SCALE: 1" = 1 000'

WELL LOCATION CERTIFICATE
410' FSL & 1435' FEL SWSE (SURFACE)
LOCATED IN SECTION 7
500' FSL & 124' FEL SESE (BOTTOM)
LOCATED IN SECTION 6
T1N, R65W, 6TH P.M.
WELD COUNTY, COLORADO

**Kerr-McGee Oil &
Gas Onshore L.P.**
1099 18th Street
Denver, Colorado 80202



SHERIDAN OFFICE
2155 North Main Street
Sheridan, Wyoming 82801
Phone 307-674-0609

LOVELAND OFFICE
1635 Foxtrail Drive, Suite 204
Loveland, Colorado 80538
Phone 970-776-4331

DRAFTED BY: LMO	CHECKED BY: BJR	SHEET NO: 1 1 OF 2
DATE DRAFTED: 7/25/14	DATE SURVEYED: 7/10/14	
REVISED:	FILE NAME: 14-28	

\\ANADARKO\2014\2014 28 GOODIN WELLS CO T1NR65W\PLATS\GOODIN 38N-B6HZ.dwg, 7/30/2014 11:59:34 AM, lsa



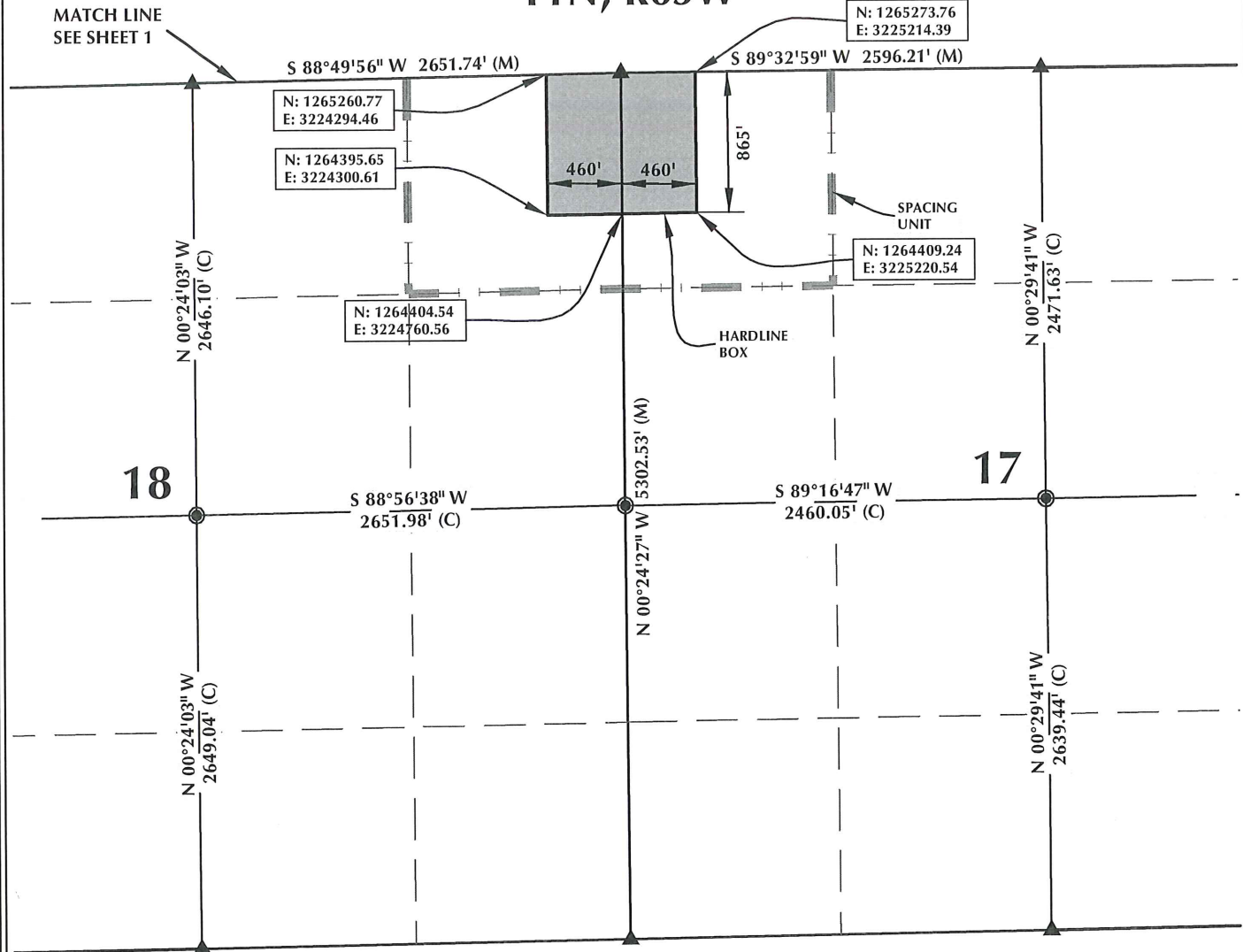
Benjamin J. Ruescher

NOTICE: ACCORDING TO COLORADO STATE LAW YOU MUST COMMENCE ANY LEGAL ACTION BASED UPON ANY DEFECT IN THIS SURVEY WITHIN THREE YEARS AFTER YOU FIRST DISCOVER SUCH DEFECT. IN NO EVENT MAY ANY ACTION BASED UPON ANY DEFECT IN THIS SURVEY BE COMMENCED MORE THAN TEN YEARS FROM THE DATE ON THE CERTIFICATION SHOWN HEREON.

-

DRAFTED BY: LMO	CHECKED BY: BJR	SHEET NO: 2 2 OF 2
DATE DRAFTED: 7/25/14	DATE SURVEYED: 7/10/14	
REVISED:	FILE NAME: 14-28	

GOODIN 38N-B6HZ T1N, R65W



HEEL LOCATION

NAD 83
N: 1,265,367.59'
E: 3,224,627.89'

LATITUDE= 40.059033°
LONGITUDE= -104.697492°

LATITUDE= 40°03'32.519\"
LONGITUDE= -104°41'50.970"

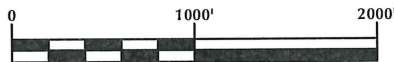
AVAILABLE FOOTAGE
7019'

BOTTOM HOLE LOCATION

NAD 83
N: 1,271,047.46'
E: 3,224,516.63'

LATITUDE= 40.074628°
LONGITUDE= -104.697706°

LATITUDE= 40°04'28.659\"
LONGITUDE= -104°41'51.740"



SCALE: 1" = 1000'

NOTES:

1. ▲ INDICATES FOUND SECTION CORNER
2. ● INDICATES CALCULATED CORNER
3. BASIS OF BEARING DERIVED FROM COLORADO COORDINATE SYSTEM 1983 NORTH ZONE UNLESS OTHERWISE NOTED.
4. DRAWING NORTHING / EASTING COORDINATES ARE BASED ON COLORADO COORDINATE SYSTEM 1983 NORTH ZONE UNLESS OTHERWISE NOTED.
5. COMBINED SCALE FACTOR: .99972680
6. THIS EXHIBIT DOES NOT REPRESENT A LAND SURVEY PLAT OR IMPROVEMENT SURVEY PLAT AS DEFINED BY C.R.S. 38-51-102 AND CANNOT BE RELIED UPON TO DETERMINE OWNERSHIP.

WELL PAD - GOODIN 37N-B6HZ

GOODIN 38N-B6HZ
SPACING UNIT EXHIBIT
100' FSL & 124' FEL SESE (HEEL)
LOCATED IN SECTION 7
500' FSL & 124' FEL SESE (BOTTOM)
LOCATED IN SECTION 6
T1N, R65W, 6TH P.M.
WELD COUNTY, COLORADO

**Kerr-McGee Oil &
Gas Onshore L.P.**
1099 18th Street
Denver, Colorado 80202



CONSULTING, LLC

SHERIDAN OFFICE 2155 North Main Street Sheridan, Wyoming 82801 Phone 307-674-0609
LOVELAND OFFICE 1635 Foxtrail Drive, Suite 204 Loveland, Colorado 80538 Phone 970-776-4331

DRAFTED BY: LMO	CHECKED BY: BJR	SHEET NO:
DATE DRAFTED: 7/25/14	DATE SURVEYED: 7/10/14	3
REVISED: 9/2/14	FILE NAME: 14-28	3 OF 3