



Company: Whiting Oil & Gas
Site: Horsetail 29G
Well: 2012B
Project: Weld County, Colorado (NAD 83)
Rig: Pioneer 54



ANNOTATIONS

MD	Inc	Azi	TVD	+N/-S	+E/-W	VSect	Departure	Annotation
1000.00	0.00	0.00	1000.00	0.00	0.00	0.00	0.00	KOP, 2.00°/100' Build
1754.52	15.09	159.11	1745.82	-92.29	35.23	-90.79	98.79	Hold 15.09° Inc, 159.11° Azm
4292.42	15.09	159.11	4196.22	-709.58	270.84	-698.02	759.51	Begin 2.00°/100' Drop
5046.94	0.00	0.00	4942.04	-801.87	306.07	-788.80	858.30	Begin 10.00°/100' Build
5946.94	90.00	0.00	5515.00	-228.91	306.07	-216.32	1431.26	Begin 90.00° Lateral
13719.54	90.00	0.00	5515.00	7543.68	306.07	7549.89	9203.85	PBHL

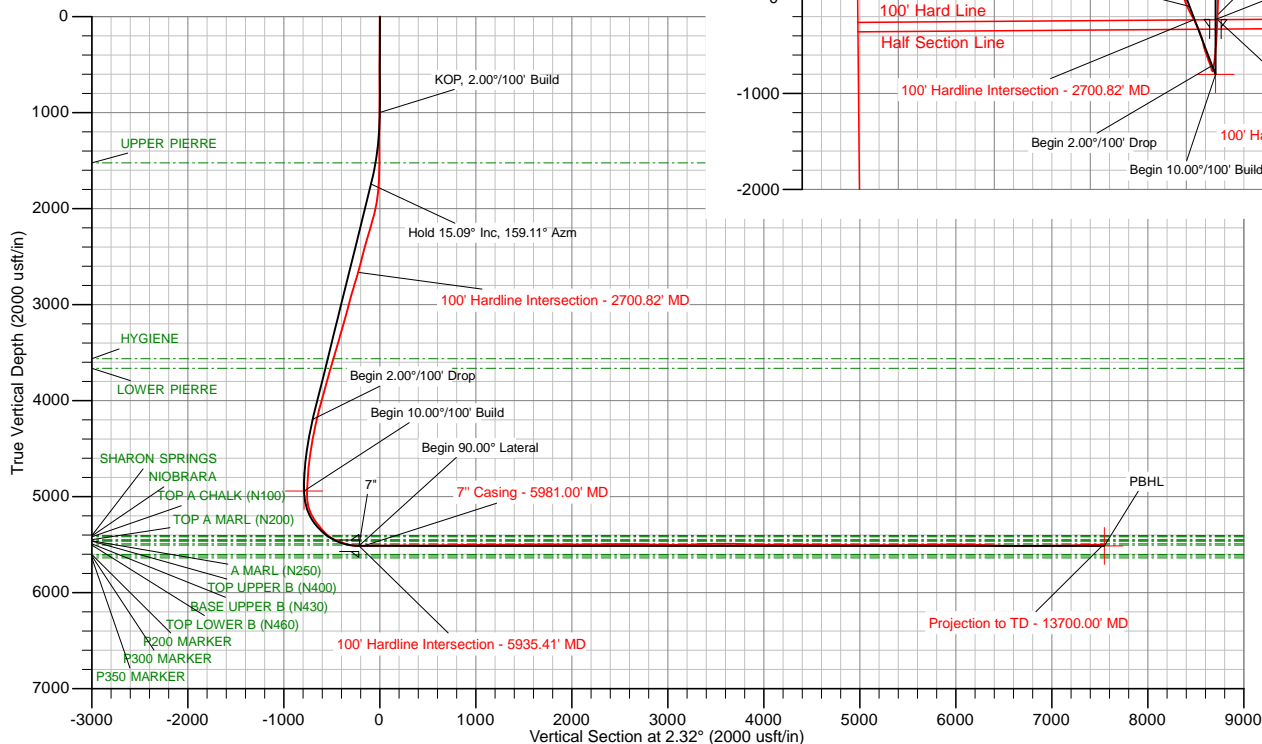
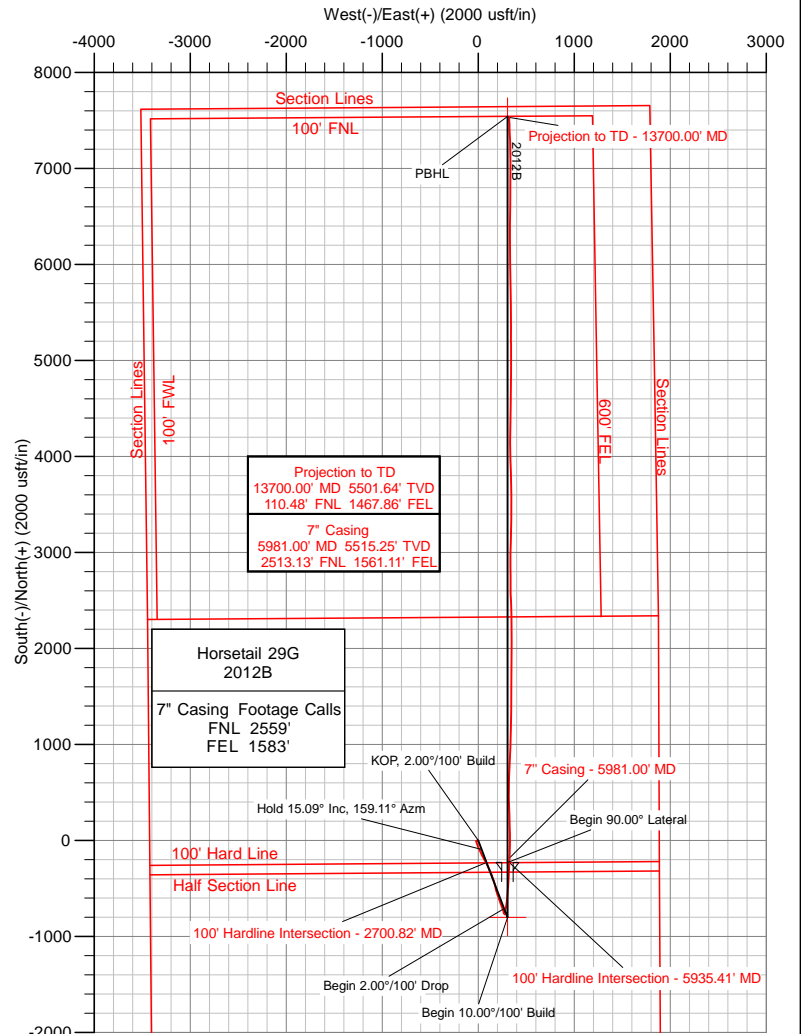


Azimuths to True North
Magnetic North: 7.90°

Magnetic Field
Strength: 53096.1snT
Dip Angle: 67.41°
Date: 10/20/2014
Model: WMM_2010

US State Plane 1983
Colorado Northern Zone

Created By: TNM
Date: 13:53, October 27 2014
Plan: Design #1





Whiting Oil & Gas

Weld County, Colorado (NAD 83)

Horsetail 29G

2012B

Wellbore #1

Survey: MS MWD

Standard Survey Report

27 October, 2014



Company:	Whiting Oil & Gas	Local Co-ordinate Reference:	Well 2012B
Project:	Weld County, Colorado (NAD 83)	TVD Reference:	WELL @ 4713.10usft (Pioneer 54)
Site:	Horsetail 29G	MD Reference:	WELL @ 4713.10usft (Pioneer 54)
Well:	2012B	North Reference:	True
Wellbore:	Wellbore #1	Survey Calculation Method:	Minimum Curvature
Design:	Surveys	Database:	Conroe Server Database

Project	Weld County, Colorado (NAD 83)		
Map System:	US State Plane 1983	System Datum:	Mean Sea Level
Geo Datum:	North American Datum 1983		
Map Zone:	Colorado Northern Zone		

Site	Horsetail 29G		
Site Position:		Northing:	0.00 usft
From:	Map	Easting:	0.00 usft
Position Uncertainty:	0.00 usft	Slot Radius:	13-3/16 "
		Latitude:	36° 7' 5.969 N
		Longitude:	115° 39' 12.952 W
		Grid Convergence:	-6.56 °

Wellbore	Wellbore #1				
Magnetics	Model Name	Sample Date	Declination (°)	Dip Angle (°)	Field Strength (nT)
	WMM_2010	10/20/14	7.90	67.41	53,096

Design	Surveys				
Audit Notes:					
Version:	1.0	Phase:	ACTUAL	Tie On Depth:	0.00
Vertical Section:	Depth From (TVD) (usft)	+N/-S (usft)	+E/-W (usft)	Direction (°)	
	0.00	0.00	0.00	2.32	

Survey Program	Date	10/27/14			
From (usft)	To (usft)	Survey (Wellbore)	Tool Name	Description	
508.00	13,700.00	MS MWD (Wellbore #1)	MWD	MWD - Standard	

Survey									
Measured Depth (usft)	Inclination (°)	Azimuth (°)	Vertical Depth (usft)	+N/-S (usft)	+E/-W (usft)	Vertical Section (usft)	Dogleg Rate (°/100usft)	Build Rate (°/100usft)	Turn Rate (°/100usft)
0.00	0.00	0.00	0.00	0.00	0.00	0.00	0.00	0.00	0.00
508.00	0.20	241.60	508.00	-0.42	-0.78	-0.45	0.04	0.04	0.00
973.00	1.50	266.00	972.94	-1.23	-7.57	-1.54	0.28	0.28	5.25
1,160.00	1.00	253.40	1,159.89	-1.87	-11.57	-2.34	0.30	-0.27	-6.74
1,607.00	1.10	241.20	1,606.82	-5.05	-19.07	-5.82	0.05	0.02	-2.73
1,659.00	1.00	234.80	1,658.81	-5.55	-19.88	-6.35	0.30	-0.19	-12.31
1,720.00	3.40	173.80	1,719.77	-7.66	-20.12	-8.47	4.99	3.93	-100.00
1,813.00	6.10	162.10	1,812.44	-15.10	-18.30	-15.83	3.07	2.90	-12.58
1,905.00	8.40	158.70	1,903.70	-26.02	-14.36	-26.58	2.54	2.50	-3.70
1,998.00	12.70	160.70	1,995.11	-42.00	-8.51	-42.31	4.64	4.62	2.15
2,091.00	16.50	162.90	2,085.09	-64.28	-1.24	-64.28	4.13	4.09	2.37
2,183.00	18.60	156.80	2,172.81	-90.26	8.38	-89.85	3.03	2.28	-6.63
2,276.00	18.10	153.60	2,261.08	-116.83	20.65	-115.90	1.21	-0.54	-3.44
2,368.00	17.70	151.60	2,348.63	-141.94	33.65	-140.46	0.80	-0.43	-2.17
2,461.00	17.30	149.80	2,437.32	-166.32	47.33	-164.27	0.72	-0.43	-1.94



Company:	Whiting Oil & Gas	Local Co-ordinate Reference:	Well 2012B
Project:	Weld County, Colorado (NAD 83)	TVD Reference:	WELL @ 4713.10usft (Pioneer 54)
Site:	Horsetail 29G	MD Reference:	WELL @ 4713.10usft (Pioneer 54)
Well:	2012B	North Reference:	True
Wellbore:	Wellbore #1	Survey Calculation Method:	Minimum Curvature
Design:	Surveys	Database:	Conroe Server Database

Survey

Measured Depth (usft)	Inclination (°)	Azimuth (°)	Vertical Depth (usft)	+N/-S (usft)	+E/-W (usft)	Vertical Section (usft)	Dogleg Rate (°/100usft)	Build Rate (°/100usft)	Turn Rate (°/100usft)
2,553.00	17.10	147.60	2,525.21	-189.57	61.46	-186.92	0.74	-0.22	-2.39
2,647.00	18.70	156.10	2,614.67	-215.02	74.98	-211.81	3.25	1.70	9.04
2,700.82	18.35	155.07	2,665.70	-230.59	82.04	-227.08	0.89	-0.65	-1.91
100' Hardline Intersection - 2700.82' MD									
2,740.00	18.10	154.30	2,702.92	-241.67	87.28	-237.93	0.89	-0.64	-1.97
2,833.00	17.30	151.20	2,791.52	-266.80	100.21	-262.53	1.33	-0.86	-3.33
2,926.00	18.60	160.00	2,880.01	-292.86	111.95	-288.09	3.23	1.40	9.46
3,019.00	17.20	155.60	2,968.51	-319.32	122.70	-314.10	2.09	-1.51	-4.73
3,113.00	16.10	151.60	3,058.57	-343.45	134.64	-337.72	1.69	-1.17	-4.26
3,206.00	17.40	161.60	3,147.64	-367.99	145.17	-361.81	3.39	1.40	10.75
3,299.00	17.20	162.00	3,236.43	-394.26	153.80	-387.71	0.25	-0.22	0.43
3,392.00	16.40	157.50	3,325.46	-419.47	163.08	-412.53	1.64	-0.86	-4.84
3,485.00	17.70	169.40	3,414.40	-445.51	170.71	-438.23	4.00	1.40	12.80
3,579.00	17.40	167.90	3,504.03	-473.30	176.28	-465.77	0.58	-0.32	-1.60
3,672.00	16.60	166.30	3,592.96	-499.80	182.34	-492.01	1.00	-0.86	-1.72
3,765.00	15.40	164.30	3,682.36	-524.59	188.83	-516.52	1.42	-1.29	-2.15
3,858.00	17.00	161.50	3,771.67	-549.38	196.49	-540.97	1.91	1.72	-3.01
3,951.00	16.80	158.60	3,860.65	-574.78	205.70	-565.99	0.93	-0.22	-3.12
4,044.00	16.70	163.60	3,949.71	-600.12	214.38	-590.95	1.55	-0.11	5.38
4,137.00	16.10	160.70	4,038.93	-625.11	222.42	-615.59	1.09	-0.65	-3.12
4,230.00	15.70	159.20	4,128.37	-649.04	231.15	-639.15	0.62	-0.43	-1.61
4,323.00	14.60	156.80	4,218.14	-671.58	240.23	-661.30	1.36	-1.18	-2.58
4,417.00	12.00	163.20	4,309.61	-691.83	247.73	-681.23	3.17	-2.77	6.81
4,510.00	10.30	160.70	4,400.85	-708.93	253.27	-698.10	1.90	-1.83	-2.69
4,603.00	9.00	154.60	4,492.54	-723.35	259.14	-712.27	1.78	-1.40	-6.56
4,697.00	9.10	164.70	4,585.37	-737.16	264.25	-725.86	1.69	0.11	10.74
4,789.00	7.00	173.70	4,676.47	-749.75	266.79	-738.34	2.66	-2.28	9.78
4,882.00	4.10	155.00	4,769.03	-758.40	268.82	-746.90	3.64	-3.12	-20.11
4,975.00	4.90	140.00	4,861.74	-764.46	272.77	-752.79	1.52	0.86	-16.13
5,069.00	0.80	143.30	4,955.61	-768.06	275.75	-756.27	4.36	-4.36	3.51
5,162.00	3.10	10.60	5,048.57	-766.11	276.60	-754.28	3.97	2.47	-142.69
5,193.00	10.90	6.80	5,079.31	-762.37	277.10	-750.53	25.19	25.16	-12.26
5,224.00	17.10	8.50	5,109.38	-754.94	278.12	-743.07	20.04	20.00	5.48
5,255.00	22.20	11.50	5,138.56	-744.69	279.96	-732.75	16.77	16.45	9.68
5,286.00	26.60	11.00	5,166.79	-732.13	282.46	-720.10	14.21	14.19	-1.61
5,318.00	28.90	10.70	5,195.10	-717.50	285.26	-705.36	7.20	7.19	-0.94
5,349.00	30.80	10.60	5,221.99	-702.34	288.11	-690.10	6.13	6.13	-0.32
5,380.00	33.00	10.60	5,248.31	-686.23	291.13	-673.89	7.10	7.10	0.00
5,411.00	32.90	9.90	5,274.32	-669.64	294.13	-657.19	1.27	-0.32	-2.26
5,442.00	35.50	8.00	5,299.96	-652.43	296.83	-639.88	9.07	8.39	-6.13
5,473.00	40.60	5.90	5,324.36	-633.47	299.12	-620.84	16.97	16.45	-6.77
5,504.00	41.80	6.10	5,347.69	-613.17	301.25	-600.47	3.89	3.87	0.65
5,535.00	43.60	6.10	5,370.47	-592.26	303.49	-579.49	5.81	5.81	0.00
5,566.00	50.70	4.90	5,391.54	-569.65	305.65	-556.81	23.08	22.90	-3.87



Company:	Whiting Oil & Gas	Local Co-ordinate Reference:	Well 2012B
Project:	Weld County, Colorado (NAD 83)	TVD Reference:	WELL @ 4713.10usft (Pioneer 54)
Site:	Horsetail 29G	MD Reference:	WELL @ 4713.10usft (Pioneer 54)
Well:	2012B	North Reference:	True
Wellbore:	Wellbore #1	Survey Calculation Method:	Minimum Curvature
Design:	Surveys	Database:	Conroe Server Database

Survey										
Measured Depth (usft)	Inclination (°)	Azimuth (°)	Vertical Depth (usft)	+N/-S (usft)	+E/-W (usft)	Vertical Section (usft)	Dogleg Rate (°/100usft)	Build Rate (°/100usft)	Turn Rate (°/100usft)	
5,597.00	53.80	3.80	5,410.51	-545.22	307.50	-532.32	10.39	10.00	-3.55	
5,628.00	56.70	3.80	5,428.18	-519.80	309.19	-506.86	9.35	9.35	0.00	
5,659.00	61.90	4.10	5,444.00	-493.22	311.03	-480.23	16.79	16.77	0.97	
5,690.00	66.40	4.30	5,457.52	-465.40	313.07	-452.35	14.53	14.52	0.65	
5,721.00	69.40	3.60	5,469.18	-436.75	315.05	-423.64	9.90	9.68	-2.26	
5,752.00	71.10	3.20	5,479.65	-407.63	316.78	-394.47	5.62	5.48	-1.29	
5,783.00	71.90	2.60	5,489.49	-378.27	318.27	-365.08	3.17	2.58	-1.94	
5,814.00	75.80	2.30	5,498.11	-348.53	319.54	-335.31	12.61	12.58	-0.97	
5,845.00	79.30	2.50	5,504.79	-318.29	320.81	-305.04	11.31	11.29	0.65	
5,876.00	81.20	3.20	5,510.04	-287.77	322.32	-274.49	6.52	6.13	2.26	
5,908.00	84.40	2.90	5,514.05	-256.08	324.01	-242.75	10.04	10.00	-0.94	
5,935.41	89.06	2.72	5,515.62	-228.75	325.35	-215.39	17.01	17.00	-0.67	
100' Hardline Intersection - 5935.41' MD										
5,938.00	89.50	2.70	5,515.65	-226.16	325.48	-212.80	17.01	17.00	-0.66	
5,952.00	90.70	2.90	5,515.62	-212.18	326.16	-198.80	8.69	8.57	1.43	
5,981.00	90.77	2.51	5,515.25	-183.22	327.53	-169.81	1.37	0.22	-1.35	
7" Casing - 5981.00' MD										
6,041.00	90.90	1.70	5,514.38	-123.26	329.73	-109.81	1.37	0.22	-1.35	
6,134.00	90.90	0.10	5,512.92	-30.29	331.19	-16.86	1.72	0.00	-1.72	
6,227.00	90.30	359.20	5,511.95	62.70	330.62	76.04	1.16	-0.65	-0.97	
6,320.00	90.90	358.90	5,510.97	155.69	329.08	168.88	0.72	0.65	-0.32	
6,413.00	90.90	358.30	5,509.51	248.65	326.81	261.67	0.65	0.00	-0.65	
6,506.00	90.30	356.90	5,508.54	341.56	322.92	354.35	1.64	-0.65	-1.51	
6,599.00	90.00	359.90	5,508.30	434.51	320.32	447.12	3.24	-0.32	3.23	
6,693.00	89.80	359.60	5,508.46	528.51	319.91	541.02	0.38	-0.21	-0.32	
6,786.00	90.60	2.00	5,508.13	621.49	321.21	633.98	2.72	0.86	2.58	
6,879.00	90.80	2.90	5,507.00	714.40	325.18	726.98	0.99	0.22	0.97	
6,972.00	90.60	2.50	5,505.86	807.29	329.56	819.97	0.48	-0.22	-0.43	
7,065.00	90.40	1.90	5,505.05	900.21	333.13	912.96	0.68	-0.22	-0.65	
7,158.00	90.50	1.90	5,504.32	993.16	336.22	1,005.96	0.11	0.11	0.00	
7,252.00	90.20	1.60	5,503.75	1,087.11	339.09	1,099.95	0.45	-0.32	-0.32	
7,345.00	90.10	1.20	5,503.50	1,180.09	341.36	1,192.94	0.44	-0.11	-0.43	
7,438.00	89.80	0.80	5,503.58	1,273.07	342.98	1,285.91	0.54	-0.32	-0.43	
7,531.00	89.30	0.60	5,504.31	1,366.06	344.12	1,378.87	0.58	-0.54	-0.22	
7,625.00	91.20	0.40	5,503.90	1,460.05	344.94	1,472.82	2.03	2.02	-0.21	
7,718.00	91.20	0.50	5,501.96	1,553.03	345.67	1,565.75	0.11	0.00	0.11	
7,811.00	91.30	0.00	5,499.93	1,646.01	346.07	1,658.67	0.55	0.11	-0.54	
7,904.00	90.40	1.00	5,498.55	1,738.99	346.89	1,751.61	1.45	-0.97	1.08	
7,997.00	89.70	0.40	5,498.47	1,831.98	348.02	1,844.57	0.99	-0.75	-0.65	
8,090.00	89.50	0.30	5,499.12	1,924.98	348.59	1,937.51	0.24	-0.22	-0.11	
8,184.00	89.60	1.20	5,499.85	2,018.97	349.82	2,031.47	0.96	0.11	0.96	
8,277.00	89.40	359.10	5,500.67	2,111.96	350.06	2,124.40	2.27	-0.22	-2.26	
8,370.00	90.90	359.10	5,500.42	2,204.94	348.60	2,217.25	1.61	1.61	0.00	
8,463.00	91.00	358.80	5,498.88	2,297.91	346.90	2,310.07	0.34	0.11	-0.32	



Company:	Whiting Oil & Gas	Local Co-ordinate Reference:	Well 2012B
Project:	Weld County, Colorado (NAD 83)	TVD Reference:	WELL @ 4713.10usft (Pioneer 54)
Site:	Horsetail 29G	MD Reference:	WELL @ 4713.10usft (Pioneer 54)
Well:	2012B	North Reference:	True
Wellbore:	Wellbore #1	Survey Calculation Method:	Minimum Curvature
Design:	Surveys	Database:	Conroe Server Database

Survey									
Measured Depth (usft)	Inclination (°)	Azimuth (°)	Vertical Depth (usft)	+N/-S (usft)	+E/-W (usft)	Vertical Section (usft)	Dogleg Rate (°/100usft)	Build Rate (°/100usft)	Turn Rate (°/100usft)
8,555.00	90.40	358.80	5,497.76	2,389.89	344.97	2,401.89	0.65	-0.65	0.00
8,647.00	90.20	358.20	5,497.27	2,481.85	342.56	2,493.69	0.69	-0.22	-0.65
8,738.00	90.10	357.80	5,497.04	2,572.80	339.39	2,584.43	0.45	-0.11	-0.44
8,831.00	89.80	0.70	5,497.12	2,665.78	338.17	2,677.28	3.13	-0.32	3.12
8,923.00	88.80	359.60	5,498.24	2,757.77	338.41	2,769.21	1.62	-1.09	-1.20
9,016.00	88.40	359.10	5,500.51	2,850.74	337.36	2,862.06	0.69	-0.43	-0.54
9,108.00	88.80	0.00	5,502.76	2,942.70	336.64	2,953.92	1.07	0.43	0.98
9,200.00	89.40	1.30	5,504.21	3,034.68	337.68	3,045.87	1.56	0.65	1.41
9,293.00	89.80	1.70	5,504.86	3,127.65	340.11	3,138.85	0.61	0.43	0.43
9,386.00	92.70	1.20	5,502.83	3,220.59	342.47	3,231.81	3.16	3.12	-0.54
9,478.00	93.40	1.00	5,497.93	3,312.44	344.23	3,323.66	0.79	0.76	-0.22
9,571.00	90.90	0.40	5,494.44	3,405.36	345.37	3,416.55	2.76	-2.69	-0.65
9,663.00	90.40	0.50	5,493.40	3,497.35	346.09	3,508.49	0.55	-0.54	0.11
9,756.00	90.90	359.70	5,492.35	3,590.34	346.25	3,601.42	1.01	0.54	-0.86
9,849.00	88.20	358.80	5,493.08	3,683.32	345.03	3,694.27	3.06	-2.90	-0.97
9,941.00	88.00	358.50	5,496.13	3,775.25	342.87	3,786.03	0.39	-0.22	-0.33
10,034.00	87.80	357.70	5,499.53	3,868.13	339.79	3,878.72	0.89	-0.22	-0.86
10,126.00	89.10	358.30	5,502.02	3,960.04	336.58	3,970.42	1.56	1.41	0.65
10,218.00	89.40	358.60	5,503.23	4,052.00	334.09	4,062.20	0.46	0.33	0.33
10,311.00	90.40	0.10	5,503.39	4,144.99	333.03	4,155.07	1.94	1.08	1.61
10,403.00	91.70	1.10	5,501.70	4,236.97	334.00	4,247.01	1.78	1.41	1.09
10,495.00	89.80	1.90	5,500.50	4,328.92	336.40	4,338.99	2.24	-2.07	0.87
10,587.00	89.30	0.80	5,501.22	4,420.89	338.57	4,430.97	1.31	-0.54	-1.20
10,680.00	89.20	0.40	5,502.44	4,513.88	339.55	4,523.92	0.44	-0.11	-0.43
10,773.00	89.10	0.50	5,503.82	4,606.86	340.28	4,616.86	0.15	-0.11	0.11
10,865.00	88.40	359.80	5,505.83	4,698.84	340.52	4,708.77	1.08	-0.76	-0.76
10,957.00	90.20	1.50	5,506.95	4,790.82	341.56	4,800.72	2.69	1.96	1.85
11,049.00	90.30	0.80	5,506.55	4,882.80	343.41	4,892.70	0.77	0.11	-0.76
11,141.00	89.90	359.70	5,506.39	4,974.80	343.81	4,984.64	1.27	-0.43	-1.20
11,234.00	89.30	359.30	5,507.04	5,067.79	343.00	5,077.52	0.78	-0.65	-0.43
11,326.00	90.10	359.60	5,507.52	5,159.79	342.11	5,169.41	0.93	0.87	0.33
11,419.00	90.20	0.60	5,507.27	5,252.78	342.28	5,262.33	1.08	0.11	1.08
11,511.00	89.80	359.80	5,507.27	5,344.78	342.60	5,354.27	0.97	-0.43	-0.87
11,604.00	89.60	358.90	5,507.76	5,437.77	341.54	5,447.14	0.99	-0.22	-0.97
11,696.00	91.10	0.00	5,507.20	5,529.76	340.66	5,539.02	2.02	1.63	1.20
11,789.00	91.20	359.40	5,505.33	5,622.74	340.17	5,631.91	0.65	0.11	-0.65
11,882.00	91.10	359.10	5,503.47	5,715.72	338.95	5,724.75	0.34	-0.11	-0.32
11,974.00	91.40	358.90	5,501.46	5,807.68	337.35	5,816.58	0.39	0.33	-0.22
12,067.00	91.90	359.10	5,498.78	5,900.63	335.73	5,909.38	0.58	0.54	0.22
12,160.00	88.70	359.60	5,498.29	5,993.61	334.67	6,002.24	3.48	-3.44	0.54
12,252.00	88.50	359.40	5,500.54	6,085.58	333.87	6,094.10	0.31	-0.22	-0.22
12,345.00	88.70	359.10	5,502.81	6,178.54	332.65	6,186.94	0.39	0.22	-0.32
12,438.00	88.40	359.30	5,505.17	6,271.50	331.35	6,279.78	0.39	-0.32	0.22



Company:	Whiting Oil & Gas	Local Co-ordinate Reference:	Well 2012B
Project:	Weld County, Colorado (NAD 83)	TVD Reference:	WELL @ 4713.10usft (Pioneer 54)
Site:	Horsetail 29G	MD Reference:	WELL @ 4713.10usft (Pioneer 54)
Well:	2012B	North Reference:	True
Wellbore:	Wellbore #1	Survey Calculation Method:	Minimum Curvature
Design:	Surveys	Database:	Conroe Server Database

Survey

Measured Depth (usft)	Inclination (°)	Azimuth (°)	Vertical Depth (usft)	+N/-S (usft)	+E/-W (usft)	Vertical Section (usft)	Dogleg Rate (°/100usft)	Build Rate (°/100usft)	Turn Rate (°/100usft)
12,531.00	87.20	359.60	5,508.74	6,364.43	330.46	6,372.59	1.33	-1.29	0.32
12,623.00	88.30	1.00	5,512.35	6,456.35	330.94	6,464.46	1.93	1.20	1.52
12,715.00	89.60	1.30	5,514.04	6,548.32	332.79	6,556.42	1.45	1.41	0.33
12,808.00	90.20	1.00	5,514.20	6,641.30	334.66	6,649.40	0.72	0.65	-0.32
12,899.00	88.50	0.60	5,515.23	6,732.28	335.93	6,740.36	1.92	-1.87	-0.44
12,990.00	91.30	0.50	5,515.39	6,823.26	336.80	6,831.31	3.08	3.08	-0.11
13,052.00	91.40	0.10	5,513.93	6,885.25	337.13	6,893.25	0.66	0.16	-0.65
13,083.00	91.20	0.10	5,513.23	6,916.24	337.18	6,924.22	0.65	-0.65	0.00
13,176.00	90.50	359.60	5,511.85	7,009.23	336.94	7,017.12	0.92	-0.75	-0.54
13,268.00	89.80	358.80	5,511.61	7,101.22	335.65	7,108.98	1.16	-0.76	-0.87
13,315.00	92.40	359.60	5,510.70	7,148.20	335.00	7,155.90	5.79	5.53	1.70
13,361.00	91.90	359.30	5,508.98	7,194.16	334.55	7,201.81	1.27	-1.09	-0.65
13,453.00	91.20	358.40	5,506.49	7,286.11	332.71	7,293.61	1.24	-0.76	-0.98
13,544.00	91.00	358.10	5,504.74	7,377.05	329.93	7,384.36	0.40	-0.22	-0.33
13,637.00	91.20	357.40	5,502.96	7,469.96	326.28	7,477.05	0.78	0.22	-0.75
13,650.00	91.20	357.40	5,502.68	7,482.95	325.69	7,490.00	0.00	0.00	0.00
13,700.00	91.20	357.40	5,501.64	7,532.88	323.42	7,539.80	0.00	0.00	0.00
Projection to TD - 13700.00' MD									

Survey Annotations

Measured Depth (usft)	Vertical Depth (usft)	Local Coordinates		Comment
		+N/-S (usft)	+E/-W (usft)	
2,700.82	2,665.70	-230.59	82.04	100' Hardline Intersection - 2700.82' MD
5,935.41	5,515.62	-228.75	325.35	100' Hardline Intersection - 5935.41' MD
5,981.00	5,515.25	-183.22	327.53	7" Casing - 5981.00' MD
13,700.00	5,501.64	7,532.88	323.42	Projection to TD - 13700.00' MD