

# Great Western Operating Company, LLC

**Location** Colorado  
**Field** Wattenberg  
**Installation** Willow Bend

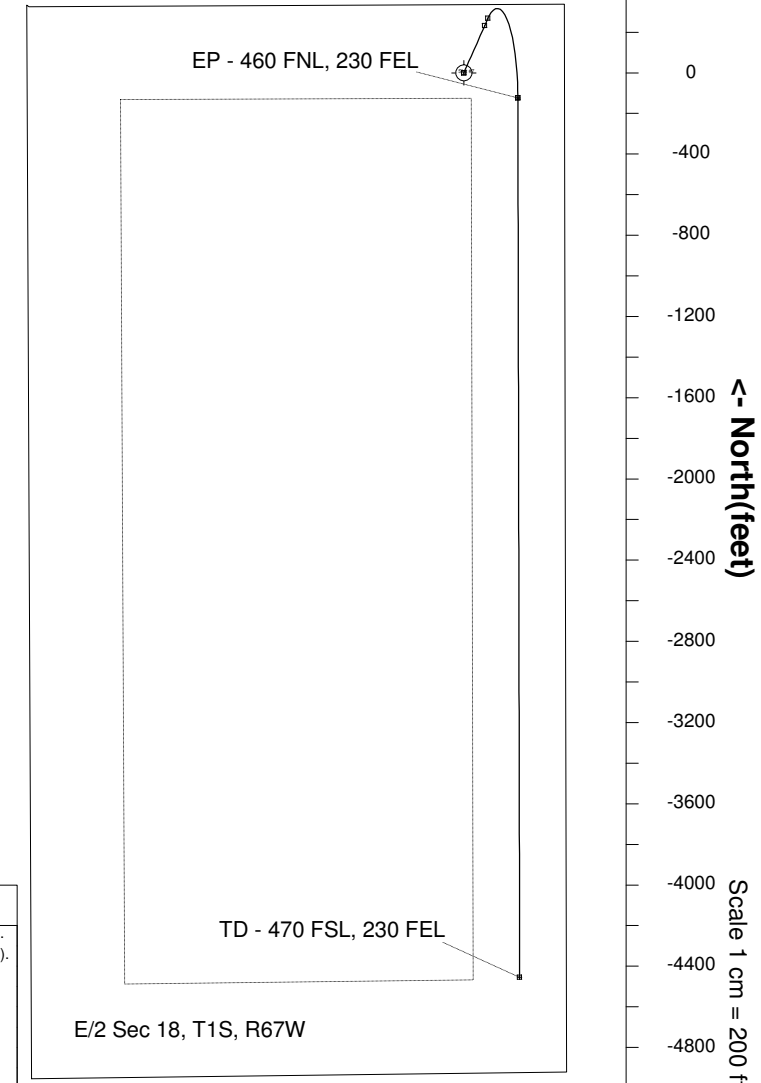
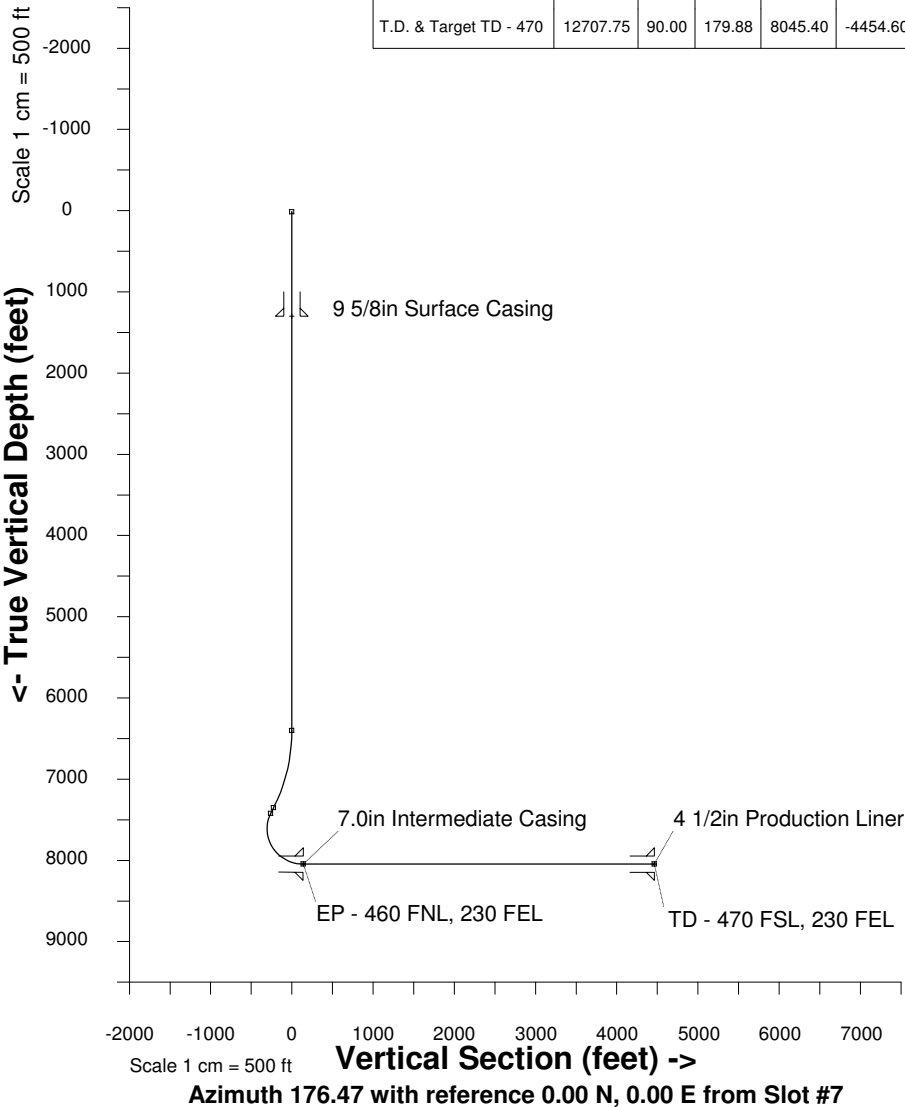
**Slot** Slot #7  
**Well** Willow Bend LD 18-361HC  
**Wellbore** Willow Bend LD 18-361HC (PWB)

## WELL PROFILE DATA

Point	MD	Inc	Azi	TVD	North	East	deg/100ft	V. Sect
Tie on	16.20	0.00	0.00	16.20	0.00	0.00	0.00	0.00
KOP	6400.00	0.00	0.00	6400.00	0.00	0.00	0.00	0.00
End of Build	7396.19	29.89	23.93	7351.63	232.14	103.03	3.00	-225.34
End of Hold	7476.22	29.89	23.93	7421.02	268.58	119.20	0.00	-260.73
Target EP - 460 FNL, 2	8376.73	90.00	179.88	8045.40	-123.59	266.24	13.00	139.76
T.D. & Target TD - 470	12707.75	90.00	179.88	8045.40	-4454.60	275.08	0.00	4463.09

East (feet) ->

-2800 -2400 -2000 -1600 -1200 -800 -400 -0 400 800



Created by admin  
Date plotted 3-Nov-2014  
Plot reference is Willow Bend LD 18-361HC (PWB).  
Ref wellpath is Willow Bend LD 18-361HC (PWP#1).  
Coordinates are in feet reference Slot #7.  
True Vertical Depths are reference Rig Datum.  
Measured Depths are reference Rig Datum.  
Rig Datum: Planned Datum #1  
Rig Datum to Mean Sea Level: 5247.60 ft.  
Plot North is aligned to GRID North.