



**Cement Bond Log  
Gamma Ray, CCL**

Pioneer Energy Services

Company Augustus Energy Resources

Well Haven Hill 14-15  
Field Wild Cat  
County Yuma State Co.

Company **Augustus Energy Resources**  
Well **Haven Hill 14-15**  
Field **Wild Cat**  
County **Yuma** State **Co.**

Location: API # : 05-125-12126 Other Services  
SEC 15 TWP 4N RGE 47W  
SWSW 1S 4N 47W  
Permanent Datum GROUND LEVEL Elevation 3960  
Log Measured From KELLY BUSHING  
Drilling Measured From KELLY BUSHING  
K.B. 3966  
D.F. 3965  
G.L. 3960

Date of Service	11-10-14		
Run Number	one		
Depth Driller or PBTD	3011		
Depth Logger	2930		
Bottom Log Interval	2926		
Top Log Interval	SURFACE		
Open Hole Size	N/A		
Type Fluid	water		
Fluid Level	SURFACE		
Fluid Density	n/a		
Max. Recorded Temperature	n/a		
Max. Wellhead Pressure	0		
Wellhead Connection	4.5 eue		
Estimated Cement Top	SURFACE		
Unit Number	41		
Wireline Size	9/32		
Location	Fl. Morgan		
Recorded By	Cory Burns		
Witnessed By			
Tubing Record	Size	WM/Ft	Top Bottom
Surface Casing	7"	20#	SURFACE 450
Production Casing	4.5	10.5#	SURFACE 2930
Liner Record			

<<< Fold Here >>>

All interpretations are opinions based on inferences from electrical or other measurements and Pioneer Wireline Services cannot and does not guarantee the accuracy or correctness of any interpretation, and Pioneer Wireline Services will not, except in the case of gross or willful negligence on our part, be liable or responsible for any loss, costs, damages, or expenses incurred or sustained by anyone resulting from any interpretation made by any of our officers, agents or employees. These interpretations are also subject to Pioneer Wireline Services's general terms and conditions set out in our current Price Schedule.

Comments

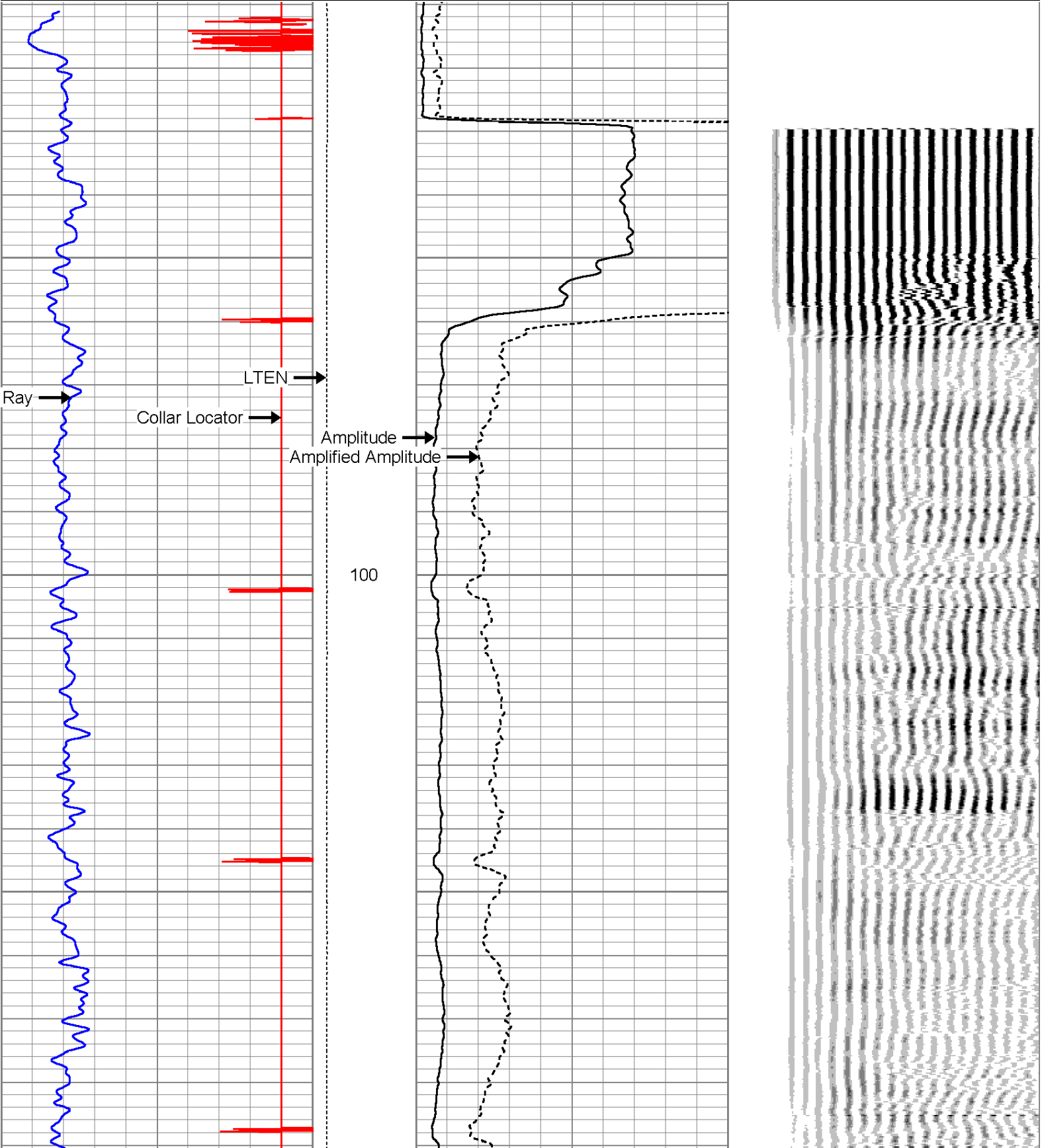
N/A DENOTES NOT AVAILABLE OR NON-APPLICABLE.

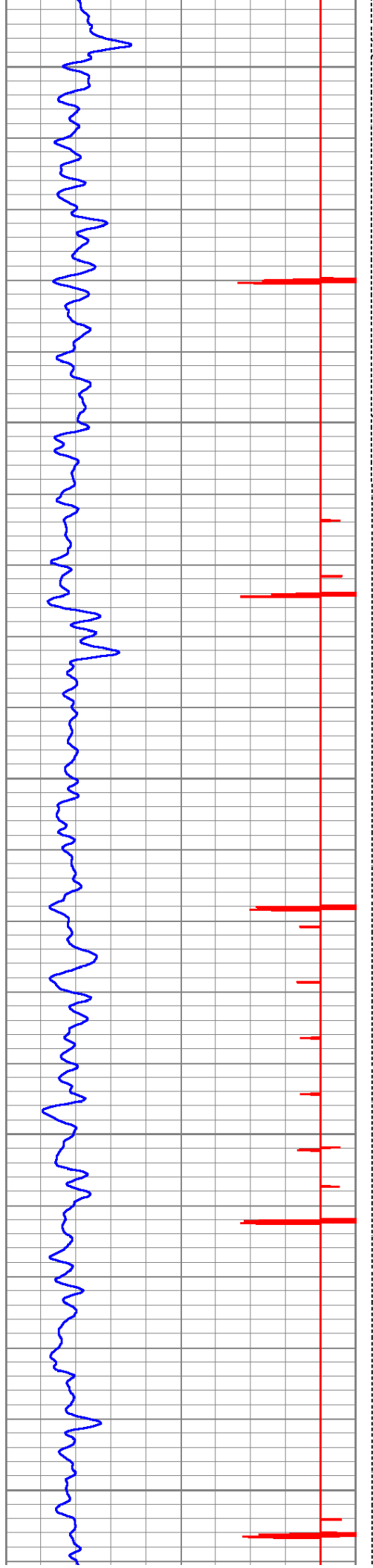
THANK YOU FOR USING PIONEER WIRELINE SERVICES

Your Pioneer Wireline Services Crew	Tool Data - Services	Serial Number
Engineer: Operator: Operator: Operator:		

Database File: haven hill 14-15.db  
Dataset Pathname: pass9  
Presentation Format: cbl\_dr  
Dataset Creation: Mon Nov 10 09:27:00 2014 by Log 7.0 B1  
Charted by: Depth in Feet scaled 1:240

9	Collar Locator	-1	LTEN	0	Amplified Amplitude (mV)	30	200	Variable Density	1200
0	Gamma Ray (GAPI)	200	0 (lb)1000	0	Amplitude (mV)	100			

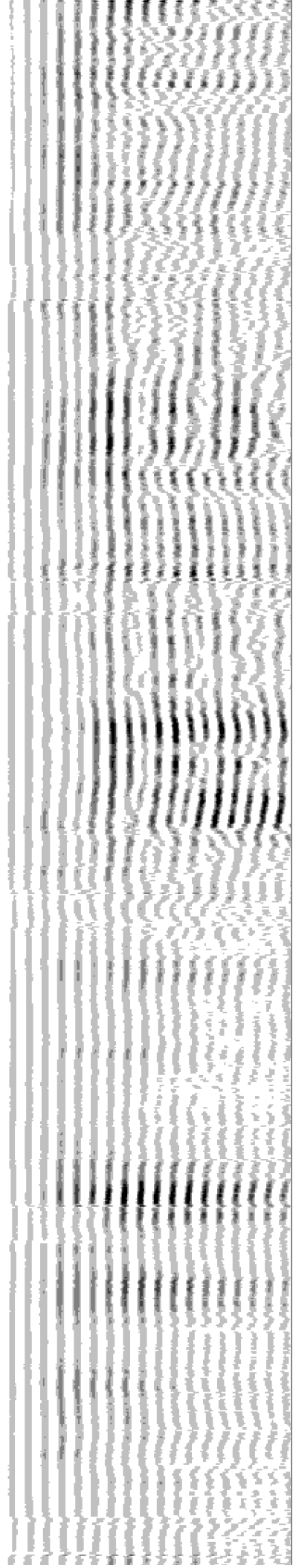
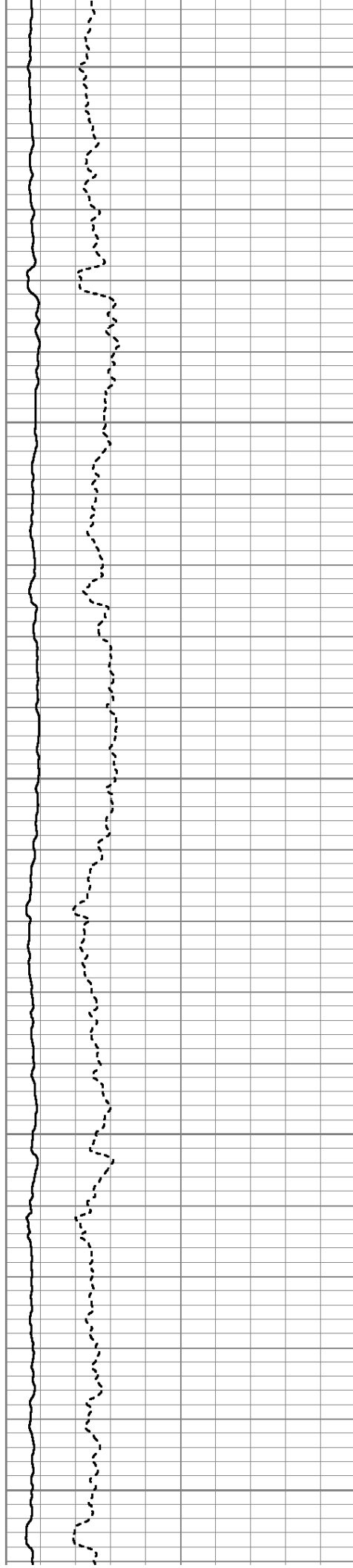


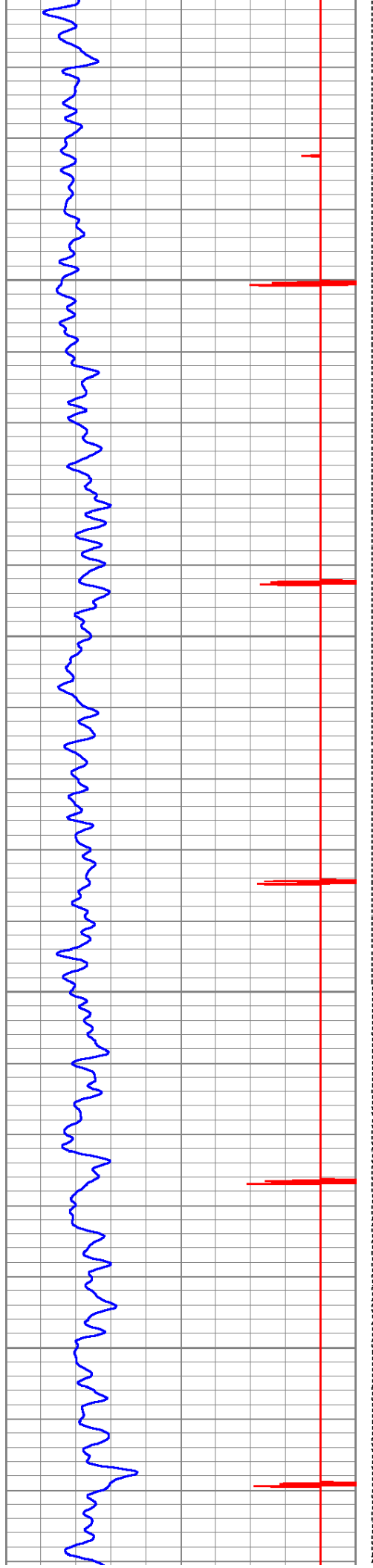


200

300

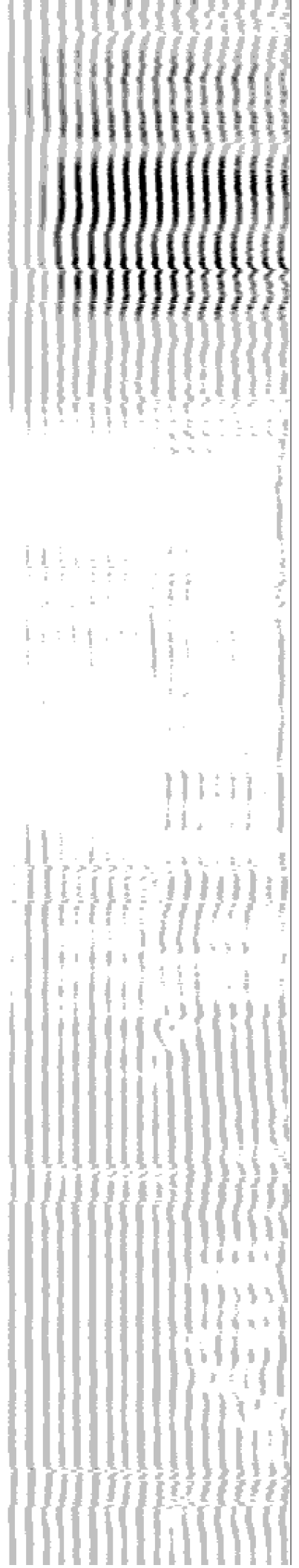
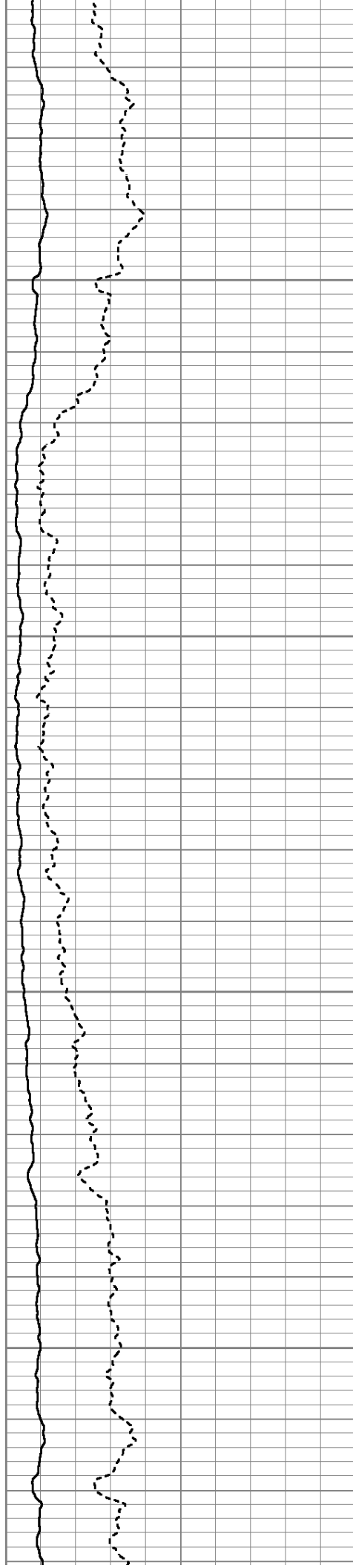
400

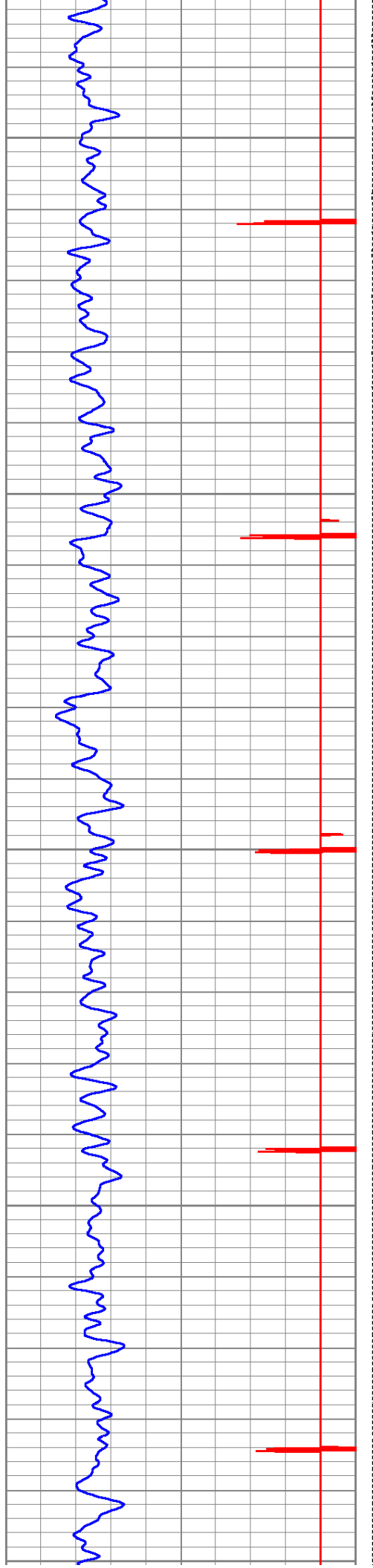




500

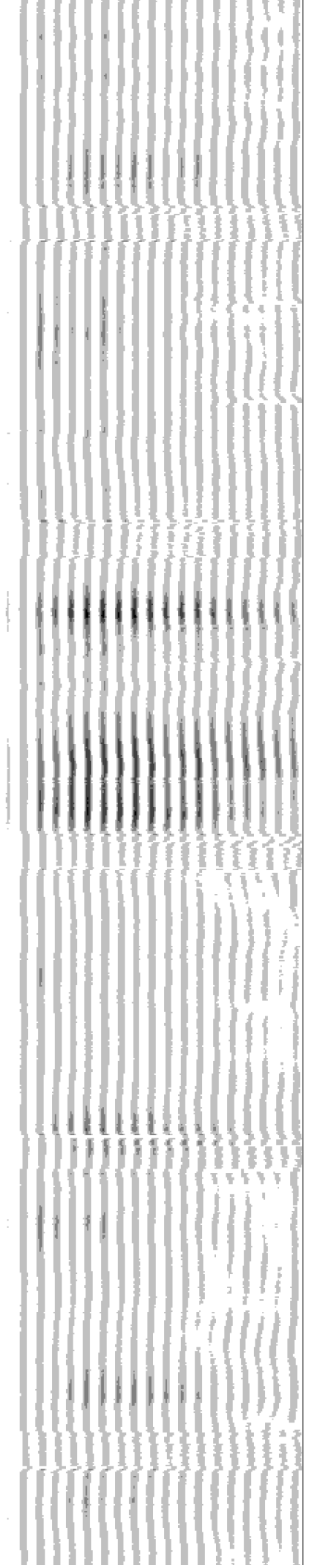
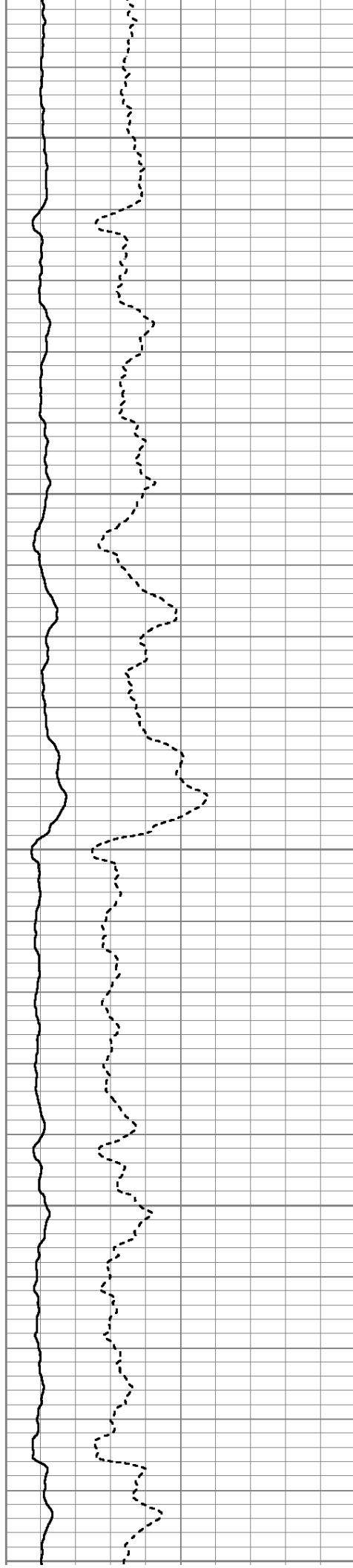
600

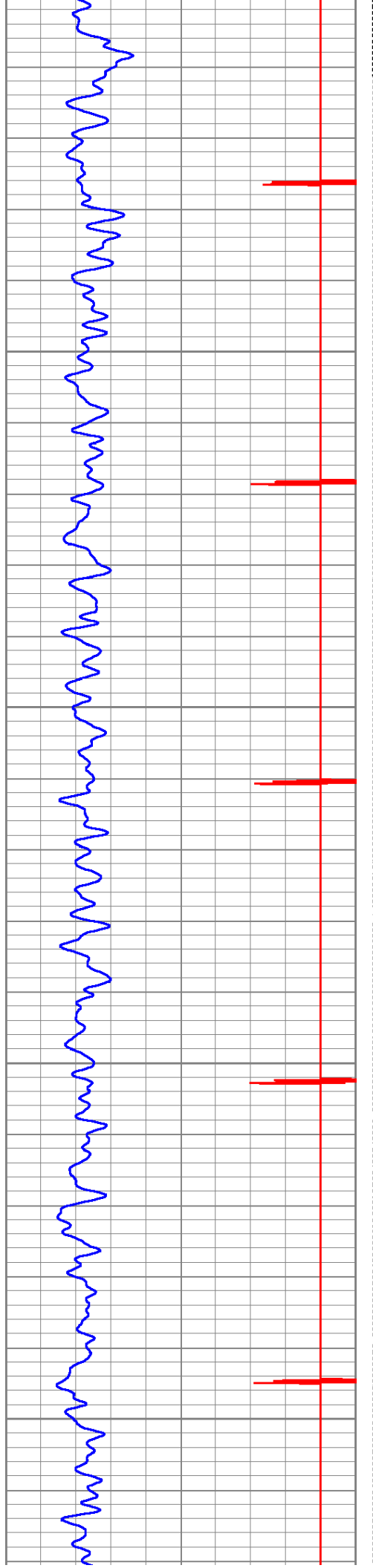




700

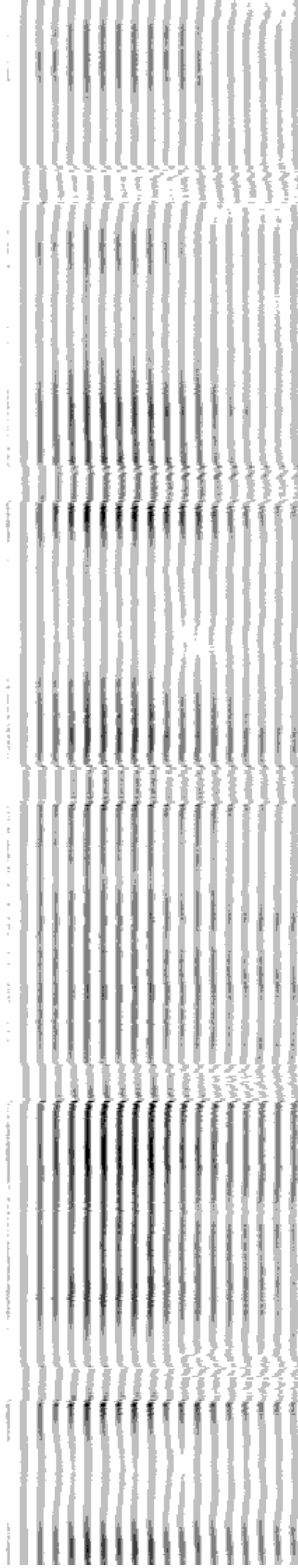
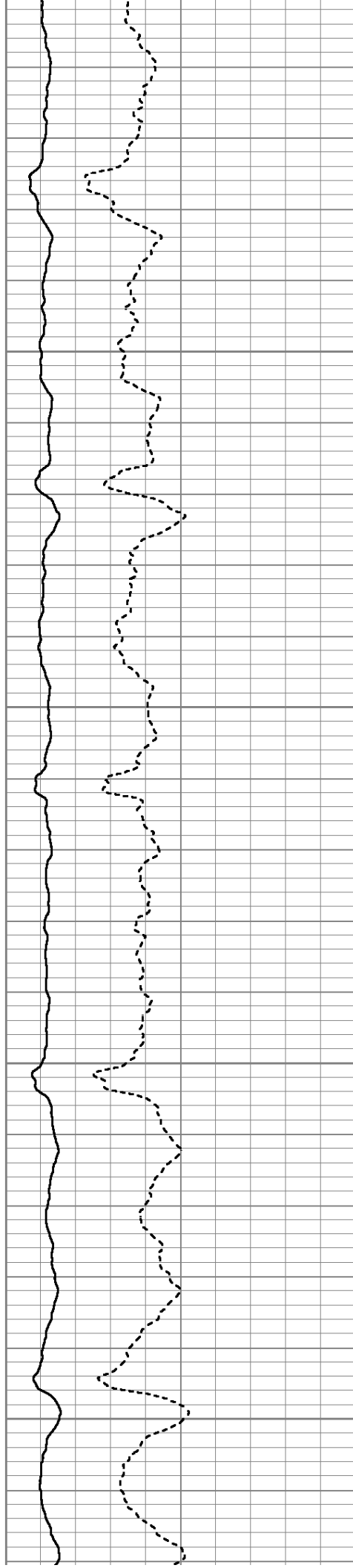
800

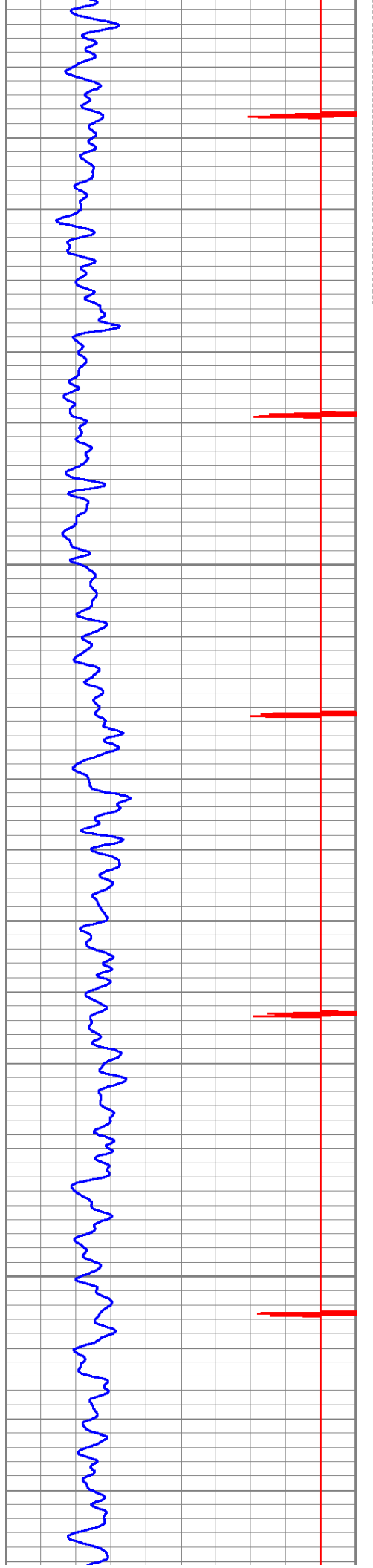




900

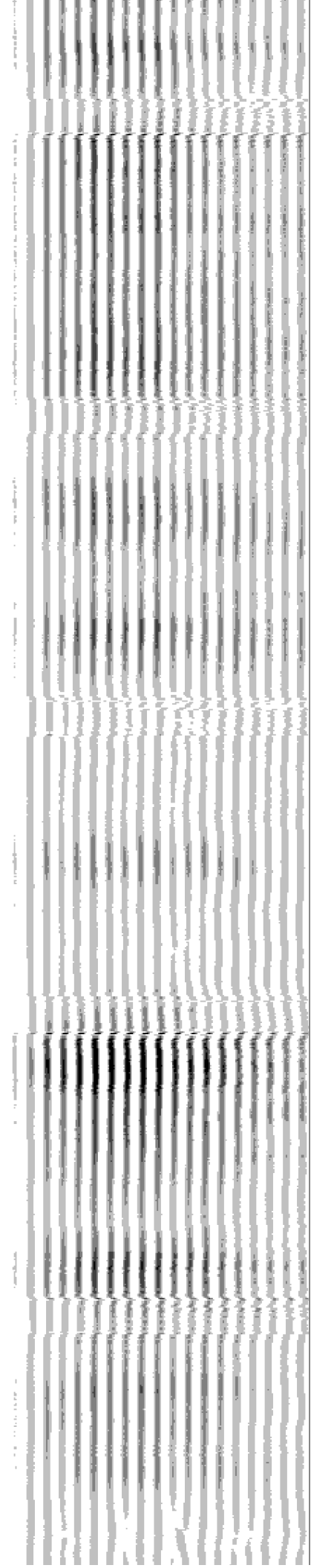
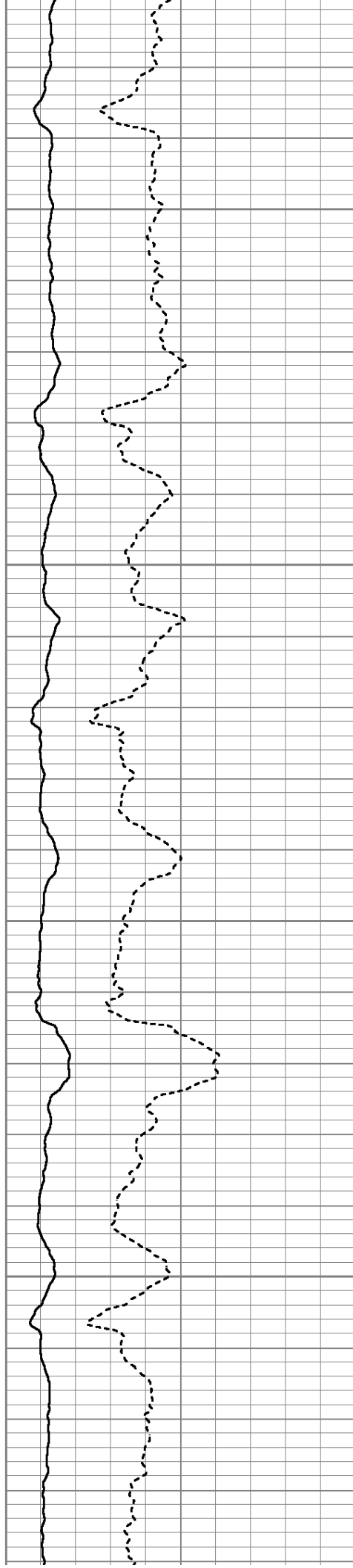
1000

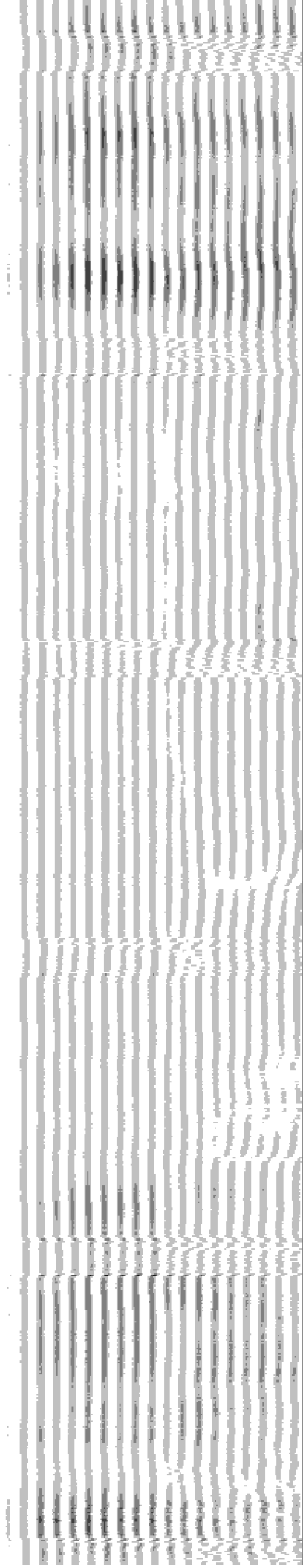
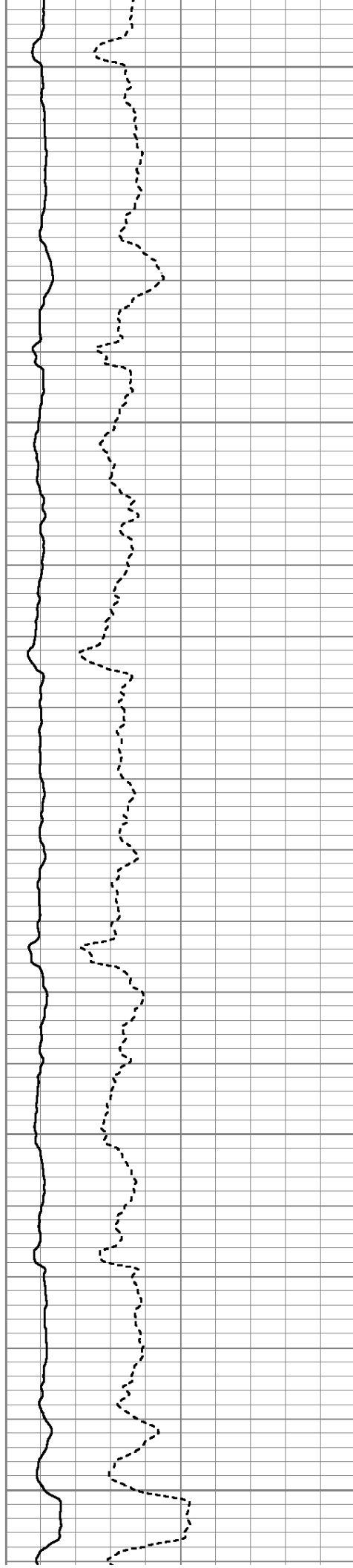
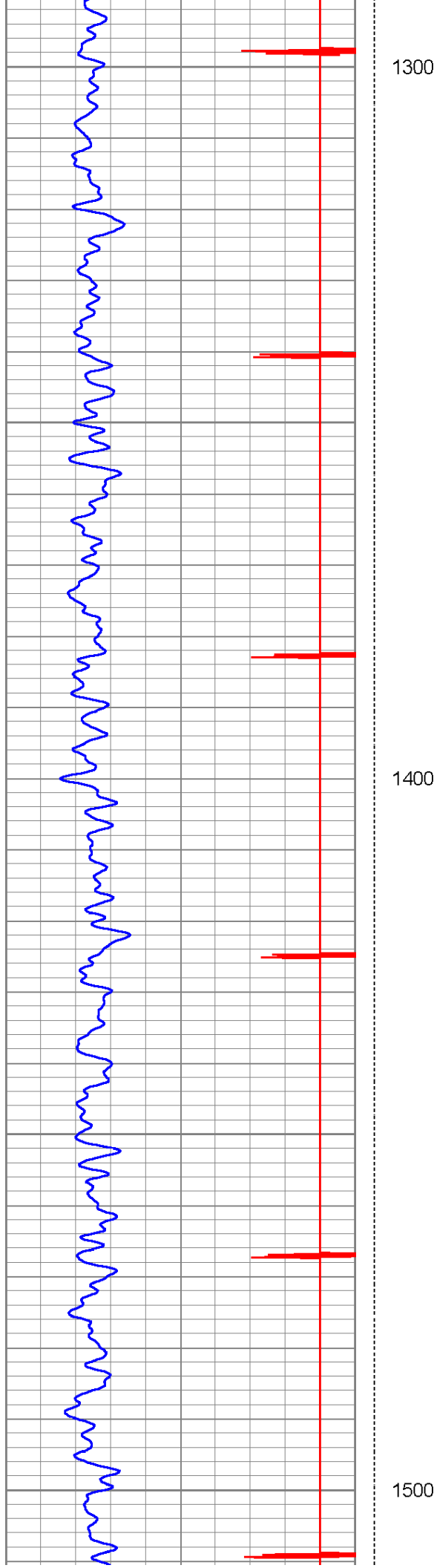




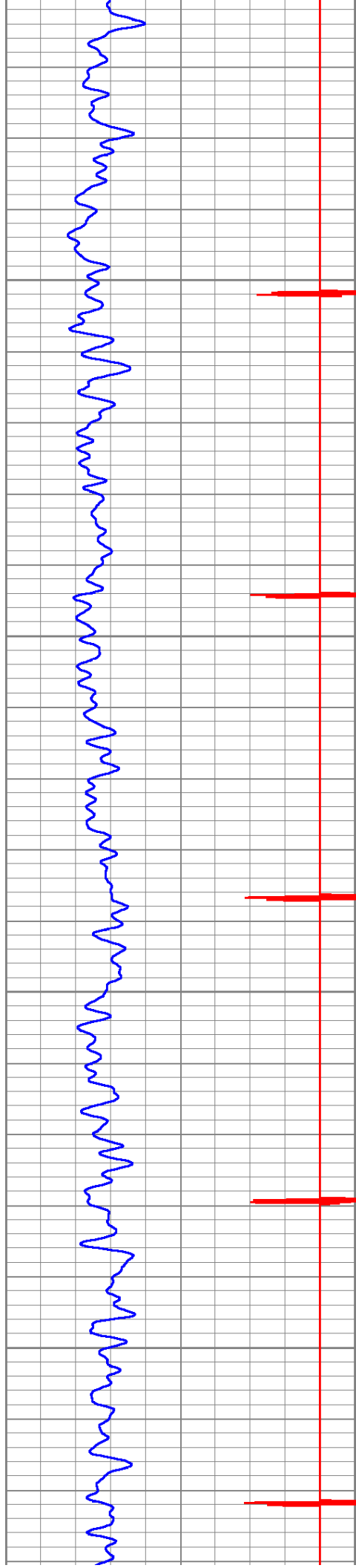
1100

1200



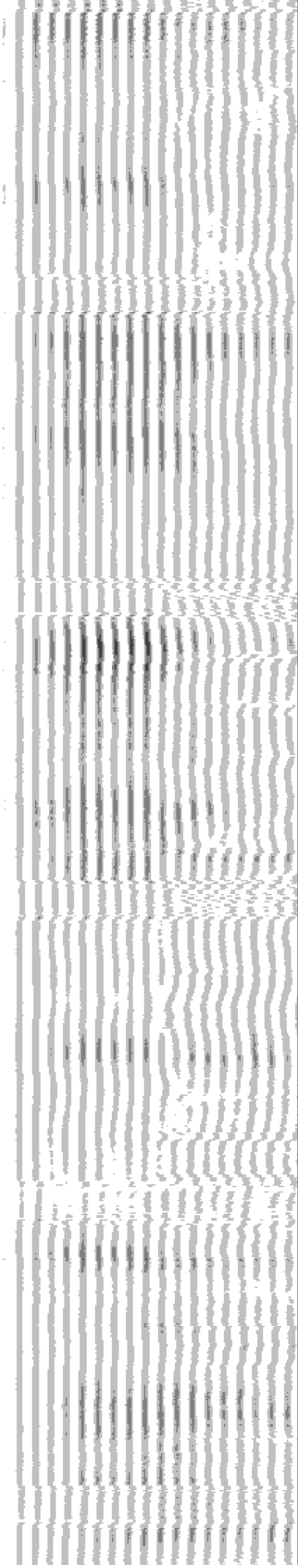
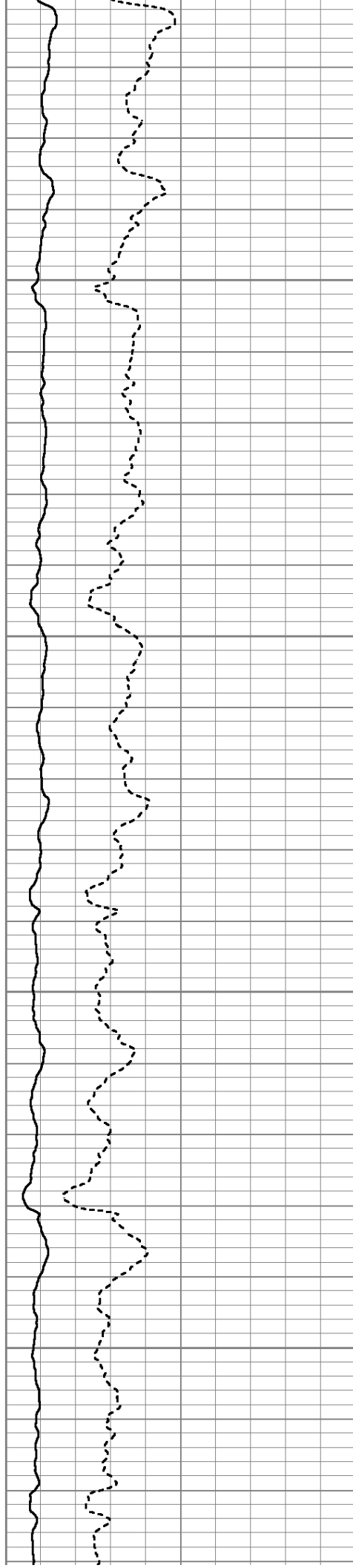


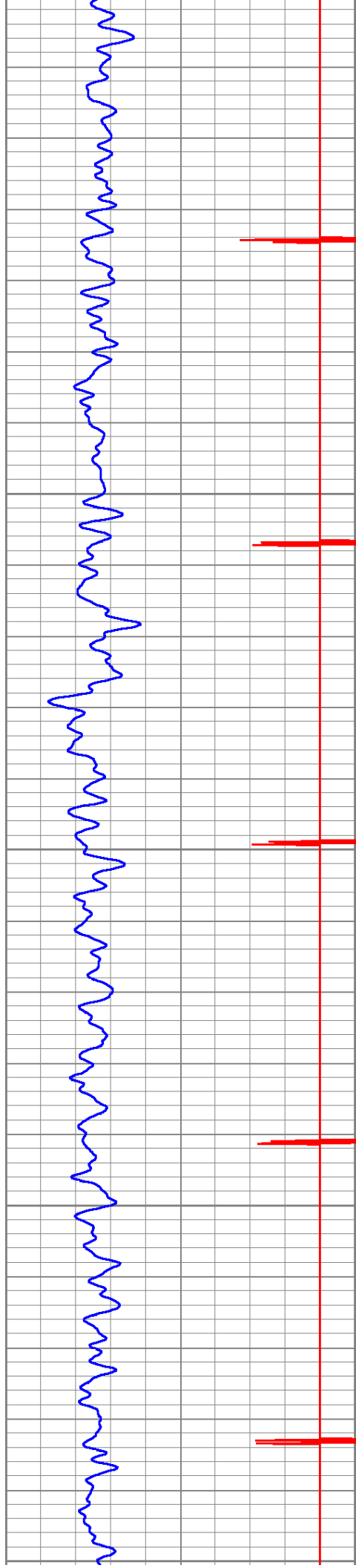




1600

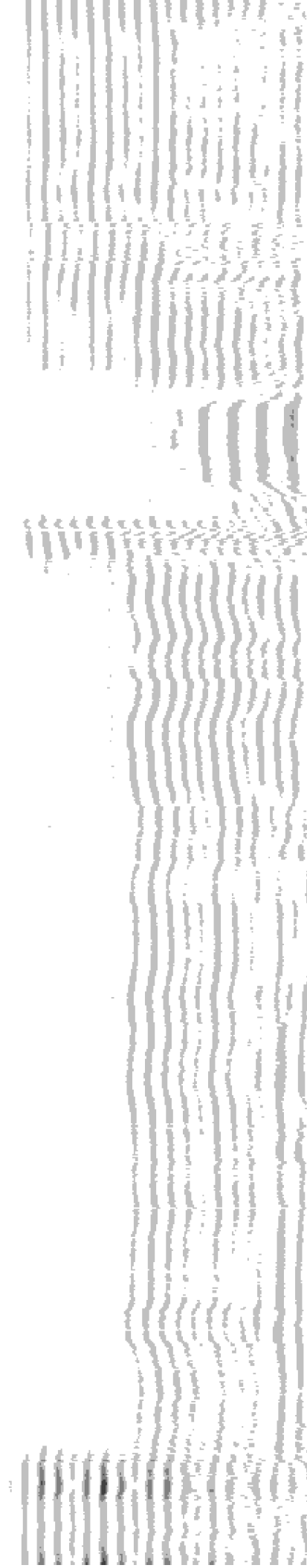
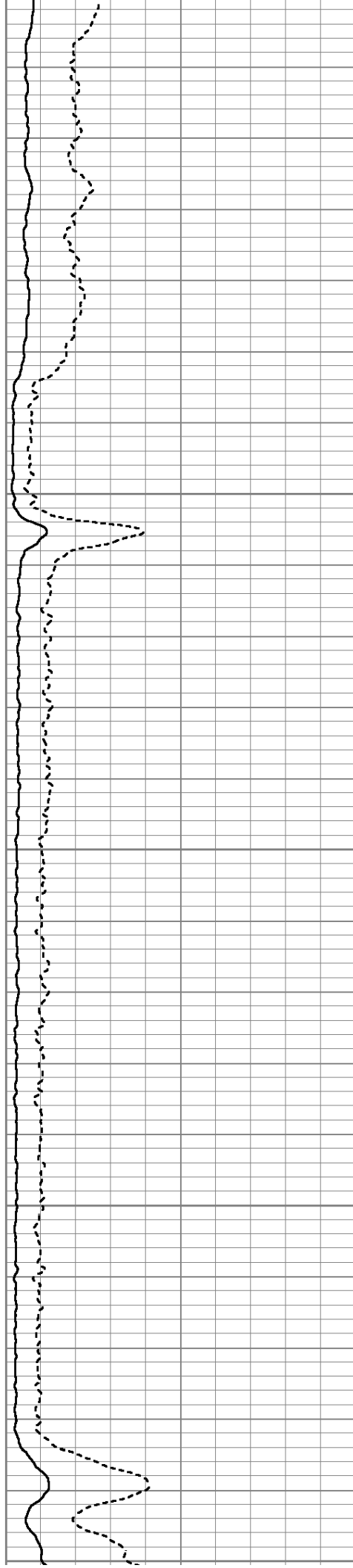
1700

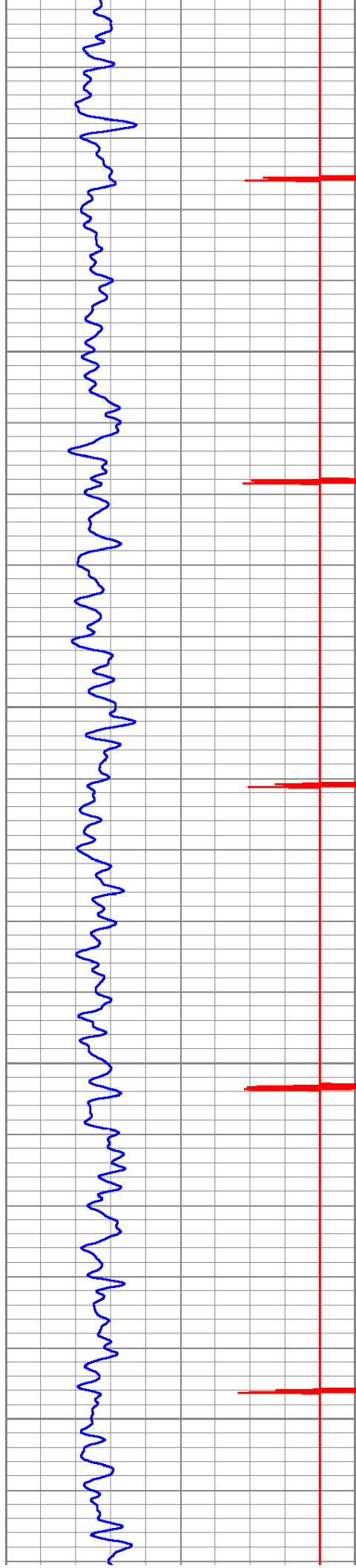




1800

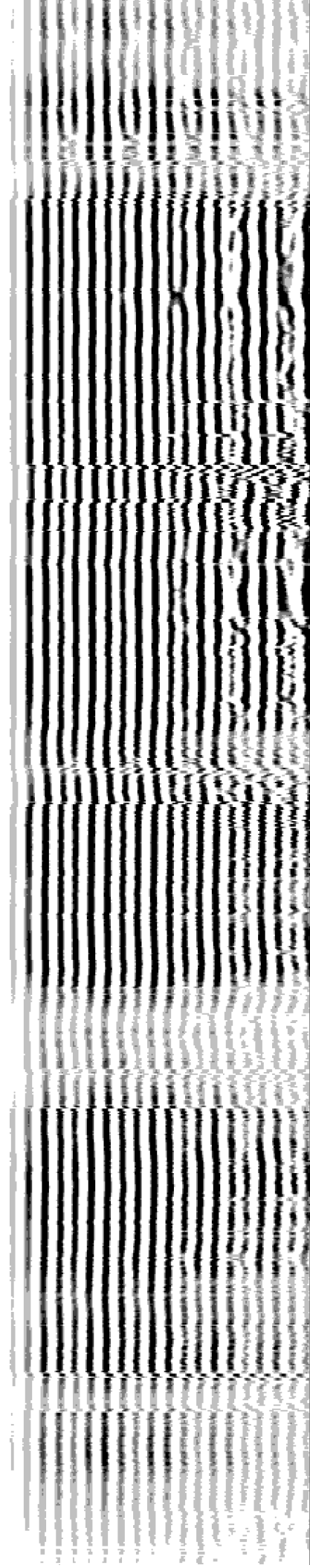
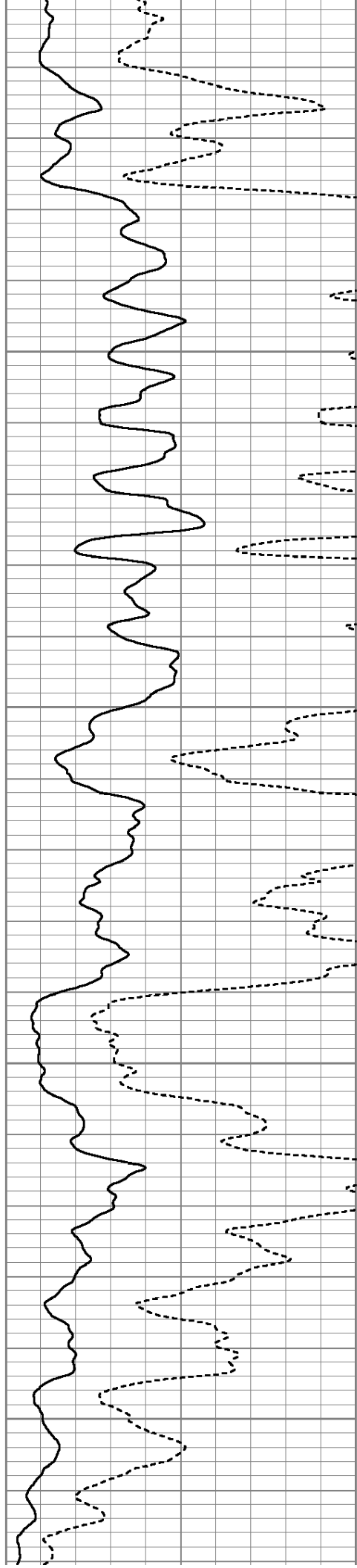
1900

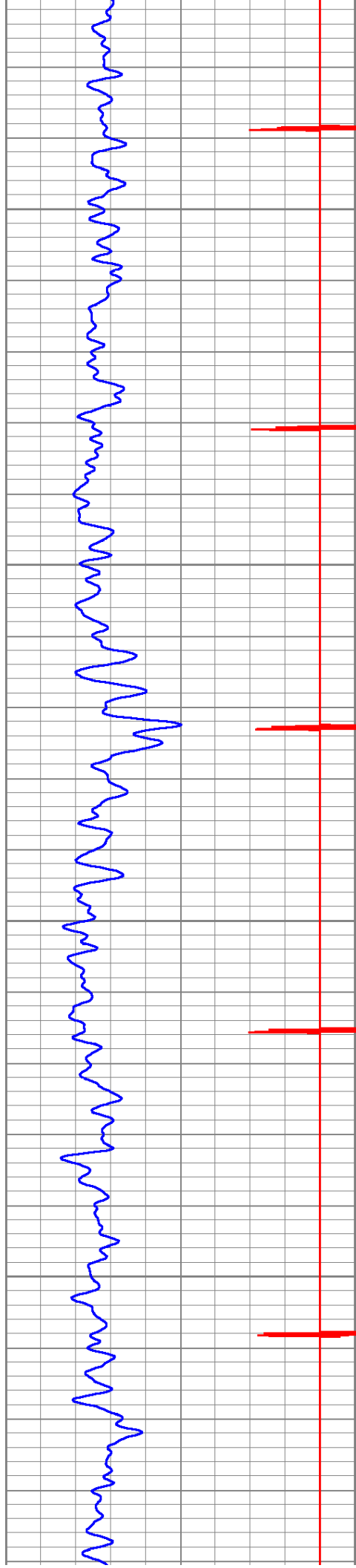




2000

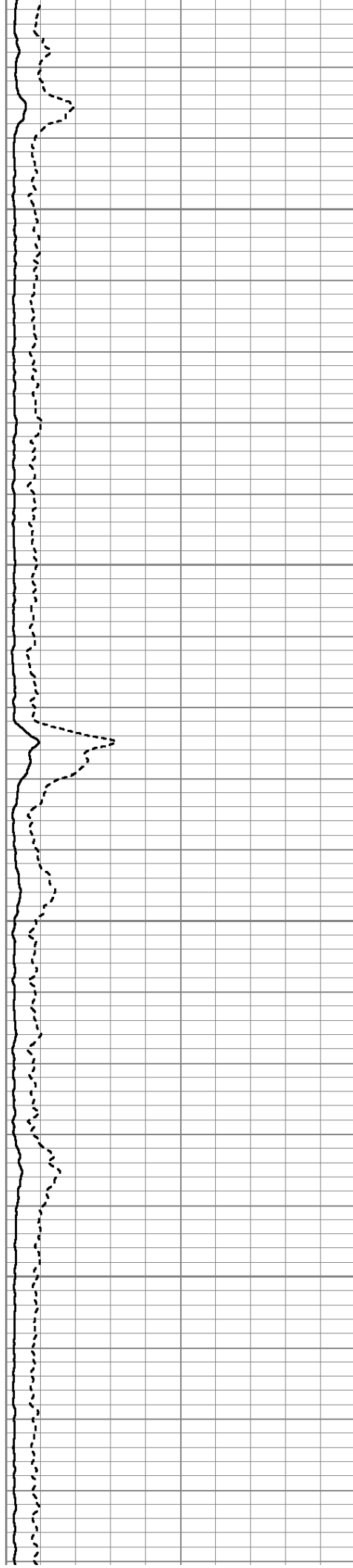
2100

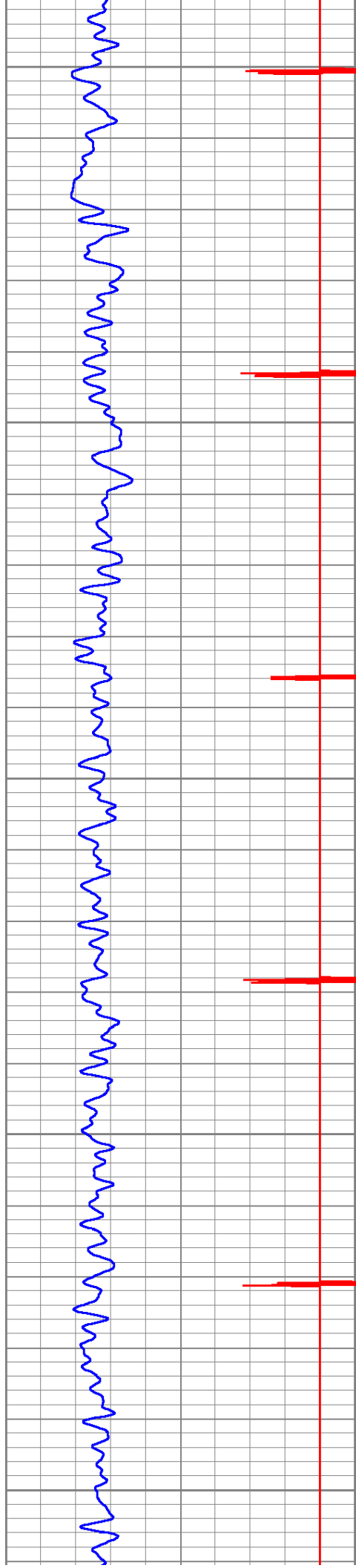




2200

2300

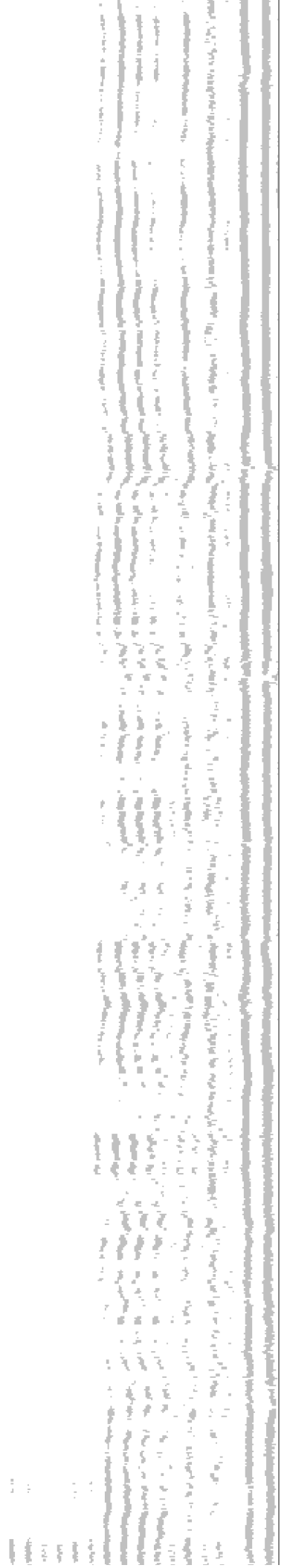
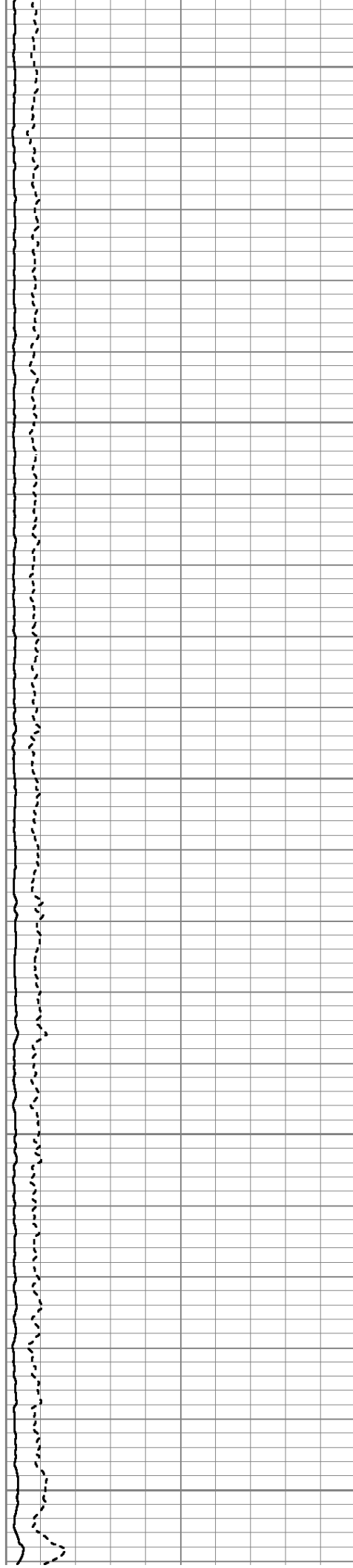


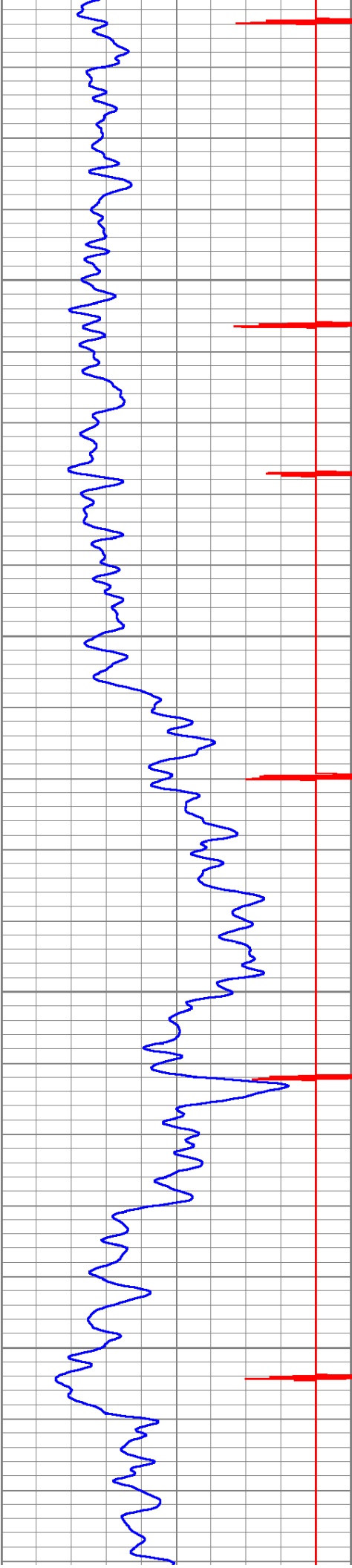


2400

2500

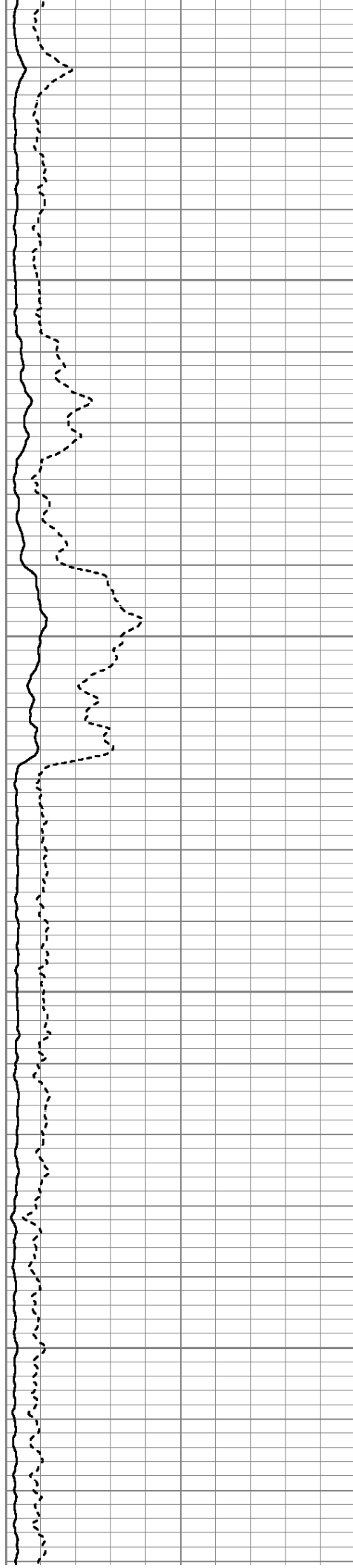
2600

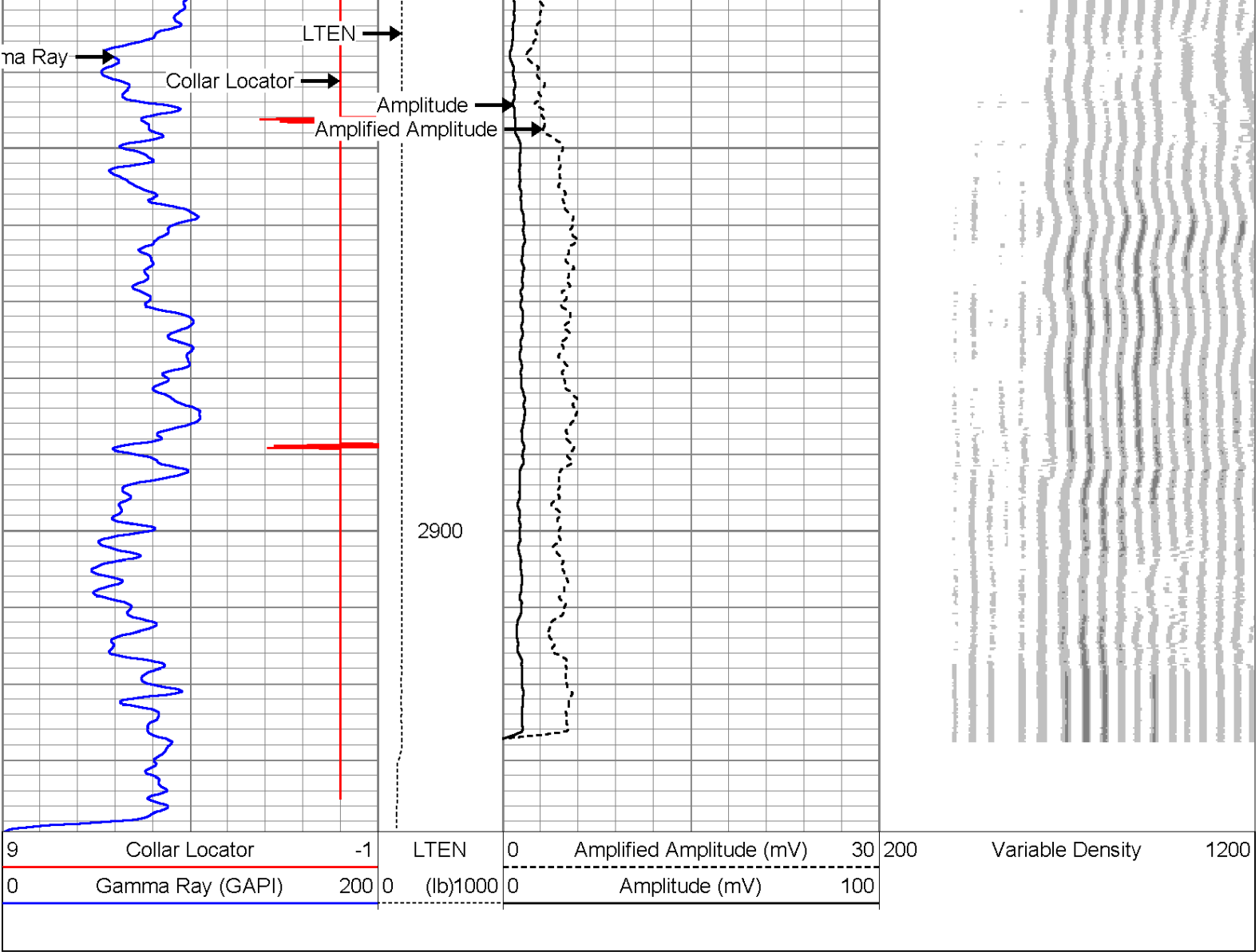




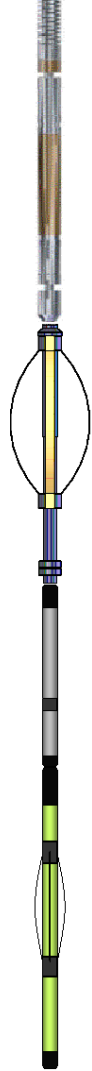
2700

2800





Sensor	Offset (ft)	Schematic	Description	Len (ft)	OD (in)	Wt (lb)
			SDSCHD Cable Head for Testing	1.00	1.44	1.00
			cent.-Probe (cent) probe cent.	2.88	2.75	25.00
WVF3	12.48		CBL-Probe (110215) 2.75 digital probe	8.75	2.75	106.50

WVF5	11.48					
			cent.-Probe (cent) probe cent.	2.88	2.75	25.00
CCL	4.13		CCL-Probe (081119)	2.02	2.75	
GR	0.79		GR-Probe275dig (110249) Probe Digital Gamma-Ray	3.33	2.75	57.00
Dataset: haven hill 14-15.db: field/well/run1/pass9 Total Length: 20.85 ft Total Weight: 214.50 lb O.D. 2.75 in						

	Company	Augustus Energy Resources
	Well	Haven Hill 14-15
	Field	Wild Cat
	County	Yuma
	State	Co.