

PETROLEUM DEVELOPMENT CORP Weld County CO

Well Name: **Chesnut 28R-443**

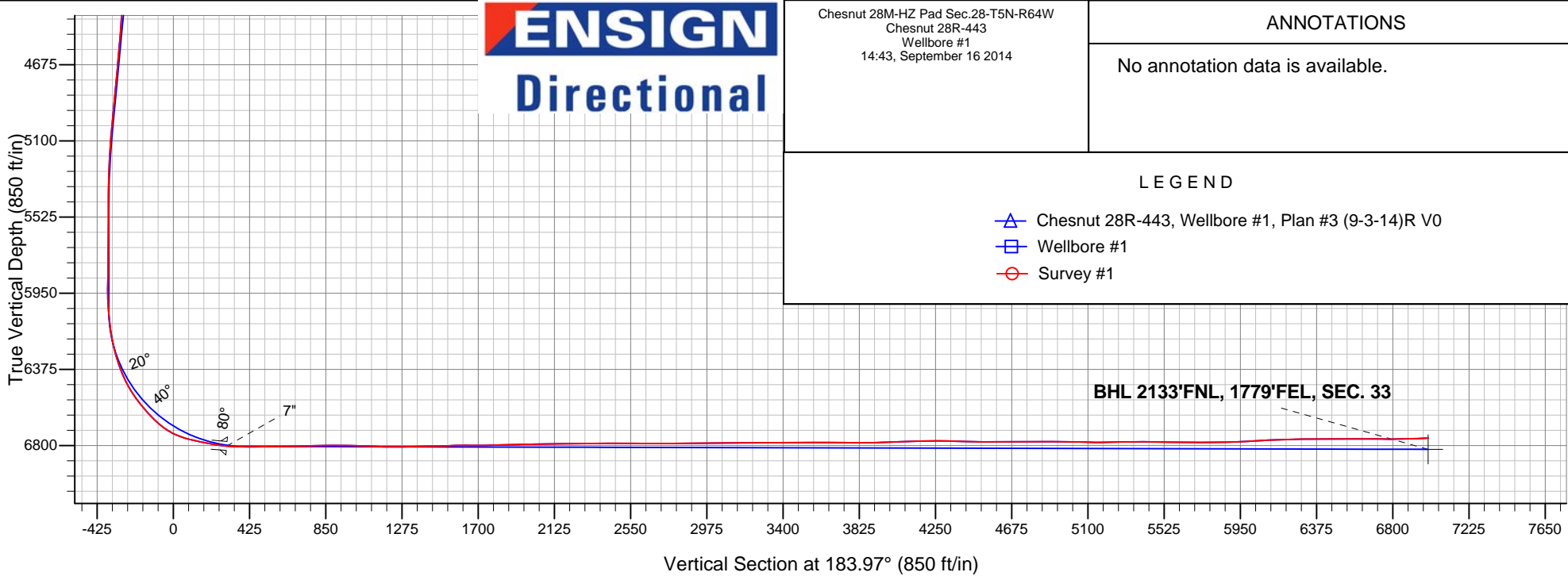
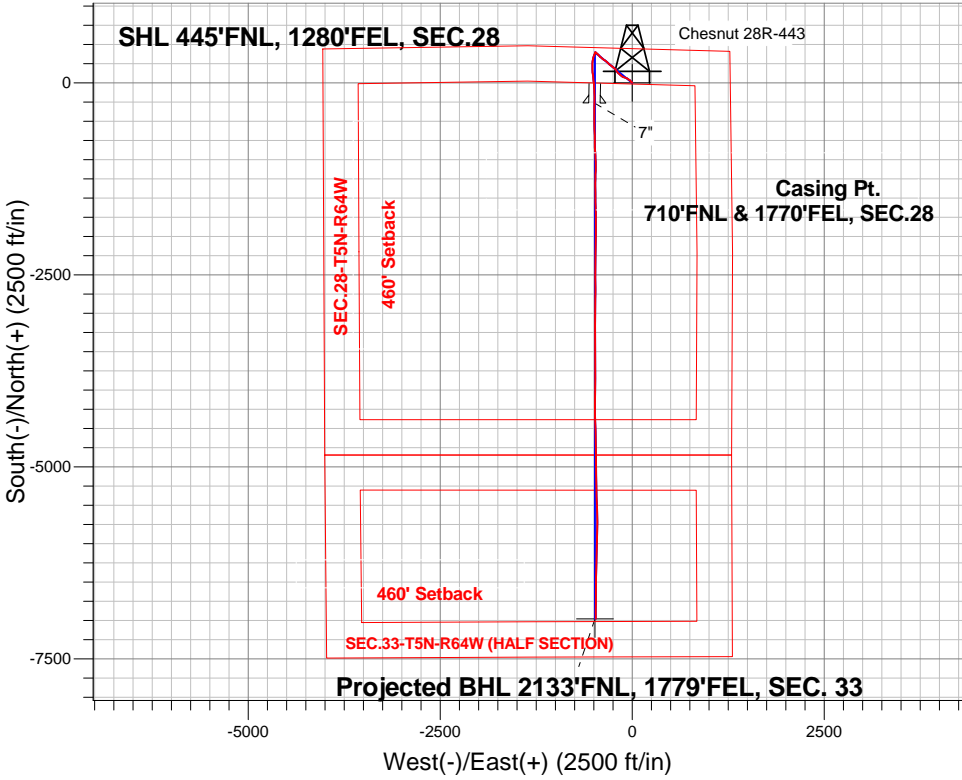
Surface Location: Chesnut 28M-HZ Pad Sec.28-T5N-R64W
North American Datum 1983 , US State Plane 1983 , Colorado Northern Zone

Ground Elevation: 4620.0

+N/-S	+E/-W	Northing	Easting	Latitude	Longitude	Slot
0.0	0.0	1381355.74	3264716.73	40.376330	-104.549840	
Ensign 121 RKB - 13.5' WELL @ 4633.5ft (Ensign 121 RKB - 13.5')						

FINAL SURVEY

Projected Bottom Hole Location
13935'MD 6758'TVD 6981'S & 474'W of SHL
92.2 degree Incl @ 179.9 degree AZM





PETROLEUM DEVELOPMENT CORP Weld County CO

SEC.28-T5N-R64W

Chesnut 28M-HZ Pad Sec.28-T5N-R64W

Chesnut 28R-443

Wellbore #1

Survey: Survey #1

Standard Survey Report

16 September, 2014

Company:	PETROLEUM DEVELOPMENT CORP Weld County CO	Local Co-ordinate Reference:	Well Chesnut 28R-443
Project:	SEC.28-T5N-R64W	TVD Reference:	WELL @ 4633.5ft (Ensign 121 RKB - 13.5')
Site:	Chesnut 28M-HZ Pad Sec.28-T5N-R64W	MD Reference:	WELL @ 4633.5ft (Ensign 121 RKB - 13.5')
Well:	Chesnut 28R-443	North Reference:	True
Wellbore:	Wellbore #1	Survey Calculation Method:	Minimum Curvature
Design:	Wellbore #1	Database:	Landmark

Project	SEC.28-T5N-R64W, Weld County, Colorado		
Map System:	US State Plane 1983	System Datum:	Mean Sea Level
Geo Datum:	North American Datum 1983		Using Well Reference Point
Map Zone:	Colorado Northern Zone		Using geodetic scale factor

Site	Chesnut 28M-HZ Pad Sec.28-T5N-R64W				
Site Position:		Northing:	1,381,420.67 ft	Latitude:	40.376510
From:	Lat/Long	Easting:	3,264,654.74 ft	Longitude:	-104.550060
Position Uncertainty:	0.0 ft	Slot Radius:	"	Grid Convergence:	0.61 °

Well	Chesnut 28R-443					
Well Position	+N-S	0.0 ft	Northing:	1,381,355.74 ft	Latitude:	40.376330
	+E-W	0.0 ft	Easting:	3,264,716.73 ft	Longitude:	-104.549840
Position Uncertainty		0.0 ft	Wellhead Elevation:	ft	Ground Level:	4,620.0 ft

Wellbore	Wellbore #1				
Magnetics	Model Name	Sample Date	Declination (°)	Dip Angle (°)	Field Strength (nT)
	IGRF2010	9/3/2014	8.31	66.95	52,804

Design	Wellbore #1				
Audit Notes:					
Version:	1.0	Phase:	ACTUAL	Tie On Depth:	0.0
Vertical Section:	Depth From (TVD) (ft)	+N/-S (ft)	+E/-W (ft)	Direction (°)	
	0.0	0.0	0.0	183.97	

Survey Program	Date	9/16/2014			
From (ft)	To (ft)	Survey (Wellbore)	Tool Name	Description	
163.0	13,935.0	Survey #1 (Wellbore #1)	MWD	MWD - Standard	

Survey										
Measured Depth (ft)	Inclination (°)	Azimuth (°)	Vertical Depth (ft)	+N/-S (ft)	+E/-W (ft)	Vertical Section (ft)	Dogleg Rate (°/100ft)	Build Rate (°/100ft)	Turn Rate (°/100ft)	
0.0	0.00	0.00	0.0	0.0	0.0	0.0	0.00	0.00	0.00	
1.0	0.00	15.00	1.0	0.0	0.0	0.0	0.18	0.18	0.00	
SHL 445'FNL, 1280'FEL, SEC.28										
163.0	0.30	15.00	163.0	0.4	0.1	-0.4	0.18	0.18	0.00	
254.0	0.30	45.60	254.0	0.8	0.3	-0.8	0.17	0.00	33.63	
345.0	0.30	19.40	345.0	1.2	0.6	-1.2	0.15	0.00	-28.79	
436.0	0.30	317.70	436.0	1.6	0.5	-1.6	0.34	0.00	-67.80	
527.0	0.40	306.30	527.0	2.0	0.1	-2.0	0.13	0.11	-12.53	
617.0	0.50	315.90	617.0	2.4	-0.4	-2.4	0.14	0.11	10.67	
708.0	0.70	307.30	708.0	3.1	-1.2	-3.0	0.24	0.22	-9.45	
800.0	0.80	303.60	800.0	3.8	-2.1	-3.6	0.12	0.11	-4.02	
1,004.0	1.10	284.80	1,004.0	5.0	-5.2	-4.7	0.21	0.15	-9.22	

Company:	PETROLEUM DEVELOPMENT CORP Weld County CO	Local Co-ordinate Reference:	Well Chesnut 28R-443
Project:	SEC.28-T5N-R64W	TVD Reference:	WELL @ 4633.5ft (Ensign 121 RKB - 13.5')
Site:	Chesnut 28M-HZ Pad Sec.28-T5N-R64W	MD Reference:	WELL @ 4633.5ft (Ensign 121 RKB - 13.5')
Well:	Chesnut 28R-443	North Reference:	True
Wellbore:	Wellbore #1	Survey Calculation Method:	Minimum Curvature
Design:	Wellbore #1	Database:	Landmark

Survey									
Measured Depth (ft)	Inclination (°)	Azimuth (°)	Vertical Depth (ft)	+N/-S (ft)	+E/-W (ft)	Vertical Section (ft)	Dogleg Rate (°/100ft)	Build Rate (°/100ft)	Turn Rate (°/100ft)
1,099.0	1.20	275.30	1,098.9	5.4	-7.1	-4.9	0.23	0.11	-10.00
1,190.0	3.40	337.40	1,189.9	7.9	-9.1	-7.3	3.33	2.42	68.24
1,283.0	6.90	321.20	1,282.5	14.8	-13.6	-13.9	4.04	3.76	-17.42
1,374.0	7.10	315.90	1,372.8	23.1	-21.0	-21.6	0.74	0.22	-5.82
1,465.0	5.40	314.90	1,463.3	30.2	-27.9	-28.2	1.87	-1.87	-1.10
1,557.0	6.70	304.10	1,554.7	36.3	-35.4	-33.7	1.87	1.41	-11.74
1,647.0	8.00	301.30	1,644.0	42.5	-45.1	-39.2	1.50	1.44	-3.11
1,739.0	11.10	304.10	1,734.7	50.8	-57.9	-46.6	3.41	3.37	3.04
1,831.0	11.30	297.80	1,825.0	59.9	-73.2	-54.7	1.35	0.22	-6.85
1,922.0	10.40	284.50	1,914.4	66.1	-89.1	-59.8	2.92	-0.99	-14.62
2,012.0	9.90	288.70	2,002.9	70.7	-104.3	-63.3	0.99	-0.56	4.67
2,104.0	9.80	293.60	2,093.6	76.3	-118.9	-67.9	0.92	-0.11	5.33
2,195.0	8.80	311.40	2,183.4	84.0	-131.3	-74.7	3.33	-1.10	19.56
2,288.0	11.20	305.90	2,275.0	94.0	-143.9	-83.8	2.77	2.58	-5.91
2,380.0	9.80	314.90	2,365.5	104.8	-156.7	-93.7	2.34	-1.52	9.78
2,471.0	10.60	307.50	2,455.0	115.4	-168.8	-103.4	1.69	0.88	-8.13
2,562.0	9.80	310.70	2,544.6	125.5	-181.3	-112.6	1.08	-0.88	3.52
2,652.0	11.30	327.00	2,633.1	137.9	-192.0	-124.3	3.69	1.67	18.11
2,743.0	11.90	326.50	2,722.2	153.2	-202.0	-138.8	0.67	0.66	-0.55
2,834.0	11.30	320.70	2,811.4	167.9	-212.8	-152.8	1.44	-0.66	-6.37
2,926.0	11.10	318.20	2,901.6	181.5	-224.4	-165.5	0.57	-0.22	-2.72
3,021.0	10.00	308.40	2,995.0	193.5	-237.0	-176.6	2.21	-1.16	-10.32
3,116.0	8.50	304.30	3,088.8	202.5	-249.3	-184.8	1.72	-1.58	-4.32
3,211.0	7.20	312.10	3,182.9	210.5	-259.5	-192.0	1.77	-1.37	8.21
3,306.0	6.40	306.80	3,277.2	217.6	-268.1	-198.5	1.07	-0.84	-5.58
3,402.0	7.40	312.60	3,372.5	225.0	-277.0	-205.3	1.27	1.04	6.04
3,497.0	6.90	304.10	3,466.8	232.4	-286.2	-212.0	1.23	-0.53	-8.95
3,592.0	8.50	314.70	3,560.9	240.5	-295.9	-219.4	2.25	1.68	11.16
3,687.0	8.90	315.60	3,654.8	250.7	-306.0	-228.9	0.44	0.42	0.95
3,783.0	8.60	315.60	3,749.7	261.1	-316.3	-238.6	0.31	-0.31	0.00
3,878.0	8.00	311.40	3,843.7	270.6	-326.2	-247.3	0.90	-0.63	-4.42
3,973.0	7.30	304.70	3,937.9	278.4	-336.1	-254.4	1.19	-0.74	-7.05
4,068.0	8.20	306.60	4,032.0	285.9	-346.5	-261.2	0.98	0.95	2.00
4,164.0	7.70	298.20	4,127.1	293.0	-357.7	-267.5	1.32	-0.52	-8.75
4,259.0	8.40	303.40	4,221.2	299.8	-369.1	-273.5	1.06	0.74	5.47
4,354.0	8.40	312.10	4,315.1	308.3	-380.0	-281.2	1.34	0.00	9.16
4,449.0	7.00	306.30	4,409.3	316.4	-389.8	-288.6	1.68	-1.47	-6.11
4,544.0	7.70	309.20	4,503.5	323.8	-399.4	-295.4	0.83	0.74	3.05
4,640.0	8.50	313.30	4,598.6	332.7	-409.6	-303.6	1.03	0.83	4.27
4,735.0	6.70	315.40	4,692.7	341.5	-418.6	-311.7	1.92	-1.89	2.21
4,830.0	8.40	319.60	4,786.9	350.7	-427.0	-320.3	1.88	1.79	4.42
4,925.0	9.20	313.50	4,880.8	361.3	-437.0	-330.1	1.29	0.84	-6.42
5,020.0	8.00	311.50	4,974.7	370.9	-447.4	-339.0	1.30	-1.26	-2.11
5,116.0	7.70	312.60	5,069.8	379.6	-457.2	-347.0	0.35	-0.31	1.15
5,211.0	6.00	309.80	5,164.1	387.1	-465.7	-353.9	1.82	-1.79	-2.95
5,306.0	4.00	302.60	5,258.8	392.1	-472.3	-358.4	2.20	-2.11	-7.58
5,401.0	2.50	295.40	5,353.6	394.8	-476.9	-360.8	1.63	-1.58	-7.58
5,497.0	1.20	280.60	5,449.5	395.8	-479.8	-361.6	1.43	-1.35	-15.42
5,591.0	0.50	61.20	5,543.5	396.2	-480.4	-362.0	1.72	-0.74	149.57
5,687.0	0.70	49.60	5,639.5	396.8	-479.6	-362.6	0.24	0.21	-12.08
5,782.0	0.80	46.30	5,734.5	397.6	-478.7	-363.5	0.11	0.11	-3.47
5,877.0	0.80	28.90	5,829.5	398.7	-477.9	-364.6	0.25	0.00	-18.32
5,972.0	0.60	41.20	5,924.5	399.6	-477.2	-365.6	0.26	-0.21	12.95
6,067.0	3.70	201.80	6,019.5	397.2	-478.1	-363.1	4.50	3.26	169.05

Company:	PETROLEUM DEVELOPMENT CORP Weld County CO	Local Co-ordinate Reference:	Well Chesnut 28R-443
Project:	SEC.28-T5N-R64W	TVD Reference:	WELL @ 4633.5ft (Ensign 121 RKB - 13.5')
Site:	Chesnut 28M-HZ Pad Sec.28-T5N-R64W	MD Reference:	WELL @ 4633.5ft (Ensign 121 RKB - 13.5')
Well:	Chesnut 28R-443	North Reference:	True
Wellbore:	Wellbore #1	Survey Calculation Method:	Minimum Curvature
Design:	Wellbore #1	Database:	Landmark

Survey									
Measured Depth (ft)	Inclination (°)	Azimuth (°)	Vertical Depth (ft)	+N/-S (ft)	+E/-W (ft)	Vertical Section (ft)	Dogleg Rate (°/100ft)	Build Rate (°/100ft)	Turn Rate (°/100ft)
6,162.0	6.10	200.80	6,114.1	389.6	-481.0	-355.3	2.53	2.53	-1.05
6,258.0	12.00	205.50	6,208.9	375.8	-487.1	-341.1	6.19	6.15	4.90
6,353.0	17.10	201.30	6,300.8	353.9	-496.4	-318.6	5.48	5.37	-4.42
6,448.0	21.60	195.20	6,390.4	324.0	-506.1	-288.1	5.19	4.74	-6.42
6,543.0	30.00	186.90	6,475.9	283.4	-513.6	-247.2	9.61	8.84	-8.74
6,639.0	37.50	182.30	6,555.7	230.3	-517.6	-193.9	8.25	7.81	-4.79
6,734.0	43.00	176.50	6,628.2	169.0	-516.8	-132.8	7.00	5.79	-6.11
6,829.0	51.80	173.20	6,692.4	99.5	-510.4	-63.9	9.61	9.26	-3.47
6,924.0	66.90	173.40	6,740.7	18.5	-500.9	16.2	15.90	15.89	0.21
6,971.0	72.80	175.80	6,756.9	-25.4	-496.8	59.7	13.44	12.55	5.11
7,019.0	77.20	176.20	6,769.3	-71.6	-493.5	105.6	9.20	9.17	0.83
7,066.0	78.10	177.80	6,779.4	-117.5	-491.1	151.2	3.84	1.91	3.40
7,114.0	79.10	179.00	6,788.9	-164.5	-489.8	198.0	3.22	2.08	2.50
7,161.0	82.00	180.20	6,796.6	-210.8	-489.5	244.3	6.66	6.17	2.55
7,192.0	83.60	180.80	6,800.5	-241.6	-489.8	275.0	5.51	5.16	1.94
7,215.0	84.97	180.83	6,802.7	-264.5	-490.1	297.8	5.98	5.98	0.12
7"									
7,274.0	88.50	180.90	6,806.1	-323.4	-491.0	356.6	5.98	5.98	0.12
7,369.0	90.20	179.90	6,807.2	-418.4	-491.6	451.4	2.08	1.79	-1.05
7,464.0	90.90	179.50	6,806.3	-513.3	-491.1	546.2	0.85	0.74	-0.42
7,559.0	90.70	179.00	6,804.9	-608.3	-489.9	640.8	0.57	-0.21	-0.53
7,655.0	91.80	179.00	6,802.9	-704.3	-488.2	736.4	1.15	1.15	0.00
7,750.0	91.30	179.00	6,800.3	-799.2	-486.6	831.0	0.53	-0.53	0.00
7,841.0	89.80	175.50	6,799.4	-890.1	-482.2	921.4	4.18	-1.65	-3.85
7,932.0	88.60	177.20	6,800.7	-980.9	-476.4	1,011.6	2.29	-1.32	1.87
8,023.0	87.20	179.20	6,804.0	-1,071.8	-473.5	1,102.0	2.68	-1.54	2.20
8,114.0	88.80	182.50	6,807.2	-1,162.7	-474.9	1,192.8	4.03	1.76	3.63
8,206.0	91.20	181.10	6,807.2	-1,254.7	-477.8	1,284.8	3.02	2.61	-1.52
8,296.0	91.10	179.70	6,805.4	-1,344.6	-478.4	1,374.6	1.56	-0.11	-1.56
8,388.0	91.30	179.20	6,803.5	-1,436.6	-477.5	1,466.3	0.59	0.22	-0.54
8,481.0	92.60	179.50	6,800.3	-1,529.6	-476.5	1,558.9	1.43	1.40	0.32
8,571.0	89.30	177.80	6,798.8	-1,619.5	-474.4	1,648.5	4.12	-3.67	-1.89
8,661.0	90.70	179.90	6,798.8	-1,709.5	-472.6	1,738.1	2.80	1.56	2.33
8,753.0	91.60	179.90	6,797.0	-1,801.5	-472.4	1,829.9	0.98	0.98	0.00
8,850.0	91.80	181.30	6,794.1	-1,898.4	-473.4	1,926.7	1.46	0.21	1.44
8,941.0	90.00	180.40	6,792.6	-1,989.4	-474.8	2,017.5	2.21	-1.98	-0.99
9,036.0	92.30	180.20	6,790.7	-2,084.4	-475.3	2,112.3	2.43	2.42	-0.21
9,123.0	90.40	180.60	6,788.7	-2,171.3	-475.9	2,199.1	2.23	-2.18	0.46
9,215.0	89.30	180.60	6,788.9	-2,263.3	-476.8	2,290.9	1.20	-1.20	0.00
9,296.0	90.90	180.60	6,788.8	-2,344.3	-477.7	2,371.8	1.98	1.98	0.00
9,398.0	90.40	179.90	6,787.6	-2,446.3	-478.1	2,473.6	0.84	-0.49	-0.69
9,490.0	89.30	179.00	6,787.9	-2,538.3	-477.2	2,565.3	1.54	-1.20	-0.98
9,581.0	89.60	179.70	6,788.7	-2,629.3	-476.2	2,656.0	0.84	0.33	0.77
9,672.0	90.10	181.50	6,789.0	-2,720.3	-477.2	2,746.8	2.05	0.55	1.98
9,763.0	91.60	181.30	6,787.6	-2,811.2	-479.4	2,837.7	1.66	1.65	-0.22
9,854.0	90.10	181.10	6,786.3	-2,902.2	-481.3	2,928.6	1.66	-1.65	-0.22
9,945.0	89.50	179.50	6,786.6	-2,993.2	-481.8	3,019.4	1.88	-0.66	-1.76
10,036.0	90.60	180.80	6,786.5	-3,084.2	-482.0	3,110.2	1.87	1.21	1.43
10,127.0	91.30	180.40	6,785.0	-3,175.2	-482.9	3,201.0	0.89	0.77	-0.44
10,217.0	90.00	180.00	6,784.0	-3,265.2	-483.3	3,290.8	1.51	-1.44	-0.44
10,308.0	90.10	179.90	6,783.9	-3,356.2	-483.2	3,381.6	0.16	0.11	-0.11
10,400.0	90.40	179.20	6,783.5	-3,448.2	-482.5	3,473.3	0.83	0.33	-0.76
10,491.0	90.70	178.80	6,782.6	-3,539.1	-480.9	3,564.0	0.55	0.33	-0.44

Company:	PETROLEUM DEVELOPMENT CORP Weld County CO	Local Co-ordinate Reference:	Well Chesnut 28R-443
Project:	SEC.28-T5N-R64W	TVD Reference:	WELL @ 4633.5ft (Ensign 121 RKB - 13.5')
Site:	Chesnut 28M-HZ Pad Sec.28-T5N-R64W	MD Reference:	WELL @ 4633.5ft (Ensign 121 RKB - 13.5')
Well:	Chesnut 28R-443	North Reference:	True
Wellbore:	Wellbore #1	Survey Calculation Method:	Minimum Curvature
Design:	Wellbore #1	Database:	Landmark

Survey									
Measured Depth (ft)	Inclination (°)	Azimuth (°)	Vertical Depth (ft)	+N/-S (ft)	+E/-W (ft)	Vertical Section (ft)	Dogleg Rate (°/100ft)	Build Rate (°/100ft)	Turn Rate (°/100ft)
10,582.0	89.30	179.70	6,782.6	-3,630.1	-479.7	3,654.7	1.83	-1.54	0.99
10,677.0	89.00	179.70	6,784.1	-3,725.1	-479.2	3,749.4	0.32	-0.32	0.00
10,771.0	90.10	181.80	6,784.8	-3,819.1	-480.4	3,843.2	2.52	1.17	2.23
10,866.0	91.60	181.50	6,783.4	-3,914.1	-483.2	3,938.1	1.61	1.58	-0.32
10,962.0	93.50	180.80	6,779.1	-4,009.9	-485.1	4,033.9	2.11	1.98	-0.73
11,057.0	90.50	179.90	6,775.8	-4,104.9	-485.7	4,128.7	3.30	-3.16	-0.95
11,152.0	91.00	179.70	6,774.5	-4,199.9	-485.3	4,223.4	0.57	0.53	-0.21
11,249.0	88.70	178.60	6,774.8	-4,296.8	-483.9	4,320.0	2.63	-2.37	-1.13
11,343.0	88.40	177.90	6,777.2	-4,390.8	-481.0	4,413.5	0.81	-0.32	-0.74
11,438.0	88.80	177.90	6,779.5	-4,485.7	-477.5	4,508.0	0.42	0.42	0.00
11,533.0	90.70	179.20	6,779.9	-4,580.6	-475.1	4,602.5	2.42	2.00	1.37
11,628.0	91.10	179.00	6,778.4	-4,675.6	-473.6	4,697.2	0.47	0.42	-0.21
11,723.0	89.70	178.80	6,777.8	-4,770.6	-471.8	4,791.8	1.49	-1.47	-0.21
11,818.0	90.00	180.20	6,778.0	-4,865.6	-471.0	4,886.5	1.51	0.32	1.47
11,913.0	89.00	178.80	6,778.8	-4,960.6	-470.2	4,981.2	1.81	-1.05	-1.47
12,009.0	88.30	179.30	6,781.1	-5,056.5	-468.6	5,076.8	0.90	-0.73	0.52
12,104.0	90.70	179.50	6,781.9	-5,151.5	-467.6	5,171.5	2.54	2.53	0.21
12,199.0	91.00	179.20	6,780.5	-5,246.5	-466.5	5,266.2	0.45	0.32	-0.32
12,294.0	90.60	177.40	6,779.2	-5,341.4	-463.7	5,360.7	1.94	-0.42	-1.89
12,389.0	88.70	177.80	6,779.8	-5,436.4	-459.7	5,455.1	2.04	-2.00	0.42
12,484.0	89.70	179.00	6,781.1	-5,531.3	-457.0	5,549.7	1.64	1.05	1.26
12,580.0	89.90	178.50	6,781.4	-5,627.3	-455.0	5,645.3	0.56	0.21	-0.52
12,675.0	89.60	178.80	6,781.9	-5,722.3	-452.7	5,739.9	0.45	-0.32	0.32
12,770.0	90.70	180.60	6,781.6	-5,817.2	-452.2	5,834.6	2.22	1.16	1.89
12,865.0	92.20	183.40	6,779.2	-5,912.1	-455.5	5,929.5	3.34	1.58	2.95
12,960.0	93.70	182.70	6,774.3	-6,006.9	-460.6	6,024.4	1.74	1.58	-0.74
13,056.0	92.90	181.10	6,768.8	-6,102.7	-463.8	6,120.1	1.86	-0.83	-1.67
13,151.0	91.60	181.80	6,765.1	-6,197.6	-466.2	6,215.0	1.55	-1.37	0.74
13,246.0	89.60	180.90	6,764.1	-6,292.5	-468.4	6,309.9	2.31	-2.11	-0.95
13,341.0	90.70	179.30	6,763.8	-6,387.5	-468.6	6,404.6	2.04	1.16	-1.68
13,436.0	89.90	179.20	6,763.3	-6,482.5	-467.3	6,499.3	0.85	-0.84	-0.11
13,532.0	90.60	181.80	6,762.9	-6,578.5	-468.2	6,595.1	2.80	0.73	2.71
13,626.0	89.00	181.60	6,763.2	-6,672.4	-470.9	6,689.0	1.72	-1.70	-0.21
13,722.0	90.10	181.10	6,764.0	-6,768.4	-473.2	6,784.9	1.26	1.15	-0.52
13,817.0	91.50	180.10	6,762.6	-6,863.4	-474.2	6,879.8	1.81	1.47	-1.05
13,876.0	92.20	179.90	6,760.7	-6,922.4	-474.2	6,938.6	1.23	1.19	-0.34
13,931.4	92.20	179.90	6,758.6	-6,977.7	-474.1	6,993.8	0.00	0.00	0.00
BHL 2134'FNL, 1790'FEL, SEC. 33									
13,935.0	92.20	179.90	6,758.5	-6,981.3	-474.1	6,997.4	0.00	0.00	0.00

Casing Points					
Measured Depth (ft)	Vertical Depth (ft)	Name	Casing Diameter (")	Hole Diameter (")	
7,215.0	6,802.7	7"	7	7-1/2	

Checked By: _____ Approved By: _____ Date: _____