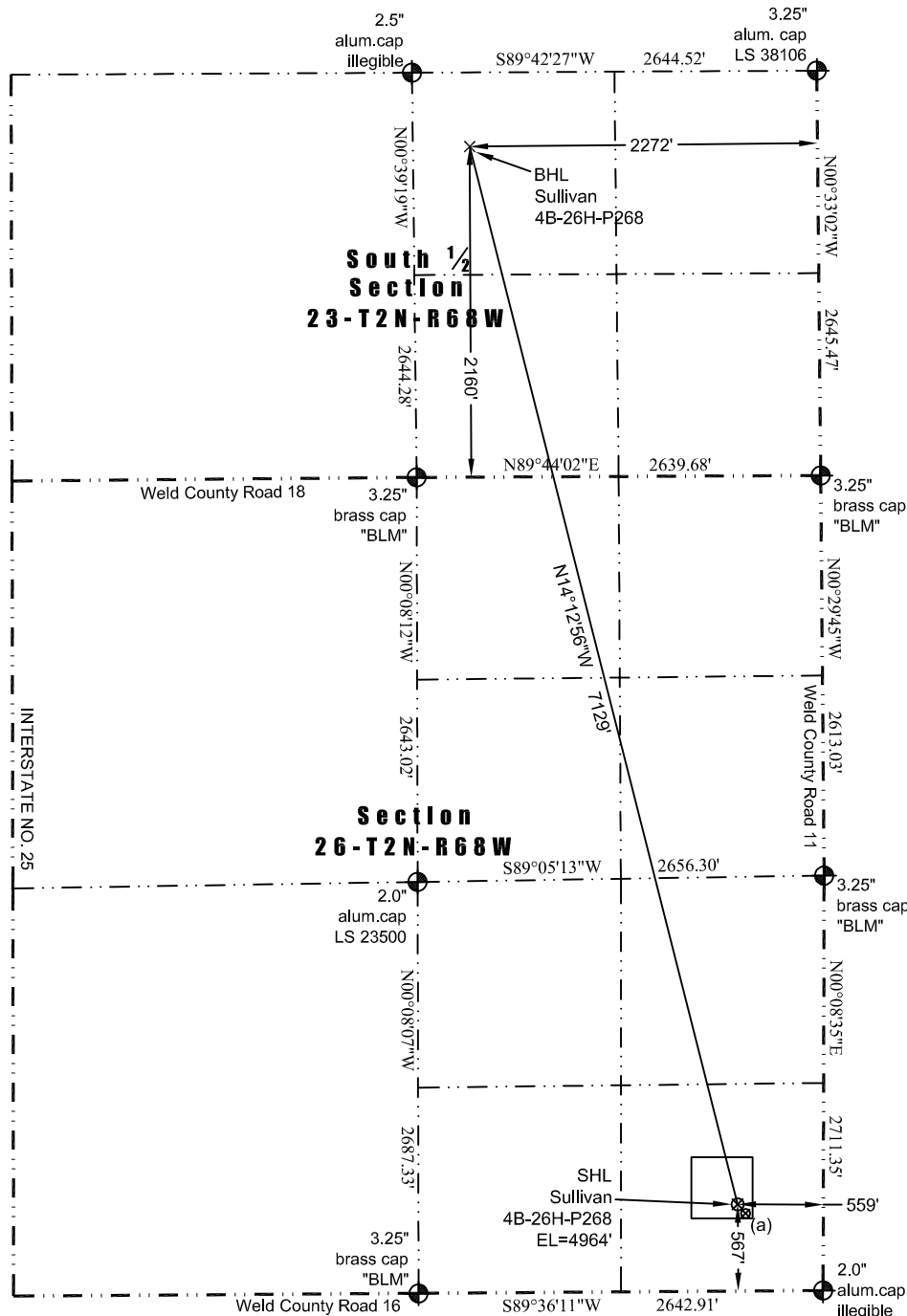




WELL LOCATION CERTIFICATE

THIS MAP DOES NOT REPRESENT A BOUNDARY SURVEY

Washburn Land Surveying
www.WashburnSurveying.com
970-232-9645



LEGEND
◆ - found survey monument
(C) - calculated dimension

(a) Existing Well Data:
Sullivan 44-26
Latitude: N 40.103812°
Longitude: W 104.962807°
FSL: 556'
FEL: 514'
ELEV: 4964'
PDOP: 1.8

Proposed Surface Hole Data:
Latitude: N 40.103840° (BHL: 40.122840°)
Longitude: W 104.962968° (BHL: 104.969079°)
PDOP: 1.5

Nearest:
Building: 627' northeast
Building Unit: 715' northeast
Above Ground Utility: 490' east
Public Road: 540' east
Railroad: +5,280'
Property Line: 262' north
Well Window: SHL is 91' inside
Existing Well: Sullivan 44-26; 46' southeast
High Occupancy Building Unit: 3,002' northwest

In accordance with a request from Jay Knutson of EnCana Oil & Gas (USA) Inc., Washburn Land Surveying, LLC has determined the location of the **Sullivan 4B-26H-P268** well site to be SHL: 567' FSL and 559' FEL, (BHL: 2160' FSL and 2272' FEL), as measured at ninety (90) degrees from the section lines of Section 23 and Section 26, Township 2 North, Range 68 West of the 6th Principal Meridian, Weld County Colorado.

Notes:

- 1) Bearings and distances based on NAD 83 Colorado North State Plane Coordinate, using RTK GPS observations taken 7/7/14 by operator Ryan Christi.
- 2) Conversion factor to ground (1.0002744738).
- 3) Elevations based on NAVD 88 GPS heights and Geoid 2009 corrections.
- 4) See Location Drawing for visible improvements within 500 feet of Pad Site.
- 5) The surface use is a cultivated field.

NOTICE: According to Colorado law you must commence any legal action based upon any defect in this W.L.C. within three years after you first discover such defect. In no event may any action based upon any defect in this W.L.C. be commenced more than ten years from this said date of the certification shown hereon.

I hereby certify that this Well Location Certificate was prepared by me or under my direct supervision on 7/31/2014 for and on behalf of EnCana Oil & Gas (USA) Inc. That it is not a Land Survey Plat or an Improvement Survey Plat and that it is not to be relied upon for establishment of fences, buildings, or other future improvement lines.

John Robert McGeehee LSR36219
Well: Sullivan 4B-26H-P268 WLC