

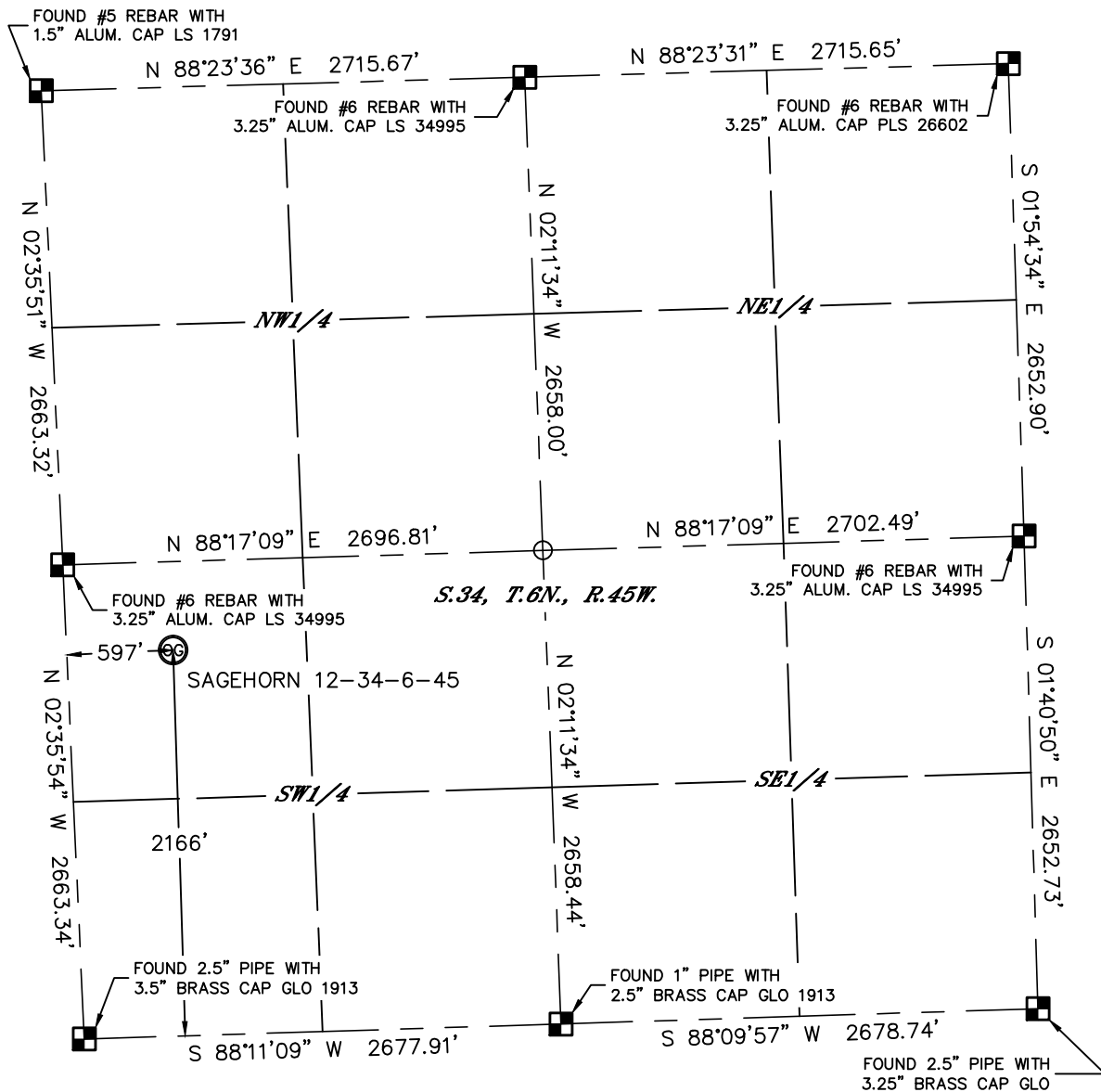


Lat40°, Inc. 1635 Foxtrail Drive, Suite 325 Loveland, CO 970-776-3321

WELL LOCATION CERTIFICATE

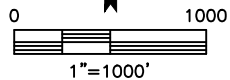
THIS MAP DOES NOT REPRESENT A BOUNDARY SURVEY

SECTION: 34
TOWNSHIP: 6N
RANGE: 45W



In accordance with a request from Michelle Lewis with OMIMEX PETROLEUM, INC. Lat40°, Inc. has determined the surface location of the SAGEHORN 12-34-6-45 to be 2166' from the SOUTH line and 597' from the WEST line as measured at right angles from the section lines of Section 34, Township 6 North, Range 45 West of the Sixth Principal Meridian, County of Phillips, State of Colorado.

I hereby state that this Well Location Certificate was prepared by me, or under my direct supervision, that the fieldwork was completed on 11/14/2014, for and on behalf of OMIMEX PETROLEUM, INC. That this is not a Land Survey Plat or an Improvement Survey Plat, and that it is not to be relied upon for establishment of fence, building, or other future improvement lines.



NOTE:

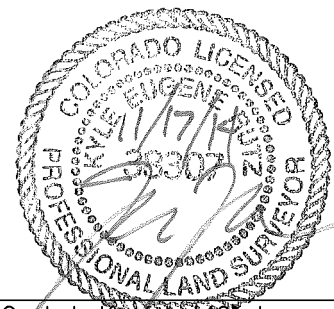
- 1) Bearings shown are Grid Bearings of the Colorado State Plane Coordinate System, North Zone, North American Datum 1983. The lineal dimensions as contained herein are based upon the "U.S. Survey Foot."
- 2) Ground elevations are based on an observed GPS elevation (NAVD 1988 DATUM).
- 3) IMPROVEMENTS: See LOCATION DRAWING for all visible improvements within 500' of disturbed area.
- 4) SURFACE USE: IRRIGATED CROP LAND
- 5) INSTRUMENT OPERATOR: ADAM BEAUPREZ
- 6) NEAREST CULTURAL ITEMS:
BUILDING: ±2501' SW
BUILDING UNIT: ±2569' SW
HIGH OCCUPANCY BUILDING UNIT: +5280'
DESIGNATED OUTSIDE ACTIVITY AREA: +5280'
PUBLIC ROAD: ±590' W (CR 31)
ABOVEGROUND UTILITY: ±2189' S
RAILROAD: +5280'
PROPERTY LINE: ±496' N

LEGEND

- = ALIQUOT MONUMENT AS DESCRIBED
○ = CALCULATED POSITION

SURFACE LOCATION

LAT: 40.44559°N
LONG: 102.37607°W
PDOP: 2.0
ELEV: 3797'
1/4, 1/4: NWSW



Kyle E. Rutz—On behalf of Lat40°, Inc.
Colorado Licensed Professional
Land Surveyor No. 38307

DATE: rev11/14/2014
PROJECT#: 2014138