

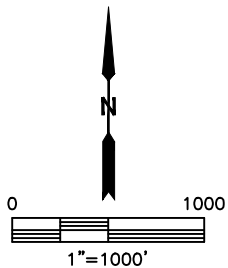
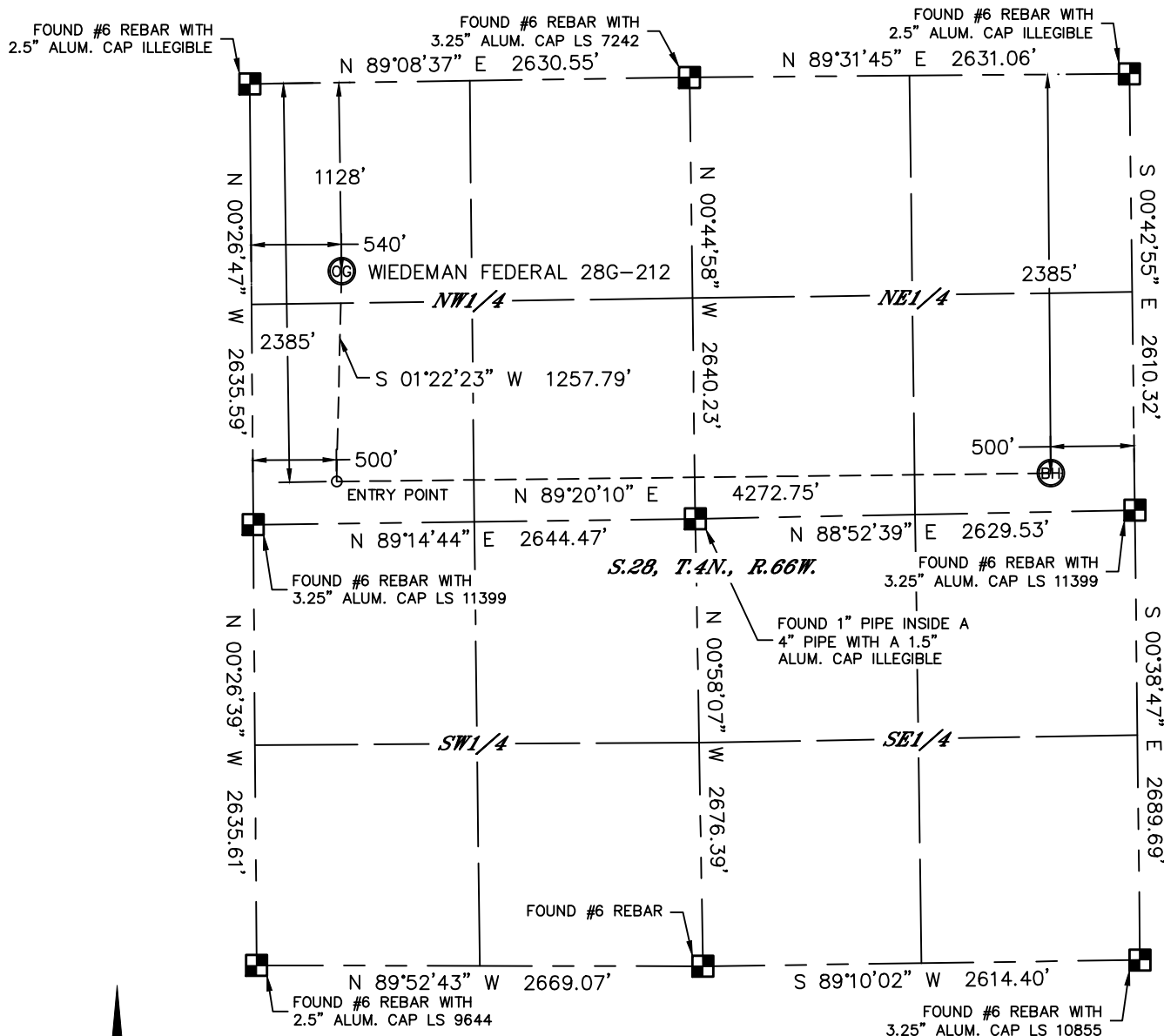


Lat40°, Inc. 1635 Foxtrail Drive, Suite 325 Loveland, CO 970-776-3321

# WELL LOCATION CERTIFICATE

THIS MAP DOES NOT REPRESENT A BOUNDARY SURVEY

SECTION: 28  
TOWNSHIP: 4N  
RANGE: 66W



In accordance with a request from Mac Neumann with PDC ENERGY Lat40°, Inc. has determined the surface location of the WIEDEMAN FEDERAL 28G-212 to be 1128' from the NORTH line and 540' from the WEST line and the bottom hole to be 2385' from the NORTH line and 500' from the EAST line as measured at right angles from the section lines of Section 28, Township 4 North, Range 66 West of the Sixth Principal Meridian, County of Weld, State of Colorado.

I hereby state that this Well Location Certificate was prepared by me, or under my direct supervision, that the fieldwork was completed on 6/25/2014, for and on behalf of PDC ENERGY. That this is not a Land Survey Plat or an Improvement Survey Plat, and that it is not to be relied upon for establishment of fence, building, or other future improvement lines.

## NOTE:

- 1) Bearings shown are Grid Bearings of the Colorado State Plane Coordinate System, North Zone, North American Datum 1983. The lined dimensions as contained herein are based upon the "U.S. Survey Foot."
- 2) Ground elevations are based on an observed GPS elevation (NAVD 1988 DATUM).
- 3) IMPROVEMENTS: See LOCATION DRAWING for all visible improvements within 500' of disturbed area.
- 4) SURFACE USE: CROP LAND
- 5) INSTRUMENT OPERATOR: ADAM KELLY
- 6) NEAREST CULTURAL ITEMS:  
BUILDING: ±668' SW  
BUILDING UNIT: ±686' SW  
HIGH OCCUPANCY BUILDING UNIT: ±3078' NE  
DESIGNATED OUTSIDE ACTIVITY AREA: 5280'+  
PUBLIC ROAD: (CR 29) 514' W  
ABOVEGROUND UTILITY: 505' W  
RAILROAD: ±4083' SE  
PROPERTY LINE: 413' S

## LEGEND

- = ALIQUOT MONUMENT AS DESCRIBED
- = CALCULATED POSITION

## SURFACE LOCATION

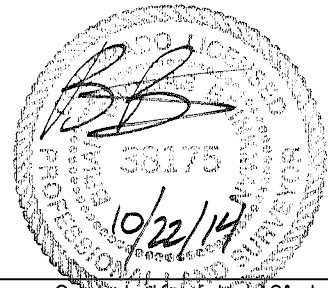
LAT: 40.28676°N  
LONG: 104.78997°W  
PDOP: 2.0  
ELEV: 4761'  
1/4,1/4: NWNW

## ENTRY POINT

LAT: 40.28331°N  
LONG: 104.79012°W

## BOTTOM HOLE

LAT: 40.28335°N  
LONG: 104.77481°W

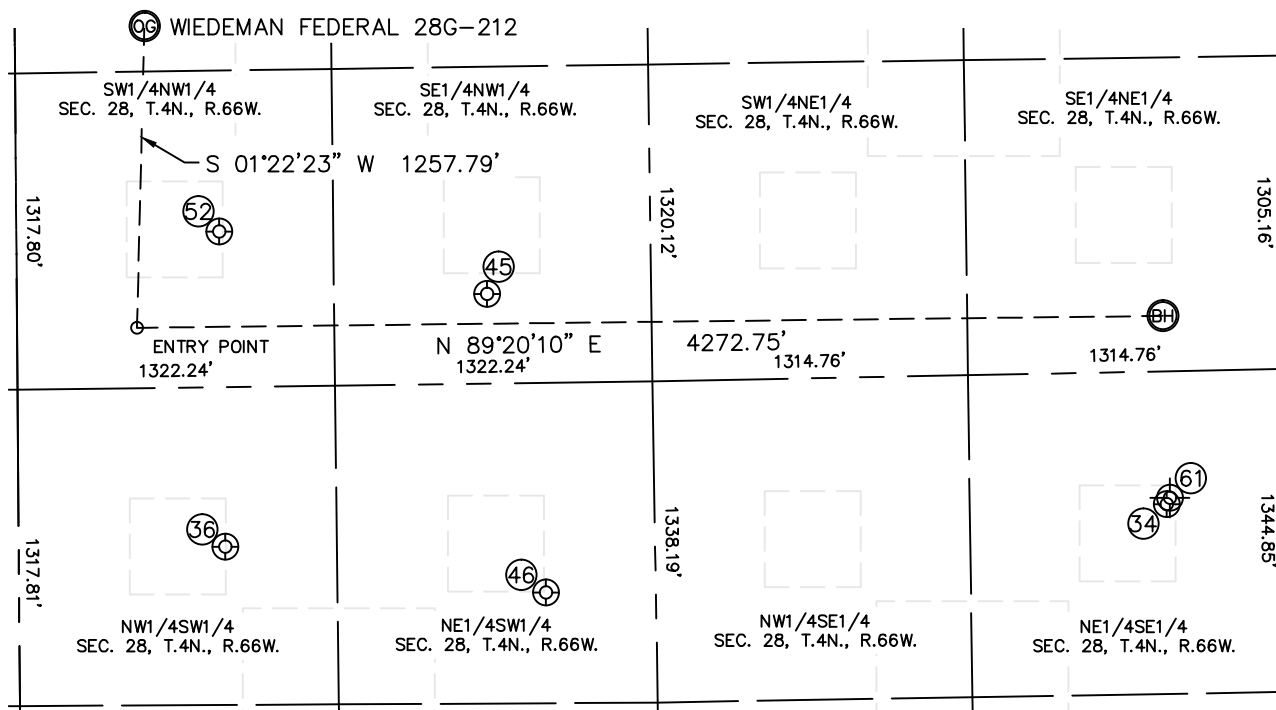


Brian T. Brinkman—On behalf of Lat40°, Inc.  
Colorado Licensed Professional  
Land Surveyor No. 38175  
DATE: 10/22/2014  
PROJECT#: 2014114

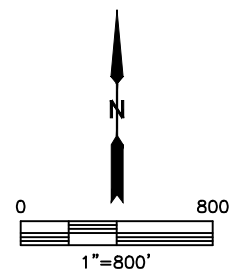
## SITE SKETCH

WIEDEMAN FEDERAL 28G-212

SECTION: 28  
TOWNSHIP: 4N  
RANGE: 66W



WELL NO.	WELL NAME	SHL FOOTAGE				SHL LAT°	SHL LONG°	PDOP	ELEV (FT.)	1/4/1/4
34	MELISSA 1	2134	FSL	494	FEL	40.28120	-104.77477	2.3	4748	NESE
36	DANNY B 12-28	1984	FSL	860	FWL	40.28080	-104.78883	1.8	4759	NWSW
45	KEISER 22-28	2266	FNL	1959	FWL	40.28366	-104.78489	1.8	4749	SENW
46	RANDALL 11-28	1795	FSL	2194	FWL	40.28024	-104.78405	1.9	4754	NESW
52	KORWICK 5-28	1990	FNL	845	FWL	40.28440	-104.78888	2.1	4758	SWNW
61	LORENZ 43-28	2160	FSL	480	FEL	40.28115	-104.77474	N/A	4744	NESE



NOTE: THE ABANDONED WELL DATA SHOWN IN RED ABOVE WAS OBTAINED FROM COGCC SCOUT CARDS.

DATE: 10/22/2014  
PROJECT#: 2014114