

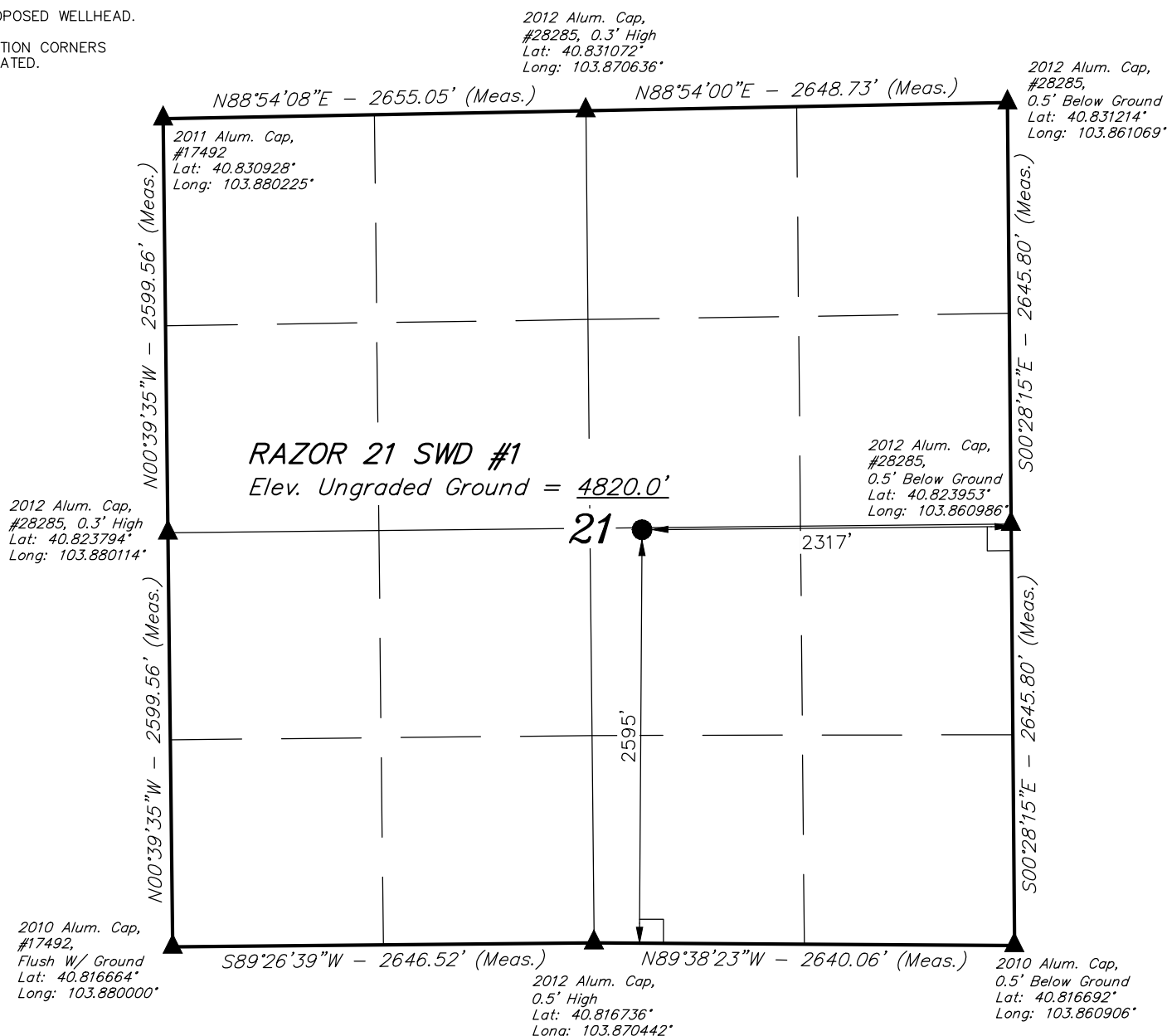
LEGEND:

└─ = 90° SYMBOL

● = PROPOSED WELLHEAD.

▲ = SECTION CORNERS LOCATED.

T10N, R58W, 6th P.M.



PDOP = 1.7

**NAD 83 (SURFACE LOCATION)**

LATITUDE = 40°49'25.87" (40.823853)
LONGITUDE = 103°52'09.68" (103.869356)

NAD 27 (SURFACE LOCATION)

LATITUDE = 40°49'25.92" (40.823867)
LONGITUDE = 103°52'07.87" (103.868853)

BASIS OF BEARINGS

BASIS OF BEARINGS IS A G.P.S. OBSERVATION

BASIS OF ELEVATION

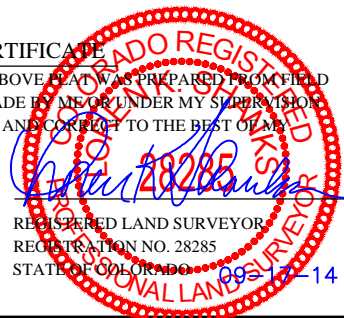
SPOT ELEVATION LOCATED AT THE NORTHEAST CORNER OF SECTION 15, T9N, R58W, 6th P.M. TAKEN FROM THE GATEHOOK SPRING, QUADRANGLE, COLORADO, WELD COUNTY, 7.5 MINUTE QUAD (TOPOGRAPHIC MAP) PUBLISHED BY THE UNITED STATES DEPARTMENT OF THE INTERIOR, GEOLOGICAL SURVEY. SAID ELEVATION IS MARKED AS BEING 4679 FEET.



UELS, LLC
Corporate Office * 85 South 200 East
Vernal, UT 84078 * (435) 789-1017

**CERTIFICATE**

THIS IS TO CERTIFY THAT THE ABOVE PLAT WAS PREPARED FROM FIELD NOTES OF ACTUAL SURVEYS MADE BY ME OR UNDER MY SUPERVISION AND THAT THE SAME ARE TRUE AND CORRECT TO THE BEST OF MY KNOWLEDGE AND BELIEF.

**WHITING OIL & GAS CORP.**

RAZOR 21 SWD #1
NW 1/4 SE 1/4, SECTION 21, T10N, R58W, 6th P.M.
WELD COUNTY, COLORADO

SURVEYED BY: DALLAS NIELSEN, J.S.	DATE: 08-20-14
DRAWN BY: K.B.	DATE DRAWN: 08-21-14
SCALE: 1" = 1000'	REVISED: 00-00-00
WELL LOCATION PLAT	