

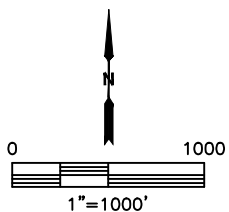
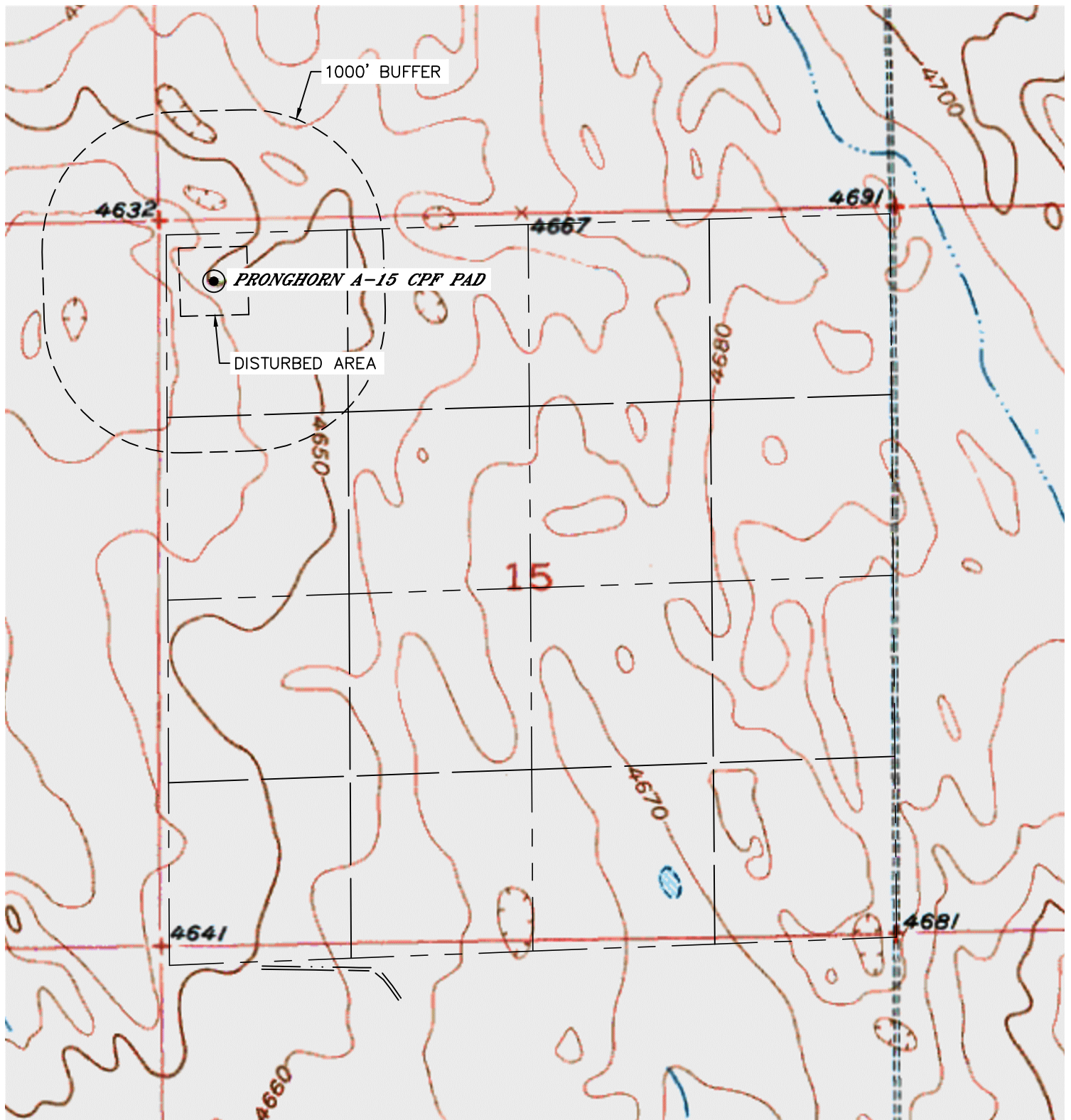


Lat40°, Inc. 6250 W. 10th Street, Unit 2, Greeley, CO 970-515-5294

# HYDROLOGY MAP

## PRONGHORN A-15 CPF PAD

SECTION: 15  
TOWNSHIP: 5N  
RANGE: 61W  
6TH. P.M.  
WELD COUNTY, CO



NO VISIBLE SURFACE WATER WITHIN 1000'

DATE: 10/31/2014  
PROJECT#: 2012073