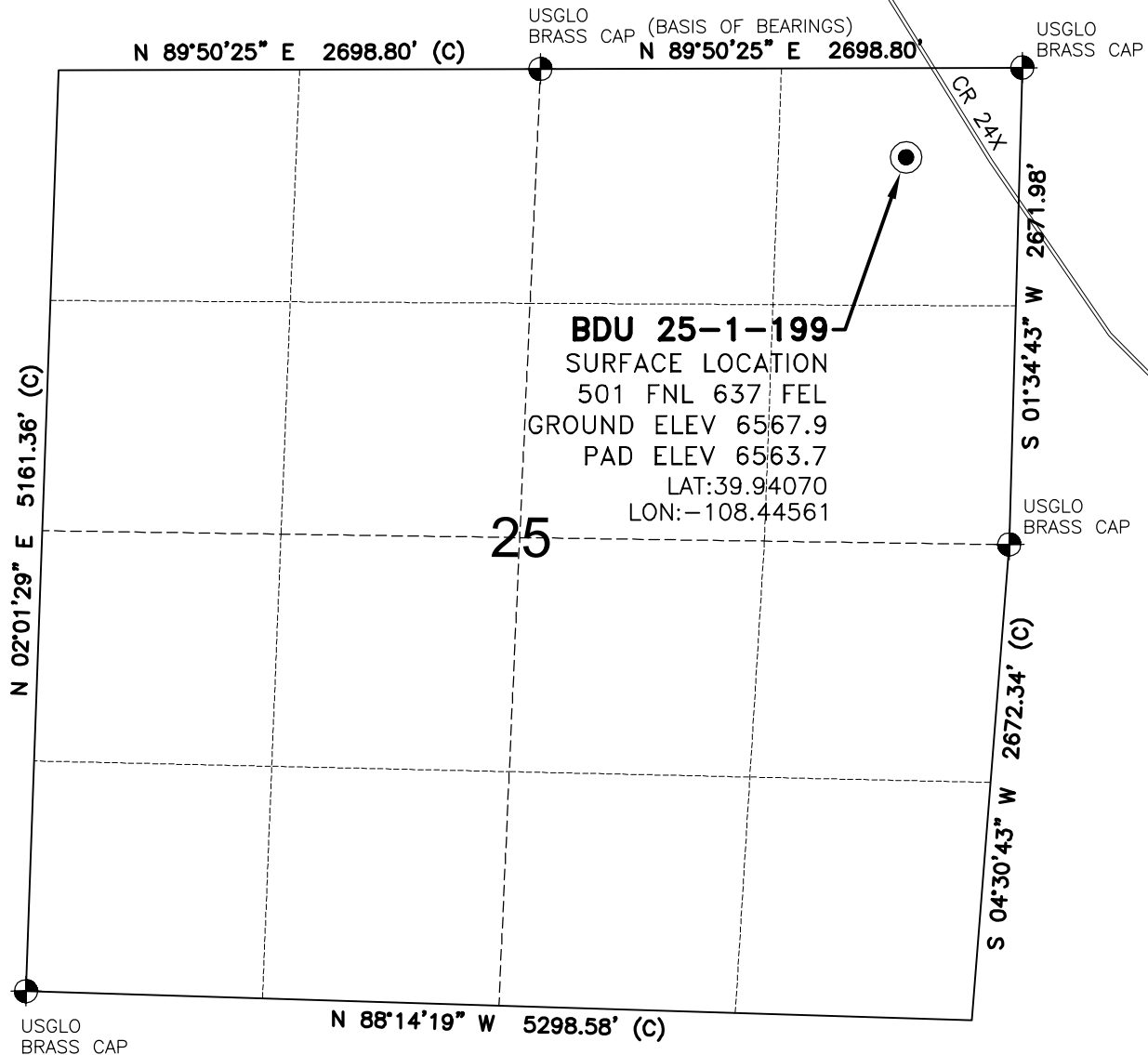


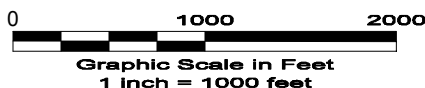
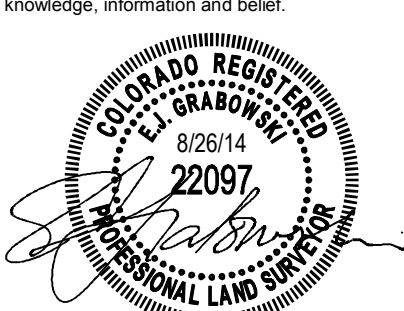
# WELL LOCATION MAP

BDU 25-1-199 PAD



## SURVEYOR'S STATEMENT

The undersigned hereby states that the well location shown hereon was staked on the ground based on existing monumentation and/or physical evidence found in the field and is correct to the best of my knowledge, information and belief.



## NOTES

- 1.) Horizontal and vertical datum, based on NGS control point "KM 0280" with an elevation of 6434. NAVD 1988.
  - 2.) All directions, distances, and dimensions shown hereon are based on coordinates from the "Colorado coordinate system of 1983 north zone" (article 52 of title 38, C.R.S.).
  - 3.) All section line dimensions shown hereon are based on field measurements of existing monuments and/or physical evidence found in the field unless otherwise indicated. Refer to land survey plats deposited in Rio Blanco County & BLM Survey.
  - 4.) Physical features shown hereon are for graphical representation only.
  - 5.) See Form 2A for visible improvements within 500' of wellhead.
  - 6.) Distances to nearest section lines are measured perpendicularly.
  - 7.) This is not a land survey nor land survey plat.
  - 8.) Date of Survey 11/4/10 Date of Drawing 8/26/14. REV 4
- PDOP Reading: 3.7 Instrument Operator: E.J.G

8/26/14



LAND SURVEYING AND MAPPING  
LAFAYETTE - WINTER PARK  
Ph 303 666 0379 Fx 303 665 6320

MESA ENERGY PARTNERS, LLC  
BDU 25-1-199

NE1/4 NE1/4 SEC. 25 T1S R99W  
6th PM RIO BLANCO COUNTY COLORADO