

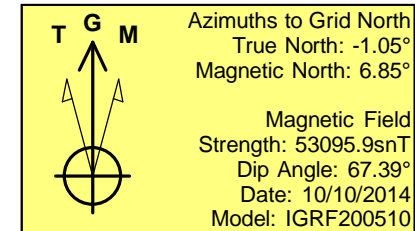
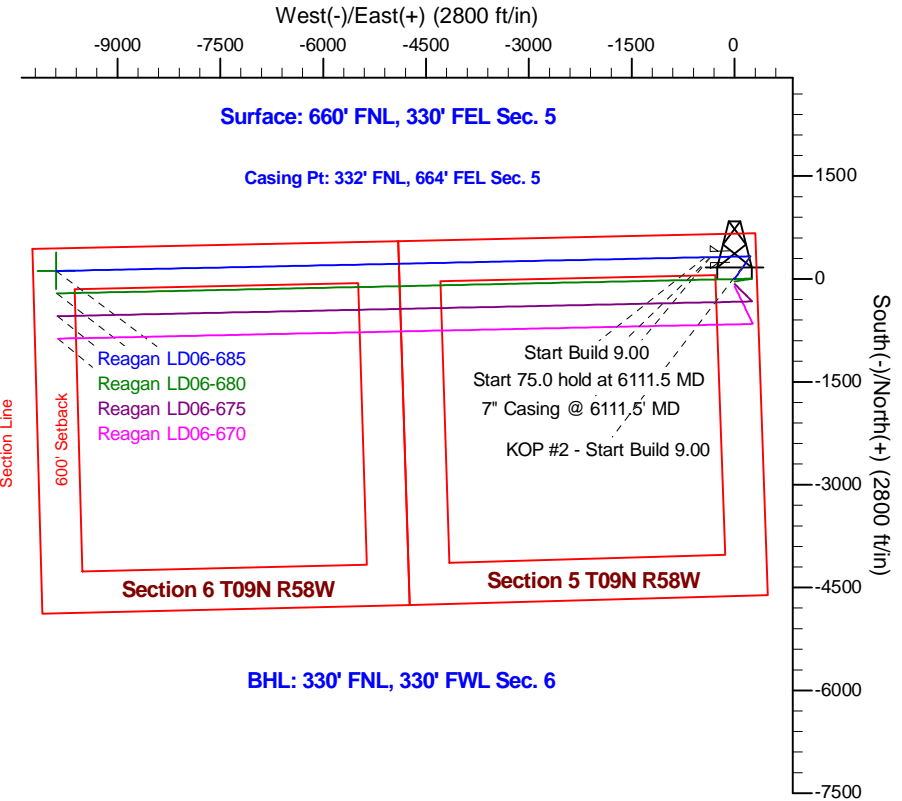
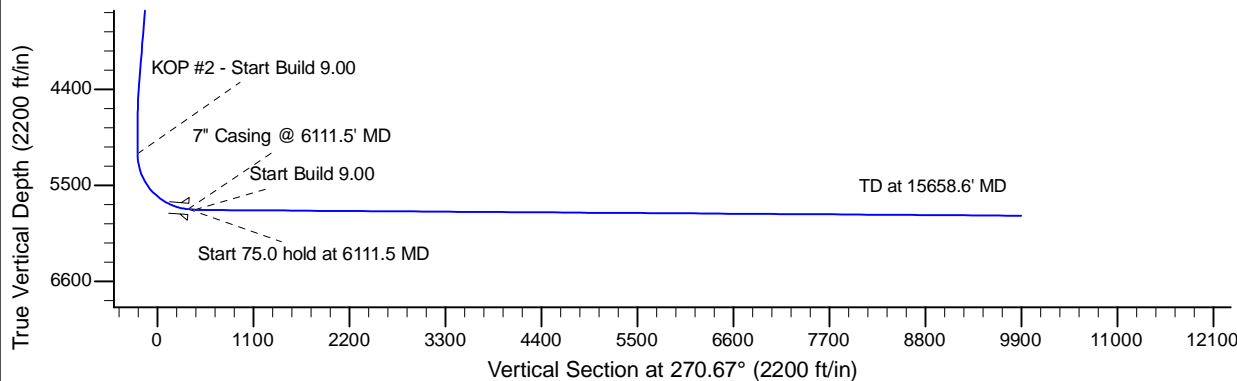
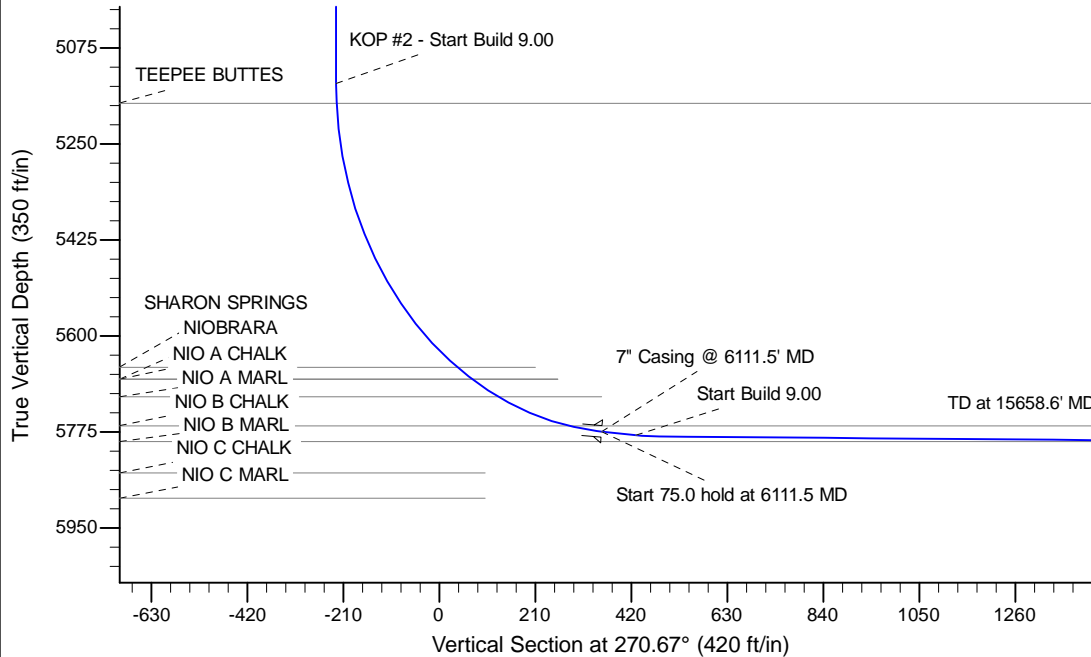
Project: Wattenberg Field  
 Site: LD (Sec.5-T09N-R58W) Weld County, CO  
 Well: Reagan LD06-685  
 Wellbore: Original Drilling  
 Design: APD - Rev 0

# Northern Region Drilling - Working

Geodetic System: US State Plane 1983  
 Datum: North American Datum 1983  
 Ellipsoid: GRS 1980  
 Zone: Colorado Northern Zone  
 System Datum: Mean Sea Level

## SECTION DETAILS

Sec	MD	Inc	Azi	TVD	+N/-S	+E/-W	Dleg	TFace	VSec	Target
1	0.0	0.00	0.00	0.0	0.0	0.0	0.00	0.00	0.0	
2	1500.0	0.00	0.00	1500.0	0.0	0.0	0.00	0.00	0.0	
3	1900.4	8.01	34.88	1899.1	22.9	16.0	2.00	34.88	-15.7	
4	4386.4	8.01	34.88	4360.9	307.1	214.0	0.00	0.00	-210.4	
5	4786.9	0.00	0.00	4760.0	330.0	230.0	2.00	180.00	-226.1	
6	5167.0	0.00	0.00	5140.2	330.0	230.0	0.00	0.00	-226.1	
7	6111.5	85.00	268.79	5774.4	317.7	-351.0	9.00	268.79	354.7	
8	6186.5	85.00	268.79	5780.9	316.2	-425.7	0.00	0.00	429.4	
9	6237.6	89.60	268.79	5783.3	315.1	-476.7	9.00	0.00	480.4	
10	15658.6	89.60	268.79	5849.1	116.4	-9895.4	0.00	0.00	9896.1	Reagan LD06-685 BHL 330'FNL, 330'FWL



WELL DETAILS: Reagan LD06-685					
Ground Level: 4755.0					
0.0	0.0	Northing	Easting	Latitude	Longitude
		1533212.49	3448480.48	40.785810	-103.880410
Plan: APD - Rev 0 (Reagan LD06-685/Original Drilling)					
Created By: Shailey Jewell			Date: 9:37, October 10 2014		
OK to submit with 2A as per Noble Drilling					
10/10/2014 11:04					