

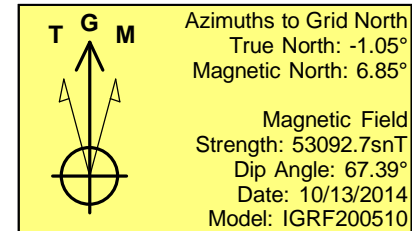
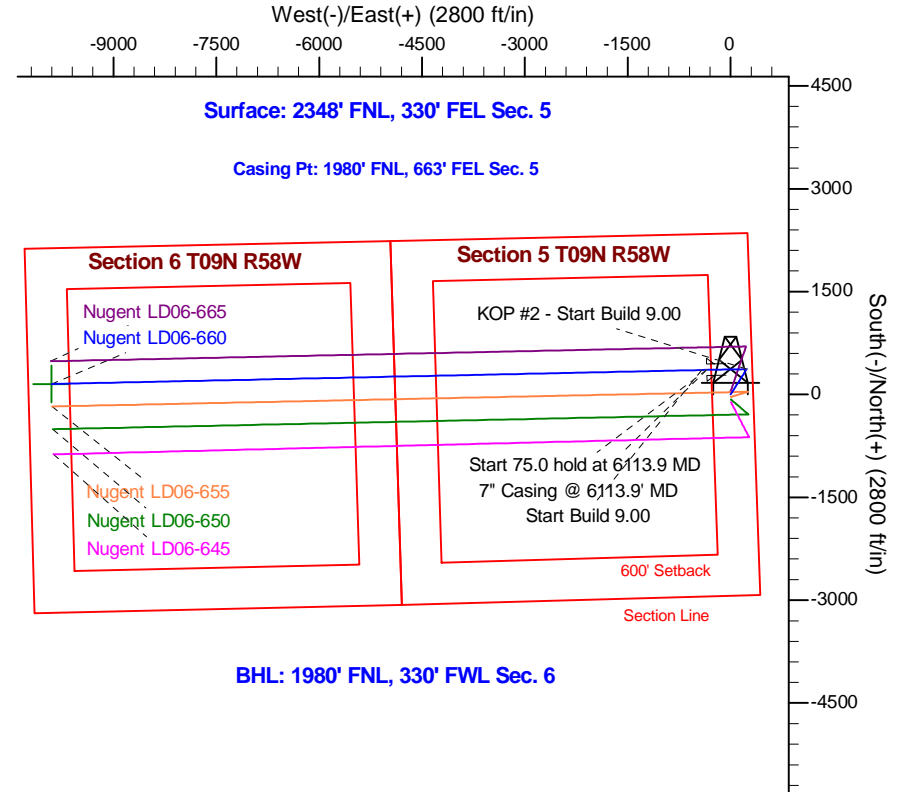
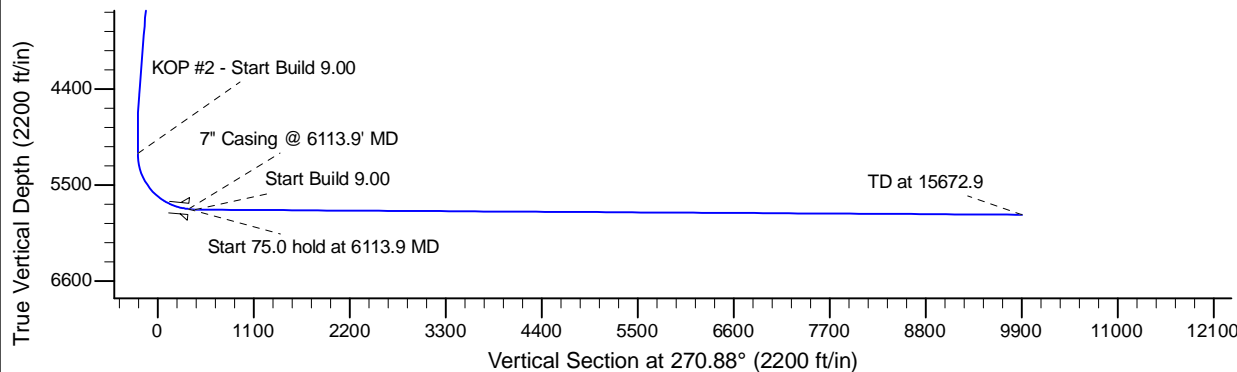
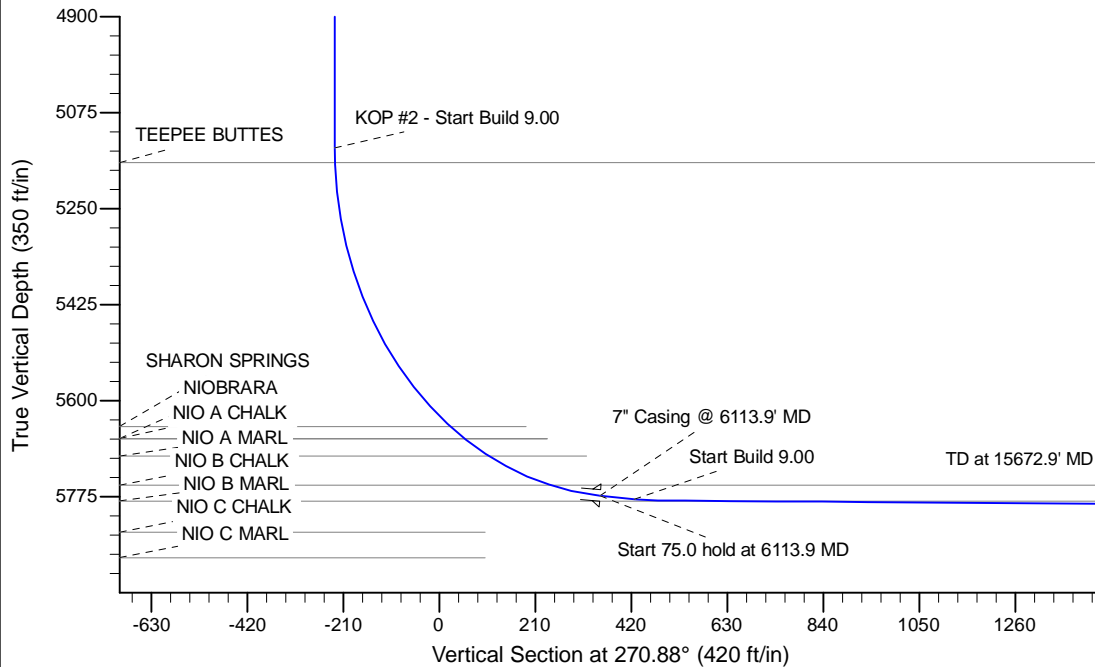
Project: Wattenberg Field
 Site: LD (Sec.5-T09N-R58W) Weld County, CO
 Well: Nugent LD06-660
 Wellbore: Original Drilling
 Design: APD - Rev 0

Northern Region Drilling - Working

Geodetic System: US State Plane 1983
 Datum: North American Datum 1983
 Ellipsoid: GRS 1980
 Zone: Colorado Northern Zone
 System Datum: Mean Sea Level

SECTION DETAILS

Sec	MD	Inc	Azi	TVD	+N/-S	+E/-W	Dleg	TFace	VSec	Target
1	0.0	0.00	0.00	0.0	0.0	0.0	0.00	0.00	0.0	
2	1500.0	0.00	0.00	1500.0	0.0	0.0	0.00	0.00	0.0	
3	1920.7	8.41	32.42	1919.2	26.0	16.5	2.00	32.42	-16.1	
4	4495.1	8.41	32.42	4465.8	344.0	218.5	0.00	0.00	-213.1	
5	4915.7	0.00	0.00	4885.0	370.0	235.0	2.00	180.00	-229.3	
6	5169.5	0.00	0.00	5138.7	370.0	235.0	0.00	0.00	-229.3	
7	6113.9	85.00	268.77	5772.9	357.5	-346.0	9.00	268.77	351.5	
8	6188.9	85.00	268.77	5779.5	355.9	-420.7	0.00	0.00	426.1	
9	6240.6	89.65	268.77	5781.9	354.8	-472.3	9.00	0.00	477.7	
10	15672.9	89.65	268.77	5839.5	152.7	-9902.3	0.00	0.00	9903.5	Nugent LD06-660 BHL 1980'FNL, 330'FWL



WELL DETAILS: Nugent LD06-660					
Ground Level:4761.0					
		Northing	Easting	Latitude	Longitude
0.0	0.0	1531526.30	3448533.44	40.781180	-103.880330
Plan: APD - Rev 0 (Nugent LD06-660/Original Drilling)					
Created By: Shailey Jewell			Date: 15:46, October 13 2014		
OK to submit with 2A as per Noble Drilling					
10/13/2014 4:36					