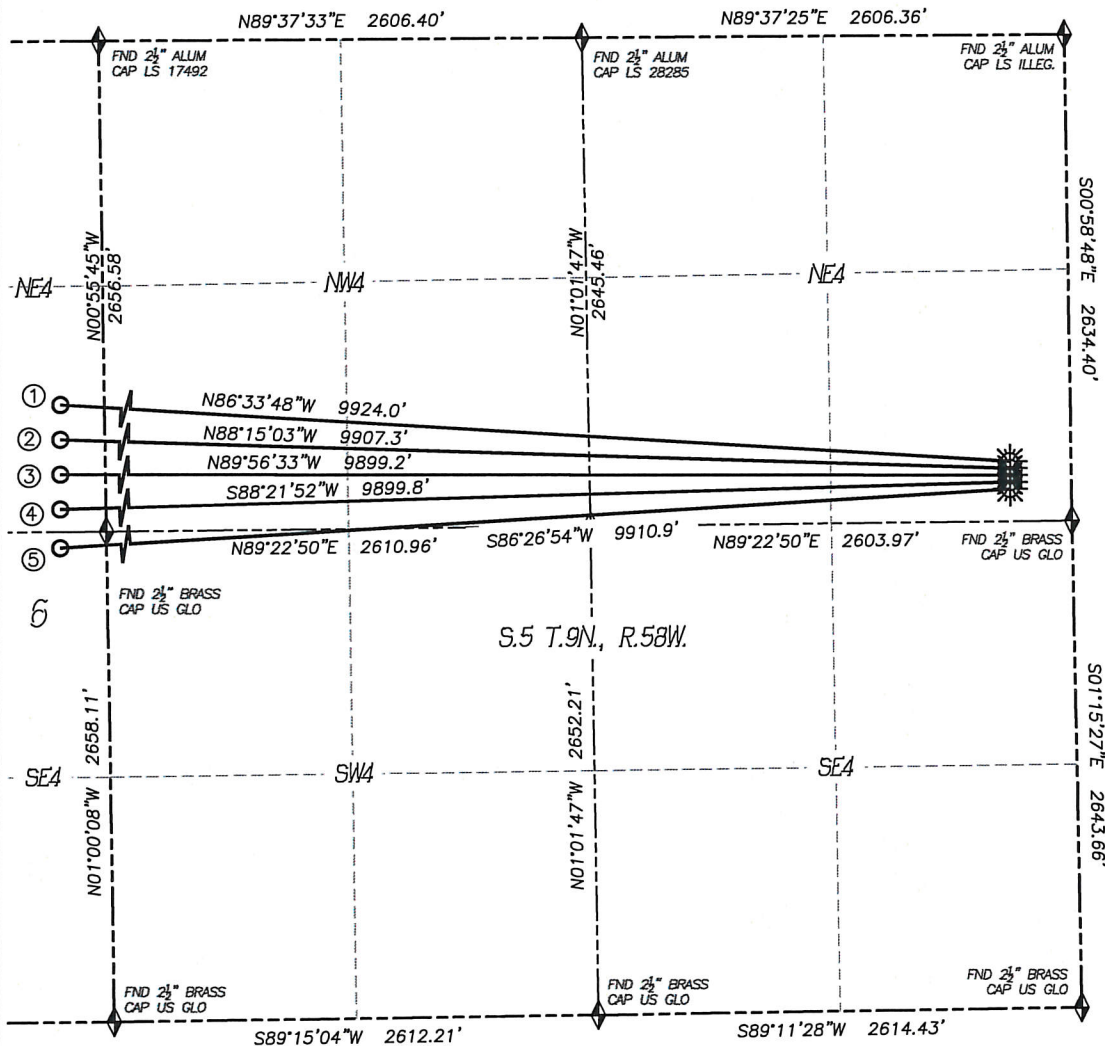


MULTI-WELL PLAN NUGENT LD06-665 PAD

SECTION: 5
TOWNSHIP: 9N
RANGE: 58W
SE4/NE4



0 500 1000
SCALE: 1" = 1000'

LEGEND

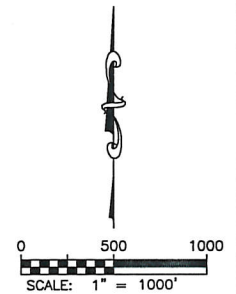
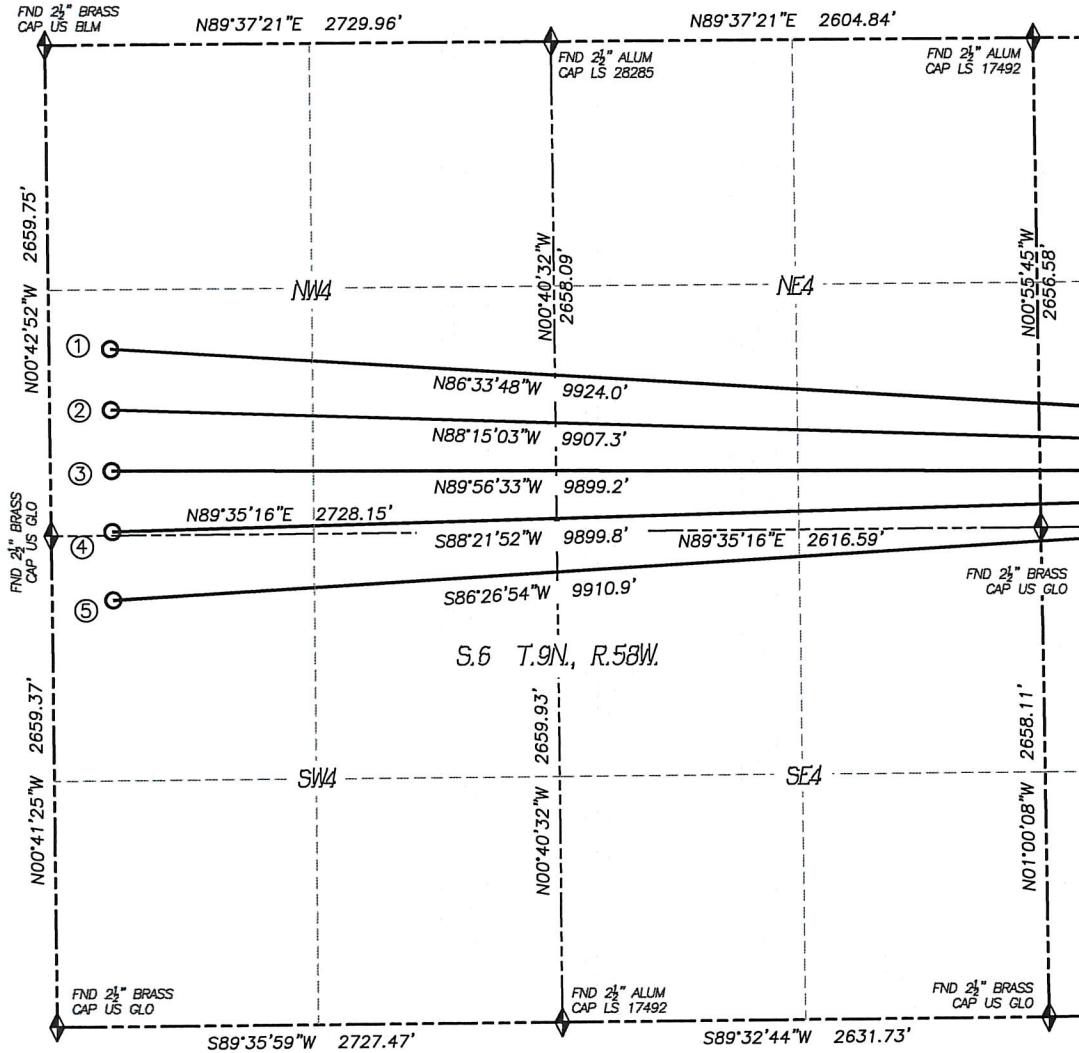
- ◆ FOUND MONUMENT
- ◇ CALCULATED POSITION
- ☀ PROPOSED WELL
- BOTTOM HOLE
- ⊙ ABANDONED WELL
- ⊗ EXISTING WELL

BOTTOM HOLE DATA

	Well Name	Footage		Latitude	Longitude	Qtr/Qtr
1	Nugent LD06-665	1650' FNL	330' FWL	40.78300°	-103.91608°	SW NW, Gov't Lot 5
2	Nugent LD06-660	1980' FNL	330' FWL	40.78209°	-103.91607°	SW NW, Gov't Lot 5
3	Nugent LD06-655	2310' FNL	330' FWL	40.78119°	-103.91606°	SW NW, Gov't Lot 5
4	Nugent LD06-650	2640' FNL	330' FWL	40.78028°	-103.91605°	SW NW, Gov't Lot 5
5	Nugent LD06-645	2310' FSL	330' FWL	40.77927°	-103.91604°	NW SW, Gov't Lot 6

MULTI-WELL PLAN NUGENT LD06-665 PAD

SECTION: 5
TOWNSHIP: 9N
RANGE: 58W
SE4/NE4



LEGEND

- ◆ FOUND MONUMENT
- ◻ CALCULATED POSITION
- ☼ PROPOSED WELL
- BOTTOM HOLE
- ⊗ ABANDONED WELL
- ⊙ EXISTING WELL

BOTTOM HOLE DATA

	Well Name	Footage	Latitude	Longitude	Qtr/Qtr
1	Nugent LD06-665	1650' FNL 330' FWL	40.78300°	-103.91608°	SW NW, Gov't Lot 5
2	Nugent LD06-660	1980' FNL 330' FWL	40.78209°	-103.91607°	SW NW, Gov't Lot 5
3	Nugent LD06-655	2310' FNL 330' FWL	40.78119°	-103.91606°	SW NW, Gov't Lot 5
4	Nugent LD06-650	2640' FNL 330' FWL	40.78028°	-103.91605°	SW NW, Gov't Lot 5
5	Nugent LD06-645	2310' FSL 330' FWL	40.77927°	-103.91604°	NW SW, Gov't Lot 6

MULTI-WELL PLAN
NUGENT LD06-665 PAD

SECTION: 5
TOWNSHIP: 9N
RANGE: 58W
SE4/NE4



0 200
SCALE: 1" = 200'