

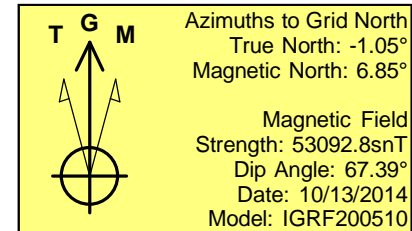
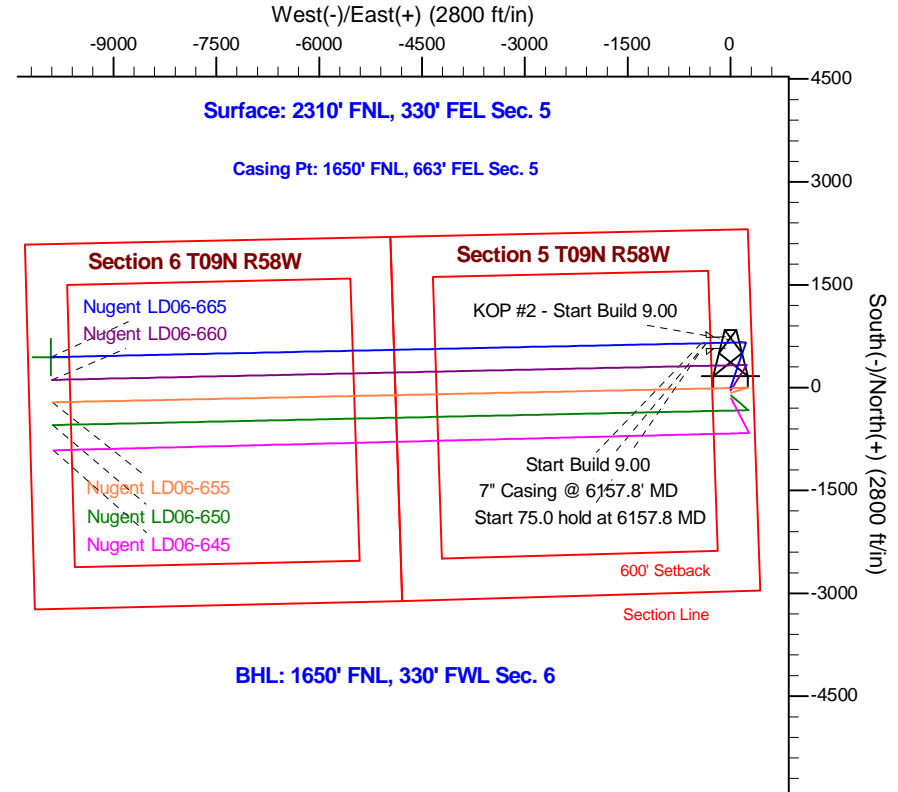
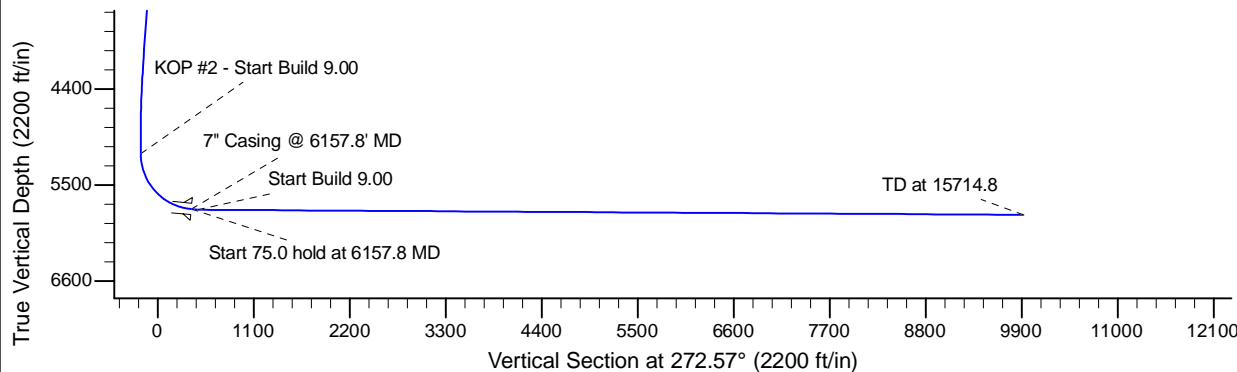
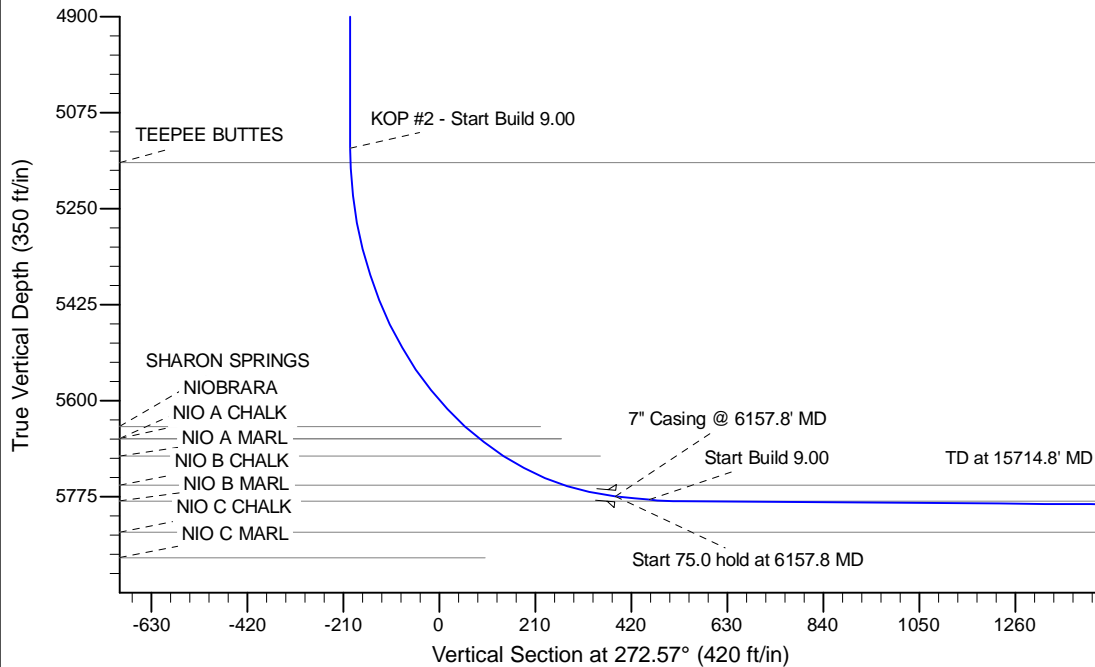
Project: Wattenberg Field
 Site: LD (Sec.5-T09N-R58W) Weld County, CO
 Well: Nugent LD06-665
 Wellbore: Original Drilling
 Design: APD - Rev 0

Northern Region Drilling - Working

Geodetic System: US State Plane 1983
 Datum: North American Datum 1983
 Ellipsoid: GRS 1980
 Zone: Colorado Northern Zone
 System Datum: Mean Sea Level

SECTION DETAILS

Sec	MD	Inc	Azi	TVD	+N/-S	+E/-W	Dleg	TFace	Vsect	Target
1	0.0	0.00	0.00	0.0	0.0	0.0	0.00	0.00	0.0	
2	1200.0	0.00	0.00	1200.0	0.0	0.0	0.00	0.00	0.0	
3	1846.9	12.94	18.82	1841.4	68.8	23.5	2.00	18.82	-20.4	
4	4311.6	12.94	18.82	4243.6	591.2	201.5	0.00	0.00	-174.9	
5	4958.5	0.00	0.00	4885.0	660.0	225.0	2.00	180.00	-195.2	
6	5213.4	0.00	0.00	5139.8	660.0	225.0	0.00	0.00	-195.2	
7	6157.8	85.00	268.78	5774.0	647.6	-356.0	9.00	268.78	384.6	
8	6232.8	85.00	268.78	5780.6	646.0	-430.7	0.00	0.00	459.2	
9	6284.5	89.65	268.78	5783.0	644.9	-482.3	9.00	0.00	510.7	
10	15714.8	89.65	268.78	5840.6	444.1	-9910.3	0.00	0.00	9920.2	Nugent LD06-665 BHL 1650'FNL, 330'FWL



WELL DETAILS: Nugent LD06-665					
Ground Level: 4761.0					
	Northing	Easting	Latitude	Longitude	
0.0	0.0	1531566.37	3448532.71	40.781290	-103.880330
Plan: APD - Rev 0 (Nugent LD06-665/Original Drilling)					
Created By: Shailey Jewell			Date: 15:51, October 13 2014		
OK to submit with 2A as per Noble Drilling					
10/13/2014 4:37					