

DIAMOND TESTING, LLC
P.O. Box 157
HOISINGTON, KANSAS 67544
(620) 653-7550 • (800) 542-7313
BIGWAMPUM10DST2

Page 1 of 2 Pages

Company Wiepking-Fullerton Energy, LLC Lease & Well No. Big Wampum No. 10
Elevation 5397 KB Formation Torch Effective Pay Ft. Ticket No. A104
Date 10-1-14 Sec. 23 Twp. 10S Range 56W County Lincoln State Colorado
Test Approved By Greg Smith Diamond Representative Andy Carreira

Formation Test No. 2 Interval Tested from 7,198 ft. to 7,222 ft. Total Depth 7,354 ft.
Packer Depth 7,193 ft. Size 6 3/4 in. Packer Depth 7,222 ft. Size 6 3/4 in.
Packer Depth 7,198 ft. Size 6 3/4 in. Packer Depth ft. Size in.
Depth of Selective Zone Set 7,222 ft.

Top Recorder Depth (Inside)	<u>7,179</u> ft.	Recorder Number	<u>5585</u>	Cap.	<u>5,000</u> psi.
Bottom Recorder Depth (Outside)	<u>7,200</u> ft.	Recorder Number	<u>11004</u>	Cap.	<u>4,950</u> psi.
Below Straddle Recorder Depth	<u>7,229</u> ft.	Recorder Number	<u>8471</u>	Cap.	<u>10,000</u> psi.

Drilling Contractor <u>Murfin Drilling Company, Inc. - Rig 25</u>	Drill Collar Length	<u>555</u> ft.	I.D.	<u>2 1/4</u> in.
Mud Type <u>Chemical</u> Viscosity <u>85</u>	Weight Pipe Length	<u> </u> ft.	I.D.	<u> </u> in.
Weight <u>9.1</u> Water Loss <u>8.0</u> cc.	Drill Pipe Length	<u>6,608</u> ft.	I.D.	<u>3 1/2</u> in.
Chlorides <u>350</u> P.P.M.	Test Tool Length	<u>35</u> ft.	Tool Size	<u>3 1/2-IF</u> in.
Jars: Make <u>Sterling</u> Serial Number <u>9</u>	Anchor Length	<u>24' perf. w/132' tail pipe</u>	Size	<u>4 1/2-FH</u> in.
Did Well Flow? <u>No</u> Reversed Out <u>No</u>	Surface Choke Size	<u>1</u> in.	Bottom Choke Size	<u>5/8</u> in.
	Main Hole Size	<u>7 7/8</u> in.	Tool Joint Size	<u>4 1/2-XH</u> in.

Blow: 1st Open: Blow increasing to 4 3/4 ins. in 5 mins., then decreasing to 3 1/4 ins. No blow back during shut-in.

2nd Open: No blow. No blow back during shut-in.

Recovered 300 ft. of drilling mud = 1.476000 bbls. (Grind out: 100%-mud)

Recovered ft. of

Recovered ft. of

Recovered ft. of

Recovered ft. of

Recovered ft. of

Remarks Tool Sample Grind Out: 100%-mud

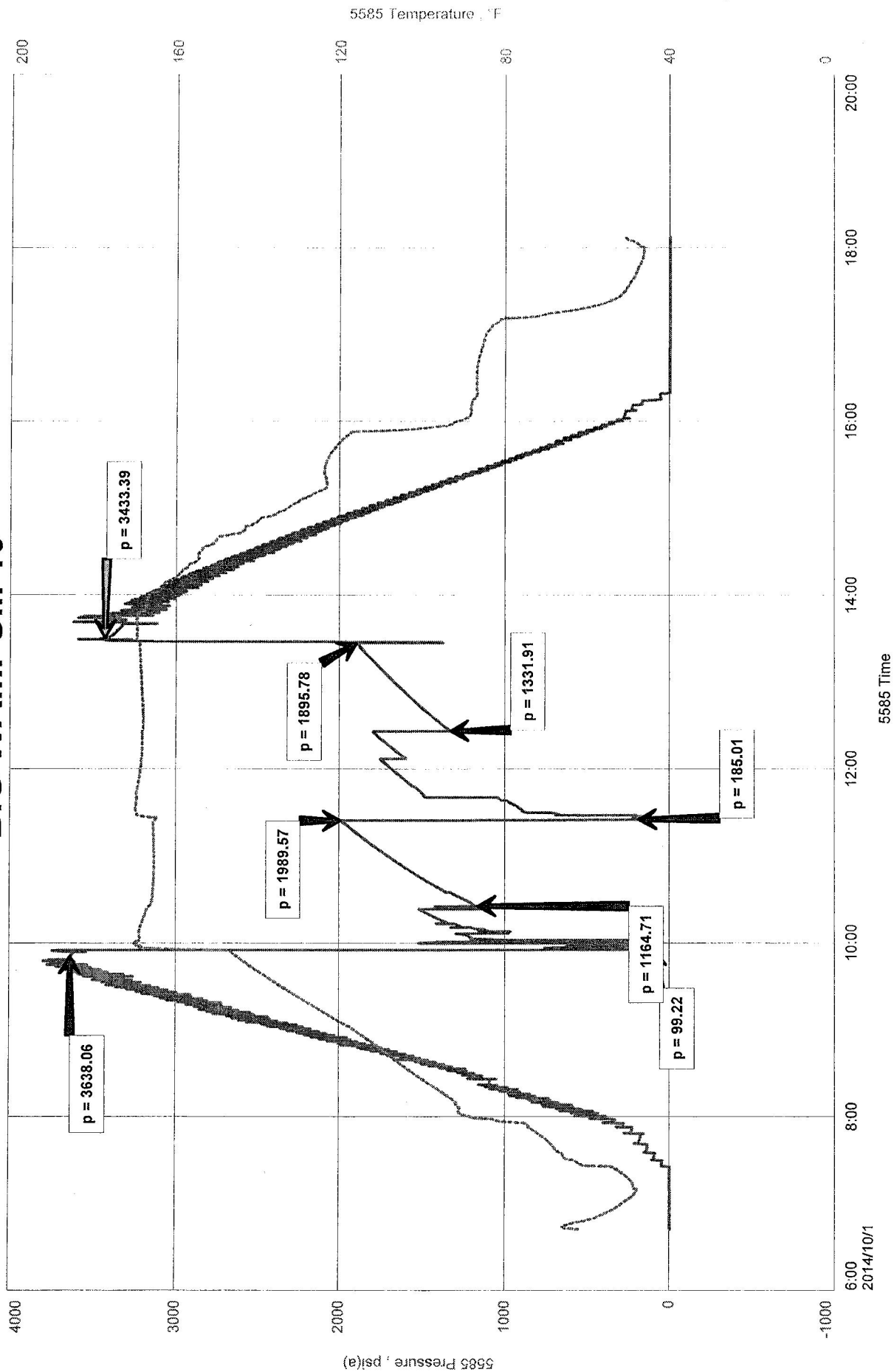
Sampler: Pressure = 0 200 ml-gas; 3,800 ml-mud

Time Set Packer(s) <u>9:55 A.M.</u>	Time Started off Bottom <u>1:25 P.M.</u>	Maximum Temperature <u> </u>
Initial Hydrostatic Pressure.....(A) <u>3638</u> P.S.I.		
Initial Flow Period.....Minutes <u>30</u> (B) <u>99</u> P.S.I.	to (C) <u>1165</u> P.S.I.	
Initial Closed In Period.....Minutes <u>60</u> (D) <u>1990</u> P.S.I.		
Final Flow Period.....Minutes <u>60</u> (E) <u>185</u> P.S.I.	to (F) <u>1332</u> P.S.I.	
Final Closed In Period.....Minutes <u>60</u> (G) <u>1896</u> P.S.I.		
Final Hydrostatic Pressure.....(H) <u>3433</u> P.S.I.		

WIEPKING-FULLERTON ENERGY LLC
DST 2 TORCH 7198-7222
Start Test Date: 2014/10/01
Final Test Date: 2014/10/01

BIG WAMPUM 10
Formation: DST 2 TORCH 7198-7222
Pool: WILDCAT
Job Number: A104

BIG WAMPUM 10



WIEPKING-FULLERTON ENERGY LLC
DST 2 TORCH 7198-7222
Start Test Date: 2014/10/01
Final Test Date: 2014/10/01

BIG WAMPUM 10
Formation: DST 2 TORCH 7198-7222
Pool: WILDCAT
Job Number: A104

BIG WAMPUM 10

