

Verdad Oil & Gas Corporation

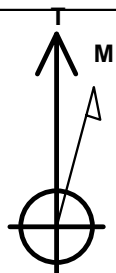
Well Name: **Meehl 01N-65W-24-9C**

Surface Location: Meehl 01N-65W-24 Pad Sec.24-T01N-R65W
North American Datum 1983 , US State Plane 1983 , Colorado Northern Zone
Ground Elevation: 5022.0

+N/-S	+E/-W	Northing	Easting	Latitude	Longitude	Slot
0.0	0.0	1255137.71	3249784.31	40.030292	-104.607991	
RKB - 16.5' WELL @ 5038.5ft (RKB - 16.5')						

WELLBORE TARGET DETAILS

Name	TVD	+N/-S	+E/-W	Shape
460' Setback BHL	1.0	4585.4	-820.1	Polygon
460' Setback SHL	1.0	189.7	-820.1	Polygon
Sectionline	1.0	-270.3	-820.1	Polygon
SHL 270'FSL & 1443'FEL	1.0	0.1	0.0	Point
BHL 460'FNL & 660'FEL	7298.5	4580.3	803.8	Point



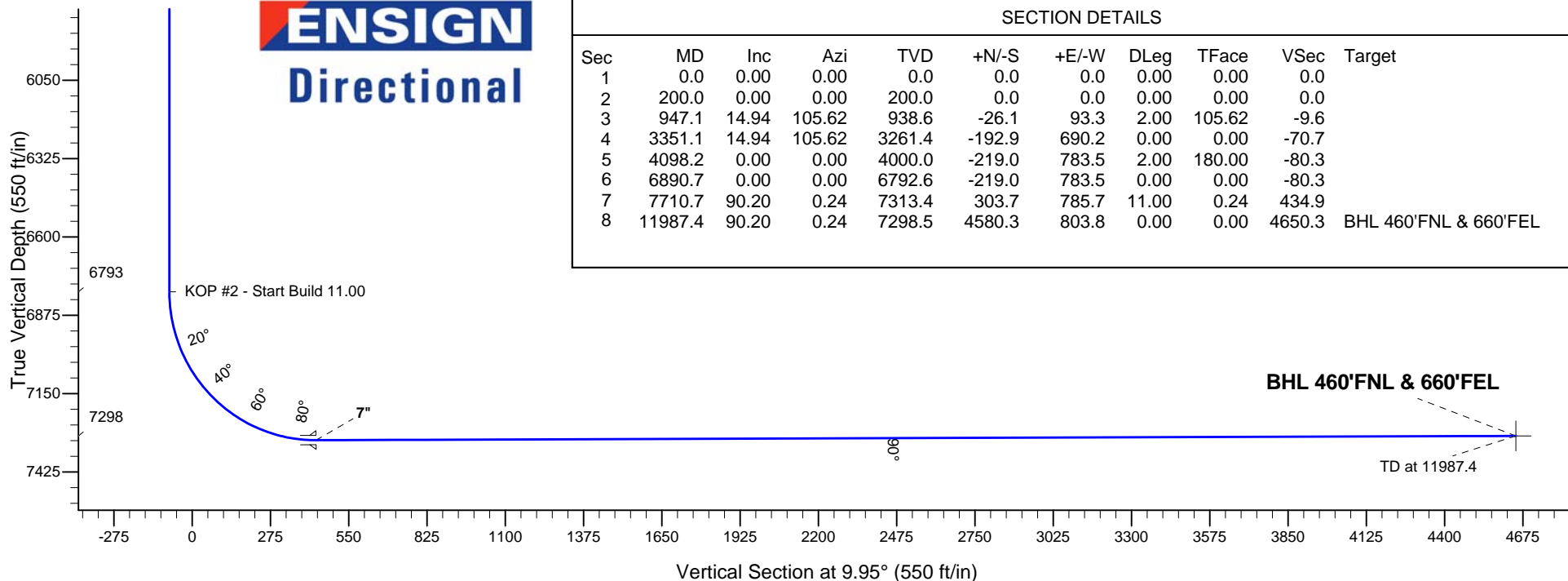
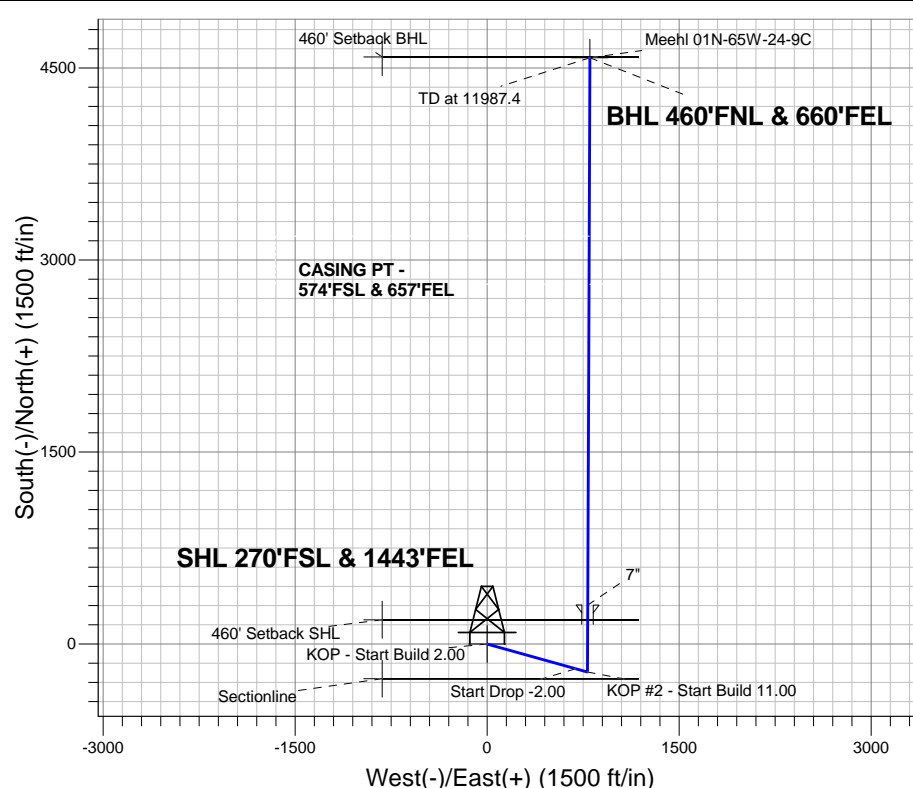
Azimuths to True North
Magnetic North: 8.30°

Magnetic Field
Strength: 52600.0nT
Dip Angle: 66.66°
Date: 10/17/2014
Model: IGRF2010

Meehl 01N-65W-24 Pad Sec.24-T01N-R65W
Meehl 01N-65W-24-9C
Plan #1 (10-17-14)

ANNOTATIONS

TVD	MD	Annotation
200.0	200.0	KOP - Start Build 2.00
3261.4	3351.1	Start Drop -2.00
6792.6	6890.7	KOP #2 - Start Build 11.00
7298.5	11987.4	TD at 11987.4



SECTION DETAILS

Sec	MD	Inc	Azi	TVD	+N/-S	+E/-W	DLeg	TFace	VSec	Target
1	0.0	0.00	0.00	0.0	0.0	0.0	0.00	0.00	0.0	
2	200.0	0.00	0.00	200.0	0.0	0.0	0.00	0.00	0.0	
3	947.1	14.94	105.62	938.6	-26.1	93.3	2.00	105.62	-9.6	
4	3351.1	14.94	105.62	3261.4	-192.9	690.2	0.00	0.00	-70.7	
5	4098.2	0.00	0.00	4000.0	-219.0	783.5	2.00	180.00	-80.3	
6	6890.7	0.00	0.00	6792.6	-219.0	783.5	0.00	0.00	-80.3	
7	7710.7	90.20	0.24	7313.4	303.7	785.7	11.00	0.24	434.9	
8	11987.4	90.20	0.24	7298.5	4580.3	803.8	0.00	0.00	4650.3	BHL 460'FNL & 660'FEL



Verdad Oil & Gas Corporation

SEC.24-T1N-R65W

Meehl 01N-65W-24 Pad Sec.24-T01N-R65W

Meehl 01N-65W-24-9C

Wellbore #1

Plan: Plan #1 (10-17-14)

Standard Planning Report

20 October, 2014

Database:	landmark	Local Co-ordinate Reference:	Well Meehl 01N-65W-24-9C
Company:	Verdad Oil & Gas Corporation	TVD Reference:	WELL @ 5038.5ft (RKB - 16.5')
Project:	SEC.24-T1N-R65W	MD Reference:	WELL @ 5038.5ft (RKB - 16.5')
Site:	Meehl 01N-65W-24 Pad Sec.24-T01N-R65W	North Reference:	True
Well:	Meehl 01N-65W-24-9C	Survey Calculation Method:	Minimum Curvature
Wellbore:	Wellbore #1		
Design:	Plan #1 (10-17-14)		

Project	SEC.24-T1N-R65W		
Map System:	US State Plane 1983	System Datum:	Mean Sea Level
Geo Datum:	North American Datum 1983		Using Well Reference Point
Map Zone:	Colorado Northern Zone		Using geodetic scale factor

Site		Meehl 01N-65W-24 Pad Sec.24-T01N-R65W			
Site Position:		Northing:	1,255,136.20ft	Latitude:	40.030291°
From:	Lat/Long	Easting:	3,249,664.19ft	Longitude:	-104.608420°
Position Uncertainty:	0.0 ft	Slot Radius:	"	Grid Convergence:	0.58 °

Well	Meehl 01N-65W-24-9C					
Well Position	+N/-S	0.3 ft	Northing:	1,255,137.71 ft	Latitude:	40.030292
	+E/-W	120.1 ft	Easting:	3,249,784.31 ft	Longitude:	-104.607991
Position Uncertainty		0.0 ft	Wellhead Elevation:	ft	Ground Level:	5,022.0 ft

Wellbore #1					
Magnetics	Model Name	Sample Date	Declination (°)	Dip Angle (°)	Field Strength (nT)
	IGRF2010	10/17/2014	8.30	66.66	52,600

Design	Plan #1 (10-17-14)			
Audit Notes:				
Version:	Phase:	PROTOTYPE	Tie On Depth:	0.0
Vertical Section:	Depth From (TVD) (ft)	+N/-S (ft)	+E/-W (ft)	Direction (°)
	0.0	0.0	0.0	9.95

Plan Sections										
Measured Depth (ft)	Inclination (°)	Azimuth (°)	Vertical Depth (ft)	+N/-S (ft)	+E/-W (ft)	Dogleg Rate (°/100ft)	Build Rate (°/100ft)	Turn Rate (°/100ft)	TFO (°)	Target
0.0	0.00	0.00	0.0	0.0	0.0	0.00	0.00	0.00	0.00	
200.0	0.00	0.00	200.0	0.0	0.0	0.00	0.00	0.00	0.00	
947.1	14.94	105.62	938.6	-26.1	93.3	2.00	2.00	0.00	105.62	
3,351.1	14.94	105.62	3,261.4	-192.9	690.2	0.00	0.00	0.00	0.00	
4,098.2	0.00	0.00	4,000.0	-219.0	783.5	2.00	-2.00	0.00	180.00	
6,890.7	0.00	0.00	6,792.6	-219.0	783.5	0.00	0.00	0.00	0.00	
7,710.7	90.20	0.24	7,313.4	303.7	785.7	11.00	11.00	0.00	0.24	
11,987.4	90.20	0.24	7,298.5	4,580.3	803.8	0.00	0.00	0.00	0.00	BHL 460'FNL & 660'FNL

Database: landmark
Company: Verdad Oil & Gas Corporation
Project: SEC.24-T1N-R65W
Site: Meehl 01N-65W-24 Pad Sec.24-T01N-R65W
Well: Meehl 01N-65W-24-9C
Wellbore: Wellbore #1
Design: Plan #1 (10-17-14)

Local Co-ordinate Reference: Well Meehl 01N-65W-24-9C
TVD Reference: WELL @ 5038.5ft (RKB - 16.5')
MD Reference: WELL @ 5038.5ft (RKB - 16.5')
North Reference: True
Survey Calculation Method: Minimum Curvature

Planned Survey

Measured Depth (ft)	Inclination (°)	Azimuth (°)	Vertical Depth (ft)	+N/-S (ft)	+E/-W (ft)	Vertical Section (ft)	Dogleg Rate (°/100ft)	Build Rate (°/100ft)	Turn Rate (°/100ft)
0.0	0.00	0.00	0.0	0.0	0.0	0.0	0.00	0.00	0.00
100.0	0.00	0.00	100.0	0.0	0.0	0.0	0.00	0.00	0.00
200.0	0.00	0.00	200.0	0.0	0.0	0.0	0.00	0.00	0.00
KOP - Start Build 2.00									
300.0	2.00	105.62	300.0	-0.5	1.7	-0.2	2.00	2.00	0.00
400.0	4.00	105.62	399.8	-1.9	6.7	-0.7	2.00	2.00	0.00
500.0	6.00	105.62	499.5	-4.2	15.1	-1.5	2.00	2.00	0.00
600.0	8.00	105.62	598.7	-7.5	26.9	-2.8	2.00	2.00	0.00
700.0	10.00	105.62	697.5	-11.7	41.9	-4.3	2.00	2.00	0.00
800.0	12.00	105.62	795.6	-16.9	60.3	-6.2	2.00	2.00	0.00
900.0	14.00	105.62	893.1	-22.9	82.0	-8.4	2.00	2.00	0.00
947.1	14.94	105.62	938.6	-26.1	93.3	-9.6	2.00	2.00	0.00
1,000.0	14.94	105.62	989.8	-29.7	106.4	-10.9	0.00	0.00	0.00
1,100.0	14.94	105.62	1,086.4	-36.7	131.3	-13.4	0.00	0.00	0.00
1,200.0	14.94	105.62	1,183.0	-43.6	156.1	-16.0	0.00	0.00	0.00
1,300.0	14.94	105.62	1,279.6	-50.6	180.9	-18.5	0.00	0.00	0.00
1,400.0	14.94	105.62	1,376.2	-57.5	205.7	-21.1	0.00	0.00	0.00
1,500.0	14.94	105.62	1,472.9	-64.5	230.6	-23.6	0.00	0.00	0.00
1,600.0	14.94	105.62	1,569.5	-71.4	255.4	-26.2	0.00	0.00	0.00
1,700.0	14.94	105.62	1,666.1	-78.3	280.2	-28.7	0.00	0.00	0.00
1,800.0	14.94	105.62	1,762.7	-85.3	305.1	-31.3	0.00	0.00	0.00
1,900.0	14.94	105.62	1,859.3	-92.2	329.9	-33.8	0.00	0.00	0.00
2,000.0	14.94	105.62	1,956.0	-99.2	354.7	-36.3	0.00	0.00	0.00
2,100.0	14.94	105.62	2,052.6	-106.1	379.6	-38.9	0.00	0.00	0.00
2,200.0	14.94	105.62	2,149.2	-113.0	404.4	-41.4	0.00	0.00	0.00
2,300.0	14.94	105.62	2,245.8	-120.0	429.2	-44.0	0.00	0.00	0.00
2,400.0	14.94	105.62	2,342.4	-126.9	454.1	-46.5	0.00	0.00	0.00
2,500.0	14.94	105.62	2,439.1	-133.9	478.9	-49.1	0.00	0.00	0.00
2,600.0	14.94	105.62	2,535.7	-140.8	503.7	-51.6	0.00	0.00	0.00
2,700.0	14.94	105.62	2,632.3	-147.7	528.5	-54.1	0.00	0.00	0.00
2,800.0	14.94	105.62	2,728.9	-154.7	553.4	-56.7	0.00	0.00	0.00
2,900.0	14.94	105.62	2,825.5	-161.6	578.2	-59.2	0.00	0.00	0.00
3,000.0	14.94	105.62	2,922.2	-168.6	603.0	-61.8	0.00	0.00	0.00
3,100.0	14.94	105.62	3,018.8	-175.5	627.9	-64.3	0.00	0.00	0.00
3,200.0	14.94	105.62	3,115.4	-182.4	652.7	-66.9	0.00	0.00	0.00
3,300.0	14.94	105.62	3,212.0	-189.4	677.5	-69.4	0.00	0.00	0.00
3,351.1	14.94	105.62	3,261.4	-192.9	690.2	-70.7	0.00	0.00	0.00
Start Drop -2.00									
3,400.0	13.96	105.62	3,308.7	-196.2	702.0	-71.9	2.00	-2.00	0.00
3,500.0	11.96	105.62	3,406.2	-202.3	723.6	-74.1	2.00	-2.00	0.00
3,600.0	9.96	105.62	3,504.4	-207.4	741.9	-76.0	2.00	-2.00	0.00
3,700.0	7.96	105.62	3,603.1	-211.6	756.9	-77.5	2.00	-2.00	0.00
3,800.0	5.96	105.62	3,702.4	-214.8	768.6	-78.7	2.00	-2.00	0.00
3,900.0	3.96	105.62	3,802.0	-217.2	776.9	-79.6	2.00	-2.00	0.00
4,000.0	1.96	105.62	3,901.9	-218.5	781.9	-80.1	2.00	-2.00	0.00
4,098.2	0.00	0.00	4,000.0	-219.0	783.5	-80.3	2.00	-2.00	0.00
4,100.0	0.00	0.00	4,001.8	-219.0	783.5	-80.3	0.00	0.00	0.00
4,200.0	0.00	0.00	4,101.8	-219.0	783.5	-80.3	0.00	0.00	0.00
4,300.0	0.00	0.00	4,201.8	-219.0	783.5	-80.3	0.00	0.00	0.00
4,400.0	0.00	0.00	4,301.8	-219.0	783.5	-80.3	0.00	0.00	0.00
4,500.0	0.00	0.00	4,401.8	-219.0	783.5	-80.3	0.00	0.00	0.00
4,600.0	0.00	0.00	4,501.8	-219.0	783.5	-80.3	0.00	0.00	0.00
4,700.0	0.00	0.00	4,601.8	-219.0	783.5	-80.3	0.00	0.00	0.00
4,800.0	0.00	0.00	4,701.8	-219.0	783.5	-80.3	0.00	0.00	0.00

Database: landmark
Company: Verdad Oil & Gas Corporation
Project: SEC.24-T1N-R65W
Site: Meehl 01N-65W-24 Pad Sec.24-T01N-R65W
Well: Meehl 01N-65W-24-9C
Wellbore: Wellbore #1
Design: Plan #1 (10-17-14)

Local Co-ordinate Reference: Well Meehl 01N-65W-24-9C
TVD Reference: WELL @ 5038.5ft (RKB - 16.5')
MD Reference: WELL @ 5038.5ft (RKB - 16.5')
North Reference: True
Survey Calculation Method: Minimum Curvature

Planned Survey									
Measured Depth (ft)	Inclination (°)	Azimuth (°)	Vertical Depth (ft)	+N/-S (ft)	+E/-W (ft)	Vertical Section (ft)	Dogleg Rate (°/100ft)	Build Rate (°/100ft)	Turn Rate (°/100ft)
4,900.0	0.00	0.00	4,801.8	-219.0	783.5	-80.3	0.00	0.00	0.00
5,000.0	0.00	0.00	4,901.8	-219.0	783.5	-80.3	0.00	0.00	0.00
5,100.0	0.00	0.00	5,001.8	-219.0	783.5	-80.3	0.00	0.00	0.00
5,200.0	0.00	0.00	5,101.8	-219.0	783.5	-80.3	0.00	0.00	0.00
5,300.0	0.00	0.00	5,201.8	-219.0	783.5	-80.3	0.00	0.00	0.00
5,400.0	0.00	0.00	5,301.8	-219.0	783.5	-80.3	0.00	0.00	0.00
5,500.0	0.00	0.00	5,401.8	-219.0	783.5	-80.3	0.00	0.00	0.00
5,600.0	0.00	0.00	5,501.8	-219.0	783.5	-80.3	0.00	0.00	0.00
5,700.0	0.00	0.00	5,601.8	-219.0	783.5	-80.3	0.00	0.00	0.00
5,800.0	0.00	0.00	5,701.8	-219.0	783.5	-80.3	0.00	0.00	0.00
5,900.0	0.00	0.00	5,801.8	-219.0	783.5	-80.3	0.00	0.00	0.00
6,000.0	0.00	0.00	5,901.8	-219.0	783.5	-80.3	0.00	0.00	0.00
6,100.0	0.00	0.00	6,001.8	-219.0	783.5	-80.3	0.00	0.00	0.00
6,200.0	0.00	0.00	6,101.8	-219.0	783.5	-80.3	0.00	0.00	0.00
6,300.0	0.00	0.00	6,201.8	-219.0	783.5	-80.3	0.00	0.00	0.00
6,400.0	0.00	0.00	6,301.8	-219.0	783.5	-80.3	0.00	0.00	0.00
6,500.0	0.00	0.00	6,401.8	-219.0	783.5	-80.3	0.00	0.00	0.00
6,600.0	0.00	0.00	6,501.8	-219.0	783.5	-80.3	0.00	0.00	0.00
6,700.0	0.00	0.00	6,601.8	-219.0	783.5	-80.3	0.00	0.00	0.00
6,800.0	0.00	0.00	6,701.8	-219.0	783.5	-80.3	0.00	0.00	0.00
6,890.7	0.00	0.00	6,792.5	-219.0	783.5	-80.3	0.00	0.00	0.00
KOP #2 - Start Build 11.00									
6,900.0	1.02	0.24	6,801.8	-218.9	783.5	-80.2	10.98	10.98	0.00
7,000.0	12.02	0.24	6,901.0	-207.6	783.5	-69.0	11.00	11.00	0.00
7,100.0	23.02	0.24	6,996.3	-177.5	783.7	-39.4	11.00	11.00	0.00
7,200.0	34.02	0.24	7,084.0	-129.8	783.9	7.6	11.00	11.00	0.00
7,300.0	45.02	0.24	7,161.0	-66.3	784.1	70.2	11.00	11.00	0.00
7,400.0	56.02	0.24	7,224.5	10.8	784.5	146.2	11.00	11.00	0.00
7,500.0	67.02	0.24	7,272.1	98.5	784.8	232.7	11.00	11.00	0.00
7,600.0	78.02	0.24	7,302.1	193.8	785.2	326.6	11.00	11.00	0.00
7,700.0	89.02	0.24	7,313.4	293.0	785.7	424.4	11.00	11.00	0.00
7,710.7	90.20	0.24	7,313.4	303.7	785.7	434.9	11.00	11.00	0.00
7"									
7,800.0	90.20	0.24	7,313.1	393.0	786.1	522.9	0.00	0.00	0.00
7,900.0	90.20	0.24	7,312.8	493.0	786.5	621.5	0.00	0.00	0.00
8,000.0	90.20	0.24	7,312.4	593.0	786.9	720.1	0.00	0.00	0.00
8,100.0	90.20	0.24	7,312.1	693.0	787.4	818.6	0.00	0.00	0.00
8,200.0	90.20	0.24	7,311.7	793.0	787.8	917.2	0.00	0.00	0.00
8,300.0	90.20	0.24	7,311.4	893.0	788.2	1,015.8	0.00	0.00	0.00
8,400.0	90.20	0.24	7,311.0	993.0	788.6	1,114.3	0.00	0.00	0.00
8,500.0	90.20	0.24	7,310.7	1,093.0	789.1	1,212.9	0.00	0.00	0.00
8,600.0	90.20	0.24	7,310.3	1,193.0	789.5	1,311.5	0.00	0.00	0.00
8,700.0	90.20	0.24	7,310.0	1,293.0	789.9	1,410.0	0.00	0.00	0.00
8,800.0	90.20	0.24	7,309.6	1,393.0	790.3	1,508.6	0.00	0.00	0.00
8,900.0	90.20	0.24	7,309.3	1,493.0	790.8	1,607.2	0.00	0.00	0.00
9,000.0	90.20	0.24	7,308.9	1,593.0	791.2	1,705.7	0.00	0.00	0.00
9,100.0	90.20	0.24	7,308.6	1,692.9	791.6	1,804.3	0.00	0.00	0.00
9,200.0	90.20	0.24	7,308.2	1,792.9	792.0	1,902.9	0.00	0.00	0.00
9,300.0	90.20	0.24	7,307.9	1,892.9	792.5	2,001.4	0.00	0.00	0.00
9,400.0	90.20	0.24	7,307.5	1,992.9	792.9	2,100.0	0.00	0.00	0.00
9,500.0	90.20	0.24	7,307.2	2,092.9	793.3	2,198.6	0.00	0.00	0.00
9,600.0	90.20	0.24	7,306.8	2,192.9	793.7	2,297.1	0.00	0.00	0.00
9,700.0	90.20	0.24	7,306.5	2,292.9	794.1	2,395.7	0.00	0.00	0.00
9,800.0	90.20	0.24	7,306.1	2,392.9	794.6	2,494.3	0.00	0.00	0.00

Database:	landmark	Local Co-ordinate Reference:	Well Meehl 01N-65W-24-9C
Company:	Verdad Oil & Gas Corporation	TVD Reference:	WELL @ 5038.5ft (RKB - 16.5')
Project:	SEC.24-T1N-R65W	MD Reference:	WELL @ 5038.5ft (RKB - 16.5')
Site:	Meehl 01N-65W-24 Pad Sec.24-T01N-R65W	North Reference:	True
Well:	Meehl 01N-65W-24-9C	Survey Calculation Method:	Minimum Curvature
Wellbore:	Wellbore #1		
Design:	Plan #1 (10-17-14)		

Planned Survey										
Measured Depth (ft)	Inclination (°)	Azimuth (°)	Vertical Depth (ft)	+N/-S (ft)	+E/-W (ft)	Vertical Section (ft)	Dogleg Rate (°/100ft)	Build Rate (°/100ft)	Turn Rate (°/100ft)	
9,900.0	90.20	0.24	7,305.8	2,492.9	795.0	2,592.8	0.00	0.00	0.00	
10,000.0	90.20	0.24	7,305.4	2,592.9	795.4	2,691.4	0.00	0.00	0.00	
10,100.0	90.20	0.24	7,305.1	2,692.9	795.8	2,790.0	0.00	0.00	0.00	
10,200.0	90.20	0.24	7,304.7	2,792.9	796.3	2,888.5	0.00	0.00	0.00	
10,300.0	90.20	0.24	7,304.4	2,892.9	796.7	2,987.1	0.00	0.00	0.00	
10,400.0	90.20	0.24	7,304.0	2,992.9	797.1	3,085.7	0.00	0.00	0.00	
10,500.0	90.20	0.24	7,303.7	3,092.9	797.5	3,184.2	0.00	0.00	0.00	
10,600.0	90.20	0.24	7,303.3	3,192.9	798.0	3,282.8	0.00	0.00	0.00	
10,700.0	90.20	0.24	7,303.0	3,292.9	798.4	3,381.4	0.00	0.00	0.00	
10,800.0	90.20	0.24	7,302.6	3,392.9	798.8	3,479.9	0.00	0.00	0.00	
10,900.0	90.20	0.24	7,302.3	3,492.9	799.2	3,578.5	0.00	0.00	0.00	
11,000.0	90.20	0.24	7,301.9	3,592.9	799.7	3,677.1	0.00	0.00	0.00	
11,100.0	90.20	0.24	7,301.6	3,692.9	800.1	3,775.6	0.00	0.00	0.00	
11,200.0	90.20	0.24	7,301.2	3,792.9	800.5	3,874.2	0.00	0.00	0.00	
11,300.0	90.20	0.24	7,300.9	3,892.9	800.9	3,972.8	0.00	0.00	0.00	
11,400.0	90.20	0.24	7,300.6	3,992.9	801.4	4,071.3	0.00	0.00	0.00	
11,500.0	90.20	0.24	7,300.2	4,092.9	801.8	4,169.9	0.00	0.00	0.00	
11,600.0	90.20	0.24	7,299.9	4,192.9	802.2	4,268.5	0.00	0.00	0.00	
11,700.0	90.20	0.24	7,299.5	4,292.9	802.6	4,367.0	0.00	0.00	0.00	
11,800.0	90.20	0.24	7,299.2	4,392.9	803.1	4,465.6	0.00	0.00	0.00	
11,900.0	90.20	0.24	7,298.8	4,492.9	803.5	4,564.2	0.00	0.00	0.00	
11,987.4	90.20	0.24	7,298.5	4,580.3	803.8	4,650.3	0.00	0.00	0.00	

Targets										
Target Name	Dip Angle (°)	Dip Dir. (°)	TVD (ft)	+N/-S (ft)	+E/-W (ft)	Northing (ft)	Easting (ft)	Latitude	Longitude	
Sectionline	0.00	0.00	1.0	-270.3	-820.1	1,254,859.18	3,248,966.97	40.029550	-104.610920	
- hit/miss target										
- Shape										
- plan misses by 863.5ft at 1.0ft MD (1.0 TVD, 0.0 N, 0.0 E)										
- Polygon										
Point 1			1.0	0.0	0.0	1,254,859.18	3,248,966.97			
Point 2			1.0	0.0	2,000.0	1,254,879.30	3,250,966.79			
460' Setback BHL	0.00	0.00	1.0	4,585.4	-820.1	1,259,714.45	3,248,918.15	40.042879	-104.610920	
- plan misses by 4658.2ft at 1.0ft MD (1.0 TVD, 0.0 N, 0.0 E)										
- Polygon										
Point 1			1.0	0.0	0.0	1,259,714.45	3,248,918.15			
Point 2			1.0	0.0	2,000.0	1,259,734.57	3,250,917.97			
460' Setback SHL	0.00	0.00	1.0	189.7	-820.1	1,255,319.14	3,248,962.34	40.030813	-104.610920	
- plan misses by 841.8ft at 1.0ft MD (1.0 TVD, 0.0 N, 0.0 E)										
- Polygon										
Point 1			1.0	0.0	0.0	1,255,319.14	3,248,962.34			
Point 2			1.0	0.0	2,000.0	1,255,339.26	3,250,962.16			
SHL 270'FSL & 1443'I	0.00	0.00	1.0	0.1	0.0	1,255,137.77	3,249,784.31	40.030292	-104.607991	
- plan misses by 0.1ft at 1.0ft MD (1.0 TVD, 0.0 N, 0.0 E)										
- Point										
BHL 460'FNL & 660'F	0.00	0.00	7,298.5	4,580.3	803.8	1,259,725.67	3,250,542.01	40.042865	-104.605120	
- plan hits target										
- Point										

Database:	landmark	Local Co-ordinate Reference:	Well Meehl 01N-65W-24-9C
Company:	Verdad Oil & Gas Corporation	TVD Reference:	WELL @ 5038.5ft (RKB - 16.5')
Project:	SEC.24-T1N-R65W	MD Reference:	WELL @ 5038.5ft (RKB - 16.5')
Site:	Meehl 01N-65W-24 Pad Sec.24-T01N-R65W	North Reference:	True
Well:	Meehl 01N-65W-24-9C	Survey Calculation Method:	Minimum Curvature
Wellbore:	Wellbore #1		
Design:	Plan #1 (10-17-14)		

Casing Points					
Measured Depth (ft)	Vertical Depth (ft)	Name	Casing Diameter (")	Hole Diameter (")	
7,710.7	7,313.4	7"	7	7-1/2	

Plan Annotations					
Measured Depth (ft)	Vertical Depth (ft)	Local Coordinates			
		+N/-S (ft)	+E/-W (ft)	Comment	
200.0	200.0	0.0	0.0	KOP - Start Build 2.00	
3,351.1	3,261.4	-26.1	93.3	Start Drop -2.00	
6,890.7	6,792.6	-192.9	690.2	KOP #2 - Start Build 11.00	
11,987.4	7,298.5	-219.0	783.5	TD at 11987.4	



Verdad Oil & Gas Corporation

SEC.24-T1N-R65W

Meehl 01N-65W-24 Pad Sec.24-T01N-R65W

Meehl 01N-65W-24-9C

Wellbore #1

Plan #1 (10-17-14)

Anticollision Report

20 October, 2014

Company:	Verdad Oil & Gas Corporation	Local Co-ordinate Reference:	Well Meehl 01N-65W-24-9C
Project:	SEC.24-T1N-R65W	TVD Reference:	WELL @ 5038.5ft (RKB - 16.5')
Reference Site:	Meehl 01N-65W-24 Pad Sec.24-T01N-R65W	MD Reference:	WELL @ 5038.5ft (RKB - 16.5')
Site Error:	0.0ft	North Reference:	True
Reference Well:	Meehl 01N-65W-24-9C	Survey Calculation Method:	Minimum Curvature
Well Error:	0.0ft	Output errors are at	2.00 sigma
Reference Wellbore	Wellbore #1	Database:	landmark
Reference Design:	Plan #1 (10-17-14)	Offset TVD Reference:	Offset Datum

Reference	Plan #1 (10-17-14)		
Filter type:	NO GLOBAL FILTER: Using user defined selection & filtering criteria		
Interpolation Method:	MD Interval 100.0ft	Error Model:	ISCWSA
Depth Range:	Unlimited	Scan Method:	Closest Approach 3D
Results Limited by:	Maximum center-center distance of 1,000.0ft	Error Surface:	Elliptical Conic
Warning Levels Evaluated at:	2.00 Sigma		

Survey Tool Program	Date 10/20/2014			
From (ft)	To (ft)	Survey (Wellbore)	Tool Name	Description
0.0	11,987.4	Plan #1 (10-17-14) (Wellbore #1)	MWD	MWD - Standard

Summary						
Site Name	Reference Measured Depth (ft)	Offset Measured Depth (ft)	Distance Between Centres (ft)	Distance Between Ellipses (ft)	Separation Factor	Warning
Offset Well - Wellbore - Design						
Meehl 01N-65W-24 Pad Sec.24-T01N-R65W						
Meehl 01N-65W-24-1C - Wellbore #1 - Plan #1 (10-17-14)	200.0	200.0	120.1	119.5	178.167	CC, ES
Meehl 01N-65W-24-1C - Wellbore #1 - Plan #1 (10-17-14)	900.0	867.6	257.7	253.7	64.892	SF
Meehl 01N-65W-24-2N - Wellbore #1 - Plan #1 (10-17-14)	200.0	200.0	105.0	104.3	155.740	CC, ES
Meehl 01N-65W-24-2N - Wellbore #1 - Plan #1 (10-17-14)	900.0	893.1	188.4	184.5	48.610	SF
Meehl 01N-65W-24-3N - Wellbore #1 - Plan #1 (10-17-14)	200.0	200.0	90.2	89.5	133.729	CC, ES
Meehl 01N-65W-24-3N - Wellbore #1 - Plan #1 (10-17-14)	7,000.0	6,893.0	992.3	961.7	32.422	SF
Meehl 01N-65W-24-4N - Wellbore #1 - Plan #1 (10-17-14)	200.0	200.0	75.1	74.4	111.302	CC, ES
Meehl 01N-65W-24-4N - Wellbore #1 - Plan #1 (10-17-14)	11,987.4	11,705.6	850.2	675.6	4.869	SF
Meehl 01N-65W-24-5C - Wellbore #1 - Plan #1 (10-17-14)	200.0	200.0	59.9	59.3	88.875	CC, ES
Meehl 01N-65W-24-5C - Wellbore #1 - Plan #1 (10-17-14)	11,987.4	11,910.2	659.9	480.3	3.673	SF
Meehl 01N-65W-24-6N - Wellbore #1 - Plan #1 (10-17-14)	200.0	200.0	45.1	44.4	66.864	CC, ES
Meehl 01N-65W-24-6N - Wellbore #1 - Plan #1 (10-17-14)	11,987.4	11,715.8	535.8	368.9	3.210	SF
Meehl 01N-65W-24-7N - Wellbore #1 - Plan #1 (10-17-14)	200.0	200.0	30.0	29.3	44.438	CC, ES
Meehl 01N-65W-24-7N - Wellbore #1 - Plan #1 (10-17-14)	11,987.4	11,734.4	388.6	233.4	2.504	SF
Meehl 01N-65W-24-8N - Wellbore #1 - Plan #1 (10-17-14)	200.0	200.0	15.1	14.4	22.427	CC, ES
Meehl 01N-65W-24-8N - Wellbore #1 - Plan #1 (10-17-14)	11,987.4	11,756.6	263.1	140.2	2.142	SF

Offset Design	Meehl 01N-65W-24 Pad Sec.24-T01N-R65W - Meehl 01N-65W-24-1C - Wellbore #1 - Plan #1 (10-17-1)												Offset Site Error:	0.0ft
Survey Program:	0-MWD												Offset Well Error:	0.0ft
Reference	Offset	Semi Major Axis	Distance											
Measured Depth (ft)	Vertical Depth (ft)	Measured Depth (ft)	Vertical Depth (ft)	Reference (ft)	Offset (ft)	Highside Toolface (°)	Offset Wellbore Centre +N/-S (ft)	+E/-W (ft)	Between Centres (ft)	Between Ellipses (ft)	Minimum Separation (ft)	Separation Factor	Warning	
0.0	0.0	0.0	0.0	0.0	0.0	-90.15	-0.3	-120.1	120.1					
100.0	100.0	100.0	100.0	0.1	0.1	-90.15	-0.3	-120.1	120.1	119.9	0.22	534.500		
200.0	200.0	200.0	200.0	0.3	0.3	-90.15	-0.3	-120.1	120.1	119.5	0.67	178.167	CC, ES	
300.0	300.0	296.3	296.3	0.5	0.5	164.08	-1.1	-121.6	123.3	122.2	1.10	112.296		
400.0	399.8	392.1	391.9	0.8	0.7	163.65	-3.3	-125.8	132.8	131.2	1.54	86.177		
500.0	499.5	486.7	486.2	1.0	1.0	163.06	-7.0	-132.8	148.5	146.5	2.01	73.931		
600.0	598.7	580.7	579.6	1.3	1.2	162.40	-12.1	-142.4	170.4	167.9	2.50	68.156		
700.0	697.5	677.3	675.4	1.6	1.5	162.01	-17.7	-153.1	196.3	193.3	2.98	65.812		
800.0	795.6	772.9	770.3	2.0	1.8	161.93	-23.3	-163.6	225.4	222.0	3.47	64.925		
900.0	893.1	867.6	864.2	2.5	2.1	162.06	-28.9	-174.1	257.7	253.7	3.97	64.892	SF	
1,000.0	989.8	961.2	957.1	3.0	2.4	162.41	-34.4	-184.4	292.7	288.2	4.48	65.355		
1,100.0	1,086.4	1,054.7	1,049.9	3.5	2.7	162.79	-39.8	-194.7	328.0	323.1	4.99	65.684		

CC - Min centre to center distance or convergent point, SF - min separation factor, ES - min ellipse separation

Company:	Verdad Oil & Gas Corporation	Local Co-ordinate Reference:	Well Meehl 01N-65W-24-9C
Project:	SEC.24-T1N-R65W	TVD Reference:	WELL @ 5038.5ft (RKB - 16.5')
Reference Site:	Meehl 01N-65W-24 Pad Sec.24-T01N-R65W	MD Reference:	WELL @ 5038.5ft (RKB - 16.5')
Site Error:	0.0ft	North Reference:	True
Reference Well:	Meehl 01N-65W-24-9C	Survey Calculation Method:	Minimum Curvature
Well Error:	0.0ft	Output errors are at	2.00 sigma
Reference Wellbore	Wellbore #1	Database:	landmark
Reference Design:	Plan #1 (10-17-14)	Offset TVD Reference:	Offset Datum

Offset Design Meehl 01N-65W-24 Pad Sec.24-T01N-R65W - Meehl 01N-65W-24-1C - Wellbore #1 - Plan #1 (10-17-1												Offset Site Error:	0.0 ft
Survey Program: 0-MWD												Offset Well Error:	0.0 ft
Reference		Offset		Semi Major Axis			Distance						
Measured Depth (ft)	Vertical Depth (ft)	Measured Depth (ft)	Vertical Depth (ft)	Reference (ft)	Offset (ft)	Highside Toolface (°)	Offset Wellbore Centre +N/-S (ft)	+E/-W (ft)	Between Centres (ft)	Between Ellipses (ft)	Minimum Separation (ft)	Separation Factor	Warning
1,200.0	1,183.0	1,148.3	1,142.7	4.0	3.0	163.10	-45.3	-205.1	363.4	357.9	5.52	65.871	
1,300.0	1,279.6	1,241.8	1,235.5	4.6	3.4	163.35	-50.8	-215.4	398.8	392.7	6.05	65.939	
1,400.0	1,376.2	1,335.3	1,328.3	5.1	3.7	163.56	-56.3	-225.7	434.1	427.6	6.58	65.987	
1,500.0	1,472.9	1,428.8	1,421.1	5.7	4.0	163.74	-61.7	-236.1	469.5	462.4	7.11	65.995	
1,600.0	1,569.5	1,522.4	1,513.9	6.2	4.3	163.89	-67.2	-246.4	504.9	497.2	7.65	65.980	
1,700.0	1,666.1	1,615.9	1,606.7	6.8	4.6	164.02	-72.7	-256.7	540.3	532.1	8.19	65.950	
1,800.0	1,762.7	1,709.4	1,699.5	7.3	4.9	164.14	-78.1	-267.0	575.7	566.9	8.73	65.912	
1,900.0	1,859.3	1,802.9	1,792.2	7.9	5.2	164.24	-83.6	-277.4	611.0	601.8	9.28	65.869	
2,000.0	1,956.0	1,896.5	1,885.0	8.4	5.5	164.34	-89.1	-287.7	646.4	636.6	9.82	65.824	
2,100.0	2,052.6	1,990.0	1,977.8	9.0	5.8	164.42	-94.6	-298.0	681.8	671.4	10.37	65.777	
2,200.0	2,149.2	2,083.5	2,070.6	9.5	6.1	164.49	-100.0	-308.4	717.2	706.3	10.91	65.729	
2,300.0	2,245.8	2,177.0	2,163.4	10.1	6.4	164.56	-105.5	-318.7	752.6	741.1	11.46	65.683	
2,400.0	2,342.4	2,270.6	2,256.2	10.6	6.7	164.62	-111.0	-329.0	788.0	776.0	12.01	65.637	
2,500.0	2,439.1	2,364.1	2,349.0	11.2	7.0	164.68	-116.4	-339.4	823.4	810.8	12.55	65.592	
2,600.0	2,535.7	2,457.6	2,441.8	11.8	7.4	164.73	-121.9	-349.7	858.8	845.7	13.10	65.549	
2,700.0	2,632.3	2,551.1	2,534.6	12.3	7.7	164.78	-127.4	-360.0	894.2	880.5	13.65	65.507	
2,800.0	2,728.9	2,644.7	2,627.4	12.9	8.0	164.82	-132.9	-370.3	929.5	915.3	14.20	65.466	
2,900.0	2,825.5	2,738.2	2,720.2	13.4	8.3	164.86	-138.3	-380.7	964.9	950.2	14.75	65.427	

Company:	Verdad Oil & Gas Corporation	Local Co-ordinate Reference:	Well Meehl 01N-65W-24-9C
Project:	SEC.24-T1N-R65W	TVD Reference:	WELL @ 5038.5ft (RKB - 16.5')
Reference Site:	Meehl 01N-65W-24 Pad Sec.24-T01N-R65W	MD Reference:	WELL @ 5038.5ft (RKB - 16.5')
Site Error:	0.0ft	North Reference:	True
Reference Well:	Meehl 01N-65W-24-9C	Survey Calculation Method:	Minimum Curvature
Well Error:	0.0ft	Output errors are at	2.00 sigma
Reference Wellbore	Wellbore #1	Database:	landmark
Reference Design:	Plan #1 (10-17-14)	Offset TVD Reference:	Offset Datum

Offset Design Meehl 01N-65W-24 Pad Sec.24-T01N-R65W - Meehl 01N-65W-24-2N - Wellbore #1 - Plan #1 (10-17-1												Offset Site Error:	0.0 ft
Survey Program: 0-MWD												Offset Well Error:	0.0 ft
Reference	Offset	Semi Major Axis		Distance									
Measured Depth (ft)	Vertical Depth (ft)	Measured Depth (ft)	Vertical Depth (ft)	Reference (ft)	Offset (ft)	Highside Toolface (°)	Offset Wellbore Centre +N/-S (ft)	+E/-W (ft)	Between Centres (ft)	Between Ellipses (ft)	Minimum Separation (ft)	Separation Factor	Warning
0.0	0.0	0.0	0.0	0.0	0.0	-89.97	0.0	-105.0	105.0				
100.0	100.0	100.0	100.0	0.1	0.1	-89.97	0.0	-105.0	105.0	104.8	0.22	467.219	
200.0	200.0	200.0	200.0	0.3	0.3	-89.97	0.0	-105.0	105.0	104.3	0.67	155.740 CC, ES	
300.0	300.0	300.0	300.0	0.5	0.6	164.65	0.0	-105.0	106.7	105.6	1.12	95.588	
400.0	399.8	399.8	399.8	0.8	0.8	165.34	0.0	-105.0	111.8	110.2	1.56	71.592	
500.0	499.5	499.5	499.5	1.0	1.0	166.35	0.0	-105.0	120.2	118.2	2.02	59.651	
600.0	598.7	598.7	598.7	1.3	1.2	167.54	0.0	-105.0	132.1	129.6	2.47	53.367	
700.0	697.5	697.5	697.5	1.6	1.5	168.79	0.0	-105.0	147.4	144.5	2.94	50.157	
800.0	795.6	795.6	795.6	2.0	1.7	170.01	0.0	-105.0	166.2	162.8	3.41	48.791	
900.0	893.1	893.1	893.1	2.5	1.9	171.12	0.0	-105.0	188.4	184.5	3.88	48.610 SF	
1,000.0	989.8	989.8	989.8	3.0	2.1	172.14	0.0	-105.0	213.5	209.2	4.35	49.110	
1,100.0	1,086.4	1,081.8	1,081.8	3.5	2.3	172.73	-0.7	-105.9	239.9	235.1	4.80	49.937	
1,200.0	1,183.0	1,172.4	1,172.3	4.0	2.5	172.72	-3.3	-109.0	268.4	263.1	5.26	51.038	
1,300.0	1,279.6	1,261.7	1,261.3	4.6	2.7	172.29	-7.6	-114.2	298.8	293.1	5.72	52.235	
1,400.0	1,376.2	1,349.7	1,348.8	5.1	2.8	171.57	-13.6	-121.4	331.2	325.0	6.20	53.453	
1,500.0	1,472.9	1,441.5	1,439.9	5.7	3.1	170.69	-21.2	-130.6	365.2	358.5	6.70	54.540	
1,600.0	1,569.5	1,535.4	1,532.9	6.2	3.3	169.93	-29.0	-140.0	399.4	392.2	7.20	55.435	
1,700.0	1,666.1	1,629.2	1,626.0	6.8	3.6	169.29	-36.8	-149.5	433.6	425.8	7.72	56.141	
1,800.0	1,762.7	1,723.1	1,719.1	7.3	3.8	168.74	-44.7	-158.9	467.8	459.5	8.25	56.704	
1,900.0	1,859.3	1,817.0	1,812.1	7.9	4.1	168.27	-52.5	-168.4	502.1	493.3	8.79	57.150	
2,000.0	1,956.0	1,910.9	1,905.2	8.4	4.4	167.86	-60.3	-177.8	536.4	527.0	9.33	57.513	
2,100.0	2,052.6	2,004.7	1,998.3	9.0	4.6	167.50	-68.2	-187.2	570.7	560.8	9.87	57.811	
2,200.0	2,149.2	2,098.6	2,091.3	9.5	4.9	167.17	-76.0	-196.7	605.0	594.6	10.42	58.055	
2,300.0	2,245.8	2,192.5	2,184.4	10.1	5.2	166.89	-83.8	-206.1	639.3	628.4	10.97	58.256	
2,400.0	2,342.4	2,286.3	2,277.4	10.6	5.5	166.63	-91.7	-215.6	673.7	662.2	11.53	58.423	
2,500.0	2,439.1	2,380.2	2,370.5	11.2	5.8	166.40	-99.5	-225.0	708.1	696.0	12.09	58.564	
2,600.0	2,535.7	2,474.1	2,463.6	11.8	6.1	166.18	-107.3	-234.5	742.5	729.8	12.65	58.682	
2,700.0	2,632.3	2,567.9	2,556.6	12.3	6.4	165.99	-115.2	-243.9	776.8	763.6	13.22	58.782	
2,800.0	2,728.9	2,661.8	2,649.7	12.9	6.7	165.81	-123.0	-253.4	811.2	797.5	13.78	58.866	
2,900.0	2,825.5	2,755.7	2,742.8	13.4	7.0	165.65	-130.8	-262.8	845.6	831.3	14.35	58.939	
3,000.0	2,922.2	2,849.6	2,835.8	14.0	7.3	165.50	-138.7	-272.2	880.0	865.1	14.92	59.000	
3,100.0	3,018.8	2,943.4	2,928.9	14.5	7.6	165.36	-146.5	-281.7	914.5	899.0	15.49	59.053	
3,200.0	3,115.4	3,037.3	3,022.0	15.1	7.9	165.24	-154.3	-291.1	948.9	932.8	16.06	59.098	
3,300.0	3,212.0	3,131.2	3,115.0	15.6	8.2	165.12	-162.2	-300.6	983.3	966.7	16.63	59.136	

Company:	Verdad Oil & Gas Corporation	Local Co-ordinate Reference:	Well Meehl 01N-65W-24-9C
Project:	SEC.24-T1N-R65W	TVD Reference:	WELL @ 5038.5ft (RKB - 16.5')
Reference Site:	Meehl 01N-65W-24 Pad Sec.24-T01N-R65W	MD Reference:	WELL @ 5038.5ft (RKB - 16.5')
Site Error:	0.0ft	North Reference:	True
Reference Well:	Meehl 01N-65W-24-9C	Survey Calculation Method:	Minimum Curvature
Well Error:	0.0ft	Output errors are at	2.00 sigma
Reference Wellbore	Wellbore #1	Database:	landmark
Reference Design:	Plan #1 (10-17-14)	Offset TVD Reference:	Offset Datum

Offset Design													Offset Site Error:	0.0 ft
Survey Program: 0-MWD													Offset Well Error:	0.0 ft
Reference		Offset		Semi Major Axis			Distance							Warning
Measured Depth (ft)	Vertical Depth (ft)	Measured Depth (ft)	Vertical Depth (ft)	Reference (ft)	Offset (ft)	Highside Toolface (°)	Offset Wellbore Centre +N/-S (ft)	+E/-W (ft)	Between Centres (ft)	Between Ellipses (ft)	Minimum Separation (ft)	Separation Factor		
0.0	0.0	0.0	0.0	0.0	0.0	-90.20	-0.3	-90.2	90.2					
100.0	100.0	100.0	100.0	0.1	0.1	-90.20	-0.3	-90.2	90.2	89.9	0.22	401.188		
200.0	200.0	200.0	200.0	0.3	0.3	-90.20	-0.3	-90.2	90.2	89.5	0.67	133.729 CC, ES		
300.0	300.0	300.0	300.0	0.5	0.6	164.47	-0.3	-90.2	91.9	90.7	1.12	82.291		
400.0	399.8	399.8	399.8	0.8	0.8	165.27	-0.3	-90.2	96.9	95.3	1.56	62.081		
500.0	499.5	499.5	499.5	1.0	1.0	166.44	-0.3	-90.2	105.4	103.3	2.02	52.285		
600.0	598.7	598.7	598.7	1.3	1.2	167.78	-0.3	-90.2	117.2	114.8	2.47	47.375		
700.0	697.5	697.5	697.5	1.6	1.5	169.16	-0.3	-90.2	132.6	129.6	2.94	45.122		
800.0	795.6	795.6	795.6	2.0	1.7	170.45	-0.3	-90.2	151.4	148.0	3.40	44.460		
900.0	893.1	893.1	893.1	2.5	1.9	171.62	-0.3	-90.2	173.6	169.7	3.87	44.820		
1,000.0	989.8	989.8	989.8	3.0	2.1	172.65	-0.3	-90.2	198.8	194.4	4.35	45.747		
1,100.0	1,086.4	1,086.4	1,086.4	3.5	2.3	173.49	-0.3	-90.2	224.4	219.6	4.82	46.525		
1,200.0	1,183.0	1,183.0	1,183.0	4.0	2.5	174.16	-0.3	-90.2	250.0	244.7	5.30	47.134		
1,300.0	1,279.6	1,279.6	1,279.6	4.6	2.8	174.71	-0.3	-90.2	275.7	269.9	5.79	47.621		
1,400.0	1,376.2	1,376.2	1,376.2	5.1	3.0	175.16	-0.3	-90.2	301.4	295.1	6.28	48.018		
1,500.0	1,472.9	1,472.9	1,472.9	5.7	3.2	175.54	-0.3	-90.2	327.1	320.3	6.77	48.347		
1,600.0	1,569.5	1,569.5	1,569.5	6.2	3.4	175.87	-0.3	-90.2	352.8	345.6	7.26	48.623		
1,700.0	1,666.1	1,663.8	1,663.8	6.8	3.6	176.03	-0.9	-90.5	378.7	371.0	7.73	49.011		
1,800.0	1,762.7	1,756.6	1,756.5	7.3	3.8	175.77	-4.1	-92.2	405.5	397.3	8.18	49.549		
1,900.0	1,859.3	1,848.7	1,848.4	7.9	3.9	175.15	-9.9	-95.2	433.2	424.5	8.64	50.119		
2,000.0	1,956.0	1,940.0	1,939.2	8.4	4.1	174.25	-18.1	-99.6	461.8	452.7	9.12	50.650		
2,100.0	2,052.6	2,035.0	2,033.5	9.0	4.3	173.22	-28.2	-104.9	491.1	481.4	9.62	51.054		
2,200.0	2,149.2	2,130.3	2,128.1	9.5	4.5	172.30	-38.4	-110.3	520.5	510.3	10.13	51.367		
2,300.0	2,245.8	2,225.5	2,222.7	10.1	4.7	171.48	-48.5	-115.6	550.0	539.3	10.66	51.600		
2,400.0	2,342.4	2,320.8	2,317.2	10.6	5.0	170.74	-58.7	-121.0	579.6	568.4	11.20	51.764		
2,500.0	2,439.1	2,416.1	2,411.8	11.2	5.2	170.08	-68.8	-126.3	609.3	597.6	11.74	51.886		
2,600.0	2,535.7	2,511.3	2,506.4	11.8	5.5	169.47	-78.9	-131.7	639.1	626.8	12.30	51.967		
2,700.0	2,632.3	2,606.6	2,600.9	12.3	5.7	168.92	-89.1	-137.0	668.9	656.0	12.86	52.017		
2,800.0	2,728.9	2,701.8	2,695.5	12.9	6.0	168.42	-99.2	-142.4	698.7	685.3	13.43	52.044		
2,900.0	2,825.5	2,797.1	2,790.1	13.4	6.2	167.96	-109.3	-147.7	728.7	714.7	14.00	52.052		
3,000.0	2,922.2	2,892.4	2,884.6	14.0	6.5	167.53	-119.5	-153.1	758.6	744.0	14.58	52.045		
3,100.0	3,018.8	2,987.6	2,979.2	14.5	6.8	167.14	-129.6	-158.4	788.6	773.5	15.16	52.027		
3,200.0	3,115.4	3,082.9	3,073.8	15.1	7.0	166.77	-139.8	-163.8	818.6	802.9	15.74	52.001		
3,300.0	3,212.0	3,178.1	3,168.3	15.6	7.3	166.43	-149.9	-169.1	848.7	832.4	16.33	51.968		
3,400.0	3,308.7	3,273.5	3,263.0	16.2	7.6	166.18	-160.1	-174.5	878.4	861.4	16.93	51.882		
3,500.0	3,406.2	3,369.7	3,358.5	16.5	7.9	165.96	-170.3	-179.9	905.3	887.8	17.50	51.740		
3,600.0	3,504.4	3,466.7	3,454.8	16.9	8.2	165.70	-180.6	-185.3	928.9	910.9	18.04	51.480		
3,700.0	3,603.1	3,564.3	3,551.7	17.2	8.5	165.38	-191.0	-190.8	949.3	930.7	18.57	51.118		
3,800.0	3,702.4	3,662.5	3,649.2	17.4	8.8	165.02	-201.5	-196.3	966.4	947.4	19.08	50.665		
3,900.0	3,802.0	3,778.7	3,764.7	17.6	9.0	164.61	-212.0	-201.9	979.5	959.9	19.55	50.100		
4,000.0	3,901.9	3,897.2	3,883.0	17.7	9.3	164.37	-218.4	-205.3	987.3	967.4	19.96	49.474		
4,100.0	4,001.8	4,016.0	4,001.8	17.8	9.5	-90.09	-220.5	-206.4	989.9	969.6	20.32	48.714		
4,200.0	4,101.8	4,116.0	4,101.8	18.0	9.7	-90.09	-220.5	-206.4	989.9	969.2	20.66	47.916		
4,300.0	4,201.8	4,216.0	4,201.8	18.1	9.9	-90.09	-220.5	-206.4	989.9	968.9	21.00	47.140		
4,400.0	4,301.8	4,316.0	4,301.8	18.2	10.1	-90.09	-220.5	-206.4	989.9	968.5	21.34	46.380		
4,500.0	4,401.8	4,416.0	4,401.8	18.3	10.3	-90.09	-220.5	-206.4	989.9	968.2	21.69	45.636		
4,600.0	4,501.8	4,516.0	4,501.8	18.4	10.4	-90.09	-220.5	-206.4	989.9	967.8	22.04	44.908		
4,700.0	4,601.8	4,616.0	4,601.8	18.5	10.6	-90.09	-220.5	-206.4	989.9	967.5	22.40	44.197		
4,800.0	4,701.8	4,716.0	4,701.8	18.6	10.8	-90.09	-220.5	-206.4	989.9	967.1	22.76	43.501		
4,900.0	4,801.8	4,816.0	4,801.8	18.7	11.0	-90.09	-220.5	-206.4	989.9	966.8	23.12	42.821		
5,000.0	4,901.8	4,916.0	4,901.8	18.8	11.2	-90.09	-220.5	-206.4	989.9	966.4	23.48	42.157		
5,100.0	5,001.8	5,016.0	5,001.8	19.0	11.4	-90.09	-220.5	-206.4	989.9	966.0	23.85	41.508		

CC - Min centre to center distance or convergent point, SF - min separation factor, ES - min ellipse separation

Company:	Verdad Oil & Gas Corporation	Local Co-ordinate Reference:	Well Meehl 01N-65W-24-9C
Project:	SEC.24-T1N-R65W	TVD Reference:	WELL @ 5038.5ft (RKB - 16.5')
Reference Site:	Meehl 01N-65W-24 Pad Sec.24-T01N-R65W	MD Reference:	WELL @ 5038.5ft (RKB - 16.5')
Site Error:	0.0ft	North Reference:	True
Reference Well:	Meehl 01N-65W-24-9C	Survey Calculation Method:	Minimum Curvature
Well Error:	0.0ft	Output errors are at	2.00 sigma
Reference Wellbore	Wellbore #1	Database:	landmark
Reference Design:	Plan #1 (10-17-14)	Offset TVD Reference:	Offset Datum

Offset Design Meehl 01N-65W-24 Pad Sec.24-T01N-R65W - Meehl 01N-65W-24-3N - Wellbore #1 - Plan #1 (10-17-1												Offset Site Error:	0.0 ft
Survey Program: 0-MWD												Offset Well Error:	0.0 ft
Reference		Offset		Semi Major Axis			Distance						
Measured Depth (ft)	Vertical Depth (ft)	Measured Depth (ft)	Vertical Depth (ft)	Reference (ft)	Offset (ft)	Highside Toolface (°)	Offset Wellbore Centre +N/-S (ft)	+E/-W (ft)	Between Centres (ft)	Between Ellipses (ft)	Minimum Separation (ft)	Separation Factor	Warning
5,200.0	5,101.8	5,116.0	5,101.8	19.1	11.6	-90.09	-220.5	-206.4	989.9	965.7	24.22	40.874	
5,300.0	5,201.8	5,216.0	5,201.8	19.2	11.8	-90.09	-220.5	-206.4	989.9	965.3	24.59	40.255	
5,400.0	5,301.8	5,316.0	5,301.8	19.3	12.0	-90.09	-220.5	-206.4	989.9	964.9	24.96	39.651	
5,500.0	5,401.8	5,416.0	5,401.8	19.5	12.2	-90.09	-220.5	-206.4	989.9	964.5	25.34	39.060	
5,600.0	5,501.8	5,516.0	5,501.8	19.6	12.4	-90.09	-220.5	-206.4	989.9	964.2	25.72	38.484	
5,700.0	5,601.8	5,616.0	5,601.8	19.7	12.6	-90.09	-220.5	-206.4	989.9	963.8	26.10	37.921	
5,800.0	5,701.8	5,716.0	5,701.8	19.8	12.8	-90.09	-220.5	-206.4	989.9	963.4	26.49	37.372	
5,900.0	5,801.8	5,816.0	5,801.8	20.0	13.0	-90.09	-220.5	-206.4	989.9	963.0	26.87	36.835	
6,000.0	5,901.8	5,916.0	5,901.8	20.1	13.2	-90.09	-220.5	-206.4	989.9	962.6	27.26	36.312	
6,100.0	6,001.8	6,016.0	6,001.8	20.3	13.4	-90.09	-220.5	-206.4	989.9	962.2	27.65	35.800	
6,200.0	6,101.8	6,116.0	6,101.8	20.4	13.6	-90.09	-220.5	-206.4	989.9	961.8	28.04	35.301	
6,300.0	6,201.8	6,216.0	6,201.8	20.5	13.8	-90.09	-220.5	-206.4	989.9	961.4	28.43	34.813	
6,400.0	6,301.8	6,316.0	6,301.8	20.7	14.0	-90.09	-220.5	-206.4	989.9	961.0	28.83	34.336	
6,500.0	6,401.8	6,416.0	6,401.8	20.8	14.2	-90.09	-220.5	-206.4	989.9	960.6	29.23	33.871	
6,600.0	6,501.8	6,516.0	6,501.8	21.0	14.4	-90.09	-220.5	-206.4	989.9	960.3	29.62	33.416	
6,700.0	6,601.8	6,616.1	6,601.9	21.1	14.6	-90.08	-220.4	-206.4	989.9	959.9	30.02	32.974	
6,767.6	6,669.4	6,683.9	6,669.4	21.2	14.7	-89.76	-214.8	-206.3	989.9	959.6	30.25	32.726	
6,800.0	6,701.8	6,715.6	6,700.7	21.3	14.8	-89.43	-209.2	-206.3	989.9	959.5	30.33	32.634	
6,900.0	6,801.8	6,807.8	6,788.7	21.4	14.9	-88.11	-182.3	-206.2	990.5	960.0	30.51	32.460	
7,000.0	6,901.0	6,893.0	6,864.7	21.5	14.9	-86.20	-143.9	-206.1	992.3	961.7	30.61	32.422 SF	
7,100.0	6,996.3	6,974.5	6,930.5	21.6	15.0	-84.42	-96.2	-205.9	995.0	964.4	30.65	32.462	
7,200.0	7,084.0	7,050.0	6,984.3	21.6	15.0	-82.85	-43.2	-205.6	998.3	967.6	30.71	32.509	

Company:	Verdad Oil & Gas Corporation	Local Co-ordinate Reference:	Well Meehl 01N-65W-24-9C
Project:	SEC.24-T1N-R65W	TVD Reference:	WELL @ 5038.5ft (RKB - 16.5')
Reference Site:	Meehl 01N-65W-24 Pad Sec.24-T01N-R65W	MD Reference:	WELL @ 5038.5ft (RKB - 16.5')
Site Error:	0.0ft	North Reference:	True
Reference Well:	Meehl 01N-65W-24-9C	Survey Calculation Method:	Minimum Curvature
Well Error:	0.0ft	Output errors are at	2.00 sigma
Reference Wellbore	Wellbore #1	Database:	landmark
Reference Design:	Plan #1 (10-17-14)	Offset TVD Reference:	Offset Datum

Offset Design													Offset Site Error:	0.0 ft
Survey Program: 0-MWD													Offset Well Error:	0.0 ft
Reference		Offset		Semi Major Axis			Distance							Warning
Measured Depth (ft)	Vertical Depth (ft)	Measured Depth (ft)	Vertical Depth (ft)	Reference (ft)	Offset (ft)	Highside Toolface (°)	Offset Wellbore Centre +N/-S (ft)	+E/-W (ft)	Between Centres (ft)	Between Ellipses (ft)	Minimum Separation (ft)	Separation Factor		
0.0	0.0	0.0	0.0	0.0	0.0	-89.96	0.1	-75.1	75.1					
100.0	100.0	100.0	100.0	0.1	0.1	-89.96	0.1	-75.1	75.1	74.8	0.22	333.906		
200.0	200.0	200.0	200.0	0.3	0.3	-89.96	0.1	-75.1	75.1	74.4	0.67	111.302 CC, ES		
300.0	300.0	300.0	300.0	0.5	0.6	164.76	0.1	-75.1	76.7	75.6	1.12	68.744		
400.0	399.8	399.8	399.8	0.8	0.8	165.70	0.1	-75.1	81.8	80.2	1.56	52.400		
500.0	499.5	499.5	499.5	1.0	1.0	167.03	0.1	-75.1	90.3	88.3	2.02	44.797		
600.0	598.7	598.7	598.7	1.3	1.2	168.52	0.1	-75.1	102.2	99.7	2.47	41.297		
700.0	697.5	697.5	697.5	1.6	1.5	169.98	0.1	-75.1	117.6	114.6	2.94	40.025		
800.0	795.6	795.6	795.6	2.0	1.7	171.32	0.1	-75.1	136.4	133.0	3.40	40.086		
900.0	893.1	893.1	893.1	2.5	1.9	172.48	0.1	-75.1	158.7	154.8	3.87	40.998		
1,000.0	989.8	989.8	989.8	3.0	2.1	173.49	0.1	-75.1	183.9	179.6	4.34	42.361		
1,100.0	1,086.4	1,086.4	1,086.4	3.5	2.3	174.29	0.1	-75.1	209.6	204.7	4.82	43.489		
1,200.0	1,183.0	1,183.0	1,183.0	4.0	2.5	174.91	0.1	-75.1	235.2	229.9	5.30	44.384		
1,300.0	1,279.6	1,279.6	1,279.6	4.6	2.8	175.42	0.1	-75.1	260.9	255.1	5.78	45.110		
1,400.0	1,376.2	1,376.2	1,376.2	5.1	3.0	175.83	0.1	-75.1	286.6	280.4	6.27	45.708		
1,500.0	1,472.9	1,472.9	1,472.9	5.7	3.2	176.17	0.1	-75.1	312.4	305.6	6.76	46.208		
1,600.0	1,569.5	1,569.5	1,569.5	6.2	3.4	176.46	0.1	-75.1	338.1	330.8	7.25	46.632		
1,700.0	1,666.1	1,666.1	1,666.1	6.8	3.6	176.71	0.1	-75.1	363.8	356.1	7.74	46.996		
1,800.0	1,762.7	1,762.7	1,762.7	7.3	3.8	176.93	0.1	-75.1	389.6	381.3	8.23	47.310		
1,900.0	1,859.3	1,862.7	1,862.7	7.9	4.1	177.04	-0.6	-74.9	415.1	406.4	8.72	47.615		
2,000.0	1,956.0	1,965.2	1,965.1	8.4	4.2	176.71	-4.7	-74.3	439.4	430.3	9.18	47.852		
2,100.0	2,052.6	2,068.1	2,067.7	9.0	4.4	175.98	-12.3	-73.2	462.6	452.9	9.65	47.912		
2,200.0	2,149.2	2,169.4	2,168.4	9.5	4.6	174.94	-23.3	-71.5	484.6	474.5	10.15	47.770		
2,300.0	2,245.8	2,266.6	2,264.9	10.1	4.8	173.93	-34.8	-69.7	506.5	495.9	10.65	47.554		
2,400.0	2,342.4	2,363.8	2,361.4	10.6	5.0	173.00	-46.2	-68.0	528.6	517.4	11.17	47.305		
2,500.0	2,439.1	2,461.0	2,458.0	11.2	5.2	172.15	-57.7	-66.2	550.8	539.0	11.71	47.033		
2,600.0	2,535.7	2,558.2	2,554.5	11.8	5.5	171.36	-69.1	-64.5	573.0	560.8	12.26	46.747		
2,700.0	2,632.3	2,655.4	2,651.0	12.3	5.7	170.63	-80.5	-62.8	595.4	582.6	12.82	46.450		
2,800.0	2,728.9	2,752.6	2,747.5	12.9	5.9	169.96	-92.0	-61.0	617.9	604.5	13.39	46.150		
2,900.0	2,825.5	2,849.8	2,844.0	13.4	6.2	169.33	-103.4	-59.3	640.4	626.4	13.97	45.851		
3,000.0	2,922.2	2,947.0	2,940.5	14.0	6.5	168.74	-114.8	-57.5	663.0	648.4	14.55	45.555		
3,100.0	3,018.8	3,044.2	3,037.0	14.5	6.7	168.19	-126.3	-55.8	685.7	670.5	15.15	45.265		
3,200.0	3,115.4	3,141.4	3,133.5	15.1	7.0	167.68	-137.7	-54.0	708.4	692.6	15.75	44.982		
3,300.0	3,212.0	3,238.6	3,230.0	15.6	7.3	167.20	-149.2	-52.3	731.1	714.8	16.35	44.707		
3,400.0	3,308.7	3,335.9	3,326.6	16.2	7.5	166.79	-160.6	-50.5	753.6	736.6	16.97	44.400		
3,500.0	3,406.2	3,433.7	3,423.7	16.5	7.8	166.40	-172.1	-48.8	773.1	755.6	17.56	44.036		
3,600.0	3,504.4	3,532.1	3,521.4	16.9	8.1	165.95	-183.7	-47.0	789.4	771.3	18.12	43.557		
3,700.0	3,603.1	3,631.0	3,619.6	17.2	8.4	165.45	-195.3	-45.2	802.5	783.8	18.67	42.974		
3,800.0	3,702.4	3,727.5	3,715.5	17.4	8.6	164.94	-206.1	-43.6	812.3	793.1	19.17	42.376		
3,900.0	3,802.0	3,822.8	3,810.4	17.6	8.9	164.58	-213.9	-42.4	819.4	799.8	19.58	41.836		
4,000.0	3,901.9	3,918.4	3,905.9	17.7	9.1	164.37	-218.6	-41.7	823.6	803.6	19.94	41.310		
4,100.0	4,001.8	4,014.3	4,001.8	17.8	9.3	-90.08	-220.1	-41.5	825.0	804.7	20.26	40.723		
4,200.0	4,101.8	4,114.3	4,101.8	18.0	9.4	-90.08	-220.1	-41.5	825.0	804.4	20.60	40.051		
4,300.0	4,201.8	4,214.3	4,201.8	18.1	9.6	-90.08	-220.1	-41.5	825.0	804.0	20.94	39.395		
4,400.0	4,301.8	4,314.3	4,301.8	18.2	9.8	-90.08	-220.1	-41.5	825.0	803.7	21.29	38.753		
4,500.0	4,401.8	4,414.3	4,401.8	18.3	10.0	-90.08	-220.1	-41.5	825.0	803.3	21.64	38.125		
4,600.0	4,501.8	4,514.3	4,501.8	18.4	10.2	-90.08	-220.1	-41.5	825.0	803.0	21.99	37.511		
4,700.0	4,601.8	4,614.3	4,601.8	18.5	10.4	-90.08	-220.1	-41.5	825.0	802.6	22.35	36.912		
4,800.0	4,701.8	4,714.3	4,701.8	18.6	10.6	-90.08	-220.1	-41.5	825.0	802.2	22.71	36.326		
4,900.0	4,801.8	4,814.3	4,801.8	18.7	10.8	-90.08	-220.1	-41.5	825.0	801.9	23.07	35.753		
5,000.0	4,901.8	4,914.3	4,901.8	18.8	11.0	-90.08	-220.1	-41.5	825.0	801.5	23.44	35.194		
5,100.0	5,001.8	5,014.3	5,001.8	19.0	11.2	-90.08	-220.1	-41.5	825.0	801.1	23.81	34.649		

CC - Min centre to center distance or convergent point, SF - min separation factor, ES - min ellipse separation

Company:	Verdad Oil & Gas Corporation	Local Co-ordinate Reference:	Well Meehl 01N-65W-24-9C
Project:	SEC.24-T1N-R65W	TVD Reference:	WELL @ 5038.5ft (RKB - 16.5')
Reference Site:	Meehl 01N-65W-24 Pad Sec.24-T01N-R65W	MD Reference:	WELL @ 5038.5ft (RKB - 16.5')
Site Error:	0.0ft	North Reference:	True
Reference Well:	Meehl 01N-65W-24-9C	Survey Calculation Method:	Minimum Curvature
Well Error:	0.0ft	Output errors are at	2.00 sigma
Reference Wellbore	Wellbore #1	Database:	landmark
Reference Design:	Plan #1 (10-17-14)	Offset TVD Reference:	Offset Datum

Offset Design												Offset Site Error:	0.0 ft
Survey Program: 0-MWD												Offset Well Error:	0.0 ft
Reference		Offset		Semi Major Axis			Distance						
Measured Depth (ft)	Vertical Depth (ft)	Measured Depth (ft)	Vertical Depth (ft)	Reference (ft)	Offset (ft)	Highside Toolface (°)	Offset Wellbore Centre +N/-S (ft)	+E/-W (ft)	Between Centres (ft)	Between Ellipses (ft)	Minimum Separation (ft)	Separation Factor	Warning
5,200.0	5,101.8	5,114.3	5,101.8	19.1	11.4	-90.08	-220.1	-41.5	825.0	800.8	24.18	34.116	
5,300.0	5,201.8	5,214.3	5,201.8	19.2	11.6	-90.08	-220.1	-41.5	825.0	800.4	24.56	33.596	
5,400.0	5,301.8	5,314.3	5,301.8	19.3	11.8	-90.08	-220.1	-41.5	825.0	800.0	24.93	33.088	
5,500.0	5,401.8	5,414.3	5,401.8	19.5	12.0	-90.08	-220.1	-41.5	825.0	799.6	25.31	32.592	
5,600.0	5,501.8	5,514.3	5,501.8	19.6	12.2	-90.08	-220.1	-41.5	825.0	799.3	25.69	32.109	
5,700.0	5,601.8	5,614.3	5,601.8	19.7	12.4	-90.08	-220.1	-41.5	825.0	798.9	26.08	31.637	
5,800.0	5,701.8	5,714.3	5,701.8	19.8	12.6	-90.08	-220.1	-41.5	825.0	798.5	26.46	31.176	
5,900.0	5,801.8	5,814.3	5,801.8	20.0	12.8	-90.08	-220.1	-41.5	825.0	798.1	26.85	30.726	
6,000.0	5,901.8	5,914.3	5,901.8	20.1	13.0	-90.08	-220.1	-41.5	825.0	797.7	27.24	30.287	
6,100.0	6,001.8	6,014.3	6,001.8	20.3	13.2	-90.08	-220.1	-41.5	825.0	797.3	27.63	29.858	
6,200.0	6,101.8	6,114.3	6,101.8	20.4	13.4	-90.08	-220.1	-41.5	825.0	796.9	28.02	29.440	
6,300.0	6,201.8	6,214.3	6,201.8	20.5	13.6	-90.08	-220.1	-41.5	825.0	796.5	28.42	29.031	
6,400.0	6,301.8	6,314.3	6,301.8	20.7	13.8	-90.08	-220.1	-41.5	825.0	796.1	28.81	28.632	
6,500.0	6,401.8	6,414.3	6,401.8	20.8	14.1	-90.08	-220.1	-41.5	825.0	795.7	29.21	28.242	
6,600.0	6,501.8	6,514.3	6,501.8	21.0	14.3	-90.08	-220.1	-41.5	825.0	795.3	29.61	27.862	
6,700.0	6,601.8	6,614.4	6,601.9	21.1	14.5	-90.07	-220.1	-41.5	825.0	794.9	30.01	27.492	
6,760.1	6,662.0	6,674.7	6,662.0	21.2	14.6	-89.76	-215.5	-41.4	824.9	794.7	30.21	27.310	
6,800.0	6,701.8	6,713.7	6,700.4	21.3	14.6	-89.30	-208.9	-41.4	825.0	794.7	30.31	27.222	
6,900.0	6,801.8	6,805.7	6,788.3	21.4	14.7	-87.67	-182.1	-41.3	825.7	795.3	30.45	27.116	
7,000.0	6,901.0	6,890.8	6,864.2	21.5	14.8	-85.38	-143.8	-41.1	828.0	797.4	30.51	27.137	
7,100.0	6,996.3	6,972.2	6,930.1	21.6	14.8	-83.26	-96.2	-40.9	831.2	800.7	30.53	27.224	
7,200.0	7,084.0	7,050.0	6,985.4	21.6	14.9	-81.36	-41.6	-40.7	835.1	804.6	30.57	27.317	
7,300.0	7,161.0	7,127.0	7,031.6	21.6	15.0	-79.69	20.0	-40.4	839.1	808.5	30.68	27.347	
7,400.0	7,224.5	7,200.0	7,066.5	21.6	15.3	-78.35	84.0	-40.2	842.8	811.9	30.91	27.272	
7,500.0	7,272.1	7,275.2	7,092.7	21.7	15.6	-77.32	154.5	-39.9	845.9	814.5	31.33	27.002	
7,600.0	7,302.1	7,350.0	7,108.5	21.8	16.0	-76.66	227.5	-39.6	847.9	815.9	31.97	26.520	
7,700.0	7,313.4	7,420.4	7,113.7	22.0	16.5	-76.39	297.6	-39.3	848.8	815.9	32.86	25.828	
7,800.0	7,313.1	7,518.3	7,113.2	22.4	17.3	-76.38	395.5	-38.9	848.8	814.5	34.38	24.687	
7,900.0	7,312.8	7,618.3	7,112.8	22.9	18.3	-76.37	495.5	-38.4	848.9	812.6	36.24	23.423	
8,000.0	7,312.4	7,718.3	7,112.3	23.6	19.5	-76.36	595.5	-38.0	848.9	810.5	38.37	22.122	
8,100.0	7,312.1	7,818.3	7,111.8	24.6	20.7	-76.36	695.5	-37.6	848.9	808.2	40.74	20.840	
8,200.0	7,311.7	7,918.3	7,111.4	25.6	22.1	-76.35	795.5	-37.2	849.0	805.7	43.29	19.610	
8,300.0	7,311.4	8,018.3	7,110.9	26.8	23.5	-76.34	895.5	-36.8	849.0	803.0	46.01	18.452	
8,400.0	7,311.0	8,118.3	7,110.4	28.1	25.0	-76.33	995.5	-36.3	849.0	800.2	48.86	17.376	
8,500.0	7,310.7	8,218.3	7,109.9	29.4	26.5	-76.32	1,095.5	-35.9	849.1	797.2	51.83	16.383	
8,600.0	7,310.3	8,318.3	7,109.5	30.8	28.1	-76.32	1,195.5	-35.5	849.1	794.2	54.88	15.471	
8,700.0	7,310.0	8,418.3	7,109.0	32.3	29.8	-76.31	1,295.5	-35.1	849.1	791.1	58.02	14.635	
8,800.0	7,309.6	8,518.3	7,108.5	33.8	31.4	-76.30	1,395.5	-34.7	849.2	787.9	61.22	13.870	
8,900.0	7,309.3	8,618.3	7,108.1	35.4	33.1	-76.29	1,495.5	-34.3	849.2	784.7	64.48	13.169	
9,000.0	7,308.9	8,718.3	7,107.6	37.0	34.8	-76.28	1,595.5	-33.8	849.2	781.4	67.79	12.527	
9,100.0	7,308.6	8,818.3	7,107.1	38.6	36.6	-76.28	1,695.5	-33.4	849.3	778.1	71.14	11.937	
9,200.0	7,308.2	8,918.3	7,106.6	40.3	38.3	-76.27	1,795.5	-33.0	849.3	774.8	74.53	11.395	
9,300.0	7,307.9	9,018.3	7,106.2	42.0	40.1	-76.26	1,895.5	-32.6	849.3	771.4	77.95	10.896	
9,400.0	7,307.5	9,118.3	7,105.7	43.6	41.9	-76.25	1,995.5	-32.2	849.4	768.0	81.40	10.435	
9,500.0	7,307.2	9,218.3	7,105.2	45.4	43.6	-76.25	2,095.5	-31.7	849.4	764.5	84.86	10.009	
9,600.0	7,306.8	9,318.3	7,104.8	47.1	45.4	-76.24	2,195.5	-31.3	849.4	761.1	88.36	9.614	
9,700.0	7,306.5	9,418.3	7,104.3	48.8	47.2	-76.23	2,295.5	-30.9	849.5	757.6	91.86	9.247	
9,800.0	7,306.1	9,518.3	7,103.8	50.6	49.1	-76.22	2,395.4	-30.5	849.5	754.1	95.39	8.905	
9,900.0	7,305.8	9,618.3	7,103.3	52.4	50.9	-76.21	2,495.4	-30.1	849.5	750.6	98.93	8.587	
10,000.0	7,305.4	9,718.3	7,102.9	54.1	52.7	-76.21	2,595.4	-29.6	849.6	747.1	102.49	8.290	
10,100.0	7,305.1	9,818.3	7,102.4	55.9	54.6	-76.20	2,695.4	-29.2	849.6	743.5	106.05	8.011	
10,200.0	7,304.7	9,918.3	7,101.9	57.7	56.4	-76.19	2,795.4	-28.8	849.6	740.0	109.63	7.750	

CC - Min centre to center distance or convergent point, SF - min separation factor, ES - min ellipse separation

Company:	Verdad Oil & Gas Corporation	Local Co-ordinate Reference:	Well Meehl 01N-65W-24-9C
Project:	SEC.24-T1N-R65W	TVD Reference:	WELL @ 5038.5ft (RKB - 16.5')
Reference Site:	Meehl 01N-65W-24 Pad Sec.24-T01N-R65W	MD Reference:	WELL @ 5038.5ft (RKB - 16.5')
Site Error:	0.0ft	North Reference:	True
Reference Well:	Meehl 01N-65W-24-9C	Survey Calculation Method:	Minimum Curvature
Well Error:	0.0ft	Output errors are at	2.00 sigma
Reference Wellbore	Wellbore #1	Database:	landmark
Reference Design:	Plan #1 (10-17-14)	Offset TVD Reference:	Offset Datum

Offset Design Meehl 01N-65W-24 Pad Sec.24-T01N-R65W - Meehl 01N-65W-24-4N - Wellbore #1 - Plan #1 (10-17-1												Offset Site Error:	0.0 ft
Survey Program: 0-MWD												Offset Well Error:	0.0 ft
Reference		Offset		Semi Major Axis			Distance						
Measured Depth (ft)	Vertical Depth (ft)	Measured Depth (ft)	Vertical Depth (ft)	Reference (ft)	Offset (ft)	Highside Toolface (°)	Offset Wellbore Centre +N/-S (ft)	+E/-W (ft)	Between Centres (ft)	Between Ellipses (ft)	Minimum Separation (ft)	Separation Factor	Warning
10,300.0	7,304.4	10,018.3	7,101.5	59.5	58.2	-76.18	2,895.4	-28.4	849.7	736.4	113.22	7.505	
10,400.0	7,304.0	10,118.3	7,101.0	61.3	60.1	-76.17	2,995.4	-28.0	849.7	732.9	116.81	7.274	
10,500.0	7,303.7	10,218.3	7,100.5	63.1	61.9	-76.17	3,095.4	-27.5	849.7	729.3	120.41	7.057	
10,600.0	7,303.3	10,318.3	7,100.0	64.9	63.8	-76.16	3,195.4	-27.1	849.8	725.7	124.02	6.852	
10,700.0	7,303.0	10,418.3	7,099.6	66.8	65.7	-76.15	3,295.4	-26.7	849.8	722.2	127.64	6.658	
10,800.0	7,302.6	10,518.3	7,099.1	68.6	67.5	-76.14	3,395.4	-26.3	849.8	718.6	131.26	6.474	
10,900.0	7,302.3	10,618.3	7,098.6	70.4	69.4	-76.13	3,495.4	-25.9	849.9	715.0	134.89	6.300	
11,000.0	7,301.9	10,718.3	7,098.2	72.3	71.3	-76.13	3,595.4	-25.4	849.9	711.4	138.53	6.135	
11,100.0	7,301.6	10,818.3	7,097.7	74.1	73.1	-76.12	3,695.4	-25.0	849.9	707.8	142.17	5.978	
11,200.0	7,301.2	10,918.3	7,097.2	76.0	75.0	-76.11	3,795.4	-24.6	850.0	704.2	145.81	5.829	
11,300.0	7,300.9	11,018.3	7,096.7	77.8	76.9	-76.10	3,895.4	-24.2	850.0	700.5	149.46	5.687	
11,400.0	7,300.6	11,118.3	7,096.3	79.7	78.8	-76.09	3,995.4	-23.8	850.0	696.9	153.11	5.552	
11,500.0	7,300.2	11,218.3	7,095.8	81.5	80.6	-76.09	4,095.4	-23.3	850.1	693.3	156.76	5.423	
11,600.0	7,299.9	11,318.3	7,095.3	83.4	82.5	-76.08	4,195.4	-22.9	850.1	689.7	160.42	5.299	
11,700.0	7,299.5	11,418.3	7,094.9	85.2	84.4	-76.07	4,295.4	-22.5	850.1	686.1	164.08	5.181	
11,800.0	7,299.2	11,518.3	7,094.4	87.1	86.3	-76.06	4,395.4	-22.1	850.2	682.4	167.74	5.068	
11,900.0	7,298.8	11,618.3	7,093.9	89.0	88.2	-76.05	4,495.4	-21.7	850.2	678.8	171.40	4.960	
11,987.4	7,298.5	11,705.6	7,093.5	90.6	89.8	-76.05	4,582.8	-21.3	850.2	675.6	174.61	4.869 SF	

Company:	Verdad Oil & Gas Corporation	Local Co-ordinate Reference:	Well Meehl 01N-65W-24-9C
Project:	SEC.24-T1N-R65W	TVD Reference:	WELL @ 5038.5ft (RKB - 16.5')
Reference Site:	Meehl 01N-65W-24 Pad Sec.24-T01N-R65W	MD Reference:	WELL @ 5038.5ft (RKB - 16.5')
Site Error:	0.0ft	North Reference:	True
Reference Well:	Meehl 01N-65W-24-9C	Survey Calculation Method:	Minimum Curvature
Well Error:	0.0ft	Output errors are at	2.00 sigma
Reference Wellbore	Wellbore #1	Database:	landmark
Reference Design:	Plan #1 (10-17-14)	Offset TVD Reference:	Offset Datum

Offset Design													Offset Site Error:	0.0 ft
Survey Program: 0-MWD													Offset Well Error:	0.0 ft
Reference		Offset		Semi Major Axis			Distance							Warning
Measured Depth (ft)	Vertical Depth (ft)	Measured Depth (ft)	Vertical Depth (ft)	Reference (ft)	Offset (ft)	Highside Toolface (°)	Offset Wellbore Centre +N/-S (ft)	+E/-W (ft)	Between Centres (ft)	Between Ellipses (ft)	Minimum Separation (ft)	Separation Factor		
0.0	0.0	0.0	0.0	0.0	0.0	-89.97	0.0	-59.9	59.9					
100.0	100.0	100.0	100.0	0.1	0.1	-89.97	0.0	-59.9	59.9	59.7	0.22	266.626		
200.0	200.0	200.0	200.0	0.3	0.3	-89.97	0.0	-59.9	59.9	59.3	0.67	88.875 CC, ES		
300.0	300.0	300.0	300.0	0.5	0.6	164.84	0.0	-59.9	61.6	60.5	1.12	55.196		
400.0	399.8	399.8	399.8	0.8	0.8	165.99	0.0	-59.9	66.7	65.1	1.56	42.715		
500.0	499.5	499.5	499.5	1.0	1.0	167.56	0.0	-59.9	75.2	73.1	2.01	37.304		
600.0	598.7	598.7	598.7	1.3	1.2	169.24	0.0	-59.9	87.1	84.6	2.47	35.211		
700.0	697.5	697.5	697.5	1.6	1.5	170.83	0.0	-59.9	102.5	99.6	2.94	34.918		
800.0	795.6	795.6	795.6	2.0	1.7	172.21	0.0	-59.9	121.4	118.0	3.40	35.700		
900.0	893.1	893.1	893.1	2.5	1.9	173.37	0.0	-59.9	143.7	139.9	3.87	37.163		
1,000.0	989.8	989.8	989.8	3.0	2.1	174.34	0.0	-59.9	169.0	164.7	4.34	38.960		
1,100.0	1,086.4	1,086.4	1,086.4	3.5	2.3	175.09	0.0	-59.9	194.7	189.9	4.81	40.437		
1,200.0	1,183.0	1,183.0	1,183.0	4.0	2.5	175.66	0.0	-59.9	220.4	215.1	5.30	41.619		
1,300.0	1,279.6	1,279.6	1,279.6	4.6	2.8	176.12	0.0	-59.9	246.1	240.3	5.78	42.583		
1,400.0	1,376.2	1,376.2	1,376.2	5.1	3.0	176.49	0.0	-59.9	271.8	265.6	6.27	43.382		
1,500.0	1,472.9	1,472.9	1,472.9	5.7	3.2	176.79	0.0	-59.9	297.6	290.8	6.75	44.054		
1,600.0	1,569.5	1,569.5	1,569.5	6.2	3.4	177.05	0.0	-59.9	323.3	316.1	7.25	44.627		
1,700.0	1,666.1	1,666.1	1,666.1	6.8	3.6	177.26	0.0	-59.9	349.1	341.3	7.74	45.119		
1,800.0	1,762.7	1,762.7	1,762.7	7.3	3.8	177.45	0.0	-59.9	374.8	366.6	8.23	45.548		
1,900.0	1,859.3	1,859.3	1,859.3	7.9	4.1	177.62	0.0	-59.9	400.6	391.9	8.72	45.924		
2,000.0	1,956.0	1,956.0	1,956.0	8.4	4.3	177.76	0.0	-59.9	426.4	417.1	9.22	46.256		
2,100.0	2,052.6	2,060.2	2,060.2	9.0	4.5	177.85	-0.5	-59.5	451.7	442.0	9.71	46.502		
2,200.0	2,149.2	2,172.1	2,172.0	9.5	4.7	177.65	-3.9	-56.6	474.3	464.1	10.20	46.517		
2,300.0	2,245.8	2,285.4	2,284.9	10.1	4.9	177.15	-10.9	-50.8	493.9	483.2	10.68	46.222		
2,400.0	2,342.4	2,394.9	2,393.7	10.6	5.1	176.42	-20.7	-42.6	510.5	499.3	11.18	45.649		
2,500.0	2,439.1	2,493.4	2,491.4	11.2	5.4	175.74	-30.4	-34.6	526.4	514.7	11.68	45.072		
2,600.0	2,535.7	2,592.0	2,589.1	11.8	5.6	175.11	-40.0	-26.6	542.4	530.3	12.19	44.508		
2,700.0	2,632.3	2,690.5	2,686.9	12.3	5.8	174.50	-49.6	-18.6	558.5	545.8	12.70	43.962		
2,800.0	2,728.9	2,789.0	2,784.6	12.9	6.1	173.93	-59.3	-10.5	574.6	561.4	13.23	43.432		
2,900.0	2,825.5	2,887.6	2,882.3	13.4	6.3	173.40	-68.9	-2.5	590.8	577.1	13.77	42.920		
3,000.0	2,922.2	2,986.1	2,980.1	14.0	6.6	172.89	-78.5	5.5	607.0	592.7	14.31	42.426		
3,100.0	3,018.8	3,084.7	3,077.8	14.5	6.8	172.41	-88.2	13.5	623.3	608.5	14.86	41.951		
3,200.0	3,115.4	3,183.2	3,175.5	15.1	7.1	171.95	-97.8	21.6	639.6	624.2	15.41	41.494		
3,300.0	3,212.0	3,281.7	3,273.3	15.6	7.4	171.51	-107.4	29.6	656.0	640.0	15.98	41.056		
3,400.0	3,308.7	3,380.3	3,371.1	16.2	7.6	171.12	-117.1	37.6	672.0	655.4	16.56	40.589		
3,500.0	3,406.2	3,479.3	3,469.3	16.5	7.9	170.72	-126.8	45.7	685.0	667.9	17.10	40.050		
3,600.0	3,504.4	3,578.7	3,567.8	16.9	8.2	170.28	-136.5	53.8	694.7	677.0	17.63	39.397		
3,700.0	3,603.1	3,678.3	3,666.6	17.2	8.5	169.79	-146.2	61.9	701.0	682.8	18.14	38.639		
3,800.0	3,702.4	3,778.0	3,765.5	17.4	8.8	169.24	-156.0	70.0	703.9	685.3	18.63	37.785		
3,900.0	3,802.0	3,877.7	3,864.4	17.6	9.1	168.64	-165.7	78.1	703.5	684.4	19.09	36.841		
4,000.0	3,901.9	3,977.3	3,963.2	17.7	9.4	167.96	-175.4	86.2	699.7	680.2	19.54	35.810		
4,100.0	4,001.8	4,076.7	4,061.8	17.8	9.7	-87.19	-185.2	94.3	692.6	672.6	20.00	34.633		
4,200.0	4,101.8	4,175.8	4,160.1	18.0	10.0	-87.97	-194.9	102.4	684.0	663.5	20.50	33.363		
4,300.0	4,201.8	4,271.9	4,255.4	18.1	10.3	-88.74	-204.2	110.2	675.6	654.6	21.00	32.174		
4,400.0	4,301.8	4,358.1	4,341.2	18.2	10.5	-89.33	-211.2	116.0	668.7	647.3	21.42	31.217		
4,500.0	4,401.8	4,444.8	4,427.6	18.3	10.7	-89.76	-216.2	120.1	663.9	642.0	21.82	30.429		
4,600.0	4,501.8	4,531.8	4,514.5	18.4	10.9	-90.02	-219.2	122.7	661.0	638.8	22.18	29.794		
4,700.0	4,601.8	4,619.2	4,601.8	18.5	11.1	-90.10	-220.2	123.5	660.0	637.5	22.53	29.302		
4,800.0	4,701.8	4,719.2	4,701.8	18.6	11.2	-90.10	-220.2	123.5	660.0	637.1	22.88	28.848		
4,900.0	4,801.8	4,819.2	4,801.8	18.7	11.4	-90.10	-220.2	123.5	660.0	636.8	23.24	28.402		
5,000.0	4,901.8	4,919.2	4,901.8	18.8	11.6	-90.10	-220.2	123.5	660.0	636.4	23.60	27.967		
5,100.0	5,001.8	5,019.2	5,001.8	19.0	11.8	-90.10	-220.2	123.5	660.0	636.1	23.97	27.541		

CC - Min centre to center distance or convergent point, SF - min separation factor, ES - min ellipse separation

Company:	Verdad Oil & Gas Corporation	Local Co-ordinate Reference:	Well Meehl 01N-65W-24-9C
Project:	SEC.24-T1N-R65W	TVD Reference:	WELL @ 5038.5ft (RKB - 16.5')
Reference Site:	Meehl 01N-65W-24 Pad Sec.24-T01N-R65W	MD Reference:	WELL @ 5038.5ft (RKB - 16.5')
Site Error:	0.0ft	North Reference:	True
Reference Well:	Meehl 01N-65W-24-9C	Survey Calculation Method:	Minimum Curvature
Well Error:	0.0ft	Output errors are at	2.00 sigma
Reference Wellbore	Wellbore #1	Database:	landmark
Reference Design:	Plan #1 (10-17-14)	Offset TVD Reference:	Offset Datum

Offset Design												Offset Site Error:	0.0 ft
Survey Program: 0-MWD												Offset Well Error:	0.0 ft
Reference		Offset		Semi Major Axis			Distance						
Measured Depth (ft)	Vertical Depth (ft)	Measured Depth (ft)	Vertical Depth (ft)	Reference (ft)	Offset (ft)	Highside Toolface (°)	Offset Wellbore Centre +N/-S (ft)	+E/-W (ft)	Between Centres (ft)	Between Ellipses (ft)	Minimum Separation (ft)	Separation Factor	Warning
5,200.0	5,101.8	5,119.2	5,101.8	19.1	12.0	-90.10	-220.2	123.5	660.0	635.7	24.33	27.125	
5,300.0	5,201.8	5,219.2	5,201.8	19.2	12.2	-90.10	-220.2	123.5	660.0	635.3	24.70	26.719	
5,400.0	5,301.8	5,319.2	5,301.8	19.3	12.4	-90.10	-220.2	123.5	660.0	635.0	25.08	26.322	
5,500.0	5,401.8	5,419.2	5,401.8	19.5	12.6	-90.10	-220.2	123.5	660.0	634.6	25.45	25.934	
5,600.0	5,501.8	5,519.2	5,501.8	19.6	12.8	-90.10	-220.2	123.5	660.0	634.2	25.83	25.555	
5,700.0	5,601.8	5,619.2	5,601.8	19.7	13.0	-90.10	-220.2	123.5	660.0	633.8	26.21	25.184	
5,800.0	5,701.8	5,719.2	5,701.8	19.8	13.1	-90.10	-220.2	123.5	660.0	633.4	26.59	24.823	
5,900.0	5,801.8	5,819.2	5,801.8	20.0	13.3	-90.10	-220.2	123.5	660.0	633.1	26.97	24.469	
6,000.0	5,901.8	5,919.2	5,901.8	20.1	13.5	-90.10	-220.2	123.5	660.0	632.7	27.36	24.124	
6,100.0	6,001.8	6,019.2	6,001.8	20.3	13.7	-90.10	-220.2	123.5	660.0	632.3	27.75	23.787	
6,200.0	6,101.8	6,119.2	6,101.8	20.4	13.9	-90.10	-220.2	123.5	660.0	631.9	28.14	23.458	
6,300.0	6,201.8	6,219.2	6,201.8	20.5	14.1	-90.10	-220.2	123.5	660.0	631.5	28.53	23.136	
6,400.0	6,301.8	6,319.2	6,301.8	20.7	14.3	-90.10	-220.2	123.5	660.0	631.1	28.92	22.822	
6,500.0	6,401.8	6,419.2	6,401.8	20.8	14.5	-90.10	-220.2	123.5	660.0	630.7	29.32	22.515	
6,600.0	6,501.8	6,519.2	6,501.8	21.0	14.7	-90.10	-220.2	123.5	660.0	630.3	29.71	22.214	
6,700.0	6,601.8	6,619.2	6,601.8	21.1	14.9	-90.10	-220.2	123.5	660.0	629.9	30.11	21.921	
6,800.0	6,701.8	6,719.2	6,701.8	21.3	15.2	-90.10	-220.2	123.5	660.0	629.5	30.51	21.634	
6,900.0	6,801.8	6,819.2	6,801.9	21.4	15.4	-90.34	-220.1	123.5	660.0	629.1	30.89	21.369	
7,000.0	6,901.0	6,920.0	6,901.9	21.5	15.5	-90.34	-208.6	123.5	660.0	628.8	31.19	21.159	
7,100.0	6,996.3	7,020.7	6,997.7	21.6	15.6	-90.32	-178.1	123.7	660.0	628.7	31.36	21.045	
7,200.0	7,084.0	7,121.4	7,085.8	21.6	15.7	-90.29	-129.8	123.9	660.0	628.6	31.46	20.977	
7,300.0	7,161.0	7,222.0	7,163.0	21.6	15.7	-90.24	-65.5	124.1	660.0	628.4	31.61	20.882	
7,400.0	7,224.5	7,322.5	7,226.3	21.6	15.8	-90.19	12.3	124.5	660.0	628.1	31.91	20.682	
7,500.0	7,272.1	7,422.8	7,273.5	21.7	15.8	-90.13	100.7	124.8	660.0	627.5	32.49	20.317	
7,600.0	7,302.1	7,523.1	7,302.9	21.8	16.3	-90.07	196.4	125.2	660.0	626.6	33.39	19.764	
7,700.0	7,313.4	7,623.1	7,313.4	22.0	17.0	-90.01	295.8	125.7	660.0	625.4	34.64	19.054	
7,800.0	7,313.1	7,723.2	7,313.1	22.4	17.8	-90.00	395.8	126.1	660.0	623.8	36.23	18.216	
7,900.0	7,312.8	7,823.2	7,312.8	22.9	18.8	-90.00	495.8	126.5	660.0	621.9	38.13	17.309	
8,000.0	7,312.4	7,923.2	7,312.4	23.6	19.9	-90.00	595.8	126.9	660.0	619.7	40.30	16.376	
8,100.0	7,312.1	8,023.2	7,312.1	24.6	21.2	-90.00	695.8	127.4	660.0	617.3	42.71	15.453	
8,200.0	7,311.7	8,123.2	7,311.7	25.6	22.5	-90.00	795.8	127.8	660.0	614.7	45.31	14.565	
8,300.0	7,311.4	8,223.2	7,311.4	26.8	23.9	-90.00	895.8	128.2	660.0	611.9	48.08	13.727	
8,400.0	7,311.0	8,323.2	7,311.0	28.1	25.4	-90.00	995.8	128.6	660.0	609.0	50.98	12.945	
8,500.0	7,310.7	8,423.2	7,310.7	29.4	26.9	-90.00	1,095.8	129.1	660.0	606.0	54.00	12.221	
8,600.0	7,310.3	8,523.2	7,310.3	30.8	28.5	-90.00	1,195.8	129.5	660.0	602.9	57.12	11.555	
8,700.0	7,310.0	8,623.2	7,310.0	32.3	30.1	-90.00	1,295.8	129.9	660.0	599.7	60.32	10.942	
8,800.0	7,309.6	8,723.2	7,309.6	33.8	31.7	-90.00	1,395.8	130.3	660.0	596.4	63.59	10.379	
8,900.0	7,309.3	8,823.2	7,309.3	35.4	33.4	-90.00	1,495.8	130.8	660.0	593.1	66.91	9.863	
9,000.0	7,308.9	8,923.2	7,308.9	37.0	35.1	-90.00	1,595.8	131.2	660.0	589.7	70.29	9.389	
9,100.0	7,308.6	9,023.2	7,308.6	38.6	36.8	-90.00	1,695.8	131.6	660.0	586.3	73.72	8.953	
9,200.0	7,308.2	9,123.2	7,308.2	40.3	38.5	-90.00	1,795.8	132.0	660.0	582.8	77.18	8.552	
9,300.0	7,307.9	9,223.2	7,307.9	42.0	40.3	-90.00	1,895.8	132.5	660.0	579.3	80.67	8.181	
9,400.0	7,307.5	9,323.2	7,307.5	43.6	42.1	-90.00	1,995.8	132.9	660.0	575.8	84.19	7.839	
9,500.0	7,307.2	9,423.2	7,307.2	45.4	43.8	-90.00	2,095.8	133.3	660.0	572.2	87.74	7.522	
9,600.0	7,306.8	9,523.2	7,306.8	47.1	45.6	-90.00	2,195.7	133.7	660.0	568.7	91.31	7.228	
9,700.0	7,306.5	9,623.2	7,306.5	48.8	47.4	-90.00	2,295.7	134.2	660.0	565.1	94.90	6.954	
9,800.0	7,306.1	9,723.2	7,306.1	50.6	49.2	-90.00	2,395.7	134.6	660.0	561.5	98.51	6.699	
9,900.0	7,305.8	9,823.2	7,305.8	52.4	51.0	-90.00	2,495.7	135.0	660.0	557.8	102.14	6.462	
10,000.0	7,305.4	9,923.2	7,305.4	54.1	52.9	-90.00	2,595.7	135.5	660.0	554.2	105.78	6.239	
10,100.0	7,305.1	10,023.2	7,305.1	55.9	54.7	-90.00	2,695.7	135.9	660.0	550.5	109.43	6.031	
10,200.0	7,304.7	10,123.2	7,304.7	57.7	56.5	-90.00	2,795.7	136.3	660.0	546.9	113.09	5.836	
10,300.0	7,304.4	10,223.2	7,304.4	59.5	58.4	-90.00	2,895.7	136.7	660.0	543.2	116.77	5.652	

CC - Min centre to center distance or convergent point, SF - min separation factor, ES - min ellipse separation

Company:	Verdad Oil & Gas Corporation	Local Co-ordinate Reference:	Well Meehl 01N-65W-24-9C
Project:	SEC.24-T1N-R65W	TVD Reference:	WELL @ 5038.5ft (RKB - 16.5')
Reference Site:	Meehl 01N-65W-24 Pad Sec.24-T01N-R65W	MD Reference:	WELL @ 5038.5ft (RKB - 16.5')
Site Error:	0.0ft	North Reference:	True
Reference Well:	Meehl 01N-65W-24-9C	Survey Calculation Method:	Minimum Curvature
Well Error:	0.0ft	Output errors are at	2.00 sigma
Reference Wellbore	Wellbore #1	Database:	landmark
Reference Design:	Plan #1 (10-17-14)	Offset TVD Reference:	Offset Datum

Offset Design Meehl 01N-65W-24 Pad Sec.24-T01N-R65W - Meehl 01N-65W-24-5C - Wellbore #1 - Plan #1 (10-17-1												Offset Site Error:	0.0 ft
Survey Program: 0-MWD												Offset Well Error:	0.0 ft
Reference		Offset		Semi Major Axis			Distance						
Measured Depth (ft)	Vertical Depth (ft)	Measured Depth (ft)	Vertical Depth (ft)	Reference (ft)	Offset (ft)	Highside Toolface (°)	Offset Wellbore Centre +N/-S (ft)	+E/-W (ft)	Between Centres (ft)	Between Ellipses (ft)	Minimum Separation (ft)	Separation Factor	Warning
10,400.0	7,304.0	10,323.2	7,304.0	61.3	60.2	-90.00	2,995.7	137.2	660.0	539.5	120.45	5.479	
10,500.0	7,303.7	10,423.2	7,303.7	63.1	62.1	-90.00	3,095.7	137.6	660.0	535.8	124.14	5.316	
10,600.0	7,303.3	10,523.2	7,303.3	64.9	63.9	-90.00	3,195.7	138.0	660.0	532.1	127.84	5.162	
10,700.0	7,303.0	10,623.2	7,303.0	66.8	65.8	-90.00	3,295.7	138.4	660.0	528.4	131.55	5.017	
10,800.0	7,302.6	10,723.2	7,302.6	68.6	67.6	-90.00	3,395.7	138.9	660.0	524.7	135.27	4.879	
10,900.0	7,302.3	10,823.2	7,302.3	70.4	69.5	-90.00	3,495.7	139.3	660.0	521.0	138.99	4.748	
11,000.0	7,301.9	10,923.2	7,301.9	72.3	71.4	-90.00	3,595.7	139.7	660.0	517.2	142.71	4.624	
11,100.0	7,301.6	11,023.2	7,301.6	74.1	73.2	-90.00	3,695.7	140.1	660.0	513.5	146.44	4.507	
11,200.0	7,301.2	11,123.2	7,301.2	76.0	75.1	-90.00	3,795.7	140.6	660.0	509.8	150.18	4.394	
11,300.0	7,300.9	11,223.2	7,300.9	77.8	77.0	-90.00	3,895.7	141.0	660.0	506.0	153.92	4.288	
11,400.0	7,300.6	11,323.2	7,300.5	79.7	78.8	-90.00	3,995.7	141.4	660.0	502.3	157.67	4.186	
11,500.0	7,300.2	11,423.2	7,300.2	81.5	80.7	-90.00	4,095.7	141.8	660.0	498.5	161.42	4.089	
11,600.0	7,299.9	11,523.2	7,299.9	83.4	82.6	-90.00	4,195.7	142.3	660.0	494.8	165.17	3.996	
11,700.0	7,299.5	11,623.2	7,299.5	85.2	84.5	-90.00	4,295.7	142.7	660.0	491.0	168.93	3.907	
11,800.0	7,299.2	11,723.2	7,299.2	87.1	86.4	-90.00	4,395.7	143.1	660.0	487.3	172.68	3.822	
11,900.0	7,298.8	11,823.2	7,298.8	89.0	88.2	-90.00	4,495.7	143.5	659.9	483.5	176.45	3.740	
11,959.6	7,298.6	11,882.8	7,298.6	90.1	89.4	-90.00	4,555.4	143.8	659.9	481.3	178.69	3.693	
11,987.4	7,298.5	11,910.2	7,298.5	90.6	89.8	-90.00	4,582.8	143.9	659.9	480.3	179.69	3.673 SF	

Company:	Verdad Oil & Gas Corporation	Local Co-ordinate Reference:	Well Meehl 01N-65W-24-9C
Project:	SEC.24-T1N-R65W	TVD Reference:	WELL @ 5038.5ft (RKB - 16.5')
Reference Site:	Meehl 01N-65W-24 Pad Sec.24-T01N-R65W	MD Reference:	WELL @ 5038.5ft (RKB - 16.5')
Site Error:	0.0ft	North Reference:	True
Reference Well:	Meehl 01N-65W-24-9C	Survey Calculation Method:	Minimum Curvature
Well Error:	0.0ft	Output errors are at	2.00 sigma
Reference Wellbore	Wellbore #1	Database:	landmark
Reference Design:	Plan #1 (10-17-14)	Offset TVD Reference:	Offset Datum

Offset Design													Offset Site Error:	0.0 ft
Survey Program: 0-MWD													Offset Well Error:	0.0 ft
Reference		Offset		Semi Major Axis			Distance							Warning
Measured Depth (ft)	Vertical Depth (ft)	Measured Depth (ft)	Vertical Depth (ft)	Reference (ft)	Offset (ft)	Highside Toolface (°)	Offset Wellbore Centre +N/-S (ft)	+E/-W (ft)	Between Centres (ft)	Between Ellipses (ft)	Minimum Separation (ft)	Separation Factor		
0.0	0.0	0.0	0.0	0.0	0.0	-90.02	0.0	-45.1	45.1					
100.0	100.0	100.0	100.0	0.1	0.1	-90.02	0.0	-45.1	45.1	44.9	0.22	200.593		
200.0	200.0	200.0	200.0	0.3	0.3	-90.02	0.0	-45.1	45.1	44.4	0.67	66.864 CC, ES		
300.0	300.0	300.0	300.0	0.5	0.6	164.93	0.0	-45.1	46.8	45.7	1.12	41.899		
400.0	399.8	399.8	399.8	0.8	0.8	166.41	0.0	-45.1	51.8	50.3	1.56	33.210		
500.0	499.5	499.5	499.5	1.0	1.0	168.32	0.0	-45.1	60.3	58.3	2.01	29.953		
600.0	598.7	598.7	598.7	1.3	1.2	170.24	0.0	-45.1	72.3	69.9	2.47	29.244		
700.0	697.5	697.5	697.5	1.6	1.5	171.92	0.0	-45.1	87.8	84.9	2.93	29.914		
800.0	795.6	795.6	795.6	2.0	1.7	173.32	0.0	-45.1	106.7	103.3	3.40	31.402		
900.0	893.1	893.1	893.1	2.5	1.9	174.44	0.0	-45.1	129.1	125.2	3.86	33.405		
1,000.0	989.8	989.8	989.8	3.0	2.1	175.33	0.0	-45.1	154.4	150.1	4.33	35.626		
1,100.0	1,086.4	1,086.4	1,086.4	3.5	2.3	176.00	0.0	-45.1	180.1	175.3	4.81	37.445		
1,200.0	1,183.0	1,183.0	1,183.0	4.0	2.5	176.50	0.0	-45.1	205.8	200.6	5.29	38.907		
1,300.0	1,279.6	1,279.6	1,279.6	4.6	2.8	176.89	0.0	-45.1	231.6	225.8	5.77	40.103		
1,400.0	1,376.2	1,376.2	1,376.2	5.1	3.0	177.20	0.0	-45.1	257.3	251.1	6.26	41.099		
1,500.0	1,472.9	1,480.3	1,480.3	5.7	3.2	177.39	-0.6	-44.1	282.1	275.4	6.75	41.825		
1,600.0	1,569.5	1,588.3	1,588.2	6.2	3.4	177.30	-3.4	-39.9	303.6	296.4	7.22	42.081		
1,700.0	1,666.1	1,697.9	1,697.3	6.8	3.6	176.95	-8.5	-32.2	321.6	313.9	7.70	41.785		
1,800.0	1,762.7	1,803.7	1,802.4	7.3	3.9	176.43	-15.5	-21.6	336.4	328.2	8.19	41.085		
1,900.0	1,859.3	1,902.6	1,900.5	7.9	4.1	175.95	-22.4	-11.2	350.6	341.9	8.68	40.375		
2,000.0	1,956.0	2,001.6	1,998.7	8.4	4.3	175.50	-29.2	-0.7	364.8	355.6	9.19	39.710		
2,100.0	2,052.6	2,100.5	2,096.8	9.0	4.6	175.08	-36.1	9.7	379.0	369.3	9.70	39.088		
2,200.0	2,149.2	2,199.5	2,195.0	9.5	4.9	174.70	-43.0	20.2	393.2	383.0	10.21	38.506		
2,300.0	2,245.8	2,298.4	2,293.2	10.1	5.1	174.34	-49.9	30.6	407.5	396.7	10.73	37.962		
2,400.0	2,342.4	2,397.4	2,391.3	10.6	5.4	174.01	-56.7	41.1	421.7	410.5	11.26	37.453		
2,500.0	2,439.1	2,496.3	2,489.5	11.2	5.7	173.69	-63.6	51.5	436.0	424.2	11.79	36.976		
2,600.0	2,535.7	2,595.3	2,587.6	11.8	6.0	173.40	-70.5	62.0	450.3	438.0	12.33	36.530		
2,700.0	2,632.3	2,694.2	2,685.8	12.3	6.3	173.13	-77.4	72.4	464.6	451.8	12.87	36.111		
2,800.0	2,728.9	2,793.2	2,783.9	12.9	6.6	172.87	-84.3	82.9	478.9	465.5	13.41	35.718		
2,900.0	2,825.5	2,892.1	2,882.1	13.4	6.9	172.63	-91.1	93.3	493.3	479.3	13.95	35.348		
3,000.0	2,922.2	2,991.1	2,980.2	14.0	7.2	172.40	-98.0	103.7	507.6	493.1	14.50	35.001		
3,100.0	3,018.8	3,090.0	3,078.4	14.5	7.5	172.18	-104.9	114.2	521.9	506.9	15.05	34.673		
3,200.0	3,115.4	3,189.0	3,176.5	15.1	7.8	171.97	-111.8	124.6	536.3	520.7	15.61	34.364		
3,300.0	3,212.0	3,287.9	3,274.7	15.6	8.1	171.78	-118.7	135.1	550.6	534.5	16.16	34.072		
3,400.0	3,308.7	3,386.9	3,372.9	16.2	8.4	171.61	-125.5	145.5	564.6	547.8	16.72	33.757		
3,500.0	3,406.2	3,486.3	3,471.5	16.5	8.7	171.41	-132.4	156.0	575.5	558.3	17.25	33.356		
3,600.0	3,504.4	3,585.9	3,570.4	16.9	9.0	171.17	-139.4	166.6	583.1	565.3	17.76	32.827		
3,700.0	3,603.1	3,685.8	3,669.4	17.2	9.3	170.86	-146.3	177.1	587.2	569.0	18.25	32.182		
3,800.0	3,702.4	3,785.7	3,768.5	17.4	9.7	170.49	-153.3	187.6	587.9	569.2	18.71	31.427		
3,900.0	3,802.0	3,885.6	3,867.6	17.6	10.0	170.06	-160.2	198.2	585.2	566.1	19.14	30.569		
4,000.0	3,901.9	3,985.3	3,966.5	17.7	10.3	169.54	-167.1	208.7	579.1	559.5	19.56	29.611		
4,100.0	4,001.8	4,084.6	4,065.1	17.8	10.6	-85.44	-174.0	219.2	569.6	549.6	19.98	28.507		
4,200.0	4,101.8	4,183.8	4,163.5	18.0	10.9	-86.07	-180.9	229.7	558.5	538.1	20.46	27.301		
4,300.0	4,201.8	4,283.0	4,261.9	18.1	11.3	-86.72	-187.8	240.1	547.5	526.6	20.94	26.144		
4,400.0	4,301.8	4,382.2	4,360.3	18.2	11.6	-87.39	-194.7	250.6	536.6	515.2	21.44	25.033		
4,500.0	4,401.8	4,481.4	4,458.7	18.3	11.9	-88.09	-201.6	261.1	525.8	503.8	21.94	23.965		
4,600.0	4,501.8	4,578.1	4,554.5	18.4	12.2	-88.81	-208.3	271.3	515.1	492.6	22.44	22.957		
4,700.0	4,601.8	4,664.5	4,640.5	18.5	12.4	-89.36	-213.3	278.9	506.1	483.3	22.85	22.151		
4,800.0	4,701.8	4,751.4	4,727.1	18.6	12.6	-89.76	-216.9	284.4	499.8	476.6	23.23	21.510		
4,900.0	4,801.8	4,838.6	4,814.2	18.7	12.8	-90.01	-219.1	287.6	496.0	472.4	23.60	21.022		
5,000.0	4,901.8	4,926.2	4,901.8	18.8	12.9	-90.09	-219.8	288.7	494.8	470.9	23.93	20.675		
5,100.0	5,001.8	5,026.2	5,001.8	19.0	13.1	-90.09	-219.8	288.7	494.8	470.5	24.29	20.373		

CC - Min centre to center distance or convergent point, SF - min separation factor, ES - min ellipse separation

Company:	Verdad Oil & Gas Corporation	Local Co-ordinate Reference:	Well Meehl 01N-65W-24-9C
Project:	SEC.24-T1N-R65W	TVD Reference:	WELL @ 5038.5ft (RKB - 16.5')
Reference Site:	Meehl 01N-65W-24 Pad Sec.24-T01N-R65W	MD Reference:	WELL @ 5038.5ft (RKB - 16.5')
Site Error:	0.0ft	North Reference:	True
Reference Well:	Meehl 01N-65W-24-9C	Survey Calculation Method:	Minimum Curvature
Well Error:	0.0ft	Output errors are at	2.00 sigma
Reference Wellbore	Wellbore #1	Database:	landmark
Reference Design:	Plan #1 (10-17-14)	Offset TVD Reference:	Offset Datum

Offset Design												Offset Site Error:	0.0 ft
Survey Program: 0-MWD												Offset Well Error:	0.0 ft
Reference		Offset		Semi Major Axis			Distance						
Measured Depth (ft)	Vertical Depth (ft)	Measured Depth (ft)	Vertical Depth (ft)	Reference (ft)	Offset (ft)	Highside Toolface (°)	Offset Wellbore Centre +N/-S (ft)	+E/-W (ft)	Between Centres (ft)	Between Ellipses (ft)	Minimum Separation (ft)	Separation Factor	Warning
5,200.0	5,101.8	5,126.2	5,101.8	19.1	13.2	-90.09	-219.8	288.7	494.8	470.1	24.64	20.078	
5,300.0	5,201.8	5,226.2	5,201.8	19.2	13.4	-90.09	-219.8	288.7	494.8	469.8	25.00	19.789	
5,400.0	5,301.8	5,326.2	5,301.8	19.3	13.6	-90.09	-219.8	288.7	494.8	469.4	25.37	19.506	
5,500.0	5,401.8	5,426.2	5,401.8	19.5	13.7	-90.09	-219.8	288.7	494.8	469.1	25.73	19.229	
5,600.0	5,501.8	5,526.2	5,501.8	19.6	13.9	-90.09	-219.8	288.7	494.8	468.7	26.10	18.958	
5,700.0	5,601.8	5,626.2	5,601.8	19.7	14.1	-90.09	-219.8	288.7	494.8	468.3	26.47	18.692	
5,800.0	5,701.8	5,726.2	5,701.8	19.8	14.3	-90.09	-219.8	288.7	494.8	467.9	26.84	18.432	
5,900.0	5,801.8	5,826.2	5,801.8	20.0	14.5	-90.09	-219.8	288.7	494.8	467.6	27.22	18.178	
6,000.0	5,901.8	5,926.2	5,901.8	20.1	14.6	-90.09	-219.8	288.7	494.8	467.2	27.60	17.930	
6,100.0	6,001.8	6,026.2	6,001.8	20.3	14.8	-90.09	-219.8	288.7	494.8	466.8	27.98	17.686	
6,200.0	6,101.8	6,126.2	6,101.8	20.4	15.0	-90.09	-219.8	288.7	494.8	466.4	28.36	17.448	
6,300.0	6,201.8	6,226.2	6,201.8	20.5	15.2	-90.09	-219.8	288.7	494.8	466.0	28.74	17.216	
6,400.0	6,301.8	6,326.2	6,301.8	20.7	15.4	-90.09	-219.8	288.7	494.8	465.7	29.13	16.988	
6,500.0	6,401.8	6,426.2	6,401.8	20.8	15.6	-90.09	-219.8	288.7	494.8	465.3	29.51	16.765	
6,600.0	6,501.8	6,526.2	6,501.8	21.0	15.7	-90.09	-219.8	288.7	494.8	464.9	29.90	16.547	
6,700.0	6,601.8	6,626.3	6,601.9	21.1	15.9	-90.08	-219.7	288.7	494.8	464.5	30.29	16.335	
6,745.6	6,647.5	6,672.0	6,647.5	21.2	16.0	-89.76	-216.9	288.7	494.8	464.4	30.43	16.262	
6,800.0	6,701.8	6,725.3	6,700.1	21.3	16.1	-88.80	-208.6	288.8	494.9	464.3	30.51	16.218	
6,900.0	6,801.8	6,817.0	6,787.8	21.4	16.2	-85.94	-181.9	288.9	496.2	465.7	30.52	16.259	
7,000.0	6,901.0	6,900.0	6,861.9	21.5	16.2	-82.24	-144.9	289.0	500.0	469.6	30.46	16.418	
7,100.0	6,996.3	6,983.1	6,929.4	21.6	16.2	-78.70	-96.5	289.2	505.5	475.1	30.39	16.632	
7,200.0	7,084.0	7,061.5	6,985.2	21.6	16.2	-75.63	-41.5	289.5	511.9	481.5	30.34	16.873	
7,300.0	7,161.0	7,137.8	7,030.9	21.6	16.2	-73.02	19.4	289.7	518.4	488.1	30.28	17.120	
7,400.0	7,224.5	7,212.4	7,066.7	21.6	16.2	-70.92	84.8	290.0	524.3	494.1	30.25	17.331	
7,500.0	7,272.1	7,285.9	7,092.4	21.7	16.3	-69.38	153.6	290.3	529.1	498.8	30.32	17.448	
7,600.0	7,302.1	7,358.7	7,108.0	21.8	16.6	-68.41	224.6	290.6	532.3	501.7	30.62	17.384	
7,700.0	7,313.4	7,431.0	7,113.7	22.0	17.1	-68.02	296.7	290.9	533.6	502.4	31.23	17.088	
7,800.0	7,313.1	7,528.4	7,113.2	22.4	17.9	-68.00	394.1	291.3	533.7	501.0	32.62	16.360	
7,900.0	7,312.8	7,628.4	7,112.8	22.9	18.9	-67.99	494.1	291.7	533.7	499.3	34.36	15.532	
8,000.0	7,312.4	7,728.4	7,112.3	23.6	20.0	-67.98	594.1	292.1	533.8	497.4	36.38	14.674	
8,100.0	7,312.1	7,828.4	7,111.8	24.6	21.2	-67.97	694.1	292.5	533.8	495.2	38.62	13.823	
8,200.0	7,311.7	7,928.4	7,111.4	25.6	22.6	-67.96	794.1	293.0	533.9	492.8	41.05	13.005	
8,300.0	7,311.4	8,028.4	7,110.9	26.8	24.0	-67.94	894.1	293.4	533.9	490.3	43.64	12.233	
8,400.0	7,311.0	8,128.4	7,110.4	28.1	25.4	-67.93	994.1	293.8	534.0	487.6	46.37	11.516	
8,500.0	7,310.7	8,228.4	7,109.9	29.4	27.0	-67.92	1,094.1	294.2	534.0	484.8	49.20	10.853	
8,600.0	7,310.3	8,328.4	7,109.5	30.8	28.5	-67.91	1,194.1	294.6	534.1	481.9	52.13	10.245	
8,700.0	7,310.0	8,428.4	7,109.0	32.3	30.1	-67.90	1,294.1	295.1	534.1	479.0	55.14	9.687	
8,800.0	7,309.6	8,528.4	7,108.5	33.8	31.8	-67.88	1,394.1	295.5	534.2	476.0	58.21	9.177	
8,900.0	7,309.3	8,628.4	7,108.1	35.4	33.4	-67.87	1,494.1	295.9	534.2	472.9	61.33	8.710	
9,000.0	7,308.9	8,728.4	7,107.6	37.0	35.1	-67.86	1,594.1	296.3	534.3	469.8	64.50	8.283	
9,100.0	7,308.6	8,828.4	7,107.1	38.6	36.9	-67.85	1,694.1	296.7	534.3	466.6	67.72	7.890	
9,200.0	7,308.2	8,928.4	7,106.6	40.3	38.6	-67.84	1,794.1	297.1	534.4	463.4	70.97	7.530	
9,300.0	7,307.9	9,028.4	7,106.2	42.0	40.3	-67.82	1,894.1	297.6	534.4	460.2	74.24	7.198	
9,400.0	7,307.5	9,128.4	7,105.7	43.6	42.1	-67.81	1,994.1	298.0	534.5	456.9	77.55	6.892	
9,500.0	7,307.2	9,228.4	7,105.2	45.4	43.9	-67.80	2,094.1	298.4	534.5	453.6	80.88	6.609	
9,600.0	7,306.8	9,328.4	7,104.8	47.1	45.7	-67.79	2,194.1	298.8	534.6	450.3	84.23	6.347	
9,700.0	7,306.5	9,428.4	7,104.3	48.8	47.5	-67.78	2,294.1	299.2	534.6	447.0	87.59	6.104	
9,800.0	7,306.1	9,528.4	7,103.8	50.6	49.3	-67.76	2,394.1	299.7	534.7	443.7	90.97	5.877	
9,900.0	7,305.8	9,628.4	7,103.3	52.4	51.1	-67.75	2,494.1	300.1	534.7	440.4	94.37	5.666	
10,000.0	7,305.4	9,728.4	7,102.9	54.1	52.9	-67.74	2,594.1	300.5	534.8	437.0	97.78	5.469	
10,100.0	7,305.1	9,828.4	7,102.4	55.9	54.7	-67.73	2,694.1	300.9	534.8	433.6	101.20	5.285	
10,200.0	7,304.7	9,928.4	7,101.9	57.7	56.6	-67.72	2,794.0	301.3	534.9	430.3	104.63	5.112	

CC - Min centre to center distance or convergent point, SF - min separation factor, ES - min ellipse separation

Company:	Verdad Oil & Gas Corporation	Local Co-ordinate Reference:	Well Meehl 01N-65W-24-9C
Project:	SEC.24-T1N-R65W	TVD Reference:	WELL @ 5038.5ft (RKB - 16.5')
Reference Site:	Meehl 01N-65W-24 Pad Sec.24-T01N-R65W	MD Reference:	WELL @ 5038.5ft (RKB - 16.5')
Site Error:	0.0ft	North Reference:	True
Reference Well:	Meehl 01N-65W-24-9C	Survey Calculation Method:	Minimum Curvature
Well Error:	0.0ft	Output errors are at	2.00 sigma
Reference Wellbore	Wellbore #1	Database:	landmark
Reference Design:	Plan #1 (10-17-14)	Offset TVD Reference:	Offset Datum

Offset Design Meehl 01N-65W-24 Pad Sec.24-T01N-R65W - Meehl 01N-65W-24-6N - Wellbore #1 - Plan #1 (10-17-1												Offset Site Error:	0.0 ft
Survey Program: 0-MWD												Offset Well Error:	0.0 ft
Reference		Offset		Semi Major Axis			Distance						
Measured Depth (ft)	Vertical Depth (ft)	Measured Depth (ft)	Vertical Depth (ft)	Reference (ft)	Offset (ft)	Highside Toolface (°)	Offset Wellbore Centre +N/-S (ft)	+E/-W (ft)	Between Centres (ft)	Between Ellipses (ft)	Minimum Separation (ft)	Separation Factor	Warning
10,300.0	7,304.4	10,028.4	7,101.5	59.5	58.4	-67.71	2,894.0	301.8	534.9	426.9	108.07	4.950	
10,400.0	7,304.0	10,128.4	7,101.0	61.3	60.3	-67.69	2,994.0	302.2	535.0	423.5	111.52	4.797	
10,500.0	7,303.7	10,228.4	7,100.5	63.1	62.1	-67.68	3,094.0	302.6	535.0	420.1	114.97	4.654	
10,600.0	7,303.3	10,328.4	7,100.0	64.9	64.0	-67.67	3,194.0	303.0	535.1	416.7	118.43	4.518	
10,700.0	7,303.0	10,428.4	7,099.6	66.8	65.8	-67.66	3,294.0	303.4	535.1	413.2	121.90	4.390	
10,800.0	7,302.6	10,528.4	7,099.1	68.6	67.7	-67.65	3,394.0	303.8	535.2	409.8	125.37	4.269	
10,900.0	7,302.3	10,628.4	7,098.6	70.4	69.5	-67.63	3,494.0	304.3	535.2	406.4	128.85	4.154	
11,000.0	7,301.9	10,728.4	7,098.2	72.3	71.4	-67.62	3,594.0	304.7	535.3	403.0	132.33	4.045	
11,100.0	7,301.6	10,828.4	7,097.7	74.1	73.3	-67.61	3,694.0	305.1	535.3	399.5	135.82	3.942	
11,200.0	7,301.2	10,928.4	7,097.2	76.0	75.1	-67.60	3,794.0	305.5	535.4	396.1	139.31	3.843	
11,300.0	7,300.9	11,028.4	7,096.7	77.8	77.0	-67.59	3,894.0	305.9	535.4	392.6	142.80	3.749	
11,400.0	7,300.6	11,128.4	7,096.3	79.7	78.9	-67.57	3,994.0	306.4	535.5	389.2	146.30	3.660	
11,500.0	7,300.2	11,228.4	7,095.8	81.5	80.7	-67.56	4,094.0	306.8	535.5	385.7	149.80	3.575	
11,600.0	7,299.9	11,328.4	7,095.3	83.4	82.6	-67.55	4,194.0	307.2	535.6	382.3	153.31	3.494	
11,700.0	7,299.5	11,428.4	7,094.9	85.2	84.5	-67.54	4,294.0	307.6	535.7	378.8	156.81	3.416	
11,800.0	7,299.2	11,528.4	7,094.4	87.1	86.4	-67.53	4,394.0	308.0	535.7	375.4	160.32	3.341	
11,900.0	7,298.8	11,628.4	7,093.9	89.0	88.3	-67.52	4,494.0	308.4	535.8	371.9	163.83	3.270	
11,987.4	7,298.5	11,715.8	7,093.5	90.6	89.9	-67.50	4,581.4	308.8	535.8	368.9	166.90	3.210 SF	

Company:	Verdad Oil & Gas Corporation	Local Co-ordinate Reference:	Well Meehl 01N-65W-24-9C
Project:	SEC.24-T1N-R65W	TVD Reference:	WELL @ 5038.5ft (RKB - 16.5')
Reference Site:	Meehl 01N-65W-24 Pad Sec.24-T01N-R65W	MD Reference:	WELL @ 5038.5ft (RKB - 16.5')
Site Error:	0.0ft	North Reference:	True
Reference Well:	Meehl 01N-65W-24-9C	Survey Calculation Method:	Minimum Curvature
Well Error:	0.0ft	Output errors are at	2.00 sigma
Reference Wellbore	Wellbore #1	Database:	landmark
Reference Design:	Plan #1 (10-17-14)	Offset TVD Reference:	Offset Datum

Offset Design													Offset Site Error:	0.0 ft
Survey Program: 0-MWD													Offset Well Error:	0.0 ft
Reference		Offset		Semi Major Axis			Distance							Warning
Measured Depth (ft)	Vertical Depth (ft)	Measured Depth (ft)	Vertical Depth (ft)	Reference (ft)	Offset (ft)	Highside Toolface (°)	Offset Wellbore Centre +N/-S (ft)	+E/-W (ft)	Between Centres (ft)	Between Ellipses (ft)	Minimum Separation (ft)	Separation Factor		
0.0	0.0	0.0	0.0	0.0	0.0	-89.96	0.0	-30.0	30.0					
100.0	100.0	100.0	100.0	0.1	0.1	-89.96	0.0	-30.0	30.0	29.7	0.22	133.313		
200.0	200.0	200.0	200.0	0.3	0.3	-89.96	0.0	-30.0	30.0	29.3	0.67	44.438 CC, ES		
300.0	300.0	300.0	300.0	0.5	0.6	165.26	0.0	-30.0	31.6	30.5	1.12	28.353		
400.0	399.8	399.8	399.8	0.8	0.8	167.32	0.0	-30.0	36.7	35.2	1.56	23.532		
500.0	499.5	499.5	499.5	1.0	1.0	169.71	0.0	-30.0	45.3	43.3	2.01	22.476		
600.0	598.7	598.7	598.7	1.3	1.2	171.85	0.0	-30.0	57.3	54.8	2.47	23.181		
700.0	697.5	697.5	697.5	1.6	1.5	173.56	0.0	-30.0	72.8	69.9	2.93	24.833		
800.0	795.6	795.6	795.6	2.0	1.7	174.86	0.0	-30.0	91.8	88.4	3.40	27.040		
900.0	893.1	893.1	893.1	2.5	1.9	175.84	0.0	-30.0	114.2	110.4	3.86	29.590		
1,000.0	989.8	989.8	989.8	3.0	2.1	176.58	0.0	-30.0	139.6	135.3	4.33	32.240		
1,100.0	1,086.4	1,086.4	1,086.4	3.5	2.3	177.11	0.0	-30.0	165.3	160.5	4.81	34.406		
1,200.0	1,183.0	1,183.0	1,183.0	4.0	2.5	177.50	0.0	-30.0	191.1	185.8	5.29	36.151		
1,300.0	1,279.6	1,286.0	1,286.0	4.6	2.8	177.75	-0.5	-28.8	215.7	209.9	5.76	37.431		
1,400.0	1,376.2	1,392.0	1,391.8	5.1	3.0	177.77	-2.6	-24.1	236.8	230.6	6.23	38.043		
1,500.0	1,472.9	1,499.5	1,498.9	5.7	3.2	177.62	-6.4	-15.7	254.4	247.7	6.70	37.957		
1,600.0	1,569.5	1,608.2	1,606.8	6.2	3.4	177.31	-12.0	-3.5	268.3	261.1	7.20	37.278		
1,700.0	1,666.1	1,716.5	1,713.7	6.8	3.7	176.87	-19.1	12.3	278.5	270.8	7.71	36.140		
1,800.0	1,762.7	1,816.1	1,811.7	7.3	4.0	176.44	-26.3	28.1	287.4	279.2	8.21	34.992		
1,900.0	1,859.3	1,915.6	1,909.8	7.9	4.3	176.03	-33.5	43.9	296.3	287.5	8.73	33.939		
2,000.0	1,956.0	2,015.2	2,007.9	8.4	4.6	175.64	-40.7	59.8	305.1	295.9	9.25	32.984		
2,100.0	2,052.6	2,114.8	2,105.9	9.0	5.0	175.28	-47.9	75.6	314.1	304.3	9.78	32.108		
2,200.0	2,149.2	2,214.4	2,204.0	9.5	5.3	174.93	-55.0	91.4	323.0	312.7	10.32	31.306		
2,300.0	2,245.8	2,314.0	2,302.0	10.1	5.7	174.61	-62.2	107.2	331.9	321.0	10.86	30.570		
2,400.0	2,342.4	2,413.6	2,400.1	10.6	6.0	174.30	-69.4	123.1	340.8	329.4	11.40	29.892		
2,500.0	2,439.1	2,513.1	2,498.1	11.2	6.4	174.01	-76.6	138.9	349.8	337.8	11.95	29.266		
2,600.0	2,535.7	2,612.7	2,596.2	11.8	6.8	173.73	-83.8	154.7	358.8	346.3	12.51	28.688		
2,700.0	2,632.3	2,712.3	2,694.2	12.3	7.1	173.47	-91.0	170.6	367.7	354.7	13.06	28.151		
2,800.0	2,728.9	2,811.9	2,792.3	12.9	7.5	173.21	-98.1	186.4	376.7	363.1	13.62	27.653		
2,900.0	2,825.5	2,911.5	2,890.3	13.4	7.9	172.97	-105.3	202.2	385.7	371.5	14.19	27.188		
3,000.0	2,922.2	3,011.1	2,988.4	14.0	8.3	172.74	-112.5	218.0	394.7	379.9	14.75	26.755		
3,100.0	3,018.8	3,110.6	3,086.5	14.5	8.7	172.53	-119.7	233.9	403.7	388.3	15.32	26.350		
3,200.0	3,115.4	3,210.2	3,184.5	15.1	9.1	172.32	-126.9	249.7	412.7	396.8	15.89	25.970		
3,300.0	3,212.0	3,309.8	3,282.6	15.6	9.4	172.12	-134.0	265.5	421.7	405.2	16.46	25.613		
3,400.0	3,308.7	3,409.4	3,380.7	16.2	9.8	171.93	-141.2	281.3	430.3	413.2	17.04	25.247		
3,500.0	3,406.2	3,509.2	3,478.9	16.5	10.2	171.69	-148.4	297.2	435.9	418.3	17.59	24.786		
3,600.0	3,504.4	3,609.2	3,577.4	16.9	10.6	171.39	-155.6	313.1	438.0	419.9	18.11	24.191		
3,700.0	3,603.1	3,709.1	3,675.8	17.2	11.0	171.01	-162.8	329.0	436.8	418.2	18.61	23.473		
3,800.0	3,702.4	3,809.0	3,774.1	17.4	11.4	170.53	-170.0	344.8	432.1	413.0	19.09	22.639		
3,900.0	3,802.0	3,908.5	3,872.1	17.6	11.8	169.96	-177.2	360.7	424.0	404.4	19.54	21.694		
4,000.0	3,901.9	4,007.8	3,969.8	17.7	12.2	169.26	-184.4	376.4	412.5	392.5	19.99	20.640		
4,100.0	4,001.8	4,106.5	4,067.0	17.8	12.6	-85.98	-191.5	392.1	397.7	377.3	20.46	19.443		
4,200.0	4,101.8	4,205.0	4,164.0	18.0	13.0	-86.89	-198.6	407.8	381.4	360.4	20.99	18.166		
4,300.0	4,201.8	4,296.9	4,254.6	18.1	13.3	-87.78	-205.0	421.9	365.7	344.2	21.50	17.006		
4,400.0	4,301.8	4,385.6	4,342.4	18.2	13.5	-88.55	-210.1	433.2	352.7	330.8	21.95	16.067		
4,500.0	4,401.8	4,475.0	4,431.3	18.3	13.8	-89.19	-214.2	442.1	342.7	320.3	22.38	15.310		
4,600.0	4,501.8	4,565.0	4,521.0	18.4	13.9	-89.67	-217.1	448.5	335.5	312.7	22.78	14.726		
4,700.0	4,601.8	4,655.3	4,611.2	18.5	14.1	-89.97	-218.8	452.4	331.2	308.1	23.15	14.307		
4,800.0	4,701.8	4,746.0	4,701.8	18.6	14.2	-90.07	-219.4	453.6	329.9	306.4	23.49	14.043		
4,900.0	4,801.8	4,846.0	4,801.8	18.7	14.4	-90.07	-219.4	453.6	329.9	306.0	23.84	13.839		
5,000.0	4,901.8	4,946.0	4,901.8	18.8	14.5	-90.07	-219.4	453.6	329.9	305.7	24.18	13.639		
5,100.0	5,001.8	5,046.0	5,001.8	19.0	14.7	-90.07	-219.4	453.6	329.9	305.3	24.54	13.443		

CC - Min centre to center distance or convergent point, SF - min separation factor, ES - min ellipse separation

Company:	Verdad Oil & Gas Corporation	Local Co-ordinate Reference:	Well Meehl 01N-65W-24-9C
Project:	SEC.24-T1N-R65W	TVD Reference:	WELL @ 5038.5ft (RKB - 16.5')
Reference Site:	Meehl 01N-65W-24 Pad Sec.24-T01N-R65W	MD Reference:	WELL @ 5038.5ft (RKB - 16.5')
Site Error:	0.0ft	North Reference:	True
Reference Well:	Meehl 01N-65W-24-9C	Survey Calculation Method:	Minimum Curvature
Well Error:	0.0ft	Output errors are at	2.00 sigma
Reference Wellbore	Wellbore #1	Database:	landmark
Reference Design:	Plan #1 (10-17-14)	Offset TVD Reference:	Offset Datum

Offset Design												Offset Site Error:	0.0 ft
Survey Program: 0-MWD												Offset Well Error:	0.0 ft
Reference		Offset		Semi Major Axis			Distance						Warning
Measured Depth (ft)	Vertical Depth (ft)	Measured Depth (ft)	Vertical Depth (ft)	Reference (ft)	Offset (ft)	Highside Toolface (°)	Offset Wellbore Centre +N/-S (ft)	+E/-W (ft)	Between Centres (ft)	Between Ellipses (ft)	Minimum Separation (ft)	Separation Factor	
5,200.0	5,101.8	5,146.0	5,101.8	19.1	14.8	-90.07	-219.4	453.6	329.9	305.0	24.89	13.251	
5,300.0	5,201.8	5,246.0	5,201.8	19.2	15.0	-90.07	-219.4	453.6	329.9	304.6	25.25	13.063	
5,400.0	5,301.8	5,346.0	5,301.8	19.3	15.2	-90.07	-219.4	453.6	329.9	304.3	25.61	12.879	
5,500.0	5,401.8	5,446.0	5,401.8	19.5	15.3	-90.07	-219.4	453.6	329.9	303.9	25.98	12.699	
5,600.0	5,501.8	5,546.0	5,501.8	19.6	15.5	-90.07	-219.4	453.6	329.9	303.5	26.34	12.522	
5,700.0	5,601.8	5,646.0	5,601.8	19.7	15.6	-90.07	-219.4	453.6	329.9	303.2	26.71	12.349	
5,800.0	5,701.8	5,746.0	5,701.8	19.8	15.8	-90.07	-219.4	453.6	329.9	302.8	27.08	12.179	
5,900.0	5,801.8	5,846.0	5,801.8	20.0	16.0	-90.07	-219.4	453.6	329.9	302.4	27.46	12.013	
6,000.0	5,901.8	5,946.0	5,901.8	20.1	16.1	-90.07	-219.4	453.6	329.9	302.0	27.83	11.851	
6,100.0	6,001.8	6,046.0	6,001.8	20.3	16.3	-90.07	-219.4	453.6	329.9	301.7	28.21	11.692	
6,200.0	6,101.8	6,146.0	6,101.8	20.4	16.5	-90.07	-219.4	453.6	329.9	301.3	28.59	11.537	
6,300.0	6,201.8	6,246.0	6,201.8	20.5	16.6	-90.07	-219.4	453.6	329.9	300.9	28.98	11.384	
6,400.0	6,301.8	6,346.0	6,301.8	20.7	16.8	-90.07	-219.4	453.6	329.9	300.5	29.36	11.235	
6,500.0	6,401.8	6,446.0	6,401.8	20.8	17.0	-90.07	-219.4	453.6	329.9	300.1	29.75	11.090	
6,600.0	6,501.8	6,546.0	6,501.8	21.0	17.2	-90.07	-219.4	453.6	329.9	299.7	30.13	10.947	
6,700.0	6,601.8	6,646.0	6,601.9	21.1	17.3	-90.05	-219.3	453.6	329.9	299.3	30.52	10.808	
6,733.7	6,635.6	6,679.7	6,635.6	21.2	17.4	-89.76	-217.6	453.6	329.9	299.2	30.61	10.776	
6,800.0	6,701.8	6,744.8	6,699.9	21.3	17.5	-88.13	-208.3	453.7	330.0	299.3	30.66	10.762	
6,900.0	6,801.8	6,836.3	6,787.4	21.4	17.6	-83.75	-181.7	453.8	332.1	301.6	30.54	10.874	
7,000.0	6,901.0	6,921.1	6,863.1	21.5	17.6	-78.19	-143.7	454.0	337.9	307.5	30.41	11.112	
7,100.0	6,996.3	7,000.0	6,927.2	21.6	17.6	-73.29	-97.9	454.1	346.0	315.7	30.32	11.411	
7,200.0	7,084.0	7,080.6	6,984.7	21.6	17.6	-68.86	-41.6	454.4	355.3	325.1	30.17	11.776	
7,300.0	7,161.0	7,156.8	7,030.5	21.6	17.6	-65.30	19.2	454.6	364.6	334.7	29.84	12.217	
7,400.0	7,224.5	7,231.4	7,066.4	21.6	17.6	-62.52	84.6	454.9	372.9	343.6	29.37	12.697	
7,500.0	7,272.1	7,300.0	7,090.7	21.7	17.7	-60.58	148.7	455.2	379.6	350.7	28.88	13.144	
7,600.0	7,302.1	7,377.6	7,107.9	21.8	17.9	-59.28	224.3	455.5	383.9	355.2	28.66	13.394	
7,700.0	7,313.4	7,450.0	7,113.6	22.0	18.2	-58.81	296.4	455.8	385.6	356.8	28.88	13.355	
7,800.0	7,313.1	7,547.0	7,113.2	22.4	18.8	-58.79	393.4	456.2	385.7	355.6	30.12	12.808	
7,900.0	7,312.8	7,647.0	7,112.8	22.9	19.7	-58.77	493.4	456.6	385.8	354.1	31.70	12.168	
8,000.0	7,312.4	7,747.0	7,112.3	23.6	20.7	-58.76	593.4	457.0	385.9	352.3	33.55	11.500	
8,100.0	7,312.1	7,847.0	7,111.8	24.6	21.9	-58.74	693.4	457.5	385.9	350.3	35.62	10.833	
8,200.0	7,311.7	7,947.0	7,111.4	25.6	23.2	-58.73	793.4	457.9	386.0	348.1	37.88	10.191	
8,300.0	7,311.4	8,047.0	7,110.9	26.8	24.5	-58.71	893.4	458.3	386.1	345.8	40.28	9.583	
8,400.0	7,311.0	8,147.0	7,110.4	28.1	26.0	-58.70	993.4	458.7	386.1	343.3	42.82	9.018	
8,500.0	7,310.7	8,247.0	7,109.9	29.4	27.4	-58.68	1,093.4	459.1	386.2	340.7	45.46	8.496	
8,600.0	7,310.3	8,347.0	7,109.5	30.8	29.0	-58.67	1,193.4	459.5	386.3	338.1	48.19	8.016	
8,700.0	7,310.0	8,447.0	7,109.0	32.3	30.6	-58.65	1,293.4	460.0	386.3	335.3	50.99	7.577	
8,800.0	7,309.6	8,547.0	7,108.5	33.8	32.2	-58.64	1,393.4	460.4	386.4	332.6	53.85	7.175	
8,900.0	7,309.3	8,647.0	7,108.1	35.4	33.8	-58.62	1,493.4	460.8	386.5	329.7	56.77	6.808	
9,000.0	7,308.9	8,747.0	7,107.6	37.0	35.5	-58.61	1,593.4	461.2	386.5	326.8	59.73	6.472	
9,100.0	7,308.6	8,847.0	7,107.1	38.6	37.2	-58.59	1,693.4	461.6	386.6	323.9	62.73	6.163	
9,200.0	7,308.2	8,947.0	7,106.6	40.3	38.9	-58.58	1,793.4	462.1	386.7	320.9	65.76	5.880	
9,300.0	7,307.9	9,047.0	7,106.2	42.0	40.6	-58.56	1,893.4	462.5	386.7	317.9	68.82	5.620	
9,400.0	7,307.5	9,147.0	7,105.7	43.6	42.4	-58.55	1,993.4	462.9	386.8	314.9	71.90	5.380	
9,500.0	7,307.2	9,247.0	7,105.2	45.4	44.2	-58.53	2,093.4	463.3	386.9	311.9	75.01	5.158	
9,600.0	7,306.8	9,347.0	7,104.8	47.1	45.9	-58.52	2,193.4	463.7	386.9	308.8	78.13	4.953	
9,700.0	7,306.5	9,447.0	7,104.3	48.8	47.7	-58.50	2,293.4	464.2	387.0	305.7	81.27	4.762	
9,800.0	7,306.1	9,547.0	7,103.8	50.6	49.5	-58.49	2,393.4	464.6	387.1	302.7	84.43	4.585	
9,900.0	7,305.8	9,647.0	7,103.3	52.4	51.3	-58.47	2,493.4	465.0	387.2	299.6	87.60	4.420	
10,000.0	7,305.4	9,747.0	7,102.9	54.1	53.1	-58.46	2,593.4	465.4	387.2	296.4	90.78	4.266	
10,100.0	7,305.1	9,847.0	7,102.4	55.9	55.0	-58.44	2,693.4	465.8	387.3	293.3	93.97	4.122	
10,200.0	7,304.7	9,947.0	7,101.9	57.7	56.8	-58.43	2,793.4	466.2	387.4	290.2	97.17	3.987	

CC - Min centre to center distance or convergent point, SF - min separation factor, ES - min ellipse separation

Company:	Verdad Oil & Gas Corporation	Local Co-ordinate Reference:	Well Meehl 01N-65W-24-9C
Project:	SEC.24-T1N-R65W	TVD Reference:	WELL @ 5038.5ft (RKB - 16.5')
Reference Site:	Meehl 01N-65W-24 Pad Sec.24-T01N-R65W	MD Reference:	WELL @ 5038.5ft (RKB - 16.5')
Site Error:	0.0ft	North Reference:	True
Reference Well:	Meehl 01N-65W-24-9C	Survey Calculation Method:	Minimum Curvature
Well Error:	0.0ft	Output errors are at	2.00 sigma
Reference Wellbore	Wellbore #1	Database:	landmark
Reference Design:	Plan #1 (10-17-14)	Offset TVD Reference:	Offset Datum

Offset Design Meehl 01N-65W-24 Pad Sec.24-T01N-R65W - Meehl 01N-65W-24-7N - Wellbore #1 - Plan #1 (10-17-1												Offset Site Error:	0.0 ft
Survey Program: 0-MWD												Offset Well Error:	0.0 ft
Reference		Offset		Semi Major Axis			Distance						
Measured Depth (ft)	Vertical Depth (ft)	Measured Depth (ft)	Vertical Depth (ft)	Reference (ft)	Offset (ft)	Highside Toolface (°)	Offset Wellbore Centre +N/-S (ft)	+E/-W (ft)	Between Centres (ft)	Between Ellipses (ft)	Minimum Separation (ft)	Separation Factor	Warning
10,300.0	7,304.4	10,047.0	7,101.5	59.5	58.6	-58.41	2,893.4	466.7	387.4	287.1	100.37	3.860	
10,400.0	7,304.0	10,147.0	7,101.0	61.3	60.4	-58.40	2,993.4	467.1	387.5	283.9	103.59	3.741	
10,500.0	7,303.7	10,247.0	7,100.5	63.1	62.3	-58.38	3,093.4	467.5	387.6	280.8	106.81	3.628	
10,600.0	7,303.3	10,347.0	7,100.0	64.9	64.1	-58.37	3,193.4	467.9	387.6	277.6	110.04	3.523	
10,700.0	7,303.0	10,447.0	7,099.6	66.8	66.0	-58.35	3,293.3	468.3	387.7	274.4	113.27	3.423	
10,800.0	7,302.6	10,547.0	7,099.1	68.6	67.8	-58.34	3,393.3	468.8	387.8	271.3	116.51	3.328	
10,900.0	7,302.3	10,647.0	7,098.6	70.4	69.7	-58.32	3,493.3	469.2	387.8	268.1	119.75	3.239	
11,000.0	7,301.9	10,747.0	7,098.2	72.3	71.5	-58.31	3,593.3	469.6	387.9	264.9	123.00	3.154	
11,100.0	7,301.6	10,847.0	7,097.7	74.1	73.4	-58.29	3,693.3	470.0	388.0	261.7	126.25	3.073	
11,200.0	7,301.2	10,947.0	7,097.2	76.0	75.3	-58.28	3,793.3	470.4	388.0	258.5	129.50	2.997	
11,300.0	7,300.9	11,047.0	7,096.7	77.8	77.1	-58.26	3,893.3	470.9	388.1	255.4	132.75	2.924	
11,400.0	7,300.6	11,147.0	7,096.3	79.7	79.0	-58.25	3,993.3	471.3	388.2	252.2	136.01	2.854	
11,500.0	7,300.2	11,247.0	7,095.8	81.5	80.9	-58.23	4,093.3	471.7	388.3	249.0	139.27	2.788	
11,600.0	7,299.9	11,347.0	7,095.3	83.4	82.7	-58.22	4,193.3	472.1	388.3	245.8	142.53	2.724	
11,700.0	7,299.5	11,447.0	7,094.9	85.2	84.6	-58.20	4,293.3	472.5	388.4	242.6	145.80	2.664	
11,800.0	7,299.2	11,547.0	7,094.4	87.1	86.5	-58.19	4,393.3	472.9	388.5	239.4	149.06	2.606	
11,900.0	7,298.8	11,647.0	7,093.9	89.0	88.4	-58.17	4,493.3	473.4	388.5	236.2	152.33	2.551	
11,987.4	7,298.5	11,734.4	7,093.5	90.6	90.0	-58.16	4,580.7	473.7	388.6	233.4	155.19	2.504 SF	

Company:	Verdad Oil & Gas Corporation	Local Co-ordinate Reference:	Well Meehl 01N-65W-24-9C
Project:	SEC.24-T1N-R65W	TVD Reference:	WELL @ 5038.5ft (RKB - 16.5')
Reference Site:	Meehl 01N-65W-24 Pad Sec.24-T01N-R65W	MD Reference:	WELL @ 5038.5ft (RKB - 16.5')
Site Error:	0.0ft	North Reference:	True
Reference Well:	Meehl 01N-65W-24-9C	Survey Calculation Method:	Minimum Curvature
Well Error:	0.0ft	Output errors are at	2.00 sigma
Reference Wellbore	Wellbore #1	Database:	landmark
Reference Design:	Plan #1 (10-17-14)	Offset TVD Reference:	Offset Datum

Offset Design												Offset Site Error:	0.0 ft
Survey Program: 0-MWD												Offset Well Error:	0.0 ft
Reference		Offset		Semi Major Axis			Distance						
Measured Depth (ft)	Vertical Depth (ft)	Measured Depth (ft)	Vertical Depth (ft)	Reference (ft)	Offset (ft)	Highside Toolface (°)	Offset Wellbore Centre +N/-S (ft)	+E/-W (ft)	Between Centres (ft)	Between Ellipses (ft)	Minimum Separation (ft)	Separation Factor	Warning
0.0	0.0	0.0	0.0	0.0	0.0	-89.95	0.0	-15.1	15.1	15.1	0.00	N/A	
100.0	100.0	100.0	100.0	0.1	0.1	-89.95	0.0	-15.1	15.1	14.9	0.22	67.280	
200.0	200.0	200.0	200.0	0.3	0.3	-89.95	0.0	-15.1	15.1	14.4	0.67	22.427 CC, ES	
300.0	300.0	300.0	300.0	0.5	0.6	166.02	0.0	-15.1	16.8	15.7	1.12	15.059	
400.0	399.8	399.8	399.8	0.8	0.8	169.31	0.0	-15.1	21.9	20.4	1.56	14.044	
500.0	499.5	499.5	499.5	1.0	1.0	172.32	0.0	-15.1	30.5	28.5	2.01	15.159	
600.0	598.7	598.7	598.7	1.3	1.2	174.48	0.0	-15.1	42.6	40.2	2.47	17.256	
700.0	697.5	699.4	699.4	1.6	1.4	175.74	-0.6	-13.5	56.6	53.6	2.91	19.442	
800.0	795.6	800.7	800.5	2.0	1.6	176.32	-2.3	-8.5	70.5	67.1	3.33	21.132	
900.0	893.1	902.4	901.9	2.5	1.9	176.55	-5.2	0.0	84.4	80.6	3.78	22.330	
1,000.0	989.8	1,004.8	1,003.4	3.0	2.1	176.58	-9.3	11.9	97.7	93.5	4.24	23.026	
1,100.0	1,086.4	1,107.9	1,105.3	3.5	2.4	176.39	-14.7	27.3	107.9	103.2	4.74	22.780	
1,200.0	1,183.0	1,211.7	1,207.1	4.0	2.8	176.00	-21.2	46.4	114.5	109.3	5.25	21.811	
1,300.0	1,279.6	1,311.7	1,304.7	4.6	3.2	175.54	-28.2	66.4	119.3	113.5	5.78	20.647	
1,400.0	1,376.2	1,411.5	1,402.3	5.1	3.6	175.12	-35.1	86.5	124.1	117.8	6.32	19.648	
1,500.0	1,472.9	1,511.4	1,499.9	5.7	4.0	174.73	-42.1	106.5	128.9	122.1	6.86	18.782	
1,600.0	1,569.5	1,611.3	1,597.5	6.2	4.5	174.37	-49.0	126.6	133.7	126.3	7.41	18.036	
1,700.0	1,666.1	1,711.2	1,695.1	6.8	4.9	174.04	-55.9	146.6	138.5	130.6	7.97	17.376	
1,800.0	1,762.7	1,811.1	1,792.7	7.3	5.3	173.72	-62.8	166.7	143.4	134.8	8.54	16.794	
1,900.0	1,859.3	1,910.9	1,890.3	7.9	5.8	173.43	-69.8	186.7	148.2	139.1	9.10	16.277	
2,000.0	1,956.0	2,010.8	1,988.0	8.4	6.2	173.16	-76.7	206.8	153.0	143.3	9.68	15.814	
2,100.0	2,052.6	2,110.7	2,085.6	9.0	6.7	172.90	-83.6	226.9	157.8	147.6	10.25	15.399	
2,200.0	2,149.2	2,210.6	2,183.2	9.5	7.2	172.65	-90.6	246.9	162.7	151.8	10.83	15.024	
2,300.0	2,245.8	2,310.5	2,280.8	10.1	7.6	172.43	-97.5	267.0	167.5	156.1	11.41	14.684	
2,400.0	2,342.4	2,410.3	2,378.4	10.6	8.1	172.21	-104.4	287.0	172.3	160.3	11.99	14.373	
2,500.0	2,439.1	2,510.2	2,476.0	11.2	8.5	172.01	-111.4	307.1	177.2	164.6	12.57	14.090	
2,600.0	2,535.7	2,610.1	2,573.6	11.8	9.0	171.81	-118.3	327.1	182.0	168.9	13.16	13.830	
2,700.0	2,632.3	2,710.0	2,671.2	12.3	9.5	171.63	-125.2	347.2	186.9	173.1	13.75	13.590	
2,800.0	2,728.9	2,809.9	2,768.8	12.9	9.9	171.46	-132.2	367.2	191.7	177.4	14.34	13.369	
2,900.0	2,825.5	2,909.8	2,866.4	13.4	10.4	171.29	-139.1	387.3	196.5	181.6	14.93	13.163	
3,000.0	2,922.2	3,009.6	2,964.0	14.0	10.9	171.13	-146.0	407.3	201.4	185.9	15.52	12.973	
3,100.0	3,018.8	3,109.5	3,061.6	14.5	11.3	170.98	-153.0	427.4	206.2	190.1	16.12	12.795	
3,200.0	3,115.4	3,209.4	3,159.2	15.1	11.8	170.84	-159.9	447.4	211.1	194.4	16.71	12.630	
3,300.0	3,212.0	3,309.3	3,256.8	15.6	12.3	170.70	-166.8	467.5	215.9	198.6	17.31	12.475	
3,400.0	3,308.7	3,409.2	3,354.4	16.2	12.7	170.56	-173.8	487.5	220.4	202.5	17.91	12.307	
3,500.0	3,406.2	3,509.2	3,452.1	16.5	13.2	170.29	-180.7	507.6	221.8	203.4	18.47	12.011	
3,600.0	3,504.4	3,609.1	3,549.8	16.9	13.7	169.86	-187.7	527.7	219.9	200.8	19.02	11.559	
3,700.0	3,603.1	3,708.9	3,647.3	17.2	14.1	169.23	-194.6	547.7	214.5	194.9	19.57	10.961	
3,800.0	3,702.4	3,805.0	3,741.2	17.4	14.5	168.44	-201.1	566.6	206.2	186.1	20.08	10.267	
3,900.0	3,802.0	3,900.0	3,834.7	17.6	14.8	167.59	-206.7	582.6	197.3	176.8	20.52	9.614	
4,000.0	3,901.9	3,991.7	3,925.4	17.7	15.1	166.73	-211.1	595.3	188.2	167.3	20.92	8.996	
4,100.0	4,001.8	4,085.5	4,018.6	17.8	15.3	-88.57	-214.6	605.5	178.9	157.5	21.34	8.382	
4,200.0	4,101.8	4,179.7	4,112.5	18.0	15.5	-89.36	-217.1	612.8	171.1	149.3	21.79	7.851	
4,300.0	4,201.8	4,274.3	4,207.0	18.1	15.7	-89.86	-218.6	617.1	166.4	144.2	22.19	7.501	
4,400.0	4,301.8	4,369.2	4,301.8	18.2	15.8	-90.03	-219.1	618.6	164.9	142.4	22.53	7.320	
4,500.0	4,401.8	4,469.2	4,401.8	18.3	15.9	-90.03	-219.1	618.6	164.9	142.1	22.85	7.216	
4,600.0	4,501.8	4,569.2	4,501.8	18.4	16.0	-90.03	-219.1	618.6	164.9	141.7	23.18	7.114	
4,700.0	4,601.8	4,669.2	4,601.8	18.5	16.1	-90.03	-219.1	618.6	164.9	141.4	23.52	7.013	
4,800.0	4,701.8	4,769.2	4,701.8	18.6	16.3	-90.03	-219.1	618.6	164.9	141.1	23.85	6.915	
4,900.0	4,801.8	4,869.2	4,801.8	18.7	16.4	-90.03	-219.1	618.6	164.9	140.7	24.19	6.817	
5,000.0	4,901.8	4,969.2	4,901.8	18.8	16.5	-90.03	-219.1	618.6	164.9	140.4	24.53	6.722	
5,100.0	5,001.8	5,069.2	5,001.8	19.0	16.7	-90.03	-219.1	618.6	164.9	140.0	24.88	6.628	

CC - Min centre to center distance or convergent point, SF - min separation factor, ES - min ellipse separation

Company:	Verdad Oil & Gas Corporation	Local Co-ordinate Reference:	Well Meehl 01N-65W-24-9C
Project:	SEC.24-T1N-R65W	TVD Reference:	WELL @ 5038.5ft (RKB - 16.5')
Reference Site:	Meehl 01N-65W-24 Pad Sec.24-T01N-R65W	MD Reference:	WELL @ 5038.5ft (RKB - 16.5')
Site Error:	0.0ft	North Reference:	True
Reference Well:	Meehl 01N-65W-24-9C	Survey Calculation Method:	Minimum Curvature
Well Error:	0.0ft	Output errors are at	2.00 sigma
Reference Wellbore	Wellbore #1	Database:	landmark
Reference Design:	Plan #1 (10-17-14)	Offset TVD Reference:	Offset Datum

Offset Design													Offset Site Error:	0.0 ft
Survey Program: 0-MWD													Offset Well Error:	0.0 ft
Reference		Offset		Semi Major Axis			Distance							Warning
Measured Depth (ft)	Vertical Depth (ft)	Measured Depth (ft)	Vertical Depth (ft)	Reference (ft)	Offset (ft)	Highside Toolface (°)	Offset Wellbore Centre +N/-S (ft)	+E/-W (ft)	Between Centres (ft)	Between Ellipses (ft)	Minimum Separation (ft)	Separation Factor		
5,200.0	5,101.8	5,169.2	5,101.8	19.1	16.8	-90.03	-219.1	618.6	164.9	139.7	25.23	6.536		
5,300.0	5,201.8	5,269.2	5,201.8	19.2	17.0	-90.03	-219.1	618.6	164.9	139.3	25.58	6.446		
5,400.0	5,301.8	5,369.2	5,301.8	19.3	17.1	-90.03	-219.1	618.6	164.9	139.0	25.94	6.358		
5,500.0	5,401.8	5,469.2	5,401.8	19.5	17.2	-90.03	-219.1	618.6	164.9	138.6	26.30	6.271		
5,600.0	5,501.8	5,569.2	5,501.8	19.6	17.4	-90.03	-219.1	618.6	164.9	138.3	26.66	6.186		
5,700.0	5,601.8	5,669.2	5,601.8	19.7	17.5	-90.03	-219.1	618.6	164.9	137.9	27.03	6.102		
5,800.0	5,701.8	5,769.2	5,701.8	19.8	17.7	-90.03	-219.1	618.6	164.9	137.5	27.39	6.021		
5,900.0	5,801.8	5,869.2	5,801.8	20.0	17.8	-90.03	-219.1	618.6	164.9	137.2	27.76	5.941		
6,000.0	5,901.8	5,969.2	5,901.8	20.1	18.0	-90.03	-219.1	618.6	164.9	136.8	28.13	5.862		
6,100.0	6,001.8	6,069.2	6,001.8	20.3	18.1	-90.03	-219.1	618.6	164.9	136.4	28.51	5.785		
6,200.0	6,101.8	6,169.2	6,101.8	20.4	18.3	-90.03	-219.1	618.6	164.9	136.0	28.88	5.710		
6,300.0	6,201.8	6,269.2	6,201.8	20.5	18.4	-90.03	-219.1	618.6	164.9	135.7	29.26	5.636		
6,400.0	6,301.8	6,369.2	6,301.8	20.7	18.6	-90.03	-219.1	618.6	164.9	135.3	29.64	5.564		
6,500.0	6,401.8	6,469.2	6,401.8	20.8	18.8	-90.03	-219.1	618.6	164.9	134.9	30.02	5.493		
6,600.0	6,501.8	6,569.2	6,501.8	21.0	18.9	-90.03	-219.1	618.6	164.9	134.5	30.41	5.424		
6,700.0	6,601.8	6,669.2	6,601.9	21.1	19.1	-90.00	-219.0	618.6	164.9	134.1	30.79	5.357		
6,726.3	6,628.2	6,695.5	6,628.1	21.1	19.1	-89.61	-217.9	618.6	164.9	134.1	30.84	5.348		
6,800.0	6,701.8	6,767.8	6,699.7	21.3	19.2	-86.18	-208.0	618.6	165.3	134.5	30.71	5.381		
6,900.0	6,801.8	6,859.2	6,787.1	21.4	19.3	-77.36	-181.5	618.7	169.6	139.2	30.43	5.573		
7,000.0	6,901.0	6,943.9	6,862.7	21.5	19.3	-67.06	-143.7	618.9	180.7	150.1	30.59	5.908		
7,100.0	6,996.3	7,025.0	6,928.5	21.6	19.3	-58.65	-96.5	619.1	195.6	164.8	30.80	6.350		
7,200.0	7,084.0	7,100.0	6,982.2	21.6	19.3	-52.31	-44.1	619.3	211.6	181.2	30.38	6.967		
7,300.0	7,161.0	7,179.4	7,030.2	21.6	19.3	-47.28	19.0	619.6	226.9	197.7	29.19	7.772		
7,400.0	7,224.5	7,250.0	7,064.4	21.6	19.3	-43.89	80.7	619.8	240.0	212.7	27.31	8.788		
7,500.0	7,272.1	7,327.4	7,091.9	21.7	19.4	-41.44	152.9	620.2	250.1	224.8	25.26	9.899		
7,600.0	7,302.1	7,400.0	7,107.8	21.8	19.5	-40.06	223.8	620.5	256.5	232.9	23.60	10.871		
7,700.0	7,313.4	7,472.4	7,113.6	22.0	19.8	-39.55	295.9	620.8	259.0	236.1	22.91	11.309		
7,800.0	7,313.1	7,569.3	7,113.2	22.4	20.2	-39.53	392.7	621.2	259.1	235.3	23.80	10.888		
7,900.0	7,312.8	7,669.3	7,112.8	22.9	20.9	-39.51	492.7	621.6	259.2	234.2	25.02	10.360		
8,000.0	7,312.4	7,769.3	7,112.3	23.6	21.8	-39.49	592.7	622.0	259.3	232.9	26.46	9.800		
8,100.0	7,312.1	7,869.3	7,111.8	24.6	22.9	-39.47	692.7	622.4	259.4	231.3	28.08	9.238		
8,200.0	7,311.7	7,969.3	7,111.4	25.6	24.1	-39.46	792.7	622.9	259.5	229.7	29.85	8.693		
8,300.0	7,311.4	8,069.3	7,110.9	26.8	25.4	-39.44	892.7	623.3	259.6	227.9	31.75	8.176		
8,400.0	7,311.0	8,169.3	7,110.4	28.1	26.8	-39.42	992.7	623.7	259.7	225.9	33.76	7.693		
8,500.0	7,310.7	8,269.3	7,109.9	29.4	28.2	-39.41	1,092.7	624.1	259.8	223.9	35.85	7.248		
8,600.0	7,310.3	8,369.3	7,109.5	30.8	29.7	-39.39	1,192.7	624.6	259.9	221.9	38.01	6.838		
8,700.0	7,310.0	8,469.3	7,109.0	32.3	31.2	-39.37	1,292.7	625.0	260.0	219.8	40.23	6.462		
8,800.0	7,309.6	8,569.3	7,108.5	33.8	32.8	-39.35	1,392.7	625.4	260.1	217.6	42.50	6.119		
8,900.0	7,309.3	8,669.3	7,108.1	35.4	34.4	-39.34	1,492.7	625.8	260.2	215.4	44.82	5.805		
9,000.0	7,308.9	8,769.3	7,107.6	37.0	36.1	-39.32	1,592.7	626.3	260.3	213.1	47.17	5.518		
9,100.0	7,308.6	8,869.3	7,107.1	38.6	37.7	-39.30	1,692.7	626.7	260.4	210.8	49.55	5.254		
9,200.0	7,308.2	8,969.3	7,106.6	40.3	39.4	-39.29	1,792.7	627.1	260.5	208.5	51.96	5.013		
9,300.0	7,307.9	9,069.3	7,106.2	42.0	41.2	-39.27	1,892.7	627.5	260.6	206.2	54.39	4.790		
9,400.0	7,307.5	9,169.3	7,105.7	43.6	42.9	-39.25	1,992.7	628.0	260.6	203.8	56.84	4.586		
9,500.0	7,307.2	9,269.3	7,105.2	45.4	44.6	-39.23	2,092.7	628.4	260.7	201.4	59.31	4.396		
9,600.0	7,306.8	9,369.3	7,104.8	47.1	46.4	-39.22	2,192.7	628.8	260.8	199.0	61.79	4.221		
9,700.0	7,306.5	9,469.3	7,104.3	48.8	48.1	-39.20	2,292.7	629.2	260.9	196.6	64.28	4.059		
9,800.0	7,306.1	9,569.3	7,103.8	50.6	49.9	-39.18	2,392.7	629.7	261.0	194.2	66.79	3.908		
9,900.0	7,305.8	9,669.3	7,103.3	52.4	51.7	-39.17	2,492.7	630.1	261.1	191.8	69.31	3.768		
10,000.0	7,305.4	9,769.3	7,102.9	54.1	53.5	-39.15	2,592.7	630.5	261.2	189.4	71.83	3.637		
10,100.0	7,305.1	9,869.3	7,102.4	55.9	55.3	-39.13	2,692.7	630.9	261.3	186.9	74.36	3.514		
10,200.0	7,304.7	9,969.3	7,101.9	57.7	57.1	-39.12	2,792.7	631.3	261.4	184.5	76.90	3.399		

CC - Min centre to center distance or convergent point, SF - min separation factor, ES - min ellipse separation

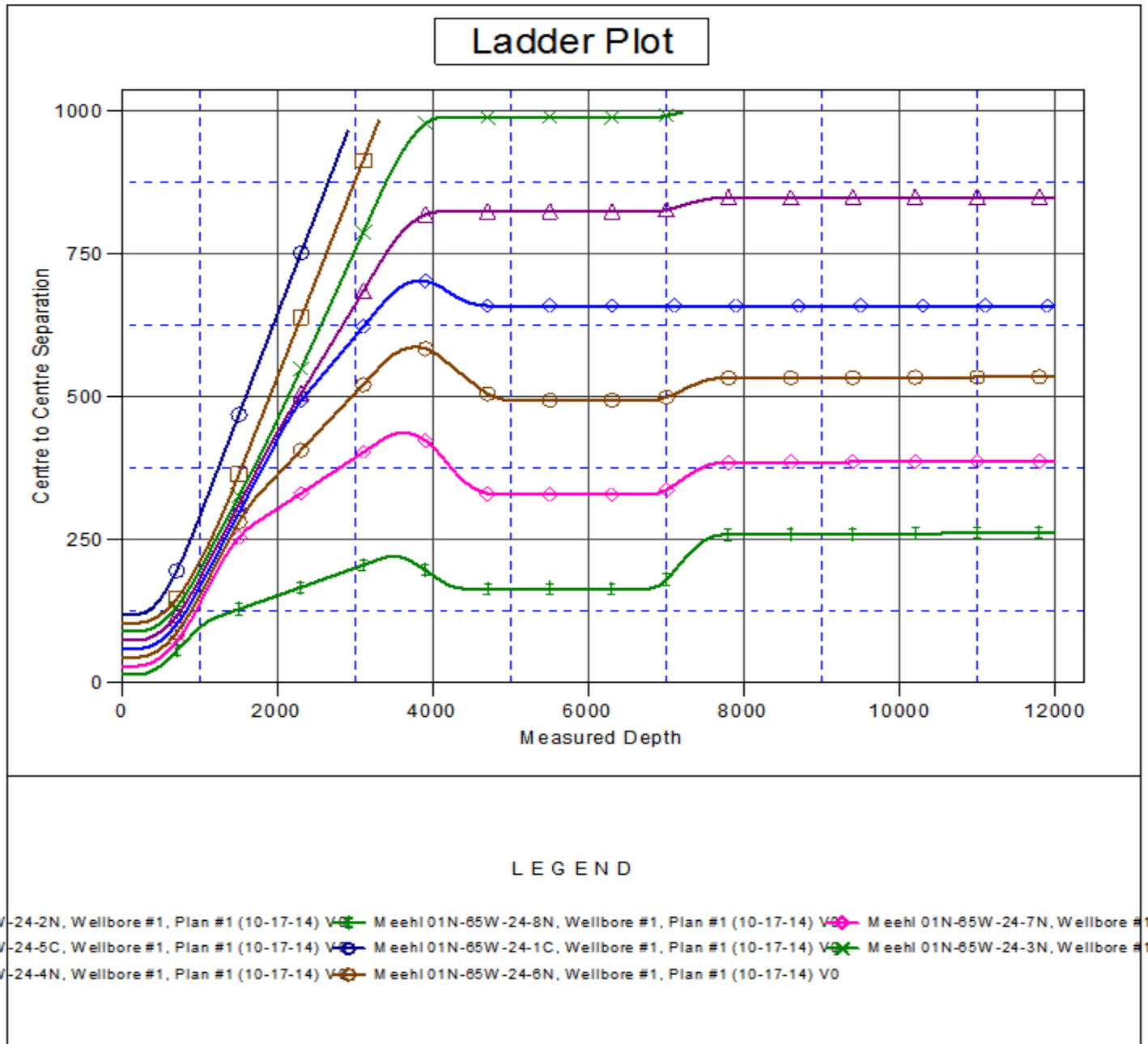
Company:	Verdad Oil & Gas Corporation	Local Co-ordinate Reference:	Well Meehl 01N-65W-24-9C
Project:	SEC.24-T1N-R65W	TVD Reference:	WELL @ 5038.5ft (RKB - 16.5')
Reference Site:	Meehl 01N-65W-24 Pad Sec.24-T01N-R65W	MD Reference:	WELL @ 5038.5ft (RKB - 16.5')
Site Error:	0.0ft	North Reference:	True
Reference Well:	Meehl 01N-65W-24-9C	Survey Calculation Method:	Minimum Curvature
Well Error:	0.0ft	Output errors are at	2.00 sigma
Reference Wellbore	Wellbore #1	Database:	landmark
Reference Design:	Plan #1 (10-17-14)	Offset TVD Reference:	Offset Datum

Offset Design Meehl 01N-65W-24 Pad Sec.24-T01N-R65W - Meehl 01N-65W-24-8N - Wellbore #1 - Plan #1 (10-17-1												Offset Site Error:	0.0 ft
Survey Program: 0-MWD												Offset Well Error:	0.0 ft
Reference		Offset		Semi Major Axis			Distance						
Measured Depth (ft)	Vertical Depth (ft)	Measured Depth (ft)	Vertical Depth (ft)	Reference (ft)	Offset (ft)	Highside Toolface (°)	Offset Wellbore Centre +N/-S (ft)	+E/-W (ft)	Between Centres (ft)	Between Ellipses (ft)	Minimum Separation (ft)	Separation Factor	Warning
10,300.0	7,304.4	10,069.3	7,101.5	59.5	59.0	-39.10	2,892.7	631.8	261.5	182.1	79.45	3.291	
10,400.0	7,304.0	10,169.3	7,101.0	61.3	60.8	-39.08	2,992.7	632.2	261.6	179.6	82.00	3.190	
10,500.0	7,303.7	10,269.3	7,100.5	63.1	62.6	-39.07	3,092.7	632.6	261.7	177.1	84.55	3.095	
10,600.0	7,303.3	10,369.3	7,100.0	64.9	64.4	-39.05	3,192.7	633.0	261.8	174.7	87.11	3.005	
10,700.0	7,303.0	10,469.3	7,099.6	66.8	66.3	-39.03	3,292.7	633.5	261.9	172.2	89.67	2.920	
10,800.0	7,302.6	10,569.3	7,099.1	68.6	68.1	-39.02	3,392.7	633.9	262.0	169.7	92.24	2.840	
10,900.0	7,302.3	10,669.3	7,098.6	70.4	70.0	-39.00	3,492.7	634.3	262.1	167.3	94.81	2.764	
11,000.0	7,301.9	10,769.3	7,098.2	72.3	71.8	-38.98	3,592.7	634.7	262.2	164.8	97.38	2.692	
11,100.0	7,301.6	10,869.3	7,097.7	74.1	73.7	-38.96	3,692.7	635.2	262.3	162.3	99.95	2.624	
11,200.0	7,301.2	10,969.3	7,097.2	76.0	75.5	-38.95	3,792.7	635.6	262.4	159.8	102.53	2.559	
11,300.0	7,300.9	11,069.3	7,096.7	77.8	77.4	-38.93	3,892.7	636.0	262.4	157.3	105.11	2.497	
11,400.0	7,300.6	11,169.3	7,096.3	79.7	79.2	-38.91	3,992.7	636.4	262.5	154.9	107.69	2.438	
11,500.0	7,300.2	11,269.3	7,095.8	81.5	81.1	-38.90	4,092.6	636.9	262.6	152.4	110.27	2.382	
11,600.0	7,299.9	11,369.3	7,095.3	83.4	83.0	-38.88	4,192.6	637.3	262.7	149.9	112.85	2.328	
11,700.0	7,299.5	11,469.3	7,094.9	85.2	84.8	-38.86	4,292.6	637.7	262.8	147.4	115.43	2.277	
11,800.0	7,299.2	11,569.3	7,094.4	87.1	86.7	-38.85	4,392.6	638.1	262.9	144.9	118.01	2.228	
11,900.0	7,298.8	11,669.3	7,093.9	89.0	88.6	-38.83	4,492.6	638.6	263.0	142.4	120.60	2.181	
11,987.4	7,298.5	11,756.6	7,093.5	90.6	90.2	-38.82	4,580.0	638.9	263.1	140.2	122.86	2.142 SF	

Company:	Verdad Oil & Gas Corporation	Local Co-ordinate Reference:	Well Meehl 01N-65W-24-9C
Project:	SEC.24-T1N-R65W	TVD Reference:	WELL @ 5038.5ft (RKB - 16.5')
Reference Site:	Meehl 01N-65W-24 Pad Sec.24-T01N-R65W	MD Reference:	WELL @ 5038.5ft (RKB - 16.5')
Site Error:	0.0ft	North Reference:	True
Reference Well:	Meehl 01N-65W-24-9C	Survey Calculation Method:	Minimum Curvature
Well Error:	0.0ft	Output errors are at	2.00 sigma
Reference Wellbore	Wellbore #1	Database:	landmark
Reference Design:	Plan #1 (10-17-14)	Offset TVD Reference:	Offset Datum

Reference Depths are relative to WELL @ 5038.5ft (RKB - 16.5')
 Offset Depths are relative to Offset Datum
 Central Meridian is -105.500000 °

Coordinates are relative to: Meehl 01N-65W-24-9C
 Coordinate System is US State Plane 1983, Colorado Northern Zone
 Grid Convergence at Surface is: 0.58°



Company: Verdad Oil & Gas Corporation
Project: SEC.24-T1N-R65W
Reference Site: Meehl 01N-65W-24 Pad Sec.24-T01N-R65W
Site Error: 0.0ft
Reference Well: Meehl 01N-65W-24-9C
Well Error: 0.0ft
Reference Wellbore: Wellbore #1
Reference Design: Plan #1 (10-17-14)

Local Co-ordinate Reference: Well Meehl 01N-65W-24-9C
TVD Reference: WELL @ 5038.5ft (RKB - 16.5')
MD Reference: WELL @ 5038.5ft (RKB - 16.5')
North Reference: True
Survey Calculation Method: Minimum Curvature
Output errors are at 2.00 sigma
Database: landmark
Offset TVD Reference: Offset Datum

Reference Depths are relative to WELL @ 5038.5ft (RKB - 16.5')

Offset Depths are relative to Offset Datum

Central Meridian is -105.500000 °

Coordinates are relative to: Meehl 01N-65W-24-9C

Coordinate System is US State Plane 1983, Colorado Northern Zone

Grid Convergence at Surface is: 0.58°

