

Verdad Oil & Gas Corporation

Well Name: **Meehl 01N-65W-24-7N**

Surface Location: Meehl 01N-65W-24 Pad Sec.24-T01N-R65W

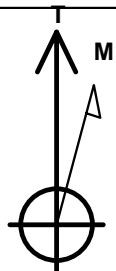
North American Datum 1983 , US State Plane 1983 , Colorado Northern Zone

Ground Elevation: 5022.0

+N/-S	+E/-W	Northing	Easting	Latitude	Longitude	Slot
0.0	0.0	1255137.43	3249754.35	40.030292	-104.608098	
		RKB - 16.5'	WELL @ 5038.5ft (RKB - 16.5')			

WELLBORE TARGET DETAILS

Name	TVD	+N/-S	+E/-W	Shape
460' Setback BHL	1.0	4585.4	-790.2	Polygon
460' Setback SHL	1.0	189.7	-790.2	Polygon
Sectionline	1.0	-270.3	-790.2	Polygon
SHL 270'FSL & 1473'FEL	1.0	0.0	0.0	Point
BHL 460'FNL & 990'FEL	7093.5	4581.7	503.7	Point



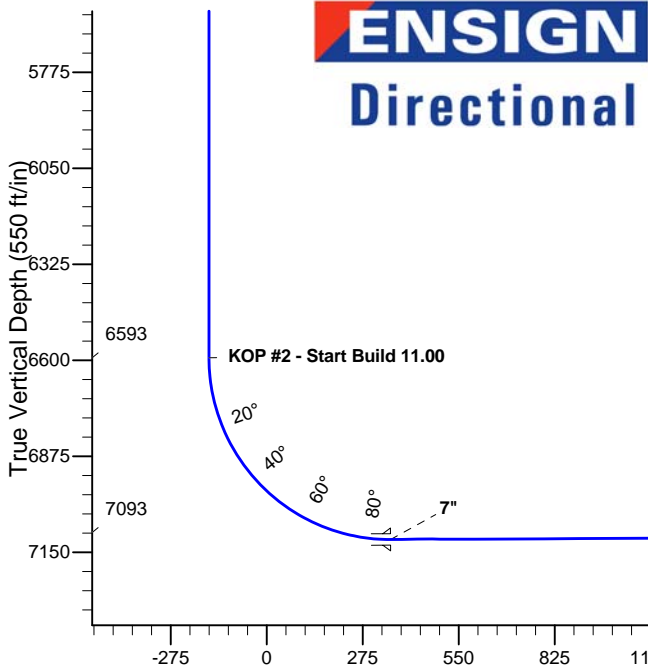
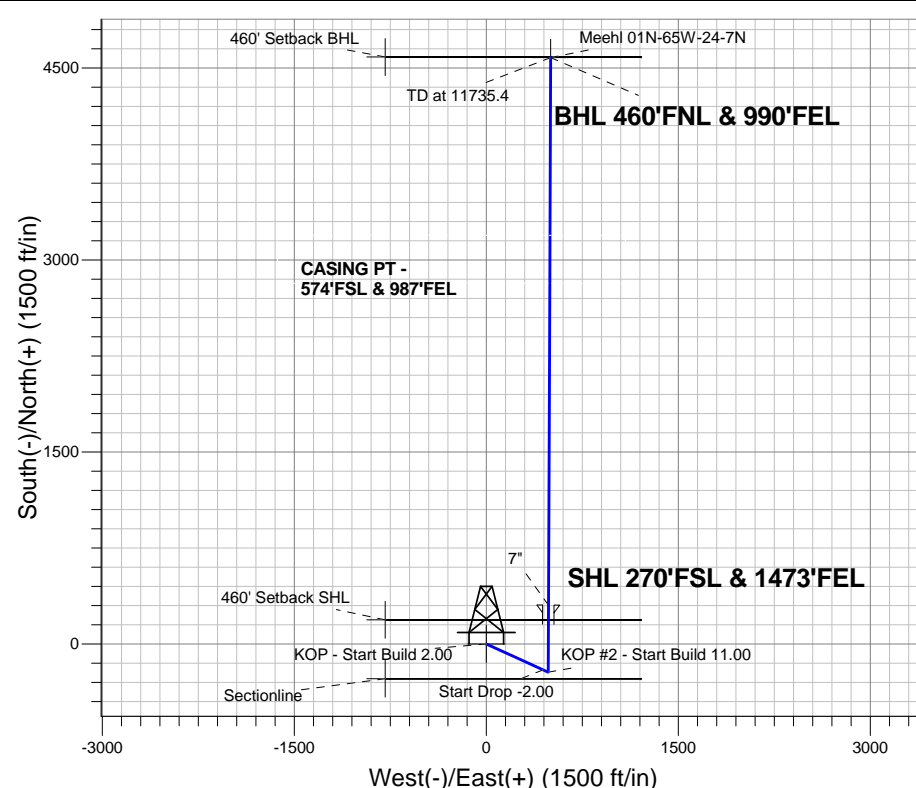
Azimuths to True North
Magnetic North: 8.30°

Magnetic Field
Strength: 52600.0nT
Dip Angle: 66.66°
Date: 10/17/2014
Model: IGRF2010

Meehl 01N-65W-24 Pad Sec.24-T01N-R65W
Meehl 01N-65W-24-7N
Plan #1 (10-17-14)

ANNOTATIONS

TVD	MD	Annotation
1200.0	1200.0	KOP - Start Build 2.00
4200.0	4241.6	Start Drop -2.00
6592.8	6636.9	KOP #2 - Start Build 11.00
7093.5	11735.4	TD at 11735.4



SECTION DETAILS

Sec	MD	Inc	Azi	TVD	+N/-S	+E/-W	DLeg	TFace	VSoc	Target
1	0.0	0.00	0.00	0.0	0.0	0.0	0.00	0.00	0.0	
2	1200.0	0.00	0.00	1200.0	0.0	0.0	0.00	0.00	0.0	
3	1702.5	10.05	114.40	1700.0	-18.2	40.0	2.00	114.40	-13.7	
4	4241.6	10.05	114.40	4200.0	-201.2	443.6	0.00	0.00	-151.6	
5	4744.1	0.00	0.00	4700.0	-219.4	483.6	2.00	180.00	-165.2	
6	6636.9	0.00	0.00	6592.8	-219.4	483.6	0.00	0.00	-165.2	
7	7457.5	90.27	0.24	7113.7	303.9	485.8	11.00	0.24	355.2	
8	11735.4	90.27	0.24	7093.5	4581.7	503.7	0.00	0.00	4609.3	BHL 460'FNL & 990'FEL

BHL 460'FNL & 990'FEL

TD at 11735.4

Vertical Section at 6.27° (550 ft/in)



Verdad Oil & Gas Corporation

SEC.24-T1N-R65W

Meehl 01N-65W-24 Pad Sec.24-T01N-R65W

Meehl 01N-65W-24-7N

Wellbore #1

Plan: Plan #1 (10-17-14)

Standard Planning Report

20 October, 2014

Database:	landmark	Local Co-ordinate Reference:	Well Meehl 01N-65W-24-7N
Company:	Verdad Oil & Gas Corporation	TVD Reference:	WELL @ 5038.5ft (RKB - 16.5')
Project:	SEC.24-T1N-R65W	MD Reference:	WELL @ 5038.5ft (RKB - 16.5')
Site:	Meehl 01N-65W-24 Pad Sec.24-T01N-R65W	North Reference:	True
Well:	Meehl 01N-65W-24-7N	Survey Calculation Method:	Minimum Curvature
Wellbore:	Wellbore #1		
Design:	Plan #1 (10-17-14)		

Project	SEC.24-T1N-R65W		
Map System:	US State Plane 1983	System Datum:	Mean Sea Level
Geo Datum:	North American Datum 1983		Using Well Reference Point
Map Zone:	Colorado Northern Zone		Using geodetic scale factor

Site						Meehl 01N-65W-24 Pad Sec.24-T01N-R65W											
Site Position:						Northing:			1,255,136.20ft			Latitude:			40.030291		
From:			Lat/Long			Easting:			3,249,664.19ft			Longitude:			-104.608420		
Position Uncertainty:			0.0 ft			Slot Radius:			"			Grid Convergence:			0.58 °		

Well	Meehl 01N-65W-24-7N					
Well Position	+N/-S	0.3 ft	Northing:	1,255,137.43 ft	Latitude:	40.030292
	+E/-W	90.2 ft	Easting:	3,249,754.35 ft	Longitude:	-104.608098
Position Uncertainty		0.0 ft	Wellhead Elevation:	ft	Ground Level:	5,022.0 ft

Wellbore	Wellbore #1				
Magnetics	Model Name	Sample Date	Declination (°)	Dip Angle (°)	Field Strength (nT)
	IGRF2010	10/17/2014	8.30	66.66	52,600

Design	Plan #1 (10-17-14)			
Audit Notes:				
Version:	Phase:	PROTOTYPE	Tie On Depth:	0.0
Vertical Section:	Depth From (TVD) (ft)	+N/-S (ft)	+E/-W (ft)	Direction (°)
	0.0	0.0	0.0	6.27

Plan Sections										
Measured Depth (ft)	Inclination (°)	Azimuth (°)	Vertical Depth (ft)	+N/-S (ft)	+E/-W (ft)	Dogleg Rate (°/100ft)	Build Rate (°/100ft)	Turn Rate (°/100ft)	TFO (°)	Target
0.0	0.00	0.00	0.0	0.0	0.0	0.00	0.00	0.00	0.00	
1,200.0	0.00	0.00	1,200.0	0.0	0.0	0.00	0.00	0.00	0.00	
1,702.5	10.05	114.40	1,700.0	-18.2	40.0	2.00	2.00	0.00	114.40	
4,241.6	10.05	114.40	4,200.0	-201.2	443.6	0.00	0.00	0.00	0.00	
4,744.1	0.00	0.00	4,700.0	-219.4	483.6	2.00	-2.00	0.00	180.00	
6,636.9	0.00	0.00	6,592.8	-219.4	483.6	0.00	0.00	0.00	0.00	
7,457.5	90.27	0.24	7,113.7	303.9	485.8	11.00	11.00	0.00	0.24	
11,735.4	90.27	0.24	7,093.5	4,581.7	503.7	0.00	0.00	0.00	0.00	BHL 460'FNL & 99C

Database: landmark
Company: Verdad Oil & Gas Corporation
Project: SEC.24-T1N-R65W
Site: Meehl 01N-65W-24 Pad Sec.24-T01N-R65W
Well: Meehl 01N-65W-24-7N
Wellbore: Wellbore #1
Design: Plan #1 (10-17-14)

Local Co-ordinate Reference: Well Meehl 01N-65W-24-7N
TVD Reference: WELL @ 5038.5ft (RKB - 16.5')
MD Reference: WELL @ 5038.5ft (RKB - 16.5')
North Reference: True
Survey Calculation Method: Minimum Curvature

Planned Survey									
Measured Depth (ft)	Inclination (°)	Azimuth (°)	Vertical Depth (ft)	+N/-S (ft)	+E/-W (ft)	Vertical Section (ft)	Dogleg Rate (°/100ft)	Build Rate (°/100ft)	Turn Rate (°/100ft)
0.0	0.00	0.00	0.0	0.0	0.0	0.0	0.00	0.00	0.00
100.0	0.00	0.00	100.0	0.0	0.0	0.0	0.00	0.00	0.00
200.0	0.00	0.00	200.0	0.0	0.0	0.0	0.00	0.00	0.00
300.0	0.00	0.00	300.0	0.0	0.0	0.0	0.00	0.00	0.00
400.0	0.00	0.00	400.0	0.0	0.0	0.0	0.00	0.00	0.00
500.0	0.00	0.00	500.0	0.0	0.0	0.0	0.00	0.00	0.00
600.0	0.00	0.00	600.0	0.0	0.0	0.0	0.00	0.00	0.00
700.0	0.00	0.00	700.0	0.0	0.0	0.0	0.00	0.00	0.00
800.0	0.00	0.00	800.0	0.0	0.0	0.0	0.00	0.00	0.00
900.0	0.00	0.00	900.0	0.0	0.0	0.0	0.00	0.00	0.00
1,000.0	0.00	0.00	1,000.0	0.0	0.0	0.0	0.00	0.00	0.00
1,100.0	0.00	0.00	1,100.0	0.0	0.0	0.0	0.00	0.00	0.00
1,200.0	0.00	0.00	1,200.0	0.0	0.0	0.0	0.00	0.00	0.00
KOP - Start Build 2.00									
1,300.0	2.00	114.40	1,300.0	-0.7	1.6	-0.5	2.00	2.00	0.00
1,400.0	4.00	114.40	1,399.8	-2.9	6.4	-2.2	2.00	2.00	0.00
1,500.0	6.00	114.40	1,499.5	-6.5	14.3	-4.9	2.00	2.00	0.00
1,600.0	8.00	114.40	1,598.7	-11.5	25.4	-8.7	2.00	2.00	0.00
1,700.0	10.00	114.40	1,697.5	-18.0	39.6	-13.5	2.00	2.00	0.00
1,702.5	10.05	114.40	1,700.0	-18.2	40.0	-13.7	2.00	2.00	0.00
1,800.0	10.05	114.40	1,795.9	-25.2	55.5	-19.0	0.00	0.00	0.00
1,900.0	10.05	114.40	1,894.4	-32.4	71.4	-24.4	0.00	0.00	0.00
2,000.0	10.05	114.40	1,992.9	-39.6	87.3	-29.8	0.00	0.00	0.00
2,100.0	10.05	114.40	2,091.3	-46.8	103.2	-35.3	0.00	0.00	0.00
2,200.0	10.05	114.40	2,189.8	-54.0	119.1	-40.7	0.00	0.00	0.00
2,300.0	10.05	114.40	2,288.3	-61.2	135.0	-46.1	0.00	0.00	0.00
2,400.0	10.05	114.40	2,386.7	-68.5	150.9	-51.6	0.00	0.00	0.00
2,500.0	10.05	114.40	2,485.2	-75.7	166.8	-57.0	0.00	0.00	0.00
2,600.0	10.05	114.40	2,583.7	-82.9	182.7	-62.4	0.00	0.00	0.00
2,700.0	10.05	114.40	2,682.1	-90.1	198.6	-67.8	0.00	0.00	0.00
2,800.0	10.05	114.40	2,780.6	-97.3	214.5	-73.3	0.00	0.00	0.00
2,900.0	10.05	114.40	2,879.0	-104.5	230.3	-78.7	0.00	0.00	0.00
3,000.0	10.05	114.40	2,977.5	-111.7	246.2	-84.1	0.00	0.00	0.00
3,100.0	10.05	114.40	3,076.0	-118.9	262.1	-89.6	0.00	0.00	0.00
3,200.0	10.05	114.40	3,174.4	-126.1	278.0	-95.0	0.00	0.00	0.00
3,300.0	10.05	114.40	3,272.9	-133.3	293.9	-100.4	0.00	0.00	0.00
3,400.0	10.05	114.40	3,371.4	-140.6	309.8	-105.9	0.00	0.00	0.00
3,500.0	10.05	114.40	3,469.8	-147.8	325.7	-111.3	0.00	0.00	0.00
3,600.0	10.05	114.40	3,568.3	-155.0	341.6	-116.7	0.00	0.00	0.00
3,700.0	10.05	114.40	3,666.8	-162.2	357.5	-122.1	0.00	0.00	0.00
3,800.0	10.05	114.40	3,765.2	-169.4	373.4	-127.6	0.00	0.00	0.00
3,900.0	10.05	114.40	3,863.7	-176.6	389.3	-133.0	0.00	0.00	0.00
4,000.0	10.05	114.40	3,962.2	-183.8	405.2	-138.4	0.00	0.00	0.00
4,100.0	10.05	114.40	4,060.6	-191.0	421.1	-143.9	0.00	0.00	0.00
4,200.0	10.05	114.40	4,159.1	-198.2	437.0	-149.3	0.00	0.00	0.00
4,241.6	10.05	114.40	4,200.1	-201.2	443.6	-151.6	0.00	0.00	0.00
Start Drop -2.00									
4,300.0	8.88	114.40	4,257.7	-205.2	452.3	-154.5	2.00	-2.00	0.00
4,400.0	6.88	114.40	4,356.7	-210.9	464.8	-158.8	2.00	-2.00	0.00
4,500.0	4.88	114.40	4,456.2	-215.1	474.1	-162.0	2.00	-2.00	0.00
4,600.0	2.88	114.40	4,555.9	-217.9	480.3	-164.1	2.00	-2.00	0.00
4,700.0	0.88	114.40	4,655.9	-219.3	483.3	-165.1	2.00	-2.00	0.00
4,744.1	0.00	0.00	4,700.0	-219.4	483.6	-165.2	2.00	-2.00	0.00
4,800.0	0.00	0.00	4,755.9	-219.4	483.6	-165.2	0.00	0.00	0.00

Database:	landmark	Local Co-ordinate Reference:	Well Meehl 01N-65W-24-7N
Company:	Verdad Oil & Gas Corporation	TVD Reference:	WELL @ 5038.5ft (RKB - 16.5')
Project:	SEC.24-T1N-R65W	MD Reference:	WELL @ 5038.5ft (RKB - 16.5')
Site:	Meehl 01N-65W-24 Pad Sec.24-T01N-R65W	North Reference:	True
Well:	Meehl 01N-65W-24-7N	Survey Calculation Method:	Minimum Curvature
Wellbore:	Wellbore #1		
Design:	Plan #1 (10-17-14)		

Planned Survey									
Measured Depth (ft)	Inclination (°)	Azimuth (°)	Vertical Depth (ft)	+N/-S (ft)	+E/-W (ft)	Vertical Section (ft)	Dogleg Rate (°/100ft)	Build Rate (°/100ft)	Turn Rate (°/100ft)
4,900.0	0.00	0.00	4,855.9	-219.4	483.6	-165.2	0.00	0.00	0.00
5,000.0	0.00	0.00	4,955.9	-219.4	483.6	-165.2	0.00	0.00	0.00
5,100.0	0.00	0.00	5,055.9	-219.4	483.6	-165.2	0.00	0.00	0.00
5,200.0	0.00	0.00	5,155.9	-219.4	483.6	-165.2	0.00	0.00	0.00
5,300.0	0.00	0.00	5,255.9	-219.4	483.6	-165.2	0.00	0.00	0.00
5,400.0	0.00	0.00	5,355.9	-219.4	483.6	-165.2	0.00	0.00	0.00
5,500.0	0.00	0.00	5,455.9	-219.4	483.6	-165.2	0.00	0.00	0.00
5,600.0	0.00	0.00	5,555.9	-219.4	483.6	-165.2	0.00	0.00	0.00
5,700.0	0.00	0.00	5,655.9	-219.4	483.6	-165.2	0.00	0.00	0.00
5,800.0	0.00	0.00	5,755.9	-219.4	483.6	-165.2	0.00	0.00	0.00
5,900.0	0.00	0.00	5,855.9	-219.4	483.6	-165.2	0.00	0.00	0.00
6,000.0	0.00	0.00	5,955.9	-219.4	483.6	-165.2	0.00	0.00	0.00
6,100.0	0.00	0.00	6,055.9	-219.4	483.6	-165.2	0.00	0.00	0.00
6,200.0	0.00	0.00	6,155.9	-219.4	483.6	-165.2	0.00	0.00	0.00
6,300.0	0.00	0.00	6,255.9	-219.4	483.6	-165.2	0.00	0.00	0.00
6,400.0	0.00	0.00	6,355.9	-219.4	483.6	-165.2	0.00	0.00	0.00
6,500.0	0.00	0.00	6,455.9	-219.4	483.6	-165.2	0.00	0.00	0.00
6,600.0	0.00	0.00	6,555.9	-219.4	483.6	-165.2	0.00	0.00	0.00
6,636.9	0.00	0.00	6,592.8	-219.4	483.6	-165.2	0.00	0.00	0.00
KOP #2 - Start Build 11.00									
6,700.0	6.94	0.24	6,655.7	-215.6	483.6	-161.4	11.00	11.00	0.00
6,800.0	17.94	0.24	6,753.2	-194.1	483.7	-140.1	11.00	11.00	0.00
6,900.0	28.94	0.24	6,844.8	-154.4	483.9	-100.6	11.00	11.00	0.00
7,000.0	39.94	0.24	6,927.2	-97.9	484.1	-44.4	11.00	11.00	0.00
7,100.0	50.94	0.24	6,997.2	-26.7	484.4	26.3	11.00	11.00	0.00
7,200.0	61.94	0.24	7,052.4	56.5	484.8	109.1	11.00	11.00	0.00
7,300.0	72.94	0.24	7,090.7	148.7	485.1	200.8	11.00	11.00	0.00
7,400.0	83.94	0.24	7,110.8	246.5	485.6	298.1	11.00	11.00	0.00
7,457.5	90.27	0.24	7,113.7	303.9	485.8	355.1	11.00	11.00	0.00
7"									
7,500.0	90.27	0.24	7,113.5	346.4	486.0	397.4	0.01	0.01	0.00
7,600.0	90.27	0.24	7,113.0	446.4	486.4	496.9	0.00	0.00	0.00
7,700.0	90.27	0.24	7,112.5	546.4	486.8	596.3	0.00	0.00	0.00
7,800.0	90.27	0.24	7,112.0	646.4	487.2	695.7	0.00	0.00	0.00
7,900.0	90.27	0.24	7,111.6	746.4	487.6	795.2	0.00	0.00	0.00
8,000.0	90.27	0.24	7,111.1	846.4	488.1	894.6	0.00	0.00	0.00
8,100.0	90.27	0.24	7,110.6	946.4	488.5	994.1	0.00	0.00	0.00
8,200.0	90.27	0.24	7,110.2	1,046.4	488.9	1,093.5	0.00	0.00	0.00
8,300.0	90.27	0.24	7,109.7	1,146.4	489.3	1,193.0	0.00	0.00	0.00
8,400.0	90.27	0.24	7,109.2	1,246.4	489.7	1,292.4	0.00	0.00	0.00
8,500.0	90.27	0.24	7,108.7	1,346.4	490.2	1,391.9	0.00	0.00	0.00
8,600.0	90.27	0.24	7,108.3	1,446.4	490.6	1,491.3	0.00	0.00	0.00
8,700.0	90.27	0.24	7,107.8	1,546.4	491.0	1,590.7	0.00	0.00	0.00
8,800.0	90.27	0.24	7,107.3	1,646.4	491.4	1,690.2	0.00	0.00	0.00
8,900.0	90.27	0.24	7,106.9	1,746.4	491.8	1,789.6	0.00	0.00	0.00
9,000.0	90.27	0.24	7,106.4	1,846.3	492.2	1,889.1	0.00	0.00	0.00
9,100.0	90.27	0.24	7,105.9	1,946.3	492.7	1,988.5	0.00	0.00	0.00
9,200.0	90.27	0.24	7,105.4	2,046.3	493.1	2,088.0	0.00	0.00	0.00
9,300.0	90.27	0.24	7,105.0	2,146.3	493.5	2,187.4	0.00	0.00	0.00
9,400.0	90.27	0.24	7,104.5	2,246.3	493.9	2,286.9	0.00	0.00	0.00
9,500.0	90.27	0.24	7,104.0	2,346.3	494.3	2,386.3	0.00	0.00	0.00
9,600.0	90.27	0.24	7,103.6	2,446.3	494.8	2,485.8	0.00	0.00	0.00
9,700.0	90.27	0.24	7,103.1	2,546.3	495.2	2,585.2	0.00	0.00	0.00
9,800.0	90.27	0.24	7,102.6	2,646.3	495.6	2,684.6	0.00	0.00	0.00

Database:	landmark	Local Co-ordinate Reference:	Well Meehl 01N-65W-24-7N
Company:	Verdad Oil & Gas Corporation	TVD Reference:	WELL @ 5038.5ft (RKB - 16.5')
Project:	SEC.24-T1N-R65W	MD Reference:	WELL @ 5038.5ft (RKB - 16.5')
Site:	Meehl 01N-65W-24 Pad Sec.24-T01N-R65W	North Reference:	True
Well:	Meehl 01N-65W-24-7N	Survey Calculation Method:	Minimum Curvature
Wellbore:	Wellbore #1		
Design:	Plan #1 (10-17-14)		

Planned Survey									
Measured Depth (ft)	Inclination (°)	Azimuth (°)	Vertical Depth (ft)	+N/-S (ft)	+E/-W (ft)	Vertical Section (ft)	Dogleg Rate (°/100ft)	Build Rate (°/100ft)	Turn Rate (°/100ft)
9,900.0	90.27	0.24	7,102.1	2,746.3	496.0	2,784.1	0.00	0.00	0.00
10,000.0	90.27	0.24	7,101.7	2,846.3	496.4	2,883.5	0.00	0.00	0.00
10,100.0	90.27	0.24	7,101.2	2,946.3	496.9	2,983.0	0.00	0.00	0.00
10,200.0	90.27	0.24	7,100.7	3,046.3	497.3	3,082.4	0.00	0.00	0.00
10,300.0	90.27	0.24	7,100.3	3,146.3	497.7	3,181.9	0.00	0.00	0.00
10,400.0	90.27	0.24	7,099.8	3,246.3	498.1	3,281.3	0.00	0.00	0.00
10,500.0	90.27	0.24	7,099.3	3,346.3	498.5	3,380.8	0.00	0.00	0.00
10,600.0	90.27	0.24	7,098.9	3,446.3	498.9	3,480.2	0.00	0.00	0.00
10,700.0	90.27	0.24	7,098.4	3,546.3	499.4	3,579.6	0.00	0.00	0.00
10,800.0	90.27	0.24	7,097.9	3,646.3	499.8	3,679.1	0.00	0.00	0.00
10,900.0	90.27	0.24	7,097.4	3,746.3	500.2	3,778.5	0.00	0.00	0.00
11,000.0	90.27	0.24	7,097.0	3,846.3	500.6	3,878.0	0.00	0.00	0.00
11,100.0	90.27	0.24	7,096.5	3,946.3	501.0	3,977.4	0.00	0.00	0.00
11,200.0	90.27	0.24	7,096.0	4,046.3	501.5	4,076.9	0.00	0.00	0.00
11,300.0	90.27	0.24	7,095.6	4,146.3	501.9	4,176.3	0.00	0.00	0.00
11,400.0	90.27	0.24	7,095.1	4,246.3	502.3	4,275.8	0.00	0.00	0.00
11,500.0	90.27	0.24	7,094.6	4,346.3	502.7	4,375.2	0.00	0.00	0.00
11,600.0	90.27	0.24	7,094.1	4,446.3	503.1	4,474.7	0.00	0.00	0.00
11,700.0	90.27	0.24	7,093.7	4,546.3	503.6	4,574.1	0.00	0.00	0.00
11,735.4	90.27	0.24	7,093.5	4,581.7	503.7	4,609.3	0.00	0.00	0.00
TD at 11735.4									

Targets									
Target Name	Dip Angle (°)	Dip Dir. (°)	TVD (ft)	+N/-S (ft)	+E/-W (ft)	Northing (ft)	Easting (ft)	Latitude	Longitude
Sectionline	0.00	0.00	1.0	-270.3	-790.2	1,254,859.18	3,248,966.97	40.029550	-104.610920
- plan misses by 835.1ft at 1.0ft MD (1.0 TVD, 0.0 N, 0.0 E)									
- Polygon									
Point 1			1.0	0.0	0.0	1,254,859.18	3,248,966.97		
Point 2			1.0	0.0	2,000.0	1,254,879.30	3,250,966.79		
460' Setback BHL	0.00	0.00	1.0	4,585.4	-790.2	1,259,714.45	3,248,918.15	40.042879	-104.610920
- plan misses by 4653.0ft at 1.0ft MD (1.0 TVD, 0.0 N, 0.0 E)									
- Polygon									
Point 1			1.0	0.0	0.0	1,259,714.45	3,248,918.15		
Point 2			1.0	0.0	2,000.0	1,259,734.57	3,250,917.97		
BHL 460'FNL & 990'F	0.00	0.00	7,093.5	4,581.7	503.7	1,259,723.80	3,250,211.92	40.042869	-104.606299
- plan hits target									
- Point									
SHL 270'FSL & 1473'I	0.00	0.00	1.0	0.0	0.0	1,255,137.47	3,249,754.35	40.030292	-104.608098
- plan hits target									
- Point									
460' Setback SHL	0.00	0.00	1.0	189.7	-790.2	1,255,319.14	3,248,962.34	40.030813	-104.610920
- plan misses by 812.6ft at 1.0ft MD (1.0 TVD, 0.0 N, 0.0 E)									
- Polygon									
Point 1			1.0	0.0	0.0	1,255,319.14	3,248,962.34		
Point 2			1.0	0.0	2,000.0	1,255,339.26	3,250,962.16		

Database:	landmark	Local Co-ordinate Reference:	Well Meehl 01N-65W-24-7N
Company:	Verdad Oil & Gas Corporation	TVD Reference:	WELL @ 5038.5ft (RKB - 16.5')
Project:	SEC.24-T1N-R65W	MD Reference:	WELL @ 5038.5ft (RKB - 16.5')
Site:	Meehl 01N-65W-24 Pad Sec.24-T01N-R65W	North Reference:	True
Well:	Meehl 01N-65W-24-7N	Survey Calculation Method:	Minimum Curvature
Wellbore:	Wellbore #1		
Design:	Plan #1 (10-17-14)		

Casing Points					
Measured Depth (ft)	Vertical Depth (ft)	Name	Casing Diameter (")	Hole Diameter (")	
7,457.5	7,113.7	7"	7	7-1/2	

Plan Annotations					
Measured Depth (ft)	Vertical Depth (ft)	Local Coordinates			
		+N/-S (ft)	+E/-W (ft)	Comment	
1,200.0	1,200.0	0.0	0.0	KOP - Start Build 2.00	
4,241.6	4,200.0	-18.2	40.0	Start Drop -2.00	
6,636.9	6,592.8	-201.2	443.6	KOP #2 - Start Build 11.00	
11,735.4	7,093.5	-219.4	483.6	TD at 11735.4	



Verdad Oil & Gas Corporation

SEC.24-T1N-R65W

Meehl 01N-65W-24 Pad Sec.24-T01N-R65W

Meehl 01N-65W-24-7N

Wellbore #1

Plan #1 (10-17-14)

Anticollision Report

20 October, 2014

Company:	Verdad Oil & Gas Corporation	Local Co-ordinate Reference:	Well Meehl 01N-65W-24-7N
Project:	SEC.24-T1N-R65W	TVD Reference:	WELL @ 5038.5ft (RKB - 16.5')
Reference Site:	Meehl 01N-65W-24 Pad Sec.24-T01N-R65W	MD Reference:	WELL @ 5038.5ft (RKB - 16.5')
Site Error:	0.0ft	North Reference:	True
Reference Well:	Meehl 01N-65W-24-7N	Survey Calculation Method:	Minimum Curvature
Well Error:	0.0ft	Output errors are at	2.00 sigma
Reference Wellbore	Wellbore #1	Database:	landmark
Reference Design:	Plan #1 (10-17-14)	Offset TVD Reference:	Offset Datum

Reference	Plan #1 (10-17-14)		
Filter type:	NO GLOBAL FILTER: Using user defined selection & filtering criteria		
Interpolation Method:	MD Interval 100.0ft	Error Model:	ISCWSA
Depth Range:	Unlimited	Scan Method:	Closest Approach 3D
Results Limited by:	Maximum center-center distance of 1,000.0ft	Error Surface:	Elliptical Conic
Warning Levels Evaluated at:	2.00 Sigma		

Survey Tool Program	Date 10/20/2014			
From (ft)	To (ft)	Survey (Wellbore)	Tool Name	Description
0.0	11,735.4	Plan #1 (10-17-14) (Wellbore #1)	MWD	MWD - Standard

Summary						
Site Name	Reference Measured Depth (ft)	Offset Measured Depth (ft)	Distance Between Centres (ft)	Distance Between Ellipses (ft)	Separation Factor	Warning
Offset Well - Wellbore - Design						
Meehl 01N-65W-24 Pad Sec.24-T01N-R65W						
Meehl 01N-65W-24-1C - Wellbore #1 - Plan #1 (10-17-14)	200.0	200.0	90.2	89.5	133.729	CC, ES
Meehl 01N-65W-24-1C - Wellbore #1 - Plan #1 (10-17-14)	7,000.0	6,992.8	995.7	965.0	32.428	SF
Meehl 01N-65W-24-2N - Wellbore #1 - Plan #1 (10-17-14)	1,000.0	1,000.0	75.1	70.8	17.574	CC, ES
Meehl 01N-65W-24-2N - Wellbore #1 - Plan #1 (10-17-14)	11,735.4	11,717.3	824.9	645.4	4.597	SF
Meehl 01N-65W-24-3N - Wellbore #1 - Plan #1 (10-17-14)	1,200.0	1,200.0	60.2	55.0	11.647	CC, ES
Meehl 01N-65W-24-3N - Wellbore #1 - Plan #1 (10-17-14)	11,735.4	11,709.2	659.9	480.4	3.675	SF
Meehl 01N-65W-24-4N - Wellbore #1 - Plan #1 (10-17-14)	1,200.0	1,200.0	45.1	39.9	8.721	CC, ES
Meehl 01N-65W-24-4N - Wellbore #1 - Plan #1 (10-17-14)	11,735.4	11,706.7	495.0	315.4	2.756	SF
Meehl 01N-65W-24-5C - Wellbore #1 - Plan #1 (10-17-14)	1,200.0	1,200.0	30.0	24.8	5.796	CC, ES
Meehl 01N-65W-24-5C - Wellbore #1 - Plan #1 (10-17-14)	11,735.4	11,910.2	388.3	230.1	2.454	SF
Meehl 01N-65W-24-6N - Wellbore #1 - Plan #1 (10-17-14)	1,200.0	1,200.0	15.1	10.0	2.925	CC
Meehl 01N-65W-24-6N - Wellbore #1 - Plan #1 (10-17-14)	11,735.4	11,716.8	164.9	-14.7	0.918	Level 1, ES, SF
Meehl 01N-65W-24-8N - Wellbore #1 - Plan #1 (10-17-14)	600.0	600.0	14.8	12.4	6.003	CC
Meehl 01N-65W-24-8N - Wellbore #1 - Plan #1 (10-17-14)	11,735.4	11,757.6	165.2	-14.4	0.920	Level 1, ES, SF
Meehl 01N-65W-24-9C - Wellbore #1 - Plan #1 (10-17-14)	200.0	200.0	30.0	29.3	44.438	CC, ES
Meehl 01N-65W-24-9C - Wellbore #1 - Plan #1 (10-17-14)	11,735.4	12,033.7	388.6	233.4	2.503	SF

Offset Design												
Meehl 01N-65W-24 Pad Sec.24-T01N-R65W - Meehl 01N-65W-24-1C - Wellbore #1 - Plan #1 (10-17-1)												
Survey Program: 0-MWD												
Reference		Offset		Semi Major Axis			Distance					
Measured Depth (ft)	Vertical Depth (ft)	Measured Depth (ft)	Vertical Depth (ft)	Reference (ft)	Offset (ft)	Highside Toolface (°)	Offset Wellbore Centre +N/-S (ft)	+E/-W (ft)	Between Centres (ft)	Between Ellipses (ft)	Minimum Separation (ft)	Separation Factor
0.0	0.0	0.0	0.0	0.0	0.0	-90.21	-0.3	-90.2	90.2			
100.0	100.0	100.0	100.0	0.1	0.1	-90.21	-0.3	-90.2	90.2	89.9	0.22	401.188
200.0	200.0	200.0	200.0	0.3	0.3	-90.21	-0.3	-90.2	90.2	89.5	0.67	133.729 CC, ES
300.0	300.0	297.3	297.2	0.6	0.5	-90.69	-1.1	-91.6	91.7	90.6	1.10	83.193
400.0	400.0	394.3	394.1	0.8	0.8	-92.04	-3.4	-96.0	96.2	94.7	1.54	62.624
500.0	500.0	490.9	490.4	1.0	1.0	-94.01	-7.2	-103.2	103.9	101.9	2.00	51.955
600.0	600.0	587.8	586.7	1.2	1.3	-96.32	-12.5	-113.2	114.7	112.2	2.50	45.882
700.0	700.0	687.0	685.1	1.5	1.6	-98.40	-18.3	-124.2	126.4	123.4	3.03	41.760
800.0	800.0	786.3	783.5	1.7	1.9	-100.13	-24.1	-135.1	138.2	134.7	3.56	38.814
900.0	900.0	885.5	882.0	1.9	2.2	-101.59	-29.9	-146.1	150.2	146.1	4.10	36.626
1,000.0	1,000.0	984.7	980.4	2.1	2.5	-102.83	-35.8	-157.0	162.2	157.6	4.64	34.947
1,100.0	1,100.0	1,083.9	1,078.8	2.4	2.8	-103.90	-41.6	-168.0	174.4	169.2	5.19	33.624

CC - Min centre to center distance or convergent point, SF - min separation factor, ES - min ellipse separation

Company:	Verdad Oil & Gas Corporation	Local Co-ordinate Reference:	Well Meehl 01N-65W-24-7N
Project:	SEC.24-T1N-R65W	TVD Reference:	WELL @ 5038.5ft (RKB - 16.5')
Reference Site:	Meehl 01N-65W-24 Pad Sec.24-T01N-R65W	MD Reference:	WELL @ 5038.5ft (RKB - 16.5')
Site Error:	0.0ft	North Reference:	True
Reference Well:	Meehl 01N-65W-24-7N	Survey Calculation Method:	Minimum Curvature
Well Error:	0.0ft	Output errors are at	2.00 sigma
Reference Wellbore	Wellbore #1	Database:	landmark
Reference Design:	Plan #1 (10-17-14)	Offset TVD Reference:	Offset Datum

Offset Design Meehl 01N-65W-24 Pad Sec.24-T01N-R65W - Meehl 01N-65W-24-1C - Wellbore #1 - Plan #1 (10-17-1												Offset Site Error:	0.0 ft
Survey Program: 0-MWD												Offset Well Error:	0.0 ft
Reference		Offset		Semi Major Axis			Distance						
Measured Depth (ft)	Vertical Depth (ft)	Measured Depth (ft)	Vertical Depth (ft)	Reference (ft)	Offset (ft)	Highside Toolface (°)	Offset Wellbore Centre +N/-S (ft)	+E/-W (ft)	Between Centres (ft)	Between Ellipses (ft)	Minimum Separation (ft)	Separation Factor	Warning
1,200.0	1,200.0	1,183.1	1,177.3	2.6	3.2	-104.83	-47.4	-179.0	186.5	180.8	5.73	32.556	
1,300.0	1,300.0	1,282.2	1,275.6	2.8	3.5	140.11	-53.2	-189.9	200.0	194.4	5.64	35.440	
1,400.0	1,399.8	1,380.9	1,373.5	3.0	3.8	140.07	-58.9	-200.8	216.2	210.1	6.07	35.640	
1,500.0	1,499.5	1,479.0	1,470.9	3.2	4.1	140.53	-64.7	-211.6	235.0	228.6	6.49	36.194	
1,600.0	1,598.7	1,576.6	1,567.6	3.4	4.4	141.35	-70.4	-222.4	256.6	249.7	6.93	37.032	
1,700.0	1,697.5	1,673.4	1,663.7	3.7	4.8	142.41	-76.1	-233.1	280.9	273.5	7.37	38.103	
1,800.0	1,795.9	1,769.7	1,759.3	4.0	5.1	143.77	-81.7	-243.7	306.8	298.9	7.85	39.066	
1,900.0	1,894.4	1,866.1	1,854.9	4.3	5.4	144.92	-87.3	-254.4	332.8	324.4	8.34	39.884	
2,000.0	1,992.9	1,962.4	1,950.5	4.6	5.7	145.91	-93.0	-265.0	358.9	350.0	8.84	40.589	
2,100.0	2,091.3	2,058.8	2,046.1	4.9	6.0	146.76	-98.6	-275.7	385.1	375.7	9.35	41.201	
2,200.0	2,189.8	2,155.2	2,141.7	5.3	6.4	147.50	-104.2	-286.3	411.3	401.5	9.86	41.738	
2,300.0	2,288.3	2,251.5	2,237.3	5.6	6.7	148.16	-109.9	-297.0	437.7	427.3	10.37	42.212	
2,400.0	2,386.7	2,347.9	2,332.9	6.0	7.0	148.74	-115.5	-307.6	464.0	453.1	10.88	42.634	
2,500.0	2,485.2	2,444.2	2,428.5	6.4	7.3	149.25	-121.2	-318.2	490.4	479.0	11.40	43.012	
2,600.0	2,583.7	2,540.6	2,524.1	6.7	7.6	149.72	-126.8	-328.9	516.9	505.0	11.92	43.351	
2,700.0	2,682.1	2,637.0	2,619.7	7.1	7.9	150.14	-132.4	-339.5	543.4	530.9	12.45	43.658	
2,800.0	2,780.6	2,733.3	2,715.3	7.5	8.3	150.52	-138.1	-350.2	569.8	556.9	12.97	43.937	
2,900.0	2,879.0	2,829.7	2,810.9	7.9	8.6	150.87	-143.7	-360.8	596.4	582.9	13.50	44.191	
3,000.0	2,977.5	2,926.0	2,906.5	8.2	8.9	151.18	-149.3	-371.5	622.9	608.9	14.02	44.424	
3,100.0	3,076.0	3,022.4	3,002.1	8.6	9.2	151.47	-155.0	-382.1	649.5	634.9	14.55	44.638	
3,200.0	3,174.4	3,118.8	3,097.7	9.0	9.5	151.74	-160.6	-392.7	676.0	660.9	15.08	44.835	
3,300.0	3,272.9	3,215.1	3,193.3	9.4	9.9	151.99	-166.3	-403.4	702.6	687.0	15.61	45.018	
3,400.0	3,371.4	3,311.5	3,288.9	9.8	10.2	152.22	-171.9	-414.0	729.2	713.1	16.14	45.187	
3,500.0	3,469.8	3,407.8	3,384.6	10.2	10.5	152.44	-177.5	-424.7	755.8	739.1	16.67	45.344	
3,600.0	3,568.3	3,504.2	3,480.2	10.6	10.8	152.64	-183.2	-435.3	782.4	765.2	17.20	45.491	
3,700.0	3,666.8	3,600.6	3,575.8	11.0	11.1	152.82	-188.8	-446.0	809.0	791.3	17.73	45.627	
3,800.0	3,765.2	3,696.9	3,671.4	11.4	11.5	153.00	-194.5	-456.6	835.7	817.4	18.26	45.755	
3,900.0	3,863.7	3,793.3	3,767.0	11.8	11.8	153.16	-200.1	-467.2	862.3	843.5	18.80	45.875	
4,000.0	3,962.2	3,889.6	3,862.6	12.2	12.1	153.31	-205.7	-477.9	888.9	869.6	19.33	45.988	
4,100.0	4,060.6	3,992.6	3,964.7	12.6	12.4	153.47	-211.7	-489.2	915.5	895.6	19.87	46.072	
4,200.0	4,159.1	4,129.2	4,100.7	13.0	12.7	153.78	-217.7	-500.4	939.4	919.0	20.40	46.048	
4,300.0	4,257.7	4,268.3	4,239.7	13.3	12.9	154.33	-220.6	-506.0	958.6	937.7	20.94	45.782	
4,400.0	4,356.7	4,385.3	4,356.7	13.6	13.1	154.84	-220.9	-506.6	971.4	950.0	21.42	45.362	
4,500.0	4,456.2	4,484.8	4,456.2	13.8	13.2	155.18	-220.9	-506.6	980.7	958.9	21.83	44.921	
4,600.0	4,555.9	4,584.6	4,555.9	14.0	13.4	155.39	-220.9	-506.6	986.9	964.7	22.22	44.414	
4,700.0	4,655.9	4,684.5	4,655.9	14.2	13.5	155.50	-220.9	-506.6	989.9	967.3	22.58	43.842	
4,800.0	4,755.9	4,784.5	4,755.9	14.3	13.7	-90.09	-220.9	-506.6	990.2	967.2	22.93	43.189	
4,900.0	4,855.9	4,884.5	4,855.9	14.5	13.8	-90.09	-220.9	-506.6	990.2	966.9	23.28	42.535	
5,000.0	4,955.9	4,984.5	4,955.9	14.6	14.0	-90.09	-220.9	-506.6	990.2	966.5	23.63	41.896	
5,100.0	5,055.9	5,084.5	5,055.9	14.8	14.1	-90.09	-220.9	-506.6	990.2	966.2	23.99	41.269	
5,200.0	5,155.9	5,184.5	5,155.9	14.9	14.3	-90.09	-220.9	-506.6	990.2	965.8	24.35	40.656	
5,300.0	5,255.9	5,284.5	5,255.9	15.1	14.4	-90.09	-220.9	-506.6	990.2	965.5	24.72	40.057	
5,400.0	5,355.9	5,384.5	5,355.9	15.2	14.6	-90.09	-220.9	-506.6	990.2	965.1	25.09	39.470	
5,500.0	5,455.9	5,484.5	5,455.9	15.4	14.8	-90.09	-220.9	-506.6	990.2	964.7	25.46	38.897	
5,600.0	5,555.9	5,584.5	5,555.9	15.6	14.9	-90.09	-220.9	-506.6	990.2	964.3	25.83	38.336	
5,700.0	5,655.9	5,684.5	5,655.9	15.7	15.1	-90.09	-220.9	-506.6	990.2	964.0	26.20	37.787	
5,800.0	5,755.9	5,784.5	5,755.9	15.9	15.2	-90.09	-220.9	-506.6	990.2	963.6	26.58	37.251	
5,900.0	5,855.9	5,884.5	5,855.9	16.1	15.4	-90.09	-220.9	-506.6	990.2	963.2	26.96	36.727	
6,000.0	5,955.9	5,984.5	5,955.9	16.2	15.6	-90.09	-220.9	-506.6	990.2	962.8	27.34	36.214	
6,100.0	6,055.9	6,084.5	6,055.9	16.4	15.8	-90.09	-220.9	-506.6	990.2	962.4	27.73	35.713	
6,200.0	6,155.9	6,184.5	6,155.9	16.6	15.9	-90.09	-220.9	-506.6	990.2	962.1	28.11	35.223	
6,300.0	6,255.9	6,284.5	6,255.9	16.7	16.1	-90.09	-220.9	-506.6	990.2	961.7	28.50	34.745	

CC - Min centre to center distance or convergent point, SF - min separation factor, ES - min ellipse separation

Company:	Verdad Oil & Gas Corporation	Local Co-ordinate Reference:	Well Meehl 01N-65W-24-7N
Project:	SEC.24-T1N-R65W	TVD Reference:	WELL @ 5038.5ft (RKB - 16.5')
Reference Site:	Meehl 01N-65W-24 Pad Sec.24-T01N-R65W	MD Reference:	WELL @ 5038.5ft (RKB - 16.5')
Site Error:	0.0ft	North Reference:	True
Reference Well:	Meehl 01N-65W-24-7N	Survey Calculation Method:	Minimum Curvature
Well Error:	0.0ft	Output errors are at	2.00 sigma
Reference Wellbore	Wellbore #1	Database:	landmark
Reference Design:	Plan #1 (10-17-14)	Offset TVD Reference:	Offset Datum

Offset Design Meehl 01N-65W-24 Pad Sec.24-T01N-R65W - Meehl 01N-65W-24-1C - Wellbore #1 - Plan #1 (10-17-1												Offset Site Error:	0.0 ft
Survey Program: 0-MWD												Offset Well Error:	0.0 ft
Reference		Offset		Semi Major Axis			Distance						
Measured Depth (ft)	Vertical Depth (ft)	Measured Depth (ft)	Vertical Depth (ft)	Reference (ft)	Offset (ft)	Highside Toolface (°)	Offset Wellbore Centre +N/-S (ft)	+E/-W (ft)	Between Centres (ft)	Between Ellipses (ft)	Minimum Separation (ft)	Separation Factor	Warning
6,400.0	6,355.9	6,384.5	6,355.9	16.9	16.3	-90.09	-220.9	-506.6	990.2	961.3	28.89	34.276	
6,500.0	6,455.9	6,484.5	6,455.9	17.1	16.4	-90.09	-220.9	-506.6	990.2	960.9	29.28	33.819	
6,600.0	6,555.9	6,584.5	6,555.9	17.3	16.6	-90.09	-220.9	-506.6	990.2	960.5	29.67	33.371	
6,627.1	6,583.0	6,611.7	6,583.0	17.3	16.7	-90.35	-220.9	-506.6	990.2	960.4	29.77	33.258	
6,700.0	6,655.7	6,684.4	6,655.7	17.4	16.8	-90.55	-220.9	-506.6	990.2	960.2	30.05	32.954	
6,800.0	6,753.2	6,781.9	6,753.2	17.5	17.0	-91.71	-220.9	-506.6	990.6	960.3	30.35	32.639	
6,900.0	6,844.8	6,881.4	6,852.7	17.6	17.1	-93.62	-217.5	-506.6	992.5	961.9	30.58	32.459	
7,000.0	6,927.2	6,992.8	6,961.1	17.6	17.3	-95.64	-192.9	-506.5	995.7	965.0	30.71	32.428 SF	
7,100.0	6,997.2	7,115.7	7,071.7	17.6	17.3	-97.57	-139.9	-506.2	999.8	969.1	30.79	32.472	

Company:	Verdad Oil & Gas Corporation	Local Co-ordinate Reference:	Well Meehl 01N-65W-24-7N
Project:	SEC.24-T1N-R65W	TVD Reference:	WELL @ 5038.5ft (RKB - 16.5')
Reference Site:	Meehl 01N-65W-24 Pad Sec.24-T01N-R65W	MD Reference:	WELL @ 5038.5ft (RKB - 16.5')
Site Error:	0.0ft	North Reference:	True
Reference Well:	Meehl 01N-65W-24-7N	Survey Calculation Method:	Minimum Curvature
Well Error:	0.0ft	Output errors are at	2.00 sigma
Reference Wellbore	Wellbore #1	Database:	landmark
Reference Design:	Plan #1 (10-17-14)	Offset TVD Reference:	Offset Datum

Offset Design												Offset Site Error:	0.0 ft
Survey Program: 0-MWD												Offset Well Error:	0.0 ft
Reference		Offset		Semi Major Axis			Distance						
Measured Depth (ft)	Vertical Depth (ft)	Measured Depth (ft)	Vertical Depth (ft)	Reference (ft)	Offset (ft)	Highside Toolface (°)	Offset Wellbore Centre +N/-S (ft)	+E/-W (ft)	Between Centres (ft)	Between Ellipses (ft)	Minimum Separation (ft)	Separation Factor	Warning
0.0	0.0	0.0	0.0	0.0	0.0	-89.98	0.0	-75.1	75.1				
100.0	100.0	100.0	100.0	0.1	0.1	-89.98	0.0	-75.1	75.1	74.8	0.22	333.906	
200.0	200.0	200.0	200.0	0.3	0.3	-89.98	0.0	-75.1	75.1	74.4	0.67	111.302	
300.0	300.0	300.0	300.0	0.6	0.6	-89.98	0.0	-75.1	75.1	73.9	1.12	66.781	
400.0	400.0	400.0	400.0	0.8	0.8	-89.98	0.0	-75.1	75.1	73.5	1.57	47.701	
500.0	500.0	500.0	500.0	1.0	1.0	-89.98	0.0	-75.1	75.1	73.0	2.02	37.101	
600.0	600.0	600.0	600.0	1.2	1.2	-89.98	0.0	-75.1	75.1	72.6	2.47	30.355	
700.0	700.0	700.0	700.0	1.5	1.5	-89.98	0.0	-75.1	75.1	72.1	2.92	25.685	
800.0	800.0	800.0	800.0	1.7	1.7	-89.98	0.0	-75.1	75.1	71.7	3.37	22.260	
900.0	900.0	900.0	900.0	1.9	1.9	-89.98	0.0	-75.1	75.1	71.2	3.82	19.642	
1,000.0	1,000.0	1,000.0	1,000.0	2.1	2.1	-89.98	0.0	-75.1	75.1	70.8	4.27	17.574 CC, ES	
1,100.0	1,100.0	1,098.0	1,098.0	2.4	2.3	-90.78	-1.0	-76.3	76.4	71.7	4.69	16.273	
1,200.0	1,200.0	1,195.7	1,195.6	2.6	2.5	-93.03	-4.2	-80.2	80.4	75.3	5.10	15.764	
1,300.0	1,300.0	1,293.0	1,292.4	2.8	2.7	149.79	-9.5	-86.6	88.9	83.4	5.50	16.173	
1,400.0	1,399.8	1,389.5	1,388.3	3.0	2.9	147.48	-16.8	-95.4	103.3	97.4	5.89	17.543	
1,500.0	1,499.5	1,487.8	1,485.8	3.2	3.2	146.25	-25.0	-105.3	121.8	115.5	6.29	19.356	
1,600.0	1,598.7	1,585.5	1,582.6	3.4	3.4	146.06	-33.2	-115.1	143.1	136.4	6.70	21.352	
1,700.0	1,697.5	1,682.5	1,678.8	3.7	3.7	146.51	-41.3	-124.9	167.2	160.1	7.12	23.477	
1,800.0	1,795.9	1,779.1	1,774.6	4.0	4.0	147.35	-49.4	-134.6	192.8	185.2	7.57	25.458	
1,900.0	1,894.4	1,875.8	1,870.4	4.3	4.3	148.00	-57.4	-144.3	218.5	210.4	8.04	27.163	
2,000.0	1,992.9	1,972.4	1,966.2	4.6	4.5	148.51	-65.5	-154.0	244.2	235.7	8.52	28.648	
2,100.0	2,091.3	2,069.0	2,062.0	4.9	4.8	148.92	-73.5	-163.7	269.9	260.9	9.01	29.940	
2,200.0	2,189.8	2,165.6	2,157.8	5.3	5.1	149.26	-81.6	-173.5	295.6	286.1	9.51	31.073	
2,300.0	2,288.3	2,262.3	2,253.6	5.6	5.4	149.55	-89.7	-183.2	321.3	311.3	10.02	32.070	
2,400.0	2,386.7	2,358.9	2,349.4	6.0	5.7	149.80	-97.7	-192.9	347.1	336.5	10.53	32.952	
2,500.0	2,485.2	2,455.5	2,445.2	6.4	6.1	150.01	-105.8	-202.6	372.8	361.7	11.05	33.737	
2,600.0	2,583.7	2,552.1	2,541.0	6.7	6.4	150.19	-113.9	-212.4	398.5	387.0	11.57	34.439	
2,700.0	2,682.1	2,648.7	2,636.7	7.1	6.7	150.35	-121.9	-222.1	424.3	412.2	12.10	35.068	
2,800.0	2,780.6	2,745.4	2,732.5	7.5	7.0	150.50	-130.0	-231.8	450.0	437.4	12.63	35.636	
2,900.0	2,879.0	2,842.0	2,828.3	7.9	7.3	150.62	-138.1	-241.5	475.8	462.6	13.16	36.150	
3,000.0	2,977.5	2,938.6	2,924.1	8.2	7.6	150.74	-146.1	-251.2	501.5	487.8	13.70	36.617	
3,100.0	3,076.0	3,035.2	3,019.9	8.6	7.9	150.84	-154.2	-261.0	527.3	513.0	14.23	37.043	
3,200.0	3,174.4	3,131.9	3,115.7	9.0	8.2	150.94	-162.3	-270.7	553.0	538.3	14.77	37.432	
3,300.0	3,272.9	3,228.5	3,211.5	9.4	8.6	151.02	-170.3	-280.4	578.8	563.5	15.32	37.789	
3,400.0	3,371.4	3,325.1	3,307.3	9.8	8.9	151.10	-178.4	-290.1	604.5	588.7	15.86	38.118	
3,500.0	3,469.8	3,421.7	3,403.1	10.2	9.2	151.17	-186.5	-299.9	630.3	613.9	16.40	38.422	
3,600.0	3,568.3	3,518.4	3,498.9	10.6	9.5	151.24	-194.5	-309.6	656.1	639.1	16.95	38.702	
3,700.0	3,666.8	3,615.0	3,594.7	11.0	9.8	151.30	-202.6	-319.3	681.8	664.3	17.50	38.963	
3,800.0	3,765.2	3,727.9	3,706.8	11.4	10.2	151.42	-211.3	-329.8	706.8	688.8	18.05	39.150	
3,900.0	3,863.7	3,850.1	3,828.6	11.8	10.4	151.77	-217.6	-337.4	728.7	710.1	18.58	39.225	
4,000.0	3,962.2	3,973.8	3,952.2	12.2	10.6	152.35	-220.6	-341.0	747.2	728.1	19.08	39.162	
4,100.0	4,060.6	4,082.3	4,060.6	12.6	10.8	153.00	-220.9	-341.4	763.0	743.4	19.55	39.030	
4,200.0	4,159.1	4,180.7	4,159.1	13.0	11.0	153.58	-220.9	-341.4	778.6	758.6	20.00	38.931	
4,300.0	4,257.7	4,279.3	4,257.7	13.3	11.1	154.20	-220.9	-341.4	793.8	773.3	20.47	38.780	
4,400.0	4,356.7	4,378.4	4,356.7	13.6	11.3	154.73	-220.9	-341.4	806.2	785.3	20.91	38.562	
4,500.0	4,456.2	4,477.8	4,456.2	13.8	11.5	155.11	-220.9	-341.4	815.5	794.2	21.32	38.252	
4,600.0	4,555.9	4,577.6	4,555.9	14.0	11.6	155.36	-220.9	-341.4	821.7	799.9	21.71	37.853	
4,700.0	4,655.9	4,677.5	4,655.9	14.2	11.8	155.48	-220.9	-341.4	824.6	802.6	22.07	37.369	
4,800.0	4,755.9	4,777.5	4,755.9	14.3	12.0	-90.10	-220.9	-341.4	825.0	802.5	22.43	36.778	
4,900.0	4,855.9	4,877.5	4,855.9	14.5	12.2	-90.10	-220.9	-341.4	825.0	802.2	22.80	36.185	
5,000.0	4,955.9	4,977.5	4,955.9	14.6	12.3	-90.10	-220.9	-341.4	825.0	801.8	23.17	35.607	
5,100.0	5,055.9	5,077.5	5,055.9	14.8	12.5	-90.10	-220.9	-341.4	825.0	801.4	23.54	35.043	

CC - Min centre to center distance or convergent point, SF - min separation factor, ES - min ellipse separation

Company:	Verdad Oil & Gas Corporation	Local Co-ordinate Reference:	Well Meehl 01N-65W-24-7N
Project:	SEC.24-T1N-R65W	TVD Reference:	WELL @ 5038.5ft (RKB - 16.5')
Reference Site:	Meehl 01N-65W-24 Pad Sec.24-T01N-R65W	MD Reference:	WELL @ 5038.5ft (RKB - 16.5')
Site Error:	0.0ft	North Reference:	True
Reference Well:	Meehl 01N-65W-24-7N	Survey Calculation Method:	Minimum Curvature
Well Error:	0.0ft	Output errors are at	2.00 sigma
Reference Wellbore	Wellbore #1	Database:	landmark
Reference Design:	Plan #1 (10-17-14)	Offset TVD Reference:	Offset Datum

Offset Design												Offset Site Error:	0.0 ft
Survey Program: 0-MWD												Offset Well Error:	0.0 ft
Reference		Offset		Semi Major Axis			Distance						
Measured Depth (ft)	Vertical Depth (ft)	Measured Depth (ft)	Vertical Depth (ft)	Reference (ft)	Offset (ft)	Highside Toolface (°)	Offset Wellbore Centre +N/-S (ft)	+E/-W (ft)	Between Centres (ft)	Between Ellipses (ft)	Minimum Separation (ft)	Separation Factor	Warning
5,200.0	5,155.9	5,177.5	5,155.9	14.9	12.7	-90.10	-220.9	-341.4	825.0	801.0	23.92	34.493	
5,300.0	5,255.9	5,277.5	5,255.9	15.1	12.9	-90.10	-220.9	-341.4	825.0	800.7	24.29	33.956	
5,400.0	5,355.9	5,377.5	5,355.9	15.2	13.1	-90.10	-220.9	-341.4	825.0	800.3	24.68	33.432	
5,500.0	5,455.9	5,477.5	5,455.9	15.4	13.2	-90.10	-220.9	-341.4	825.0	799.9	25.06	32.922	
5,600.0	5,555.9	5,577.5	5,555.9	15.6	13.4	-90.10	-220.9	-341.4	825.0	799.5	25.44	32.424	
5,700.0	5,655.9	5,677.5	5,655.9	15.7	13.6	-90.10	-220.9	-341.4	825.0	799.1	25.83	31.938	
5,800.0	5,755.9	5,777.5	5,755.9	15.9	13.8	-90.10	-220.9	-341.4	825.0	798.7	26.22	31.464	
5,900.0	5,855.9	5,877.5	5,855.9	16.1	14.0	-90.10	-220.9	-341.4	825.0	798.3	26.61	31.002	
6,000.0	5,955.9	5,977.5	5,955.9	16.2	14.2	-90.10	-220.9	-341.4	825.0	797.9	27.00	30.551	
6,100.0	6,055.9	6,077.5	6,055.9	16.4	14.4	-90.10	-220.9	-341.4	825.0	797.6	27.40	30.111	
6,200.0	6,155.9	6,177.5	6,155.9	16.6	14.6	-90.10	-220.9	-341.4	825.0	797.2	27.79	29.682	
6,300.0	6,255.9	6,277.5	6,255.9	16.7	14.7	-90.10	-220.9	-341.4	825.0	796.8	28.19	29.263	
6,400.0	6,355.9	6,377.5	6,355.9	16.9	14.9	-90.10	-220.9	-341.4	825.0	796.4	28.59	28.855	
6,500.0	6,455.9	6,477.5	6,455.9	17.1	15.1	-90.10	-220.9	-341.4	825.0	796.0	28.99	28.456	
6,600.0	6,555.9	6,577.5	6,555.9	17.3	15.3	-90.10	-220.9	-341.4	825.0	795.6	29.39	28.066	
6,700.0	6,655.7	6,678.1	6,656.3	17.4	15.5	-90.34	-217.0	-341.3	825.0	795.2	29.76	27.724	
6,800.0	6,753.2	6,779.1	6,754.7	17.5	15.6	-90.33	-195.1	-341.2	825.0	795.0	29.98	27.519	
6,900.0	6,844.8	6,879.9	6,847.0	17.6	15.7	-90.30	-154.7	-341.1	824.9	794.9	30.09	27.416	
7,000.0	6,927.2	6,980.7	6,929.6	17.6	15.7	-90.26	-97.3	-340.8	824.9	794.8	30.19	27.327	
7,100.0	6,997.2	7,081.4	6,999.7	17.6	15.7	-90.22	-25.2	-340.5	824.9	794.5	30.39	27.141	
7,200.0	7,052.4	7,181.9	7,054.5	17.6	15.8	-90.16	58.8	-340.2	824.9	794.1	30.83	26.754	
7,300.0	7,090.7	7,282.3	7,092.1	17.7	15.9	-90.10	151.7	-339.8	824.9	793.3	31.60	26.107	
7,400.0	7,110.8	7,382.5	7,111.3	17.9	16.4	-90.04	249.9	-339.4	824.9	792.2	32.73	25.207	
7,500.0	7,113.5	7,482.5	7,113.5	18.4	17.2	-90.00	349.8	-339.0	824.9	790.7	34.20	24.120	
7,600.0	7,113.0	7,582.5	7,113.0	19.2	18.1	-90.00	449.8	-338.5	824.9	788.9	36.02	22.902	
7,700.0	7,112.5	7,682.5	7,112.5	20.2	19.2	-90.00	549.8	-338.1	824.9	786.8	38.13	21.634	
7,800.0	7,112.0	7,782.5	7,112.0	21.3	20.4	-90.00	649.8	-337.7	824.9	784.4	40.49	20.371	
7,900.0	7,111.6	7,882.5	7,111.6	22.5	21.7	-90.00	749.8	-337.3	824.9	781.9	43.07	19.153	
8,000.0	7,111.1	7,982.5	7,111.1	23.9	23.0	-90.00	849.8	-336.9	824.9	779.1	45.82	18.004	
8,100.0	7,110.6	8,082.5	7,110.6	25.3	24.5	-90.00	949.8	-336.4	824.9	776.2	48.72	16.933	
8,200.0	7,110.2	8,182.5	7,110.2	26.7	26.0	-90.00	1,049.8	-336.0	824.9	773.2	51.73	15.945	
8,300.0	7,109.7	8,282.5	7,109.7	28.2	27.6	-90.00	1,149.8	-335.6	824.9	770.1	54.85	15.039	
8,400.0	7,109.2	8,382.5	7,109.2	29.8	29.2	-90.00	1,249.8	-335.2	824.9	766.9	58.06	14.209	
8,500.0	7,108.7	8,482.5	7,108.7	31.4	30.8	-90.00	1,349.8	-334.8	824.9	763.6	61.33	13.450	
8,600.0	7,108.3	8,582.5	7,108.3	33.0	32.5	-90.00	1,449.8	-334.3	824.9	760.2	64.67	12.756	
8,700.0	7,107.8	8,682.5	7,107.8	34.7	34.2	-90.00	1,549.8	-333.9	824.9	756.9	68.06	12.121	
8,800.0	7,107.3	8,782.5	7,107.3	36.4	35.9	-90.00	1,649.8	-333.5	824.9	753.4	71.49	11.539	
8,900.0	7,106.9	8,882.5	7,106.9	38.1	37.6	-90.00	1,749.8	-333.1	824.9	749.9	74.96	11.005	
9,000.0	7,106.4	8,982.5	7,106.4	39.8	39.3	-90.00	1,849.8	-332.7	824.9	746.4	78.46	10.513	
9,100.0	7,105.9	9,082.5	7,105.9	41.6	41.1	-90.00	1,949.8	-332.2	824.9	742.9	82.00	10.060	
9,200.0	7,105.4	9,182.5	7,105.4	43.3	42.9	-90.00	2,049.8	-331.8	824.9	739.3	85.56	9.642	
9,300.0	7,105.0	9,282.5	7,105.0	45.1	44.7	-90.00	2,149.8	-331.4	824.9	735.8	89.14	9.254	
9,400.0	7,104.5	9,382.5	7,104.5	46.9	46.5	-90.00	2,249.8	-331.0	824.9	732.2	92.74	8.895	
9,500.0	7,104.0	9,482.5	7,104.0	48.7	48.3	-90.00	2,349.8	-330.5	824.9	728.5	96.36	8.561	
9,600.0	7,103.6	9,582.5	7,103.6	50.5	50.1	-90.00	2,449.8	-330.1	824.9	724.9	99.99	8.250	
9,700.0	7,103.1	9,682.5	7,103.1	52.3	51.9	-90.00	2,549.8	-329.7	824.9	721.3	103.64	7.959	
9,800.0	7,102.6	9,782.5	7,102.6	54.1	53.7	-90.00	2,649.8	-329.3	824.9	717.6	107.30	7.688	
9,900.0	7,102.1	9,882.5	7,102.1	55.9	55.6	-90.00	2,749.8	-328.9	824.9	713.9	110.97	7.434	
10,000.0	7,101.7	9,982.5	7,101.7	57.7	57.4	-90.00	2,849.8	-328.4	824.9	710.2	114.65	7.195	
10,100.0	7,101.2	10,082.5	7,101.2	59.6	59.3	-90.00	2,949.8	-328.0	824.9	706.5	118.34	6.970	
10,200.0	7,100.7	10,182.5	7,100.7	61.4	61.1	-90.00	3,049.8	-327.6	824.9	702.8	122.04	6.759	
10,300.0	7,100.3	10,282.5	7,100.3	63.3	63.0	-90.00	3,149.8	-327.2	824.9	699.1	125.75	6.560	

CC - Min centre to center distance or convergent point, SF - min separation factor, ES - min ellipse separation

Company:	Verdad Oil & Gas Corporation	Local Co-ordinate Reference:	Well Meehl 01N-65W-24-7N
Project:	SEC.24-T1N-R65W	TVD Reference:	WELL @ 5038.5ft (RKB - 16.5')
Reference Site:	Meehl 01N-65W-24 Pad Sec.24-T01N-R65W	MD Reference:	WELL @ 5038.5ft (RKB - 16.5')
Site Error:	0.0ft	North Reference:	True
Reference Well:	Meehl 01N-65W-24-7N	Survey Calculation Method:	Minimum Curvature
Well Error:	0.0ft	Output errors are at	2.00 sigma
Reference Wellbore	Wellbore #1	Database:	landmark
Reference Design:	Plan #1 (10-17-14)	Offset TVD Reference:	Offset Datum

Offset Design Meehl 01N-65W-24 Pad Sec.24-T01N-R65W - Meehl 01N-65W-24-2N - Wellbore #1 - Plan #1 (10-17-1												Offset Site Error:	0.0 ft
Survey Program: 0-MWD												Offset Well Error:	0.0 ft
Reference		Offset		Semi Major Axis			Distance						
Measured Depth (ft)	Vertical Depth (ft)	Measured Depth (ft)	Vertical Depth (ft)	Reference (ft)	Offset (ft)	Highside Toolface (°)	Offset Wellbore Centre +N/-S (ft)	+E/-W (ft)	Between Centres (ft)	Between Ellipses (ft)	Minimum Separation (ft)	Separation Factor	Warning
10,400.0	7,099.8	10,382.5	7,099.8	65.1	64.8	-90.00	3,249.8	-326.8	824.9	695.4	129.46	6.372	
10,500.0	7,099.3	10,482.5	7,099.3	67.0	66.7	-90.00	3,349.8	-326.3	824.9	691.7	133.18	6.194	
10,600.0	7,098.9	10,582.5	7,098.8	68.8	68.5	-90.00	3,449.8	-325.9	824.9	688.0	136.91	6.025	
10,700.0	7,098.4	10,682.5	7,098.4	70.7	70.4	-90.00	3,549.8	-325.5	824.9	684.2	140.64	5.865	
10,800.0	7,097.9	10,782.5	7,097.9	72.5	72.3	-90.00	3,649.8	-325.1	824.9	680.5	144.38	5.713	
10,900.0	7,097.4	10,882.5	7,097.4	74.4	74.1	-90.00	3,749.8	-324.7	824.9	676.8	148.12	5.569	
11,000.0	7,097.0	10,982.5	7,097.0	76.2	76.0	-90.00	3,849.8	-324.2	824.9	673.0	151.87	5.432	
11,100.0	7,096.5	11,082.5	7,096.5	78.1	77.9	-90.00	3,949.8	-323.8	824.9	669.3	155.62	5.301	
11,200.0	7,096.0	11,182.5	7,096.0	80.0	79.8	-90.00	4,049.8	-323.4	824.9	665.5	159.37	5.176	
11,300.0	7,095.6	11,282.5	7,095.5	81.9	81.6	-90.00	4,149.8	-323.0	824.9	661.7	163.13	5.057	
11,400.0	7,095.1	11,382.5	7,095.1	83.7	83.5	-90.00	4,249.8	-322.6	824.9	658.0	166.89	4.943	
11,500.0	7,094.6	11,482.5	7,094.6	85.6	85.4	-90.00	4,349.8	-322.1	824.9	654.2	170.65	4.834	
11,600.0	7,094.1	11,582.5	7,094.1	87.5	87.3	-90.00	4,449.8	-321.7	824.9	650.4	174.42	4.729	
11,700.0	7,093.7	11,682.5	7,093.7	89.4	89.2	-90.00	4,549.8	-321.3	824.9	646.7	178.19	4.629	
11,728.8	7,093.5	11,711.3	7,093.5	89.9	89.7	-90.00	4,578.6	-321.2	824.9	645.6	179.23	4.602	
11,735.4	7,093.5	11,717.3	7,093.5	90.0	89.8	-90.00	4,584.6	-321.2	824.9	645.4	179.45	4.597 SF	

Company:	Verdad Oil & Gas Corporation	Local Co-ordinate Reference:	Well Meehl 01N-65W-24-7N
Project:	SEC.24-T1N-R65W	TVD Reference:	WELL @ 5038.5ft (RKB - 16.5')
Reference Site:	Meehl 01N-65W-24 Pad Sec.24-T01N-R65W	MD Reference:	WELL @ 5038.5ft (RKB - 16.5')
Site Error:	0.0ft	North Reference:	True
Reference Well:	Meehl 01N-65W-24-7N	Survey Calculation Method:	Minimum Curvature
Well Error:	0.0ft	Output errors are at	2.00 sigma
Reference Wellbore	Wellbore #1	Database:	landmark
Reference Design:	Plan #1 (10-17-14)	Offset TVD Reference:	Offset Datum

Offset Design													Offset Site Error:	0.0 ft
Survey Program: 0-MWD													Offset Well Error:	0.0 ft
Reference		Offset		Semi Major Axis			Distance							Warning
Measured Depth (ft)	Vertical Depth (ft)	Measured Depth (ft)	Vertical Depth (ft)	Reference (ft)	Offset (ft)	Highside Toolface (°)	Offset Wellbore Centre +N/-S (ft)	+E/-W (ft)	Between Centres (ft)	Between Ellipses (ft)	Minimum Separation (ft)	Separation Factor		
0.0	0.0	0.0	0.0	0.0	0.0	-90.32	-0.3	-60.2	60.2					
100.0	100.0	100.0	100.0	0.1	0.1	-90.32	-0.3	-60.2	60.2	60.0	0.22	267.876		
200.0	200.0	200.0	200.0	0.3	0.3	-90.32	-0.3	-60.2	60.2	59.5	0.67	89.292		
300.0	300.0	300.0	300.0	0.6	0.6	-90.32	-0.3	-60.2	60.2	59.1	1.12	53.575		
400.0	400.0	400.0	400.0	0.8	0.8	-90.32	-0.3	-60.2	60.2	58.6	1.57	38.268		
500.0	500.0	500.0	500.0	1.0	1.0	-90.32	-0.3	-60.2	60.2	58.2	2.02	29.764		
600.0	600.0	600.0	600.0	1.2	1.2	-90.32	-0.3	-60.2	60.2	57.7	2.47	24.352		
700.0	700.0	700.0	700.0	1.5	1.5	-90.32	-0.3	-60.2	60.2	57.3	2.92	20.606		
800.0	800.0	800.0	800.0	1.7	1.7	-90.32	-0.3	-60.2	60.2	56.8	3.37	17.858		
900.0	900.0	900.0	900.0	1.9	1.9	-90.32	-0.3	-60.2	60.2	56.4	3.82	15.757		
1,000.0	1,000.0	1,000.0	1,000.0	2.1	2.1	-90.32	-0.3	-60.2	60.2	55.9	4.27	14.099		
1,100.0	1,100.0	1,100.0	1,100.0	2.4	2.4	-90.32	-0.3	-60.2	60.2	55.5	4.72	12.756		
1,200.0	1,200.0	1,200.0	1,200.0	2.6	2.6	-90.32	-0.3	-60.2	60.2	55.0	5.17	11.647 CC, ES		
1,300.0	1,300.0	1,300.0	1,300.0	2.8	2.8	155.94	-0.3	-60.2	61.8	56.2	5.60	11.040		
1,400.0	1,399.8	1,399.8	1,399.8	3.0	3.0	157.74	-0.3	-60.2	66.6	60.6	6.01	11.091		
1,500.0	1,499.5	1,499.5	1,499.5	3.2	3.3	160.22	-0.3	-60.2	74.8	68.3	6.41	11.655		
1,600.0	1,598.7	1,598.7	1,598.7	3.4	3.5	162.88	-0.3	-60.2	86.3	79.5	6.82	12.658		
1,700.0	1,697.5	1,696.4	1,696.4	3.7	3.7	164.50	-1.8	-61.0	101.9	94.7	7.20	14.160		
1,800.0	1,795.9	1,793.5	1,793.3	4.0	3.8	164.44	-6.1	-63.3	120.3	112.8	7.58	15.869		
1,900.0	1,894.4	1,890.0	1,889.5	4.3	4.0	163.10	-13.3	-67.1	139.9	131.9	7.99	17.511		
2,000.0	1,992.9	1,986.7	1,985.6	4.6	4.2	161.08	-23.1	-72.2	160.6	152.1	8.42	19.076		
2,100.0	2,091.3	2,084.4	2,082.5	4.9	4.4	159.34	-33.5	-77.7	181.6	172.8	8.87	20.484		
2,200.0	2,189.8	2,182.0	2,179.4	5.3	4.6	157.96	-43.9	-83.2	202.8	193.5	9.33	21.732		
2,300.0	2,288.3	2,279.6	2,276.3	5.6	4.9	156.85	-54.3	-88.7	224.1	214.3	9.81	22.836		
2,400.0	2,386.7	2,377.2	2,373.3	6.0	5.1	155.92	-64.7	-94.2	245.4	235.1	10.31	23.812		
2,500.0	2,485.2	2,474.9	2,470.2	6.4	5.4	155.15	-75.1	-99.6	266.8	256.0	10.81	24.682		
2,600.0	2,583.7	2,572.5	2,567.1	6.7	5.6	154.49	-85.5	-105.1	288.3	277.0	11.33	25.455		
2,700.0	2,682.1	2,670.1	2,664.0	7.1	5.9	153.92	-95.9	-110.6	309.8	297.9	11.85	26.146		
2,800.0	2,780.6	2,767.7	2,760.9	7.5	6.2	153.43	-106.2	-116.1	331.3	318.9	12.38	26.766		
2,900.0	2,879.0	2,865.4	2,857.8	7.9	6.4	152.99	-116.6	-121.6	352.8	339.9	12.91	27.322		
3,000.0	2,977.5	2,963.0	2,954.8	8.2	6.7	152.61	-127.0	-127.1	374.3	360.9	13.45	27.825		
3,100.0	3,076.0	3,060.6	3,051.7	8.6	7.0	152.26	-137.4	-132.5	395.9	381.9	14.00	28.280		
3,200.0	3,174.4	3,158.2	3,148.6	9.0	7.3	151.96	-147.8	-138.0	417.4	402.9	14.55	28.693		
3,300.0	3,272.9	3,255.9	3,245.5	9.4	7.5	151.68	-158.2	-143.5	439.0	423.9	15.10	29.069		
3,400.0	3,371.4	3,353.5	3,342.4	9.8	7.8	151.43	-168.6	-149.0	460.6	444.9	15.66	29.412		
3,500.0	3,469.8	3,451.1	3,439.3	10.2	8.1	151.20	-179.0	-154.5	482.2	465.9	16.22	29.727		
3,600.0	3,568.3	3,548.7	3,536.2	10.6	8.4	150.99	-189.4	-160.0	503.8	487.0	16.78	30.016		
3,700.0	3,666.8	3,646.4	3,633.2	11.0	8.7	150.80	-199.8	-165.4	525.4	508.0	17.35	30.283		
3,800.0	3,765.2	3,752.5	3,738.7	11.4	9.0	150.72	-210.0	-170.8	546.4	528.5	17.90	30.521		
3,900.0	3,863.7	3,861.9	3,847.8	11.8	9.2	150.99	-217.0	-174.5	565.5	547.0	18.42	30.696		
4,000.0	3,962.2	3,971.9	3,957.7	12.2	9.4	151.61	-220.3	-176.3	582.6	563.7	18.91	30.810		
4,100.0	4,060.6	4,074.8	4,060.6	12.6	9.6	152.41	-220.5	-176.4	598.2	578.8	19.36	30.893		
4,200.0	4,159.1	4,173.3	4,159.1	13.0	9.8	153.16	-220.5	-176.4	613.8	594.0	19.81	30.987		
4,300.0	4,257.7	4,271.9	4,257.7	13.3	10.0	153.93	-220.5	-176.4	628.9	608.6	20.26	31.041		
4,400.0	4,356.7	4,370.9	4,356.7	13.6	10.2	154.57	-220.5	-176.4	641.3	620.6	20.68	31.011		
4,500.0	4,456.2	4,470.4	4,456.2	13.8	10.4	155.04	-220.5	-176.4	650.6	629.5	21.08	30.864		
4,600.0	4,555.9	4,570.1	4,555.9	14.0	10.6	155.34	-220.5	-176.4	656.7	635.3	21.46	30.607		
4,700.0	4,655.9	4,670.1	4,655.9	14.2	10.7	155.48	-220.5	-176.4	659.7	637.9	21.81	30.245		
4,800.0	4,755.9	4,770.1	4,755.9	14.3	10.9	-90.10	-220.5	-176.4	660.0	637.8	22.18	29.754		
4,900.0	4,855.9	4,870.1	4,855.9	14.5	11.1	-90.10	-220.5	-176.4	660.0	637.5	22.56	29.259		
5,000.0	4,955.9	4,970.1	4,955.9	14.6	11.3	-90.10	-220.5	-176.4	660.0	637.1	22.93	28.778		
5,100.0	5,055.9	5,070.1	5,055.9	14.8	11.5	-90.10	-220.5	-176.4	660.0	636.7	23.31	28.309		

CC - Min centre to center distance or convergent point, SF - min separation factor, ES - min ellipse separation

Company:	Verdad Oil & Gas Corporation	Local Co-ordinate Reference:	Well Meehl 01N-65W-24-7N
Project:	SEC.24-T1N-R65W	TVD Reference:	WELL @ 5038.5ft (RKB - 16.5')
Reference Site:	Meehl 01N-65W-24 Pad Sec.24-T01N-R65W	MD Reference:	WELL @ 5038.5ft (RKB - 16.5')
Site Error:	0.0ft	North Reference:	True
Reference Well:	Meehl 01N-65W-24-7N	Survey Calculation Method:	Minimum Curvature
Well Error:	0.0ft	Output errors are at	2.00 sigma
Reference Wellbore	Wellbore #1	Database:	landmark
Reference Design:	Plan #1 (10-17-14)	Offset TVD Reference:	Offset Datum

Offset Design												Offset Site Error:	0.0 ft
Survey Program: 0-MWD												Offset Well Error:	0.0 ft
Reference		Offset		Semi Major Axis			Distance						Warning
Measured Depth (ft)	Vertical Depth (ft)	Measured Depth (ft)	Vertical Depth (ft)	Reference (ft)	Offset (ft)	Highside Toolface (°)	Offset Wellbore Centre +N/-S (ft)	+E/-W (ft)	Between Centres (ft)	Between Ellipses (ft)	Minimum Separation (ft)	Separation Factor	
5,200.0	5,155.9	5,170.1	5,155.9	14.9	11.7	-90.10	-220.5	-176.4	660.0	636.3	23.70	27.852	
5,300.0	5,255.9	5,270.1	5,255.9	15.1	11.9	-90.10	-220.5	-176.4	660.0	635.9	24.08	27.407	
5,400.0	5,355.9	5,370.1	5,355.9	15.2	12.1	-90.10	-220.5	-176.4	660.0	635.5	24.47	26.974	
5,500.0	5,455.9	5,470.1	5,455.9	15.4	12.3	-90.10	-220.5	-176.4	660.0	635.2	24.86	26.552	
5,600.0	5,555.9	5,570.1	5,555.9	15.6	12.5	-90.10	-220.5	-176.4	660.0	634.8	25.25	26.141	
5,700.0	5,655.9	5,670.1	5,655.9	15.7	12.7	-90.10	-220.5	-176.4	660.0	634.4	25.64	25.740	
5,800.0	5,755.9	5,770.1	5,755.9	15.9	12.9	-90.10	-220.5	-176.4	660.0	634.0	26.04	25.350	
5,900.0	5,855.9	5,870.1	5,855.9	16.1	13.1	-90.10	-220.5	-176.4	660.0	633.6	26.43	24.970	
6,000.0	5,955.9	5,970.1	5,955.9	16.2	13.3	-90.10	-220.5	-176.4	660.0	633.2	26.83	24.599	
6,100.0	6,055.9	6,070.1	6,055.9	16.4	13.5	-90.10	-220.5	-176.4	660.0	632.8	27.23	24.238	
6,200.0	6,155.9	6,170.1	6,155.9	16.6	13.7	-90.10	-220.5	-176.4	660.0	632.4	27.63	23.886	
6,300.0	6,255.9	6,270.1	6,255.9	16.7	13.9	-90.10	-220.5	-176.4	660.0	632.0	28.03	23.543	
6,400.0	6,355.9	6,370.1	6,355.9	16.9	14.1	-90.10	-220.5	-176.4	660.0	631.6	28.44	23.209	
6,500.0	6,455.9	6,470.1	6,455.9	17.1	14.3	-90.10	-220.5	-176.4	660.0	631.2	28.84	22.882	
6,600.0	6,555.9	6,570.1	6,555.9	17.3	14.5	-90.10	-220.5	-176.4	660.0	630.8	29.25	22.564	
6,700.0	6,655.7	6,670.6	6,656.2	17.4	14.7	-90.34	-216.7	-176.4	660.0	630.4	29.61	22.286	
6,800.0	6,753.2	6,771.3	6,754.4	17.5	14.8	-90.32	-194.8	-176.3	660.0	630.2	29.84	22.116	
6,900.0	6,844.8	6,872.0	6,846.5	17.6	14.9	-90.30	-154.6	-176.1	660.0	630.0	29.96	22.028	
7,000.0	6,927.2	6,972.6	6,929.1	17.6	15.0	-90.26	-97.4	-175.9	660.0	629.9	30.07	21.949	
7,100.0	6,997.2	7,073.1	6,999.2	17.6	15.0	-90.21	-25.5	-175.6	660.0	629.7	30.29	21.790	
7,200.0	7,052.4	7,173.6	7,054.1	17.6	15.2	-90.16	58.4	-175.2	660.0	629.3	30.74	21.470	
7,300.0	7,090.7	7,273.8	7,091.8	17.7	15.6	-90.10	151.1	-174.8	660.0	628.5	31.52	20.940	
7,400.0	7,110.8	7,374.0	7,111.2	17.9	16.2	-90.04	249.2	-174.4	660.0	627.3	32.66	20.209	
7,500.0	7,113.5	7,474.0	7,113.5	18.4	16.9	-90.00	349.1	-174.0	660.0	625.8	34.15	19.327	
7,600.0	7,113.0	7,574.0	7,113.0	19.2	17.9	-90.00	449.1	-173.6	660.0	624.0	35.98	18.345	
7,700.0	7,112.5	7,674.0	7,112.5	20.2	18.9	-90.00	549.1	-173.2	660.0	621.9	38.10	17.324	
7,800.0	7,112.0	7,774.0	7,112.0	21.3	20.1	-90.00	649.1	-172.8	660.0	619.5	40.47	16.308	
7,900.0	7,111.6	7,874.0	7,111.6	22.5	21.5	-90.00	749.1	-172.3	660.0	616.9	43.05	15.330	
8,000.0	7,111.1	7,974.0	7,111.1	23.9	22.8	-90.00	849.1	-171.9	660.0	614.2	45.81	14.407	
8,100.0	7,110.6	8,074.0	7,110.6	25.3	24.3	-90.00	949.1	-171.5	660.0	611.3	48.71	13.548	
8,200.0	7,110.2	8,174.0	7,110.2	26.7	25.8	-90.00	1,049.1	-171.1	660.0	608.2	51.74	12.757	
8,300.0	7,109.7	8,274.0	7,109.7	28.2	27.4	-90.00	1,149.1	-170.7	660.0	605.1	54.86	12.030	
8,400.0	7,109.2	8,374.0	7,109.2	29.8	29.0	-90.00	1,249.1	-170.2	660.0	601.9	58.07	11.366	
8,500.0	7,108.7	8,474.0	7,108.7	31.4	30.7	-90.00	1,349.1	-169.8	660.0	598.6	61.35	10.758	
8,600.0	7,108.3	8,574.0	7,108.3	33.0	32.3	-90.00	1,449.1	-169.4	660.0	595.3	64.69	10.203	
8,700.0	7,107.8	8,674.0	7,107.8	34.7	34.0	-90.00	1,549.1	-169.0	660.0	591.9	68.08	9.694	
8,800.0	7,107.3	8,774.0	7,107.3	36.4	35.7	-90.00	1,649.1	-168.6	660.0	588.5	71.51	9.229	
8,900.0	7,106.9	8,874.0	7,106.9	38.1	37.5	-90.00	1,749.1	-168.1	660.0	585.0	74.99	8.801	
9,000.0	7,106.4	8,974.0	7,106.4	39.8	39.2	-90.00	1,849.1	-167.7	660.0	581.5	78.49	8.408	
9,100.0	7,105.9	9,074.0	7,105.9	41.6	41.0	-90.00	1,949.1	-167.3	660.0	577.9	82.03	8.046	
9,200.0	7,105.4	9,174.0	7,105.4	43.3	42.8	-90.00	2,049.1	-166.9	660.0	574.4	85.59	7.711	
9,300.0	7,105.0	9,274.0	7,105.0	45.1	44.6	-90.00	2,149.1	-166.5	660.0	570.8	89.17	7.401	
9,400.0	7,104.5	9,374.0	7,104.5	46.9	46.4	-90.00	2,249.1	-166.0	660.0	567.2	92.77	7.114	
9,500.0	7,104.0	9,474.0	7,104.0	48.7	48.2	-90.00	2,349.1	-165.6	660.0	563.6	96.39	6.847	
9,600.0	7,103.6	9,574.0	7,103.6	50.5	50.0	-90.00	2,449.1	-165.2	660.0	559.9	100.03	6.598	
9,700.0	7,103.1	9,674.0	7,103.1	52.3	51.9	-90.00	2,549.1	-164.8	660.0	556.3	103.68	6.366	
9,800.0	7,102.6	9,774.0	7,102.6	54.1	53.7	-90.00	2,649.1	-164.4	660.0	552.6	107.34	6.148	
9,900.0	7,102.1	9,874.0	7,102.1	55.9	55.5	-90.00	2,749.1	-163.9	660.0	549.0	111.01	5.945	
10,000.0	7,101.7	9,974.0	7,101.7	57.7	57.4	-90.00	2,849.1	-163.5	660.0	545.3	114.70	5.754	
10,100.0	7,101.2	10,074.0	7,101.2	59.6	59.2	-90.00	2,949.1	-163.1	660.0	541.6	118.39	5.575	
10,200.0	7,100.7	10,174.0	7,100.7	61.4	61.1	-90.00	3,049.1	-162.7	660.0	537.9	122.09	5.406	
10,300.0	7,100.3	10,274.0	7,100.3	63.3	62.9	-90.00	3,149.1	-162.3	660.0	534.2	125.80	5.246	

CC - Min centre to center distance or convergent point, SF - min separation factor, ES - min ellipse separation

Company:	Verdad Oil & Gas Corporation	Local Co-ordinate Reference:	Well Meehl 01N-65W-24-7N
Project:	SEC.24-T1N-R65W	TVD Reference:	WELL @ 5038.5ft (RKB - 16.5')
Reference Site:	Meehl 01N-65W-24 Pad Sec.24-T01N-R65W	MD Reference:	WELL @ 5038.5ft (RKB - 16.5')
Site Error:	0.0ft	North Reference:	True
Reference Well:	Meehl 01N-65W-24-7N	Survey Calculation Method:	Minimum Curvature
Well Error:	0.0ft	Output errors are at	2.00 sigma
Reference Wellbore	Wellbore #1	Database:	landmark
Reference Design:	Plan #1 (10-17-14)	Offset TVD Reference:	Offset Datum

Offset Design Meehl 01N-65W-24 Pad Sec.24-T01N-R65W - Meehl 01N-65W-24-3N - Wellbore #1 - Plan #1 (10-17-1												Offset Site Error:	0.0 ft
Survey Program: 0-MWD												Offset Well Error:	0.0 ft
Reference		Offset		Semi Major Axis			Distance						
Measured Depth (ft)	Vertical Depth (ft)	Measured Depth (ft)	Vertical Depth (ft)	Reference (ft)	Offset (ft)	Highside Toolface (°)	Offset Wellbore Centre +N/-S (ft)	+E/-W (ft)	Between Centres (ft)	Between Ellipses (ft)	Minimum Separation (ft)	Separation Factor	Warning
10,400.0	7,099.8	10,374.0	7,099.8	65.1	64.8	-90.00	3,249.1	-161.8	660.0	530.5	129.51	5.096	
10,500.0	7,099.3	10,474.0	7,099.3	67.0	66.6	-90.00	3,349.1	-161.4	660.0	526.7	133.23	4.953	
10,600.0	7,098.9	10,574.0	7,098.8	68.8	68.5	-90.00	3,449.1	-161.0	660.0	523.0	136.96	4.819	
10,700.0	7,098.4	10,674.0	7,098.4	70.7	70.4	-90.00	3,549.1	-160.6	660.0	519.3	140.69	4.691	
10,800.0	7,097.9	10,774.0	7,097.9	72.5	72.2	-90.00	3,649.1	-160.2	660.0	515.5	144.43	4.569	
10,900.0	7,097.4	10,874.0	7,097.4	74.4	74.1	-90.00	3,749.1	-159.7	660.0	511.8	148.17	4.454	
11,000.0	7,097.0	10,974.0	7,097.0	76.2	76.0	-90.00	3,849.1	-159.3	660.0	508.0	151.92	4.344	
11,100.0	7,096.5	11,074.0	7,096.5	78.1	77.9	-90.00	3,949.1	-158.9	660.0	504.3	155.67	4.239	
11,200.0	7,096.0	11,174.0	7,096.0	80.0	79.7	-90.00	4,049.1	-158.5	660.0	500.5	159.42	4.140	
11,300.0	7,095.6	11,274.0	7,095.6	81.9	81.6	-90.00	4,149.1	-158.1	660.0	496.8	163.18	4.044	
11,400.0	7,095.1	11,374.0	7,095.1	83.7	83.5	-90.00	4,249.1	-157.7	660.0	493.0	166.94	3.953	
11,500.0	7,094.6	11,474.0	7,094.6	85.6	85.4	-90.00	4,349.1	-157.2	660.0	489.2	170.71	3.866	
11,600.0	7,094.1	11,574.0	7,094.1	87.5	87.3	-90.00	4,449.1	-156.8	659.9	485.5	174.47	3.783	
11,700.0	7,093.7	11,674.0	7,093.7	89.4	89.2	-90.00	4,549.1	-156.4	659.9	481.7	178.24	3.703	
11,724.1	7,093.6	11,698.1	7,093.6	89.8	89.6	-90.00	4,573.1	-156.3	659.9	480.8	179.15	3.684	
11,735.4	7,093.5	11,709.2	7,093.5	90.0	89.8	-90.00	4,584.3	-156.2	659.9	480.4	179.57	3.675 SF	

Company:	Verdad Oil & Gas Corporation	Local Co-ordinate Reference:	Well Meehl 01N-65W-24-7N
Project:	SEC.24-T1N-R65W	TVD Reference:	WELL @ 5038.5ft (RKB - 16.5')
Reference Site:	Meehl 01N-65W-24 Pad Sec.24-T01N-R65W	MD Reference:	WELL @ 5038.5ft (RKB - 16.5')
Site Error:	0.0ft	North Reference:	True
Reference Well:	Meehl 01N-65W-24-7N	Survey Calculation Method:	Minimum Curvature
Well Error:	0.0ft	Output errors are at	2.00 sigma
Reference Wellbore	Wellbore #1	Database:	landmark
Reference Design:	Plan #1 (10-17-14)	Offset TVD Reference:	Offset Datum

Offset Design													Offset Site Error:	0.0 ft
Survey Program: 0-MWD													Offset Well Error:	0.0 ft
Reference		Offset		Semi Major Axis			Distance							Warning
Measured Depth (ft)	Vertical Depth (ft)	Measured Depth (ft)	Vertical Depth (ft)	Reference (ft)	Offset (ft)	Highside Toolface (°)	Offset Wellbore Centre +N/-S (ft)	+E/-W (ft)	Between Centres (ft)	Between Ellipses (ft)	Minimum Separation (ft)	Separation Factor		
0.0	0.0	0.0	0.0	0.0	0.0	-89.96	0.0	-45.1	45.1					
100.0	100.0	100.0	100.0	0.1	0.1	-89.96	0.0	-45.1	45.1	44.9	0.22	200.593		
200.0	200.0	200.0	200.0	0.3	0.3	-89.96	0.0	-45.1	45.1	44.4	0.67	66.864		
300.0	300.0	300.0	300.0	0.6	0.6	-89.96	0.0	-45.1	45.1	44.0	1.12	40.119		
400.0	400.0	400.0	400.0	0.8	0.8	-89.96	0.0	-45.1	45.1	43.5	1.57	28.656		
500.0	500.0	500.0	500.0	1.0	1.0	-89.96	0.0	-45.1	45.1	43.1	2.02	22.288		
600.0	600.0	600.0	600.0	1.2	1.2	-89.96	0.0	-45.1	45.1	42.6	2.47	18.236		
700.0	700.0	700.0	700.0	1.5	1.5	-89.96	0.0	-45.1	45.1	42.2	2.92	15.430		
800.0	800.0	800.0	800.0	1.7	1.7	-89.96	0.0	-45.1	45.1	41.7	3.37	13.373		
900.0	900.0	900.0	900.0	1.9	1.9	-89.96	0.0	-45.1	45.1	41.3	3.82	11.800		
1,000.0	1,000.0	1,000.0	1,000.0	2.1	2.1	-89.96	0.0	-45.1	45.1	40.8	4.27	10.558		
1,100.0	1,100.0	1,100.0	1,100.0	2.4	2.4	-89.96	0.0	-45.1	45.1	40.4	4.72	9.552		
1,200.0	1,200.0	1,200.0	1,200.0	2.6	2.6	-89.96	0.0	-45.1	45.1	39.9	5.17	8.721 CC, ES		
1,300.0	1,300.0	1,300.0	1,300.0	2.8	2.8	156.51	0.0	-45.1	46.7	41.1	5.60	8.340		
1,400.0	1,399.8	1,399.8	1,399.8	3.0	3.0	158.79	0.0	-45.1	51.5	45.5	6.01	8.579		
1,500.0	1,499.5	1,499.5	1,499.5	3.2	3.3	161.76	0.0	-45.1	59.7	53.3	6.41	9.314		
1,600.0	1,598.7	1,598.7	1,598.7	3.4	3.5	164.76	0.0	-45.1	71.4	64.6	6.82	10.474		
1,700.0	1,697.5	1,697.5	1,697.5	3.7	3.7	167.41	0.0	-45.1	86.6	79.4	7.22	11.996		
1,800.0	1,795.9	1,795.9	1,795.9	4.0	3.9	169.51	0.0	-45.1	103.7	96.1	7.65	13.560		
1,900.0	1,894.4	1,896.0	1,896.0	4.3	4.1	170.33	-1.6	-44.8	120.3	112.2	8.06	14.923		
2,000.0	1,992.9	1,996.6	1,996.5	4.6	4.3	169.58	-6.6	-44.1	135.5	127.0	8.46	16.025		
2,100.0	2,091.3	2,097.4	2,096.9	4.9	4.5	167.71	-15.2	-42.8	149.5	140.6	8.87	16.850		
2,200.0	2,189.8	2,197.1	2,195.9	5.3	4.7	165.19	-26.6	-41.0	162.6	153.3	9.31	17.465		
2,300.0	2,288.3	2,296.0	2,294.1	5.6	4.9	162.96	-38.3	-39.2	175.8	166.1	9.77	17.999		
2,400.0	2,386.7	2,394.9	2,392.3	6.0	5.1	161.05	-49.9	-37.5	189.3	179.1	10.25	18.470		
2,500.0	2,485.2	2,493.8	2,490.5	6.4	5.3	159.39	-61.5	-35.7	203.0	192.3	10.75	18.885		
2,600.0	2,583.7	2,592.7	2,588.7	6.7	5.6	157.94	-73.2	-33.9	216.9	205.6	11.27	19.250		
2,700.0	2,682.1	2,691.6	2,686.9	7.1	5.8	156.67	-84.8	-32.1	230.8	219.0	11.79	19.570		
2,800.0	2,780.6	2,790.5	2,785.1	7.5	6.0	155.54	-96.5	-30.4	244.9	232.5	12.33	19.852		
2,900.0	2,879.0	2,889.4	2,883.3	7.9	6.3	154.53	-108.1	-28.6	259.0	246.1	12.89	20.100		
3,000.0	2,977.5	2,988.3	2,981.5	8.2	6.6	153.63	-119.7	-26.8	273.2	259.8	13.45	20.318		
3,100.0	3,076.0	3,087.2	3,079.7	8.6	6.8	152.82	-131.4	-25.0	287.5	273.4	14.01	20.512		
3,200.0	3,174.4	3,186.1	3,177.9	9.0	7.1	152.08	-143.0	-23.3	301.8	287.2	14.59	20.684		
3,300.0	3,272.9	3,285.0	3,276.1	9.4	7.4	151.41	-154.6	-21.5	316.1	301.0	15.17	20.837		
3,400.0	3,371.4	3,383.9	3,374.3	9.8	7.7	150.80	-166.3	-19.7	330.5	314.8	15.76	20.974		
3,500.0	3,469.8	3,482.8	3,472.5	10.2	7.9	150.24	-177.9	-17.9	345.0	328.6	16.35	21.096		
3,600.0	3,568.3	3,581.7	3,570.7	10.6	8.2	149.72	-189.6	-16.2	359.4	342.5	16.95	21.206		
3,700.0	3,666.8	3,680.6	3,668.8	11.0	8.5	149.25	-201.2	-14.4	373.9	356.4	17.55	21.308		
3,800.0	3,765.2	3,778.9	3,766.7	11.4	8.8	149.12	-210.8	-12.9	388.5	370.4	18.09	21.475		
3,900.0	3,863.7	3,877.1	3,864.7	11.8	9.0	149.47	-217.0	-12.0	403.3	384.7	18.59	21.693		
4,000.0	3,962.2	3,975.0	3,962.5	12.2	9.2	150.27	-219.9	-11.5	418.3	399.2	19.04	21.963		
4,100.0	4,060.6	4,073.1	4,060.6	12.6	9.4	151.37	-220.2	-11.5	433.5	414.1	19.46	22.274		
4,200.0	4,159.1	4,171.6	4,159.1	13.0	9.5	152.44	-220.2	-11.5	449.0	429.1	19.88	22.585		
4,300.0	4,257.7	4,270.2	4,257.7	13.3	9.7	153.47	-220.2	-11.5	464.0	443.7	20.30	22.859		
4,400.0	4,356.7	4,369.2	4,356.7	13.6	9.9	154.32	-220.2	-11.5	476.4	455.7	20.69	23.028		
4,500.0	4,456.2	4,468.7	4,456.2	13.8	10.1	154.92	-220.2	-11.5	485.6	464.6	21.06	23.058		
4,600.0	4,555.9	4,568.4	4,555.9	14.0	10.3	155.31	-220.2	-11.5	491.8	470.4	21.42	22.957		
4,700.0	4,655.9	4,668.4	4,655.9	14.2	10.5	155.49	-220.2	-11.5	494.8	473.0	21.77	22.732		
4,800.0	4,755.9	4,768.4	4,755.9	14.3	10.7	-90.09	-220.2	-11.5	495.1	472.9	22.14	22.363		
4,900.0	4,855.9	4,868.4	4,855.9	14.5	10.9	-90.09	-220.2	-11.5	495.1	472.6	22.52	21.989		
5,000.0	4,955.9	4,968.4	4,955.9	14.6	11.1	-90.09	-220.2	-11.5	495.1	472.2	22.90	21.624		
5,100.0	5,055.9	5,068.4	5,055.9	14.8	11.3	-90.09	-220.2	-11.5	495.1	471.8	23.28	21.269		

CC - Min centre to center distance or convergent point, SF - min separation factor, ES - min ellipse separation

Company:	Verdad Oil & Gas Corporation	Local Co-ordinate Reference:	Well Meehl 01N-65W-24-7N
Project:	SEC.24-T1N-R65W	TVD Reference:	WELL @ 5038.5ft (RKB - 16.5')
Reference Site:	Meehl 01N-65W-24 Pad Sec.24-T01N-R65W	MD Reference:	WELL @ 5038.5ft (RKB - 16.5')
Site Error:	0.0ft	North Reference:	True
Reference Well:	Meehl 01N-65W-24-7N	Survey Calculation Method:	Minimum Curvature
Well Error:	0.0ft	Output errors are at	2.00 sigma
Reference Wellbore	Wellbore #1	Database:	landmark
Reference Design:	Plan #1 (10-17-14)	Offset TVD Reference:	Offset Datum

Offset Design												Offset Site Error:	0.0 ft
Survey Program: 0-MWD												Offset Well Error:	0.0 ft
Reference		Offset		Semi Major Axis			Distance						
Measured Depth (ft)	Vertical Depth (ft)	Measured Depth (ft)	Vertical Depth (ft)	Reference (ft)	Offset (ft)	Highside Toolface (°)	Offset Wellbore Centre +N/-S (ft)	+E/-W (ft)	Between Centres (ft)	Between Ellipses (ft)	Minimum Separation (ft)	Separation Factor	Warning
5,200.0	5,155.9	5,168.4	5,155.9	14.9	11.5	-90.09	-220.2	-11.5	495.1	471.4	23.66	20.924	
5,300.0	5,255.9	5,268.4	5,255.9	15.1	11.7	-90.09	-220.2	-11.5	495.1	471.0	24.05	20.587	
5,400.0	5,355.9	5,368.4	5,355.9	15.2	11.9	-90.09	-220.2	-11.5	495.1	470.7	24.44	20.260	
5,500.0	5,455.9	5,468.4	5,455.9	15.4	12.1	-90.09	-220.2	-11.5	495.1	470.3	24.83	19.941	
5,600.0	5,555.9	5,568.4	5,555.9	15.6	12.3	-90.09	-220.2	-11.5	495.1	469.9	25.22	19.630	
5,700.0	5,655.9	5,668.4	5,655.9	15.7	12.5	-90.09	-220.2	-11.5	495.1	469.5	25.62	19.328	
5,800.0	5,755.9	5,768.4	5,755.9	15.9	12.7	-90.09	-220.2	-11.5	495.1	469.1	26.01	19.033	
5,900.0	5,855.9	5,868.4	5,855.9	16.1	12.9	-90.09	-220.2	-11.5	495.1	468.7	26.41	18.747	
6,000.0	5,955.9	5,968.4	5,955.9	16.2	13.1	-90.09	-220.2	-11.5	495.1	468.3	26.81	18.467	
6,100.0	6,055.9	6,068.4	6,055.9	16.4	13.3	-90.09	-220.2	-11.5	495.1	467.9	27.21	18.195	
6,200.0	6,155.9	6,168.4	6,155.9	16.6	13.5	-90.09	-220.2	-11.5	495.1	467.5	27.61	17.930	
6,300.0	6,255.9	6,268.4	6,255.9	16.7	13.7	-90.09	-220.2	-11.5	495.1	467.1	28.02	17.671	
6,400.0	6,355.9	6,368.4	6,355.9	16.9	14.0	-90.09	-220.2	-11.5	495.1	466.7	28.42	17.419	
6,500.0	6,455.9	6,468.4	6,455.9	17.1	14.2	-90.09	-220.2	-11.5	495.1	466.3	28.83	17.173	
6,600.0	6,555.9	6,568.4	6,555.9	17.3	14.4	-90.09	-220.2	-11.5	495.1	465.8	29.24	16.933	
6,700.0	6,655.7	6,668.7	6,656.1	17.4	14.6	-90.33	-216.3	-11.5	495.1	465.5	29.60	16.726	
6,800.0	6,753.2	6,769.3	6,754.1	17.5	14.7	-90.31	-194.6	-11.4	495.1	465.3	29.83	16.597	
6,900.0	6,844.8	6,869.8	6,846.1	17.6	14.8	-90.29	-154.5	-11.2	495.1	465.1	29.95	16.529	
7,000.0	6,927.2	6,970.2	6,928.6	17.6	14.8	-90.25	-97.5	-11.0	495.1	465.0	30.07	16.467	
7,100.0	6,997.2	7,070.6	6,998.6	17.6	14.9	-90.21	-25.8	-10.7	495.1	464.8	30.29	16.345	
7,200.0	7,052.4	7,170.9	7,053.6	17.6	15.2	-90.16	57.9	-10.3	495.1	464.3	30.75	16.101	
7,300.0	7,090.7	7,271.1	7,091.6	17.7	15.6	-90.10	150.5	-9.9	495.1	463.5	31.53	15.701	
7,400.0	7,110.8	7,371.2	7,111.1	17.9	16.2	-90.04	248.5	-9.5	495.1	462.4	32.67	15.151	
7,500.0	7,113.5	7,471.2	7,113.5	18.4	16.9	-90.00	348.5	-9.1	495.1	460.9	34.17	14.490	
7,600.0	7,113.0	7,571.2	7,113.0	19.2	17.9	-90.00	448.5	-8.7	495.1	459.1	36.00	13.753	
7,700.0	7,112.5	7,671.2	7,112.5	20.2	18.9	-90.00	548.5	-8.3	495.1	457.0	38.12	12.988	
7,800.0	7,112.0	7,771.2	7,112.0	21.3	20.1	-90.00	648.4	-7.8	495.1	454.6	40.49	12.226	
7,900.0	7,111.6	7,871.2	7,111.6	22.5	21.4	-90.00	748.4	-7.4	495.1	452.0	43.08	11.493	
8,000.0	7,111.1	7,971.2	7,111.1	23.9	22.8	-90.00	848.4	-7.0	495.1	449.2	45.83	10.802	
8,100.0	7,110.6	8,071.2	7,110.6	25.3	24.3	-90.00	948.4	-6.6	495.1	446.3	48.74	10.158	
8,200.0	7,110.2	8,171.2	7,110.2	26.7	25.8	-90.00	1,048.4	-6.2	495.1	443.3	51.76	9.565	
8,300.0	7,109.7	8,271.2	7,109.7	28.2	27.4	-90.00	1,148.4	-5.7	495.1	440.2	54.88	9.020	
8,400.0	7,109.2	8,371.2	7,109.2	29.8	29.0	-90.00	1,248.4	-5.3	495.1	437.0	58.09	8.522	
8,500.0	7,108.7	8,471.2	7,108.7	31.4	30.6	-90.00	1,348.4	-4.9	495.1	433.7	61.37	8.067	
8,600.0	7,108.3	8,571.2	7,108.3	33.0	32.3	-90.00	1,448.4	-4.5	495.1	430.4	64.71	7.650	
8,700.0	7,107.8	8,671.2	7,107.8	34.7	34.0	-90.00	1,548.4	-4.1	495.1	427.0	68.10	7.269	
8,800.0	7,107.3	8,771.2	7,107.3	36.4	35.7	-90.00	1,648.4	-3.6	495.1	423.5	71.54	6.920	
8,900.0	7,106.9	8,871.2	7,106.9	38.1	37.5	-90.00	1,748.4	-3.2	495.1	420.0	75.01	6.600	
9,000.0	7,106.4	8,971.2	7,106.4	39.8	39.2	-90.00	1,848.4	-2.8	495.1	416.5	78.52	6.305	
9,100.0	7,105.9	9,071.2	7,105.9	41.6	41.0	-90.00	1,948.4	-2.4	495.1	413.0	82.05	6.033	
9,200.0	7,105.4	9,171.2	7,105.4	43.3	42.8	-90.00	2,048.4	-2.0	495.1	409.4	85.61	5.783	
9,300.0	7,105.0	9,271.2	7,105.0	45.1	44.6	-90.00	2,148.4	-1.5	495.1	405.9	89.19	5.550	
9,400.0	7,104.5	9,371.2	7,104.5	46.9	46.4	-90.00	2,248.4	-1.1	495.1	402.3	92.80	5.335	
9,500.0	7,104.0	9,471.2	7,104.0	48.7	48.2	-90.00	2,348.4	-0.7	495.1	398.6	96.42	5.135	
9,600.0	7,103.6	9,571.2	7,103.6	50.5	50.0	-90.00	2,448.4	-0.3	495.1	395.0	100.05	4.948	
9,700.0	7,103.1	9,671.2	7,103.1	52.3	51.9	-90.00	2,548.4	0.1	495.1	391.4	103.70	4.774	
9,800.0	7,102.6	9,771.2	7,102.6	54.1	53.7	-90.00	2,648.4	0.6	495.0	387.7	107.36	4.611	
9,900.0	7,102.1	9,871.2	7,102.1	55.9	55.5	-90.00	2,748.4	1.0	495.0	384.0	111.03	4.459	
10,000.0	7,101.7	9,971.2	7,101.7	57.7	57.4	-90.00	2,848.4	1.4	495.0	380.3	114.72	4.315	
10,100.0	7,101.2	10,071.2	7,101.2	59.6	59.2	-90.00	2,948.4	1.8	495.0	376.6	118.41	4.181	
10,200.0	7,100.7	10,171.2	7,100.7	61.4	61.1	-90.00	3,048.4	2.2	495.0	372.9	122.11	4.054	
10,300.0	7,100.3	10,271.2	7,100.3	63.3	62.9	-90.00	3,148.4	2.6	495.0	369.2	125.82	3.935	

CC - Min centre to center distance or convergent point, SF - min separation factor, ES - min ellipse separation

Company:	Verdad Oil & Gas Corporation	Local Co-ordinate Reference:	Well Meehl 01N-65W-24-7N
Project:	SEC.24-T1N-R65W	TVD Reference:	WELL @ 5038.5ft (RKB - 16.5')
Reference Site:	Meehl 01N-65W-24 Pad Sec.24-T01N-R65W	MD Reference:	WELL @ 5038.5ft (RKB - 16.5')
Site Error:	0.0ft	North Reference:	True
Reference Well:	Meehl 01N-65W-24-7N	Survey Calculation Method:	Minimum Curvature
Well Error:	0.0ft	Output errors are at	2.00 sigma
Reference Wellbore	Wellbore #1	Database:	landmark
Reference Design:	Plan #1 (10-17-14)	Offset TVD Reference:	Offset Datum

Offset Design Meehl 01N-65W-24 Pad Sec.24-T01N-R65W - Meehl 01N-65W-24-4N - Wellbore #1 - Plan #1 (10-17-1												Offset Site Error:	0.0 ft
Survey Program: 0-MWD												Offset Well Error:	0.0 ft
Reference		Offset		Semi Major Axis			Distance						
Measured Depth (ft)	Vertical Depth (ft)	Measured Depth (ft)	Vertical Depth (ft)	Reference (ft)	Offset (ft)	Highside Toolface (°)	Offset Wellbore Centre +N/-S (ft)	+E/-W (ft)	Between Centres (ft)	Between Ellipses (ft)	Minimum Separation (ft)	Separation Factor	Warning
10,400.0	7,099.8	10,371.2	7,099.8	65.1	64.8	-90.00	3,248.4	3.1	495.0	365.5	129.53	3.822	
10,500.0	7,099.3	10,471.2	7,099.3	67.0	66.7	-90.00	3,348.4	3.5	495.0	361.8	133.25	3.715	
10,600.0	7,098.9	10,571.2	7,098.8	68.8	68.5	-90.00	3,448.4	3.9	495.0	358.1	136.98	3.614	
10,700.0	7,098.4	10,671.2	7,098.4	70.7	70.4	-90.00	3,548.4	4.3	495.0	354.3	140.71	3.518	
10,800.0	7,097.9	10,771.2	7,097.9	72.5	72.3	-90.00	3,648.4	4.7	495.0	350.6	144.45	3.427	
10,900.0	7,097.4	10,871.2	7,097.4	74.4	74.1	-90.00	3,748.4	5.2	495.0	346.8	148.19	3.340	
11,000.0	7,097.0	10,971.2	7,097.0	76.2	76.0	-90.00	3,848.4	5.6	495.0	343.1	151.94	3.258	
11,100.0	7,096.5	11,071.2	7,096.5	78.1	77.9	-90.00	3,948.4	6.0	495.0	339.3	155.69	3.180	
11,200.0	7,096.0	11,171.2	7,096.0	80.0	79.8	-90.00	4,048.4	6.4	495.0	335.6	159.45	3.105	
11,300.0	7,095.6	11,271.2	7,095.6	81.9	81.6	-90.00	4,148.4	6.8	495.0	331.8	163.20	3.033	
11,400.0	7,095.1	11,371.2	7,095.1	83.7	83.5	-90.00	4,248.4	7.3	495.0	328.1	166.96	2.965	
11,500.0	7,094.6	11,471.2	7,094.6	85.6	85.4	-90.00	4,348.4	7.7	495.0	324.3	170.73	2.900	
11,600.0	7,094.1	11,571.2	7,094.1	87.5	87.3	-90.00	4,448.4	8.1	495.0	320.5	174.49	2.837	
11,700.0	7,093.7	11,671.2	7,093.7	89.4	89.2	-90.00	4,548.4	8.5	495.0	316.8	178.26	2.777	
11,735.4	7,093.5	11,706.7	7,093.5	90.0	89.8	-90.00	4,583.8	8.7	495.0	315.4	179.60	2.756 SF	

Company:	Verdad Oil & Gas Corporation	Local Co-ordinate Reference:	Well Meehl 01N-65W-24-7N
Project:	SEC.24-T1N-R65W	TVD Reference:	WELL @ 5038.5ft (RKB - 16.5')
Reference Site:	Meehl 01N-65W-24 Pad Sec.24-T01N-R65W	MD Reference:	WELL @ 5038.5ft (RKB - 16.5')
Site Error:	0.0ft	North Reference:	True
Reference Well:	Meehl 01N-65W-24-7N	Survey Calculation Method:	Minimum Curvature
Well Error:	0.0ft	Output errors are at	2.00 sigma
Reference Wellbore	Wellbore #1	Database:	landmark
Reference Design:	Plan #1 (10-17-14)	Offset TVD Reference:	Offset Datum

Offset Design												Offset Site Error:	0.0 ft
Survey Program: 0-MWD												Offset Well Error:	0.0 ft
Reference		Offset		Semi Major Axis			Distance						
Measured Depth (ft)	Vertical Depth (ft)	Measured Depth (ft)	Vertical Depth (ft)	Reference (ft)	Offset (ft)	Highside Toolface (°)	Offset Wellbore Centre +N/-S (ft)	+E/-W (ft)	Between Centres (ft)	Between Ellipses (ft)	Minimum Separation (ft)	Separation Factor	Warning
0.0	0.0	0.0	0.0	0.0	0.0	-89.98	0.0	-30.0	30.0				
100.0	100.0	100.0	100.0	0.1	0.1	-89.98	0.0	-30.0	30.0	29.7	0.22	133.313	
200.0	200.0	200.0	200.0	0.3	0.3	-89.98	0.0	-30.0	30.0	29.3	0.67	44.438	
300.0	300.0	300.0	300.0	0.6	0.6	-89.98	0.0	-30.0	30.0	28.8	1.12	26.663	
400.0	400.0	400.0	400.0	0.8	0.8	-89.98	0.0	-30.0	30.0	28.4	1.57	19.045	
500.0	500.0	500.0	500.0	1.0	1.0	-89.98	0.0	-30.0	30.0	27.9	2.02	14.813	
600.0	600.0	600.0	600.0	1.2	1.2	-89.98	0.0	-30.0	30.0	27.5	2.47	12.119	
700.0	700.0	700.0	700.0	1.5	1.5	-89.98	0.0	-30.0	30.0	27.0	2.92	10.255	
800.0	800.0	800.0	800.0	1.7	1.7	-89.98	0.0	-30.0	30.0	26.6	3.37	8.888	
900.0	900.0	900.0	900.0	1.9	1.9	-89.98	0.0	-30.0	30.0	26.1	3.82	7.842	
1,000.0	1,000.0	1,000.0	1,000.0	2.1	2.1	-89.98	0.0	-30.0	30.0	25.7	4.27	7.016	
1,100.0	1,100.0	1,100.0	1,100.0	2.4	2.4	-89.98	0.0	-30.0	30.0	25.2	4.72	6.348	
1,200.0	1,200.0	1,200.0	1,200.0	2.6	2.6	-89.98	0.0	-30.0	30.0	24.8	5.17	5.796 CC, ES	
1,300.0	1,300.0	1,300.0	1,300.0	2.8	2.8	156.92	0.0	-30.0	31.6	26.0	5.60	5.638	
1,400.0	1,399.8	1,399.8	1,399.8	3.0	3.0	160.11	0.0	-30.0	36.4	30.4	6.01	6.067	
1,500.0	1,499.5	1,499.5	1,499.5	3.2	3.3	163.86	0.0	-30.0	44.7	38.3	6.41	6.976	
1,600.0	1,598.7	1,598.7	1,598.7	3.4	3.5	167.24	0.0	-30.0	56.5	49.7	6.82	8.295	
1,700.0	1,697.5	1,697.5	1,697.5	3.7	3.7	169.94	0.0	-30.0	71.9	64.7	7.22	9.960	
1,800.0	1,795.9	1,795.9	1,795.9	4.0	3.9	171.90	0.0	-30.0	89.1	81.5	7.65	11.657	
1,900.0	1,894.4	1,894.4	1,894.4	4.3	4.1	173.22	0.0	-30.0	106.4	98.4	8.08	13.171	
2,000.0	1,992.9	1,992.9	1,992.9	4.6	4.4	174.18	0.0	-30.0	123.8	115.3	8.52	14.528	
2,100.0	2,091.3	2,095.3	2,095.3	4.9	4.6	174.58	-1.2	-28.9	139.9	130.9	8.95	15.632	
2,200.0	2,189.8	2,199.0	2,198.8	5.3	4.8	174.19	-5.3	-25.5	152.9	143.5	9.36	16.342	
2,300.0	2,288.3	2,303.3	2,302.8	5.6	5.0	173.15	-12.3	-19.7	162.9	153.1	9.78	16.658	
2,400.0	2,386.7	2,406.0	2,404.7	6.0	5.2	171.62	-21.8	-11.8	170.1	159.9	10.21	16.658	
2,500.0	2,485.2	2,505.7	2,503.5	6.4	5.4	170.13	-31.6	-3.7	177.0	166.3	10.66	16.601	
2,600.0	2,583.7	2,605.3	2,602.4	6.7	5.6	168.75	-41.3	4.5	183.9	172.8	11.12	16.538	
2,700.0	2,682.1	2,705.0	2,701.2	7.1	5.8	167.48	-51.1	12.6	191.0	179.4	11.60	16.470	
2,800.0	2,780.6	2,804.6	2,800.1	7.5	6.1	166.29	-60.8	20.7	198.1	186.0	12.08	16.398	
2,900.0	2,879.0	2,904.3	2,898.9	7.9	6.3	165.19	-70.6	28.8	205.3	192.8	12.58	16.322	
3,000.0	2,977.5	3,004.0	2,997.8	8.2	6.6	164.16	-80.3	36.9	212.6	199.5	13.09	16.244	
3,100.0	3,076.0	3,103.6	3,096.6	8.6	6.9	163.20	-90.0	45.0	220.0	206.4	13.61	16.164	
3,200.0	3,174.4	3,203.3	3,195.5	9.0	7.1	162.31	-99.8	53.2	227.4	213.2	14.14	16.084	
3,300.0	3,272.9	3,303.0	3,294.4	9.4	7.4	161.47	-109.5	61.3	234.8	220.2	14.67	16.003	
3,400.0	3,371.4	3,402.6	3,393.2	9.8	7.7	160.68	-119.3	69.4	242.4	227.1	15.22	15.923	
3,500.0	3,469.8	3,502.3	3,492.1	10.2	8.0	159.94	-129.0	77.5	249.9	234.1	15.77	15.843	
3,600.0	3,568.3	3,602.0	3,590.9	10.6	8.3	159.24	-138.8	85.6	257.5	241.2	16.33	15.765	
3,700.0	3,666.8	3,701.6	3,689.8	11.0	8.6	158.59	-148.5	93.7	265.1	248.2	16.90	15.688	
3,800.0	3,765.2	3,801.3	3,788.6	11.4	8.9	157.97	-158.3	101.8	272.8	255.3	17.47	15.613	
3,900.0	3,863.7	3,901.0	3,887.5	11.8	9.2	157.38	-168.0	110.0	280.5	262.4	18.05	15.539	
4,000.0	3,962.2	4,000.6	3,986.3	12.2	9.5	156.82	-177.7	118.1	288.2	269.5	18.63	15.468	
4,100.0	4,060.6	4,100.3	4,085.2	12.6	9.8	156.30	-187.5	126.2	295.9	276.7	19.22	15.398	
4,200.0	4,159.1	4,199.9	4,184.0	13.0	10.1	155.80	-197.2	134.3	303.7	283.9	19.81	15.330	
4,300.0	4,257.7	4,296.5	4,279.9	13.3	10.4	155.38	-206.4	142.0	311.2	290.8	20.38	15.265	
4,400.0	4,356.7	4,389.8	4,372.7	13.6	10.6	155.16	-213.2	147.7	317.6	296.7	20.85	15.230	
4,500.0	4,456.2	4,483.0	4,465.8	13.8	10.8	155.11	-217.8	151.4	322.9	301.6	21.26	15.184	
4,600.0	4,555.9	4,576.2	4,558.9	14.0	11.0	155.22	-220.0	153.2	327.1	305.5	21.62	15.128	
4,700.0	4,655.9	4,673.2	4,655.9	14.2	11.2	155.43	-220.2	153.4	329.9	307.9	21.94	15.034	
4,800.0	4,755.9	4,773.2	4,755.9	14.3	11.3	-90.14	-220.2	153.4	330.2	307.9	22.31	14.801	
4,900.0	4,855.9	4,873.2	4,855.9	14.5	11.5	-90.14	-220.2	153.4	330.2	307.5	22.68	14.558	
5,000.0	4,955.9	4,973.2	4,955.9	14.6	11.7	-90.14	-220.2	153.4	330.2	307.1	23.05	14.321	
5,100.0	5,055.9	5,073.2	5,055.9	14.8	11.9	-90.14	-220.2	153.4	330.2	306.7	23.43	14.090	

CC - Min centre to center distance or convergent point, SF - min separation factor, ES - min ellipse separation

Company:	Verdad Oil & Gas Corporation	Local Co-ordinate Reference:	Well Meehl 01N-65W-24-7N
Project:	SEC.24-T1N-R65W	TVD Reference:	WELL @ 5038.5ft (RKB - 16.5')
Reference Site:	Meehl 01N-65W-24 Pad Sec.24-T01N-R65W	MD Reference:	WELL @ 5038.5ft (RKB - 16.5')
Site Error:	0.0ft	North Reference:	True
Reference Well:	Meehl 01N-65W-24-7N	Survey Calculation Method:	Minimum Curvature
Well Error:	0.0ft	Output errors are at	2.00 sigma
Reference Wellbore	Wellbore #1	Database:	landmark
Reference Design:	Plan #1 (10-17-14)	Offset TVD Reference:	Offset Datum

Offset Design		Meehl 01N-65W-24 Pad Sec.24-T01N-R65W - Meehl 01N-65W-24-5C - Wellbore #1 - Plan #1 (10-17-1										Offset Site Error:		0.0 ft
Survey Program: 0-MWD												Offset Well Error:		0.0 ft
Reference		Offset		Semi Major Axis		Distance							Warning	
Measured Depth (ft)	Vertical Depth (ft)	Measured Depth (ft)	Vertical Depth (ft)	Reference (ft)	Offset (ft)	Highside Toolface (°)	Offset Wellbore Centre +N/-S (ft)	+E/-W (ft)	Between Centres (ft)	Between Ellipses (ft)	Minimum Separation (ft)	Separation Factor		
5,200.0	5,155.9	5,173.2	5,155.9	14.9	12.1	-90.14	-220.2	153.4	330.2	306.4	23.81	13.865		
5,300.0	5,255.9	5,273.2	5,255.9	15.1	12.3	-90.14	-220.2	153.4	330.2	306.0	24.19	13.646		
5,400.0	5,355.9	5,373.2	5,355.9	15.2	12.5	-90.14	-220.2	153.4	330.2	305.6	24.58	13.433		
5,500.0	5,455.9	5,473.2	5,455.9	15.4	12.7	-90.14	-220.2	153.4	330.2	305.2	24.97	13.224		
5,600.0	5,555.9	5,573.2	5,555.9	15.6	12.9	-90.14	-220.2	153.4	330.2	304.8	25.36	13.022		
5,700.0	5,655.9	5,673.2	5,655.9	15.7	13.1	-90.14	-220.2	153.4	330.2	304.4	25.75	12.824		
5,800.0	5,755.9	5,773.2	5,755.9	15.9	13.3	-90.14	-220.2	153.4	330.2	304.0	26.14	12.631		
5,900.0	5,855.9	5,873.2	5,855.9	16.1	13.5	-90.14	-220.2	153.4	330.2	303.6	26.53	12.443		
6,000.0	5,955.9	5,973.2	5,955.9	16.2	13.6	-90.14	-220.2	153.4	330.2	303.2	26.93	12.260		
6,100.0	6,055.9	6,073.2	6,055.9	16.4	13.8	-90.14	-220.2	153.4	330.2	302.8	27.33	12.082		
6,200.0	6,155.9	6,173.2	6,155.9	16.6	14.0	-90.14	-220.2	153.4	330.2	302.4	27.73	11.908		
6,300.0	6,255.9	6,273.2	6,255.9	16.7	14.2	-90.14	-220.2	153.4	330.2	302.0	28.13	11.738		
6,400.0	6,355.9	6,373.2	6,355.9	16.9	14.4	-90.14	-220.2	153.4	330.2	301.6	28.53	11.572		
6,500.0	6,455.9	6,473.2	6,455.9	17.1	14.7	-90.14	-220.2	153.4	330.2	301.2	28.93	11.411		
6,600.0	6,555.9	6,573.2	6,555.9	17.3	14.9	-90.14	-220.2	153.4	330.2	300.8	29.34	11.253		
6,635.9	6,591.8	6,609.1	6,591.8	17.3	14.9	-90.51	-220.2	153.4	330.2	300.7	29.47	11.202		
6,700.0	6,655.7	6,673.0	6,655.7	17.4	15.1	-91.03	-220.2	153.4	330.2	300.5	29.75	11.098		
6,800.0	6,753.2	6,770.5	6,753.2	17.5	15.3	-94.53	-220.2	153.4	331.3	301.0	30.27	10.947		
6,900.0	6,844.8	6,869.6	6,852.2	17.6	15.4	-100.20	-216.8	153.5	336.3	305.6	30.73	10.946		
7,000.0	6,927.2	6,980.1	6,959.8	17.6	15.6	-105.99	-192.6	153.6	345.4	314.6	30.84	11.202		
7,100.0	6,997.2	7,101.9	7,069.5	17.6	15.7	-111.29	-140.5	153.8	357.0	326.5	30.52	11.699		
7,200.0	7,052.4	7,236.6	7,173.2	17.6	15.7	-115.80	-54.9	154.1	369.2	339.2	29.99	12.309		
7,300.0	7,090.7	7,384.4	7,257.5	17.7	15.8	-119.15	65.8	154.7	379.3	349.6	29.75	12.749		
7,400.0	7,110.8	7,542.4	7,306.4	17.9	16.4	-120.95	215.4	155.3	385.1	354.7	30.42	12.658		
7,500.0	7,113.5	7,675.9	7,313.3	18.4	17.4	-121.19	348.5	155.9	385.9	353.9	31.97	12.069		
7,600.0	7,113.0	7,775.9	7,312.9	19.2	18.3	-121.20	448.5	156.3	385.9	352.3	33.60	11.488		
7,700.0	7,112.5	7,875.9	7,312.6	20.2	19.4	-121.22	548.5	156.7	386.0	350.5	35.46	10.886		
7,800.0	7,112.0	7,975.9	7,312.2	21.3	20.6	-121.23	648.5	157.1	386.1	348.5	37.53	10.286		
7,900.0	7,111.6	8,075.9	7,311.9	22.5	21.9	-121.25	748.5	157.6	386.1	346.3	39.78	9.706		
8,000.0	7,111.1	8,175.9	7,311.5	23.9	23.2	-121.27	848.5	158.0	386.2	344.0	42.17	9.157		
8,100.0	7,110.6	8,275.9	7,311.2	25.3	24.7	-121.28	948.5	158.4	386.2	341.5	44.69	8.642		
8,200.0	7,110.2	8,375.9	7,310.8	26.7	26.2	-121.30	1,048.5	158.8	386.3	339.0	47.31	8.164		
8,300.0	7,109.7	8,475.9	7,310.5	28.2	27.7	-121.31	1,148.5	159.3	386.3	336.3	50.02	7.723		
8,400.0	7,109.2	8,575.9	7,310.1	29.8	29.3	-121.33	1,248.5	159.7	386.4	333.6	52.81	7.317		
8,500.0	7,108.7	8,675.9	7,309.8	31.4	30.9	-121.35	1,348.5	160.1	386.5	330.8	55.65	6.944		
8,600.0	7,108.3	8,775.9	7,309.4	33.0	32.6	-121.36	1,448.5	160.5	386.5	328.0	58.55	6.602		
8,700.0	7,107.8	8,875.9	7,309.1	34.7	34.3	-121.38	1,548.5	161.0	386.6	325.1	61.49	6.287		
8,800.0	7,107.3	8,975.9	7,308.7	36.4	36.0	-121.39	1,648.5	161.4	386.6	322.2	64.48	5.997		
8,900.0	7,106.9	9,075.9	7,308.4	38.1	37.7	-121.41	1,748.5	161.8	386.7	319.2	67.49	5.730		
9,000.0	7,106.4	9,175.9	7,308.0	39.8	39.5	-121.43	1,848.5	162.2	386.8	316.2	70.54	5.483		
9,100.0	7,105.9	9,275.9	7,307.7	41.6	41.2	-121.44	1,948.5	162.7	386.8	313.2	73.61	5.255		
9,200.0	7,105.4	9,375.9	7,307.3	43.3	43.0	-121.46	2,048.5	163.1	386.9	310.2	76.70	5.044		
9,300.0	7,105.0	9,475.9	7,307.0	45.1	44.8	-121.47	2,148.5	163.5	386.9	307.1	79.81	4.848		
9,400.0	7,104.5	9,575.9	7,306.6	46.9	46.6	-121.49	2,248.4	163.9	387.0	304.0	82.94	4.666		
9,500.0	7,104.0	9,675.9	7,306.3	48.7	48.4	-121.51	2,348.4	164.4	387.0	301.0	86.09	4.496		
9,600.0	7,103.6	9,775.9	7,306.0	50.5	50.2	-121.52	2,448.4	164.8	387.1	297.9	89.25	4.337		
9,700.0	7,103.1	9,875.9	7,305.6	52.3	52.0	-121.54	2,548.4	165.2	387.2	294.7	92.42	4.189		
9,800.0	7,102.6	9,975.9	7,305.3	54.1	53.8	-121.55	2,648.4	165.6	387.2	291.6	95.60	4.050		
9,900.0	7,102.1	10,075.9	7,304.9	55.9	55.7	-121.57	2,748.4	166.1	387.3	288.5	98.79	3.920		
10,000.0	7,101.7	10,175.9	7,304.6	57.7	57.5	-121.59	2,848.4	166.5	387.3	285.3	101.99	3.798		
10,100.0	7,101.2	10,275.9	7,304.2	59.6	59.3	-121.60	2,948.4	166.9	387.4	282.2	105.20	3.682		
10,200.0	7,100.7	10,375.9	7,303.9	61.4	61.2	-121.62	3,048.4	167.3	387.4	279.0	108.41	3.574		

CC - Min centre to center distance or convergent point, SF - min separation factor, ES - min ellipse separation

Company:	Verdad Oil & Gas Corporation	Local Co-ordinate Reference:	Well Meehl 01N-65W-24-7N
Project:	SEC.24-T1N-R65W	TVD Reference:	WELL @ 5038.5ft (RKB - 16.5')
Reference Site:	Meehl 01N-65W-24 Pad Sec.24-T01N-R65W	MD Reference:	WELL @ 5038.5ft (RKB - 16.5')
Site Error:	0.0ft	North Reference:	True
Reference Well:	Meehl 01N-65W-24-7N	Survey Calculation Method:	Minimum Curvature
Well Error:	0.0ft	Output errors are at	2.00 sigma
Reference Wellbore	Wellbore #1	Database:	landmark
Reference Design:	Plan #1 (10-17-14)	Offset TVD Reference:	Offset Datum

Offset Design Meehl 01N-65W-24 Pad Sec.24-T01N-R65W - Meehl 01N-65W-24-5C - Wellbore #1 - Plan #1 (10-17-1													Offset Site Error:	0.0 ft
Survey Program: 0-MWD													Offset Well Error:	0.0 ft
Reference		Offset		Semi Major Axis			Distance							Warning
Measured Depth	Vertical Depth	Measured Depth	Vertical Depth	Reference	Offset	Highside Toolface	Offset Wellbore Centre		Between Centres	Between Ellipses	Minimum Separation	Separation Factor		
(ft)	(ft)	(ft)	(ft)	(ft)	(ft)	(°)	+N/-S (ft)	+E/-W (ft)	(ft)	(ft)	(ft)			
10,300.0	7,100.3	10,475.9	7,303.5	63.3	63.0	-121.63	3,148.4	167.8	387.5	275.9	111.63	3.471		
10,400.0	7,099.8	10,575.9	7,303.2	65.1	64.9	-121.65	3,248.4	168.2	387.6	272.7	114.86	3.374		
10,500.0	7,099.3	10,675.9	7,302.8	67.0	66.8	-121.67	3,348.4	168.6	387.6	269.5	118.09	3.282		
10,600.0	7,098.9	10,775.9	7,302.5	68.8	68.6	-121.68	3,448.4	169.0	387.7	266.4	121.33	3.195		
10,700.0	7,098.4	10,875.9	7,302.1	70.7	70.5	-121.70	3,548.4	169.5	387.7	263.2	124.57	3.113		
10,800.0	7,097.9	10,975.9	7,301.8	72.5	72.3	-121.71	3,648.4	169.9	387.8	260.0	127.81	3.034		
10,900.0	7,097.4	11,075.9	7,301.4	74.4	74.2	-121.73	3,748.4	170.3	387.9	256.8	131.06	2.959		
11,000.0	7,097.0	11,175.9	7,301.1	76.2	76.1	-121.75	3,848.4	170.7	387.9	253.6	134.31	2.888		
11,100.0	7,096.5	11,275.9	7,300.7	78.1	78.0	-121.76	3,948.4	171.2	388.0	250.4	137.57	2.820		
11,200.0	7,096.0	11,375.9	7,300.4	80.0	79.8	-121.78	4,048.4	171.6	388.0	247.2	140.82	2.755		
11,300.0	7,095.6	11,475.9	7,300.0	81.9	81.7	-121.79	4,148.4	172.0	388.1	244.0	144.08	2.694		
11,400.0	7,095.1	11,575.9	7,299.7	83.7	83.6	-121.81	4,248.4	172.4	388.2	240.8	147.34	2.634		
11,500.0	7,094.6	11,675.9	7,299.3	85.6	85.5	-121.82	4,348.4	172.9	388.2	237.6	150.61	2.578		
11,600.0	7,094.1	11,775.9	7,299.0	87.5	87.3	-121.84	4,448.4	173.3	388.3	234.4	153.87	2.523		
11,700.0	7,093.7	11,875.9	7,298.6	89.4	89.2	-121.86	4,548.4	173.7	388.3	231.2	157.14	2.471		
11,712.4	7,093.6	11,888.3	7,298.6	89.6	89.5	-121.86	4,560.8	173.8	388.3	230.8	157.54	2.465		
11,735.4	7,093.5	11,910.2	7,298.5	90.0	89.8	-121.86	4,582.8	173.9	388.3	230.1	158.24	2.454 SF		

Company:	Verdad Oil & Gas Corporation	Local Co-ordinate Reference:	Well Meehl 01N-65W-24-7N
Project:	SEC.24-T1N-R65W	TVD Reference:	WELL @ 5038.5ft (RKB - 16.5')
Reference Site:	Meehl 01N-65W-24 Pad Sec.24-T01N-R65W	MD Reference:	WELL @ 5038.5ft (RKB - 16.5')
Site Error:	0.0ft	North Reference:	True
Reference Well:	Meehl 01N-65W-24-7N	Survey Calculation Method:	Minimum Curvature
Well Error:	0.0ft	Output errors are at	2.00 sigma
Reference Wellbore	Wellbore #1	Database:	landmark
Reference Design:	Plan #1 (10-17-14)	Offset TVD Reference:	Offset Datum

Offset Design													Offset Site Error:	0.0 ft
Survey Program: 0-MWD													Offset Well Error:	0.0 ft
Reference		Offset		Semi Major Axis			Distance							Warning
Measured Depth (ft)	Vertical Depth (ft)	Measured Depth (ft)	Vertical Depth (ft)	Reference (ft)	Offset (ft)	Highside Toolface (°)	Offset Wellbore Centre +N/-S (ft)	+E/-W (ft)	Between Centres (ft)	Between Ellipses (ft)	Minimum Separation (ft)	Separation Factor		
0.0	0.0	0.0	0.0	0.0	0.0	-90.13	0.0	-15.1	15.1	15.1	0.00	N/A		
100.0	100.0	100.0	100.0	0.1	0.1	-90.13	0.0	-15.1	15.1	14.9	0.22	67.280		
200.0	200.0	200.0	200.0	0.3	0.3	-90.13	0.0	-15.1	15.1	14.4	0.67	22.427		
300.0	300.0	300.0	300.0	0.6	0.6	-90.13	0.0	-15.1	15.1	14.0	1.12	13.456		
400.0	400.0	400.0	400.0	0.8	0.8	-90.13	0.0	-15.1	15.1	13.5	1.57	9.611		
500.0	500.0	500.0	500.0	1.0	1.0	-90.13	0.0	-15.1	15.1	13.1	2.02	7.476		
600.0	600.0	600.0	600.0	1.2	1.2	-90.13	0.0	-15.1	15.1	12.6	2.47	6.116		
700.0	700.0	700.0	700.0	1.5	1.5	-90.13	0.0	-15.1	15.1	12.2	2.92	5.175		
800.0	800.0	800.0	800.0	1.7	1.7	-90.13	0.0	-15.1	15.1	11.8	3.37	4.485		
900.0	900.0	900.0	900.0	1.9	1.9	-90.13	0.0	-15.1	15.1	11.3	3.82	3.958		
1,000.0	1,000.0	1,000.0	1,000.0	2.1	2.1	-90.13	0.0	-15.1	15.1	10.9	4.27	3.541		
1,100.0	1,100.0	1,100.0	1,100.0	2.4	2.4	-90.13	0.0	-15.1	15.1	10.4	4.72	3.204		
1,200.0	1,200.0	1,200.0	1,200.0	2.6	2.6	-90.13	0.0	-15.1	15.1	10.0	5.17	2.925 CC		
1,300.0	1,300.0	1,300.0	1,300.0	2.8	2.8	157.94	0.0	-15.1	16.7	11.1	5.60	2.988		
1,400.0	1,399.8	1,399.8	1,399.8	3.0	3.0	163.12	0.0	-15.1	21.7	15.7	6.01	3.608		
1,500.0	1,499.5	1,500.4	1,500.4	3.2	3.2	166.67	-1.0	-13.7	28.5	22.1	6.39	4.459		
1,600.0	1,598.7	1,601.2	1,601.0	3.4	3.4	167.98	-3.9	-9.2	35.5	28.8	6.75	5.259		
1,700.0	1,697.5	1,702.2	1,701.7	3.7	3.6	168.12	-8.8	-1.8	42.7	35.5	7.12	5.990		
1,800.0	1,795.9	1,802.9	1,801.6	4.0	3.9	167.33	-15.4	8.3	48.6	41.0	7.54	6.447		
1,900.0	1,894.4	1,902.8	1,900.7	4.3	4.1	166.46	-22.4	18.8	53.9	46.0	7.97	6.769		
2,000.0	1,992.9	2,002.6	1,999.8	4.6	4.3	165.74	-29.3	29.4	59.3	50.9	8.41	7.048		
2,100.0	2,091.3	2,102.5	2,098.8	4.9	4.6	165.15	-36.3	39.9	64.6	55.7	8.86	7.290		
2,200.0	2,189.8	2,202.4	2,197.9	5.3	4.9	164.64	-43.2	50.4	70.0	60.6	9.33	7.502		
2,300.0	2,288.3	2,302.2	2,296.9	5.6	5.1	164.21	-50.1	61.0	75.3	65.5	9.80	7.686		
2,400.0	2,386.7	2,402.1	2,396.0	6.0	5.4	163.83	-57.1	71.5	80.7	70.4	10.28	7.849		
2,500.0	2,485.2	2,501.9	2,495.0	6.4	5.7	163.50	-64.0	82.1	86.1	75.3	10.77	7.992		
2,600.0	2,583.7	2,601.8	2,594.1	6.7	6.0	163.21	-71.0	92.6	91.4	80.2	11.26	8.118		
2,700.0	2,682.1	2,701.6	2,693.1	7.1	6.3	162.95	-77.9	103.2	96.8	85.0	11.76	8.231		
2,800.0	2,780.6	2,801.5	2,792.2	7.5	6.6	162.72	-84.9	113.7	102.2	89.9	12.27	8.331		
2,900.0	2,879.0	2,901.3	2,891.2	7.9	6.9	162.52	-91.8	124.2	107.6	94.8	12.77	8.421		
3,000.0	2,977.5	3,001.2	2,990.3	8.2	7.2	162.33	-98.7	134.8	112.9	99.7	13.28	8.502		
3,100.0	3,076.0	3,101.0	3,089.3	8.6	7.5	162.16	-105.7	145.3	118.3	104.5	13.80	8.575		
3,200.0	3,174.4	3,200.9	3,188.4	9.0	7.8	162.00	-112.6	155.9	123.7	109.4	14.32	8.641		
3,300.0	3,272.9	3,300.8	3,287.4	9.4	8.1	161.86	-119.6	166.4	129.1	114.2	14.84	8.700		
3,400.0	3,371.4	3,400.6	3,386.5	9.8	8.4	161.73	-126.5	176.9	134.5	119.1	15.36	8.755		
3,500.0	3,469.8	3,500.5	3,485.6	10.2	8.8	161.60	-133.4	187.5	139.8	124.0	15.88	8.804		
3,600.0	3,568.3	3,600.3	3,584.6	10.6	9.1	161.49	-140.4	198.0	145.2	128.8	16.41	8.850		
3,700.0	3,666.8	3,700.2	3,683.7	11.0	9.4	161.39	-147.3	208.6	150.6	133.7	16.94	8.892		
3,800.0	3,765.2	3,800.0	3,782.7	11.4	9.7	161.29	-154.3	219.1	156.0	138.5	17.47	8.930		
3,900.0	3,863.7	3,899.9	3,881.8	11.8	10.0	161.20	-161.2	229.7	161.4	143.4	18.00	8.966		
4,000.0	3,962.2	3,999.7	3,980.8	12.2	10.3	161.11	-168.2	240.2	166.8	148.2	18.53	8.998		
4,100.0	4,060.6	4,099.6	4,079.9	12.6	10.7	161.04	-175.1	250.7	172.1	153.1	19.07	9.029		
4,200.0	4,159.1	4,199.4	4,178.9	13.0	11.0	160.96	-182.0	261.3	177.5	157.9	19.60	9.057		
4,300.0	4,257.7	4,299.3	4,278.0	13.3	11.3	160.85	-189.0	271.8	182.4	162.2	20.14	9.053		
4,400.0	4,356.7	4,399.3	4,377.2	13.6	11.6	160.41	-195.9	282.4	184.2	163.5	20.67	8.912		
4,500.0	4,456.2	4,499.2	4,476.3	13.8	11.9	159.58	-202.9	292.9	182.7	161.5	21.19	8.622		
4,600.0	4,555.9	4,597.1	4,573.5	14.0	12.3	158.37	-209.6	303.1	178.3	156.6	21.71	8.210		
4,700.0	4,655.9	4,691.9	4,667.8	14.2	12.5	157.15	-214.7	310.8	173.0	150.8	22.16	7.806		
4,800.0	4,755.9	4,787.0	4,762.6	14.3	12.7	-89.53	-218.0	315.9	167.8	145.2	22.61	7.421		
4,900.0	4,855.9	4,882.3	4,857.9	14.5	12.8	-90.09	-219.7	318.4	165.2	142.2	23.02	7.177		
4,959.6	4,915.5	4,939.9	4,915.5	14.6	12.9	-90.15	-219.8	318.7	164.9	141.7	23.24	7.098		
5,000.0	4,955.9	4,980.3	4,955.9	14.6	13.0	-90.15	-219.8	318.7	164.9	141.5	23.38	7.053		

CC - Min centre to center distance or convergent point, SF - min separation factor, ES - min ellipse separation

Company:	Verdad Oil & Gas Corporation	Local Co-ordinate Reference:	Well Meehl 01N-65W-24-7N
Project:	SEC.24-T1N-R65W	TVD Reference:	WELL @ 5038.5ft (RKB - 16.5')
Reference Site:	Meehl 01N-65W-24 Pad Sec.24-T01N-R65W	MD Reference:	WELL @ 5038.5ft (RKB - 16.5')
Site Error:	0.0ft	North Reference:	True
Reference Well:	Meehl 01N-65W-24-7N	Survey Calculation Method:	Minimum Curvature
Well Error:	0.0ft	Output errors are at	2.00 sigma
Reference Wellbore	Wellbore #1	Database:	landmark
Reference Design:	Plan #1 (10-17-14)	Offset TVD Reference:	Offset Datum

Offset Design												Offset Site Error:	0.0 ft
Survey Program: 0-MWD												Offset Well Error:	0.0 ft
Reference		Offset		Semi Major Axis			Distance						
Measured Depth (ft)	Vertical Depth (ft)	Measured Depth (ft)	Vertical Depth (ft)	Reference (ft)	Offset (ft)	Highside Toolface (°)	Offset Wellbore Centre +N/-S (ft)	+E/-W (ft)	Between Centres (ft)	Between Ellipses (ft)	Minimum Separation (ft)	Separation Factor	Warning
5,100.0	5,055.9	5,080.3	5,055.9	14.8	13.2	-90.15	-219.8	318.7	164.9	141.2	23.75	6.944	
5,200.0	5,155.9	5,180.3	5,155.9	14.9	13.3	-90.15	-219.8	318.7	164.9	140.8	24.12	6.837	
5,300.0	5,255.9	5,280.3	5,255.9	15.1	13.5	-90.15	-219.8	318.7	164.9	140.4	24.49	6.734	
5,400.0	5,355.9	5,380.3	5,355.9	15.2	13.7	-90.15	-219.8	318.7	164.9	140.1	24.87	6.632	
5,500.0	5,455.9	5,480.3	5,455.9	15.4	13.8	-90.15	-219.8	318.7	164.9	139.7	25.24	6.533	
5,600.0	5,555.9	5,580.3	5,555.9	15.6	14.0	-90.15	-219.8	318.7	164.9	139.3	25.62	6.436	
5,700.0	5,655.9	5,680.3	5,655.9	15.7	14.2	-90.15	-219.8	318.7	164.9	138.9	26.01	6.342	
5,800.0	5,755.9	5,780.3	5,755.9	15.9	14.4	-90.15	-219.8	318.7	164.9	138.5	26.39	6.249	
5,900.0	5,855.9	5,880.3	5,855.9	16.1	14.6	-90.15	-219.8	318.7	164.9	138.1	26.78	6.159	
6,000.0	5,955.9	5,980.3	5,955.9	16.2	14.7	-90.15	-219.8	318.7	164.9	137.8	27.16	6.071	
6,100.0	6,055.9	6,080.3	6,055.9	16.4	14.9	-90.15	-219.8	318.7	164.9	137.4	27.55	5.985	
6,200.0	6,155.9	6,180.3	6,155.9	16.6	15.1	-90.15	-219.8	318.7	164.9	137.0	27.95	5.902	
6,300.0	6,255.9	6,280.3	6,255.9	16.7	15.3	-90.15	-219.8	318.7	164.9	136.6	28.34	5.820	
6,400.0	6,355.9	6,380.3	6,355.9	16.9	15.5	-90.15	-219.8	318.7	164.9	136.2	28.73	5.740	
6,500.0	6,455.9	6,480.3	6,455.9	17.1	15.7	-90.15	-219.8	318.7	164.9	135.8	29.13	5.662	
6,600.0	6,555.9	6,580.3	6,555.9	17.3	15.8	-90.15	-219.8	318.7	164.9	135.4	29.53	5.585	
6,700.0	6,655.7	6,680.4	6,655.9	17.4	16.0	-90.39	-216.0	318.7	164.9	135.0	29.88	5.520	
6,800.0	6,753.2	6,780.6	6,753.6	17.5	16.1	-90.37	-194.4	318.8	164.9	134.8	30.10	5.480	
6,900.0	6,844.8	6,880.8	6,845.3	17.6	16.2	-90.34	-154.5	319.0	164.9	134.7	30.21	5.459	
7,000.0	6,927.2	6,981.0	6,927.7	17.6	16.2	-90.30	-97.9	319.2	164.9	134.6	30.32	5.440	
7,100.0	6,997.2	7,081.2	6,997.8	17.6	16.2	-90.25	-26.5	319.5	164.9	134.4	30.53	5.402	
7,200.0	7,052.4	7,181.3	7,052.9	17.6	16.2	-90.18	56.9	319.8	164.9	133.9	30.98	5.324	
7,300.0	7,090.7	7,281.4	7,091.1	17.7	16.3	-90.12	149.3	320.2	164.9	133.2	31.75	5.195	
7,400.0	7,110.8	7,381.4	7,110.9	17.9	16.7	-90.04	247.2	320.6	164.9	132.0	32.88	5.016	
7,500.0	7,113.5	7,481.4	7,113.5	18.4	17.5	-90.00	347.1	321.1	164.9	130.6	34.35	4.801	
7,600.0	7,113.0	7,581.4	7,113.0	19.2	18.4	-90.00	447.1	321.5	164.9	128.8	36.16	4.561	
7,700.0	7,112.5	7,681.4	7,112.5	20.2	19.5	-90.00	547.1	321.9	164.9	126.7	38.27	4.310	
7,800.0	7,112.0	7,781.4	7,112.0	21.3	20.6	-90.00	647.1	322.3	164.9	124.3	40.63	4.060	
7,900.0	7,111.6	7,881.4	7,111.6	22.5	21.9	-90.00	747.1	322.7	164.9	121.7	43.19	3.818	
8,000.0	7,111.1	7,981.4	7,111.1	23.9	23.3	-90.00	847.1	323.1	164.9	119.0	45.94	3.590	
8,100.0	7,110.6	8,081.4	7,110.6	25.3	24.7	-90.00	947.1	323.6	164.9	116.1	48.83	3.377	
8,200.0	7,110.2	8,181.4	7,110.2	26.7	26.2	-90.00	1,047.1	324.0	164.9	113.1	51.84	3.181	
8,300.0	7,109.7	8,281.4	7,109.7	28.2	27.8	-90.00	1,147.1	324.4	164.9	110.0	54.96	3.001	
8,400.0	7,109.2	8,381.4	7,109.2	29.8	29.4	-90.00	1,247.1	324.8	164.9	106.8	58.16	2.836	
8,500.0	7,108.7	8,481.4	7,108.7	31.4	31.0	-90.00	1,347.0	325.2	164.9	103.5	61.43	2.685	
8,600.0	7,108.3	8,581.4	7,108.3	33.0	32.7	-90.00	1,447.0	325.7	164.9	100.2	64.76	2.547	
8,700.0	7,107.8	8,681.4	7,107.8	34.7	34.3	-90.00	1,547.0	326.1	164.9	96.8	68.15	2.420	
8,800.0	7,107.3	8,781.4	7,107.3	36.4	36.0	-90.00	1,647.0	326.5	164.9	93.3	71.58	2.304	
8,900.0	7,106.9	8,881.4	7,106.9	38.1	37.8	-90.00	1,747.0	326.9	164.9	89.9	75.04	2.198	
9,000.0	7,106.4	8,981.4	7,106.4	39.8	39.5	-90.00	1,847.0	327.3	164.9	86.4	78.55	2.100	
9,100.0	7,105.9	9,081.4	7,105.9	41.6	41.3	-90.00	1,947.0	327.8	164.9	82.8	82.08	2.009	
9,200.0	7,105.4	9,181.4	7,105.4	43.3	43.0	-90.00	2,047.0	328.2	164.9	79.3	85.63	1.926	
9,300.0	7,105.0	9,281.4	7,105.0	45.1	44.8	-90.00	2,147.0	328.6	164.9	75.7	89.21	1.849	
9,400.0	7,104.5	9,381.4	7,104.5	46.9	46.6	-90.00	2,247.0	329.0	164.9	72.1	92.81	1.777	
9,500.0	7,104.0	9,481.4	7,104.0	48.7	48.4	-90.00	2,347.0	329.4	164.9	68.5	96.43	1.710	
9,600.0	7,103.6	9,581.4	7,103.6	50.5	50.2	-90.00	2,447.0	329.8	164.9	64.9	100.06	1.648	
9,700.0	7,103.1	9,681.4	7,103.1	52.3	52.1	-90.00	2,547.0	330.3	164.9	61.2	103.70	1.590	
9,800.0	7,102.6	9,781.4	7,102.6	54.1	53.9	-90.00	2,647.0	330.7	164.9	57.6	107.36	1.536	
9,900.0	7,102.1	9,881.4	7,102.1	55.9	55.7	-90.00	2,747.0	331.1	164.9	53.9	111.03	1.485 Level 3	
10,000.0	7,101.7	9,981.4	7,101.7	57.7	57.5	-90.00	2,847.0	331.5	164.9	50.2	114.71	1.438 Level 3	
10,100.0	7,101.2	10,081.4	7,101.2	59.6	59.4	-90.00	2,947.0	331.9	164.9	46.5	118.40	1.393 Level 3	
10,200.0	7,100.7	10,181.4	7,100.7	61.4	61.2	-90.00	3,047.0	332.4	164.9	42.8	122.10	1.351 Level 3	

CC - Min centre to center distance or convergent point, SF - min separation factor, ES - min ellipse separation

Company:	Verdad Oil & Gas Corporation	Local Co-ordinate Reference:	Well Meehl 01N-65W-24-7N
Project:	SEC.24-T1N-R65W	TVD Reference:	WELL @ 5038.5ft (RKB - 16.5')
Reference Site:	Meehl 01N-65W-24 Pad Sec.24-T01N-R65W	MD Reference:	WELL @ 5038.5ft (RKB - 16.5')
Site Error:	0.0ft	North Reference:	True
Reference Well:	Meehl 01N-65W-24-7N	Survey Calculation Method:	Minimum Curvature
Well Error:	0.0ft	Output errors are at	2.00 sigma
Reference Wellbore	Wellbore #1	Database:	landmark
Reference Design:	Plan #1 (10-17-14)	Offset TVD Reference:	Offset Datum

Offset Design Meehl 01N-65W-24 Pad Sec.24-T01N-R65W - Meehl 01N-65W-24-6N - Wellbore #1 - Plan #1 (10-17-1												Offset Site Error:	0.0 ft
Survey Program: 0-MWD												Offset Well Error:	0.0 ft
Reference		Offset		Semi Major Axis			Distance						
Measured Depth (ft)	Vertical Depth (ft)	Measured Depth (ft)	Vertical Depth (ft)	Reference (ft)	Offset (ft)	Highside Toolface (°)	Offset Wellbore Centre +N/-S (ft)	+E/-W (ft)	Between Centres (ft)	Between Ellipses (ft)	Minimum Separation (ft)	Separation Factor	Warning
10,300.0	7,100.3	10,281.4	7,100.3	63.3	63.1	-90.00	3,147.0	332.8	164.9	39.1	125.81	1.311	Level 3
10,400.0	7,099.8	10,381.4	7,099.8	65.1	64.9	-90.00	3,247.0	333.2	164.9	35.4	129.52	1.273	Level 3
10,500.0	7,099.3	10,481.4	7,099.3	67.0	66.8	-90.00	3,347.0	333.6	164.9	31.7	133.24	1.238	Level 2
10,600.0	7,098.9	10,581.4	7,098.8	68.8	68.7	-90.00	3,447.0	334.0	164.9	27.9	136.97	1.204	Level 2
10,700.0	7,098.4	10,681.4	7,098.4	70.7	70.5	-90.00	3,547.0	334.4	164.9	24.2	140.70	1.172	Level 2
10,800.0	7,097.9	10,781.4	7,097.9	72.5	72.4	-90.00	3,647.0	334.9	164.9	20.5	144.44	1.142	Level 2
10,900.0	7,097.4	10,881.4	7,097.4	74.4	74.2	-90.00	3,747.0	335.3	164.9	16.7	148.18	1.113	Level 2
11,000.0	7,097.0	10,981.4	7,097.0	76.2	76.1	-90.00	3,847.0	335.7	164.9	13.0	151.92	1.086	Level 2
11,100.0	7,096.5	11,081.4	7,096.5	78.1	78.0	-90.00	3,947.0	336.1	164.9	9.2	155.67	1.059	Level 2
11,200.0	7,096.0	11,181.4	7,096.0	80.0	79.9	-90.00	4,047.0	336.5	164.9	5.5	159.42	1.034	Level 2
11,300.0	7,095.6	11,281.4	7,095.6	81.9	81.7	-90.00	4,147.0	337.0	164.9	1.7	163.18	1.011	Level 2
11,400.0	7,095.1	11,381.4	7,095.1	83.7	83.6	-90.00	4,247.0	337.4	164.9	-2.0	166.94	0.988	Level 1
11,500.0	7,094.6	11,481.4	7,094.6	85.6	85.5	-90.00	4,347.0	337.8	164.9	-5.8	170.70	0.966	Level 1
11,600.0	7,094.1	11,581.4	7,094.1	87.5	87.4	-90.00	4,447.0	338.2	164.9	-9.6	174.47	0.945	Level 1
11,700.0	7,093.7	11,681.4	7,093.7	89.4	89.3	-90.00	4,547.0	338.6	164.9	-13.3	178.24	0.925	Level 1
11,735.4	7,093.5	11,716.8	7,093.5	90.0	89.9	-90.00	4,582.4	338.8	164.9	-14.7	179.57	0.918	Level 1, ES, SF

Company:	Verdad Oil & Gas Corporation	Local Co-ordinate Reference:	Well Meehl 01N-65W-24-7N
Project:	SEC.24-T1N-R65W	TVD Reference:	WELL @ 5038.5ft (RKB - 16.5')
Reference Site:	Meehl 01N-65W-24 Pad Sec.24-T01N-R65W	MD Reference:	WELL @ 5038.5ft (RKB - 16.5')
Site Error:	0.0ft	North Reference:	True
Reference Well:	Meehl 01N-65W-24-7N	Survey Calculation Method:	Minimum Curvature
Well Error:	0.0ft	Output errors are at	2.00 sigma
Reference Wellbore	Wellbore #1	Database:	landmark
Reference Design:	Plan #1 (10-17-14)	Offset TVD Reference:	Offset Datum

Offset Design												Offset Site Error:	0.0 ft
Survey Program: 0-MWD												Offset Well Error:	0.0 ft
Reference		Offset		Semi Major Axis			Distance						
Measured Depth (ft)	Vertical Depth (ft)	Measured Depth (ft)	Vertical Depth (ft)	Reference (ft)	Offset (ft)	Highside Toolface (°)	Offset Wellbore Centre +N/-S (ft)	+E/-W (ft)	Between Centres (ft)	Between Ellipses (ft)	Minimum Separation (ft)	Separation Factor	Warning
0.0	0.0	0.0	0.0	0.0	0.0	90.03	0.0	14.8	14.8	14.8	0.00	N/A	
100.0	100.0	100.0	100.0	0.1	0.1	90.03	0.0	14.8	14.8	14.6	0.22	66.034	
200.0	200.0	200.0	200.0	0.3	0.3	90.03	0.0	14.8	14.8	14.2	0.67	22.011	
300.0	300.0	300.0	300.0	0.6	0.6	90.03	0.0	14.8	14.8	13.7	1.12	13.207	
400.0	400.0	400.0	400.0	0.8	0.8	90.03	0.0	14.8	14.8	13.3	1.57	9.433	
500.0	500.0	500.0	500.0	1.0	1.0	90.03	0.0	14.8	14.8	12.8	2.02	7.337	
600.0	600.0	600.0	600.0	1.2	1.2	90.03	0.0	14.8	14.8	12.4	2.47	6.003 CC	
700.0	700.0	699.5	699.5	1.5	1.4	91.99	-0.6	16.5	16.5	13.6	2.90	5.679	
800.0	800.0	798.7	798.5	1.7	1.6	96.04	-2.3	21.4	21.5	18.2	3.33	6.464	
900.0	900.0	897.5	896.9	1.9	1.9	99.74	-5.1	29.4	30.0	26.2	3.77	7.959	
1,000.0	1,000.0	995.5	994.3	2.1	2.1	102.38	-8.9	40.6	42.0	37.7	4.23	9.910	
1,100.0	1,100.0	1,092.6	1,090.2	2.4	2.4	104.16	-13.8	54.8	57.3	52.6	4.73	12.125	
1,200.0	1,200.0	1,188.6	1,184.5	2.6	2.7	105.34	-19.7	71.8	76.0	70.8	5.26	14.463	
1,300.0	1,300.0	1,286.1	1,279.7	2.8	3.1	-8.35	-26.4	91.3	95.5	89.9	5.53	17.271	
1,400.0	1,399.8	1,384.8	1,376.2	3.0	3.5	-8.11	-33.3	111.1	111.6	105.6	5.94	18.789	
1,500.0	1,499.5	1,483.9	1,473.1	3.2	3.9	-8.16	-40.2	131.0	124.3	117.9	6.36	19.537	
1,600.0	1,598.7	1,583.5	1,570.4	3.4	4.3	-8.42	-47.1	151.0	133.6	126.8	6.79	19.663	
1,700.0	1,697.5	1,683.3	1,667.9	3.7	4.8	-8.87	-54.0	171.0	139.4	132.2	7.23	19.272	
1,800.0	1,795.9	1,783.2	1,765.5	4.0	5.2	-9.42	-60.9	191.1	143.4	135.7	7.71	18.610	
1,900.0	1,894.4	1,883.1	1,863.2	4.3	5.7	-9.93	-67.9	211.1	147.5	139.3	8.19	18.005	
2,000.0	1,992.9	1,983.0	1,960.8	4.6	6.1	-10.42	-74.8	231.2	151.5	142.9	8.68	17.452	
2,100.0	2,091.3	2,083.0	2,058.4	4.9	6.6	-10.88	-81.7	251.2	155.6	146.4	9.18	16.946	
2,200.0	2,189.8	2,182.9	2,156.1	5.3	7.0	-11.32	-88.7	271.3	159.7	150.0	9.69	16.482	
2,300.0	2,288.3	2,282.8	2,253.7	5.6	7.5	-11.74	-95.6	291.4	163.8	153.6	10.20	16.055	
2,400.0	2,386.7	2,382.7	2,351.3	6.0	8.0	-12.14	-102.5	311.4	167.9	157.2	10.72	15.663	
2,500.0	2,485.2	2,482.6	2,448.9	6.4	8.4	-12.52	-109.5	331.5	172.0	160.8	11.24	15.300	
2,600.0	2,583.7	2,582.5	2,546.6	6.7	8.9	-12.88	-116.4	351.5	176.1	164.3	11.77	14.965	
2,700.0	2,682.1	2,682.4	2,644.2	7.1	9.3	-13.22	-123.4	371.6	180.2	167.9	12.30	14.653	
2,800.0	2,780.6	2,782.3	2,741.8	7.5	9.8	-13.55	-130.3	391.7	184.4	171.5	12.83	14.364	
2,900.0	2,879.0	2,882.2	2,839.5	7.9	10.3	-13.87	-137.2	411.7	188.5	175.1	13.37	14.095	
3,000.0	2,977.5	2,982.1	2,937.1	8.2	10.7	-14.17	-144.2	431.8	192.6	178.7	13.91	13.844	
3,100.0	3,076.0	3,082.0	3,034.7	8.6	11.2	-14.45	-151.1	451.8	196.8	182.3	14.46	13.609	
3,200.0	3,174.4	3,182.0	3,132.4	9.0	11.7	-14.73	-158.0	471.9	200.9	185.9	15.01	13.388	
3,300.0	3,272.9	3,281.9	3,230.0	9.4	12.1	-15.00	-165.0	491.9	205.1	189.5	15.56	13.182	
3,400.0	3,371.4	3,381.8	3,327.6	9.8	12.6	-15.25	-171.9	512.0	209.2	193.1	16.11	12.987	
3,500.0	3,469.8	3,481.7	3,425.2	10.2	13.1	-15.50	-178.8	532.1	213.4	196.7	16.67	12.804	
3,600.0	3,568.3	3,581.6	3,522.9	10.6	13.5	-15.73	-185.8	552.1	217.6	200.3	17.22	12.632	
3,700.0	3,666.8	3,681.5	3,620.5	11.0	14.0	-15.96	-192.7	572.2	221.7	203.9	17.78	12.469	
3,800.0	3,765.2	3,783.7	3,720.4	11.4	14.5	-16.19	-199.7	592.5	225.8	207.4	18.34	12.308	
3,900.0	3,863.7	3,892.1	3,826.9	11.8	14.8	-16.57	-206.3	611.4	227.1	208.2	18.88	12.026	
4,000.0	3,962.2	4,000.4	3,934.1	12.2	15.1	-17.16	-211.4	626.4	224.7	205.2	19.43	11.566	
4,100.0	4,060.6	4,108.4	4,041.4	12.6	15.4	-17.99	-215.3	637.5	218.6	198.6	19.98	10.941	
4,200.0	4,159.1	4,215.6	4,148.4	13.0	15.6	-19.13	-217.8	644.7	209.0	188.4	20.56	10.165	
4,300.0	4,257.7	4,322.0	4,254.7	13.3	15.7	-20.56	-219.0	648.2	196.4	175.2	21.15	9.285	
4,400.0	4,356.7	4,424.0	4,356.7	13.6	15.8	-21.98	-219.1	648.5	183.9	162.2	21.68	8.482	
4,500.0	4,456.2	4,523.5	4,456.2	13.8	16.0	-23.16	-219.1	648.5	174.5	152.3	22.16	7.871	
4,600.0	4,555.9	4,623.3	4,555.9	14.0	16.1	-24.02	-219.1	648.5	168.2	145.7	22.58	7.450	
4,700.0	4,655.9	4,723.2	4,655.9	14.2	16.2	-24.46	-219.1	648.5	165.3	142.3	22.92	7.209	
4,764.6	4,720.5	4,787.9	4,720.5	14.3	16.3	-24.55	-219.1	648.5	164.6	141.5	23.14	7.115	
4,800.0	4,755.9	4,823.2	4,755.9	14.3	16.3	89.90	-219.1	648.5	164.9	141.7	23.28	7.086	
4,900.0	4,855.9	4,923.2	4,855.9	14.5	16.5	89.90	-219.1	648.5	164.9	141.3	23.63	6.980	
5,000.0	4,955.9	5,023.2	4,955.9	14.6	16.6	89.90	-219.1	648.5	164.9	141.0	23.99	6.876	

CC - Min centre to center distance or convergent point, SF - min separation factor, ES - min ellipse separation

Company:	Verdad Oil & Gas Corporation	Local Co-ordinate Reference:	Well Meehl 01N-65W-24-7N
Project:	SEC.24-T1N-R65W	TVD Reference:	WELL @ 5038.5ft (RKB - 16.5')
Reference Site:	Meehl 01N-65W-24 Pad Sec.24-T01N-R65W	MD Reference:	WELL @ 5038.5ft (RKB - 16.5')
Site Error:	0.0ft	North Reference:	True
Reference Well:	Meehl 01N-65W-24-7N	Survey Calculation Method:	Minimum Curvature
Well Error:	0.0ft	Output errors are at	2.00 sigma
Reference Wellbore	Wellbore #1	Database:	landmark
Reference Design:	Plan #1 (10-17-14)	Offset TVD Reference:	Offset Datum

Offset Design												Offset Site Error:	0.0 ft
Survey Program: 0-MWD												Offset Well Error:	0.0 ft
Reference		Offset		Semi Major Axis			Distance						Warning
Measured Depth (ft)	Vertical Depth (ft)	Measured Depth (ft)	Vertical Depth (ft)	Reference (ft)	Offset (ft)	Highside Toolface (°)	Offset Wellbore Centre +N/-S (ft)	+E/-W (ft)	Between Centres (ft)	Between Ellipses (ft)	Minimum Separation (ft)	Separation Factor	
5,100.0	5,055.9	5,123.2	5,055.9	14.8	16.8	89.90	-219.1	648.5	164.9	140.6	24.35	6.775	
5,200.0	5,155.9	5,223.2	5,155.9	14.9	16.9	89.90	-219.1	648.5	164.9	140.2	24.71	6.675	
5,300.0	5,255.9	5,323.2	5,255.9	15.1	17.0	89.90	-219.1	648.5	164.9	139.9	25.07	6.578	
5,400.0	5,355.9	5,423.2	5,355.9	15.2	17.2	89.90	-219.1	648.5	164.9	139.5	25.44	6.483	
5,500.0	5,455.9	5,523.2	5,455.9	15.4	17.3	89.90	-219.1	648.5	164.9	139.1	25.81	6.390	
5,600.0	5,555.9	5,623.2	5,555.9	15.6	17.5	89.90	-219.1	648.5	164.9	138.8	26.19	6.299	
5,700.0	5,655.9	5,723.2	5,655.9	15.7	17.6	89.90	-219.1	648.5	164.9	138.4	26.56	6.210	
5,800.0	5,755.9	5,823.2	5,755.9	15.9	17.8	89.90	-219.1	648.5	164.9	138.0	26.94	6.122	
5,900.0	5,855.9	5,923.2	5,855.9	16.1	17.9	89.90	-219.1	648.5	164.9	137.6	27.32	6.037	
6,000.0	5,955.9	6,023.2	5,955.9	16.2	18.1	89.90	-219.1	648.5	164.9	137.2	27.70	5.954	
6,100.0	6,055.9	6,123.2	6,055.9	16.4	18.2	89.90	-219.1	648.5	164.9	136.9	28.09	5.873	
6,200.0	6,155.9	6,223.2	6,155.9	16.6	18.4	89.90	-219.1	648.5	164.9	136.5	28.47	5.793	
6,300.0	6,255.9	6,323.2	6,255.9	16.7	18.5	89.90	-219.1	648.5	164.9	136.1	28.86	5.715	
6,400.0	6,355.9	6,423.2	6,355.9	16.9	18.7	89.90	-219.1	648.5	164.9	135.7	29.25	5.639	
6,500.0	6,455.9	6,523.2	6,455.9	17.1	18.8	89.90	-219.1	648.5	164.9	135.3	29.64	5.565	
6,600.0	6,555.9	6,623.2	6,555.9	17.3	19.0	89.90	-219.1	648.5	164.9	134.9	30.03	5.492	
6,612.9	6,568.8	6,636.2	6,568.8	17.3	19.0	89.69	-219.1	648.5	164.9	134.9	30.06	5.488	
6,700.0	6,655.7	6,723.1	6,655.6	17.4	19.1	89.66	-215.3	648.6	164.9	134.6	30.37	5.431	
6,800.0	6,753.2	6,822.9	6,752.9	17.5	19.2	89.67	-193.9	648.6	164.9	134.4	30.59	5.393	
6,900.0	6,844.8	6,922.7	6,844.4	17.6	19.3	89.70	-154.3	648.8	164.9	134.3	30.69	5.374	
7,000.0	6,927.2	7,022.6	6,926.7	17.6	19.3	89.74	-98.0	649.1	164.9	134.2	30.79	5.357	
7,100.0	6,997.2	7,122.5	6,996.8	17.6	19.3	89.78	-27.0	649.4	165.0	134.0	30.99	5.322	
7,200.0	7,052.4	7,222.3	7,052.0	17.6	19.3	89.84	56.0	649.7	165.0	133.5	31.43	5.249	
7,300.0	7,090.7	7,322.3	7,090.5	17.7	19.4	89.90	148.0	650.1	165.0	132.8	32.17	5.127	
7,400.0	7,110.8	7,422.2	7,110.6	17.9	19.6	89.96	245.8	650.5	165.0	131.7	33.28	4.957	
7,500.0	7,113.5	7,522.2	7,113.5	18.4	20.0	90.00	345.7	650.9	165.0	130.2	34.73	4.751	
7,600.0	7,113.0	7,622.2	7,113.0	19.2	20.6	90.00	445.7	651.4	165.0	128.5	36.50	4.519	
7,700.0	7,112.5	7,722.2	7,112.5	20.2	21.4	90.00	545.7	651.8	165.0	126.4	38.58	4.276	
7,800.0	7,112.0	7,822.2	7,112.0	21.3	22.4	90.00	645.7	652.2	165.0	124.1	40.91	4.033	
7,900.0	7,111.6	7,922.2	7,111.6	22.5	23.5	90.00	745.7	652.6	165.0	121.5	43.46	3.797	
8,000.0	7,111.1	8,022.2	7,111.1	23.9	24.8	90.00	845.7	653.1	165.0	118.8	46.18	3.573	
8,100.0	7,110.6	8,122.2	7,110.6	25.3	26.1	90.00	945.7	653.5	165.0	116.0	49.05	3.364	
8,200.0	7,110.2	8,222.2	7,110.2	26.7	27.5	90.00	1,045.7	653.9	165.0	113.0	52.04	3.171	
8,300.0	7,109.7	8,322.2	7,109.7	28.2	29.0	90.00	1,145.7	654.3	165.0	109.9	55.13	2.993	
8,400.0	7,109.2	8,422.2	7,109.2	29.8	30.5	90.00	1,245.7	654.8	165.0	106.7	58.32	2.830	
8,500.0	7,108.7	8,522.2	7,108.7	31.4	32.1	90.00	1,345.7	655.2	165.0	103.4	61.57	2.680	
8,600.0	7,108.3	8,622.2	7,108.3	33.0	33.7	90.00	1,445.7	655.6	165.0	100.1	64.89	2.543	
8,700.0	7,107.8	8,722.2	7,107.8	34.7	35.3	90.00	1,545.7	656.0	165.0	96.8	68.27	2.418	
8,800.0	7,107.3	8,822.2	7,107.3	36.4	37.0	90.00	1,645.7	656.4	165.0	93.4	71.68	2.302	
8,900.0	7,106.9	8,922.2	7,106.9	38.1	38.6	90.00	1,745.7	656.9	165.0	89.9	75.14	2.196	
9,000.0	7,106.4	9,022.2	7,106.4	39.8	40.3	90.00	1,845.6	657.3	165.1	86.4	78.63	2.099	
9,100.0	7,105.9	9,122.2	7,105.9	41.6	42.1	90.00	1,945.6	657.7	165.1	82.9	82.16	2.009	
9,200.0	7,105.4	9,222.2	7,105.4	43.3	43.8	90.00	2,045.6	658.1	165.1	79.4	85.70	1.926	
9,300.0	7,105.0	9,322.2	7,105.0	45.1	45.6	90.00	2,145.6	658.6	165.1	75.8	89.28	1.849	
9,400.0	7,104.5	9,422.2	7,104.5	46.9	47.3	90.00	2,245.6	659.0	165.1	72.2	92.87	1.777	
9,500.0	7,104.0	9,522.2	7,104.0	48.7	49.1	90.00	2,345.6	659.4	165.1	68.6	96.48	1.711	
9,600.0	7,103.6	9,622.2	7,103.6	50.5	50.9	90.00	2,445.6	659.8	165.1	65.0	100.10	1.649	
9,700.0	7,103.1	9,722.2	7,103.1	52.3	52.7	90.00	2,545.6	660.3	165.1	61.3	103.75	1.591	
9,800.0	7,102.6	9,822.2	7,102.6	54.1	54.5	90.00	2,645.6	660.7	165.1	57.7	107.40	1.537	
9,900.0	7,102.1	9,922.2	7,102.1	55.9	56.3	90.00	2,745.6	661.1	165.1	54.0	111.06	1.487 Level 3	
10,000.0	7,101.7	10,022.2	7,101.7	57.7	58.1	90.00	2,845.6	661.5	165.1	50.4	114.74	1.439 Level 3	
10,100.0	7,101.2	10,122.2	7,101.2	59.6	59.9	90.00	2,945.6	662.0	165.1	46.7	118.43	1.394 Level 3	

CC - Min centre to center distance or convergent point, SF - min separation factor, ES - min ellipse separation

Company:	Verdad Oil & Gas Corporation	Local Co-ordinate Reference:	Well Meehl 01N-65W-24-7N
Project:	SEC.24-T1N-R65W	TVD Reference:	WELL @ 5038.5ft (RKB - 16.5')
Reference Site:	Meehl 01N-65W-24 Pad Sec.24-T01N-R65W	MD Reference:	WELL @ 5038.5ft (RKB - 16.5')
Site Error:	0.0ft	North Reference:	True
Reference Well:	Meehl 01N-65W-24-7N	Survey Calculation Method:	Minimum Curvature
Well Error:	0.0ft	Output errors are at	2.00 sigma
Reference Wellbore	Wellbore #1	Database:	landmark
Reference Design:	Plan #1 (10-17-14)	Offset TVD Reference:	Offset Datum

Offset Design Meehl 01N-65W-24 Pad Sec.24-T01N-R65W - Meehl 01N-65W-24-8N - Wellbore #1 - Plan #1 (10-17-1												Offset Site Error:	0.0 ft
Survey Program: 0-MWD												Offset Well Error:	0.0 ft
Reference		Offset		Semi Major Axis			Distance						
Measured Depth (ft)	Vertical Depth (ft)	Measured Depth (ft)	Vertical Depth (ft)	Reference (ft)	Offset (ft)	Highside Toolface (°)	Offset Wellbore Centre +N/-S (ft)	+E/-W (ft)	Between Centres (ft)	Between Ellipses (ft)	Minimum Separation (ft)	Separation Factor	Warning
10,200.0	7,100.7	10,222.2	7,100.7	61.4	61.7	90.00	3,045.6	662.4	165.1	43.0	122.12	1.352 Level 3	
10,300.0	7,100.3	10,322.2	7,100.3	63.3	63.6	90.00	3,145.6	662.8	165.1	39.3	125.82	1.312 Level 3	
10,400.0	7,099.8	10,422.2	7,099.8	65.1	65.4	90.00	3,245.6	663.2	165.1	35.6	129.53	1.275 Level 3	
10,500.0	7,099.3	10,522.2	7,099.3	67.0	67.3	90.00	3,345.6	663.7	165.1	31.9	133.25	1.239 Level 2	
10,600.0	7,098.9	10,622.2	7,098.9	68.8	69.1	90.00	3,445.6	664.1	165.1	28.2	136.97	1.206 Level 2	
10,700.0	7,098.4	10,722.2	7,098.4	70.7	70.9	90.00	3,545.6	664.5	165.1	24.4	140.70	1.174 Level 2	
10,800.0	7,097.9	10,822.2	7,097.9	72.5	72.8	90.00	3,645.6	664.9	165.1	20.7	144.43	1.143 Level 2	
10,900.0	7,097.4	10,922.2	7,097.4	74.4	74.7	90.00	3,745.6	665.4	165.2	17.0	148.17	1.115 Level 2	
11,000.0	7,097.0	11,022.2	7,097.0	76.2	76.5	90.00	3,845.6	665.8	165.2	13.2	151.92	1.087 Level 2	
11,100.0	7,096.5	11,122.2	7,096.5	78.1	78.4	90.00	3,945.6	666.2	165.2	9.5	155.66	1.061 Level 2	
11,200.0	7,096.0	11,222.2	7,096.0	80.0	80.2	90.00	4,045.6	666.6	165.2	5.8	159.41	1.036 Level 2	
11,300.0	7,095.6	11,322.2	7,095.6	81.9	82.1	90.00	4,145.6	667.0	165.2	2.0	163.17	1.012 Level 2	
11,400.0	7,095.1	11,422.2	7,095.1	83.7	84.0	90.00	4,245.6	667.5	165.2	-1.7	166.93	0.990 Level 1	
11,500.0	7,094.6	11,522.2	7,094.6	85.6	85.8	90.00	4,345.6	667.9	165.2	-5.5	170.69	0.968 Level 1	
11,600.0	7,094.1	11,622.2	7,094.1	87.5	87.7	90.00	4,445.6	668.3	165.2	-9.3	174.45	0.947 Level 1	
11,700.0	7,093.7	11,722.2	7,093.7	89.4	89.6	90.00	4,545.6	668.7	165.2	-13.0	178.22	0.927 Level 1	
11,735.4	7,093.5	11,757.6	7,093.5	90.0	90.2	90.00	4,581.0	668.9	165.2	-14.4	179.55	0.920 Level 1, ES, SF	

Company:	Verdad Oil & Gas Corporation	Local Co-ordinate Reference:	Well Meehl 01N-65W-24-7N
Project:	SEC.24-T1N-R65W	TVD Reference:	WELL @ 5038.5ft (RKB - 16.5')
Reference Site:	Meehl 01N-65W-24 Pad Sec.24-T01N-R65W	MD Reference:	WELL @ 5038.5ft (RKB - 16.5')
Site Error:	0.0ft	North Reference:	True
Reference Well:	Meehl 01N-65W-24-7N	Survey Calculation Method:	Minimum Curvature
Well Error:	0.0ft	Output errors are at	2.00 sigma
Reference Wellbore	Wellbore #1	Database:	landmark
Reference Design:	Plan #1 (10-17-14)	Offset TVD Reference:	Offset Datum

Offset Design													Offset Site Error:	0.0 ft
Survey Program: 0-MWD													Offset Well Error:	0.0 ft
Reference		Offset		Semi Major Axis			Distance							Warning
Measured Depth (ft)	Vertical Depth (ft)	Measured Depth (ft)	Vertical Depth (ft)	Reference (ft)	Offset (ft)	Highside Toolface (°)	Offset Wellbore Centre +N/-S (ft)	+E/-W (ft)	Between Centres (ft)	Between Ellipses (ft)	Minimum Separation (ft)	Separation Factor		
0.0	0.0	0.0	0.0	0.0	0.0	90.04	0.0	30.0	30.0					
100.0	100.0	100.0	100.0	0.1	0.1	90.04	0.0	30.0	30.0	29.7	0.22	133.313		
200.0	200.0	200.0	200.0	0.3	0.3	90.04	0.0	30.0	30.0	29.3	0.67	44.438 CC, ES		
300.0	300.0	299.0	298.9	0.6	0.5	90.87	-0.5	31.6	31.6	30.5	1.11	28.529		
400.0	400.0	397.7	397.5	0.8	0.8	92.91	-1.9	36.5	36.7	35.1	1.55	23.659		
500.0	500.0	496.0	495.4	1.0	1.0	95.29	-4.1	44.7	45.1	43.1	2.01	22.413		
600.0	600.0	593.5	592.3	1.2	1.3	97.42	-7.3	56.0	57.0	54.4	2.50	22.766		
700.0	700.0	690.2	687.8	1.5	1.6	99.12	-11.3	70.3	72.2	69.2	3.03	23.864		
800.0	800.0	785.7	781.6	1.7	2.0	100.42	-16.1	87.4	90.8	87.2	3.59	25.298		
900.0	900.0	880.0	873.6	1.9	2.4	101.40	-21.6	107.3	112.6	108.4	4.19	26.857		
1,000.0	1,000.0	973.9	964.6	2.1	2.9	102.15	-28.0	129.9	137.5	132.7	4.84	28.407		
1,100.0	1,100.0	1,070.6	1,058.0	2.4	3.4	102.69	-34.7	153.9	163.3	157.7	5.53	29.542		
1,200.0	1,200.0	1,167.2	1,151.3	2.6	3.9	103.09	-41.4	177.9	189.0	182.8	6.22	30.383		
1,300.0	1,300.0	1,264.2	1,245.1	2.8	4.4	-11.00	-48.1	202.0	213.1	207.4	5.75	37.047		
1,400.0	1,399.8	1,362.0	1,339.6	3.0	4.9	-10.92	-54.9	226.3	233.9	227.7	6.20	37.707		
1,500.0	1,499.5	1,460.5	1,434.7	3.2	5.5	-11.01	-61.7	250.7	251.3	244.6	6.66	37.710		
1,600.0	1,598.7	1,559.5	1,530.4	3.4	6.0	-11.23	-68.6	275.3	265.3	258.2	7.13	37.189		
1,700.0	1,697.5	1,658.9	1,626.4	3.7	6.5	-11.58	-75.5	300.0	276.0	268.3	7.61	36.246		
1,800.0	1,795.9	1,758.5	1,722.6	4.0	7.1	-12.03	-82.4	324.7	284.8	276.7	8.12	35.085		
1,900.0	1,894.4	1,858.1	1,818.9	4.3	7.6	-12.44	-89.3	349.5	293.7	285.1	8.63	34.027		
2,000.0	1,992.9	1,957.7	1,915.1	4.6	8.2	-12.84	-96.2	374.2	302.6	293.4	9.15	33.062		
2,100.0	2,091.3	2,057.3	2,011.3	4.9	8.7	-13.21	-103.1	398.9	311.5	301.8	9.68	32.180		
2,200.0	2,189.8	2,156.8	2,107.5	5.3	9.3	-13.56	-110.1	423.6	320.4	310.2	10.21	31.372		
2,300.0	2,288.3	2,256.4	2,203.7	5.6	9.8	-13.89	-117.0	448.4	329.3	318.6	10.75	30.631		
2,400.0	2,386.7	2,356.0	2,299.9	6.0	10.4	-14.20	-123.9	473.1	338.3	327.0	11.30	29.949		
2,500.0	2,485.2	2,455.6	2,396.2	6.4	11.0	-14.50	-130.8	497.8	347.2	335.4	11.84	29.319		
2,600.0	2,583.7	2,555.2	2,492.4	6.7	11.5	-14.78	-137.7	522.6	356.2	343.8	12.39	28.737		
2,700.0	2,682.1	2,654.8	2,588.6	7.1	12.1	-15.05	-144.6	547.3	365.1	352.2	12.95	28.197		
2,800.0	2,780.6	2,754.3	2,684.8	7.5	12.6	-15.30	-151.5	572.0	374.1	360.6	13.51	27.695		
2,900.0	2,879.0	2,853.9	2,781.0	7.9	13.2	-15.55	-158.4	596.7	383.1	369.0	14.07	27.228		
3,000.0	2,977.5	2,953.5	2,877.2	8.2	13.7	-15.78	-165.4	621.5	392.1	377.4	14.63	26.792		
3,100.0	3,076.0	3,053.1	2,973.4	8.6	14.3	-16.00	-172.3	646.2	401.1	385.9	15.20	26.384		
3,200.0	3,174.4	3,152.7	3,069.7	9.0	14.8	-16.21	-179.2	670.9	410.1	394.3	15.77	26.002		
3,300.0	3,272.9	3,252.3	3,165.9	9.4	15.4	-16.41	-186.1	695.6	419.1	402.7	16.34	25.644		
3,400.0	3,371.4	3,352.0	3,262.2	9.8	15.9	-16.61	-193.0	720.4	428.1	411.2	16.92	25.307		
3,500.0	3,469.8	3,469.2	3,376.1	10.2	16.4	-16.87	-200.5	747.2	435.0	417.6	17.49	24.873		
3,600.0	3,568.3	3,586.9	3,491.4	10.6	16.8	-17.22	-206.8	769.6	438.0	419.9	18.05	24.264		
3,700.0	3,666.8	3,704.6	3,607.7	11.0	17.2	-17.67	-211.8	787.5	436.8	418.2	18.60	23.483		
3,800.0	3,765.2	3,822.0	3,724.2	11.4	17.4	-18.22	-215.4	800.7	431.7	412.5	19.15	22.545		
3,900.0	3,863.7	3,938.6	3,840.5	11.8	17.6	-18.89	-217.8	809.2	422.6	402.9	19.69	21.461		
4,000.0	3,962.2	4,054.1	3,956.0	12.2	17.8	-19.71	-218.9	813.1	409.5	389.3	20.24	20.235		
4,100.0	4,060.6	4,158.8	4,060.6	12.6	17.9	-20.61	-219.0	813.5	393.4	372.6	20.78	18.932		
4,200.0	4,159.1	4,257.3	4,159.1	13.0	18.0	-21.54	-219.0	813.5	377.1	355.8	21.32	17.686		
4,300.0	4,257.7	4,355.8	4,257.7	13.3	18.1	-22.46	-219.0	813.5	361.4	339.6	21.84	16.546		
4,400.0	4,356.7	4,454.9	4,356.7	13.6	18.2	-23.21	-219.0	813.5	348.8	326.5	22.29	15.648		
4,500.0	4,456.2	4,554.3	4,456.2	13.8	18.3	-23.82	-219.0	813.5	339.4	316.7	22.69	14.957		
4,600.0	4,555.9	4,654.1	4,555.9	14.0	18.4	-24.24	-219.0	813.5	333.2	310.1	23.04	14.461		
4,700.0	4,655.9	4,754.0	4,655.9	14.2	18.6	-24.45	-219.0	813.5	330.2	306.8	23.33	14.149		
4,764.6	4,720.5	4,818.7	4,720.5	14.3	18.6	-24.49	-219.0	813.5	329.6	306.0	23.54	14.001		
4,800.0	4,755.9	4,854.0	4,755.9	14.3	18.7	89.93	-219.0	813.5	329.9	306.2	23.68	13.932		
4,900.0	4,855.9	4,954.0	4,855.9	14.5	18.8	89.93	-219.0	813.5	329.9	305.8	24.02	13.731		
5,000.0	4,955.9	5,054.0	4,955.9	14.6	18.9	89.93	-219.0	813.5	329.9	305.5	24.37	13.533		

CC - Min centre to center distance or convergent point, SF - min separation factor, ES - min ellipse separation

Company:	Verdad Oil & Gas Corporation	Local Co-ordinate Reference:	Well Meehl 01N-65W-24-7N
Project:	SEC.24-T1N-R65W	TVD Reference:	WELL @ 5038.5ft (RKB - 16.5')
Reference Site:	Meehl 01N-65W-24 Pad Sec.24-T01N-R65W	MD Reference:	WELL @ 5038.5ft (RKB - 16.5')
Site Error:	0.0ft	North Reference:	True
Reference Well:	Meehl 01N-65W-24-7N	Survey Calculation Method:	Minimum Curvature
Well Error:	0.0ft	Output errors are at	2.00 sigma
Reference Wellbore	Wellbore #1	Database:	landmark
Reference Design:	Plan #1 (10-17-14)	Offset TVD Reference:	Offset Datum

Offset Design												Offset Site Error:	0.0 ft
Survey Program: 0-MWD												Offset Well Error:	0.0 ft
Reference		Offset		Semi Major Axis			Distance						
Measured Depth (ft)	Vertical Depth (ft)	Measured Depth (ft)	Vertical Depth (ft)	Reference (ft)	Offset (ft)	Highside Toolface (°)	Offset Wellbore Centre +N/-S (ft)	+E/-W (ft)	Between Centres (ft)	Between Ellipses (ft)	Minimum Separation (ft)	Separation Factor	Warning
5,100.0	5,055.9	5,154.0	5,055.9	14.8	19.0	89.93	-219.0	813.5	329.9	305.1	24.73	13.339	
5,200.0	5,155.9	5,254.0	5,155.9	14.9	19.1	89.93	-219.0	813.5	329.9	304.8	25.09	13.150	
5,300.0	5,255.9	5,354.0	5,255.9	15.1	19.3	89.93	-219.0	813.5	329.9	304.4	25.45	12.963	
5,400.0	5,355.9	5,454.0	5,355.9	15.2	19.4	89.93	-219.0	813.5	329.9	304.1	25.81	12.781	
5,500.0	5,455.9	5,554.0	5,455.9	15.4	19.5	89.93	-219.0	813.5	329.9	303.7	26.17	12.603	
5,600.0	5,555.9	5,654.0	5,555.9	15.6	19.7	89.93	-219.0	813.5	329.9	303.3	26.54	12.428	
5,700.0	5,655.9	5,754.0	5,655.9	15.7	19.8	89.93	-219.0	813.5	329.9	303.0	26.91	12.257	
5,800.0	5,755.9	5,854.0	5,755.9	15.9	19.9	89.93	-219.0	813.5	329.9	302.6	27.29	12.089	
5,900.0	5,855.9	5,954.0	5,855.9	16.1	20.1	89.93	-219.0	813.5	329.9	302.2	27.66	11.925	
6,000.0	5,955.9	6,054.0	5,955.9	16.2	20.2	89.93	-219.0	813.5	329.9	301.8	28.04	11.765	
6,100.0	6,055.9	6,154.0	6,055.9	16.4	20.3	89.93	-219.0	813.5	329.9	301.4	28.42	11.608	
6,200.0	6,155.9	6,254.0	6,155.9	16.6	20.5	89.93	-219.0	813.5	329.9	301.1	28.80	11.454	
6,300.0	6,255.9	6,354.0	6,255.9	16.7	20.6	89.93	-219.0	813.5	329.9	300.7	29.18	11.304	
6,400.0	6,355.9	6,454.0	6,355.9	16.9	20.8	89.93	-219.0	813.5	329.9	300.3	29.57	11.156	
6,500.0	6,455.9	6,554.0	6,455.9	17.1	20.9	89.93	-219.0	813.5	329.9	299.9	29.95	11.012	
6,600.0	6,555.9	6,654.0	6,555.9	17.3	21.0	89.93	-219.0	813.5	329.9	299.5	30.34	10.871	
6,659.5	6,615.4	6,713.5	6,615.4	17.4	21.1	90.07	-219.0	813.5	329.9	299.4	30.50	10.815	
6,700.0	6,655.7	6,753.9	6,655.7	17.4	21.2	90.35	-219.0	813.5	329.9	299.2	30.62	10.773	
6,800.0	6,753.2	6,851.4	6,753.2	17.5	21.3	93.89	-219.0	813.5	330.7	300.2	30.55	10.825	
6,900.0	6,844.8	6,943.0	6,844.8	17.6	21.5	99.53	-219.0	813.5	335.9	305.6	30.26	11.098	
7,000.0	6,927.2	7,036.3	6,938.1	17.6	21.6	106.46	-217.3	813.5	350.5	320.7	29.81	11.757	
7,100.0	6,997.2	7,168.4	7,065.5	17.6	21.7	114.67	-184.5	813.6	371.4	342.4	28.98	12.816	
7,200.0	7,052.4	7,341.2	7,205.1	17.6	21.7	121.29	-84.8	814.0	389.5	361.6	27.90	13.958	
7,300.0	7,090.7	7,547.1	7,301.5	17.7	21.7	123.33	94.8	814.8	395.0	367.4	27.61	14.308	
7,400.0	7,110.8	7,699.2	7,313.6	17.9	21.9	121.44	245.8	815.4	387.3	358.8	28.51	13.583	
7,479.4	7,115.7	7,778.4	7,313.4	18.3	22.1	120.93	325.0	815.8	384.6	355.2	29.35	13.105	
7,500.0	7,113.5	7,799.1	7,313.3	18.4	22.2	121.20	345.7	815.9	385.7	356.2	29.45	13.098	
7,600.0	7,113.0	7,899.1	7,312.9	19.2	22.7	121.22	445.7	816.3	385.8	354.9	30.90	12.484	
7,700.0	7,112.5	7,999.1	7,312.6	20.2	23.3	121.23	545.7	816.7	385.8	353.2	32.64	11.822	
7,800.0	7,112.0	8,099.1	7,312.2	21.3	24.2	121.25	645.7	817.1	385.9	351.3	34.61	11.149	
7,900.0	7,111.6	8,199.1	7,311.9	22.5	25.2	121.26	745.7	817.6	386.0	349.2	36.79	10.492	
8,000.0	7,111.1	8,299.1	7,311.5	23.9	26.3	121.28	845.7	818.0	386.0	346.9	39.13	9.865	
8,100.0	7,110.6	8,399.1	7,311.2	25.3	27.5	121.30	945.7	818.4	386.1	344.5	41.61	9.279	
8,200.0	7,110.2	8,499.1	7,310.8	26.7	28.8	121.31	1,045.7	818.8	386.2	342.0	44.20	8.736	
8,300.0	7,109.7	8,599.1	7,310.5	28.2	30.2	121.33	1,145.7	819.2	386.2	339.3	46.89	8.236	
8,400.0	7,109.2	8,699.1	7,310.1	29.8	31.6	121.34	1,245.7	819.7	386.3	336.6	49.66	7.778	
8,500.0	7,108.7	8,799.1	7,309.8	31.4	33.1	121.36	1,345.7	820.1	386.4	333.9	52.50	7.359	
8,600.0	7,108.3	8,899.1	7,309.4	33.0	34.7	121.37	1,445.7	820.5	386.4	331.0	55.39	6.976	
8,700.0	7,107.8	8,999.1	7,309.1	34.7	36.3	121.39	1,545.7	820.9	386.5	328.2	58.34	6.626	
8,800.0	7,107.3	9,099.1	7,308.7	36.4	37.9	121.40	1,645.7	821.4	386.6	325.3	61.32	6.304	
8,900.0	7,106.9	9,199.1	7,308.4	38.1	39.5	121.42	1,745.7	821.8	386.6	322.3	64.34	6.010	
9,000.0	7,106.4	9,299.1	7,308.0	39.8	41.2	121.43	1,845.7	822.2	386.7	319.3	67.38	5.739	
9,100.0	7,105.9	9,399.1	7,307.7	41.6	42.9	121.45	1,945.7	822.6	386.8	316.3	70.46	5.490	
9,200.0	7,105.4	9,499.1	7,307.3	43.3	44.6	121.46	2,045.7	823.1	386.8	313.3	73.55	5.259	
9,300.0	7,105.0	9,599.1	7,307.0	45.1	46.3	121.48	2,145.6	823.5	386.9	310.2	76.67	5.047	
9,400.0	7,104.5	9,699.1	7,306.6	46.9	48.0	121.49	2,245.6	823.9	387.0	307.2	79.80	4.849	
9,500.0	7,104.0	9,799.1	7,306.3	48.7	49.8	121.51	2,345.6	824.3	387.1	304.1	82.95	4.666	
9,600.0	7,103.6	9,899.1	7,306.0	50.5	51.5	121.52	2,445.6	824.8	387.1	301.0	86.12	4.495	
9,700.0	7,103.1	9,999.1	7,305.6	52.3	53.3	121.54	2,545.6	825.2	387.2	297.9	89.29	4.336	
9,800.0	7,102.6	10,099.1	7,305.3	54.1	55.1	121.55	2,645.6	825.6	387.3	294.8	92.48	4.188	
9,900.0	7,102.1	10,199.1	7,304.9	55.9	56.9	121.57	2,745.6	826.0	387.3	291.7	95.67	4.048	
10,000.0	7,101.7	10,299.1	7,304.6	57.7	58.7	121.58	2,845.6	826.5	387.4	288.5	98.88	3.918	

CC - Min centre to center distance or convergent point, SF - min separation factor, ES - min ellipse separation

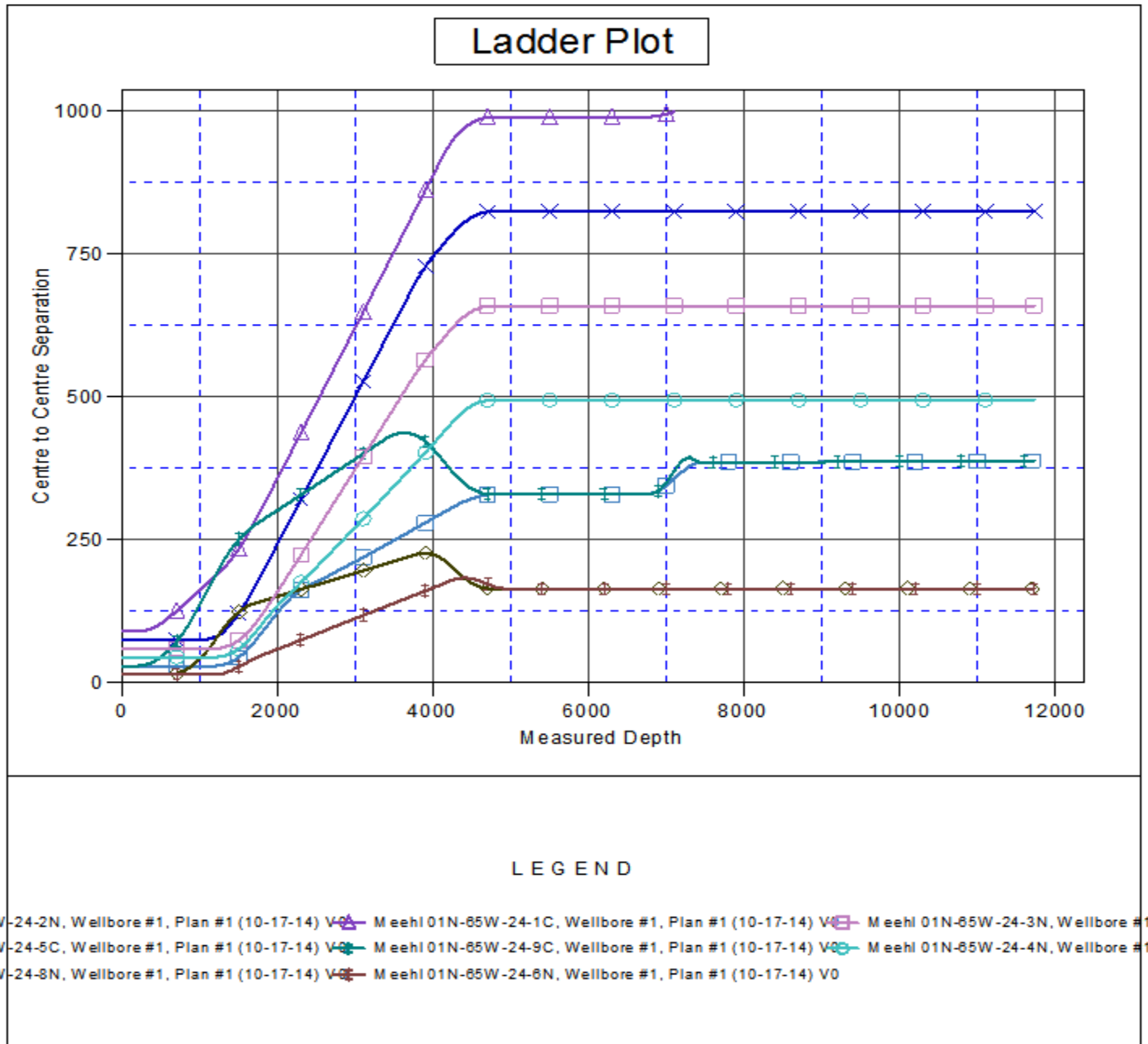
Company:	Verdad Oil & Gas Corporation	Local Co-ordinate Reference:	Well Meehl 01N-65W-24-7N
Project:	SEC.24-T1N-R65W	TVD Reference:	WELL @ 5038.5ft (RKB - 16.5')
Reference Site:	Meehl 01N-65W-24 Pad Sec.24-T01N-R65W	MD Reference:	WELL @ 5038.5ft (RKB - 16.5')
Site Error:	0.0ft	North Reference:	True
Reference Well:	Meehl 01N-65W-24-7N	Survey Calculation Method:	Minimum Curvature
Well Error:	0.0ft	Output errors are at	2.00 sigma
Reference Wellbore	Wellbore #1	Database:	landmark
Reference Design:	Plan #1 (10-17-14)	Offset TVD Reference:	Offset Datum

Offset Design Meehl 01N-65W-24 Pad Sec.24-T01N-R65W - Meehl 01N-65W-24-9C - Wellbore #1 - Plan #1 (10-17-1												Offset Site Error:	0.0 ft
Survey Program: 0-MWD												Offset Well Error:	0.0 ft
Reference		Offset		Semi Major Axis			Distance						
Measured Depth (ft)	Vertical Depth (ft)	Measured Depth (ft)	Vertical Depth (ft)	Reference (ft)	Offset (ft)	Highside Toolface (°)	Offset Wellbore Centre +N/-S (ft)	+E/-W (ft)	Between Centres (ft)	Between Ellipses (ft)	Minimum Separation (ft)	Separation Factor	Warning
10,100.0	7,101.2	10,399.1	7,304.2	59.6	60.5	121.60	2,945.6	826.9	387.5	285.4	102.09	3.795	
10,200.0	7,100.7	10,499.1	7,303.9	61.4	62.3	121.61	3,045.6	827.3	387.5	282.2	105.31	3.680	
10,300.0	7,100.3	10,599.1	7,303.5	63.3	64.1	121.63	3,145.6	827.7	387.6	279.1	108.53	3.571	
10,400.0	7,099.8	10,699.1	7,303.2	65.1	65.9	121.64	3,245.6	828.2	387.7	275.9	111.76	3.469	
10,500.0	7,099.3	10,799.1	7,302.8	67.0	67.8	121.66	3,345.6	828.6	387.7	272.7	115.00	3.372	
10,600.0	7,098.9	10,899.1	7,302.5	68.8	69.6	121.67	3,445.6	829.0	387.8	269.6	118.24	3.280	
10,700.0	7,098.4	10,999.1	7,302.1	70.7	71.4	121.69	3,545.6	829.4	387.9	266.4	121.48	3.193	
10,800.0	7,097.9	11,099.1	7,301.8	72.5	73.3	121.70	3,645.6	829.8	387.9	263.2	124.73	3.110	
10,900.0	7,097.4	11,199.1	7,301.4	74.4	75.1	121.72	3,745.6	830.3	388.0	260.0	127.98	3.032	
11,000.0	7,097.0	11,299.1	7,301.1	76.2	77.0	121.73	3,845.6	830.7	388.1	256.8	131.24	2.957	
11,100.0	7,096.5	11,399.1	7,300.7	78.1	78.8	121.75	3,945.6	831.1	388.1	253.7	134.49	2.886	
11,200.0	7,096.0	11,499.1	7,300.4	80.0	80.7	121.76	4,045.6	831.5	388.2	250.5	137.75	2.818	
11,300.0	7,095.6	11,599.1	7,300.0	81.9	82.5	121.78	4,145.6	832.0	388.3	247.3	141.01	2.754	
11,400.0	7,095.1	11,699.1	7,299.7	83.7	84.4	121.79	4,245.6	832.4	388.4	244.1	144.28	2.692	
11,500.0	7,094.6	11,799.1	7,299.3	85.6	86.2	121.80	4,345.6	832.8	388.4	240.9	147.54	2.633	
11,600.0	7,094.1	11,899.1	7,299.0	87.5	88.1	121.82	4,445.6	833.2	388.5	237.7	150.81	2.576	
11,700.0	7,093.7	11,999.1	7,298.6	89.4	90.0	121.83	4,545.6	833.7	388.6	234.5	154.08	2.522	
11,735.4	7,093.5	12,033.7	7,298.5	90.0	90.6	121.84	4,580.3	833.8	388.6	233.4	155.22	2.503 SF	

Company:	Verdad Oil & Gas Corporation	Local Co-ordinate Reference:	Well Meehl 01N-65W-24-7N
Project:	SEC.24-T1N-R65W	TVD Reference:	WELL @ 5038.5ft (RKB - 16.5')
Reference Site:	Meehl 01N-65W-24 Pad Sec.24-T01N-R65W	MD Reference:	WELL @ 5038.5ft (RKB - 16.5')
Site Error:	0.0ft	North Reference:	True
Reference Well:	Meehl 01N-65W-24-7N	Survey Calculation Method:	Minimum Curvature
Well Error:	0.0ft	Output errors are at	2.00 sigma
Reference Wellbore	Wellbore #1	Database:	landmark
Reference Design:	Plan #1 (10-17-14)	Offset TVD Reference:	Offset Datum

Reference Depths are relative to WELL @ 5038.5ft (RKB - 16.5')
Offset Depths are relative to Offset Datum
Central Meridian is -105.500000 °

Coordinates are relative to: Meehl 01N-65W-24-7N
Coordinate System is US State Plane 1983, Colorado Northern Zone
Grid Convergence at Surface is: 0.58°



Company:	Verdad Oil & Gas Corporation	Local Co-ordinate Reference:	Well Meehl 01N-65W-24-7N
Project:	SEC.24-T1N-R65W	TVD Reference:	WELL @ 5038.5ft (RKB - 16.5')
Reference Site:	Meehl 01N-65W-24 Pad Sec.24-T01N-R65W	MD Reference:	WELL @ 5038.5ft (RKB - 16.5')
Site Error:	0.0ft	North Reference:	True
Reference Well:	Meehl 01N-65W-24-7N	Survey Calculation Method:	Minimum Curvature
Well Error:	0.0ft	Output errors are at	2.00 sigma
Reference Wellbore	Wellbore #1	Database:	landmark
Reference Design:	Plan #1 (10-17-14)	Offset TVD Reference:	Offset Datum

Reference Depths are relative to WELL @ 5038.5ft (RKB - 16.5')

Offset Depths are relative to Offset Datum

Central Meridian is -105.500000 °

Coordinates are relative to: Meehl 01N-65W-24-7N

Coordinate System is US State Plane 1983, Colorado Northern Zone

Grid Convergence at Surface is: 0.58°

