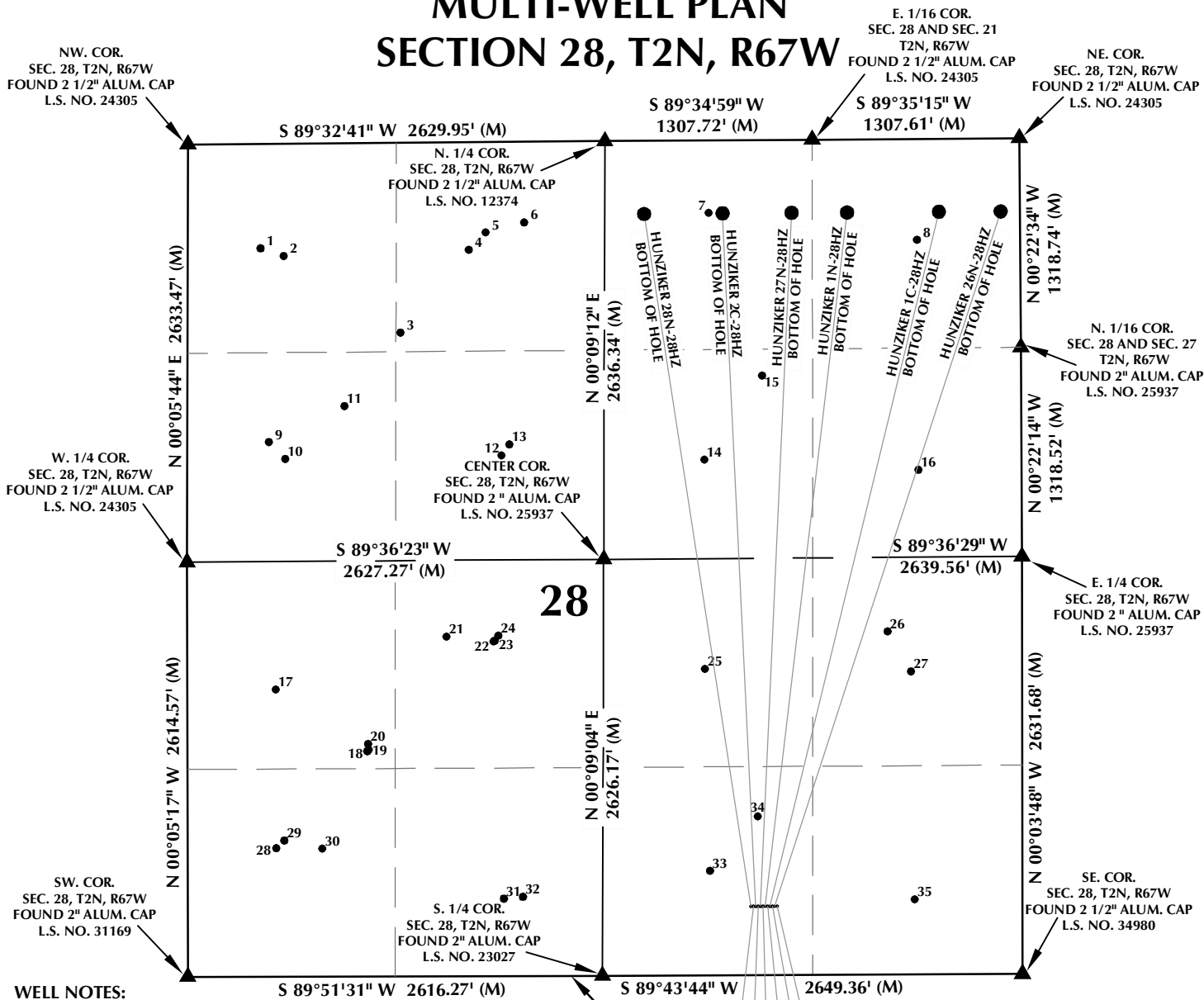


MULTI-WELL PLAN SECTION 28, T2N, R67W



WELL NOTES:

HUNZIKER 28N-28HZ
SURFACE: 433' FSL, 1713' FEL
BOTTOM HOLE: 460' FNL, 2370' FEL

HUNZIKER 28N-4HZ
SURFACE: 433' FSL, 1698' FEL
BOTTOM HOLE: 360' FNL, 2370' FEL

HUNZIKER 2C-28HZ
SURFACE: 433' FSL, 1683' FEL
BOTTOM HOLE: 460' FNL, 1875' FEL

HUNZIKER 2N-4HZ
SURFACE: 433' FSL, 1668' FEL
BOTTOM HOLE: 360' FNL, 1875' FEL

HUNZIKER 27N-28HZ
SURFACE: 433' FSL, 1653' FEL
BOTTOM HOLE: 460' FNL, 1440' FEL

HUNZIKER 27C-4HZ
SURFACE: 433' FSL, 1638' FEL
BOTTOM HOLE: 360' FNL, 1450' FEL

HUNZIKER 1N-28HZ
SURFACE: 433' FSL, 1623' FEL
BOTTOM HOLE: 460' FNL, 1090' FEL

HUNZIKER 1N-4HZ

SURFACE: 433' FSL, 1608' FEL
BOTTOM HOLE: 360' FNL, 990' FEL

HUNZIKER 1C-28HZ
SURFACE: 433' FSL, 1593' FEL
BOTTOM HOLE: 460' FNL, 510' FEL

HUNZIKER 26N-4HZ
SURFACE: 433' FSL, 1578' FEL
BOTTOM HOLE: 360' FNL, 510' FEL

HUNZIKER 26N-28HZ
SURFACE: 433' FSL, 1563' FEL
BOTTOM HOLE: 460' FNL, 120' FEL

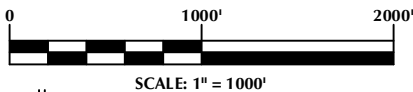
HUNZIKER 26C-4HZ
SURFACE: 433' FSL, 1548' FEL
BOTTOM HOLE: 360' FNL, 120' FEL

MATCH LINE
SEE SHEET 1B

WELL BORES CONTINUE
INTO SECTION 33

NOTES:

1. ▲ INDICATES FOUND SECTION CORNER
2. ● INDICATES CALCULATED CORNER
3. BASIS OF BEARING DERIVED FROM COLORADO COORDINATE SYSTEM 1983 NORTH ZONE UNLESS OTHERWISE NOTED.
4. ALL MEASURED DISTANCES ARE GRID.
5. COMBINED SCALE FACTOR: .99972257 WELL FOOTAGES ARE MEASURED AT RIGHT ANGLES TO THE SECTION LINES.



WELL PAD - HUNZIKER 27C-4HZ

MULTI-WELL PLAN
HUNZIKER 28N-28HZ, HUNZIKER 28N-4HZ,
HUNZIKER 2C-28HZ, HUNZIKER 2N-4HZ,
HUNZIKER 27N-28HZ, HUNZIKER 27C-4HZ,
HUNZIKER 1N-28HZ, HUNZIKER 1N-4HZ,
HUNZIKER 1C-28HZ, HUNZIKER 26N-4HZ,
HUNZIKER 26N-28HZ & HUNZIKER 26C-4HZ
LOCATED IN SECTIONS 28 & 33, T2N, R67W, 6TH P.M. &
LOCATED IN SECTION 4, T1N, R67W, 6TH P.M.
WELD COUNTY, COLORADO

**Kerr-McGee Oil &
Gas Onshore L.P.**
1099 18th Street
Denver, Colorado 80202



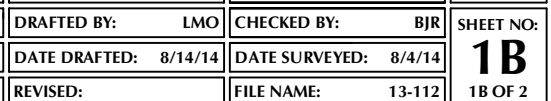
CONSULTING, LLC

SHERIDAN OFFICE
2155 North Main Street
Sheridan, Wyoming 82801
Phone 307-674-0609

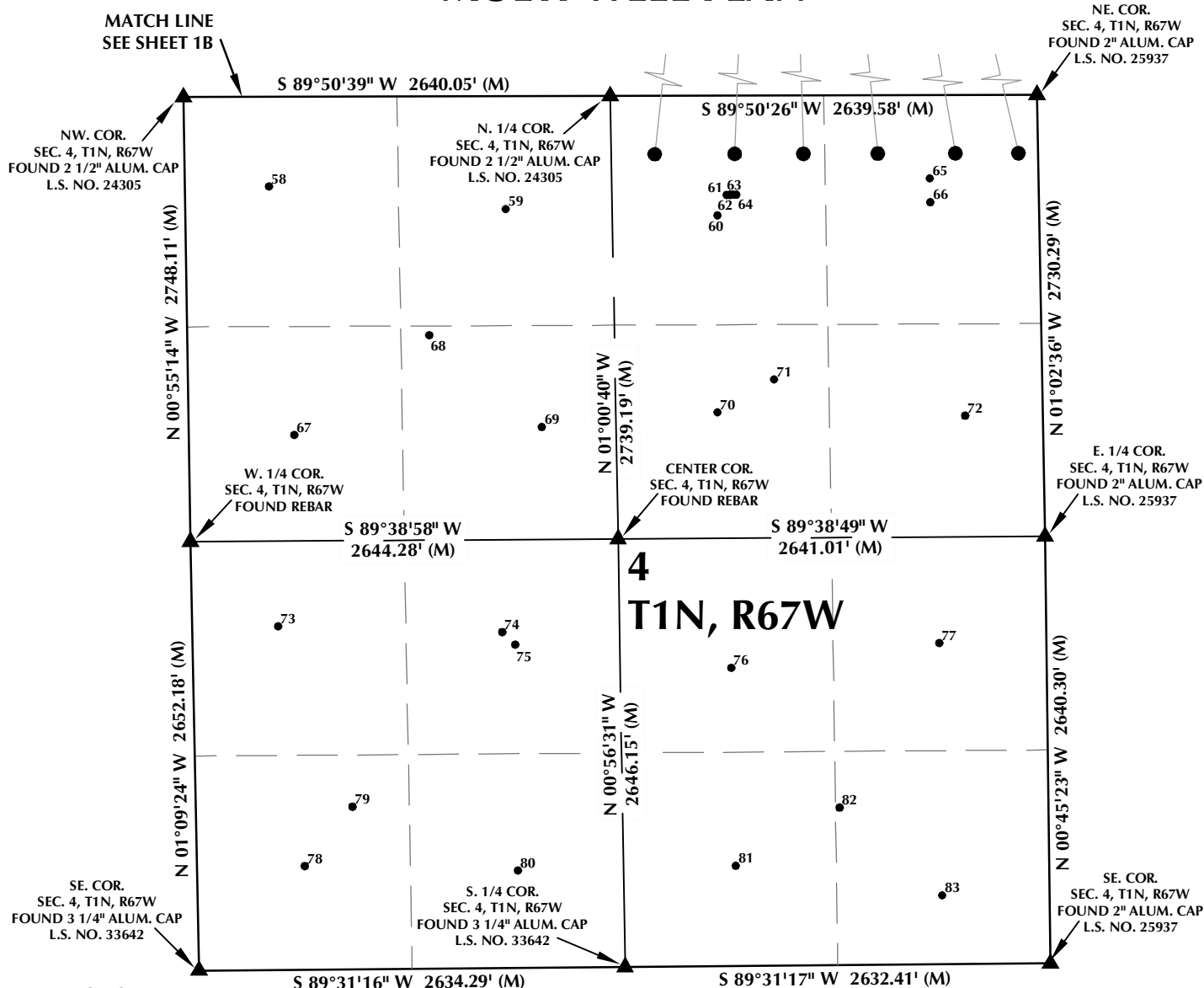
LOVELAND OFFICE
1635 Foxtrail Drive, Suite 204
Loveland, Colorado 80538
Phone 970-776-4331

DRAFTED BY:	LMO	CHECKED BY:	BJR	SHEET NO:
DATE DRAFTED:	8/14/14	DATE SURVEYED:	8/4/14	1A
REVISED:		FILE NAME:	13-112	1A OF 2

\\ANADARKO\2013\2013_112_COLORADO_T2NR67W_SEC28\PLATS\HUNZIKER 15C-28HZ MULTI-WELL PLAN SHEET 1.dwg, 8/13/2014 9:42:28 PM, jake



MULTI-WELL PLAN



WELL NOTES:

HUNZIKER 28N-28HZ
 SURFACE: 433' FSL, 1713' FEL
 BOTTOM HOLE: 460' FNL, 2370' FEL

HUNZIKER 28N-4HZ
 SURFACE: 433' FSL, 1698' FEL
 BOTTOM HOLE: 360' FNL, 2370' FEL

HUNZIKER 2C-28HZ
 SURFACE: 433' FSL, 1683' FEL
 BOTTOM HOLE: 460' FNL, 1875' FEL

HUNZIKER 2N-4HZ
 SURFACE: 433' FSL, 1668' FEL
 BOTTOM HOLE: 360' FNL, 1875' FEL

HUNZIKER 27N-28HZ
 SURFACE: 433' FSL, 1653' FEL
 BOTTOM HOLE: 460' FNL, 1440' FEL

HUNZIKER 27C-4HZ
 SURFACE: 433' FSL, 1638' FEL
 BOTTOM HOLE: 360' FNL, 1450' FEL

HUNZIKER 1N-28HZ
 SURFACE: 433' FSL, 1623' FEL
 BOTTOM HOLE: 460' FNL, 1090' FEL

HUNZIKER 1N-4HZ
 SURFACE: 433' FSL, 1608' FEL
 BOTTOM HOLE: 360' FNL, 990' FEL

HUNZIKER 1C-28HZ
 SURFACE: 433' FSL, 1593' FEL
 BOTTOM HOLE: 460' FNL, 510' FEL

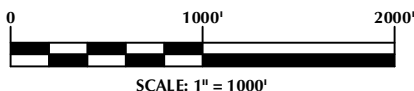
HUNZIKER 26N-4HZ
 SURFACE: 433' FSL, 1578' FEL
 BOTTOM HOLE: 360' FNL, 510' FEL

HUNZIKER 26N-28HZ
 SURFACE: 433' FSL, 1563' FEL
 BOTTOM HOLE: 460' FNL, 120' FEL

HUNZIKER 26C-4HZ
 SURFACE: 433' FSL, 1548' FEL
 BOTTOM HOLE: 360' FNL, 120' FEL

NOTES:

- ▲ INDICATES FOUND SECTION CORNER
- INDICATES CALCULATED CORNER
- BASIS OF BEARING DERIVED FROM COLORADO COORDINATE SYSTEM 1983 NORTH ZONE UNLESS OTHERWISE NOTED.
- ALL MEASURED DISTANCES ARE GRID.
- COMBINED SCALE FACTOR: .99972257 WELL FOOTAGES ARE MEASURED AT RIGHT ANGLES TO THE SECTION LINES.



WELL PAD - HUNZIKER 27C-4HZ

MULTI-WELL PLAN
 HUNZIKER 28N-28HZ, HUNZIKER 28N-4HZ,
 HUNZIKER 2C-28HZ, HUNZIKER 2N-4HZ,
 HUNZIKER 27N-28HZ, HUNZIKER 27C-4HZ,
 HUNZIKER 1N-28HZ, HUNZIKER 1N-4HZ,
 HUNZIKER 1C-28HZ, HUNZIKER 26N-4HZ,
 HUNZIKER 26N-28HZ & HUNZIKER 26C-4HZ
 LOCATED IN SECTIONS 28 & 33, T2N, R67W, 6TH P.M. &
 LOCATED IN SECTION 4, T1N, R67W, 6TH P.M.
 WELD COUNTY, COLORADO

**Kerr-McGee Oil &
 Gas Onshore L.P.**
 1099 18th Street
 Denver, Colorado 80202



CONSULTING, LLC

SHERIDAN OFFICE
 2155 North Main Street
 Sheridan, Wyoming 82801
 Phone 307-674-0609

LOVELAND OFFICE
 1635 Foxtrail Drive, Suite 204
 Loveland, Colorado 80538
 Phone 970-776-4331

DRAFTED BY:	LMO	CHECKED BY:	BJR	SHEET NO:
DATE DRAFTED:	8/14/14	DATE SURVEYED:	8/4/14	1C
REVISED:		FILE NAME:	13-112	1C OF 2

MULTI-WELL PLAN

SECTION 28, T2N, R67W

NUMBER	WELL NAME	NAD 83	
		LATITUDE	LONGITUDE
1	CLEVELAND 8	40.114675°	-104.903345°
2	HEISMAN V 28-4	40.114542°	-104.902824°
3	HEISMAN V 28-19	40.113203°	-104.900202°
4	CLEVELAND 1	40.114629°	-104.898648°
5	HSR-BLACK 3-28A	40.114926°	-104.898269°
6	HEISMAN V 28-3	40.115092°	-104.897400°
7	JOHN HORST B 1	40.115238°	-104.893238°
8	JOHN HORST B 2	40.114750°	-104.888541°
9	HEISMAN V 28-5	40.111325°	-104.903186°
10	CLEVELAND 2	40.111029°	-104.902823°
11	HART B GAS UNIT - TRUE 1	40.111936°	-104.901479°
12	CLEVELAND 7	40.111064°	-104.897945°
13	HEISMAN V 28-6	40.111251°	-104.897765°
14	ENERGY MINERALS UNIT B 1	40.110966°	-104.893369°
15	MARTIN HART C GAS UNIT 1	40.112417°	-104.892054°
16	MARVIN E. SCHUTT UNIT 1	40.110765°	-104.888545°
17	*CLEVELAND 6	40.107038°	-104.903070°
18	HEISMAN V 28-12	40.105960°	-104.901014°
19	HEISMAN V 28-25	40.105983°	-104.900980°
20	HART B GAS UNIT 2	40.106088°	-104.900997°
21	CLEVELAND 3	40.107934°	-104.899211°
22	HEISMAN V 28-20	40.107845°	-104.898155°
23	HEISMAN V 28-11	40.107858°	-104.898123°
24	BUSKER 11-28A	40.107947°	-104.898040°
25	*WALTER HUNZIKER 3	40.107345°	-104.893389°
26	HUNZIKER 9-28A	40.107974°	-104.889266°
27	*WALTER HUNZIKER 4	40.107277°	-104.888743°
28	*CLEVELAND 4	40.104290°	-104.903085°
29	*CLEVELAND 4-X	40.104425°	-104.902898°
30	HEISMAN V 28-13	40.104281°	-104.902044°
31	*CLEVELAND 5	40.103394°	-104.897959°
32	HEISMAN V 28-14	40.103421°	-104.897528°
33	WALTER HUNZIKER 1	40.103850°	-104.893305°
34	MARTIN T. HART UNIT C 2	40.104788°	-104.892221°
35	WALTER HUNZIKER 2	40.103334°	-104.888695°

NOTES:

- * INDICATES EXISTING WELLS THAT WERE NOT SURVEYED BUT DERIVED FROM COLORADO OIL AND GAS CONSERVATION COMMISSION (COGCC).

**EXISTING WELL EXHIBIT
SECTION 28, T2N, R67W, 6TH P.M.
WELD COUNTY, COLORADO**

**Kerr-McGee Oil &
Gas Onshore L.P.**
1099 18th Street
Denver, Colorado 80202



CONSULTING, LLC

SHERIDAN OFFICE
2155 North Main Street
Sheridan, Wyoming 82801
Phone 307-674-0609

LOVELAND OFFICE
1635 Foxtrail Drive, Suite 204
Loveland, Colorado 80538
Phone 970-776-4331

DRAFTED BY:	APF	CHECKED BY:	BJR	SHEET NO: 2A 2A OF 2
DATE DRAFTED:	8/14/14	DATE SURVEYED:	8/4/14	
REVISED:		FILE NAME:	13-112	

MULTI-WELL PLAN SECTION 33, T2N, R67W

NUMBER	WELL NAME	NAD 83	
		LATITUDE	LONGITUDE
36	SUCKLA G UNIT 2	40.100275°	-104.902782°
37	SUCKLA FARMS INC. B 2	40.099117°	-104.899101°
38	SUCKLA G UNIT 1	40.100242°	-104.898078°
39	SUCKLA FARMS A 2	40.100804°	-104.893481°
40	SUCKLA A UNIT 1	40.100292°	-104.888876°
41	SUCKLA D UNIT 1	40.096677°	-104.902796°
42	SUCKLA D UNIT 2	40.096675°	-104.898192°
43	SUCKLA FARMS C 2	40.096962°	-104.893374°
44	SUCKLA FARMS B 1	40.098407°	-104.891240°
45	SUCKLA FARMS C 3	40.096690°	-104.888222°
46	*CARL A MILLER A 3	40.092920°	-104.902949°
47	HSR-TROUDT 11-33A	40.093584°	-104.898604°
48	*CARL A MILLER 1	40.092898°	-104.898233°
49	JAMES S HALEY TRUSTEE 3	40.092709°	-104.893768°
50	HSR-TROUDT 9-33A	40.093488°	-104.888834°
51	*JAMES S HALEY TRUSTEE 1	40.092835°	-104.888895°
52	CARL A MILLER A 2	40.089290°	-104.903096°
53	*CARL A MILLER UNIT C 1	40.090099°	-104.902085°
54	CARL A MILLER A 4	40.088975°	-104.897679°
55	JAMES S HALEY TRUSTEE 2	40.089370°	-104.893585°
56	CARL A. MILLER UNIT C 2	40.090989°	-104.891591°
57	*JAMES S HALEY TRUSTEE 4	40.089628°	-104.888842°

NOTES:

- * INDICATES EXISTING WELLS THAT WERE NOT SURVEYED BUT DERIVED FROM COLORADO OIL AND GAS CONSERVATION COMMISSION (COGCC).

**EXISTING WELL EXHIBIT
SECTION 33, T2N, R67W, 6TH P.M.
WELD COUNTY, COLORADO**

**Kerr-McGee Oil &
Gas Onshore L.P.**
1099 18th Street
Denver, Colorado 80202



CONSULTING, LLC

SHERIDAN OFFICE
2155 North Main Street
Sheridan, Wyoming 82801
Phone 307-674-0609

LOVELAND OFFICE
1635 Foxtrail Drive, Suite 204
Loveland, Colorado 80538
Phone 970-776-4331

DRAFTED BY:	APF	CHECKED BY:	BJR	SHEET NO: 2B 2B OF 2
DATE DRAFTED:	8/14/14	DATE SURVEYED:	8/4/14	
REVISED:		FILE NAME:	13-112	

MULTI-WELL PLAN SECTION 4, T1N, R67W

NUMBER	WELL NAME	NAD 83	
		LATITUDE	LONGITUDE
58	*FERN MILLER WIKSTRAND 3	40.086055°	-104.903463°
59	*FERN MILLER WIKSTRAND 1	40.085645°	-104.898232°
60	HEIN 3	40.085512°	-104.893548°
61	GITTLEIN 7-4	40.085859°	-104.893344°
62	GITTLEIN 2-4	40.085860°	-104.893275°
63	GITTLEIN 17-4	40.085861°	-104.893205°
64	GITTLEIN 8-4	40.085861°	-104.893132°
65	*GITTLEIN 1-4A	40.086114°	-104.888848°
66	HEIN 2	40.085710°	-104.888844°
67	FERN MILLER WIKSTRAND 2	40.081836°	-104.902938°
68	*DONALD E. MILLER UNIT C 2	40.083511°	-104.899936°
69	*FERN MILLER WIKSTRAND 4	40.081941°	-104.897464°
70	*HEIN 1	40.082172°	-104.893581°
71	*WILLARD HEIN GAS UNIT 1	40.082720°	-104.892325°
72	HEIN 4	40.082083°	-104.888105°
73	DONALD E MILLER B 3	40.078589°	-104.903326°
74	MACE 11-4	40.078468°	-104.898369°
75	DONALD E MILLER ET AL B 1	40.078254°	-104.898088°
76	MCCANNON UNIT 2	40.077831°	-104.893312°
77	VERA L MCCANNON 1	40.078228°	-104.888710°
78	MILLER*DONALD E B-2	40.074519°	-104.902769°
79	*DONALD E. MILLER UNIT C 1	40.075521°	-104.901707°
80	*DONALD E MILLER B 4	40.074419°	-104.898061°
81	MCCANNON UNIT 1	40.074473°	-104.893241°
82	*WILLARD HEIN GAS UNIT 2	40.075448°	-104.890941°
83	VERA L MCCANNON 2	40.073949°	-104.888686°

NOTES:

- * INDICATES EXISTING WELLS THAT WERE NOT SURVEYED BUT DERIVED FROM COLORADO OIL AND GAS CONSERVATION COMMISSION (COGCC).

**EXISTING WELL EXHIBIT
SECTION 4, T1N, R67W, 6TH P.M.
WELD COUNTY, COLORADO**

**Kerr-McGee Oil &
Gas Onshore L.P.
1099 18th Street
Denver, Colorado 80202**



CONSULTING, LLC

SHERIDAN OFFICE
2155 North Main Street
Sheridan, Wyoming 82801
Phone 307-674-0609

LOVELAND OFFICE
1635 Foxtrail Drive, Suite 204
Loveland, Colorado 80538
Phone 970-776-4331

DRAFTED BY:	APF	CHECKED BY:	BJR	2C SHEET NO: 2C OF 2
DATE DRAFTED:	8/14/14	DATE SURVEYED:	8/4/14	
REVISED:		FILE NAME:	13-112	