

# HALLIBURTON

iCem<sup>®</sup> Service

**CONOCO/PHILLIPS COMPANY EBUSINESS**

**For:**

Date: Monday, September 29, 2014

**1H**

PROSPER FARMS

Case 1

Sincerely,

## Legal Notice

---

### Warning Disclaimer

Although the information contained in this report is based on sound engineering practices, the copyright owner(s) does (do) not accept any responsibility whatsoever, in negligence or otherwise, for any loss or damage arising from the possession or use of the report whether in terms of correctness or otherwise. The application, therefore, by the user of this report or any part thereof, is solely at the user's own risk.

### Limitations of Liability

Except as expressly set forth herein, there are no representations or warranties by Halliburton, express or implied, including implied warranties of merchantability and/or fitness for a particular purpose. In no event will Halliburton or its suppliers be liable for consequential, incidental, special, punitive or exemplary damages (including, without limitation, loss of data, profits, use of hardware, or software). Customer accepts full responsibility for any investment made based on results from the Software. Any interpretations, analyses or modeling of any data, including, but not limited to Customer data, and any recommendation or decisions based upon such interpretations, analyses or modeling are opinions based upon inferences from measurements and empirical relationships and assumptions, which inferences and assumptions are not infallible, and with respect to which professional may differ. Accordingly, Halliburton cannot and does not warrant the accuracy, correctness or completeness of any such interpretation, recommendation, modeling or other products of the Software Product. As such, any interpretation, recommendation or modeling resulting from the Software for the purpose of any drilling, well treatment, production or financial decision will be at the sole risk of Customer. Under no circumstances will Halliburton or its suppliers be liable for any damages.

## Table of Contents

1.0	Job Design	4
1.1	Time of Stages	4
2.0	Hydraulics Summary	5
3.0	Temperature Modeling	5
4.0	Real-Time Job Summary	5
4.1	Stage Summary - Liquid Volume, Density, & Design Shutdown	5
4.2	Stage Summary - Pump Pressure & ECD	5
4.3	Stage Summary - Pump Rate & Nitrogen Rate	5
4.4	Shutdown Summary	6
4.1	Job Event Log	6
5.0	Custom Graphs	8
5.1	Custom Graph	8
6.0	Appendix	9
6.1	One-Minutes Real-Time Data Listing	10

## 1.0 Job Design

### 1.1 Time of Stages

Graph Label	Time (min)	Stage Starts Pumping	Stage Enters Annulus
①	0	Rig-Down Completed	
②	0	Rig-Down Equipment	
③	0	Depart Location for Service Center or Other Site	
④	0	Post-Job Safety Meeting (Pre Rig-Down)	
⑤	0	Other	
⑥	0	Pre-Convoy Safety Meeting	

2.0 Hydraulics Summary

3.0 Temperature Modeling

4.0 Real-Time Job Summary

---

4.1 Stage Summary - Liquid Volume, Density, & Design Shutdown

---

4.2 Stage Summary - Pump Pressure & ECD

---

4.3 Stage Summary - Pump Rate & Nitrogen Rate

---

4.4 Shutdown Summary

---

# HALLIBURTON

CONOCO/PHILLIPS COMPANY EBUSINESS  
CONOCO PHILLIPS PROSPER FARMS SURFACE CASING

Case 1

## 4.1 Job Event Log

Type	Seq. No.	Activity	Graph Label	Date	Time	Source	Comb Pump Rate (bbl/min)	DH Density (ppg)	DS Pump Press (psi)	Comment
Event	1	Call Out	Call Out	9/29/2014	03:00:00	USER				Called @ 0300 to be on location @ 0700 in Watkins, Co
Event	2	Other	Other	9/29/2014	04:00:00	USER				Loaded all Equipment for Job, Spoke with customer Requested Dye
Event	3	Pre-Convoy Safety Meeting	Pre-Convoy Safety Meeting	9/29/2014	04:45:00	USER				Discussed Route of Travel, Wildlife, Traffic
Event	4	Depart from Service Center or Other Site	Depart Service Center for Location	9/29/2014	05:00:00	USER				Departed Service Center for Location, Notified Journey Management
Event	5	Arrive at Location from Service Center	Arrive at Location from Service Center	9/29/2014	06:20:00	USER				Arrive on Location, Notified Journey Management, Discussed Job Procedure with Customer
Event	6	Pre-Rig Up Safety Meeting	Pre-Rig Up Safety Meeting	9/29/2014	06:45:00	USER				Discussed Spotting of all Equipment, Using Spotters, Eyes on Path, Line of Fire, Hammer Swings, Pinch Points
Event	7	Rig-Up Equipment	Rig-Up Equipment	9/29/2014	07:15:00	USER				Rig up all Equipment
Event	8	Rig-Up Completed	Rig-Up Completed	9/29/2014	09:00:00	USER	0.00	8.27	-1.00	Rig up Complete
Event	9	Pre-Job Safety Meeting	Pre-Job Safety Meeting	9/29/2014	09:01:00	USER	0.00	8.27	-1.00	Discussed ISA with whole Crew, Discussed Muster Area, Red Zones, Job Procedure, Caution Taped Area
Event	10	Start Job	Start Job	9/29/2014	09:27:31	COM6	0.00	8.14	-8.00	
Event	11	Test Lines	Test Lines	9/29/2014	09:29:23	COM6	0.00	8.46	-4.00	Test Lines @ 3000 psi
Event	12	Pump Spacer 1	Pump Spacer 1	9/29/2014	09:33:14	COM6	0.00	8.31	-5.00	Pump 10 bbls of Dyed Fresh Water
Event	13	Pump Spacer 2	Pump Spacer 2	9/29/2014	09:41:22	COM6	1.40	8.47	21.00	Pump 50 bbls of Clean Spacer @ 10.0 ppg

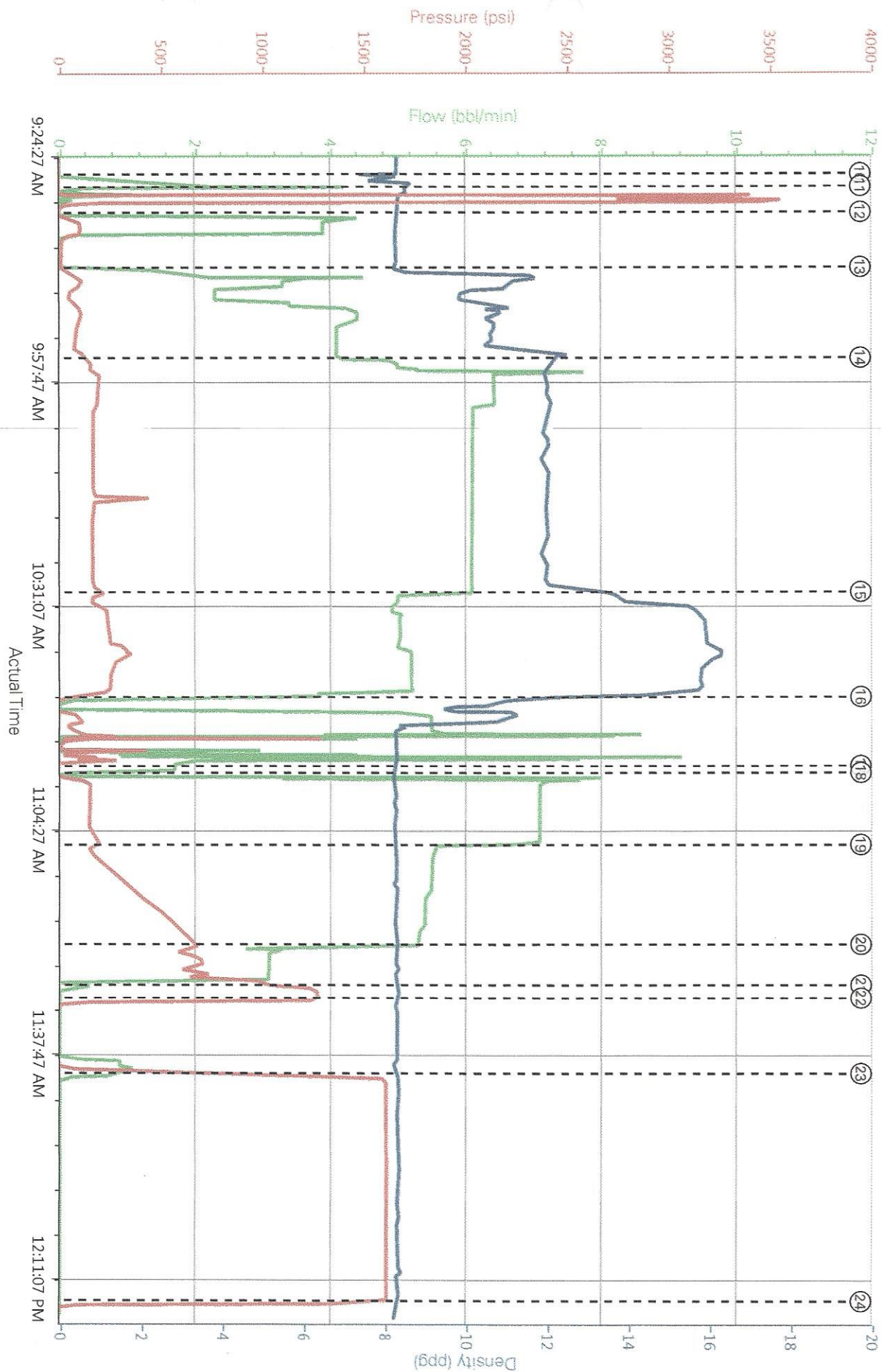


# HALLIBURTON

CONOCO/PHILLIPS COMPANY EBUSINESS  
CONOCO PHILLIPS PROSPER FARMS SURFACE CASING  
Case 1

Event	14	Pump Lead Cement	Pump Lead Cement	9/29/2014	09:54:42	COM6	5.00	12.21	152.00	Pump 219 bbls of Lead Cement @ 12.0 ppg (480skts)
Event	15	Pump Tail Cement	Pump Tail Cement	9/29/2014	10:29:28	COM6	5.00	13.72	174.00	Pump 71.6 bbls of Tail Cment @ 15.8 ppg (350skts)
Event	16	Shutdown	Shutdown	9/29/2014	10:45:03	USER	0.70	11.38	3.00	Shutdown/ Wash Pumps and Lines to Pit
Event	17	Drop Top Plug	Drop Top Plug	9/29/2014	10:55:20	COM6	1.70	8.27	-19.00	Drop Top Plug
Event	18	Pump Displacement	Pump Displacement	9/29/2014	10:56:21	COM6	0.00	8.24	-17.00	Pump 167 bbls of Fresh Water Displacement
Event	19	Displ Reached Cmnt	Displ Reached Cmnt	9/29/2014	11:07:00	COM6	5.60	8.29	145.00	Displacement Reached Cement 60 bbls out on Displacement
Event	20	Slow Rate	Slow Rate	9/29/2014	11:21:47	USER	4.00	8.32	668.00	150 bbls out Slow Rate
Event	21	Bump Plug	Bump Plug	9/29/2014	11:27:51	USER	0.00	8.28	1224.00	Bump Plug 650 psi took to 1200 psi
Event	22	Check Floats	Check Floats	9/29/2014	11:29:49	USER	0.00	8.29	1068.00	Checked Floats, Floats Held, 1.5 bbls back
Event	23	Other	Casing Test	9/29/2014	11:40:58	USER	0.70	8.34	1448.00	1500 psi hold for 30 min
Event	24	Other	Casing Test Fished	9/29/2014	12:14:40	USER	0.00	8.30	1221.00	1611 psi Final
Event	25	Other	Psi off	9/29/2014	12:15:00	USER	0.00	8.30	38.00	Pressured Off
Event	26	Post-Job Safety Meeting (Pre Rig-Down)	Post-Job Safety Meeting (Pre Rig-Down)	9/29/2014	12:16:00	USER	0.00	8.27	-15.00	Post Job Safety Meeting with Crew, Discussed JSA, Rigdown Procedure, Hammer Swings, Pinch Points, Eyes on Path, Line of Fire
Event	27	Rig-Down Equipment	Rig-Down Equipment	9/29/2014	12:16:01	USER	0.00	8.28	-15.00	Rig Down all Equipment
Event	28	Rig-Down Completed	Rig-Down Completed	9/29/2014	14:00:00	USER				Rig Down Completed
Event	29	Pre-Convoy Safety Meeting	Pre-Convoy Safety Meeting	9/29/2014	14:01:00	USER				Discussed Route of Travel, Wildlife, Traffic
Event	30	Depart Location for Service Center or Other Site	Depart Location for Service Center or Other Site	9/29/2014	14:20:00	USER				Departed location for Service Center, Notified Journey Management

# CONOCO PHILLIPS PROSPER FARM 4-65 11-12 WELL#1H 9 5/8 SURFACE CASING



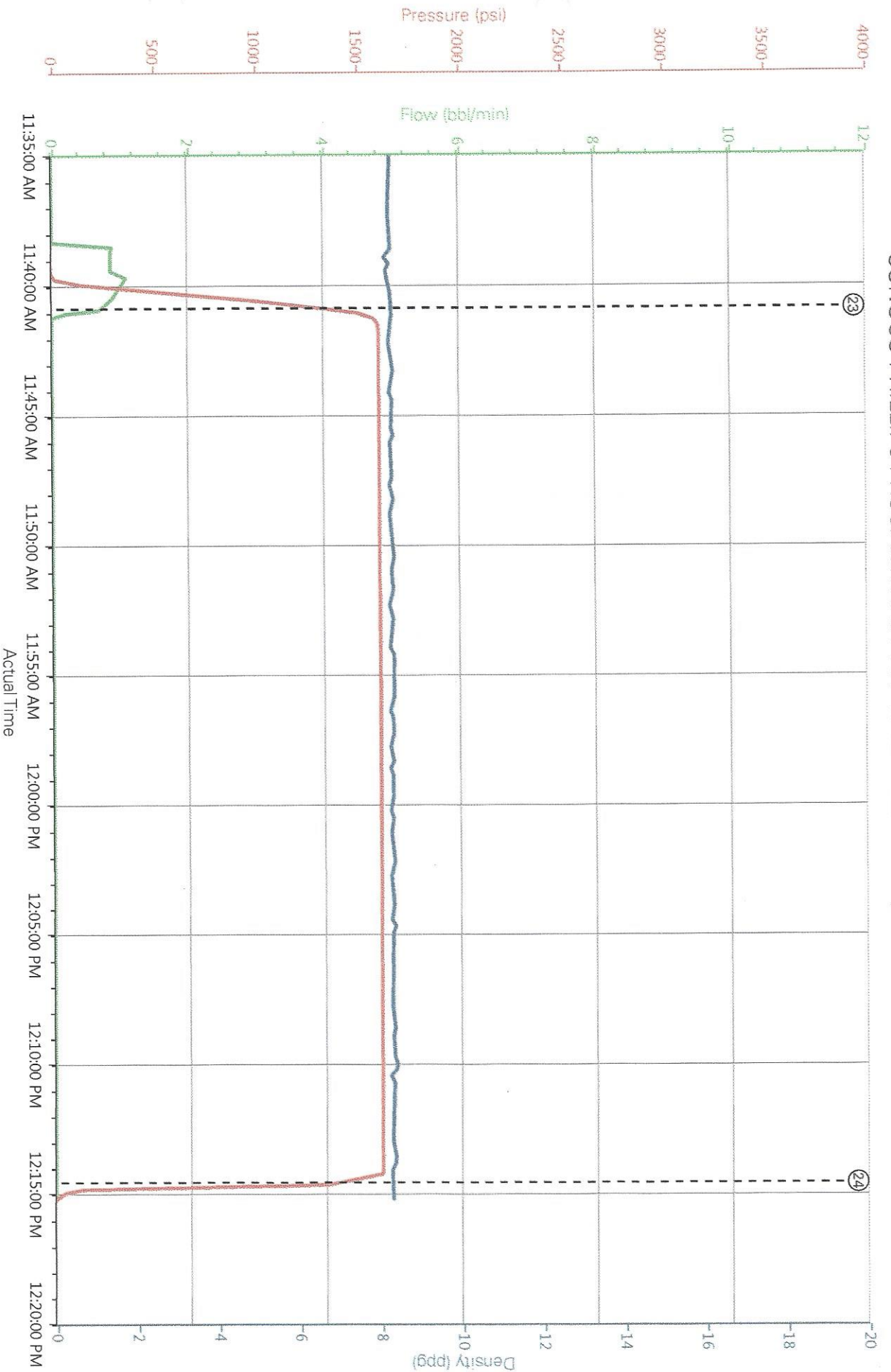
Comb Pump Rate (bbl/min) DH Density (ppg) DS Pump Press (psi)

Actual Time

Arrive at Location from Service Center 08/27/11 ⑦ Rig-Up Equipment 08/27/11 ⑨ Pre-Job Safety Meeting 08/27/11 ⑪ Test Lines 08/29/11 ⑬ Pump Spacer 2 11/4/8/47/23 ⑮ Pump  
 Rig-Up Safety Meeting 08/27/11 ⑧ Rig-Up Completed 08/27/11 ⑩ Start Job 08/14/11 ⑫ Pump Spacer 1 08/29/11 ⑭ Pump Lead Cement 5/12/18/153 ⑯ Shi



# CONOCO PHILLIPS PROSPER FARM 4-65 11-12 WELL#1H 9 5/8 SURFACE CASING



Comb Pump Rate (bbl/min) DH Density (ppg) DS Pump Press (psi)

Actual Time

Arrive at Location from Service Center n/a/n/a/n/a ⑦ Rig-Up Equipment n/a/n/a/n/a ⑨ Pre-Job Safety Meeting 0:8:27;-1 ⑪ Test Lines 0:8:46;-4 ⑬ Pump Spacer 2 1:4:8:47;23 ⑮ Pump  
Rig-Up Safety Meeting n/a/n/a/n/a ⑧ Rig-Up Completed 0:8:27;-1 ⑩ Start Job 0:8:14;-8 ⑫ Pump Spacer 1 0:8:29;-5 ⑭ Pump Lead Cement 5:12:18;153 ⑯ Sh

The Road to Excellence Starts with Safety

Sold To #: 352431	Ship To #: 3471380	Quote #: 0021936185	Sales Order #: 0901699551
Customer: CONOCO/PHILLIPS COMPANY EBUSINESS		Customer Rep:	
Well Name: PROSPER FARMS 4-65 11-12	Well #: 1 H	API/UWI #: 05-005-07223-00	
Field: WILDCAT	City (SAP): WATKINS	County/Parish: ARAPAHOE	State: COLORADO
Legal Description: NW NW-11-4S-65W-660FNL-350FWL			
Contractor:		Rig/Platform Name/Num: H&P 280	
Job BOM: 7521			
Well Type: HORIZONTAL OIL			
Sales Person: HALAMERICA\HX38199		Srv Supervisor: Edur Duran	
Job			

Formation Name			
Formation Depth (MD)	Top		Bottom
Form Type	BHST		
Job depth MD	2203ft		Job Depth TVD
Water Depth			Wk Ht Above Floor
Perforation Depth (MD)	From		To

Well Data										
Description	New / Used	Size in	ID in	Weight lbm/ft	Thread	Grade	Top MD ft	Bottom MD ft	Top TVD ft	Bottom TVD ft
Casing		16	15.5				0	100		
Casing		9.625	8.921	36	STC	J-55	0	2203		
Open Hole Section			13.5				100	2211		

Tools and Accessories									
Type	Size in	Qty	Make	Depth ft		Type	Size in	Qty	Make
Guide Shoe	9.625	1		2203		Top Plug	9.625	0	HES
Float Shoe	9.625	1				Bottom Plug	9.625	0	HES
Float Collar	9.625	1				SSR plug set	9.625	1	HES
Insert Float	9.625	1				Plug Container	9.625	1	HES
Stage Tool	9.625	1				Centralizers	9.625	1	HES

Miscellaneous Materials										
Gelling Agt		Conc		Surfactant		Conc		Acid Type		Qty
Treatment Fld		Conc		Inhibitor		Conc		Sand Type		Size

Fluid Data										
Stage/Plug #: 1										
Fluid #	Stage Type	Fluid Name	Qty	Qty UoM	Mixing Density lbm/gal	Yield ft <sup>3</sup> /sack	Mix Fluid Gal	Rate bbl/min	Total Mix Fluid Gal	
1	Clean Spacer III	CLEANSPECER III	50	bbl	10.5	3.86	35.1			
0 gal/bbl		FRESH WATER								
Fluid #	Stage Type	Fluid Name	Qty	Qty UoM	Mixing Density lbm/gal	Yield ft <sup>3</sup> /sack	Mix Fluid Gal	Rate bbl/min	Total Mix Fluid Gal	

2	SwiftCem B2	SWIFTCEM (TM) SYSTEM	480	sack	12	2.56		5	15.09
15.09 Gal		FRESH WATER							
Fluid #	Stage Type	Fluid Name	Qty	Qty UoM	Mixing Density lbm/gal	Yield ft3/sack	Mix Fluid Gal	Rate bbl/min	Total Mix Fluid Gal
3	HalCem	HALCEM (TM) SYSTEM	350	sack	15.8	1.15		5	4.98
94 lbm		CMT - PREMIUM - CLASS G REG OR TYPE V, BULK (100003685)							
4.98 Gal		FRESH WATER							
Fluid #	Stage Type	Fluid Name	Qty	Qty UoM	Mixing Density lbm/gal	Yield ft3/sack	Mix Fluid Gal	Rate bbl/min	Total Mix Fluid Gal
4	Displacement		167	bbl	8.5				
Cement Left In Pipe		Amount	45 ft		Reason		Shoe Joint		
Comment									



## Summary Report



Crew: \_\_\_\_\_

Job Start Date: 9/29/2014

Sales Order #: 0901699551

WO #: 0901699551

PO/AFE #: NA

Customer: CONOCO/PHILLIPS COMPANY  
EBUSINESS  
UWI / API Number: 05-005-07223-00  
Well Name: PROSPER FARMS 4-65 11-12  
Well No: 1 H

Field: WILDCAT  
County/Parish: ARAPAHOE  
State: COLORADO  
Latitude: 39.723806  
Longitude: -104.639511  
Sect / Twn / Rng: 11/4/65

Job Type: CMT SURFACE  
CASING BOM  
Service Supervisor: Edur Duran

Cust Rep Name:  
Cust Rep Phone #:

## Remarks:

The Information Stated Herein Is Correct

Customer Representative Signature

Date

Customer Representative Printed Name