

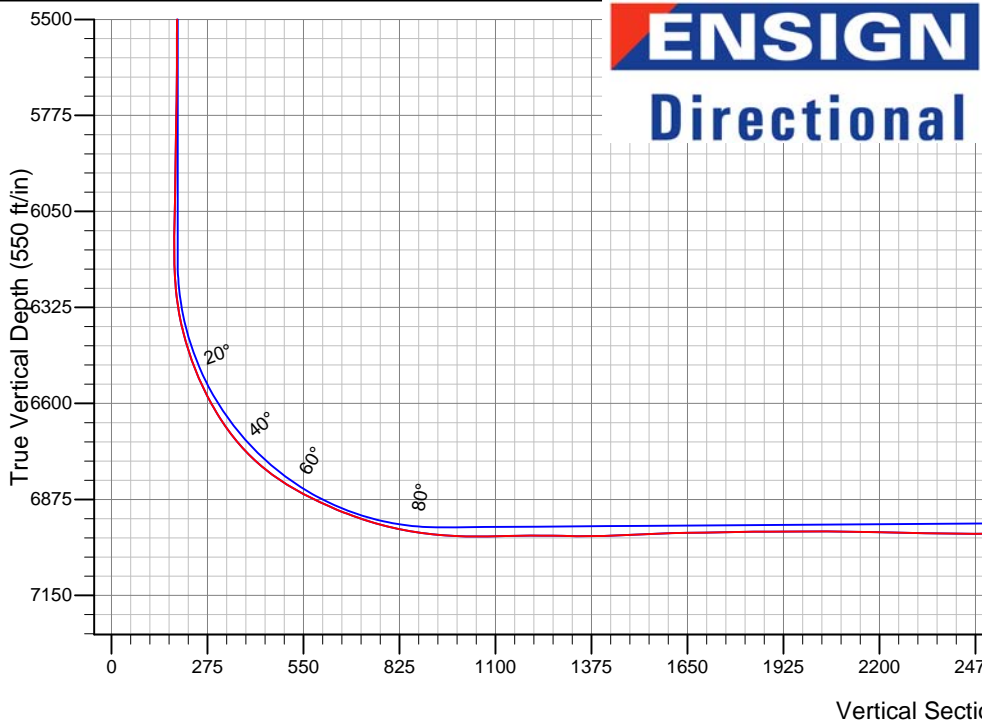
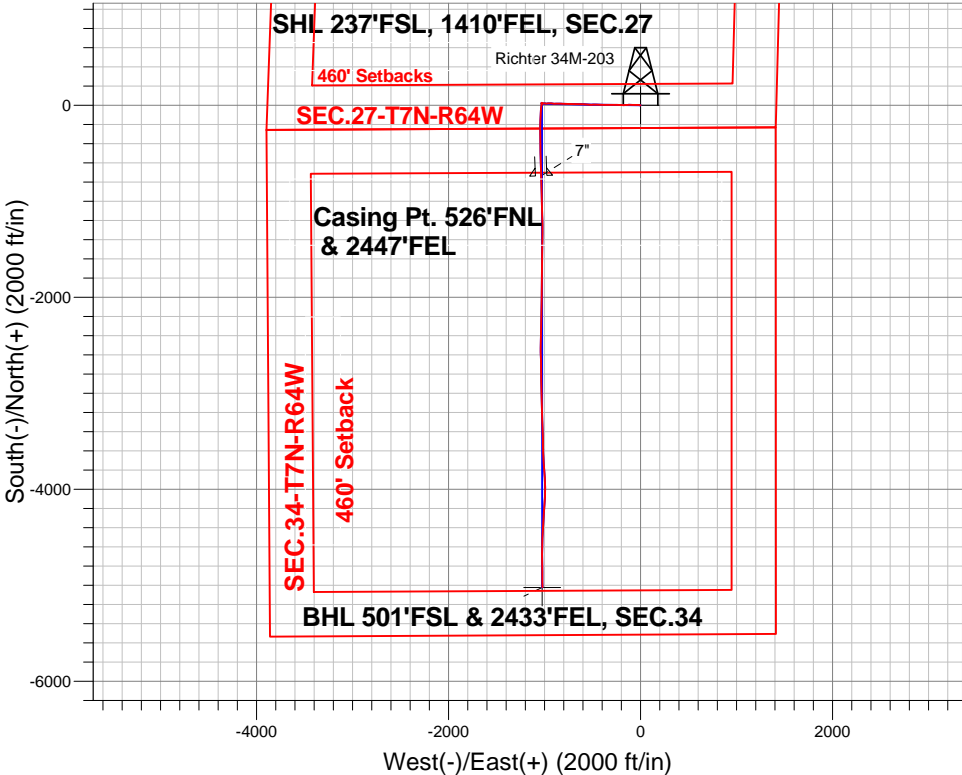
PETROLEUM DEVELOPMENT CORP Weld County CO

Well Name: **Richter 34M-203**

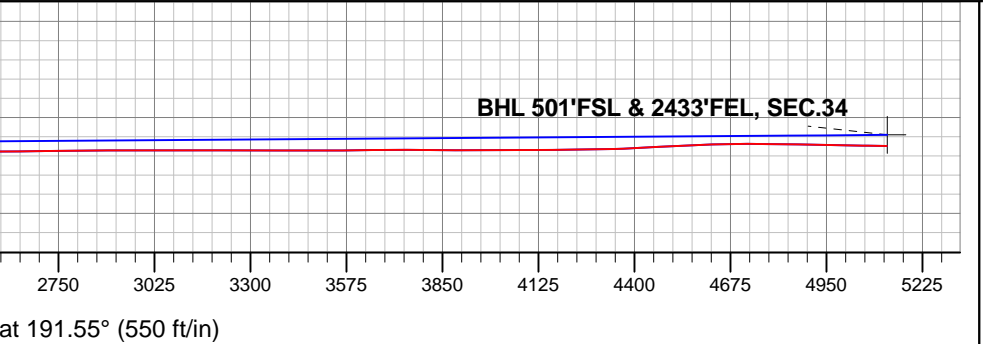
Surface Location: Richter 27T-HZ Pad Sec.27-T7N-R64W  
North American Datum 1983 , US State Plane 1983 , Colorado Northern Zone  
Ground Elevation: 4870.0  
+N/-S +E/-W Northing Easting Latitude Longitude Slot  
0.0 0.0 1440175.72 3269098.08 40.537650 -104.531810  
RKB - 23' WELL @ 4893.0ft (RKB - 23')

FINAL SURVEY

Projected Bottom Hole Location  
11812'MD 6957'TVD 5020'S & 1024'W of  
SHL 89.1 degree Incl @ 179.0 degree AZM



Richter 27T-HZ Pad Sec.27-T7N-R64W Richter 34M-203 Wellbore #1 13:48, October 21 2013	ANNOTATIONS
	No annotation data is available.
LEGEND	
+ Richter 34M-203, Wellbore #1, Plan #2 (9-30-13) V0	
□ Wellbore #1	
○ Survey #1	





# **PETROLEUM DEVELOPMENT CORP Weld County CO**

**SEC.27-T7N-R64W**

**Richter 27T-HZ Pad Sec.27-T7N-R64W**

**Richter 34M-203**

**Wellbore #1**

**Survey: Survey #1**

## **Standard Survey Report**

**18 October, 2013**

<b>Company:</b>	PETROLEUM DEVELOPMENT CORP Weld County CO	<b>Local Co-ordinate Reference:</b>	Well Richter 34M-203
<b>Project:</b>	SEC.27-T7N-R64W	<b>TVD Reference:</b>	WELL @ 4893.0ft (RKB - 23')
<b>Site:</b>	Richter 27T-HZ Pad Sec.27-T7N-R64W	<b>MD Reference:</b>	WELL @ 4893.0ft (RKB - 23')
<b>Well:</b>	Richter 34M-203	<b>North Reference:</b>	True
<b>Wellbore:</b>	Wellbore #1	<b>Survey Calculation Method:</b>	Minimum Curvature
<b>Design:</b>	Wellbore #1	<b>Database:</b>	Landmark

<b>Project</b>	SEC.27-T7N-R64W, Weld County, CO		
<b>Map System:</b>	US State Plane 1983	<b>System Datum:</b>	Mean Sea Level
<b>Geo Datum:</b>	North American Datum 1983		Using Well Reference Point
<b>Map Zone:</b>	Colorado Northern Zone		Using geodetic scale factor

Site	Richter 27T-HZ Pad Sec.27-T7N-R64W				
Site Position:		Northing:	1,440,175.74 ft	Latitude:	40.537650
From:	Lat/Long	Easting:	3,269,098.08 ft	Longitude:	-104.531810
Position Uncertainty:	0.0 ft	Slot Radius:	"	Grid Convergence:	0.63 °

Well	Richter 34M-203					
Well Position	+N-S	0.0 ft	Northing:	1,440,175.72 ft	Latitude:	40.537650
	+E-W	0.0 ft	Easting:	3,269,098.08 ft	Longitude:	-104.531810
Position Uncertainty		0.0 ft	Wellhead Elevation:	ft	Ground Level:	4,870.0 ft

<b>Wellbore</b>	Wellbore #1				
<b>Magnetics</b>	<b>Model Name</b>	<b>Sample Date</b>	<b>Declination (°)</b>	<b>Dip Angle (°)</b>	<b>Field Strength (nT)</b>
	IGRF2010	9/30/2013	8.44	67.12	52,985

<b>Design</b>	Wellbore #1				
<b>Audit Notes:</b>					
<b>Version:</b>	1.0	<b>Phase:</b>	ACTUAL	<b>Tie On Depth:</b>	0.0
<b>Vertical Section:</b>	<b>Depth From (TVD) (ft)</b>	<b>+N/-S (ft)</b>	<b>+E/-W (ft)</b>	<b>Direction (°)</b>	
	0.0	0.0	0.0	191.52	

<b>Survey Program</b>	<b>Date</b>	10/18/2013			
<b>From (ft)</b>	<b>To (ft)</b>	<b>Survey (Wellbore)</b>	<b>Tool Name</b>	<b>Description</b>	
162.0	11,812.0	Survey #1 (Wellbore #1)	MWD	MWD - Standard	

<b>Survey</b>										
<b>Measured Depth (ft)</b>	<b>Inclination (°)</b>	<b>Azimuth (°)</b>	<b>Vertical Depth (ft)</b>	<b>+N/-S (ft)</b>	<b>+E/-W (ft)</b>	<b>Vertical Section (ft)</b>	<b>Dogleg Rate (°/100ft)</b>	<b>Build Rate (°/100ft)</b>	<b>Turn Rate (°/100ft)</b>	
0.0	0.00	0.00	0.0	0.0	0.0	0.0	0.00	0.00	0.00	
1.0	0.00	271.50	1.0	0.0	0.0	0.0	0.25	0.25	0.00	
<b>SHL 237'FSL, 1410'FEL, SEC.27</b>										
162.0	0.40	271.50	162.0	0.0	-0.6	0.1	0.25	0.25	0.00	
252.0	1.10	284.00	252.0	0.2	-1.7	0.1	0.79	0.78	13.89	
342.0	2.60	287.90	341.9	1.1	-4.5	-0.1	1.67	1.67	4.33	
434.0	4.40	286.70	433.8	2.7	-9.9	-0.7	1.96	1.96	-1.30	
525.0	6.70	276.50	524.3	4.3	-18.5	-0.5	2.74	2.53	-11.21	
615.0	9.50	269.30	613.4	4.8	-31.1	1.5	3.30	3.11	-8.00	
707.0	10.50	270.70	704.0	4.8	-47.1	4.7	1.12	1.09	1.52	
799.0	12.60	271.90	794.2	5.3	-65.5	7.9	2.30	2.28	1.30	
896.0	14.10	271.20	888.5	5.9	-87.9	11.8	1.56	1.55	-0.72	

<b>Company:</b>	PETROLEUM DEVELOPMENT CORP Weld County CO	<b>Local Co-ordinate Reference:</b>	Well Richter 34M-203
<b>Project:</b>	SEC.27-T7N-R64W	<b>TVD Reference:</b>	WELL @ 4893.0ft (RKB - 23')
<b>Site:</b>	Richter 27T-HZ Pad Sec.27-T7N-R64W	<b>MD Reference:</b>	WELL @ 4893.0ft (RKB - 23')
<b>Well:</b>	Richter 34M-203	<b>North Reference:</b>	True
<b>Wellbore:</b>	Wellbore #1	<b>Survey Calculation Method:</b>	Minimum Curvature
<b>Design:</b>	Wellbore #1	<b>Database:</b>	Landmark

Survey									
Measured Depth (ft)	Inclination (°)	Azimuth (°)	Vertical Depth (ft)	+N/-S (ft)	+E/-W (ft)	Vertical Section (ft)	Dogleg Rate (°/100ft)	Build Rate (°/100ft)	Turn Rate (°/100ft)
988.0	14.70	271.60	977.6	6.4	-110.8	15.8	0.66	0.65	0.43
1,083.0	14.80	266.30	1,069.5	6.0	-134.9	21.1	1.42	0.11	-5.58
1,179.0	15.20	266.70	1,162.3	4.5	-159.7	27.5	0.43	0.42	0.42
1,274.0	14.20	268.90	1,254.1	3.5	-183.8	33.3	1.21	-1.05	2.32
1,369.0	14.50	270.50	1,346.2	3.4	-207.4	38.1	0.52	0.32	1.68
1,464.0	14.20	271.80	1,438.2	3.9	-230.9	42.3	0.46	-0.32	1.37
1,559.0	13.70	272.80	1,530.4	4.8	-253.8	46.0	0.58	-0.53	1.05
1,655.0	14.10	274.20	1,623.6	6.2	-276.8	49.2	0.54	0.42	1.46
1,750.0	14.50	272.10	1,715.7	7.5	-300.2	52.6	0.69	0.42	-2.21
1,845.0	13.80	270.00	1,807.8	7.9	-323.4	56.9	0.91	-0.74	-2.21
1,940.0	14.20	264.70	1,900.0	6.9	-346.4	62.5	1.41	0.42	-5.58
2,036.0	13.20	266.50	1,993.2	5.1	-369.0	68.7	1.13	-1.04	1.88
2,132.0	14.20	273.70	2,086.5	5.2	-391.7	73.2	2.06	1.04	7.50
2,228.0	14.30	273.70	2,179.5	6.7	-415.3	76.4	0.10	0.10	0.00
2,323.0	15.30	271.40	2,271.4	7.8	-439.6	80.2	1.22	1.05	-2.42
2,419.0	14.20	271.40	2,364.2	8.4	-464.0	84.5	1.15	-1.15	0.00
2,515.0	14.00	269.50	2,457.3	8.6	-487.4	89.0	0.53	-0.21	-1.98
2,610.0	13.20	266.30	2,549.7	7.8	-509.7	94.2	1.16	-0.84	-3.37
2,706.0	13.90	273.30	2,643.0	7.7	-532.1	98.8	1.86	0.73	7.29
2,802.0	14.50	273.30	2,736.1	9.1	-555.7	102.1	0.63	0.63	0.00
2,898.0	14.40	273.20	2,829.0	10.4	-579.6	105.6	0.11	-0.10	-0.10
2,994.0	14.00	273.00	2,922.1	11.7	-603.1	109.0	0.42	-0.42	-0.21
3,089.0	14.70	271.10	3,014.1	12.5	-626.6	112.9	0.89	0.74	-2.00
3,185.0	14.40	273.00	3,107.1	13.4	-650.7	116.9	0.59	-0.31	1.98
3,281.0	13.60	271.20	3,200.2	14.3	-673.9	120.7	0.95	-0.83	-1.88
3,376.0	13.30	271.10	3,292.6	14.7	-696.0	124.7	0.32	-0.32	-0.11
3,471.0	13.80	270.50	3,385.0	15.0	-718.3	128.8	0.55	0.53	-0.63
3,567.0	13.50	267.70	3,478.2	14.7	-740.9	133.7	0.76	-0.31	-2.92
3,662.0	12.90	269.80	3,570.7	14.2	-762.6	138.5	0.81	-0.63	2.21
3,757.0	14.70	278.40	3,663.0	15.9	-785.1	141.3	2.87	1.89	9.05
3,852.0	13.20	271.60	3,755.2	18.0	-807.9	143.8	2.34	-1.58	-7.16
3,948.0	14.80	270.70	3,848.3	18.4	-831.1	148.0	1.68	1.67	-0.94
4,043.0	15.50	271.60	3,940.0	18.9	-855.9	152.5	0.78	0.74	0.95
4,138.0	14.50	270.70	4,031.8	19.4	-880.5	156.9	1.08	-1.05	-0.95
4,233.0	14.80	270.50	4,123.7	19.7	-904.5	161.4	0.32	0.32	-0.21
4,329.0	13.60	273.90	4,216.8	20.5	-928.1	165.3	1.52	-1.25	3.54
4,424.0	11.50	268.80	4,309.5	21.1	-948.7	168.9	2.50	-2.21	-5.37
4,519.0	10.00	267.50	4,402.8	20.6	-966.4	172.9	1.60	-1.58	-1.37
4,614.0	8.80	268.10	4,496.6	20.0	-981.9	176.6	1.27	-1.26	0.63
4,709.0	6.60	273.20	4,590.7	20.0	-994.6	179.1	2.42	-2.32	5.37
4,804.0	5.40	273.30	4,685.2	20.6	-1,004.5	180.5	1.26	-1.26	0.11
4,900.0	4.30	268.60	4,780.8	20.7	-1,012.6	182.0	1.22	-1.15	-4.90
4,995.0	1.70	277.90	4,875.7	20.9	-1,017.6	182.9	2.78	-2.74	9.79
5,090.0	1.10	283.20	4,970.7	21.3	-1,019.9	182.9	0.65	-0.63	5.58
5,185.0	0.70	229.70	5,065.7	21.1	-1,021.2	183.4	0.93	-0.42	-56.32
5,280.0	1.10	228.90	5,160.7	20.1	-1,022.3	184.5	0.42	0.42	-0.84
5,376.0	1.10	234.70	5,256.6	19.0	-1,023.8	185.9	0.12	0.00	6.04
5,471.0	1.40	243.30	5,351.6	17.9	-1,025.6	187.3	0.37	0.32	9.05
5,566.0	1.40	301.50	5,446.6	18.0	-1,027.6	187.7	1.43	0.00	61.26
5,661.0	1.20	289.00	5,541.6	18.9	-1,029.5	187.1	0.36	-0.21	-13.16
5,757.0	0.60	305.50	5,637.6	19.6	-1,030.9	186.8	0.67	-0.63	17.19
5,852.0	1.10	331.00	5,732.5	20.6	-1,031.7	185.9	0.65	0.53	26.84
5,947.0	1.20	25.70	5,827.5	22.3	-1,031.7	184.2	1.12	0.11	57.58
6,042.0	1.10	8.60	5,922.5	24.1	-1,031.2	182.4	0.37	-0.11	-18.00

<b>Company:</b>	PETROLEUM DEVELOPMENT CORP Weld County CO	<b>Local Co-ordinate Reference:</b>	Well Richter 34M-203
<b>Project:</b>	SEC.27-T7N-R64W	<b>TVD Reference:</b>	WELL @ 4893.0ft (RKB - 23')
<b>Site:</b>	Richter 27T-HZ Pad Sec.27-T7N-R64W	<b>MD Reference:</b>	WELL @ 4893.0ft (RKB - 23')
<b>Well:</b>	Richter 34M-203	<b>North Reference:</b>	True
<b>Wellbore:</b>	Wellbore #1	<b>Survey Calculation Method:</b>	Minimum Curvature
<b>Design:</b>	Wellbore #1	<b>Database:</b>	Landmark

Survey									
Measured Depth (ft)	Inclination (°)	Azimuth (°)	Vertical Depth (ft)	+N/-S (ft)	+E/-W (ft)	Vertical Section (ft)	Dogleg Rate (°/100ft)	Build Rate (°/100ft)	Turn Rate (°/100ft)
6,138.0	1.00	17.40	6,018.5	25.9	-1,030.8	180.6	0.20	-0.10	9.17
6,233.0	0.50	65.00	6,113.5	26.8	-1,030.2	179.5	0.80	-0.53	50.11
6,296.0	0.40	83.90	6,176.5	27.0	-1,029.7	179.3	0.28	-0.16	30.00
6,328.0	1.60	183.50	6,208.5	26.5	-1,029.6	179.7	5.35	3.75	311.25
6,360.0	3.80	190.40	6,240.4	25.0	-1,029.8	181.2	6.94	6.88	21.56
6,391.0	5.50	189.10	6,271.3	22.6	-1,030.2	183.7	5.49	5.48	-4.19
6,423.0	7.30	188.10	6,303.1	19.0	-1,030.8	187.3	5.64	5.63	-3.13
6,455.0	9.80	189.00	6,334.8	14.3	-1,031.5	192.0	7.82	7.81	2.81
6,487.0	12.00	189.70	6,366.2	8.4	-1,032.5	198.1	6.89	6.88	2.19
6,518.0	14.20	189.80	6,396.4	1.4	-1,033.7	205.1	7.10	7.10	0.32
6,550.0	16.30	189.30	6,427.3	-6.9	-1,035.1	213.5	6.58	6.56	-1.56
6,582.0	18.20	188.10	6,457.8	-16.2	-1,036.5	223.0	6.04	5.94	-3.75
6,613.0	20.70	186.20	6,487.0	-26.5	-1,037.8	233.3	8.32	8.06	-6.13
6,645.0	22.90	184.60	6,516.8	-38.3	-1,038.9	245.1	7.12	6.88	-5.00
6,677.0	25.10	183.50	6,546.0	-51.3	-1,039.8	258.0	7.02	6.88	-3.44
6,709.0	27.40	183.50	6,574.7	-65.4	-1,040.6	272.0	7.19	7.19	0.00
6,740.0	29.50	182.10	6,601.9	-80.2	-1,041.4	286.6	7.11	6.77	-4.52
6,772.0	31.60	181.80	6,629.5	-96.4	-1,041.9	302.7	6.58	6.56	-0.94
6,804.0	34.10	182.50	6,656.4	-113.8	-1,042.6	319.8	7.90	7.81	2.19
6,836.0	36.80	182.30	6,682.4	-132.3	-1,043.3	338.1	8.45	8.44	-0.63
6,867.0	39.90	182.50	6,706.8	-151.5	-1,044.2	357.1	10.01	10.00	0.65
6,899.0	43.30	181.60	6,730.7	-172.8	-1,044.9	378.0	10.79	10.63	-2.81
6,931.0	46.50	181.80	6,753.3	-195.3	-1,045.6	400.3	10.01	10.00	0.63
6,962.0	49.20	181.80	6,774.1	-218.3	-1,046.3	422.9	8.71	8.71	0.00
6,994.0	52.40	180.90	6,794.4	-243.1	-1,046.9	447.4	10.23	10.00	-2.81
7,026.0	55.50	180.40	6,813.2	-269.0	-1,047.2	472.8	9.77	9.69	-1.56
7,058.0	58.80	179.70	6,830.6	-295.8	-1,047.2	499.1	10.47	10.31	-2.19
7,089.0	61.50	178.90	6,846.0	-322.7	-1,046.9	525.4	8.99	8.71	-2.58
7,121.0	63.50	177.70	6,860.8	-351.1	-1,046.0	553.0	7.08	6.25	-3.75
7,153.0	64.50	177.50	6,874.8	-379.8	-1,044.8	580.9	3.18	3.13	-0.63
7,185.0	65.50	178.40	6,888.3	-408.8	-1,043.8	609.1	4.03	3.13	2.81
7,216.0	67.40	178.20	6,900.7	-437.2	-1,042.9	636.8	6.16	6.13	-0.65
7,248.0	69.40	178.40	6,912.5	-467.0	-1,042.0	665.7	6.28	6.25	0.63
7,280.0	71.50	179.10	6,923.2	-497.1	-1,041.4	695.1	6.88	6.56	2.19
7,312.0	72.20	179.70	6,933.1	-527.5	-1,041.1	724.9	2.82	2.19	1.88
7,344.0	73.20	179.80	6,942.7	-558.1	-1,040.9	754.8	3.14	3.13	0.31
7,376.0	75.60	180.20	6,951.3	-588.9	-1,040.9	785.0	7.60	7.50	1.25
7,407.0	79.00	179.80	6,958.1	-619.1	-1,040.9	814.6	11.04	10.97	-1.29
7,439.0	80.20	178.80	6,963.9	-650.6	-1,040.6	845.4	4.85	3.75	-3.13
7,471.0	81.80	177.90	6,968.9	-682.2	-1,039.6	876.1	5.72	5.00	-2.81
7,482.0	82.30	177.90	6,970.4	-693.1	-1,039.2	886.7	4.55	4.55	0.00
7,522.0	84.19	177.90	6,975.1	-732.8	-1,037.8	925.3	4.71	4.71	0.00
7"									
7,552.0	85.60	177.90	6,977.8	-762.6	-1,036.7	954.4	4.71	4.71	0.00
7,644.0	90.60	178.40	6,980.8	-854.5	-1,033.7	1,043.8	5.46	5.43	0.54
7,740.0	91.00	177.70	6,979.5	-950.4	-1,030.5	1,137.1	0.84	0.42	-0.73
7,836.0	89.90	179.80	6,978.7	-1,046.4	-1,028.4	1,230.8	2.47	-1.15	2.19
7,931.0	88.80	177.90	6,979.8	-1,141.4	-1,026.5	1,323.4	2.31	-1.16	-2.00
8,027.0	92.00	178.90	6,979.1	-1,237.3	-1,023.8	1,416.9	3.49	3.33	1.04
8,123.0	92.70	180.40	6,975.2	-1,333.2	-1,023.2	1,510.8	1.72	0.73	1.56
8,219.0	91.70	181.10	6,971.5	-1,429.1	-1,024.4	1,605.0	1.27	-1.04	0.73
8,314.0	90.50	180.90	6,969.7	-1,524.1	-1,026.1	1,698.4	1.28	-1.26	-0.21
8,410.0	91.40	180.00	6,968.1	-1,620.1	-1,026.9	1,792.6	1.33	0.94	-0.94

<b>Company:</b>	PETROLEUM DEVELOPMENT CORP Weld County CO	<b>Local Co-ordinate Reference:</b>	Well Richter 34M-203
<b>Project:</b>	SEC.27-T7N-R64W	<b>TVD Reference:</b>	WELL @ 4893.0ft (RKB - 23')
<b>Site:</b>	Richter 27T-HZ Pad Sec.27-T7N-R64W	<b>MD Reference:</b>	WELL @ 4893.0ft (RKB - 23')
<b>Well:</b>	Richter 34M-203	<b>North Reference:</b>	True
<b>Wellbore:</b>	Wellbore #1	<b>Survey Calculation Method:</b>	Minimum Curvature
<b>Design:</b>	Wellbore #1	<b>Database:</b>	Landmark

Survey									
Measured Depth (ft)	Inclination (°)	Azimuth (°)	Vertical Depth (ft)	+N/-S (ft)	+E/-W (ft)	Vertical Section (ft)	Dogleg Rate (°/100ft)	Build Rate (°/100ft)	Turn Rate (°/100ft)
8,505.0	90.00	180.50	6,966.9	-1,715.1	-1,027.3	1,885.7	1.56	-1.47	0.53
8,600.0	90.40	180.90	6,966.6	-1,810.1	-1,028.4	1,979.0	0.60	0.42	0.42
8,695.0	89.30	181.20	6,966.8	-1,905.0	-1,030.2	2,072.5	1.20	-1.16	0.32
8,791.0	89.20	181.10	6,968.1	-2,001.0	-1,032.1	2,166.9	0.15	-0.10	-0.10
8,886.0	88.50	180.50	6,970.0	-2,096.0	-1,033.4	2,260.2	0.97	-0.74	-0.63
8,981.0	89.00	180.90	6,972.1	-2,191.0	-1,034.6	2,353.5	0.67	0.53	0.42
9,076.0	90.00	181.60	6,972.9	-2,285.9	-1,036.7	2,447.0	1.28	1.05	0.74
9,171.0	90.10	181.20	6,972.8	-2,380.9	-1,039.0	2,540.5	0.43	0.11	-0.42
9,267.0	90.90	180.50	6,972.0	-2,476.9	-1,040.4	2,634.8	1.11	0.83	-0.73
9,362.0	90.10	179.10	6,971.2	-2,571.9	-1,040.1	2,727.8	1.70	-0.84	-1.47
9,457.0	90.60	179.50	6,970.6	-2,666.9	-1,038.9	2,820.7	0.67	0.53	0.42
9,552.0	90.40	179.30	6,969.8	-2,761.9	-1,037.9	2,913.5	0.30	-0.21	-0.21
9,647.0	90.60	178.90	6,968.9	-2,856.8	-1,036.4	3,006.3	0.47	0.21	-0.42
9,743.0	89.50	178.20	6,968.8	-2,952.8	-1,034.0	3,099.9	1.36	-1.15	-0.73
9,838.0	89.80	178.80	6,969.4	-3,047.8	-1,031.5	3,192.4	0.71	0.32	0.63
9,933.0	89.80	178.40	6,969.8	-3,142.8	-1,029.2	3,285.0	0.42	0.00	-0.42
10,028.0	90.50	179.30	6,969.5	-3,237.7	-1,027.3	3,377.7	1.20	0.74	0.95
10,123.0	89.90	176.80	6,969.2	-3,332.7	-1,024.1	3,470.1	2.71	-0.63	-2.63
10,219.0	90.20	178.20	6,969.1	-3,428.6	-1,019.9	3,563.2	1.49	0.31	1.46
10,314.0	90.70	180.00	6,968.3	-3,523.6	-1,018.4	3,656.0	1.97	0.53	1.89
10,409.0	90.10	177.90	6,967.7	-3,618.5	-1,016.6	3,748.7	2.30	-0.63	-2.21
10,504.0	89.70	175.80	6,967.8	-3,713.4	-1,011.4	3,840.6	2.25	-0.42	-2.21
10,600.0	89.20	175.30	6,968.8	-3,809.1	-1,004.0	3,932.9	0.74	-0.52	-0.52
10,695.0	90.70	177.70	6,968.8	-3,903.9	-998.2	4,024.6	2.98	1.58	2.53
10,790.0	90.40	179.80	6,967.9	-3,998.9	-996.1	4,117.3	2.23	-0.32	2.21
10,885.0	90.50	182.50	6,967.2	-4,093.8	-998.0	4,210.7	2.84	0.11	2.84
10,980.0	90.70	183.70	6,966.2	-4,188.7	-1,003.1	4,304.7	1.28	0.21	1.26
11,076.0	92.90	184.40	6,963.2	-4,284.4	-1,009.9	4,399.8	2.40	2.29	0.73
11,171.0	93.40	184.00	6,958.0	-4,379.0	-1,016.9	4,493.9	0.67	0.53	-0.42
11,266.0	92.10	182.60	6,953.4	-4,473.7	-1,022.3	4,587.8	2.01	-1.37	-1.47
11,361.0	90.80	181.60	6,951.0	-4,568.6	-1,025.8	4,681.5	1.73	-1.37	-1.05
11,456.0	89.30	179.80	6,950.9	-4,663.6	-1,027.0	4,774.8	2.47	-1.58	-1.89
11,552.0	88.80	179.50	6,952.5	-4,759.6	-1,026.4	4,868.7	0.61	-0.52	-0.31
11,647.0	89.30	179.70	6,954.1	-4,854.6	-1,025.7	4,961.6	0.57	0.53	0.21
11,742.0	89.10	179.10	6,955.4	-4,949.6	-1,024.7	5,054.5	0.67	-0.21	-0.63
11,755.0	89.10	179.00	6,955.6	-4,962.6	-1,024.5	5,067.2	0.77	0.00	-0.77
11,812.0	89.10	179.00	6,956.5	-5,019.6	-1,023.5	5,122.8	0.00	0.00	0.00

BHL 500'FSL & 2435'FEL, SEC.34

Casing Points				
Measured Depth (ft)	Vertical Depth (ft)	Name	Casing Diameter (")	Hole Diameter (")
7,522.0	6,975.1	7"	7	7-1/2

Checked By: \_\_\_\_\_ Approved By: \_\_\_\_\_ Date: \_\_\_\_\_