

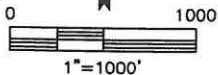
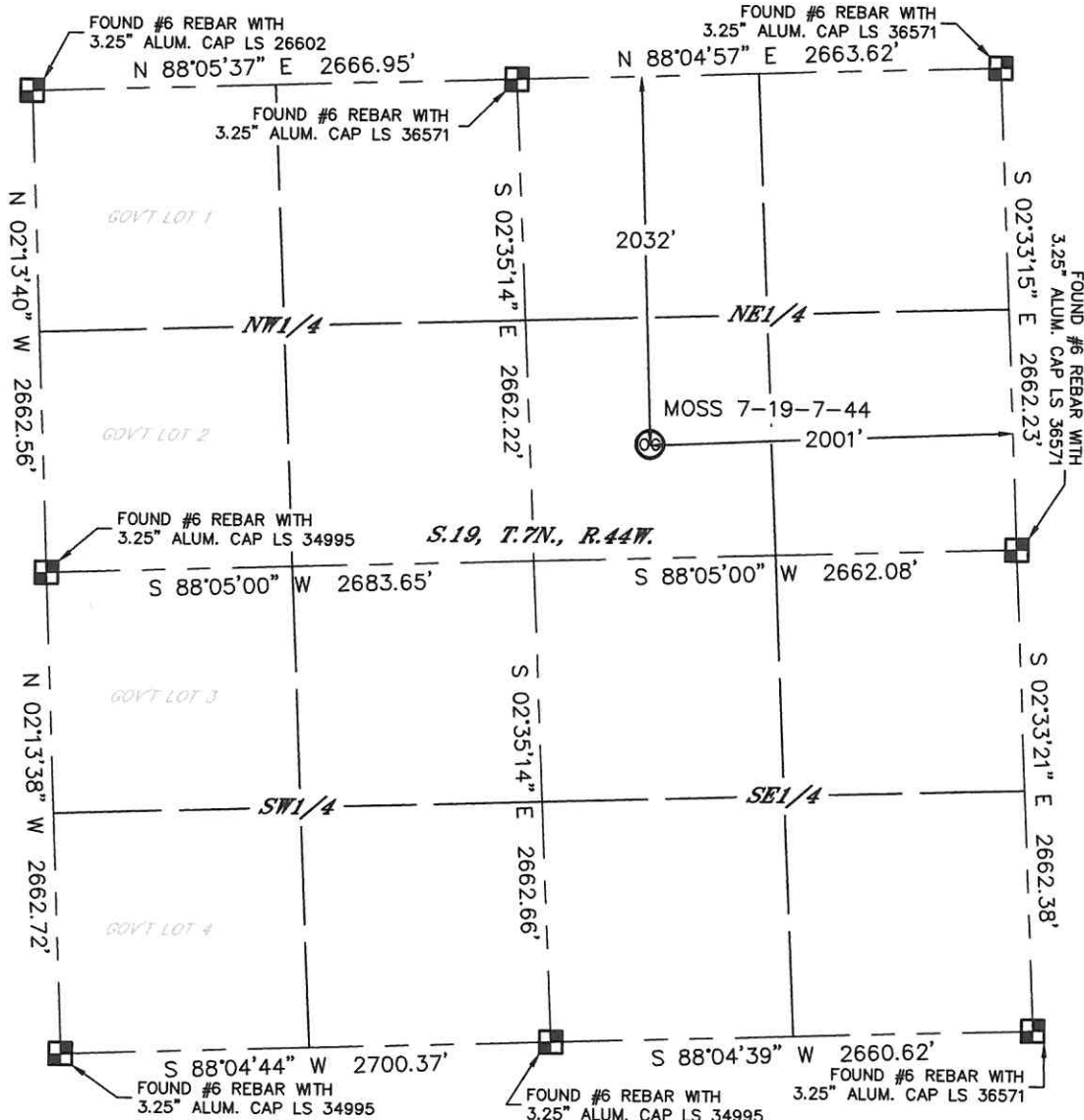


Lat40°, Inc. 1635 Foxtrail Drive, Suite 325 Loveland, CO 970-776-3321

WELL LOCATION CERTIFICATE

THIS MAP DOES NOT REPRESENT A BOUNDARY SURVEY

SECTION: 19
TOWNSHIP: 7N
RANGE: 44W



In accordance with a request from Michelle Lewis with Ominex Petroleum, Inc., Lat40°, Inc. has determined the surface location of the MOSS 7-19-7-44 to be 2032' from the NORTH line and 2001' from the EAST line as measured at right angles from the section lines of Section 19, Township 7 North, Range 44 West of the Sixth Principal Meridian, County of Phillips, State of Colorado.

I hereby state that this Well Location Certificate was prepared by me, or under my direct supervision, that the fieldwork was completed on 11/7/2014, for and on behalf of Ominex Petroleum, Inc. That this is not a Land Survey Plat or an Improvement Survey Plat, and that it is not to be relied upon for establishment of fence, building, or other future improvement lines.

SURFACE LOCATION

LAT: 40.56561°N
LONG: 102.30929°W
PDOP: 1.8
ELEV: 3743'
1/4,1/4: SWNE

NOTE:

- 1) Bearings shown are Grid Bearings of the Colorado State Plane Coordinate System, North Zone, North American Datum 1983/2007. The lineal dimensions as contained herein are based upon the "U.S. Survey Foot."
 - 2) Ground elevations are based on an observed GPS elevation (NAVD 1988 DATUM).
 - 3) IMPROVEMENTS: See LOCATION DRAWING for all visible improvements within 500' of disturbed area.
 - 4) SURFACE USE: CROP LAND
 - 5) INSTRUMENT OPERATOR: ADAM BEAUPREZ
- NEAREST CULTURAL ITEMS:
BUILDING: ±1655' NE
BUILDING UNIT: ±1802' NE
HIGH OCCUPANCY BUILDING UNIT: ±4795' NE
DESIGNATED OUTSIDE ACTIVITY AREA: +5280'
PUBLIC ROAD: 1987' E (HWY 385)
ABOVEGROUND UTILITY: ±1815' NE
RAILROAD: +5280'
PROPERTY LINE: 620' S

LEGEND

- = ALIQUOT MONUMENT AS DESCRIBED
○ = CALCULATED POSITION

Kyle E. Rutz-On Behalf of Lat40°, Inc.
Colorado Licensed Professional Land Surveyor No. 38307

DATE: rev11/7/2014
PROJECT#: 2013176

